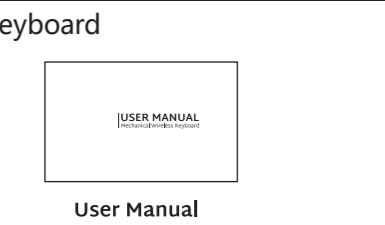
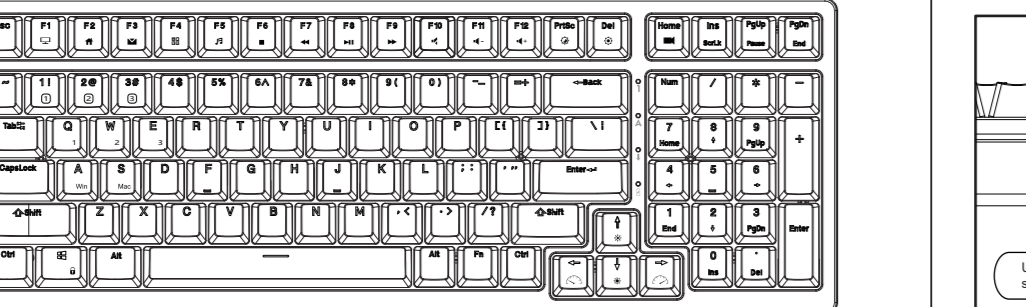
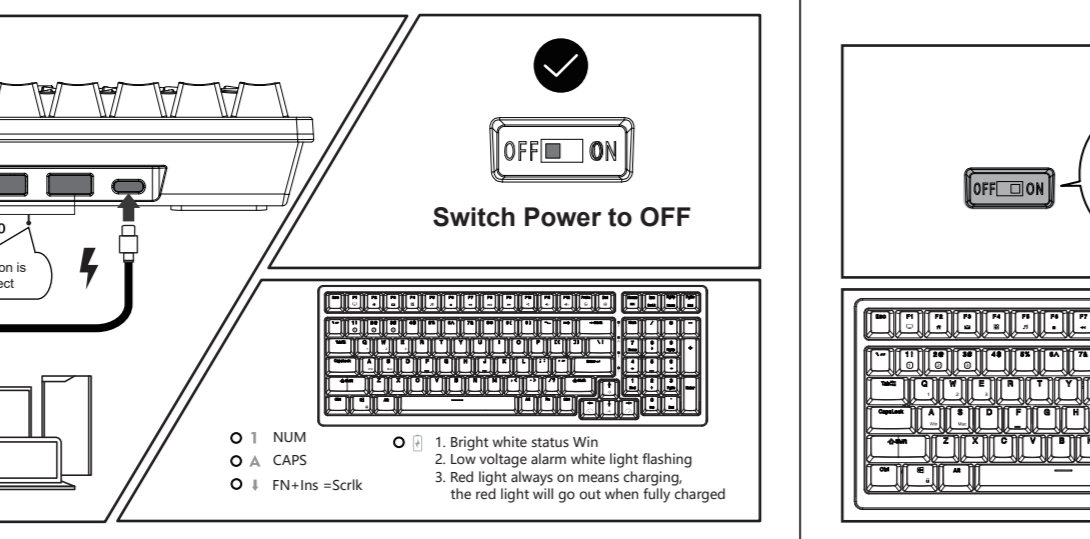


PRODUCT BASIC

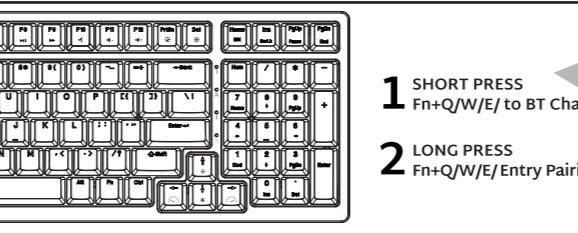
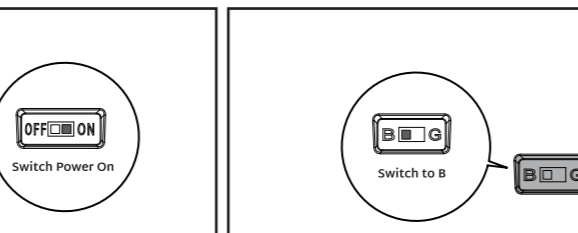


WIRED MODE & CHARGING



HOW TO USE

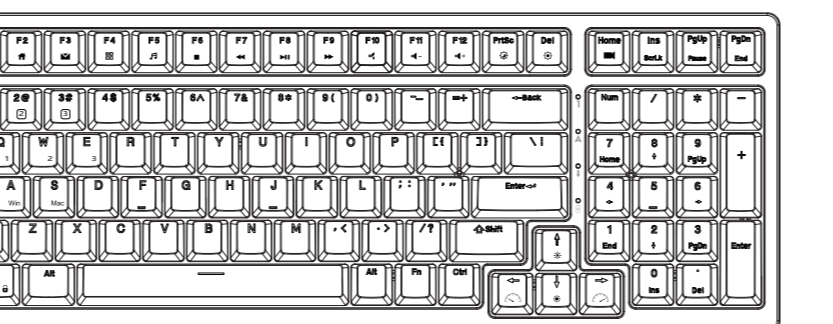
BT Connection



1 SHORT PRESS
Fn+Q/W/E/ to BT Channel

2 LONG PRESS
Fn+Q/W/E/Entry Pairing Mode

BACKLIGHT CONTROL

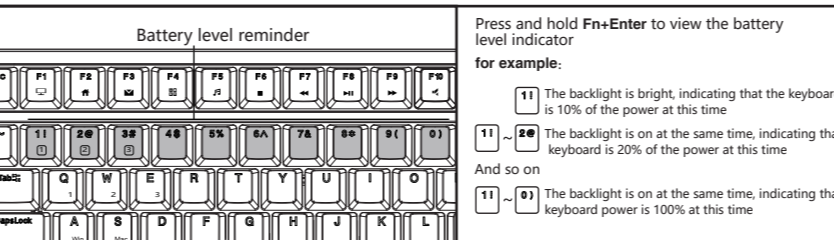


Fn + PrtSc Switch Backlight Mode
Fn + Q Backlight Brightness +
Fn + W Backlight Brightness -
Fn + Del (RGB version only) Backlight monochrome switching
Fn + F11 Backlight Speed +
Fn + F12 Backlight Speed -

SPECIAL FUNCTION KEYS

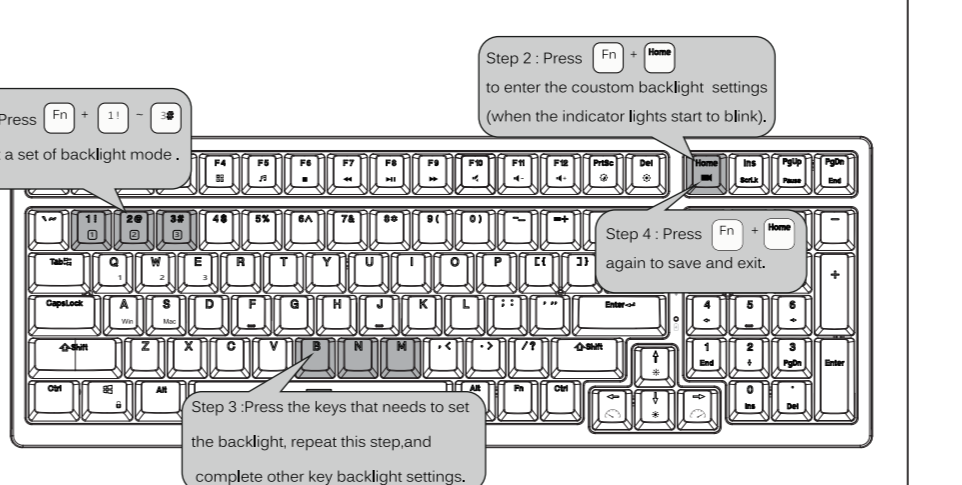
Fn + Ins ScrLk
Fn + PgUp Pause
Fn + PgDn End
Fn + S switch to mac system
Fn + Win Restore to factory settings
Fn + Lock Windows Lock
Fn + Home Backlit recording mode
Fn + A switch to windows system

BATTERY REMINDER



Battery level reminder
Press and hold Fn+Enter to view the battery level indicator
for example:
[F11] The backlight is bright, indicating that the keyboard is 10% of the power at this time
[F12] The backlight is on at the same time, indicating that the keyboard is 20% of the power at this time
And so on
[F11] The backlight is on at the same time, indicating that the keyboard power is 100% at this time

COUSTOM BACKLIGHT SET



MULTIMEDIA KEY FOR WINDOWS

In Windows mode(FN + A: switch to Windows system)

Fn + F1 Computer
Fn + F2 Browser
Fn + F3 Mailbox
Fn + F4 Calculator
Fn + F5 Player
Fn + F6 Stop
Fn + F7 Last song
Fn + F8 Play / pause
Fn + F9 Next song
Fn + F10 Mute
Fn + F11 Volume-
Fn + F12 Volume+

MULTIMEDIA KEY FOR MAC

MAC system(FN + s: switch to MAC system)

Fn + F7 Last song
Fn + F8 Play / pause
Fn + F9 Next song
Fn + F10 Mute
Fn + F11 Volume-
Fn + F12 Volume+

SYSTEM REQUIREMENTS

BT Mode

- Device With Bluetooth 5.1 or later
- PC: Windows 7 or Later
- Mac: macOS X 10.6 Snow Leopard or Later
- iOS: All iPads/iPhone 5 or Later
- Android: 5.0 Lollipop or Later

Have an issue with one of our RK products?

Feel free to contact us with any product issues or questions.
We will reply as quickly as possible to ensure all your needs are handled.
Please contact the seller

