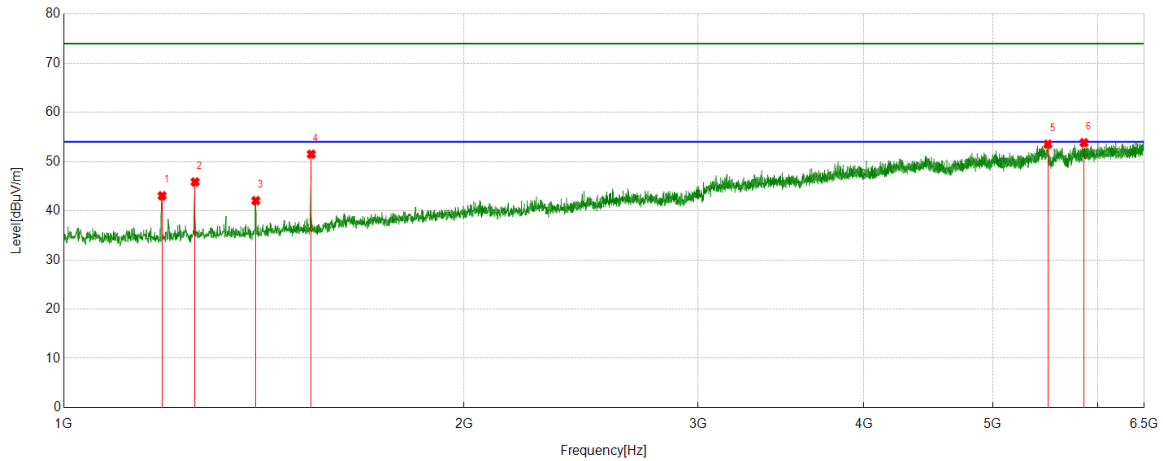


Test Mode	Channel	Polarization	Verdict
11ac VHT40	5670	Vertical	PASS

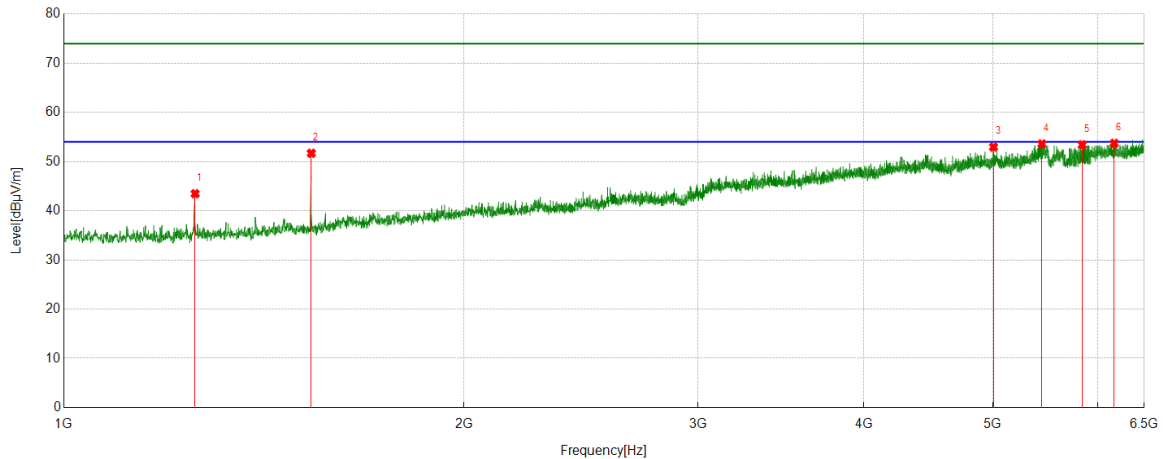


#### PK Result:

No.	Frequency [MHz]	Reading Level [dBuV]	Correct Factor [dB/m]	Result [dBuV/m]	Limit [dBuV/m]	Margin [dB]	Remark
1	1185.7984	44.97	-1.93	43.04	74.00	-30.96	Vertical
2	1255.4728	47.33	-1.48	45.85	74.00	-28.15	Vertical
3	1394.8216	43.19	-1.14	42.05	74.00	-31.95	Vertical
4	1535.3928	52.22	-0.72	51.50	74.00	-22.50	Vertical
5	5500.1111	35.71	17.82	53.53	74.00	-20.47	Vertical
6	5855.8173	35.76	18.08	53.84	74.00	-20.16	Vertical

- Remark: 1. Measurement = Reading Level + Correct Factor.  
2. If Peak Result complies with AV limit, AV Result is deemed to comply with AV limit.  
3. Test setup: RBW: 1 MHz, VBW: 3 MHz, Sweep time: auto.  
4. Peak: Peak detector.  
5. AVG: VBW refer to section 6.2.  
6. For below 6.5GHz part, filter losses were only considered in the spurious frequency bands and the authorized band were not corrected for Band Reject Filter losses.  
The proper operation of the transmitter prior to adding the filter to the measurement chain.  
7. Only the worst case emission was recorded, if it complies with the limit, the other emissions deemed to comply with the limit.

Test Mode	Channel	Polarization	Verdict
11ac VHT40	5710	Horizontal	PASS

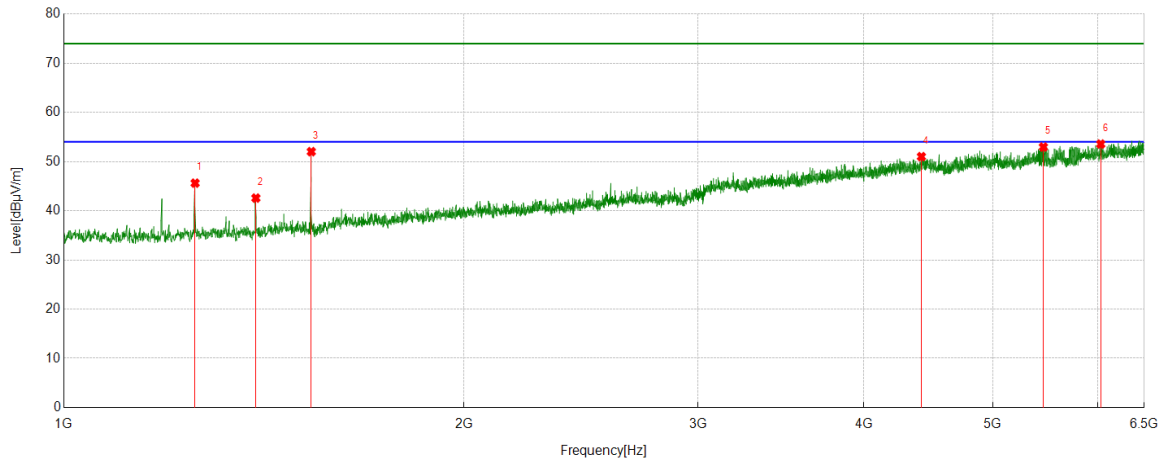


#### PK Result:

No.	Frequency [MHz]	Reading Level [dBuV]	Correct Factor [dB/m]	Result [dBuV/m]	Limit [dBuV/m]	Margin [dB]	Remark
1	1255.4728	44.95	-1.48	43.47	74.00	-30.53	Horizontal
2	1535.3928	52.42	-0.72	51.70	74.00	-22.30	Horizontal
3	5006.2785	37.40	15.56	52.96	74.00	-21.04	Horizontal
4	5444.4938	35.69	17.89	53.58	74.00	-20.42	Horizontal
5	5838.0931	35.83	17.58	53.41	74.00	-20.59	Horizontal
6	6171.1857	35.37	18.34	53.71	74.00	-20.29	Horizontal

- Remark: 1. Measurement = Reading Level + Correct Factor.  
2. If Peak Result complies with AV limit, AV Result is deemed to comply with AV limit.  
3. Test setup: RBW: 1 MHz, VBW: 3 MHz, Sweep time: auto.  
4. Peak: Peak detector.  
5. AVG: VBW refer to section 6.2.  
6. For below 6.5GHz part, filter losses were only considered in the spurious frequency bands and the authorized band were not corrected for Band Reject Filter losses.  
The proper operation of the transmitter prior to adding the filter to the measurement chain.  
7. Only the worst case emission was recorded, if it complies with the limit, the other emissions deemed to comply with the limit.

Test Mode	Channel	Polarization	Verdict
11ac VHT40	5710	Vertical	PASS

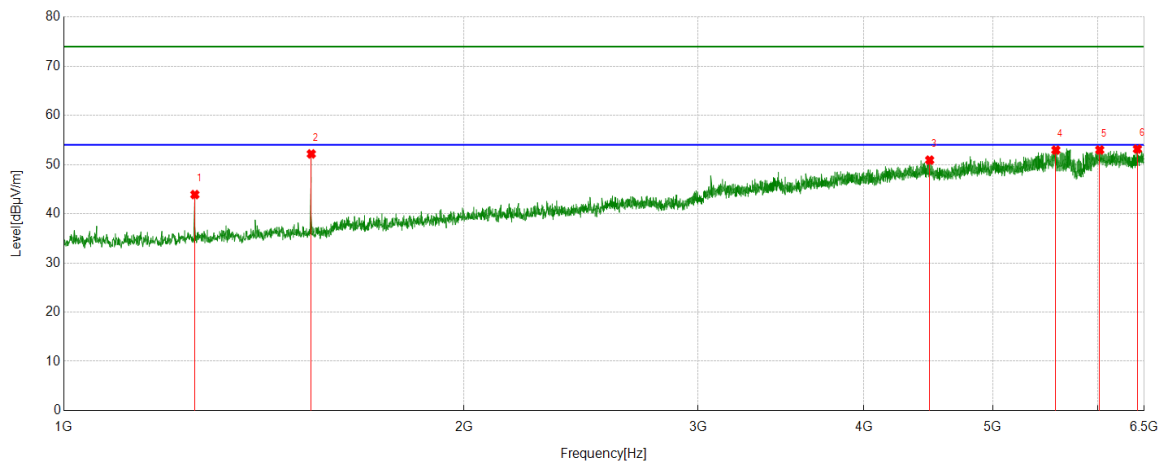


#### PK Result:

No.	Frequency [MHz]	Reading Level [dBuV]	Correct Factor [dB/m]	Result [dBuV/m]	Limit [dBuV/m]	Margin [dB]	Remark
1	1255.4728	47.10	-1.48	45.62	74.00	-28.38	Vertical
2	1394.8216	43.72	-1.14	42.58	74.00	-31.42	Vertical
3	1535.3928	52.74	-0.72	52.02	74.00	-21.98	Vertical
4	4418.3243	36.75	14.26	51.01	74.00	-22.99	Vertical
5	5457.9398	35.09	17.87	52.96	74.00	-21.04	Vertical
6	6028.1698	35.79	17.77	53.56	74.00	-20.44	Vertical

- Remark: 1. Measurement = Reading Level + Correct Factor.  
2. If Peak Result complies with AV limit, AV Result is deemed to comply with AV limit.  
3. Test setup: RBW: 1 MHz, VBW: 3 MHz, Sweep time: auto.  
4. Peak: Peak detector.  
5. AVG: VBW refer to section 6.2.  
6. For below 6.5GHz part, filter losses were only considered in the spurious frequency bands and the authorized band were not corrected for Band Reject Filter losses.  
The proper operation of the transmitter prior to adding the filter to the measurement chain.  
7. Only the worst case emission was recorded, if it complies with the limit, the other emissions deemed to comply with the limit.

Test Mode	Channel	Polarization	Verdict
11ac VHT40	5755	Horizontal	PASS

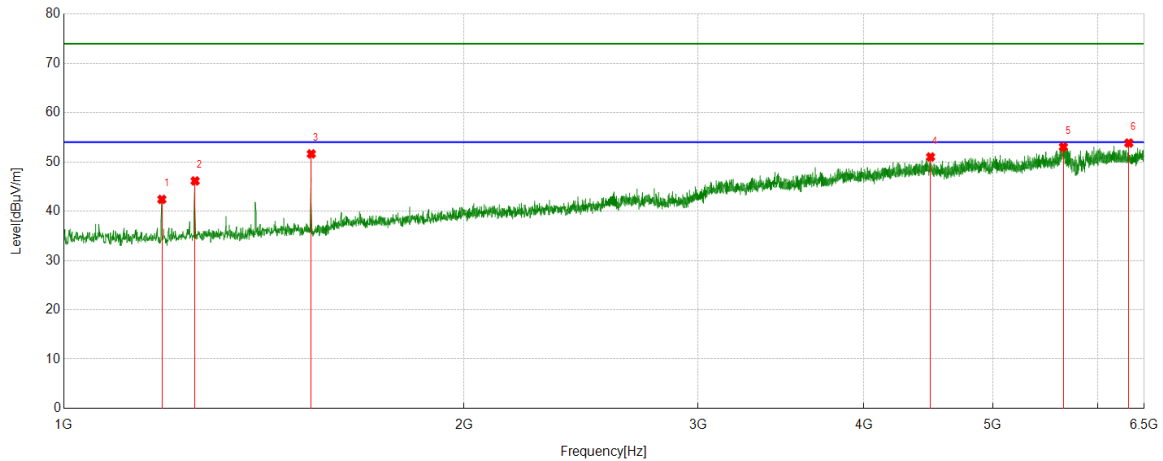


#### PK Result:

No.	Frequency [MHz]	Reading Level [dBuV]	Correct Factor [dB/m]	Result [dBuV/m]	Limit [dBuV/m]	Margin [dB]	Remark
1	1254.8617	45.50	-1.60	43.90	74.00	-30.10	Horizontal
2	1535.3928	52.55	-0.38	52.17	74.00	-21.83	Horizontal
3	4481.8869	36.82	14.09	50.91	74.00	-23.09	Horizontal
4	5577.1197	36.41	16.54	52.95	74.00	-21.05	Horizontal
5	6017.7798	35.70	17.28	52.98	74.00	-21.02	Horizontal
6	6423.6026	34.56	18.60	53.16	74.00	-20.84	Horizontal

- Remark: 1. Measurement = Reading Level + Correct Factor.  
2. If Peak Result complies with AV limit, AV Result is deemed to comply with AV limit.  
3. Test setup: RBW: 1 MHz, VBW: 3 MHz, Sweep time: auto.  
4. Peak: Peak detector.  
5. AVG: VBW refer to section 6.2.  
6. For below 6.5GHz part, filter losses were only considered in the spurious frequency bands and the authorized band were not corrected for Band Reject Filter losses.  
The proper operation of the transmitter prior to adding the filter to the measurement chain.  
7. Only the worst case emission was recorded, if it complies with the limit, the other emissions deemed to comply with the limit.

Test Mode	Channel	Polarization	Verdict
11ac VHT40	5755	Vertical	PASS

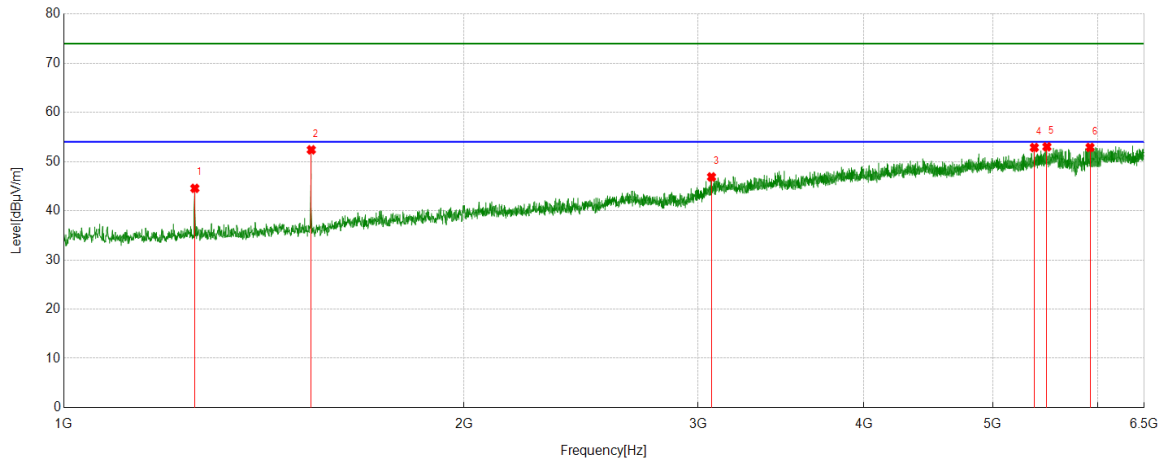


#### PK Result:

No.	Frequency [MHz]	Reading Level [dBuV]	Correct Factor [dB/m]	Result [dBuV/m]	Limit [dBuV/m]	Margin [dB]	Remark
1	1185.1872	44.31	-1.91	42.40	74.00	-31.60	Vertical
2	1255.4728	47.73	-1.59	46.14	74.00	-27.86	Vertical
3	1535.3928	52.01	-0.38	51.63	74.00	-22.37	Vertical
4	4489.2210	36.82	14.19	51.01	74.00	-22.99	Vertical
5	5650.4612	36.14	16.90	53.04	74.00	-20.96	Vertical
6	6328.8699	35.33	18.51	53.84	74.00	-20.16	Vertical

- Remark: 1. Measurement = Reading Level + Correct Factor.  
2. If Peak Result complies with AV limit, AV Result is deemed to comply with AV limit.  
3. Test setup: RBW: 1 MHz, VBW: 3 MHz, Sweep time: auto.  
4. Peak: Peak detector.  
5. AVG: VBW refer to section 6.2.  
6. For below 6.5GHz part, filter losses were only considered in the spurious frequency bands and the authorized band were not corrected for Band Reject Filter losses.  
The proper operation of the transmitter prior to adding the filter to the measurement chain.  
7. Only the worst case emission was recorded, if it complies with the limit, the other emissions deemed to comply with the limit.

Test Mode	Channel	Polarization	Verdict
11ac VHT40	5795	Horizontal	PASS

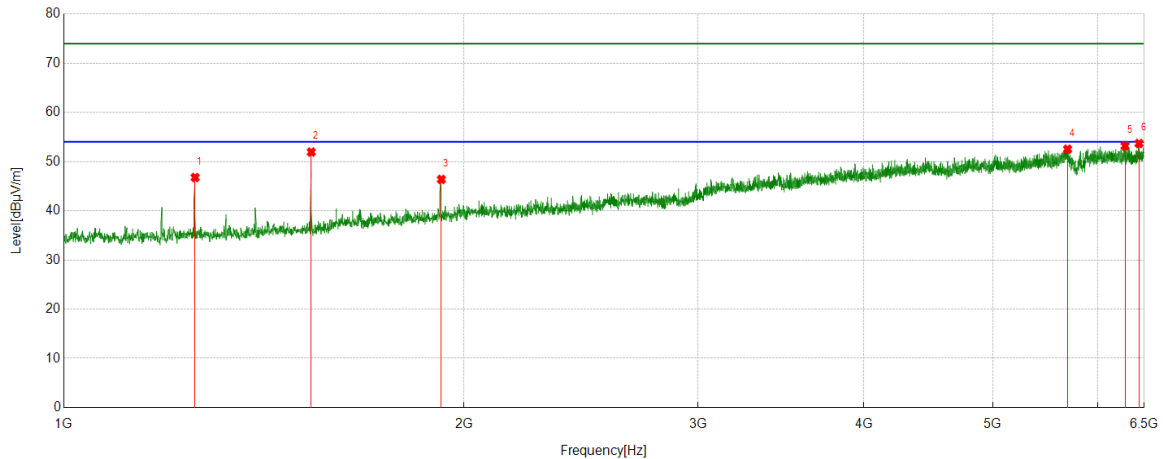


#### PK Result:

No.	Frequency [MHz]	Reading Level [dBuV]	Correct Factor [dB/m]	Result [dBuV/m]	Limit [dBuV/m]	Margin [dB]	Remark
1	1254.8617	46.16	-1.60	44.56	74.00	-29.44	Horizontal
2	1535.3928	52.77	-0.38	52.39	74.00	-21.61	Horizontal
3	3071.2857	38.08	8.80	46.88	74.00	-27.12	Horizontal
4	5372.9859	37.03	15.83	52.86	74.00	-21.14	Horizontal
5	5491.5546	36.87	16.14	53.01	74.00	-20.99	Horizontal
6	5917.5464	35.65	17.23	52.88	74.00	-21.12	Horizontal

- Remark: 1. Measurement = Reading Level + Correct Factor.  
2. If Peak Result complies with AV limit, AV Result is deemed to comply with AV limit.  
3. Test setup: RBW: 1 MHz, VBW: 3 MHz, Sweep time: auto.  
4. Peak: Peak detector.  
5. AVG: VBW refer to section 6.2.  
6. For below 6.5GHz part, filter losses were only considered in the spurious frequency bands and the authorized band were not corrected for Band Reject Filter losses.  
The proper operation of the transmitter prior to adding the filter to the measurement chain.  
7. Only the worst case emission was recorded, if it complies with the limit, the other emissions deemed to comply with the limit.

Test Mode	Channel	Polarization	Verdict
11ac VHT40	5795	Vertical	PASS

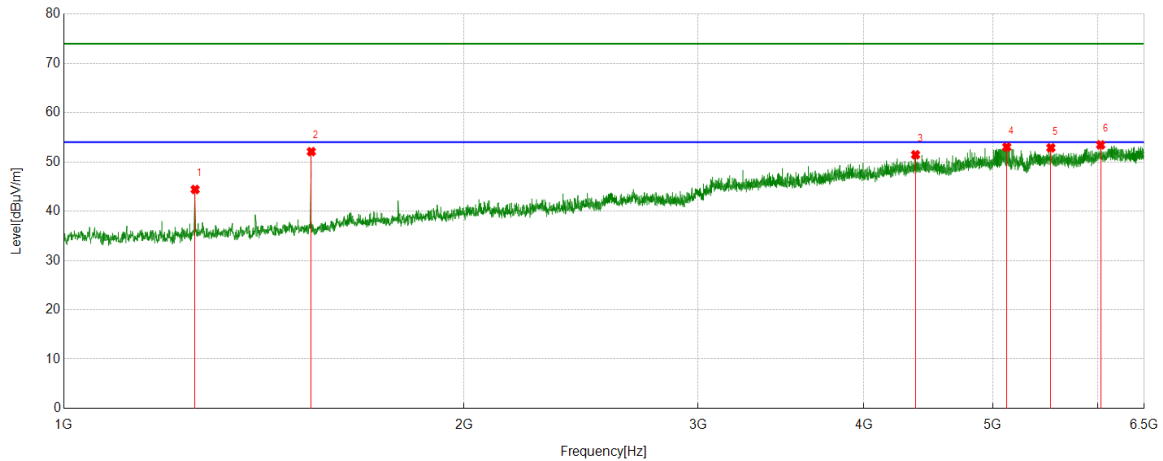


#### PK Result:

No.	Frequency [MHz]	Reading Level [dBuV]	Correct Factor [dB/m]	Result [dBuV/m]	Limit [dBuV/m]	Margin [dB]	Remark
1	1255.4728	48.36	-1.59	46.77	74.00	-27.23	Vertical
2	1535.3928	52.32	-0.38	51.94	74.00	-22.06	Vertical
3	1923.4915	43.85	2.53	46.38	74.00	-27.62	Vertical
4	5691.4102	35.93	16.59	52.52	74.00	-21.48	Vertical
5	6287.3097	34.60	18.58	53.18	74.00	-20.82	Vertical
6	6441.9380	34.42	19.26	53.68	74.00	-20.32	Vertical

- Remark: 1. Measurement = Reading Level + Correct Factor.  
2. If Peak Result complies with AV limit, AV Result is deemed to comply with AV limit.  
3. Test setup: RBW: 1 MHz, VBW: 3 MHz, Sweep time: auto.  
4. Peak: Peak detector.  
5. AVG: VBW refer to section 6.2.  
6. For below 6.5GHz part, filter losses were only considered in the spurious frequency bands and the authorized band were not corrected for Band Reject Filter losses.  
The proper operation of the transmitter prior to adding the filter to the measurement chain.  
7. Only the worst case emission was recorded, if it complies with the limit, the other emissions deemed to comply with the limit.

Test Mode	Channel	Polarization	Verdict
11ax HE20	5180	Horizontal	PASS



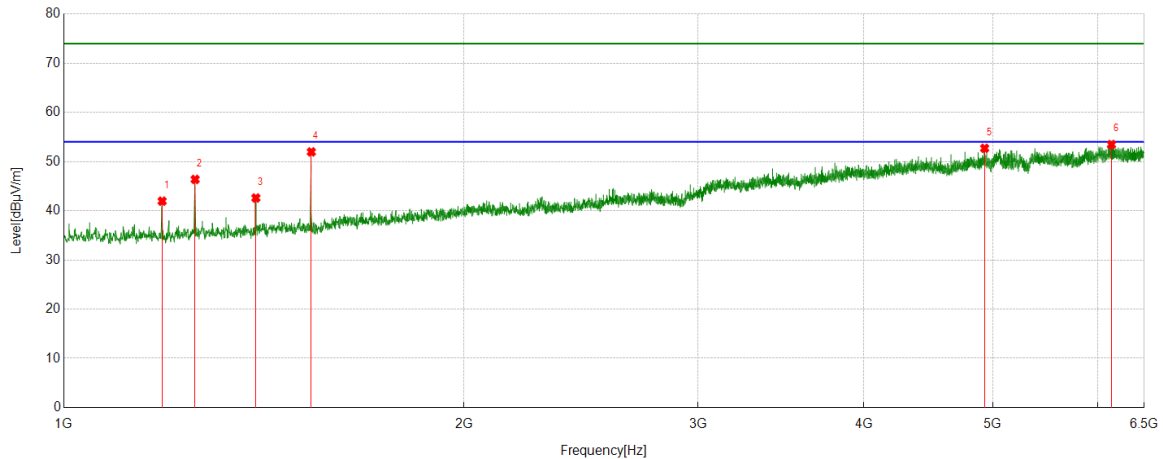
#### PK Result:

No.	Frequency [MHz]	Reading Level [dBuV]	Correct Factor [dB/m]	Result [dBuV/m]	Limit [dBuV/m]	Margin [dB]	Remark
1	1255.4728	45.57	-1.16	44.41	74.00	-29.59	Horizontal
2	1535.3928	52.67	-0.58	52.09	74.00	-21.91	Horizontal
3	4373.7082	37.51	13.95	51.46	74.00	-22.54	Horizontal
4	5122.4025	36.50	16.52	53.02	74.00	-20.98	Horizontal
5	5529.4477	35.47	17.39	52.86	74.00	-21.14	Horizontal
6	6027.5586	35.77	17.69	53.46	74.00	-20.54	Horizontal

- Remark: 1. Measurement = Reading Level + Correct Factor.  
2. If Peak Result complies with AV limit, AV Result is deemed to comply with AV limit.  
3. Test setup: RBW: 1 MHz, VBW: 3 MHz, Sweep time: auto.  
4. Peak: Peak detector.  
5. AVG: VBW refer to section 6.2.  
6. For below 6.5GHz part, filter losses were only considered in the spurious frequency bands and the authorized band were not corrected for Band Reject Filter losses.  
The proper operation of the transmitter prior to adding the filter to the measurement chain.  
7. Only the worst case emission was recorded, if it complies with the limit, the other emissions deemed to comply with the limit.



Test Mode	Channel	Polarization	Verdict
11ax HE20	5180	Vertical	PASS

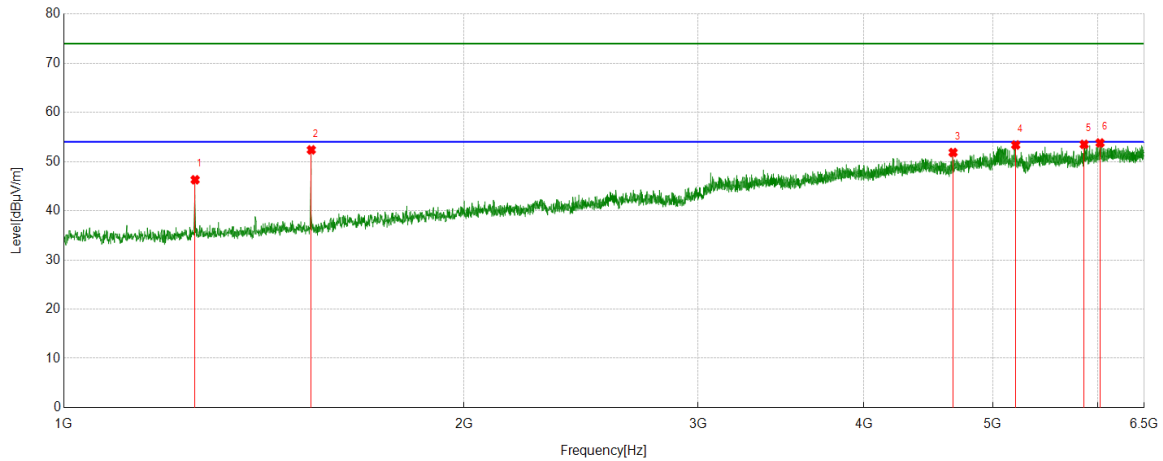


#### PK Result:

No.	Frequency [MHz]	Reading Level [dBuV]	Correct Factor [dB/m]	Result [dBuV/m]	Limit [dBuV/m]	Margin [dB]	Remark
1	1185.7984	44.04	-2.08	41.96	74.00	-32.04	Vertical
2	1255.4728	47.54	-1.16	46.38	74.00	-27.62	Vertical
3	1394.8216	43.58	-0.98	42.60	74.00	-31.40	Vertical
4	1535.3928	52.55	-0.58	51.97	74.00	-22.03	Vertical
5	4929.8811	36.85	15.86	52.71	74.00	-21.29	Vertical
6	6141.2379	35.14	18.33	53.47	74.00	-20.53	Vertical

- Remark: 1. Measurement = Reading Level + Correct Factor.  
2. If Peak Result complies with AV limit, AV Result is deemed to comply with AV limit.  
3. Test setup: RBW: 1 MHz, VBW: 3 MHz, Sweep time: auto.  
4. Peak: Peak detector.  
5. AVG: VBW refer to section 6.2.  
6. For below 6.5GHz part, filter losses were only considered in the spurious frequency bands and the authorized band were not corrected for Band Reject Filter losses.  
The proper operation of the transmitter prior to adding the filter to the measurement chain.  
7. Only the worst case emission was recorded, if it complies with the limit, the other emissions deemed to comply with the limit.

Test Mode	Channel	Polarization	Verdict
11ax HE20	5200	Horizontal	PASS

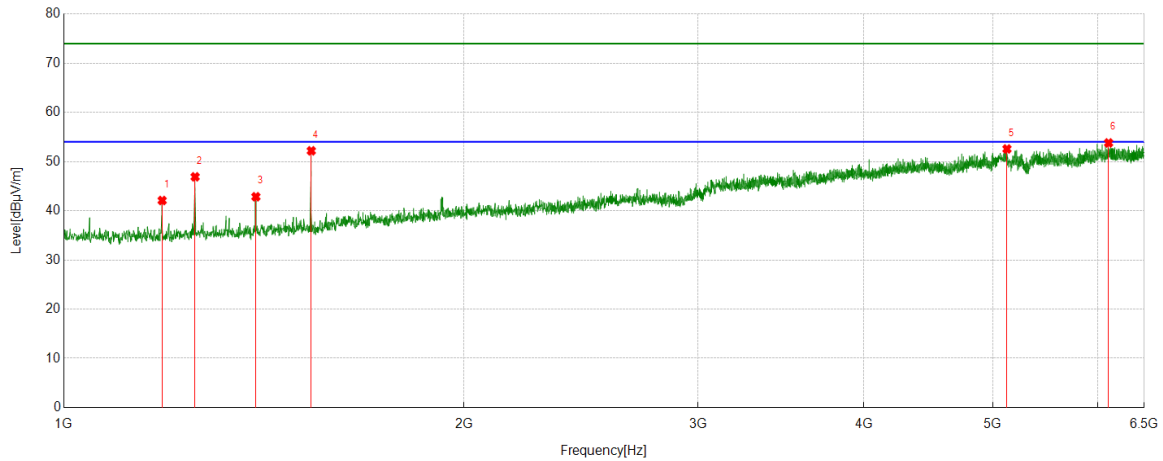


#### PK Result:

No.	Frequency [MHz]	Reading Level [dBuV]	Correct Factor [dB/m]	Result [dBuV/m]	Limit [dBuV/m]	Margin [dB]	Remark
1	1255.4728	47.46	-1.16	46.30	74.00	-27.70	Horizontal
2	1535.3928	52.96	-0.58	52.38	74.00	-21.62	Horizontal
3	4667.6853	37.76	14.09	51.85	74.00	-22.15	Horizontal
4	5202.4669	37.09	16.28	53.37	74.00	-20.63	Horizontal
5	5857.0397	36.43	17.07	53.50	74.00	-20.50	Horizontal
6	6020.8356	36.24	17.55	53.79	74.00	-20.21	Horizontal

- Remark: 1. Measurement = Reading Level + Correct Factor.  
2. If Peak Result complies with AV limit, AV Result is deemed to comply with AV limit.  
3. Test setup: RBW: 1 MHz, VBW: 3 MHz, Sweep time: auto.  
4. Peak: Peak detector.  
5. AVG: VBW refer to section 6.2.  
6. For below 6.5GHz part, filter losses were only considered in the spurious frequency bands and the authorized band were not corrected for Band Reject Filter losses.  
The proper operation of the transmitter prior to adding the filter to the measurement chain.  
7. Only the worst case emission was recorded, if it complies with the limit, the other emissions deemed to comply with the limit.

Test Mode	Channel	Polarization	Verdict
11ax HE20	5200	Vertical	PASS

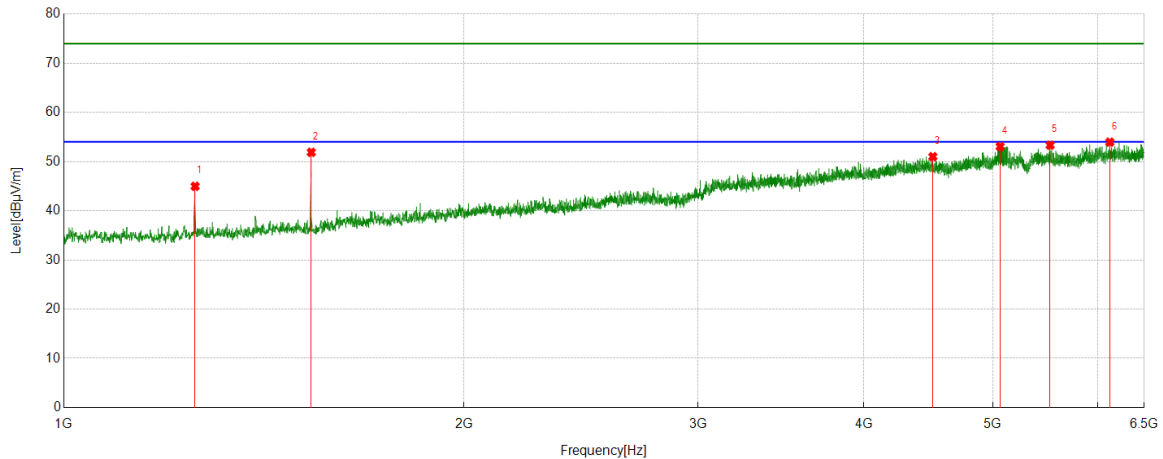


#### PK Result:

No.	Frequency [MHz]	Reading Level [dBuV]	Correct Factor [dB/m]	Result [dBuV/m]	Limit [dBuV/m]	Margin [dB]	Remark
1	1185.7984	44.17	-2.08	42.09	74.00	-31.91	Vertical
2	1255.4728	48.06	-1.16	46.90	74.00	-27.10	Vertical
3	1394.8216	43.83	-0.98	42.85	74.00	-31.15	Vertical
4	1535.3928	52.77	-0.58	52.19	74.00	-21.81	Vertical
5	5124.2360	36.07	16.50	52.57	74.00	-21.43	Vertical
6	6110.6790	35.34	18.46	53.80	74.00	-20.20	Vertical

- Remark: 1. Measurement = Reading Level + Correct Factor.  
2. If Peak Result complies with AV limit, AV Result is deemed to comply with AV limit.  
3. Test setup: RBW: 1 MHz, VBW: 3 MHz, Sweep time: auto.  
4. Peak: Peak detector.  
5. AVG: VBW refer to section 6.2.  
6. For below 6.5GHz part, filter losses were only considered in the spurious frequency bands and the authorized band were not corrected for Band Reject Filter losses.  
The proper operation of the transmitter prior to adding the filter to the measurement chain.  
7. Only the worst case emission was recorded, if it complies with the limit, the other emissions deemed to comply with the limit.

Test Mode	Channel	Polarization	Verdict
11ax HE20	5240	Horizontal	PASS

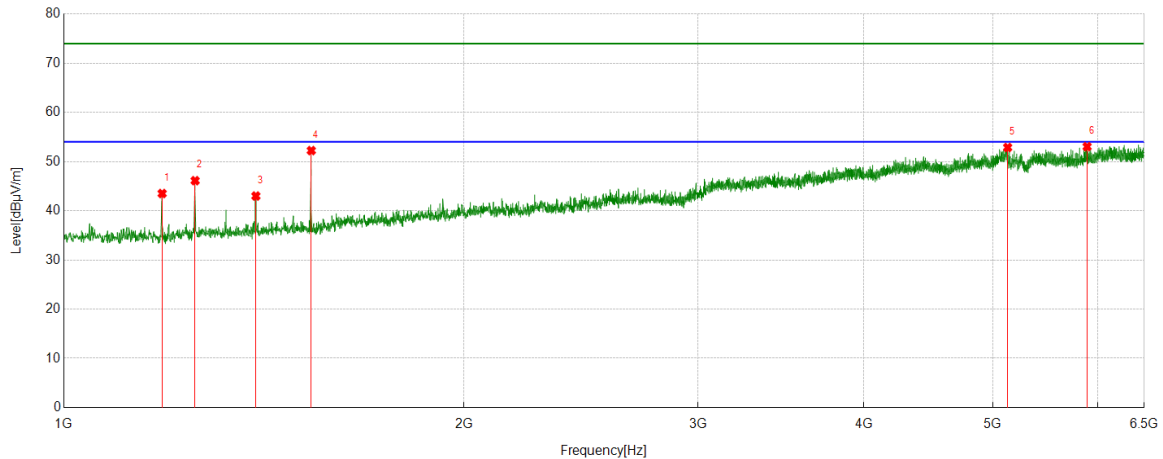


#### PK Result:

No.	Frequency [MHz]	Reading Level [dBuV]	Correct Factor [dB/m]	Result [dBuV/m]	Limit [dBuV/m]	Margin [dB]	Remark
1	1255.4728	46.13	-1.16	44.97	74.00	-29.03	Horizontal
2	1535.3928	52.46	-0.58	51.88	74.00	-22.12	Horizontal
3	4506.9452	37.05	13.95	51.00	74.00	-23.00	Horizontal
4	5064.3405	36.71	16.35	53.06	74.00	-20.94	Horizontal
5	5522.1136	36.33	17.00	53.33	74.00	-20.67	Horizontal
6	6123.5137	35.56	18.39	53.95	74.00	-20.05	Horizontal

- Remark: 1. Measurement = Reading Level + Correct Factor.  
2. If Peak Result complies with AV limit, AV Result is deemed to comply with AV limit.  
3. Test setup: RBW: 1 MHz, VBW: 3 MHz, Sweep time: auto.  
4. Peak: Peak detector.  
5. AVG: VBW refer to section 6.2.  
6. For below 6.5GHz part, filter losses were only considered in the spurious frequency bands and the authorized band were not corrected for Band Reject Filter losses.  
The proper operation of the transmitter prior to adding the filter to the measurement chain.  
7. Only the worst case emission was recorded, if it complies with the limit, the other emissions deemed to comply with the limit.

Test Mode	Channel	Polarization	Verdict
11ax HE20	5240	Vertical	PASS

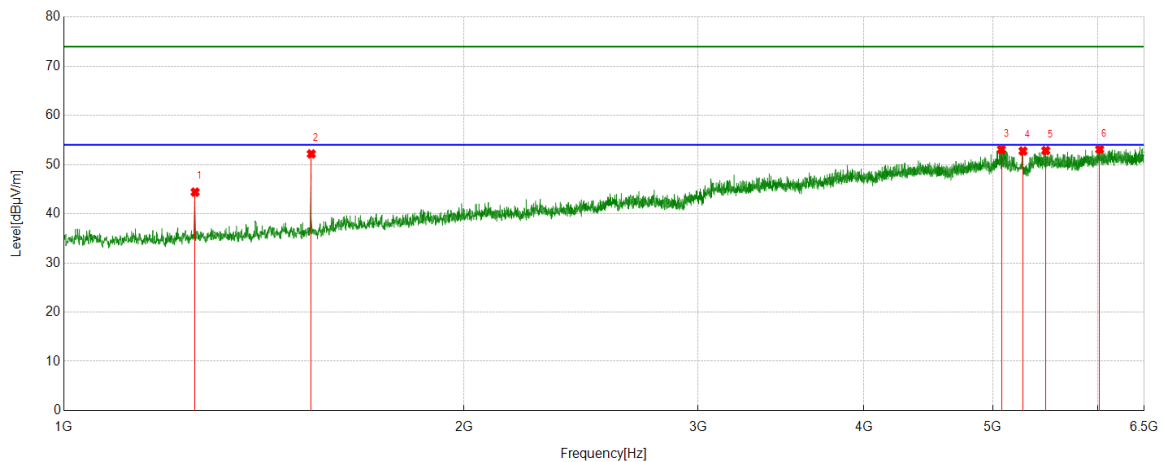


#### PK Result:

No.	Frequency [MHz]	Reading Level [dBuV]	Correct Factor [dB/m]	Result [dBuV/m]	Limit [dBuV/m]	Margin [dB]	Remark
1	1185.7984	45.59	-2.08	43.51	74.00	-30.49	Vertical
2	1255.4728	47.28	-1.16	46.12	74.00	-27.88	Vertical
3	1394.8216	43.98	-0.98	43.00	74.00	-31.00	Vertical
4	1535.3928	52.82	-0.58	52.24	74.00	-21.76	Vertical
5	5130.3478	36.39	16.48	52.87	74.00	-21.13	Vertical
6	5887.5986	35.15	17.89	53.04	74.00	-20.96	Vertical

- Remark: 1. Measurement = Reading Level + Correct Factor.  
2. If Peak Result complies with AV limit, AV Result is deemed to comply with AV limit.  
3. Test setup: RBW: 1 MHz, VBW: 3 MHz, Sweep time: auto.  
4. Peak: Peak detector.  
5. AVG: VBW refer to section 6.2.  
6. For below 6.5GHz part, filter losses were only considered in the spurious frequency bands and the authorized band were not corrected for Band Reject Filter losses.  
The proper operation of the transmitter prior to adding the filter to the measurement chain.  
7. Only the worst case emission was recorded, if it complies with the limit, the other emissions deemed to comply with the limit.

Test Mode	Channel	Polarization	Verdict
11ax HE20	5260	Horizontal	PASS

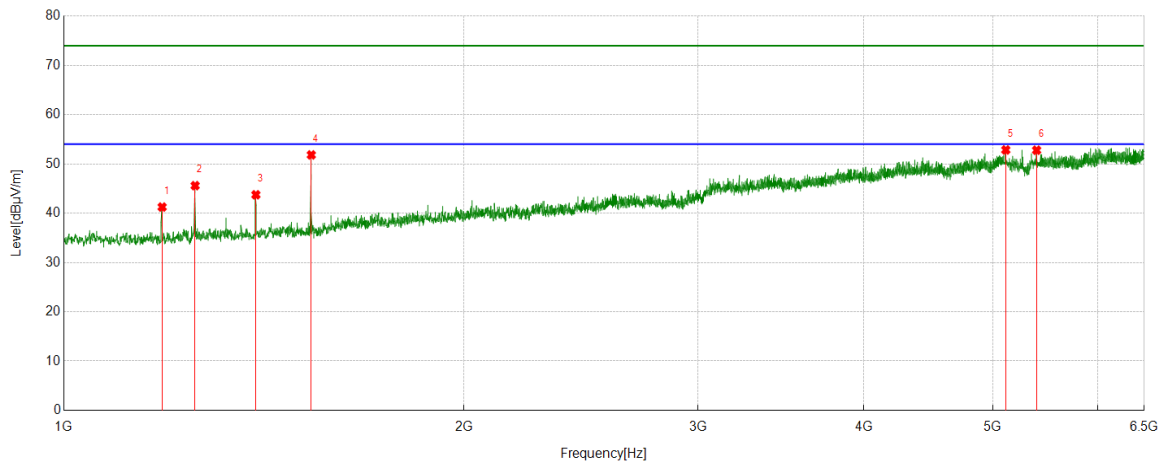


#### PK Result:

No.	Frequency [MHz]	Reading Level [dBuV]	Correct Factor [dB/m]	Result [dBuV/m]	Limit [dBuV/m]	Margin [dB]	Remark
1	1255.4728	45.56	-1.16	44.40	74.00	-29.60	Horizontal
2	1535.3928	52.75	-0.58	52.17	74.00	-21.83	Horizontal
3	5075.3417	36.70	16.38	53.08	74.00	-20.92	Horizontal
4	5268.4743	36.38	16.38	52.76	74.00	-21.24	Horizontal
5	5480.5534	36.39	16.45	52.84	74.00	-21.16	Horizontal
6	6017.1686	35.50	17.58	53.08	74.00	-20.92	Horizontal

- Remark: 1. Measurement = Reading Level + Correct Factor.  
2. If Peak Result complies with AV limit, AV Result is deemed to comply with AV limit.  
3. Test setup: RBW: 1 MHz, VBW: 3 MHz, Sweep time: auto.  
4. Peak: Peak detector.  
5. AVG: VBW refer to section 6.2.  
6. For below 6.5GHz part, filter losses were only considered in the spurious frequency bands and the authorized band were not corrected for Band Reject Filter losses.  
The proper operation of the transmitter prior to adding the filter to the measurement chain.  
7. Only the worst case emission was recorded, if it complies with the limit, the other emissions deemed to comply with the limit.

Test Mode	Channel	Polarization	Verdict
11ax HE20	5260	Vertical	PASS

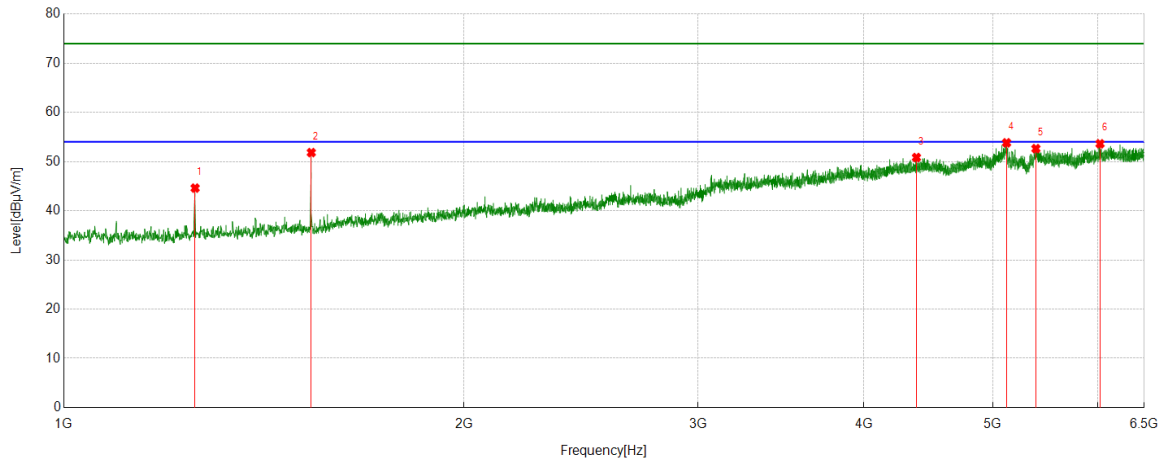


#### PK Result:

No.	Frequency [MHz]	Reading Level [dBuV]	Correct Factor [dB/m]	Result [dBuV/m]	Limit [dBuV/m]	Margin [dB]	Remark
1	1185.7984	43.33	-2.08	41.25	74.00	-32.75	Vertical
2	1255.4728	46.75	-1.16	45.59	74.00	-28.41	Vertical
3	1394.8216	44.72	-0.98	43.74	74.00	-30.26	Vertical
4	1535.3928	52.41	-0.58	51.83	74.00	-22.17	Vertical
5	5113.8460	36.27	16.57	52.84	74.00	-21.16	Vertical
6	5394.3772	35.83	16.95	52.78	74.00	-21.22	Vertical

- Remark: 1. Measurement = Reading Level + Correct Factor.  
2. If Peak Result complies with AV limit, AV Result is deemed to comply with AV limit.  
3. Test setup: RBW: 1 MHz, VBW: 3 MHz, Sweep time: auto.  
4. Peak: Peak detector.  
5. AVG: VBW refer to section 6.2.  
6. For below 6.5GHz part, filter losses were only considered in the spurious frequency bands and the authorized band were not corrected for Band Reject Filter losses.  
The proper operation of the transmitter prior to adding the filter to the measurement chain.  
7. Only the worst case emission was recorded, if it complies with the limit, the other emissions deemed to comply with the limit.

Test Mode	Channel	Polarization	Verdict
11ax HE20	5280	Horizontal	PASS



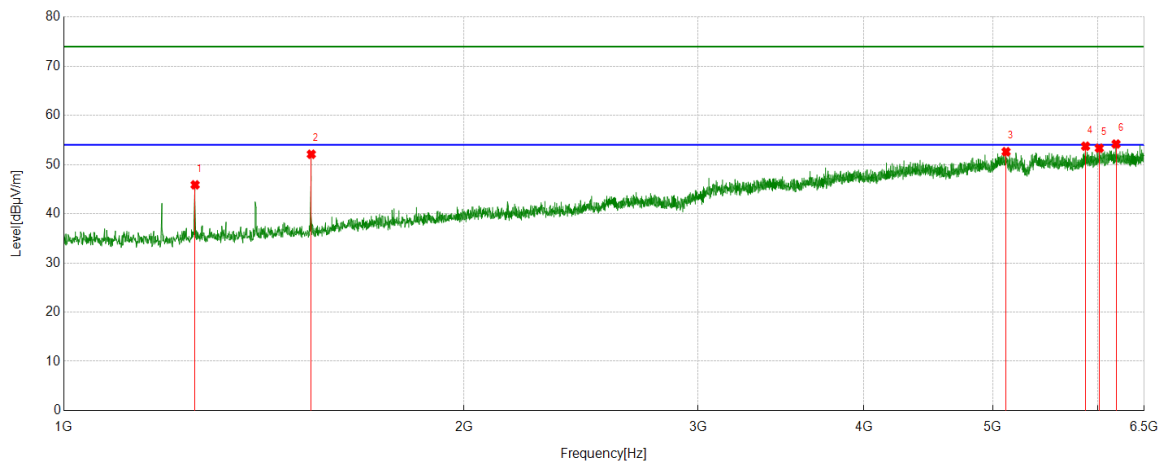
#### PK Result:

No.	Frequency [MHz]	Reading Level [dBuV]	Correct Factor [dB/m]	Result [dBuV/m]	Limit [dBuV/m]	Margin [dB]	Remark
1	1255.4728	45.77	-1.16	44.61	74.00	-29.39	Horizontal
2	1535.3928	52.41	-0.58	51.83	74.00	-22.17	Horizontal
3	4380.4312	36.94	13.89	50.83	74.00	-23.17	Horizontal
4	5120.5690	37.29	16.53	53.82	74.00	-20.18	Horizontal
5	5387.6542	35.69	16.94	52.63	74.00	-21.37	Horizontal
6	6020.8356	36.07	17.55	53.62	74.00	-20.38	Horizontal

- Remark: 1. Measurement = Reading Level + Correct Factor.  
2. If Peak Result complies with AV limit, AV Result is deemed to comply with AV limit.  
3. Test setup: RBW: 1 MHz, VBW: 3 MHz, Sweep time: auto.  
4. Peak: Peak detector.  
5. AVG: VBW refer to section 6.2.  
6. For below 6.5GHz part, filter losses were only considered in the spurious frequency bands and the authorized band were not corrected for Band Reject Filter losses.  
The proper operation of the transmitter prior to adding the filter to the measurement chain.  
7. Only the worst case emission was recorded, if it complies with the limit, the other emissions deemed to comply with the limit.



Test Mode	Channel	Polarization	Verdict
11ax HE20	5280	Vertical	PASS

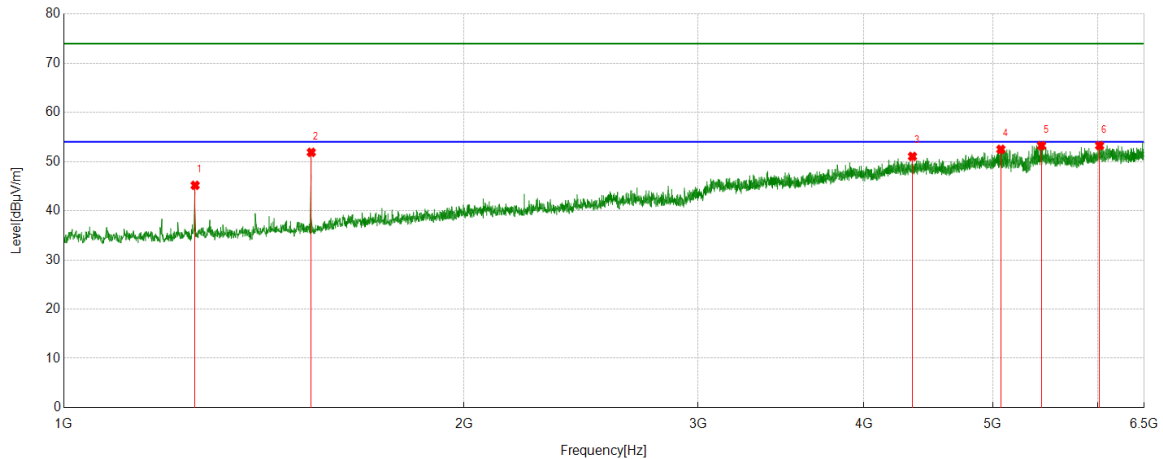


#### PK Result:

No.	Frequency [MHz]	Reading Level [dBuV]	Correct Factor [dB/m]	Result [dBuV/m]	Limit [dBuV/m]	Margin [dB]	Remark
1	1255.4728	47.04	-1.16	45.88	74.00	-28.12	Vertical
2	1535.3928	52.68	-0.58	52.10	74.00	-21.90	Vertical
3	5116.2907	36.07	16.55	52.62	74.00	-21.38	Vertical
4	5871.7080	36.35	17.39	53.74	74.00	-20.26	Vertical
5	6012.8903	35.69	17.64	53.33	74.00	-20.67	Vertical
6	6190.1322	34.91	18.27	53.18	74.00	-20.82	Vertical

- Remark: 1. Measurement = Reading Level + Correct Factor.  
2. If Peak Result complies with AV limit, AV Result is deemed to comply with AV limit.  
3. Test setup: RBW: 1 MHz, VBW: 3 MHz, Sweep time: auto.  
4. Peak: Peak detector.  
5. AVG: VBW refer to section 6.2.  
6. For below 6.5GHz part, filter losses were only considered in the spurious frequency bands and the authorized band were not corrected for Band Reject Filter losses.  
The proper operation of the transmitter prior to adding the filter to the measurement chain.  
7. Only the worst case emission was recorded, if it complies with the limit, the other emissions deemed to comply with the limit.

Test Mode	Channel	Polarization	Verdict
11ax HE20	5320	Horizontal	PASS

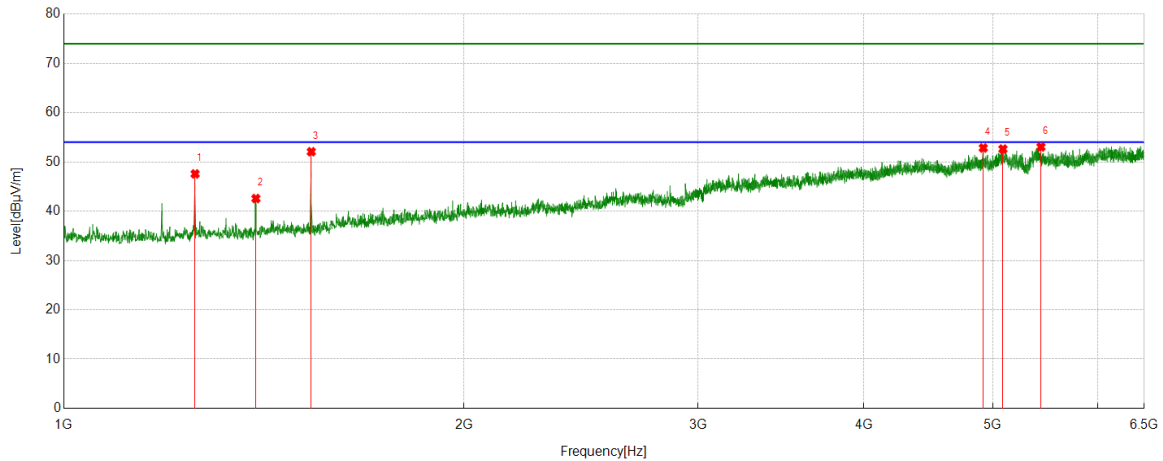


#### PK Result:

No.	Frequency [MHz]	Reading Level [dBuV]	Correct Factor [dB/m]	Result [dBuV/m]	Limit [dBuV/m]	Margin [dB]	Remark
1	1255.4728	46.33	-1.16	45.17	74.00	-28.83	Horizontal
2	1535.3928	52.46	-0.58	51.88	74.00	-22.12	Horizontal
3	4350.4834	37.18	13.87	51.05	74.00	-22.95	Horizontal
4	5070.4523	36.02	16.47	52.49	74.00	-21.51	Horizontal
5	5440.2156	36.64	16.61	53.25	74.00	-20.75	Horizontal
6	6016.5574	35.66	17.59	53.25	74.00	-20.75	Horizontal

- Remark: 1. Measurement = Reading Level + Correct Factor.  
2. If Peak Result complies with AV limit, AV Result is deemed to comply with AV limit.  
3. Test setup: RBW: 1 MHz, VBW: 3 MHz, Sweep time: auto.  
4. Peak: Peak detector.  
5. AVG: VBW refer to section 6.2.  
6. For below 6.5GHz part, filter losses were only considered in the spurious frequency bands and the authorized band were not corrected for Band Reject Filter losses.  
The proper operation of the transmitter prior to adding the filter to the measurement chain.  
7. Only the worst case emission was recorded, if it complies with the limit, the other emissions deemed to comply with the limit.

Test Mode	Channel	Polarization	Verdict
11ax HE20	5320	Vertical	PASS

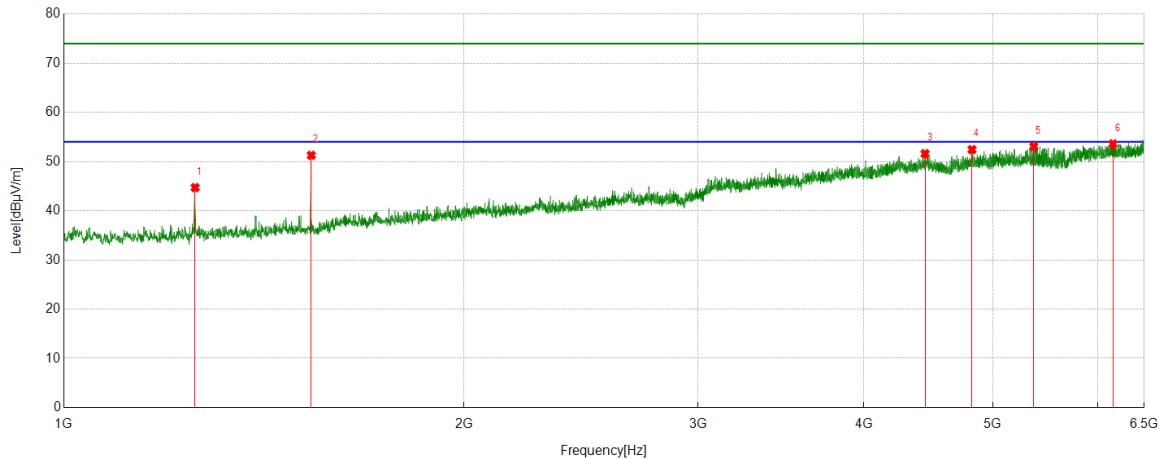


#### PK Result:

No.	Frequency [MHz]	Reading Level [dBuV]	Correct Factor [dB/m]	Result [dBuV/m]	Limit [dBuV/m]	Margin [dB]	Remark
1	1255.4728	48.73	-1.16	47.57	74.00	-26.43	Vertical
2	1394.8216	43.55	-0.98	42.57	74.00	-31.43	Vertical
3	1535.3928	52.65	-0.58	52.07	74.00	-21.93	Vertical
4	4918.2687	37.37	15.46	52.83	74.00	-21.17	Vertical
5	5088.7876	36.01	16.61	52.62	74.00	-21.38	Vertical
6	5435.3261	36.42	16.62	53.04	74.00	-20.96	Vertical

- Remark: 1. Measurement = Reading Level + Correct Factor.  
2. If Peak Result complies with AV limit, AV Result is deemed to comply with AV limit.  
3. Test setup: RBW: 1 MHz, VBW: 3 MHz, Sweep time: auto.  
4. Peak: Peak detector.  
5. AVG: VBW refer to section 6.2.  
6. For below 6.5GHz part, filter losses were only considered in the spurious frequency bands and the authorized band were not corrected for Band Reject Filter losses.  
The proper operation of the transmitter prior to adding the filter to the measurement chain.  
7. Only the worst case emission was recorded, if it complies with the limit, the other emissions deemed to comply with the limit.

Test Mode	Channel	Polarization	Verdict
11ax HE20	5500	Horizontal	PASS

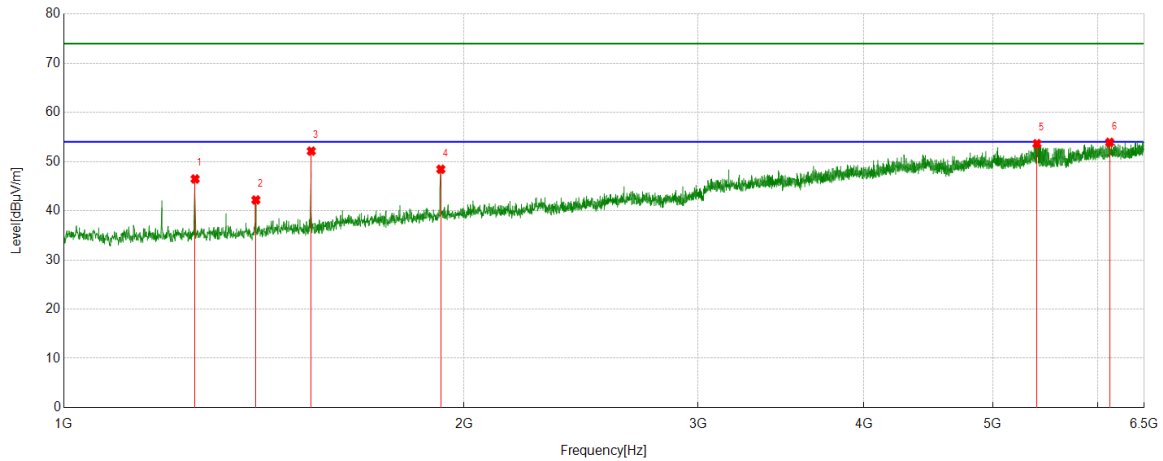


#### PK Result:

No.	Frequency [MHz]	Reading Level [dBuV]	Correct Factor [dB/m]	Result [dBuV/m]	Limit [dBuV/m]	Margin [dB]	Remark
1	1255.4728	46.19	-1.48	44.71	74.00	-29.29	Horizontal
2	1535.3928	51.99	-0.72	51.27	74.00	-22.73	Horizontal
3	4446.4385	36.75	14.85	51.60	74.00	-22.40	Horizontal
4	4822.9248	37.09	15.35	52.44	74.00	-21.56	Horizontal
5	5368.0965	36.47	16.59	53.06	74.00	-20.94	Horizontal
6	6157.1286	35.39	18.21	53.60	74.00	-20.40	Horizontal

- Remark: 1. Measurement = Reading Level + Correct Factor.  
2. If Peak Result complies with AV limit, AV Result is deemed to comply with AV limit.  
3. Test setup: RBW: 1 MHz, VBW: 3 MHz, Sweep time: auto.  
4. Peak: Peak detector.  
5. AVG: VBW refer to section 6.2.  
6. For below 6.5GHz part, filter losses were only considered in the spurious frequency bands and the authorized band were not corrected for Band Reject Filter losses.  
The proper operation of the transmitter prior to adding the filter to the measurement chain.  
7. Only the worst case emission was recorded, if it complies with the limit, the other emissions deemed to comply with the limit.

Test Mode	Channel	Polarization	Verdict
11ax HE20	5500	Vertical	PASS

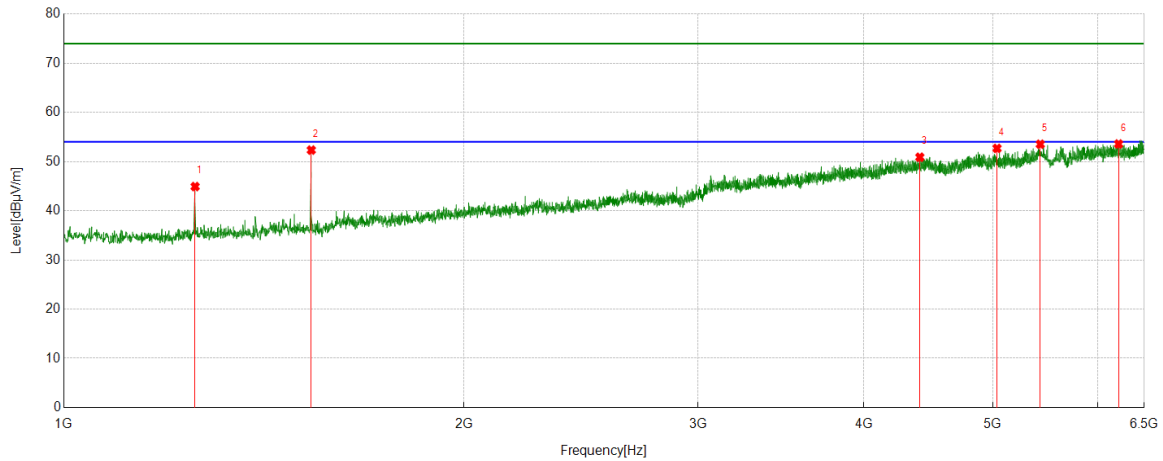


#### PK Result:

No.	Frequency [MHz]	Reading Level [dBuV]	Correct Factor [dB/m]	Result [dBuV/m]	Limit [dBuV/m]	Margin [dB]	Remark
1	1255.4728	47.94	-1.48	46.46	74.00	-27.54	Vertical
2	1394.8216	43.33	-1.14	42.19	74.00	-31.81	Vertical
3	1535.3928	52.85	-0.72	52.13	74.00	-21.87	Vertical
4	1921.6580	45.47	2.97	48.44	74.00	-25.56	Vertical
5	5397.4330	36.83	16.80	53.63	74.00	-20.37	Vertical
6	6122.2914	35.64	18.27	53.91	74.00	-20.09	Vertical

- Remark: 1. Measurement = Reading Level + Correct Factor.  
2. If Peak Result complies with AV limit, AV Result is deemed to comply with AV limit.  
3. Test setup: RBW: 1 MHz, VBW: 3 MHz, Sweep time: auto.  
4. Peak: Peak detector.  
5. AVG: VBW refer to section 6.2.  
6. For below 6.5GHz part, filter losses were only considered in the spurious frequency bands and the authorized band were not corrected for Band Reject Filter losses.  
The proper operation of the transmitter prior to adding the filter to the measurement chain.  
7. Only the worst case emission was recorded, if it complies with the limit, the other emissions deemed to comply with the limit.

Test Mode	Channel	Polarization	Verdict
11ax HE20	5580	Horizontal	PASS

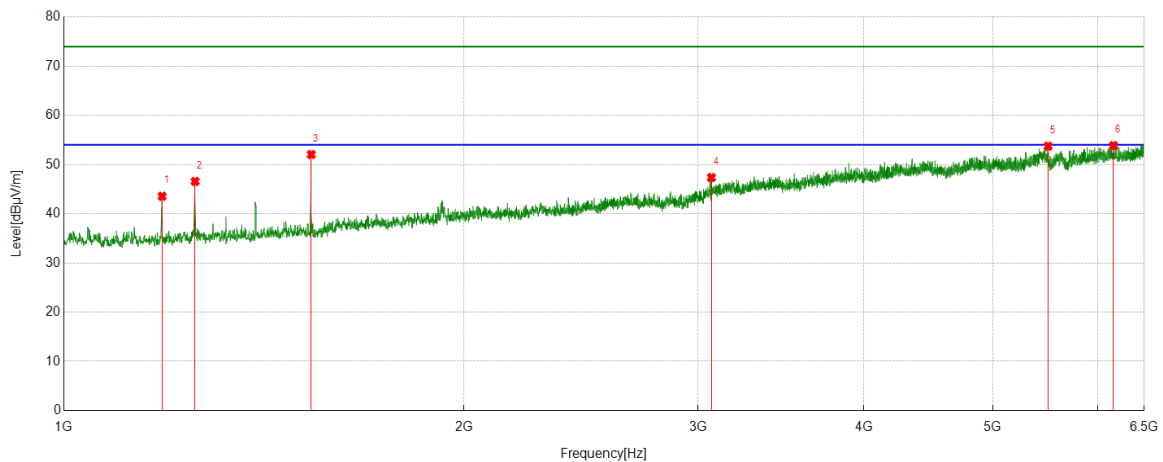


#### PK Result:

No.	Frequency [MHz]	Reading Level [dBuV]	Correct Factor [dB/m]	Result [dBuV/m]	Limit [dBuV/m]	Margin [dB]	Remark
1	1255.4728	46.40	-1.48	44.92	74.00	-29.08	Horizontal
2	1535.3928	53.06	-0.72	52.34	74.00	-21.66	Horizontal
3	4406.1007	36.71	14.18	50.89	74.00	-23.11	Horizontal
4	5036.8374	36.60	16.09	52.69	74.00	-21.31	Horizontal
5	5428.6032	35.70	17.83	53.53	74.00	-20.47	Horizontal
6	6217.6353	35.01	18.57	53.58	74.00	-20.42	Horizontal

- Remark: 1. Measurement = Reading Level + Correct Factor.  
2. If Peak Result complies with AV limit, AV Result is deemed to comply with AV limit.  
3. Test setup: RBW: 1 MHz, VBW: 3 MHz, Sweep time: auto.  
4. Peak: Peak detector.  
5. AVG: VBW refer to section 6.2.  
6. For below 6.5GHz part, filter losses were only considered in the spurious frequency bands and the authorized band were not corrected for Band Reject Filter losses.  
The proper operation of the transmitter prior to adding the filter to the measurement chain.  
7. Only the worst case emission was recorded, if it complies with the limit, the other emissions deemed to comply with the limit.

Test Mode	Channel	Polarization	Verdict
11ax HE20	5580	Vertical	PASS

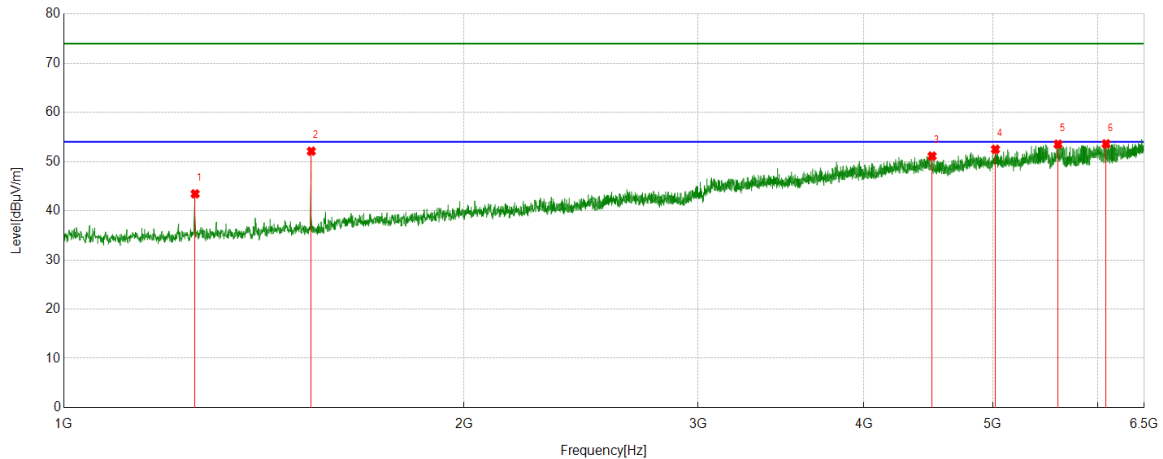


#### PK Result:

No.	Frequency [MHz]	Reading Level [dBuV]	Correct Factor [dB/m]	Result [dBuV/m]	Limit [dBuV/m]	Margin [dB]	Remark
1	1185.7984	45.48	-1.93	43.55	74.00	-30.45	Vertical
2	1255.4728	48.05	-1.48	46.57	74.00	-27.43	Vertical
3	1535.3928	52.77	-0.72	52.05	74.00	-21.95	Vertical
4	3070.6745	38.05	9.32	47.37	74.00	-26.63	Vertical
5	5503.1670	35.93	17.81	53.74	74.00	-20.26	Vertical
6	6163.2404	35.60	18.26	53.86	74.00	-20.14	Vertical

- Remark: 1. Measurement = Reading Level + Correct Factor.  
2. If Peak Result complies with AV limit, AV Result is deemed to comply with AV limit.  
3. Test setup: RBW: 1 MHz, VBW: 3 MHz, Sweep time: auto.  
4. Peak: Peak detector.  
5. AVG: VBW refer to section 6.2.  
6. For below 6.5GHz part, filter losses were only considered in the spurious frequency bands and the authorized band were not corrected for Band Reject Filter losses.  
The proper operation of the transmitter prior to adding the filter to the measurement chain.  
7. Only the worst case emission was recorded, if it complies with the limit, the other emissions deemed to comply with the limit.

Test Mode	Channel	Polarization	Verdict
11ax HE20	5700	Horizontal	PASS



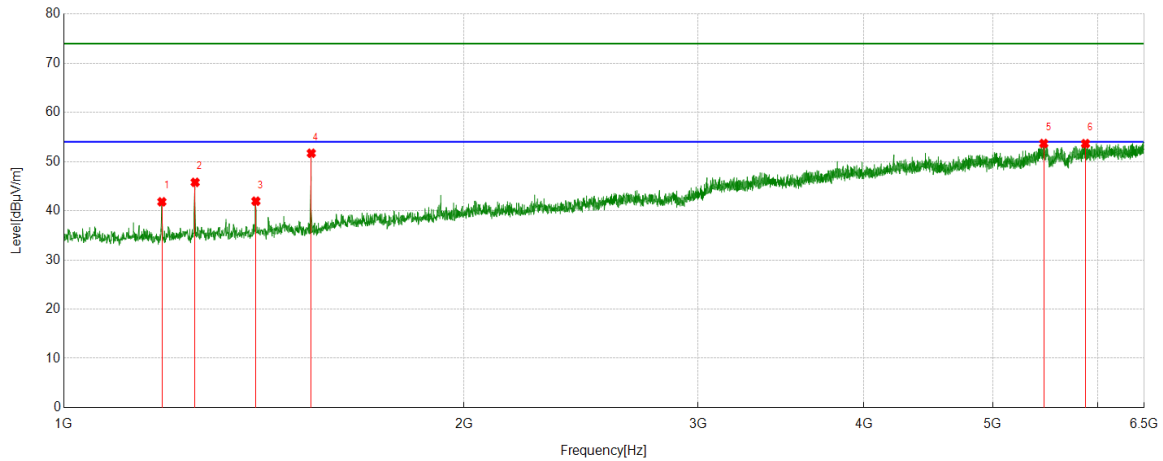
#### PK Result:

No.	Frequency [MHz]	Reading Level [dBuV]	Correct Factor [dB/m]	Result [dBuV/m]	Limit [dBuV/m]	Margin [dB]	Remark
1	1255.4728	44.92	-1.48	43.44	74.00	-30.56	Horizontal
2	1535.3928	52.83	-0.72	52.11	74.00	-21.89	Horizontal
3	4500.8334	36.84	14.28	51.12	74.00	-22.88	Horizontal
4	5022.7803	36.73	15.76	52.49	74.00	-21.51	Horizontal
5	5598.5109	35.76	17.77	53.53	74.00	-20.47	Horizontal
6	6084.3983	35.45	18.15	53.60	74.00	-20.40	Horizontal

- Remark: 1. Measurement = Reading Level + Correct Factor.  
2. If Peak Result complies with AV limit, AV Result is deemed to comply with AV limit.  
3. Test setup: RBW: 1 MHz, VBW: 3 MHz, Sweep time: auto.  
4. Peak: Peak detector.  
5. AVG: VBW refer to section 6.2.  
6. For below 6.5GHz part, filter losses were only considered in the spurious frequency bands and the authorized band were not corrected for Band Reject Filter losses.  
The proper operation of the transmitter prior to adding the filter to the measurement chain.  
7. Only the worst case emission was recorded, if it complies with the limit, the other emissions deemed to comply with the limit.



Test Mode	Channel	Polarization	Verdict
11ax HE20	5700	Vertical	PASS

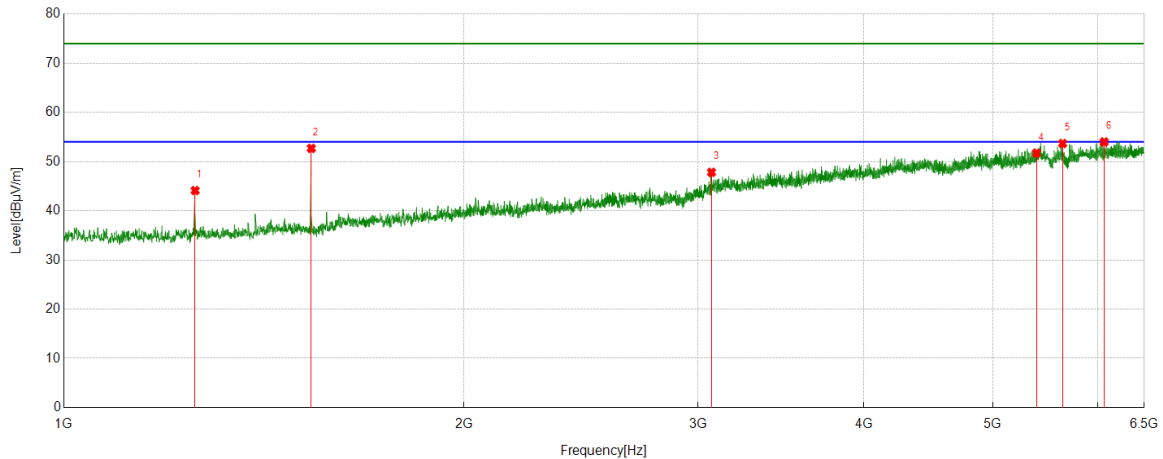


#### PK Result:

No.	Frequency [MHz]	Reading Level [dBuV]	Correct Factor [dB/m]	Result [dBuV/m]	Limit [dBuV/m]	Margin [dB]	Remark
1	1185.1872	43.73	-1.91	41.82	74.00	-32.18	Vertical
2	1255.4728	47.26	-1.48	45.78	74.00	-28.22	Vertical
3	1394.8216	43.09	-1.14	41.95	74.00	-32.05	Vertical
4	1535.3928	52.42	-0.72	51.70	74.00	-22.30	Vertical
5	5461.6068	35.81	17.87	53.68	74.00	-20.32	Vertical
6	5871.0968	35.80	17.85	53.65	74.00	-20.35	Vertical

- Remark: 1. Measurement = Reading Level + Correct Factor.  
2. If Peak Result complies with AV limit, AV Result is deemed to comply with AV limit.  
3. Test setup: RBW: 1 MHz, VBW: 3 MHz, Sweep time: auto.  
4. Peak: Peak detector.  
5. AVG: VBW refer to section 6.2.  
6. For below 6.5GHz part, filter losses were only considered in the spurious frequency bands and the authorized band were not corrected for Band Reject Filter losses.  
The proper operation of the transmitter prior to adding the filter to the measurement chain.  
7. Only the worst case emission was recorded, if it complies with the limit, the other emissions deemed to comply with the limit.

Test Mode	Channel	Polarization	Verdict
11ax HE20	5720	Horizontal	PASS

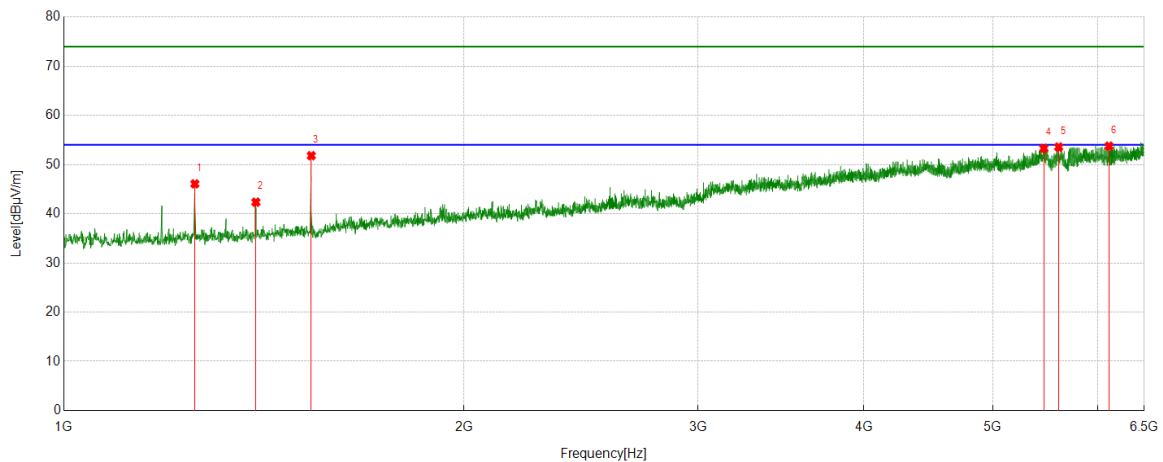


#### PK Result:

No.	Frequency [MHz]	Reading Level [dBuV]	Correct Factor [dB/m]	Result [dBuV/m]	Limit [dBuV/m]	Margin [dB]	Remark
1	1255.4728	45.59	-1.48	44.11	74.00	-29.89	Horizontal
2	1535.3928	53.41	-0.72	52.69	74.00	-21.81	Horizontal
3	3071.2857	38.46	9.36	47.82	74.00	-26.18	Horizontal
4	5436.5485	35.82	17.90	53.72	74.00	-20.28	Horizontal
5	5643.1270	36.06	17.62	53.68	74.00	-20.32	Horizontal
6	6171.1857	35.12	18.34	53.46	74.00	-20.54	Horizontal

- Remark: 1. Measurement = Reading Level + Correct Factor.  
2. If Peak Result complies with AV limit, AV Result is deemed to comply with AV limit.  
3. Test setup: RBW: 1 MHz, VBW: 3 MHz, Sweep time: auto.  
4. Peak: Peak detector.  
5. AVG: VBW refer to section 6.2.  
6. For below 6.5GHz part, filter losses were only considered in the spurious frequency bands and the authorized band were not corrected for Band Reject Filter losses.  
The proper operation of the transmitter prior to adding the filter to the measurement chain.  
7. Only the worst case emission was recorded, if it complies with the limit, the other emissions deemed to comply with the limit.

Test Mode	Channel	Polarization	Verdict
11ax HE20	5720	Vertical	PASS

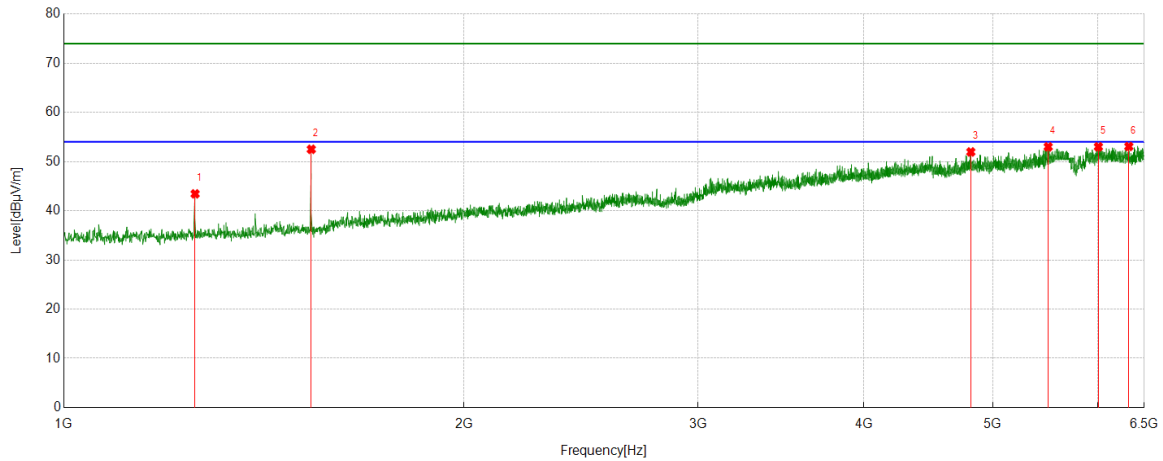


#### PK Result:

No.	Frequency [MHz]	Reading Level [dBuV]	Correct Factor [dB/m]	Result [dBuV/m]	Limit [dBuV/m]	Margin [dB]	Remark
1	1254.8617	47.55	-1.47	46.08	74.00	-27.92	Vertical
2	1394.8216	43.50	-1.14	42.36	74.00	-31.64	Vertical
3	1535.3928	52.53	-0.72	51.81	74.00	-22.19	Vertical
4	5461.6068	35.42	17.87	53.29	74.00	-20.71	Vertical
5	5604.6227	35.81	17.76	53.57	74.00	-20.43	Vertical
6	6115.5684	35.52	18.23	53.75	74.00	-20.25	Vertical

- Remark: 1. Measurement = Reading Level + Correct Factor.  
2. If Peak Result complies with AV limit, AV Result is deemed to comply with AV limit.  
3. Test setup: RBW: 1 MHz, VBW: 3 MHz, Sweep time: auto.  
4. Peak: Peak detector.  
5. AVG: VBW refer to section 6.2.  
6. For below 6.5GHz part, filter losses were only considered in the spurious frequency bands and the authorized band were not corrected for Band Reject Filter losses.  
The proper operation of the transmitter prior to adding the filter to the measurement chain.  
7. Only the worst case emission was recorded, if it complies with the limit, the other emissions deemed to comply with the limit.

Test Mode	Channel	Polarization	Verdict
11ax HE20	5745	Horizontal	PASS

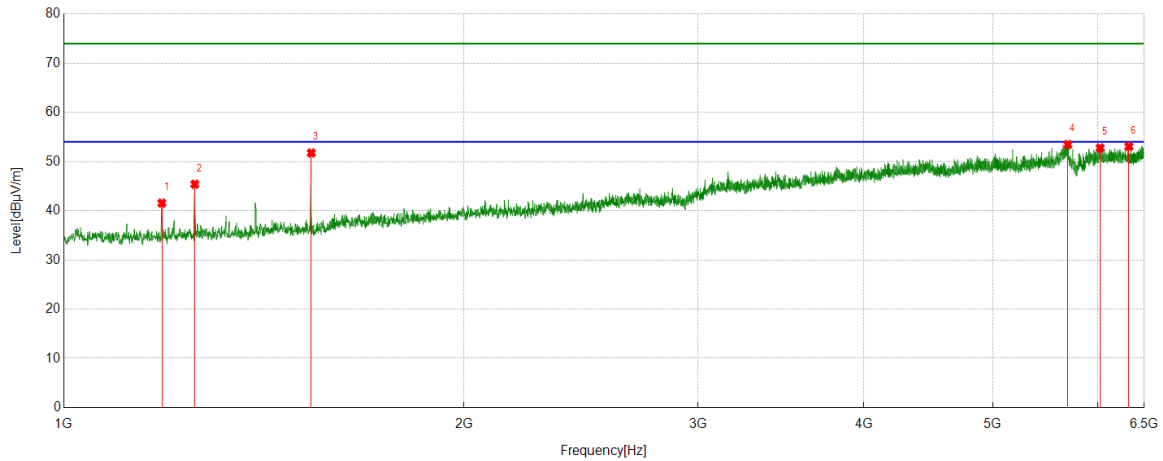


#### PK Result:

No.	Frequency [MHz]	Reading Level [dBuV]	Correct Factor [dB/m]	Result [dBuV/m]	Limit [dBuV/m]	Margin [dB]	Remark
1	1255.4728	45.03	-1.59	43.44	74.00	-30.56	Horizontal
2	1535.3928	52.88	-0.38	52.50	74.00	-21.50	Horizontal
3	4813.1459	36.99	14.97	51.96	74.00	-22.04	Horizontal
4	5503.7782	36.99	16.01	53.00	74.00	-21.00	Horizontal
5	6003.7226	35.67	17.34	53.01	74.00	-20.99	Horizontal
6	6328.8699	34.56	18.51	53.07	74.00	-20.93	Horizontal

- Remark: 1. Measurement = Reading Level + Correct Factor.  
2. If Peak Result complies with AV limit, AV Result is deemed to comply with AV limit.  
3. Test setup: RBW: 1 MHz, VBW: 3 MHz, Sweep time: auto.  
4. Peak: Peak detector.  
5. AVG: VBW refer to section 6.2.  
6. For below 6.5GHz part, filter losses were only considered in the spurious frequency bands and the authorized band were not corrected for Band Reject Filter losses.  
The proper operation of the transmitter prior to adding the filter to the measurement chain.  
7. Only the worst case emission was recorded, if it complies with the limit, the other emissions deemed to comply with the limit.

Test Mode	Channel	Polarization	Verdict
11ax HE20	5745	Vertical	PASS

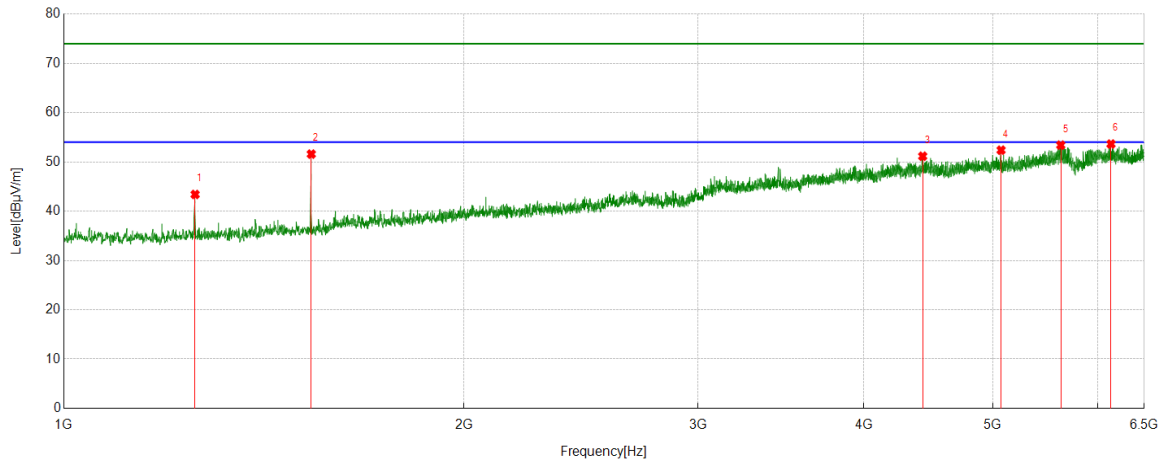


#### PK Result:

No.	Frequency [MHz]	Reading Level [dBuV]	Correct Factor [dB/m]	Result [dBuV/m]	Limit [dBuV/m]	Margin [dB]	Remark
1	1185.1872	43.46	-1.91	41.55	74.00	-32.45	Vertical
2	1254.8617	47.00	-1.60	45.40	74.00	-28.60	Vertical
3	1535.3928	52.13	-0.38	51.75	74.00	-22.25	Vertical
4	5694.4661	36.88	16.57	53.45	74.00	-20.55	Vertical
5	6022.0580	35.41	17.37	52.78	74.00	-21.22	Vertical
6	6329.4811	34.57	18.49	53.06	74.00	-20.94	Vertical

- Remark: 1. Measurement = Reading Level + Correct Factor.  
2. If Peak Result complies with AV limit, AV Result is deemed to comply with AV limit.  
3. Test setup: RBW: 1 MHz, VBW: 3 MHz, Sweep time: auto.  
4. Peak: Peak detector.  
5. AVG: VBW refer to section 6.2.  
6. For below 6.5GHz part, filter losses were only considered in the spurious frequency bands and the authorized band were not corrected for Band Reject Filter losses.  
The proper operation of the transmitter prior to adding the filter to the measurement chain.  
7. Only the worst case emission was recorded, if it complies with the limit, the other emissions deemed to comply with the limit.

Test Mode	Channel	Polarization	Verdict
11ax HE20	5785	Horizontal	PASS

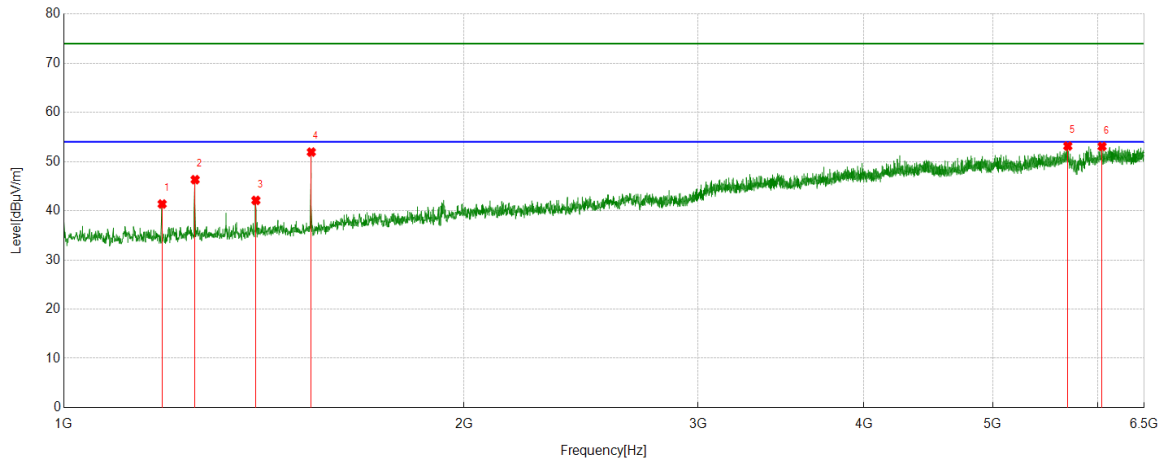


#### PK Result:

No.	Frequency [MHz]	Reading Level [dBuV]	Correct Factor [dB/m]	Result [dBuV/m]	Limit [dBuV/m]	Margin [dB]	Remark
1	1255.4728	44.99	-1.59	43.40	74.00	-30.60	Horizontal
2	1535.3928	51.97	-0.38	51.59	74.00	-22.41	Horizontal
3	4428.1031	37.39	13.77	51.16	74.00	-22.84	Horizontal
4	5072.2858	37.46	14.93	52.39	74.00	-21.61	Horizontal
5	5624.7916	36.95	16.46	53.41	74.00	-20.59	Horizontal
6	6136.3485	35.95	17.68	53.63	74.00	-20.37	Horizontal

- Remark: 1. Measurement = Reading Level + Correct Factor.  
2. If Peak Result complies with AV limit, AV Result is deemed to comply with AV limit.  
3. Test setup: RBW: 1 MHz, VBW: 3 MHz, Sweep time: auto.  
4. Peak: Peak detector.  
5. AVG: VBW refer to section 6.2.  
6. For below 6.5GHz part, filter losses were only considered in the spurious frequency bands and the authorized band were not corrected for Band Reject Filter losses.  
The proper operation of the transmitter prior to adding the filter to the measurement chain.  
7. Only the worst case emission was recorded, if it complies with the limit, the other emissions deemed to comply with the limit.

Test Mode	Channel	Polarization	Verdict
11ax HE20	5785	Vertical	PASS

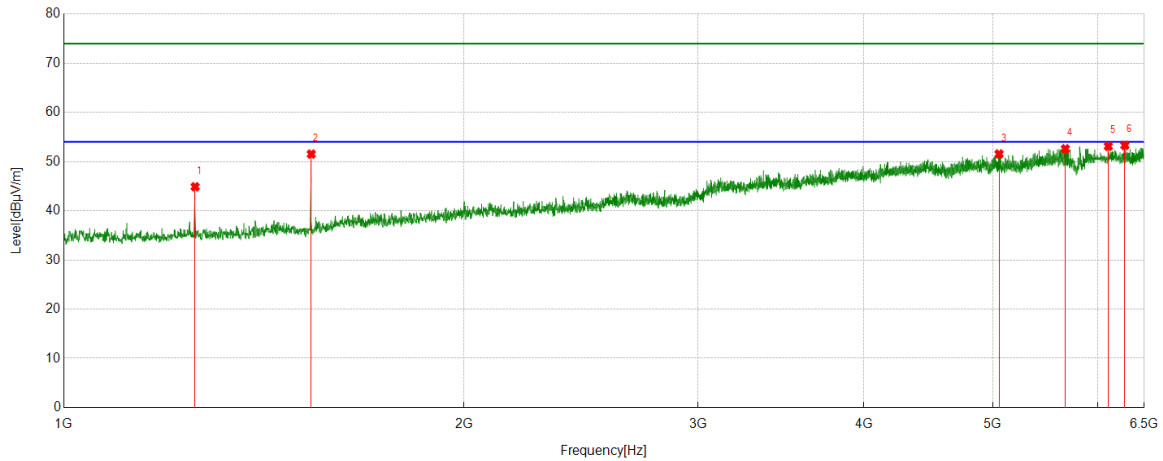


#### PK Result:

No.	Frequency [MHz]	Reading Level [dBuV]	Correct Factor [dB/m]	Result [dBuV/m]	Limit [dBuV/m]	Margin [dB]	Remark
1	1185.7984	43.26	-1.89	41.37	74.00	-32.63	Vertical
2	1255.4728	47.91	-1.59	46.32	74.00	-27.68	Vertical
3	1394.8216	43.26	-1.15	42.11	74.00	-31.89	Vertical
4	1535.3928	52.31	-0.38	51.93	74.00	-22.07	Vertical
5	5693.8549	36.57	16.58	53.15	74.00	-20.85	Vertical
6	6042.2269	35.45	17.63	53.08	74.00	-20.92	Vertical

- Remark: 1. Measurement = Reading Level + Correct Factor.  
2. If Peak Result complies with AV limit, AV Result is deemed to comply with AV limit.  
3. Test setup: RBW: 1 MHz, VBW: 3 MHz, Sweep time: auto.  
4. Peak: Peak detector.  
5. AVG: VBW refer to section 6.2.  
6. For below 6.5GHz part, filter losses were only considered in the spurious frequency bands and the authorized band were not corrected for Band Reject Filter losses.  
The proper operation of the transmitter prior to adding the filter to the measurement chain.  
7. Only the worst case emission was recorded, if it complies with the limit, the other emissions deemed to comply with the limit.

Test Mode	Channel	Polarization	Verdict
11ax HE20	5825	Horizontal	PASS



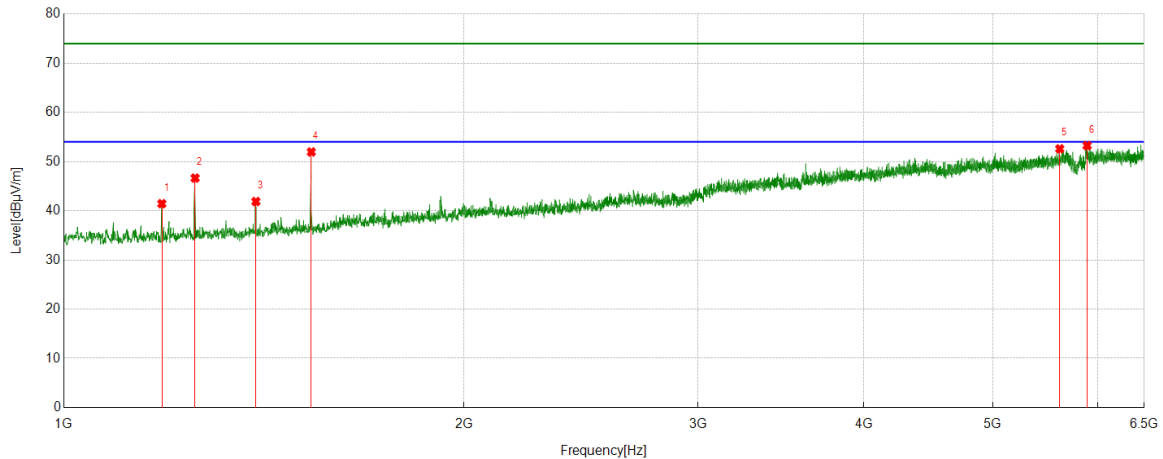
#### PK Result:

No.	Frequency [MHz]	Reading Level [dBuV]	Correct Factor [dB/m]	Result [dBuV/m]	Limit [dBuV/m]	Margin [dB]	Remark
1	1255.4728	46.47	-1.59	44.88	74.00	-29.12	Horizontal
2	1535.3928	51.91	-0.38	51.53	74.00	-22.47	Horizontal
3	5054.5616	36.58	14.97	51.55	74.00	-22.45	Horizontal
4	5670.0189	35.93	16.67	52.60	74.00	-21.40	Horizontal
5	6108.2342	35.45	17.67	53.12	74.00	-20.88	Horizontal
6	6285.4762	34.77	18.53	53.30	74.00	-20.70	Horizontal

- Remark: 1. Measurement = Reading Level + Correct Factor.  
2. If Peak Result complies with AV limit, AV Result is deemed to comply with AV limit.  
3. Test setup: RBW: 1 MHz, VBW: 3 MHz, Sweep time: auto.  
4. Peak: Peak detector.  
5. AVG: VBW refer to section 6.2.  
6. For below 6.5GHz part, filter losses were only considered in the spurious frequency bands and the authorized band were not corrected for Band Reject Filter losses.  
The proper operation of the transmitter prior to adding the filter to the measurement chain.  
7. Only the worst case emission was recorded, if it complies with the limit, the other emissions deemed to comply with the limit.



Test Mode	Channel	Polarization	Verdict
11ax HE20	5825	Vertical	PASS

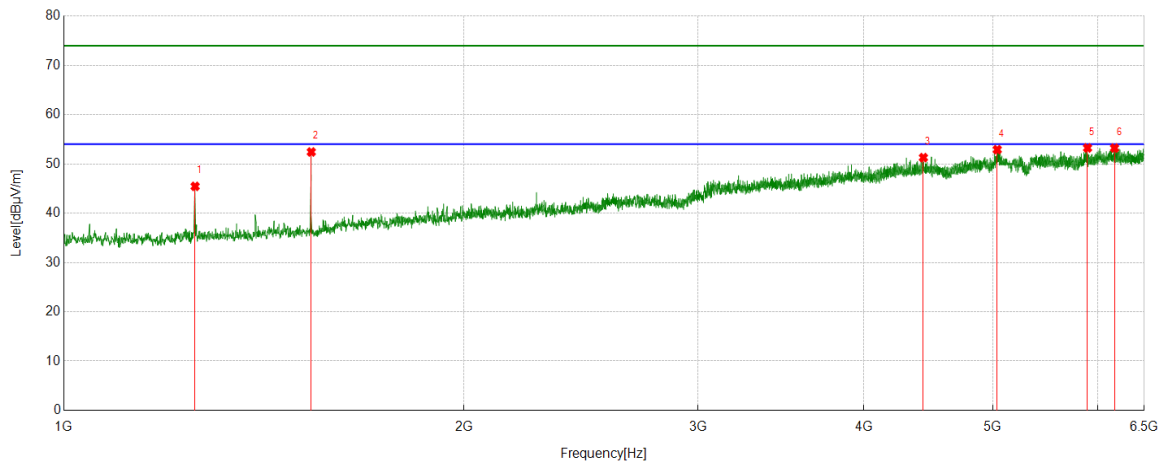


#### PK Result:

No.	Frequency [MHz]	Reading Level [dBuV]	Correct Factor [dB/m]	Result [dBuV/m]	Limit [dBuV/m]	Margin [dB]	Remark
1	1185.1872	43.35	-1.91	41.44	74.00	-32.56	Vertical
2	1255.4728	48.23	-1.59	46.64	74.00	-27.36	Vertical
3	1394.8216	43.03	-1.15	41.88	74.00	-32.12	Vertical
4	1535.3928	52.34	-0.38	51.96	74.00	-22.04	Vertical
5	5615.0128	36.08	16.52	52.60	74.00	-21.40	Vertical
6	5887.5986	36.17	17.09	53.26	74.00	-20.74	Vertical

- Remark: 1. Measurement = Reading Level + Correct Factor.  
2. If Peak Result complies with AV limit, AV Result is deemed to comply with AV limit.  
3. Test setup: RBW: 1 MHz, VBW: 3 MHz, Sweep time: auto.  
4. Peak: Peak detector.  
5. AVG: VBW refer to section 6.2.  
6. For below 6.5GHz part, filter losses were only considered in the spurious frequency bands and the authorized band were not corrected for Band Reject Filter losses.  
The proper operation of the transmitter prior to adding the filter to the measurement chain.  
7. Only the worst case emission was recorded, if it complies with the limit, the other emissions deemed to comply with the limit.

Test Mode	Channel	Polarization	Verdict
11ax HE40	5190	Horizontal	PASS

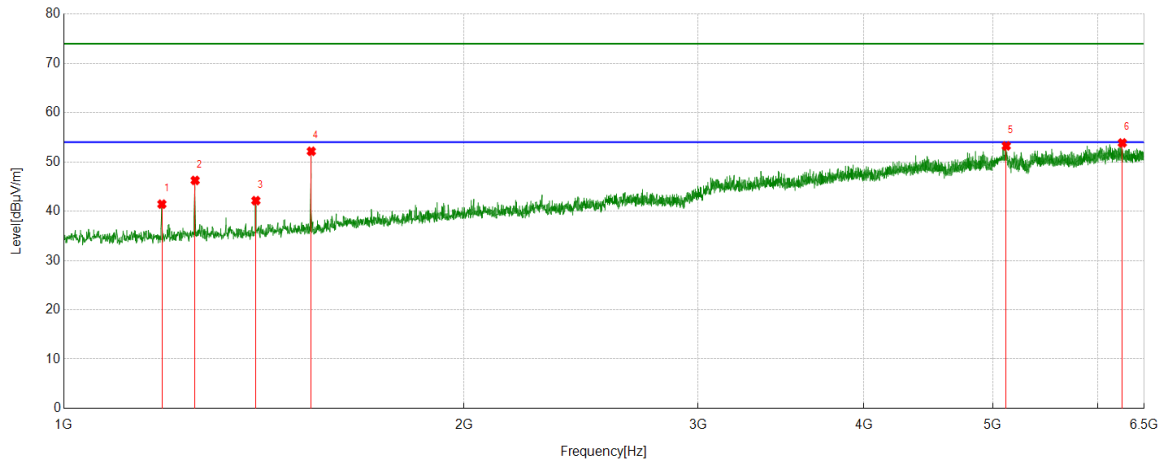


#### PK Result:

No.	Frequency [MHz]	Reading Level [dBuV]	Correct Factor [dB/m]	Result [dBuV/m]	Limit [dBuV/m]	Margin [dB]	Remark
1	1255.4728	46.61	-1.16	45.45	74.00	-28.55	Horizontal
2	1535.3928	53.01	-0.58	52.43	74.00	-21.57	Horizontal
3	4433.6037	37.07	14.21	51.28	74.00	-22.72	Horizontal
4	5038.6710	37.13	15.77	52.90	74.00	-21.10	Horizontal
5	5891.8769	35.28	17.96	53.24	74.00	-20.76	Horizontal
6	6174.2416	35.01	18.21	53.22	74.00	-20.78	Horizontal

- Remark: 1. Measurement = Reading Level + Correct Factor.  
2. If Peak Result complies with AV limit, AV Result is deemed to comply with AV limit.  
3. Test setup: RBW: 1 MHz, VBW: 3 MHz, Sweep time: auto.  
4. Peak: Peak detector.  
5. AVG: VBW refer to section 6.2.  
6. For below 6.5GHz part, filter losses were only considered in the spurious frequency bands and the authorized band were not corrected for Band Reject Filter losses.  
The proper operation of the transmitter prior to adding the filter to the measurement chain.  
7. Only the worst case emission was recorded, if it complies with the limit, the other emissions deemed to comply with the limit.

Test Mode	Channel	Polarization	Verdict
11ax HE40	5190	Vertical	PASS

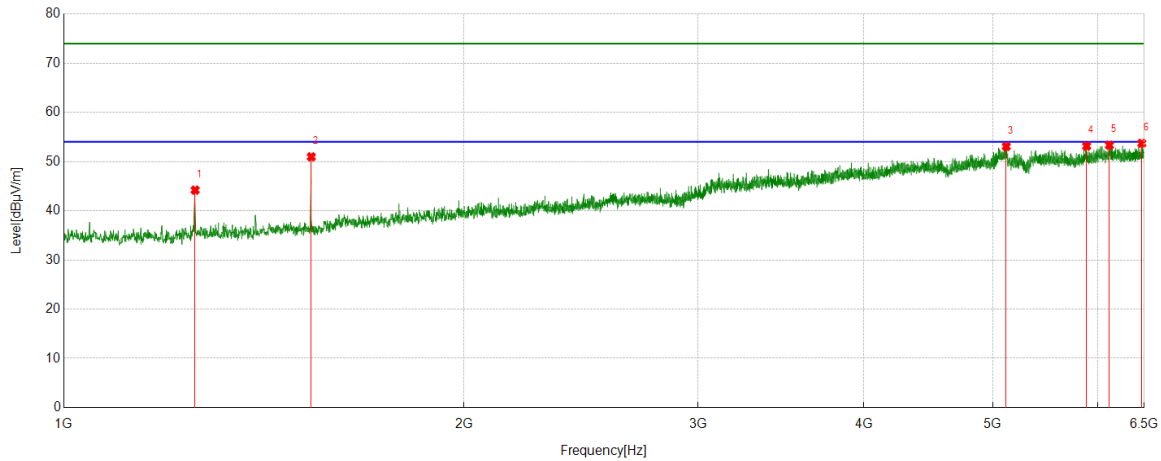


#### PK Result:

No.	Frequency [MHz]	Reading Level [dBuV]	Correct Factor [dB/m]	Result [dBuV/m]	Limit [dBuV/m]	Margin [dB]	Remark
1	1185.1872	43.49	-2.06	41.43	74.00	-32.57	Vertical
2	1255.4728	47.41	-1.16	46.25	74.00	-27.75	Vertical
3	1394.8216	43.12	-0.98	42.14	74.00	-31.86	Vertical
4	1535.3928	52.74	-0.58	52.16	74.00	-21.84	Vertical
5	5118.1242	36.71	16.54	53.25	74.00	-20.75	Vertical
6	6257.9731	35.18	18.68	53.86	74.00	-20.14	Vertical

- Remark: 1. Measurement = Reading Level + Correct Factor.  
2. If Peak Result complies with AV limit, AV Result is deemed to comply with AV limit.  
3. Test setup: RBW: 1 MHz, VBW: 3 MHz, Sweep time: auto.  
4. Peak: Peak detector.  
5. AVG: VBW refer to section 6.2.  
6. For below 6.5GHz part, filter losses were only considered in the spurious frequency bands and the authorized band were not corrected for Band Reject Filter losses.  
The proper operation of the transmitter prior to adding the filter to the measurement chain.  
7. Only the worst case emission was recorded, if it complies with the limit, the other emissions deemed to comply with the limit.

Test Mode	Channel	Polarization	Verdict
11ax HE40	5230	Horizontal	PASS

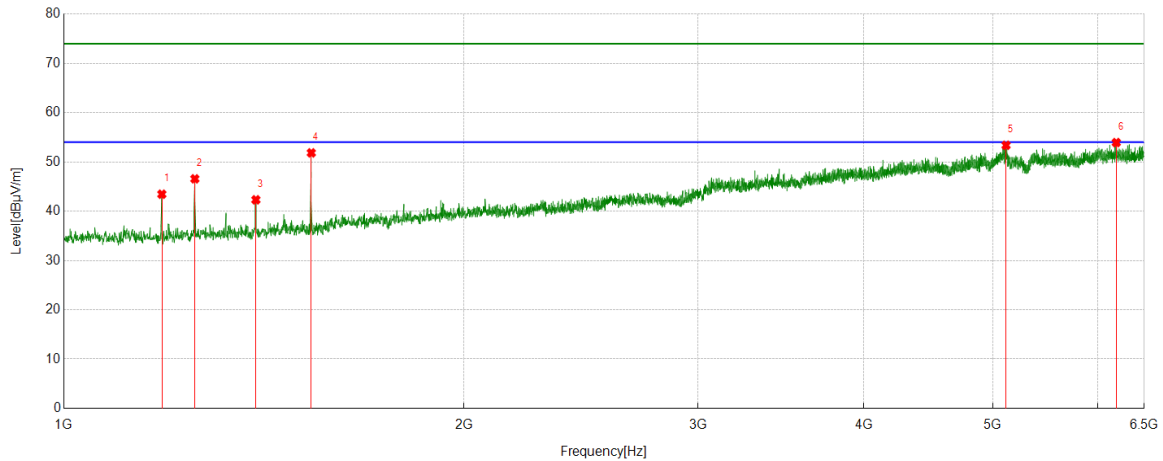


#### PK Result:

No.	Frequency [MHz]	Reading Level [dBuV]	Correct Factor [dB/m]	Result [dBuV/m]	Limit [dBuV/m]	Margin [dB]	Remark
1	1255.4728	45.36	-1.16	44.20	74.00	-29.80	Horizontal
2	1535.3928	51.55	-0.58	50.97	74.00	-23.03	Horizontal
3	5118.1242	36.54	16.54	53.08	74.00	-20.92	Horizontal
4	5882.7092	35.64	17.51	53.15	74.00	-20.85	Horizontal
5	6119.2355	34.99	18.34	53.33	74.00	-20.67	Horizontal
6	6472.4969	34.15	19.56	53.71	74.00	-20.29	Horizontal

- Remark: 1. Measurement = Reading Level + Correct Factor.  
2. If Peak Result complies with AV limit, AV Result is deemed to comply with AV limit.  
3. Test setup: RBW: 1 MHz, VBW: 3 MHz, Sweep time: auto.  
4. Peak: Peak detector.  
5. AVG: VBW refer to section 6.2.  
6. For below 6.5GHz part, filter losses were only considered in the spurious frequency bands and the authorized band were not corrected for Band Reject Filter losses.  
The proper operation of the transmitter prior to adding the filter to the measurement chain.  
7. Only the worst case emission was recorded, if it complies with the limit, the other emissions deemed to comply with the limit.

Test Mode	Channel	Polarization	Verdict
11ax HE40	5230	Vertical	PASS

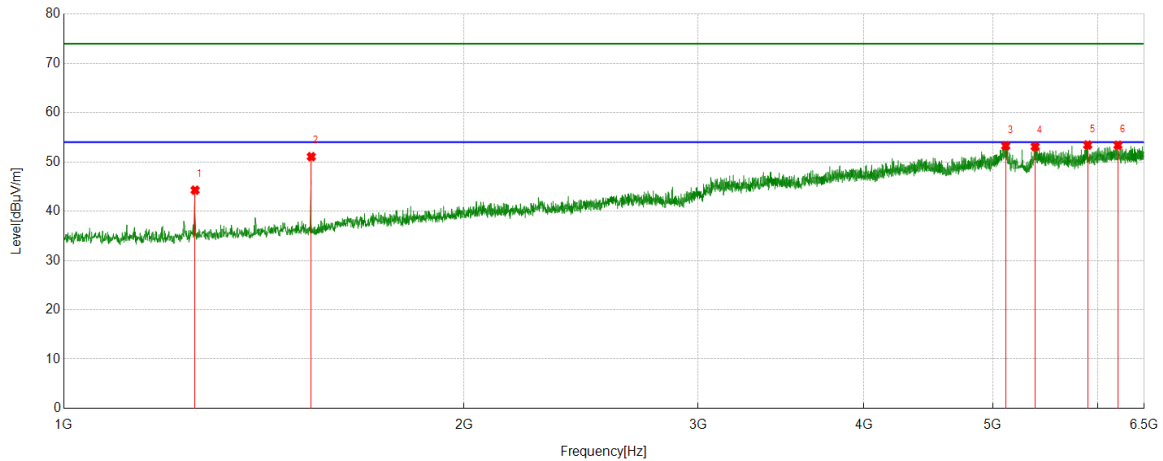


#### PK Result:

No.	Frequency [MHz]	Reading Level [dBuV]	Correct Factor [dB/m]	Result [dBuV/m]	Limit [dBuV/m]	Margin [dB]	Remark
1	1185.1872	45.51	-2.06	43.45	74.00	-30.55	Vertical
2	1254.8617	47.72	-1.15	46.57	74.00	-27.43	Vertical
3	1394.8216	43.29	-0.98	42.31	74.00	-31.69	Vertical
4	1535.3928	52.42	-0.58	51.84	74.00	-22.16	Vertical
5	5116.2907	36.83	16.55	53.38	74.00	-20.62	Vertical
6	6192.5770	35.65	18.28	53.93	74.00	-20.07	Vertical

- Remark: 1. Measurement = Reading Level + Correct Factor.  
2. If Peak Result complies with AV limit, AV Result is deemed to comply with AV limit.  
3. Test setup: RBW: 1 MHz, VBW: 3 MHz, Sweep time: auto.  
4. Peak: Peak detector.  
5. AVG: VBW refer to section 6.2.  
6. For below 6.5GHz part, filter losses were only considered in the spurious frequency bands and the authorized band were not corrected for Band Reject Filter losses.  
The proper operation of the transmitter prior to adding the filter to the measurement chain.  
7. Only the worst case emission was recorded, if it complies with the limit, the other emissions deemed to comply with the limit.

Test Mode	Channel	Polarization	Verdict
11ax HE40	5270	Horizontal	PASS

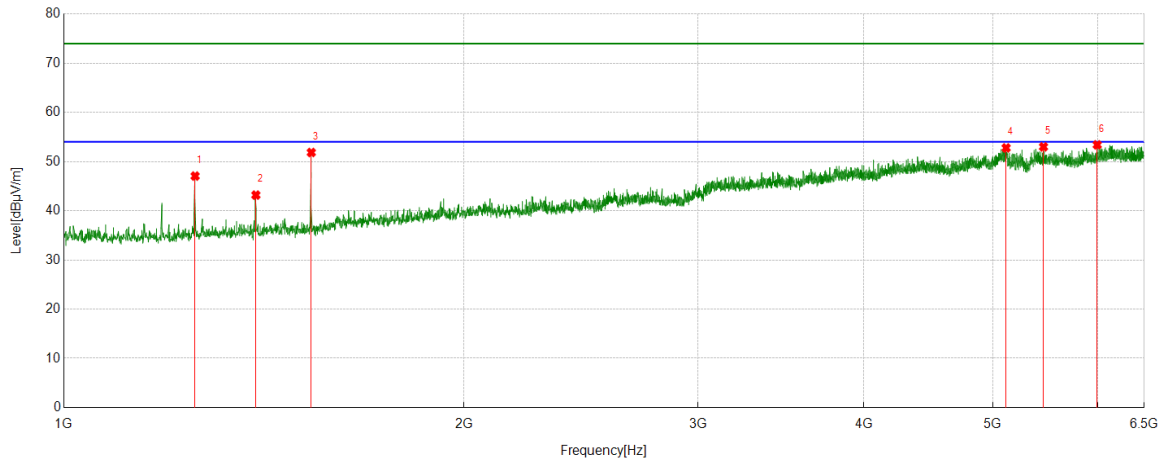


#### PK Result:

No.	Frequency [MHz]	Reading Level [dBuV]	Correct Factor [dB/m]	Result [dBuV/m]	Limit [dBuV/m]	Margin [dB]	Remark
1	1255.4728	45.43	-1.16	44.27	74.00	-29.73	Horizontal
2	1535.3928	51.65	-0.58	51.07	74.00	-22.93	Horizontal
3	5113.2348	36.69	16.57	53.26	74.00	-20.74	Horizontal
4	5380.9312	36.19	16.92	53.11	74.00	-20.89	Horizontal
5	5893.7104	35.58	17.85	53.43	74.00	-20.57	Horizontal
6	6210.9123	34.74	18.65	53.39	74.00	-20.61	Horizontal

- Remark: 1. Measurement = Reading Level + Correct Factor.  
2. If Peak Result complies with AV limit, AV Result is deemed to comply with AV limit.  
3. Test setup: RBW: 1 MHz, VBW: 3 MHz, Sweep time: auto.  
4. Peak: Peak detector.  
5. AVG: VBW refer to section 6.2.  
6. For below 6.5GHz part, filter losses were only considered in the spurious frequency bands and the authorized band were not corrected for Band Reject Filter losses.  
The proper operation of the transmitter prior to adding the filter to the measurement chain.  
7. Only the worst case emission was recorded, if it complies with the limit, the other emissions deemed to comply with the limit.

Test Mode	Channel	Polarization	Verdict
11ax HE40	5270	Vertical	PASS

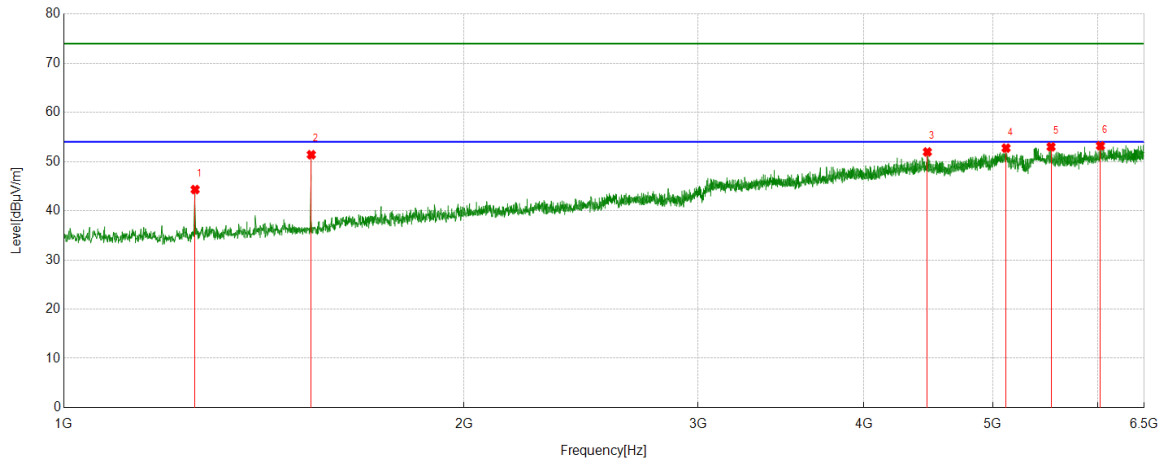


#### PK Result:

No.	Frequency [MHz]	Reading Level [dBuV]	Correct Factor [dB/m]	Result [dBuV/m]	Limit [dBuV/m]	Margin [dB]	Remark
1	1255.4728	48.22	-1.16	47.06	74.00	-26.94	Vertical
2	1394.8216	44.17	-0.98	43.19	74.00	-30.81	Vertical
3	1535.3928	52.43	-0.58	51.85	74.00	-22.15	Vertical
4	5116.9019	36.23	16.55	52.78	74.00	-21.22	Vertical
5	5459.1621	36.29	16.71	53.00	74.00	-21.00	Vertical
6	5991.4991	35.62	17.78	53.40	74.00	-20.60	Vertical

- Remark: 1. Measurement = Reading Level + Correct Factor.  
2. If Peak Result complies with AV limit, AV Result is deemed to comply with AV limit.  
3. Test setup: RBW: 1 MHz, VBW: 3 MHz, Sweep time: auto.  
4. Peak: Peak detector.  
5. AVG: VBW refer to section 6.2.  
6. For below 6.5GHz part, filter losses were only considered in the spurious frequency bands and the authorized band were not corrected for Band Reject Filter losses.  
The proper operation of the transmitter prior to adding the filter to the measurement chain.  
7. Only the worst case emission was recorded, if it complies with the limit, the other emissions deemed to comply with the limit.

Test Mode	Channel	Polarization	Verdict
11ax HE40	5310	Horizontal	PASS



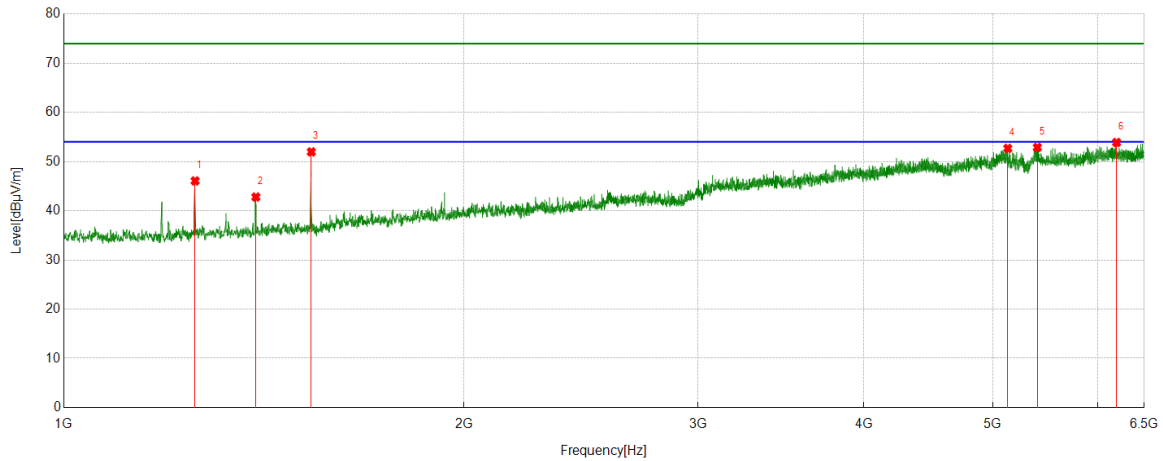
#### PK Result:

No.	Frequency [MHz]	Reading Level [dBuV]	Correct Factor [dB/m]	Result [dBuV/m]	Limit [dBuV/m]	Margin [dB]	Remark
1	1255.4728	45.47	-1.16	44.31	74.00	-29.69	Horizontal
2	1535.3928	51.98	-0.58	51.40	74.00	-22.60	Horizontal
3	4464.1627	37.59	14.37	51.96	74.00	-22.04	Horizontal
4	5116.2907	36.19	16.55	52.74	74.00	-21.26	Horizontal
5	5531.2813	35.63	17.37	53.00	74.00	-21.00	Horizontal
6	6025.1139	35.58	17.64	53.22	74.00	-20.78	Horizontal

- Remark: 1. Measurement = Reading Level + Correct Factor.  
2. If Peak Result complies with AV limit, AV Result is deemed to comply with AV limit.  
3. Test setup: RBW: 1 MHz, VBW: 3 MHz, Sweep time: auto.  
4. Peak: Peak detector.  
5. AVG: VBW refer to section 6.2.  
6. For below 6.5GHz part, filter losses were only considered in the spurious frequency bands and the authorized band were not corrected for Band Reject Filter losses.  
The proper operation of the transmitter prior to adding the filter to the measurement chain.  
7. Only the worst case emission was recorded, if it complies with the limit, the other emissions deemed to comply with the limit.



Test Mode	Channel	Polarization	Verdict
11ax HE40	5310	Vertical	PASS

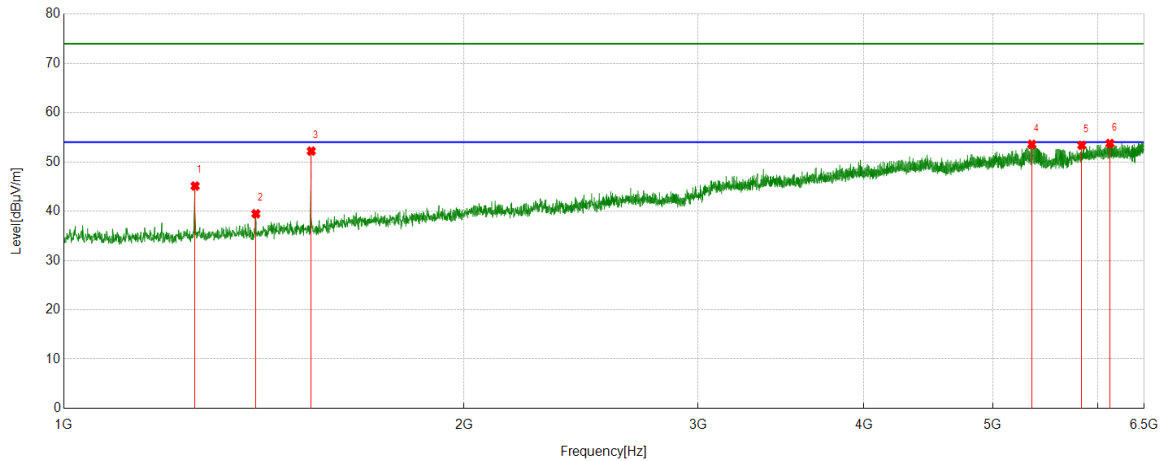


#### PK Result:

No.	Frequency [MHz]	Reading Level [dBuV]	Correct Factor [dB/m]	Result [dBuV/m]	Limit [dBuV/m]	Margin [dB]	Remark
1	1255.4728	47.23	-1.16	46.07	74.00	-27.93	Vertical
2	1394.8216	43.77	-0.98	42.79	74.00	-31.21	Vertical
3	1535.3928	52.55	-0.58	51.97	74.00	-22.03	Vertical
4	5131.5702	36.21	16.47	52.68	74.00	-21.32	Vertical
5	5401.1001	35.91	16.97	52.88	74.00	-21.12	Vertical
6	6195.6328	35.60	18.29	53.89	74.00	-20.11	Vertical

- Remark: 1. Measurement = Reading Level + Correct Factor.  
2. If Peak Result complies with AV limit, AV Result is deemed to comply with AV limit.  
3. Test setup: RBW: 1 MHz, VBW: 3 MHz, Sweep time: auto.  
4. Peak: Peak detector.  
5. AVG: VBW refer to section 6.2.  
6. For below 6.5GHz part, filter losses were only considered in the spurious frequency bands and the authorized band were not corrected for Band Reject Filter losses.  
The proper operation of the transmitter prior to adding the filter to the measurement chain.  
7. Only the worst case emission was recorded, if it complies with the limit, the other emissions deemed to comply with the limit.

Test Mode	Channel	Polarization	Verdict
11ax HE40	5510	Horizontal	PASS

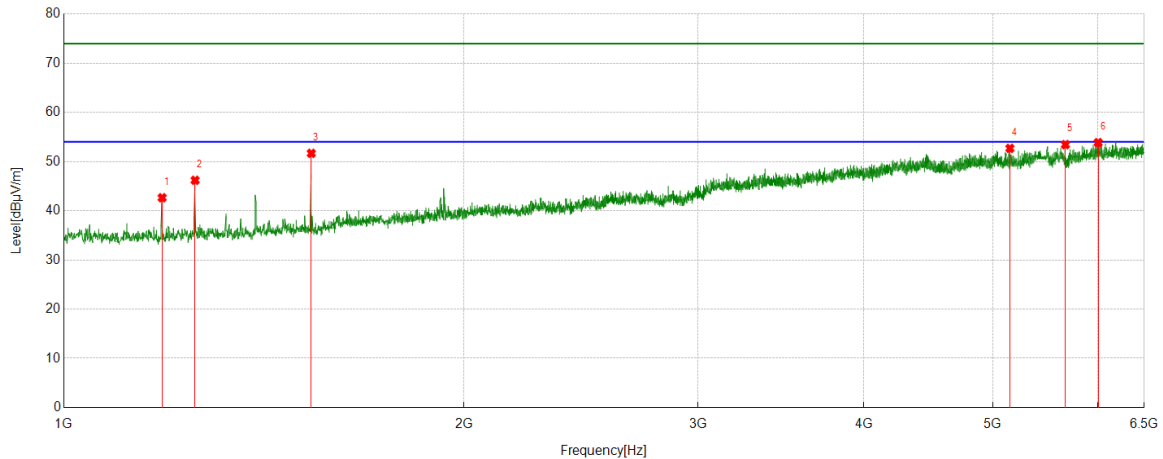


#### PK Result:

No.	Frequency [MHz]	Reading Level [dBuV]	Correct Factor [dB/m]	Result [dBuV/m]	Limit [dBuV/m]	Margin [dB]	Remark
1	1255.4728	46.59	-1.48	45.11	74.00	-28.89	Horizontal
2	1394.8216	40.62	-1.14	39.48	74.00	-34.52	Horizontal
3	1535.3928	52.92	-0.72	52.20	74.00	-21.80	Horizontal
4	5349.7611	37.21	16.36	53.57	74.00	-20.43	Horizontal
5	5833.8149	35.99	17.38	53.37	74.00	-20.63	Horizontal
6	6125.3473	35.50	18.24	53.74	74.00	-20.26	Horizontal

- Remark: 1. Measurement = Reading Level + Correct Factor.  
2. If Peak Result complies with AV limit, AV Result is deemed to comply with AV limit.  
3. Test setup: RBW: 1 MHz, VBW: 3 MHz, Sweep time: auto.  
4. Peak: Peak detector.  
5. AVG: VBW refer to section 6.2.  
6. For below 6.5GHz part, filter losses were only considered in the spurious frequency bands and the authorized band were not corrected for Band Reject Filter losses.  
The proper operation of the transmitter prior to adding the filter to the measurement chain.  
7. Only the worst case emission was recorded, if it complies with the limit, the other emissions deemed to comply with the limit.

Test Mode	Channel	Polarization	Verdict
11ax HE40	5510	Vertical	PASS

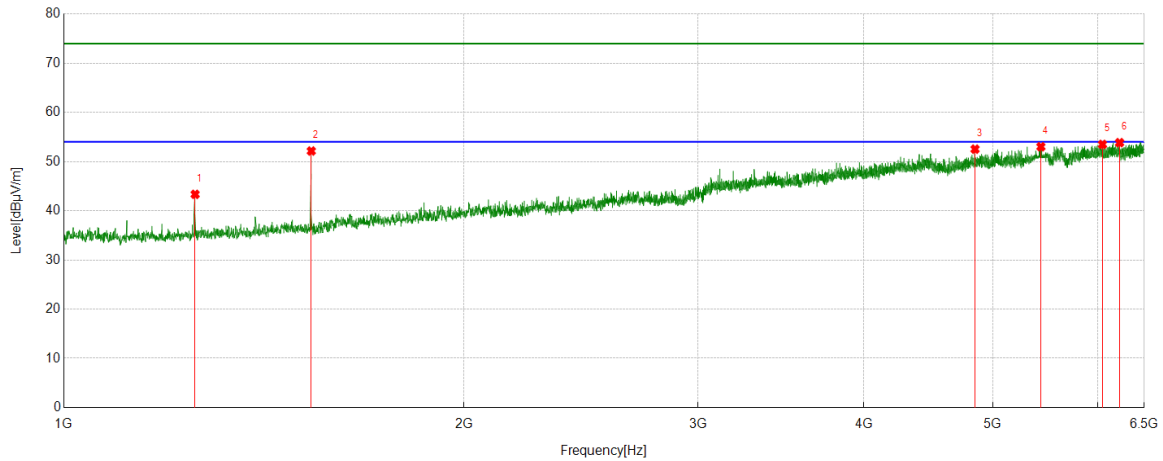


#### PK Result:

No.	Frequency [MHz]	Reading Level [dBuV]	Correct Factor [dB/m]	Result [dBuV/m]	Limit [dBuV/m]	Margin [dB]	Remark
1	1185.7984	44.58	-1.93	42.65	74.00	-31.35	Vertical
2	1255.4728	47.68	-1.48	46.20	74.00	-27.80	Vertical
3	1535.3928	52.40	-0.72	51.68	74.00	-22.32	Vertical
4	5150.5167	37.53	15.16	52.69	74.00	-21.31	Vertical
5	5670.6301	35.99	17.46	53.45	74.00	-20.55	Vertical
6	6001.2779	36.02	17.84	53.86	74.00	-20.14	Vertical

- Remark: 1. Measurement = Reading Level + Correct Factor.  
2. If Peak Result complies with AV limit, AV Result is deemed to comply with AV limit.  
3. Test setup: RBW: 1 MHz, VBW: 3 MHz, Sweep time: auto.  
4. Peak: Peak detector.  
5. AVG: VBW refer to section 6.2.  
6. For below 6.5GHz part, filter losses were only considered in the spurious frequency bands and the authorized band were not corrected for Band Reject Filter losses.  
The proper operation of the transmitter prior to adding the filter to the measurement chain.  
7. Only the worst case emission was recorded, if it complies with the limit, the other emissions deemed to comply with the limit.

Test Mode	Channel	Polarization	Verdict
11ax HE40	5550	Horizontal	PASS

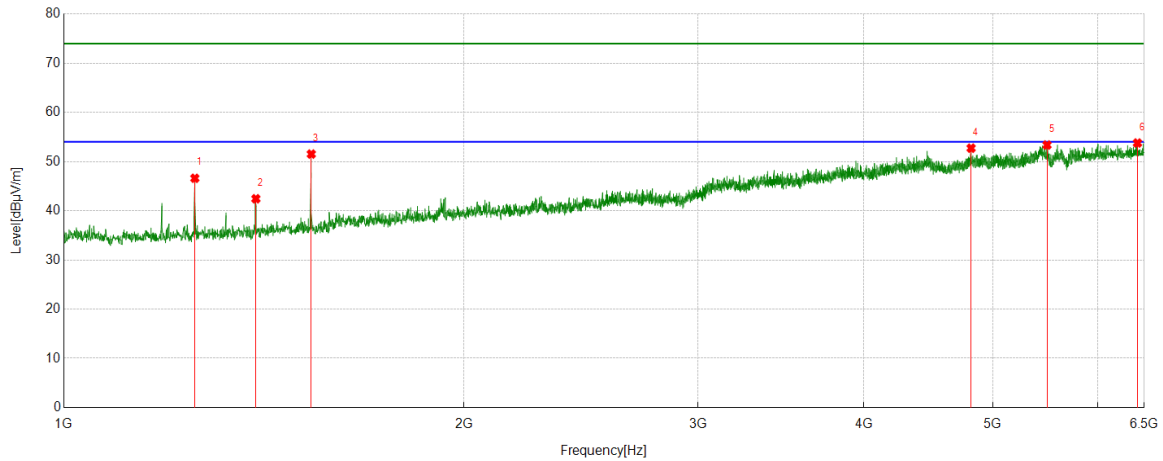


#### PK Result:

No.	Frequency [MHz]	Reading Level [dBuV]	Correct Factor [dB/m]	Result [dBuV/m]	Limit [dBuV/m]	Margin [dB]	Remark
1	1255.4728	44.82	-1.48	43.34	74.00	-30.66	Horizontal
2	1535.3928	52.87	-0.72	52.15	74.00	-21.85	Horizontal
3	4848.5943	37.20	15.33	52.53	74.00	-21.47	Horizontal
4	5434.7150	35.12	17.90	53.02	74.00	-20.98	Horizontal
5	6046.5052	35.73	17.76	53.49	74.00	-20.51	Horizontal
6	6228.6365	35.40	18.45	53.85	74.00	-20.15	Horizontal

- Remark: 1. Measurement = Reading Level + Correct Factor.  
2. If Peak Result complies with AV limit, AV Result is deemed to comply with AV limit.  
3. Test setup: RBW: 1 MHz, VBW: 3 MHz, Sweep time: auto.  
4. Peak: Peak detector.  
5. AVG: VBW refer to section 6.2.  
6. For below 6.5GHz part, filter losses were only considered in the spurious frequency bands and the authorized band were not corrected for Band Reject Filter losses.  
The proper operation of the transmitter prior to adding the filter to the measurement chain.  
7. Only the worst case emission was recorded, if it complies with the limit, the other emissions deemed to comply with the limit.

Test Mode	Channel	Polarization	Verdict
11ax HE40	5550	Vertical	PASS

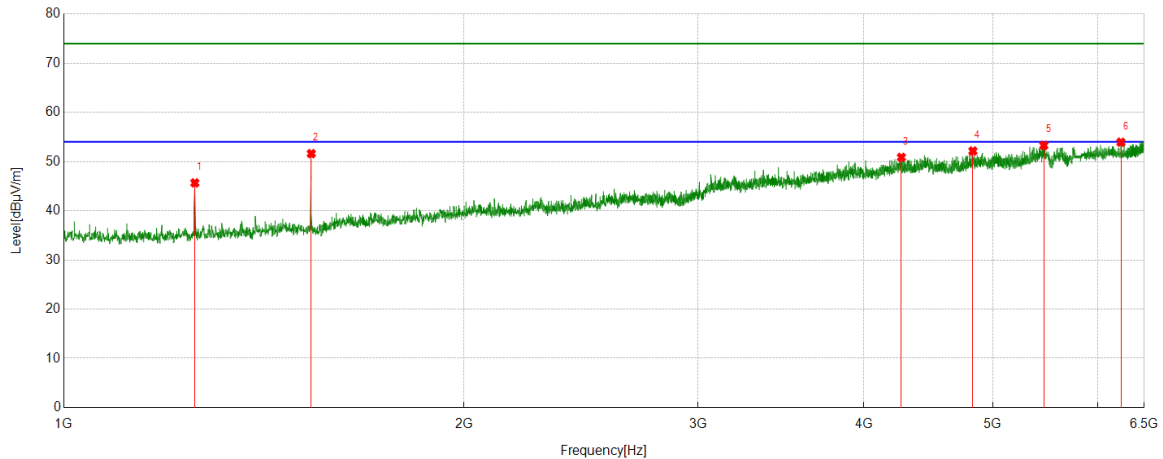


#### PK Result:

No.	Frequency [MHz]	Reading Level [dBuV]	Correct Factor [dB/m]	Result [dBuV/m]	Limit [dBuV/m]	Margin [dB]	Remark
1	1254.8617	48.08	-1.47	46.61	74.00	-27.39	Vertical
2	1394.8216	43.58	-1.14	42.44	74.00	-31.56	Vertical
3	1535.3928	52.25	-0.72	51.53	74.00	-22.47	Vertical
4	4815.5906	37.38	15.35	52.73	74.00	-21.27	Vertical
5	5492.7770	35.54	17.83	53.37	74.00	-20.63	Vertical
6	6424.2138	34.68	19.10	53.78	74.00	-20.22	Vertical

- Remark: 1. Measurement = Reading Level + Correct Factor.  
2. If Peak Result complies with AV limit, AV Result is deemed to comply with AV limit.  
3. Test setup: RBW: 1 MHz, VBW: 3 MHz, Sweep time: auto.  
4. Peak: Peak detector.  
5. AVG: VBW refer to section 6.2.  
6. For below 6.5GHz part, filter losses were only considered in the spurious frequency bands and the authorized band were not corrected for Band Reject Filter losses.  
The proper operation of the transmitter prior to adding the filter to the measurement chain.  
7. Only the worst case emission was recorded, if it complies with the limit, the other emissions deemed to comply with the limit.

Test Mode	Channel	Polarization	Verdict
11ax HE40	5670	Horizontal	PASS

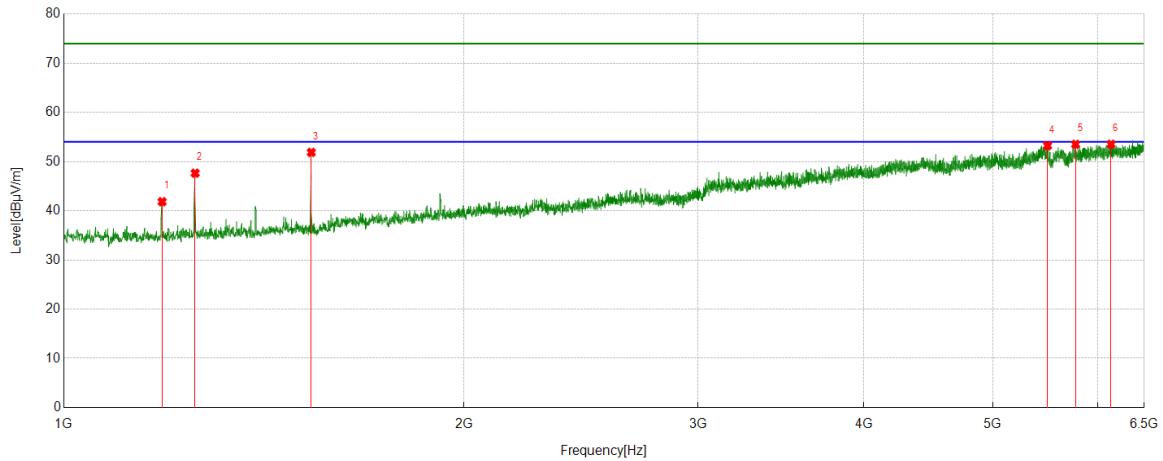


#### PK Result:

No.	Frequency [MHz]	Reading Level [dBuV]	Correct Factor [dB/m]	Result [dBuV/m]	Limit [dBuV/m]	Margin [dB]	Remark
1	1254.8617	47.14	-1.47	45.67	74.00	-28.33	Horizontal
2	1535.3928	52.34	-0.72	51.62	74.00	-22.38	Horizontal
3	4267.9742	36.48	14.38	50.86	74.00	-23.14	Horizontal
4	4830.8701	36.73	15.42	52.15	74.00	-21.85	Horizontal
5	5462.2180	35.42	17.87	53.29	74.00	-20.71	Horizontal
6	6242.6936	35.46	18.47	53.93	74.00	-20.07	Horizontal

- Remark: 1. Measurement = Reading Level + Correct Factor.  
2. If Peak Result complies with AV limit, AV Result is deemed to comply with AV limit.  
3. Test setup: RBW: 1 MHz, VBW: 3 MHz, Sweep time: auto.  
4. Peak: Peak detector.  
5. AVG: VBW refer to section 6.2.  
6. For below 6.5GHz part, filter losses were only considered in the spurious frequency bands and the authorized band were not corrected for Band Reject Filter losses.  
The proper operation of the transmitter prior to adding the filter to the measurement chain.  
7. Only the worst case emission was recorded, if it complies with the limit, the other emissions deemed to comply with the limit.

Test Mode	Channel	Polarization	Verdict
11ax HE40	5670	Vertical	PASS

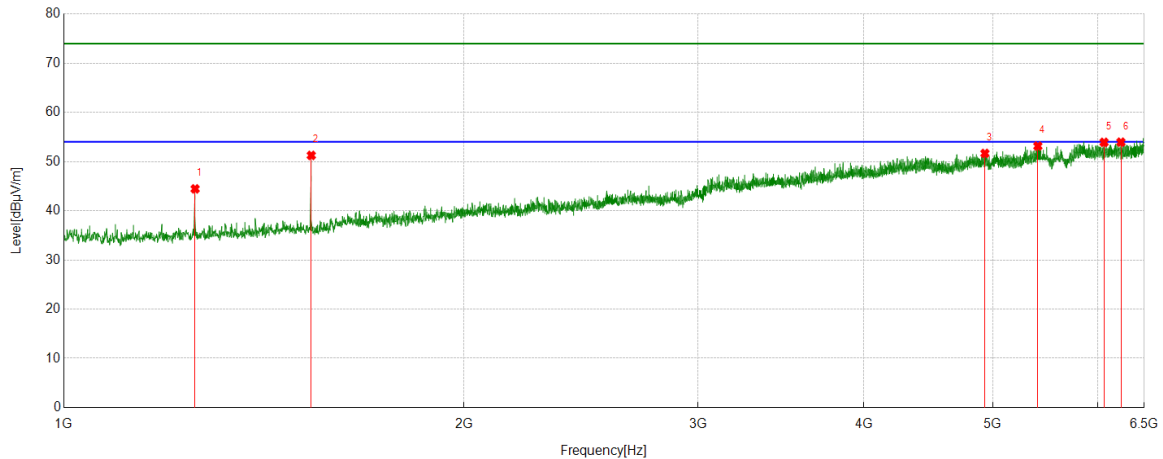


#### PK Result:

No.	Frequency [MHz]	Reading Level [dBuV]	Correct Factor [dB/m]	Result [dBuV/m]	Limit [dBuV/m]	Margin [dB]	Remark
1	1185.7984	43.77	-1.93	41.84	74.00	-32.16	Vertical
2	1255.4728	49.12	-1.48	47.64	74.00	-26.36	Vertical
3	1535.3928	52.59	-0.72	51.87	74.00	-22.13	Vertical
4	5497.6664	35.42	17.82	53.24	74.00	-20.76	Vertical
5	5771.4746	36.45	17.05	53.50	74.00	-20.50	Vertical
6	6136.9597	35.32	18.20	53.52	74.00	-20.48	Vertical

- Remark: 1. Measurement = Reading Level + Correct Factor.  
2. If Peak Result complies with AV limit, AV Result is deemed to comply with AV limit.  
3. Test setup: RBW: 1 MHz, VBW: 3 MHz, Sweep time: auto.  
4. Peak: Peak detector.  
5. AVG: VBW refer to section 6.2.  
6. For below 6.5GHz part, filter losses were only considered in the spurious frequency bands and the authorized band were not corrected for Band Reject Filter losses.  
The proper operation of the transmitter prior to adding the filter to the measurement chain.  
7. Only the worst case emission was recorded, if it complies with the limit, the other emissions deemed to comply with the limit.

Test Mode	Channel	Polarization	Verdict
11ax HE40	5710	Horizontal	PASS



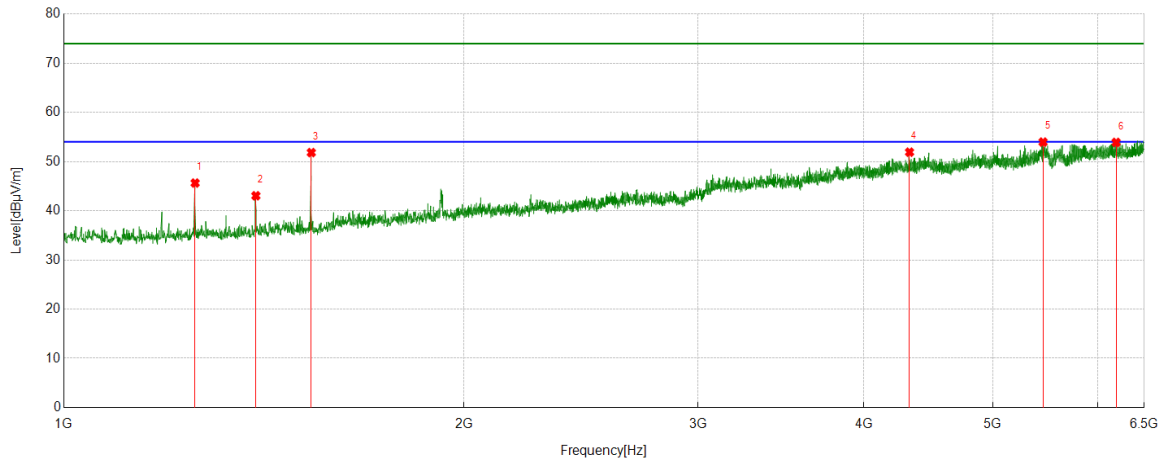
#### PK Result:

No.	Frequency [MHz]	Reading Level [dBuV]	Correct Factor [dB/m]	Result [dBuV/m]	Limit [dBuV/m]	Margin [dB]	Remark
1	1255.4728	45.93	-1.48	44.45	74.00	-29.55	Horizontal
2	1535.3928	51.98	-0.72	51.26	74.00	-22.74	Horizontal
3	4932.3258	36.52	15.15	51.67	74.00	-22.33	Horizontal
4	5405.9896	36.27	16.88	53.15	74.00	-20.85	Horizontal
5	6063.0070	35.98	17.94	53.92	74.00	-20.08	Horizontal
6	6242.6936	35.48	18.47	53.95	74.00	-20.05	Horizontal

- Remark: 1. Measurement = Reading Level + Correct Factor.  
2. If Peak Result complies with AV limit, AV Result is deemed to comply with AV limit.  
3. Test setup: RBW: 1 MHz, VBW: 3 MHz, Sweep time: auto.  
4. Peak: Peak detector.  
5. AVG: VBW refer to section 6.2.  
6. For below 6.5GHz part, filter losses were only considered in the spurious frequency bands and the authorized band were not corrected for Band Reject Filter losses.  
The proper operation of the transmitter prior to adding the filter to the measurement chain.  
7. Only the worst case emission was recorded, if it complies with the limit, the other emissions deemed to comply with the limit.



Test Mode	Channel	Polarization	Verdict
11ax HE40	5710	Vertical	PASS

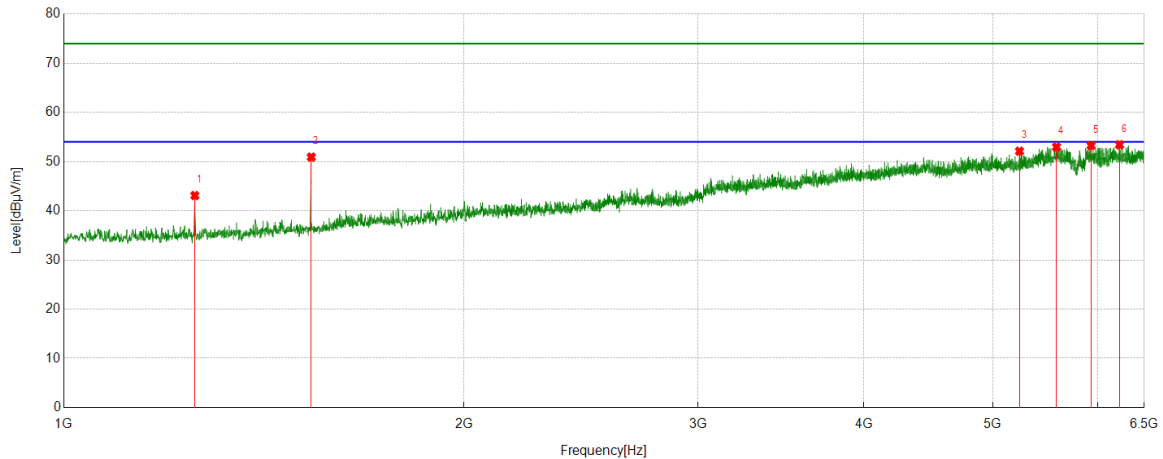


#### PK Result:

No.	Frequency [MHz]	Reading Level [dBuV]	Correct Factor [dB/m]	Result [dBuV/m]	Limit [dBuV/m]	Margin [dB]	Remark
1	1255.4728	47.12	-1.48	45.64	74.00	-28.36	Vertical
2	1394.8216	44.19	-1.14	43.05	74.00	-30.95	Vertical
3	1535.3928	52.55	-0.72	51.83	74.00	-22.17	Vertical
4	4328.4809	38.29	13.62	51.91	74.00	-22.09	Vertical
5	5454.8839	36.09	17.88	53.97	74.00	-20.03	Vertical
6	6190.7434	35.44	18.46	53.90	74.00	-20.10	Vertical

- Remark: 1. Measurement = Reading Level + Correct Factor.  
2. If Peak Result complies with AV limit, AV Result is deemed to comply with AV limit.  
3. Test setup: RBW: 1 MHz, VBW: 3 MHz, Sweep time: auto.  
4. Peak: Peak detector.  
5. AVG: VBW refer to section 6.2.  
6. For below 6.5GHz part, filter losses were only considered in the spurious frequency bands and the authorized band were not corrected for Band Reject Filter losses.  
The proper operation of the transmitter prior to adding the filter to the measurement chain.  
7. Only the worst case emission was recorded, if it complies with the limit, the other emissions deemed to comply with the limit.

Test Mode	Channel	Polarization	Verdict
11ax HE40	5755	Horizontal	PASS

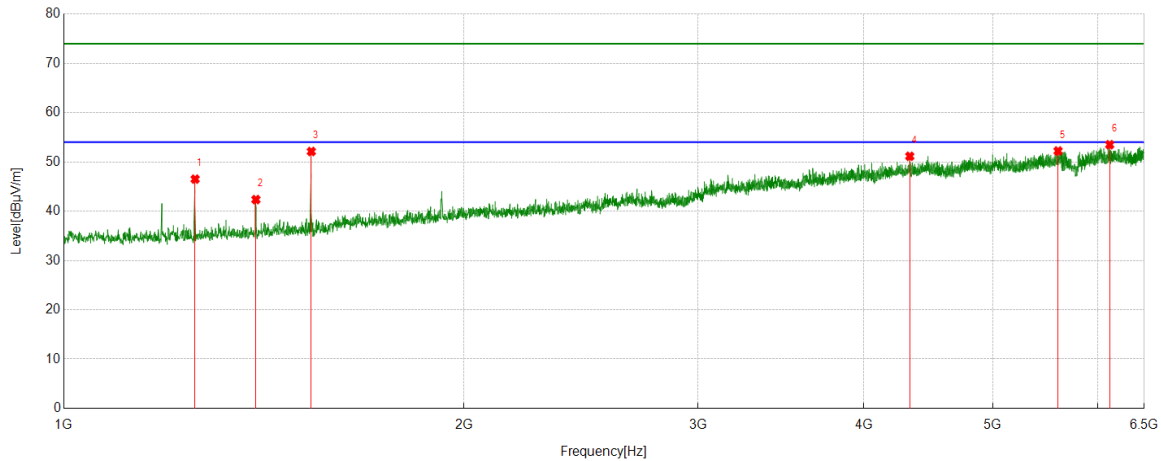


#### PK Result:

No.	Frequency [MHz]	Reading Level [dBuV]	Correct Factor [dB/m]	Result [dBuV/m]	Limit [dBuV/m]	Margin [dB]	Remark
1	1254.8617	44.70	-1.60	43.10	74.00	-30.90	Horizontal
2	1535.3928	51.29	-0.38	50.91	74.00	-23.09	Horizontal
3	5236.6930	37.41	14.70	52.11	74.00	-21.89	Horizontal
4	5583.8426	36.39	16.57	52.96	74.00	-21.04	Horizontal
5	5928.5476	36.00	17.26	53.26	74.00	-20.74	Horizontal
6	6228.0253	35.31	18.11	53.42	74.00	-20.58	Horizontal

- Remark: 1. Measurement = Reading Level + Correct Factor.  
2. If Peak Result complies with AV limit, AV Result is deemed to comply with AV limit.  
3. Test setup: RBW: 1 MHz, VBW: 3 MHz, Sweep time: auto.  
4. Peak: Peak detector.  
5. AVG: VBW refer to section 6.2.  
6. For below 6.5GHz part, filter losses were only considered in the spurious frequency bands and the authorized band were not corrected for Band Reject Filter losses.  
The proper operation of the transmitter prior to adding the filter to the measurement chain.  
7. Only the worst case emission was recorded, if it complies with the limit, the other emissions deemed to comply with the limit.

Test Mode	Channel	Polarization	Verdict
11ax HE40	5755	Vertical	PASS

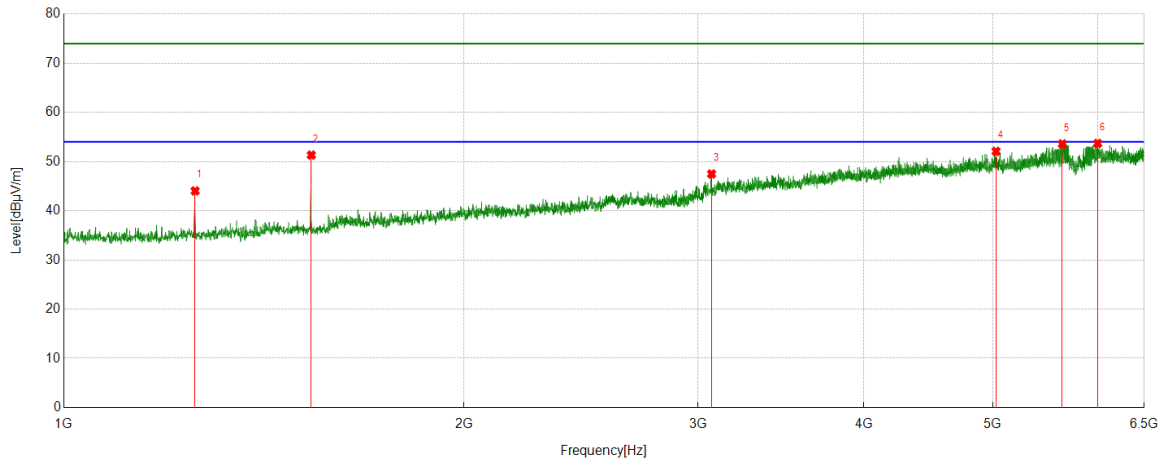


#### PK Result:

No.	Frequency [MHz]	Reading Level [dBuV]	Correct Factor [dB/m]	Result [dBuV/m]	Limit [dBuV/m]	Margin [dB]	Remark
1	1255.4728	48.10	-1.59	46.51	74.00	-27.49	Vertical
2	1394.8216	43.51	-1.15	42.36	74.00	-31.64	Vertical
3	1535.3928	52.50	-0.38	52.12	74.00	-21.88	Vertical
4	4330.3145	37.73	13.42	51.15	74.00	-22.85	Vertical
5	5598.5109	35.72	16.50	52.22	74.00	-21.78	Vertical
6	6122.9025	35.85	17.65	53.50	74.00	-20.50	Vertical

- Remark: 1. Measurement = Reading Level + Correct Factor.  
2. If Peak Result complies with AV limit, AV Result is deemed to comply with AV limit.  
3. Test setup: RBW: 1 MHz, VBW: 3 MHz, Sweep time: auto.  
4. Peak: Peak detector.  
5. AVG: VBW refer to section 6.2.  
6. For below 6.5GHz part, filter losses were only considered in the spurious frequency bands and the authorized band were not corrected for Band Reject Filter losses.  
The proper operation of the transmitter prior to adding the filter to the measurement chain.  
7. Only the worst case emission was recorded, if it complies with the limit, the other emissions deemed to comply with the limit.

Test Mode	Channel	Polarization	Verdict
11ax HE40	5795	Horizontal	PASS

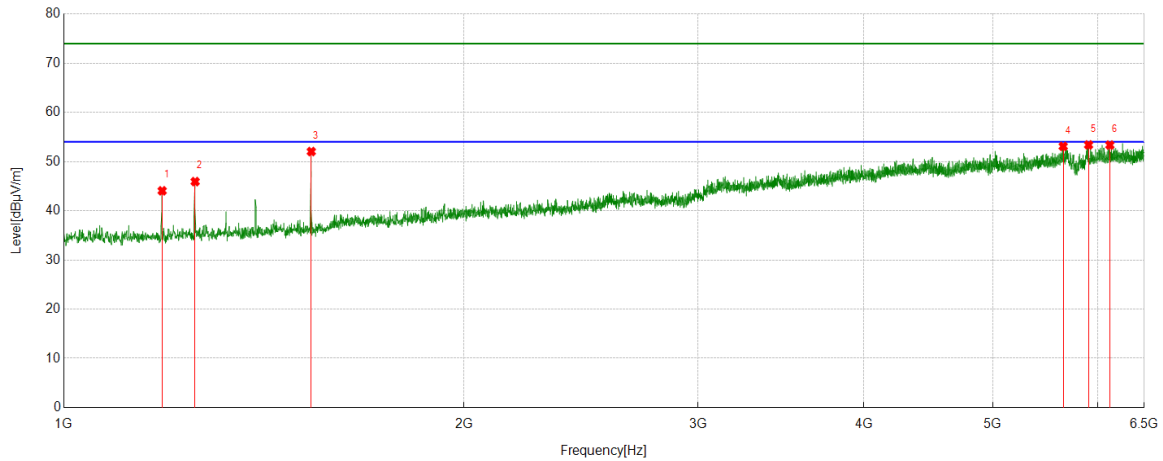


#### PK Result:

No.	Frequency [MHz]	Reading Level [dBuV]	Correct Factor [dB/m]	Result [dBuV/m]	Limit [dBuV/m]	Margin [dB]	Remark
1	1255.4728	45.63	-1.59	44.04	74.00	-29.96	Horizontal
2	1535.3928	51.71	-0.38	51.33	74.00	-22.67	Horizontal
3	3071.8969	38.68	8.81	47.49	74.00	-26.51	Horizontal
4	5028.2809	36.88	15.21	52.09	74.00	-21.91	Horizontal
5	5640.0711	36.97	16.62	53.59	74.00	-20.41	Horizontal
6	5996.3885	36.35	17.34	53.69	74.00	-20.31	Horizontal

- Remark: 1. Measurement = Reading Level + Correct Factor.  
2. If Peak Result complies with AV limit, AV Result is deemed to comply with AV limit.  
3. Test setup: RBW: 1 MHz, VBW: 3 MHz, Sweep time: auto.  
4. Peak: Peak detector.  
5. AVG: VBW refer to section 6.2.  
6. For below 6.5GHz part, filter losses were only considered in the spurious frequency bands and the authorized band were not corrected for Band Reject Filter losses.  
The proper operation of the transmitter prior to adding the filter to the measurement chain.  
7. Only the worst case emission was recorded, if it complies with the limit, the other emissions deemed to comply with the limit.

Test Mode	Channel	Polarization	Verdict
11ax HE40	5795	Vertical	PASS



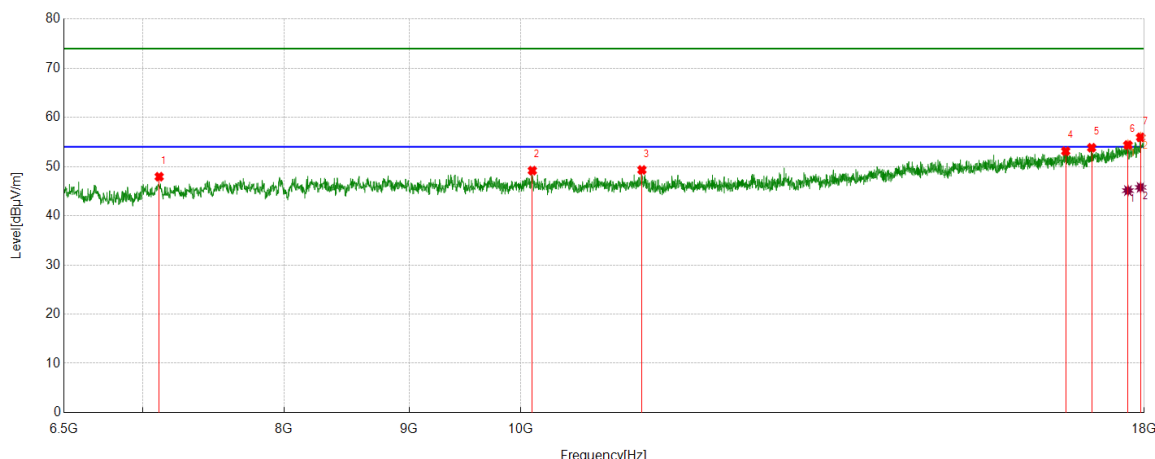
#### PK Result:

No.	Frequency [MHz]	Reading Level [dBuV]	Correct Factor [dB/m]	Result [dBuV/m]	Limit [dBuV/m]	Margin [dB]	Remark
1	1185.7984	45.95	-1.89	44.06	74.00	-29.94	Vertical
2	1255.4728	47.52	-1.59	45.93	74.00	-28.07	Vertical
3	1535.3928	52.42	-0.38	52.04	74.00	-21.96	Vertical
4	5648.6276	36.23	16.87	53.10	74.00	-20.90	Vertical
5	5902.8781	36.21	17.18	53.39	74.00	-20.61	Vertical
6	6124.1249	35.69	17.67	53.36	74.00	-20.64	Vertical

- Remark: 1. Measurement = Reading Level + Correct Factor.  
2. If Peak Result complies with AV limit, AV Result is deemed to comply with AV limit.  
3. Test setup: RBW: 1 MHz, VBW: 3 MHz, Sweep time: auto.  
4. Peak: Peak detector.  
5. AVG: VBW refer to section 6.2.  
6. For below 6.5GHz part, filter losses were only considered in the spurious frequency bands and the authorized band were not corrected for Band Reject Filter losses.  
The proper operation of the transmitter prior to adding the filter to the measurement chain.  
7. Only the worst case emission was recorded, if it complies with the limit, the other emissions deemed to comply with the limit.

## PART 2: 6.5GHz~18GHz

Test Mode	Channel	Polarization	Verdict
11a	5180	Horizontal	PASS



### PK Result:

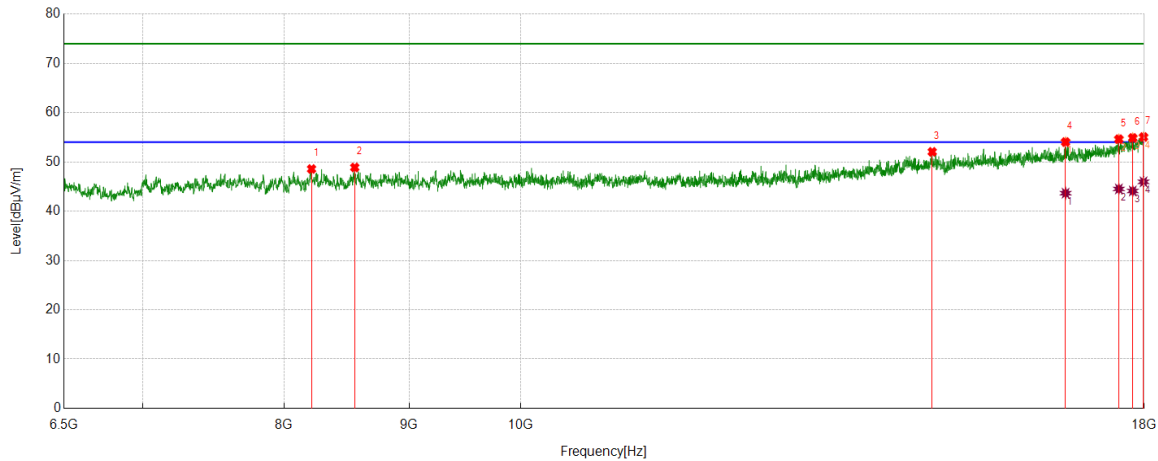
No.	Frequency [MHz]	Reading Level [dBuV]	Correct Factor [dB/m]	Result [dBuV/m]	Limit [dBuV/m]	Margin [dB]	Remark
1	7111.5186	44.04	3.90	47.94	74.00	-26.06	Horizontal
2	10109.6849	42.51	6.67	49.18	74.00	-24.82	Horizontal
3	11210.0350	41.93	7.39	49.32	74.00	-24.68	Horizontal
4	16715.6193	37.06	16.07	53.13	74.00	-20.87	Horizontal
5	17129.6883	37.21	16.63	53.84	74.00	-20.16	Horizontal
6	17725.8710	35.88	18.51	54.39	74.00	-19.61	Horizontal
7	17938.6564	36.51	19.44	55.95	74.00	-18.05	Horizontal

### AV Result:

No.	Frequency [MHz]	Reading Level [dBuV]	Correct Factor [dB/m]	Result [dBuV/m]	Limit [dBuV/m]	Margin [dB]	Remark
1	17725.8710	26.61	18.51	45.12	54.00	-8.88	Horizontal
2	17938.6564	26.33	19.44	45.77	54.00	-8.23	Horizontal

- Remark: 1. Measurement = Reading Level + Correct Factor.  
2. If Peak Result complies with AV limit, AV Result is deemed to comply with AV limit.  
3. Test setup: RBW: 1 MHz, VBW: 3 MHz, Sweep time: auto.  
4. Peak: Peak detector.  
5. AVG: VBW refer to section 6.2.  
6. For above 6.5GHz part, filter losses were only considered in the spurious frequency bands and the authorized band were not corrected for HPF losses. The proper operation of the transmitter prior to adding the filter to the measurement chain.  
7. Only the worst case emission was recorded, if it complies with the limit, the other emissions deemed to comply with the limit.

Test Mode	Channel	Polarization	Verdict
11a	5180	Vertical	PASS



#### PK Result:

No.	Frequency [MHz]	Reading Level [dBuV]	Correct Factor [dB/m]	Result [dBuV/m]	Limit [dBuV/m]	Margin [dB]	Remark
1	8209.9517	42.70	5.87	48.57	74.00	-25.43	Vertical
2	8551.1752	42.43	6.45	48.88	74.00	-25.12	Vertical
3	14739.2065	39.16	12.89	52.05	74.00	-21.95	Vertical
4	16713.7023	38.09	15.95	54.04	74.00	-19.96	Vertical
5	17574.4291	36.70	17.92	54.62	74.00	-19.38	Vertical
6	17806.3844	35.98	18.90	54.88	74.00	-19.12	Vertical
7	17988.4981	35.25	19.81	55.06	74.00	-18.94	Vertical

#### AV Result:

No.	Frequency [MHz]	Reading Level [dBuV]	Correct Factor [dB/m]	Result [dBuV/m]	Limit [dBuV/m]	Margin [dB]	Remark
1	16713.7023	27.71	15.95	43.66	54.00	-10.34	Vertical
2	17574.4291	26.60	17.92	44.52	54.00	-9.48	Vertical
3	17806.3844	25.21	18.90	44.11	54.00	-9.89	Vertical
4	17988.4981	26.15	19.81	45.96	54.00	-8.04	Vertical

Remark: 1. Measurement = Reading Level + Correct Factor.

2. If Peak Result complies with AV limit, AV Result is deemed to comply with AV limit.

3. Test setup: RBW: 1 MHz, VBW: 3 MHz, Sweep time: auto.

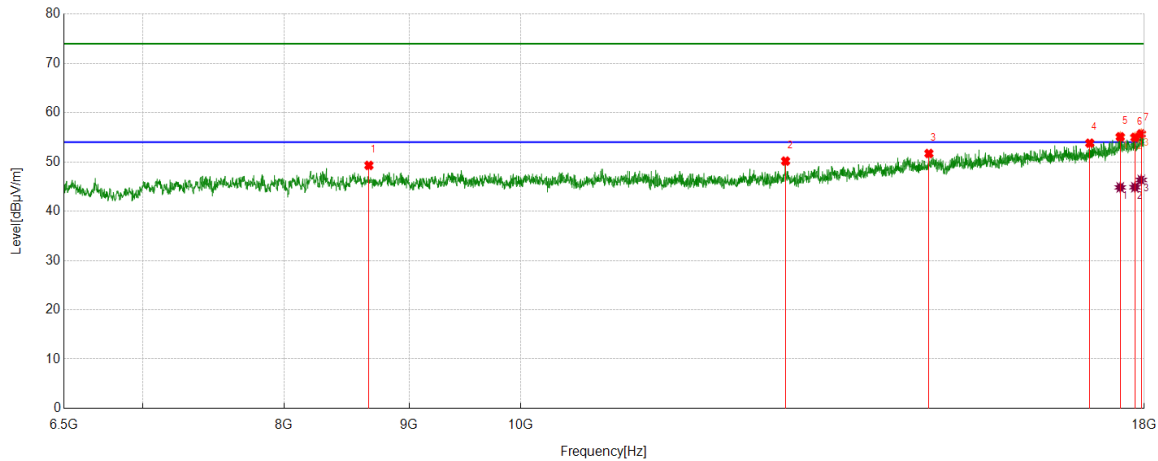
4. Peak: Peak detector.

5. AVG: VBW refer to section 6.2.

6. For above 6.5GHz part, filter losses were only considered in the spurious frequency bands and the authorized band were not corrected for HPF losses. The proper operation of the transmitter prior to adding the filter to the measurement chain.

7. Only the worst case emission was recorded, if it complies with the limit, the other emissions deemed to comply with the limit.

Test Mode	Channel	Polarization	Verdict
11a	5200	Horizontal	PASS



#### PK Result:

No.	Frequency [MHz]	Reading Level [dBuV]	Correct Factor [dB/m]	Result [dBuV/m]	Limit [dBuV/m]	Margin [dB]	Remark
1	8666.1944	43.10	6.19	49.29	74.00	-24.71	Horizontal
2	12835.6393	41.08	9.09	50.17	74.00	-23.83	Horizontal
3	14693.1989	38.90	12.81	51.71	74.00	-22.29	Horizontal
4	17099.0165	37.29	16.51	53.80	74.00	-20.20	Horizontal
5	17597.4329	37.07	18.03	55.10	74.00	-18.90	Horizontal
6	17842.8071	35.88	19.10	54.98	74.00	-19.02	Horizontal
7	17950.1584	36.20	19.49	55.69	74.00	-18.31	Horizontal

#### AV Result:

No.	Frequency [MHz]	Reading Level [dBuV]	Correct Factor [dB/m]	Result [dBuV/m]	Limit [dBuV/m]	Margin [dB]	Remark
1	17597.4329	26.80	18.03	44.83	54.00	-9.17	Horizontal
2	17842.8071	25.77	19.10	44.87	54.00	-9.13	Horizontal
3	17950.1584	26.85	19.49	46.34	54.00	-7.66	Horizontal

Remark: 1. Measurement = Reading Level + Correct Factor.

2. If Peak Result complies with AV limit, AV Result is deemed to comply with AV limit.

3. Test setup: RBW: 1 MHz, VBW: 3 MHz, Sweep time: auto.

4. Peak: Peak detector.

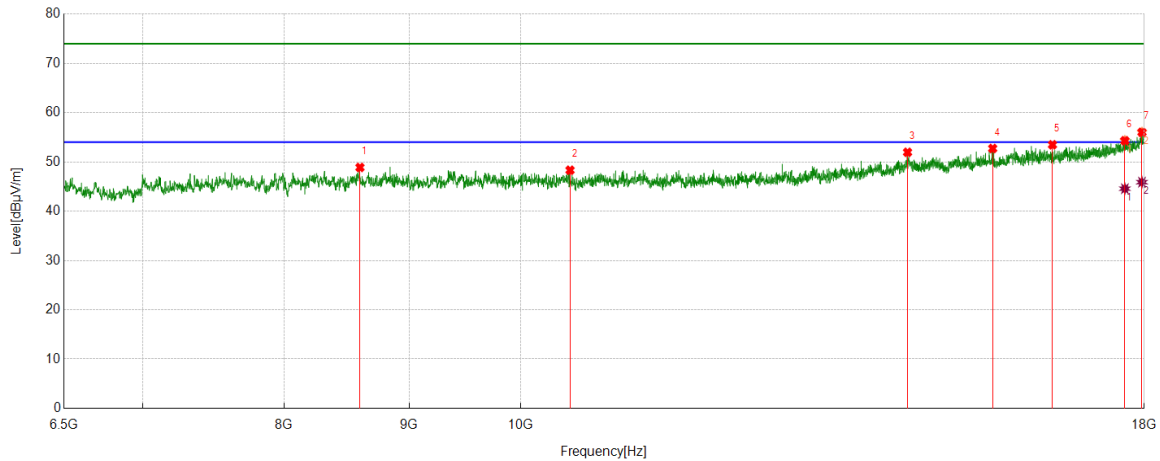
5. AVG: VBW refer to section 6.2.

6. For above 6.5GHz part, filter losses were only considered in the spurious frequency bands and the authorized band were not corrected for HPF losses. The proper operation of the transmitter prior to adding the filter to the measurement chain.

7. Only the worst case emission was recorded, if it complies with the limit, the other emissions deemed to comply with the limit.



Test Mode	Channel	Polarization	Verdict
11a	5200	Vertical	PASS



#### PK Result:

No.	Frequency [MHz]	Reading Level [dBuV]	Correct Factor [dB/m]	Result [dBuV/m]	Limit [dBuV/m]	Margin [dB]	Remark
1	8593.3489	42.82	6.06	48.88	74.00	-25.12	Vertical
2	10475.8293	41.59	6.73	48.32	74.00	-25.68	Vertical
3	14399.9000	39.23	12.73	51.96	74.00	-22.04	Vertical
4	15603.7673	39.08	13.65	52.73	74.00	-21.27	Vertical
5	16508.5848	37.55	15.93	53.48	74.00	-20.52	Vertical
6	17674.1124	36.23	18.08	54.31	74.00	-19.69	Vertical
7	17961.6603	36.39	19.63	56.02	74.00	-17.98	Vertical

#### AV Result:

No.	Frequency [MHz]	Reading Level [dBuV]	Correct Factor [dB/m]	Result [dBuV/m]	Limit [dBuV/m]	Margin [dB]	Remark
1	17674.1124	26.49	18.08	44.57	54.00	-9.43	Vertical
2	17961.6603	26.26	19.63	45.89	54.00	-8.11	Vertical

Remark: 1. Measurement = Reading Level + Correct Factor.

2. If Peak Result complies with AV limit, AV Result is deemed to comply with AV limit.

3. Test setup: RBW: 1 MHz, VBW: 3 MHz, Sweep time: auto.

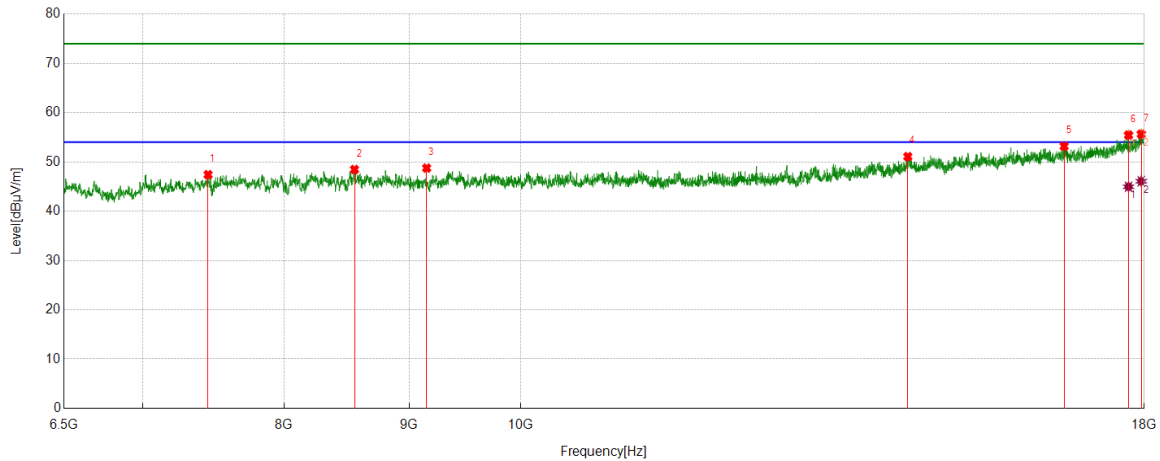
4. Peak: Peak detector.

5. AVG: VBW refer to section 6.2.

6. For above 6.5GHz part, filter losses were only considered in the spurious frequency bands and the authorized band were not corrected for HPF losses. The proper operation of the transmitter prior to adding the filter to the measurement chain.

7. Only the worst case emission was recorded, if it complies with the limit, the other emissions deemed to comply with the limit.

Test Mode	Channel	Polarization	Verdict
11a	5240	Horizontal	PASS



#### PK Result:

No.	Frequency [MHz]	Reading Level [dBuV]	Correct Factor [dB/m]	Result [dBuV/m]	Limit [dBuV/m]	Margin [dB]	Remark
1	7446.9912	43.29	4.12	47.41	74.00	-26.59	Horizontal
2	8549.2582	41.97	6.49	48.46	74.00	-25.54	Horizontal
3	9151.1919	42.92	5.83	48.75	74.00	-25.25	Horizontal
4	14403.7340	38.29	12.79	51.08	74.00	-22.92	Horizontal
5	16690.6984	37.45	15.74	53.19	74.00	-20.81	Horizontal
6	17735.4559	36.93	18.53	55.46	74.00	-18.54	Horizontal
7	17950.1584	36.15	19.49	55.64	74.00	-18.36	Horizontal

#### AV Result:

No.	Frequency [MHz]	Reading Level [dBuV]	Correct Factor [dB/m]	Result [dBuV/m]	Limit [dBuV/m]	Margin [dB]	Remark
1	17735.4559	26.43	18.53	44.96	54.00	-9.04	Horizontal
2	17950.1584	26.59	19.49	46.08	54.00	-7.92	Horizontal

Remark: 1. Measurement = Reading Level + Correct Factor.

2. If Peak Result complies with AV limit, AV Result is deemed to comply with AV limit.

3. Test setup: RBW: 1 MHz, VBW: 3 MHz, Sweep time: auto.

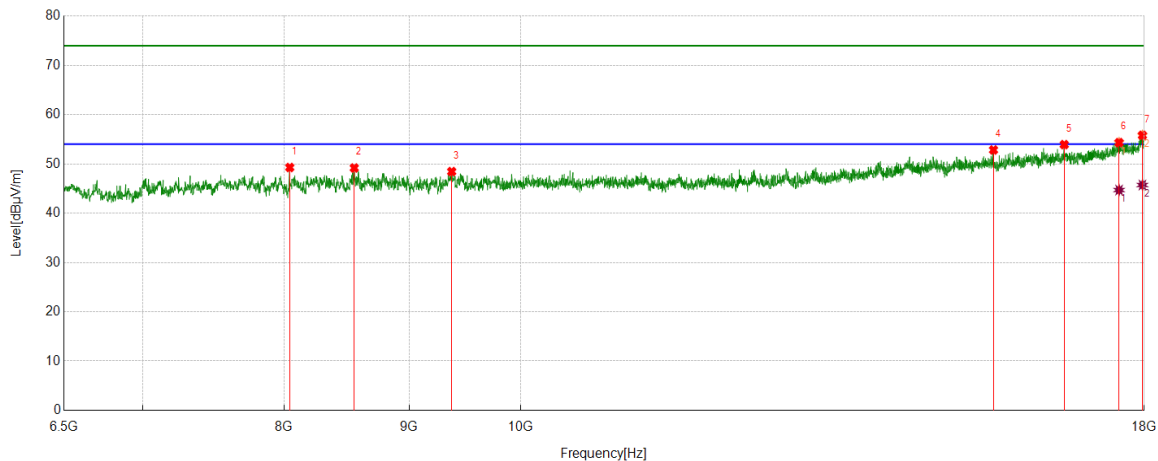
4. Peak: Peak detector.

5. AVG: VBW refer to section 6.2.

6. For above 6.5GHz part, filter losses were only considered in the spurious frequency bands and the authorized band were not corrected for HPF losses. The proper operation of the transmitter prior to adding the filter to the measurement chain.

7. Only the worst case emission was recorded, if it complies with the limit, the other emissions deemed to comply with the limit.

Test Mode	Channel	Polarization	Verdict
11a	5240	Vertical	PASS



#### PK Result:

No.	Frequency [MHz]	Reading Level [dBuV]	Correct Factor [dB/m]	Result [dBuV/m]	Limit [dBuV/m]	Margin [dB]	Remark
1	8043.1739	43.65	5.63	49.28	74.00	-24.72	Vertical
2	8547.3412	42.78	6.40	49.18	74.00	-24.82	Vertical
3	9369.7283	41.95	6.50	48.45	74.00	-25.55	Vertical
4	15615.2692	39.13	13.70	52.83	74.00	-21.17	Vertical
5	16692.6154	38.11	15.81	53.92	74.00	-20.08	Vertical
6	17578.2630	36.39	17.94	54.33	74.00	-19.67	Vertical
7	17969.3282	36.18	19.63	55.81	74.00	-18.19	Vertical

#### AV Result:

No.	Frequency [MHz]	Reading Level [dBuV]	Correct Factor [dB/m]	Result [dBuV/m]	Limit [dBuV/m]	Margin [dB]	Remark
1	17578.2630	26.76	17.94	44.70	54.00	-9.30	Vertical
2	17969.3282	26.09	19.63	45.72	54.00	-8.28	Vertical

Remark: 1. Measurement = Reading Level + Correct Factor.

2. If Peak Result complies with AV limit, AV Result is deemed to comply with AV limit.

3. Test setup: RBW: 1 MHz, VBW: 3 MHz, Sweep time: auto.

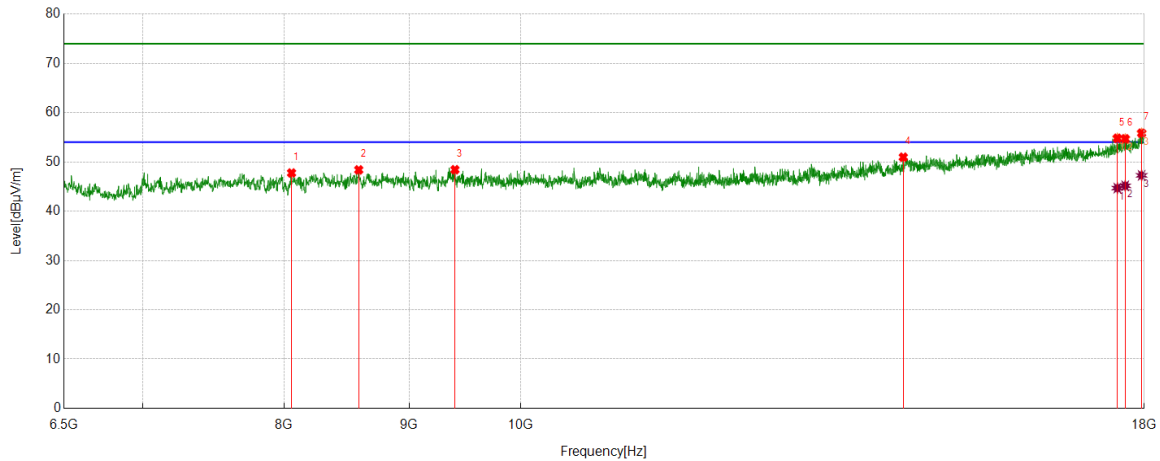
4. Peak: Peak detector.

5. AVG: VBW refer to section 6.2.

6. For above 6.5GHz part, filter losses were only considered in the spurious frequency bands and the authorized band were not corrected for HPF losses. The proper operation of the transmitter prior to adding the filter to the measurement chain.

7. Only the worst case emission was recorded, if it complies with the limit, the other emissions deemed to comply with the limit.

Test Mode	Channel	Polarization	Verdict
11a	5260	Horizontal	PASS



#### PK Result:

No.	Frequency [MHz]	Reading Level [dBuV]	Correct Factor [dB/m]	Result [dBuV/m]	Limit [dBuV/m]	Margin [dB]	Remark
1	8056.5928	42.29	5.47	47.76	74.00	-26.24	Horizontal
2	8583.7640	42.15	6.24	48.39	74.00	-25.61	Horizontal
3	9398.4831	41.82	6.60	48.42	74.00	-25.58	Horizontal
4	14342.3904	38.36	12.60	50.96	74.00	-23.04	Horizontal
5	17549.5083	37.06	17.74	54.80	74.00	-19.20	Horizontal
6	17679.8633	36.59	18.11	54.70	74.00	-19.30	Horizontal
7	17955.9093	36.27	19.58	55.85	74.00	-18.15	Horizontal

#### AV Result:

No.	Frequency [MHz]	Reading Level [dBuV]	Correct Factor [dB/m]	Result [dBuV/m]	Limit [dBuV/m]	Margin [dB]	Remark
1	17549.5083	26.95	17.74	44.69	54.00	-9.31	Horizontal
2	17679.8633	27.05	18.11	45.16	54.00	-8.84	Horizontal
3	17955.9093	27.69	19.58	47.27	54.00	-6.73	Horizontal

Remark: 1. Measurement = Reading Level + Correct Factor.

2. If Peak Result complies with AV limit, AV Result is deemed to comply with AV limit.

3. Test setup: RBW: 1 MHz, VBW: 3 MHz, Sweep time: auto.

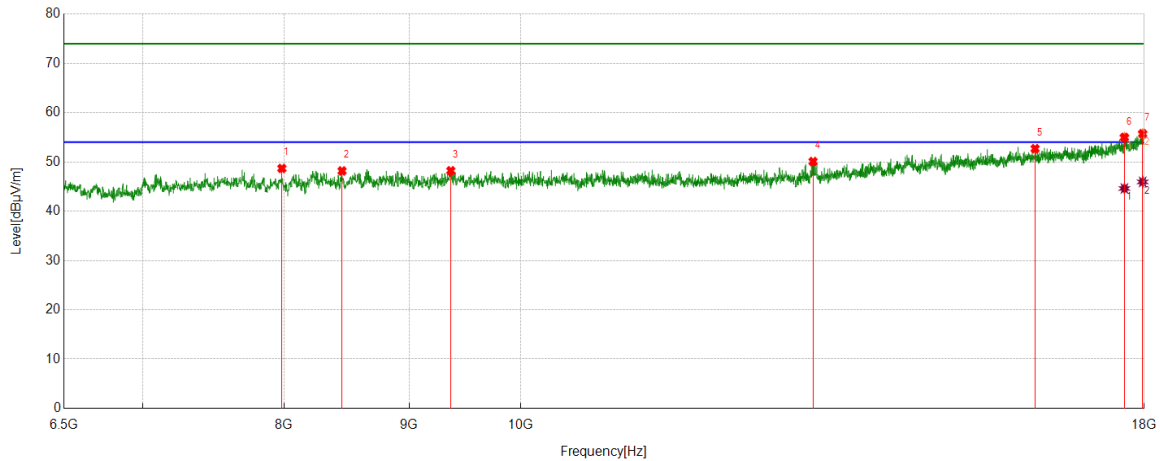
4. Peak: Peak detector.

5. AVG: VBW refer to section 6.2.

6. For above 6.5GHz part, filter losses were only considered in the spurious frequency bands and the authorized band were not corrected for HPF losses. The proper operation of the transmitter prior to adding the filter to the measurement chain.

7. Only the worst case emission was recorded, if it complies with the limit, the other emissions deemed to comply with the limit.

Test Mode	Channel	Polarization	Verdict
11a	5260	Vertical	PASS



#### PK Result:

No.	Frequency [MHz]	Reading Level [dBuV]	Correct Factor [dB/m]	Result [dBuV/m]	Limit [dBuV/m]	Margin [dB]	Remark
1	7983.7473	43.23	5.45	48.68	74.00	-25.32	Vertical
2	8449.5749	42.38	5.79	48.17	74.00	-25.83	Vertical
3	9362.0603	41.76	6.45	48.21	74.00	-25.79	Vertical
4	13173.0288	40.24	9.84	50.08	74.00	-23.92	Vertical
5	16240.2067	37.51	15.18	52.69	74.00	-21.31	Vertical
6	17666.4444	36.91	18.07	54.98	74.00	-19.02	Vertical
7	17973.1622	36.04	19.69	55.73	74.00	-18.27	Vertical

#### AV Result:

No.	Frequency [MHz]	Reading Level [dBuV]	Correct Factor [dB/m]	Result [dBuV/m]	Limit [dBuV/m]	Margin [dB]	Remark
1	17666.4444	26.54	18.07	44.61	54.00	-9.39	Vertical
2	17973.1622	26.26	19.69	45.95	54.00	-8.05	Vertical

Remark: 1. Measurement = Reading Level + Correct Factor.

2. If Peak Result complies with AV limit, AV Result is deemed to comply with AV limit.

3. Test setup: RBW: 1 MHz, VBW: 3 MHz, Sweep time: auto.

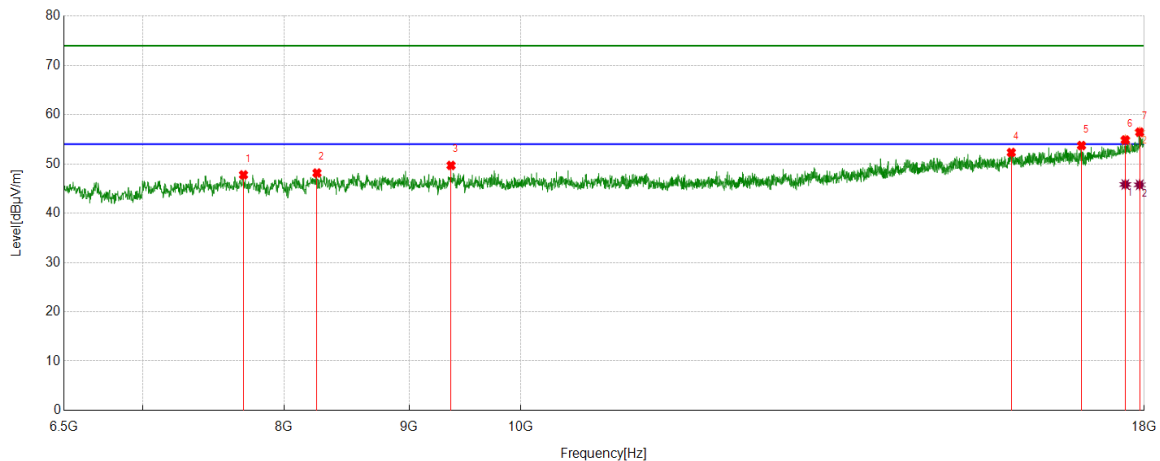
4. Peak: Peak detector.

5. AVG: VBW refer to section 6.2.

6. For above 6.5GHz part, filter losses were only considered in the spurious frequency bands and the authorized band were not corrected for HPF losses. The proper operation of the transmitter prior to adding the filter to the measurement chain.

7. Only the worst case emission was recorded, if it complies with the limit, the other emissions deemed to comply with the limit.

Test Mode	Channel	Polarization	Verdict
11a	5280	Horizontal	PASS



#### PK Result:

No.	Frequency [MHz]	Reading Level [dBuV]	Correct Factor [dB/m]	Result [dBuV/m]	Limit [dBuV/m]	Margin [dB]	Remark
1	7700.0333	42.16	5.62	47.78	74.00	-26.22	Horizontal
2	8252.1254	41.89	6.27	48.16	74.00	-25.84	Horizontal
3	9363.9773	43.22	6.47	49.69	74.00	-24.31	Horizontal
4	15879.8133	37.59	14.73	52.32	74.00	-21.68	Horizontal
5	16966.7445	37.63	16.10	53.73	74.00	-20.27	Horizontal
6	17681.7803	36.74	18.12	54.86	74.00	-19.14	Horizontal
7	17923.3206	37.08	19.36	56.44	74.00	-17.56	Horizontal

#### AV Result:

No.	Frequency [MHz]	Reading Level [dBuV]	Correct Factor [dB/m]	Result [dBuV/m]	Limit [dBuV/m]	Margin [dB]	Remark
1	17681.7803	27.71	18.12	45.83	54.00	-8.17	Horizontal
2	17923.3206	26.40	19.36	45.76	54.00	-8.24	Horizontal

Remark: 1. Measurement = Reading Level + Correct Factor.

2. If Peak Result complies with AV limit, AV Result is deemed to comply with AV limit.

3. Test setup: RBW: 1 MHz, VBW: 3 MHz, Sweep time: auto.

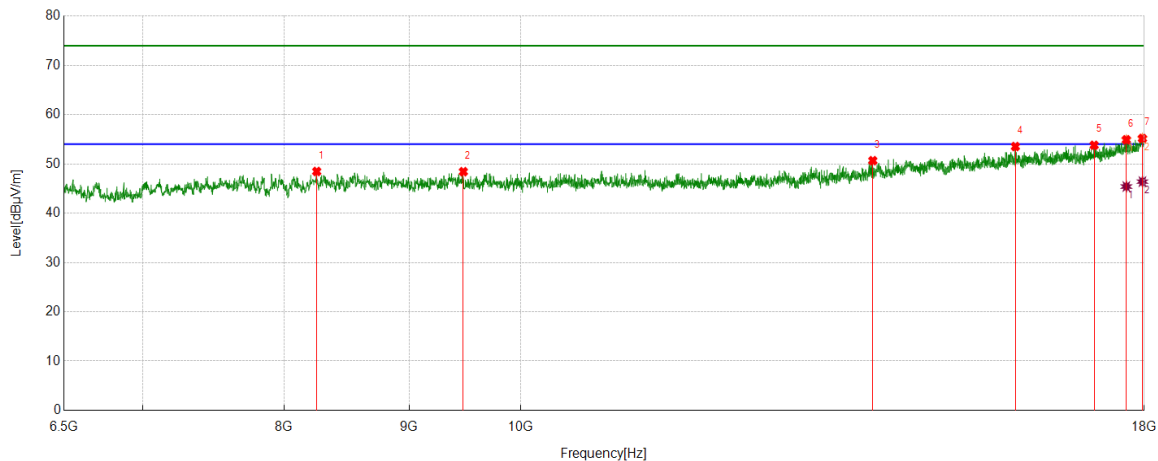
4. Peak: Peak detector.

5. AVG: VBW refer to section 6.2.

6. For above 6.5GHz part, filter losses were only considered in the spurious frequency bands and the authorized band were not corrected for HPF losses. The proper operation of the transmitter prior to adding the filter to the measurement chain.

7. Only the worst case emission was recorded, if it complies with the limit, the other emissions deemed to comply with the limit.

Test Mode	Channel	Polarization	Verdict
11a	5280	Vertical	PASS



#### PK Result:

No.	Frequency [MHz]	Reading Level [dBuV]	Correct Factor [dB/m]	Result [dBuV/m]	Limit [dBuV/m]	Margin [dB]	Remark
1	8250.2084	42.15	6.32	48.47	74.00	-25.53	Vertical
2	9473.2455	41.98	6.45	48.43	74.00	-25.57	Vertical
3	13935.9893	39.28	11.38	50.66	74.00	-23.34	Vertical
4	15941.1569	39.02	14.51	53.53	74.00	-20.47	Vertical
5	17169.9450	37.33	16.46	53.79	74.00	-20.21	Vertical
6	17699.0332	36.64	18.26	54.90	74.00	-19.10	Vertical
7	17969.3282	35.54	19.63	55.17	74.00	-18.83	Vertical

#### AV Result:

No.	Frequency [MHz]	Reading Level [dBuV]	Correct Factor [dB/m]	Result [dBuV/m]	Limit [dBuV/m]	Margin [dB]	Remark
1	17699.0332	27.15	18.26	45.41	54.00	-8.59	Vertical
2	17969.3282	26.78	19.63	46.41	54.00	-7.59	Vertical

Remark: 1. Measurement = Reading Level + Correct Factor.

2. If Peak Result complies with AV limit, AV Result is deemed to comply with AV limit.

3. Test setup: RBW: 1 MHz, VBW: 3 MHz, Sweep time: auto.

4. Peak: Peak detector.

5. AVG: VBW refer to section 6.2.

6. For above 6.5GHz part, filter losses were only considered in the spurious frequency bands and the authorized band were not corrected for HPF losses. The proper operation of the transmitter prior to adding the filter to the measurement chain.

7. Only the worst case emission was recorded, if it complies with the limit, the other emissions deemed to comply with the limit.