



福贝特国际（香港）有限公司

客 户：奥尼
机 型：C109
芯 片：

制作人：Andy

日 期：2023.8.31



目录

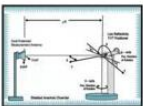
- 1 项目调试简介
- 2 测试仪器与环境
- 3 项目版本提纲
- 4 芯片传导
- 5 阻抗, 回波损耗, 驻波比
- 6 OTA有源数据 (自由场)
- 7 OTA有源数据 (头模)
- 8 实测及环境
- 9 天线环境处理
- 10 总结&附加说明

OTA LAB

拥有 OTA 实验室 5m * 3m*3m 单探头一座，频率范围 400MHz-6GHz，支持无源，GSM,CDMA,WCDMA,TD,LTE,BT,WIFI,GPS,NB-IOT等有源测试，拥有模拟人头手测试设备。

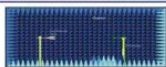
微波暗室测量系统

我可微波暗室是全球最先进的3D测量系统之一。它可以完成无源天线方向图、增益、效率以及有源整机的3D/2D TRP&TIS的精确测量。测试适用范围：OTA 有源测试：BT/GPS/WIFI/2G/3G/LTE，无源测试：0.4GHz-6GHz。能同时满足被测天线有源与无源性能测量。符合OTA性能测量规范。



Microwave darkroom measurement system

The microwave anechoic chamber is the most advanced 3D measurement system in the world. Which can measure passive antenna pattern, gain, efficiency and active 3D/2D TRP&TIS accurately. Test scope of application: OTA Active: BT/GPS/WIFI/2G/3G/LTE, Passive:0.4GHz-6GHz. The chamber is compliant to OTA performance measurement specifications, which is designed for both active and passive test.

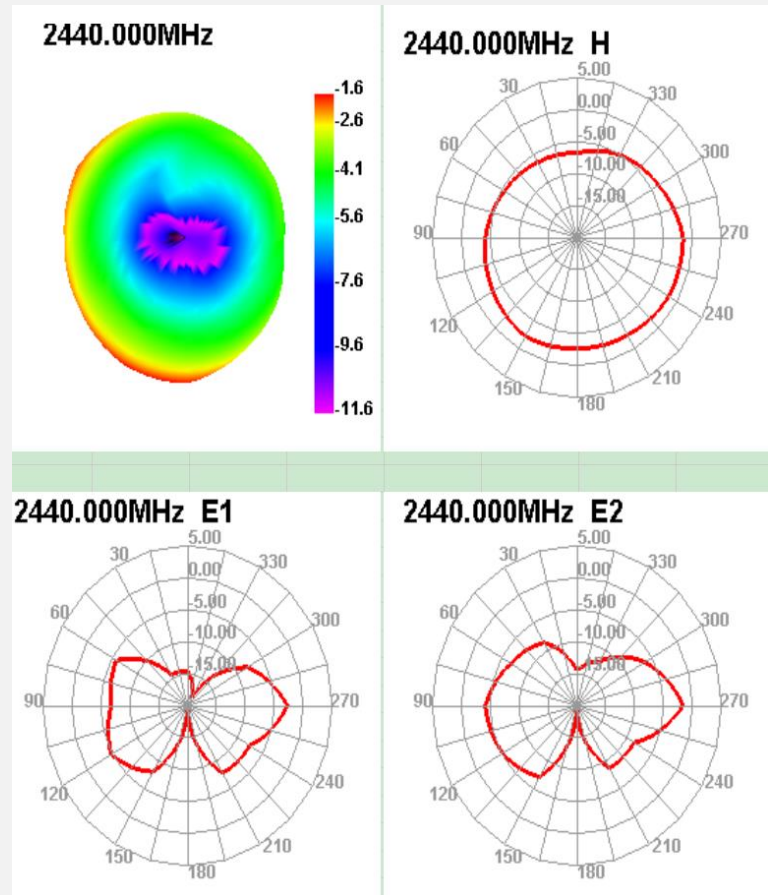


报告版本提纲

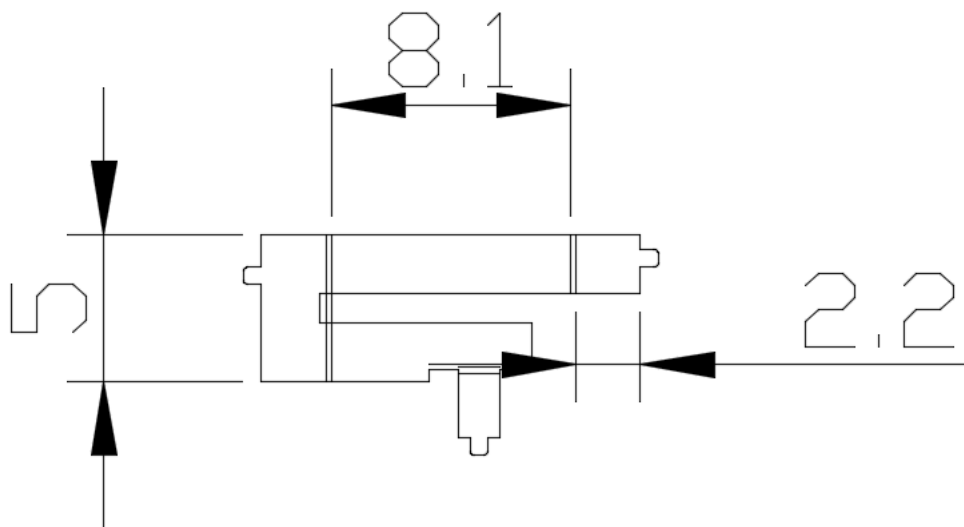
机型类别	TWS耳机	
调试频段及材质需求	BT	2.4GHz
	材质	FPC/钢片
调试性能要求	以客户实际体验及暗室数据为准	
版本	V1.0	

钢片天线效率

Passive Test For BT			
Freq (MHz)	Effi (%)	Effi (dB)	Gain (dBi)
2400	26.49	-5.77	-1.28
2410	26.91	-5.7	-1.1
2420	28.99	-6.38	-1.77
2430	28.78	-6.06	-1.48
2440	29.82	-6.05	-1.61
2450	30.69	-5.42	-1.1
2460	28.38	-5.95	-1.75
2470	27.57	-5.44	-1.24
2480	28.13	-5.51	-1.33



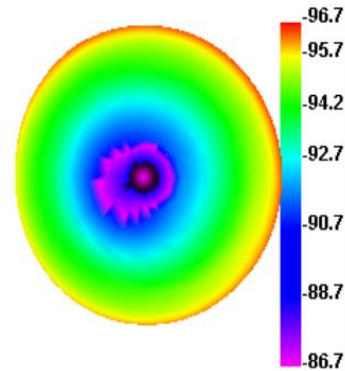
钢片图纸参数



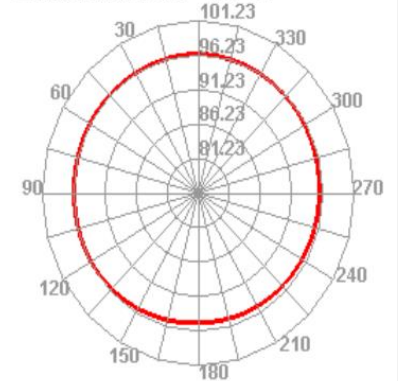
钢片有源测试

R			
Test	Bluetooth TIS		
Result	0	39	78
Frequency (MHz)	2402	2441	2480
TRP (dBm)	20.59	20.42	19.2
TIS (dBm)	-93.93	-93.82	-93.63

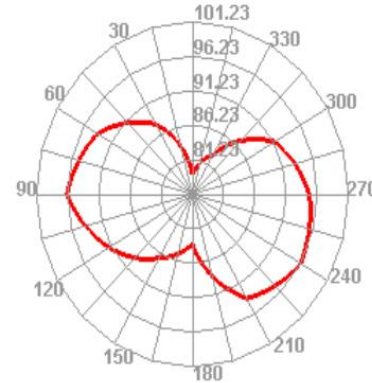
Bluetooth 39 TIS



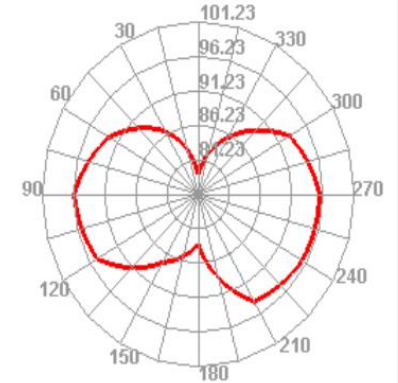
Bluetooth 39 TIS H



Bluetooth 39 TIS E1



Bluetooth 39 TIS E2





谢谢，合作愉快！

Thank You!

The Concepts National Income And National Product Have Roughly
The Same Value And Can Be Used Interchangeably If Our Interest Is In
Their



Shenzhen Fbetter Electronic Co.,Ltd
ADD: Introduction Building 6F, Xinan Street 71,
Baoan District,Shenzhen, Guangdong,