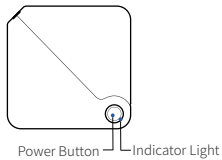
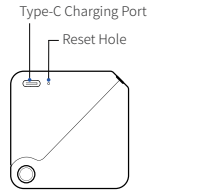
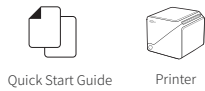


## Product Introduction

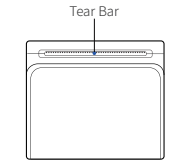
### Appearance and Components



### Packing List



**⚠** The actual content inside the box shall be based on the actual object.



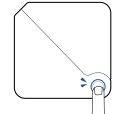
## Product Introduction

### Indicator Status

- White Light** **Abnormal State**
  - Constant brightness: abnormal (paper shortage/cover opening/TPH overheating)
  - Slow flashing: low battery
- White Light** **Basic State**
  - Flash: Firmware upgrade in progress
  - Slow flashing: charging
  - Always on: Printer ready/Bluetooth connected successfully/Bluetooth disconnected/Bluetooth lost

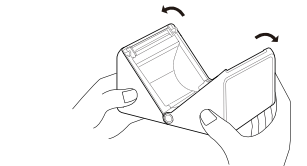
### On/Off

Long press the power button for 3 seconds to turn it on/off.

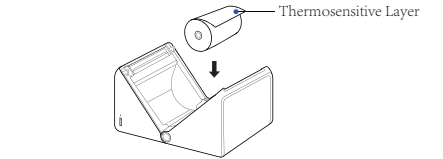


## Paper Loading Instruction

**01** Use both hands to pry the cover apart on both sides.

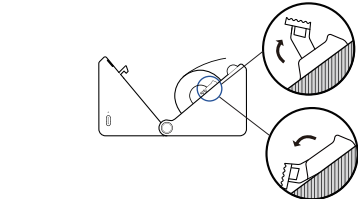


**02** As shown in the following figure, install the paper roll with the thermal side facing outward.

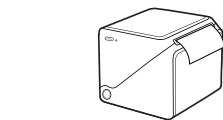


## Paper Loading Instruction

**03** Move the paddle switch up and adjust the paper limiter according to the width of the paper roll. After adjustment, press down the paddle switch and lock the paper limiter.



**04** Pull out a small piece of paper and close the lid.



## APP Download

Scan QR code to download the app:



"HerePrint" APP



"HereLabel" APP

## Connect Printing

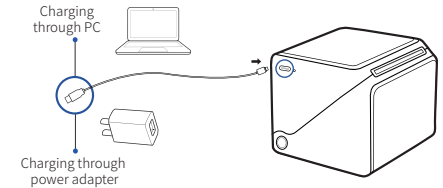
**01** Open the Hancode app and click on "My" - "Connect Device". Check the list of "Bluetooth devices", find "HM-T260L-XXXX", and click to connect.

**02** Click "New" - "New Label". Set the label width and height based on the actual size of the label paper.

**03** Edit the labels as needed, click "Next" after editing, and then print.

## Battery charging

If you need to charge, please use a USB Type-C to Type-A cable and connect the power adapter (self provided, adapter output not higher than 5V/1A) to the printer for charging. When the battery level is low, the indicator light will flash (white, flashing once per second). Please charge in a timely manner. If you continue printing, the printer may automatically shut down.



**⚠** Note: You can use a power adapter or computer USB for power supply, and the adapter is not included when shipping. If consumers use a power adapter for charging, they should purchase and use a power adapter that has obtained CCC certification and meets the standard requirements.



Online WeChat Customer Service  
(Warranty/After Sales/Technical Support)

## FCC WARNING

This device complies with part 15 of the FCC Rules.

Operation is subject to the following two conditions: (1) this device may not cause harmful interference, and (2) this device must accept any interference received, including interference that may cause undesired operation.

Any changes or modifications not expressly approved by the party responsible for compliance could void the user's authority to operate the equipment.

NOTE: This equipment has been tested and found to comply with the limits for a Class B digital device, pursuant to Part 15 of the FCC Rules.

These limits are designed to provide reasonable protection against harmful interference in a residential installation. This equipment generates, uses and can radiate radio frequency energy and, if not installed and used in accordance with the instructions, may cause harmful interference to radio communications.

However, there is no guarantee that interference will not occur in a particular installation. If this equipment does cause harmful interference to radio or television reception, which can be determined by turning the equipment off and on, the user is encouraged to try to correct the interference by one or more of the following measures:

- Reorient or relocate the receiving antenna.
- Increase the separation between the equipment and receiver.
- Connect the equipment into an outlet on a circuit different from that to which the receiver is connected.
- Consult the dealer or an experienced radio/TV technician for help. To maintain compliance with FCC's RF Exposure guidelines, This equipment should be installed and operated with minimum distance between 20cm the radiator your body: Use only the supplied antenna.

