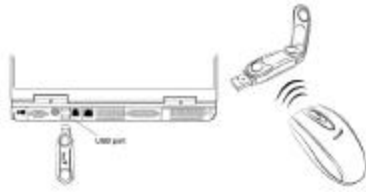


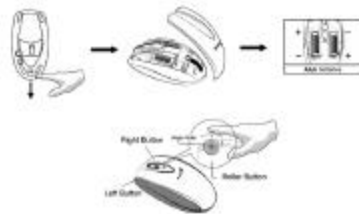
## Wireless Mouse

Model : GM-03018U/T, GM-03018U/R

### Hardware Installation



1.  
You can connect the receiver to a USB port of a PC



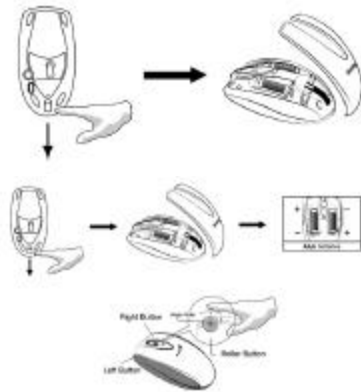
2.  
Install two AAA batteries in the mouse.
3.  
Turn on your computer.
4.  
After you open Windows, please press the button on the receiver first and then press the button under the mouse for channel setting.  
Important: Remember do not put the batteries in the wrong direction, use the same types of batteries. Also, keep all drinks away! If any spill occurs on the receiver, unplug the USB connector first and clean the receiver immediately. Please remove the batteries if you do not use this device for at least two weeks.  
Warning: (Troubleshooting)

1.  
Please do not use Wireless Mini Navigator on a desk which is made of glass, mirror, iron, or black velvet. Also, a flat surface is necessary or the Optical Sensor will error easily. When you use Wireless Mini Navigator on a desk that is made of metal, try using a pad and reduce the receiving distance.
2.  
Before the first installation is completed (channel setting ready), the mouse will not work in DOS.
3.  
The Wireless Mini Navigator channel provides 256 ID-codes, and it automatically selects the ID # for your mouse. You can only set up one Wireless Mini Navigator at a time. But if you have additional Wireless Mini Navigator sets in an area of 10 square meters, more interference will occur between the receiver and your mouse.
4.  
If you feel the mouse does not move smooth as usual, then the batteries have lost their charge, so please replace them. Also, the wireless icon will be blinking "red" when there is a battery-low situation. The LED on the receiver shows the battery-recharging status (from shining to LED completely "on" for battery full). You should set up the channel every time you replace the batteries.
5.  
The Wireless Mini Navigator with radio frequency gives you free movement and an enjoyable experience. For optimal performance, place the receiver at least 8 inches (about 20 cm) away from the mouse and other electrical devices, such as the computer, monitor, and etc.

### Software Installation

1. Make sure the mouse is connected to the computer.

2. Put the Setup disk (or CD) into the disk drive.
  3. Follow the instructions on the screen to finish the software installation.
- Factory Setting/ faceplates changng



#### Button Assignments

The Button Assignment feature lets you work in a more efficient way because you can assign the most frequently used commands in Windows to the mouse buttons.

#### Magic-Roller

Press the “Magic-Roller” to surf the Internet and Windows documents

#### Left Button

Provides traditional mouse functions such as click, double click and drag.

#### Right Button

You can assign this button frequently used keyboard and mouse functions in addition to features like EasyJump, Auto-Panning, Zoom, etc.

#### Roller Button

You can assign this button frequently used keyboard and mouse functions in addition to features like EasyJump, Auto-Panning, Zoom, etc.

#### Side Buttons

You can assign certain functions to the upper or lower side button with the roller.

#### MouseMate Software Features

#### Browsing Speed

You can adjust the browsing speed when you surf the Internet or Windows documents.

#### Browsing

#### Direction

Move the “Magic-Roller” forward and the screen will browse to the top of the document. Move it in reverse and the document will go in the opposite direction

#### Button Find

Automatically positions the cursor on the default button, usually the OK button, when the dialog box appears on your screen.

#### Trails

This option makes it easier to find the cursor when using an LCD monitor. This option cannot be used if your monitor does not support it.

#### Loop

When you move the cursor to the top (or bottom) of the screen, it will automatically move the cursor to the bottom (or top) of the screen.

#### Mouse Speed

This function lets you adjust the speed at which the pointer moves across the screen.

#### Double Click

#### Speed

Use this function to set the double click speed of the mouse.

#### Swap Left/Right

Select this option if you want to have the mouse operate with the right mouse button as the primary button.

## Pointers Folders

This lets you change the shape of the cursor.

## Office Mode

Only supports Microsoft Office along with some new applications. Features include zoom, scrolling and Auto-scrolling features. It's similar to Microsoft's IntelliMouse.

## Genius Mode

Supports all applications that use scrollbars, including Office, with zoom, Auto-panning, and scrolling functions.

## About

Click here to open the Genius Homepage

["www.geniusnet.com.tw"](http://www.geniusnet.com.tw)

## Orientation

This function lets you set the angle when you move the mouse upward. It gives you a more comfortable angle when holding the mouse. This function works best with a portable trackball.

## EasyJump

"EasyJump" now has two working modes: Office EasyJump mode and Traditional EasyJump mode.

"Office EasyJump" lets you use eight commonly used applications and 16 Cyber functions more easily and quickly.

Once you press the button you assigned, "Office EasyJump" will be displayed on a Frisbee. Note that the functions are only available in the applications they belong to.

Click this application button to show the mouse control panel. You can check or modify the mouse properties.

Click this function and the pan icon appears. You can move the mouse in any direction in a document or a spreadsheet. The farther you move the pointer from the pan icon, the faster you can pan in that direction.

Click this function and Office EasyJump Frisbee will always be on the screen and the button will change to .

Click it again to cancel this effect.

This is a programmable application button. Press the right button on this icon and a dialog box will display for you to select an executable program. Click on this button to launch your specific application.

Click this function to implement the "replace" function in the current application.

Click on this application to launch Microsoft Word.

Click this function to perform the "cut" function in Word.

Click this function to implement the "paste" function in Word.

Click on this application to launch Microsoft Excel.

Click this function to implement the "select all" function in Excel.

Click this function to perform the "undo" function in Excel.

Click on this application to launch Microsoft Power Point.

Click this function to implement the "zoom in" function in PowerPoint.

Click this function to implement the "zoom out" function in PowerPoint.

Click on this application to launch Outlook Express or any other email client application installed in your system.

Click this function to open a new email.

Click this function to forward a selected email in your mailbox.

Click on this application to open Microsoft Internet Explore or any other Internet browser installed in your system.

Click this function to return to the previous web page in your open Internet browser.

Click this function to move forward to the next web page in your open Internet browser.

Click on this application to launch Windows media player or any other multimedia player installed in your system.

Click this function to play/pause the current running media player.

Click this function to stop the current running media player.

Note: All the functions related to Office applications are programmable. Place the cursor on the function icon you want to change, and click the right button to select or reset the unit from the popup menu. From the dialog box, you can choose another function to use in the EasyJump Frisbee.

To change from Office EasyJump mode to Traditional EasyJump mode, just click the right button on the Genius logo in the center of the EasyJump Frisbee.

The “Traditional EasyJump” lets you use eight Cyber functions more easily and quickly.

Once you press the button you assigned, the “EasyJump” Frisbee will pop up and eight functions will be displayed on Frisbee.

Click this button to close the current window.

Click this button and the cursor will jump to the horizontal scrollbar. When you move your mouse, the open document or spreadsheet will scroll horizontally.

Click this button and the cursor will jump to the vertical scrollbar. When you move your mouse, the open document or spreadsheet will scroll vertically.

Click this button to open the Start Menu.

Click this button to open the Help button.

Click this button to open the Genius Mouse Control Panel.

Click the button and you can move the mouse in any direction in a document or a spreadsheet. The farther you move the pointer from the pan icon, the faster you can pan in that direction.

The buttons in “EasyJump Options” are especially used for Internet. The default function is “Open Browser” (button like ). You can select other functions from “EasyJump Options” in the “Settings” folder of the Genius Mouse Control Panel. The functions in “EasyJump Options” are:

“Add to Favorite [IE] ”

“Organize Favorite [IE] ”

“Add Bookmark [NetScape] ”

“Edit Bookmark [NetScape] ”

“Go Next [Forward] ”

“Go Previous [Back] ”

“Run Application”

#### Switch Applications

When the right-button or Magic-Roller is set to “Switch AP”, you can quickly switch from one open application to another without moving the mouse. To switch to a specific application, press the right button or the Magic-Roller to select the application.

#### Zoom function for Office and IE Applications

Press the “Ctrl” key and move the “Magic-Roller” forward (or backward) to set the Zoom In/Out function.

You can also use just one hand to Zoom In/Out: set the right button to be the “Ctrl” function, press the right button and move the “Magic-Roller” forward (or backward) to enlarge (or decrease) the document window.

#### Auto-Panning

You can set this function in the Button Assignment menu. Move the mouse, and the document moves in the direction you just moved.

#### Uninstall the Software

Follow these instructions to remove the software from your hard disk. In Windows, click on the Start button, select Programs and move to the mouse software. Then click on Uninstall software.

#### Customize the Software

This section shows you how to customize the software. To open the software control panel, you can double-click on the icon in the task bar or select the “Software” icon from the program group.

#### Close the Software

Click the right button on the taskbar, and select “Close Software” to close the software.

## **FCC Compliance and Advisory Statement**

This device complies with Part 15 of the FCC rules. Operation is subject to the following two conditions: 1) this device may not cause harmful interference, and 2) this device must accept any interference received, including interference that may cause undesired operation.

The equipment has been certified to comply with the limits for a Class B computing device pursuant to Part 15 of the FCC Rules. These limits are designed to provide reasonable protection against harmful interference in a residential installation. This equipment generates, uses, and can radiate radio frequency energy and, if not installed or used in accordance with the instructions, may cause harmful interference to radio communications. However, there is no guarantee that interference will not occur in a particular installation. If this equipment does cause harmful interference to radio or television reception, which can be determined by switching the equipment off and on. The user can try to correct the interference by the following measures:

Reorient or relocate the receiving antenna.

Increase the separation between the equipment and receiver.

Connect the equipment to an outlet on a circuit different from that to which the receiver is connected.

Consult the dealer or an experienced radio/TV technician for help.

Changes or modification not expressly approved by the party responsible for compliance could void the user's authority to operate the equipment.