

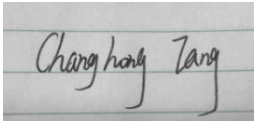
Antenna Reports

Company: OPPO Guangdong Mobile Telecommunications Co., Ltd.

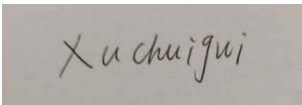
Model name:ODP2415

Issue date: 2024/12/30

Documented by: _____Changhong____Tang_____

A rectangular box containing a handwritten signature in black ink on a light gray background. The signature appears to be 'Changhong Tang'.

Test by: _____Chungui Xu_____

A rectangular box containing a handwritten signature in black ink on a light gray background. The signature appears to be 'Xu chuihui'.

Antenna Summary Table

Check items	Information
Provided by lab	oppo lab (GTS)
Manufacturer/ Brand name	Guangdong OPPO Mobile Telecommunications Corp., Ltd. NO.18 Haibin Road, Wusha Village, Chang'an Town, Dongguan City, Guangdong, China
Model name (Part number)	GTS2800 LLLQ753C1-2 LLLF753C1-2
Test environment	OPPO Dongguan RD team Lab with GTS2800 chamber/
Test software	GTS MaxSign- RayZone2800C_Z
List of calibrated test equipment	GTS2800 with calibrated date: 2024-06-30 Due date:2025-06-29 Anritsu MT8821C with calibrated date: 2024-06-30 Due date:2025-06-29
Antenna detail info.	ANT0: BT/WiFi2.4G, Cavity antenna. ANT1: BT/WiFi2.4G / 5G / 6G antenna (2.4~2.5GHz, 5.15~5.85GHz, 5.925~7.125GHz), Cavity antenna. ANT2: WiFi 5G / 6G antenna (5.15~5.85GHz,5.925~7.125GHz), Cavity antenna. WPT: (111 — 145 KHz),Loop antenna.
Antenna gain test data	Included antenna frequency, gain pattern

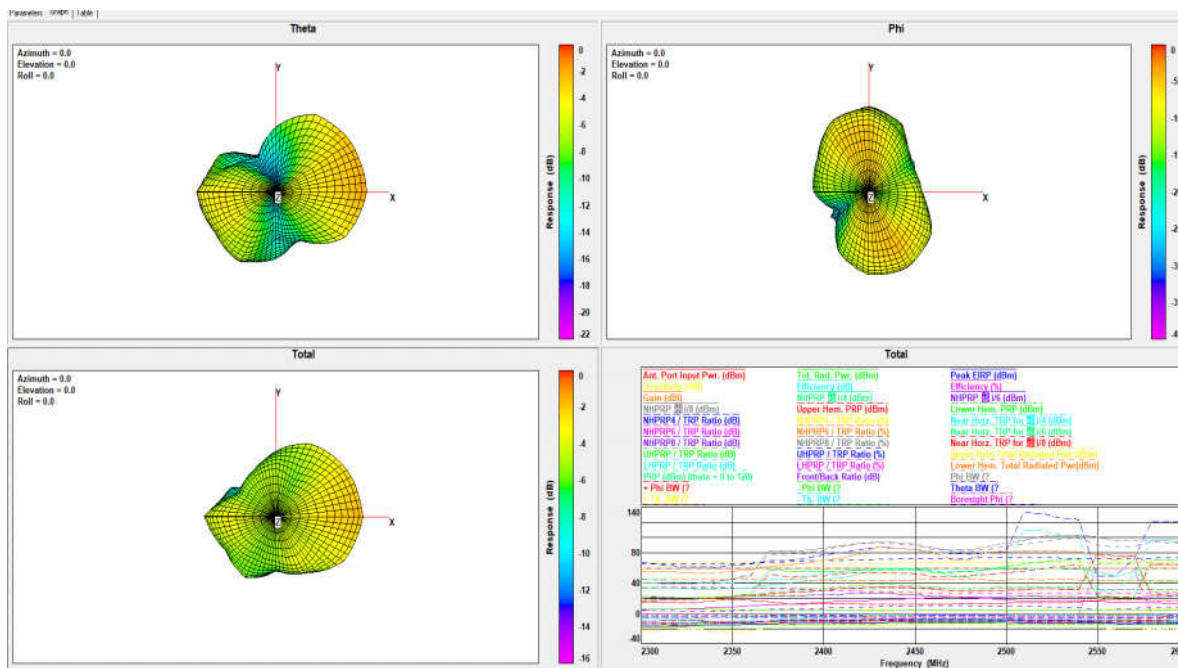
Note: Antenna gain was measured in the anechoic chamber, 3D scan was exercised, and the highest numbers are reported in this document.

Antenna type: Cavity antenna

BT/WLAN Peak Gain (dBi)			
2400~2483.5MHz	-1.1		

(Rear view– Front view)

WIFI 2.4G (2450 MHz)

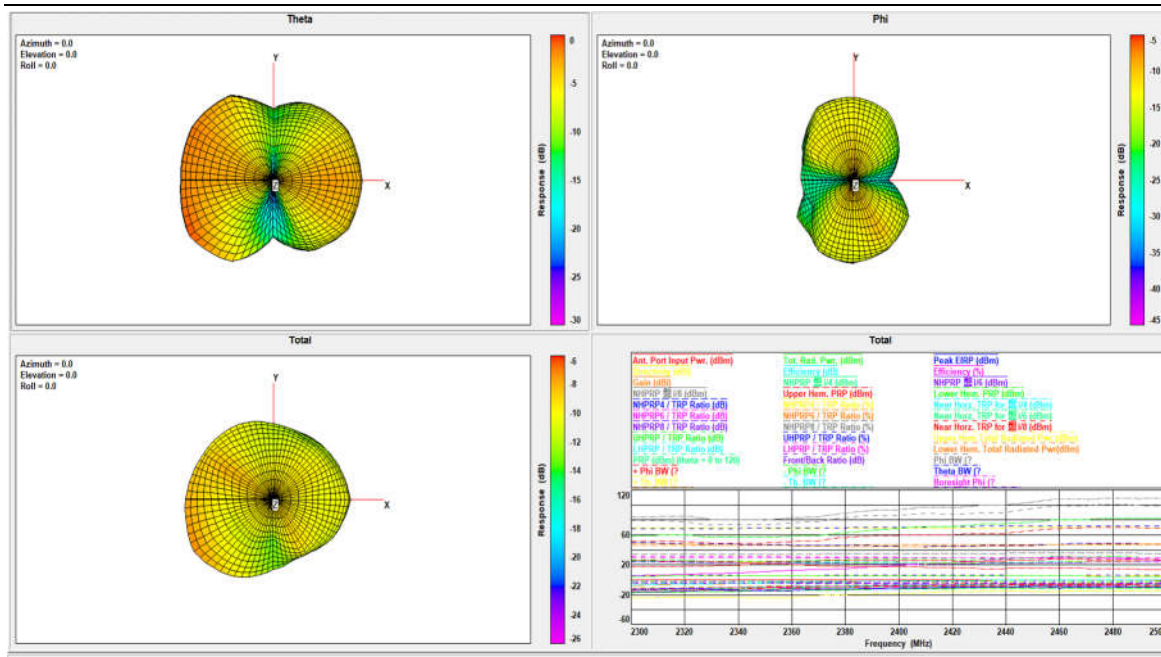


Antenna type: Cavity antenna

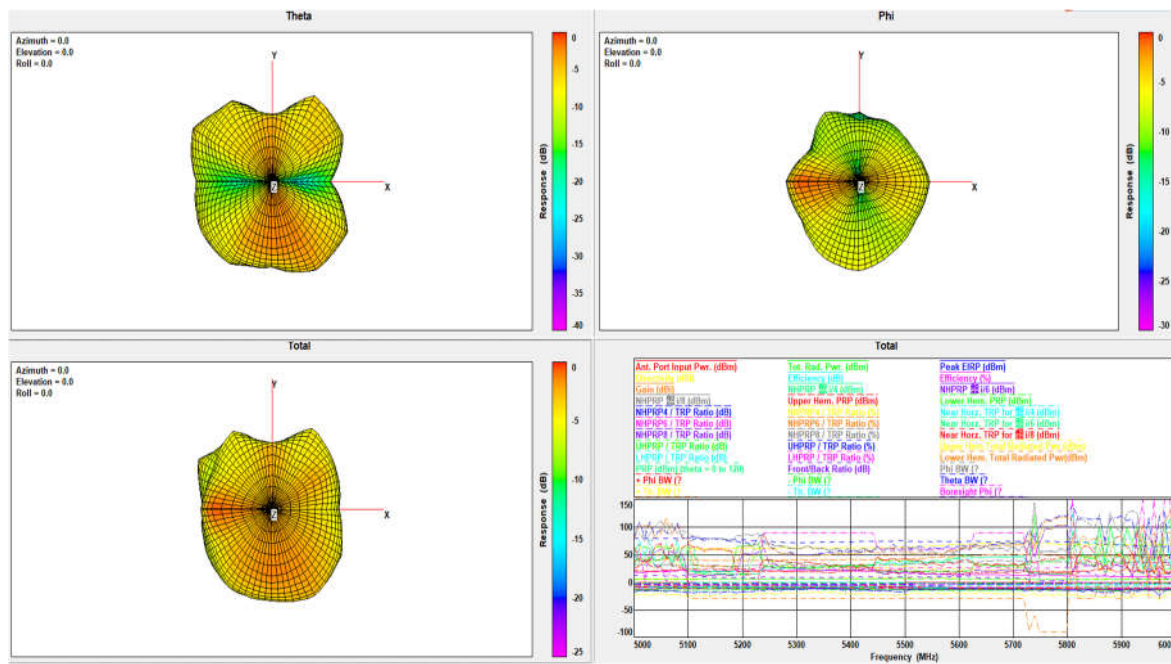
BT/WLAN Peak Gain (dBi)			
2400~2483.5MHz	0.0		
5150~5250MHz	-0.1	5470~5725MHz	0.0
5250~5350MHz	0.3	5725~5850MHz	-2.9
5925~6425MHz	0.8	6525~6875MHz	1.1
6425~6525MHz	0.8	6875~7125MHz	0.4

(Rear view– Front view)

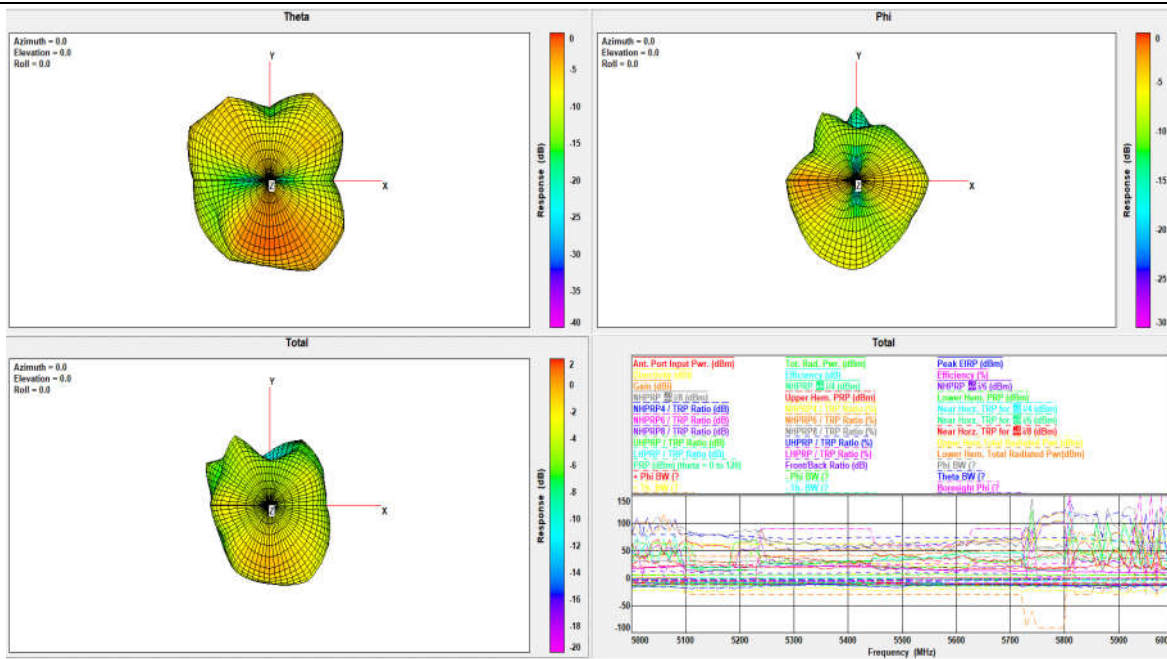
WIFI 2.4G (2450 MHz)



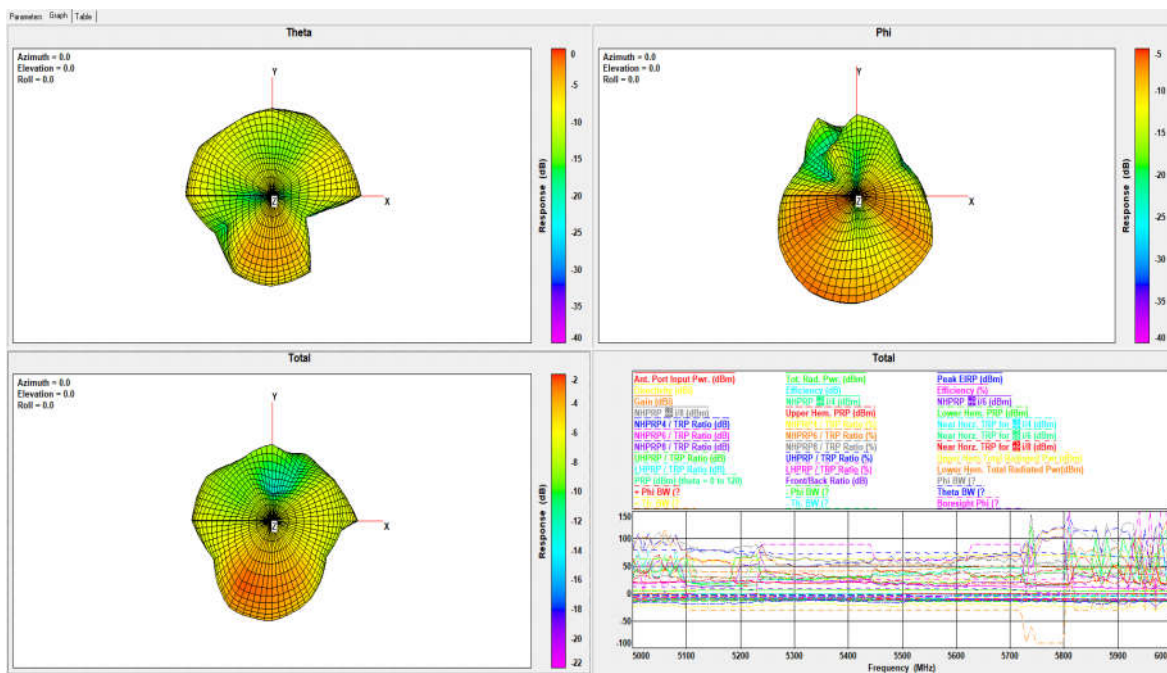
WIFI 5G (5200 MHz)



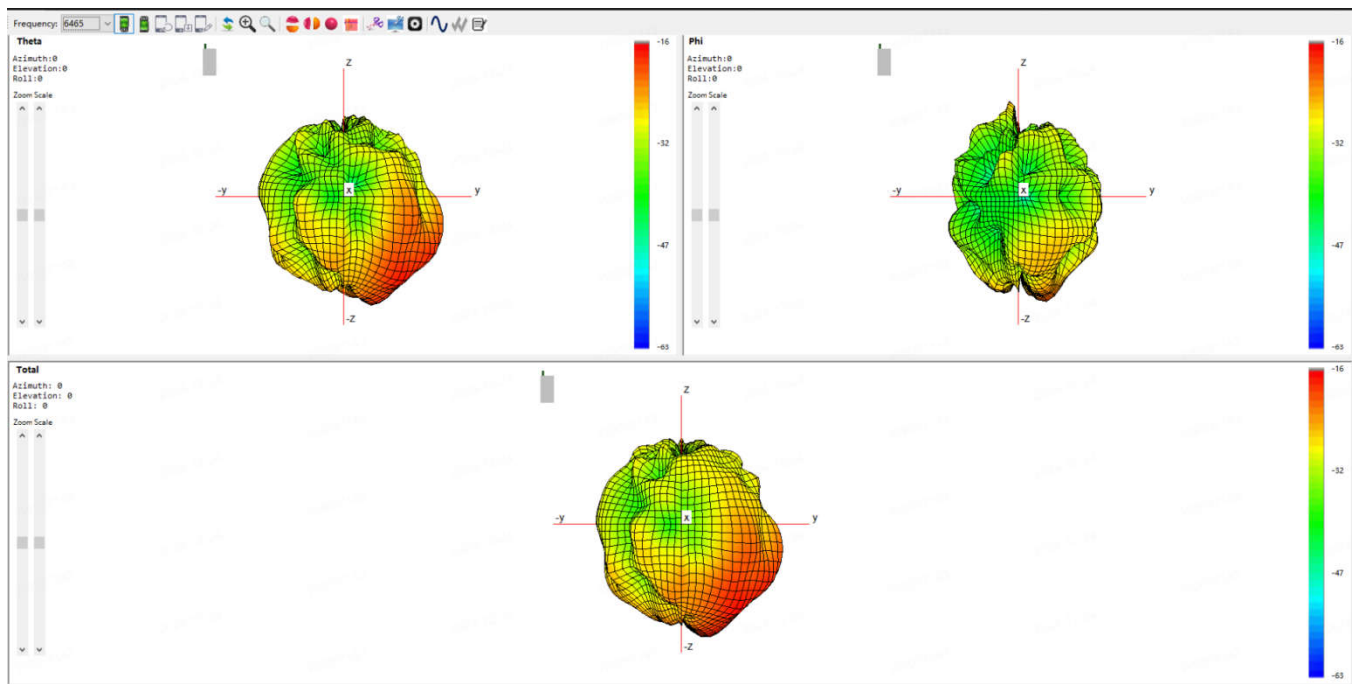
WIFI 5G (5300 MHz)



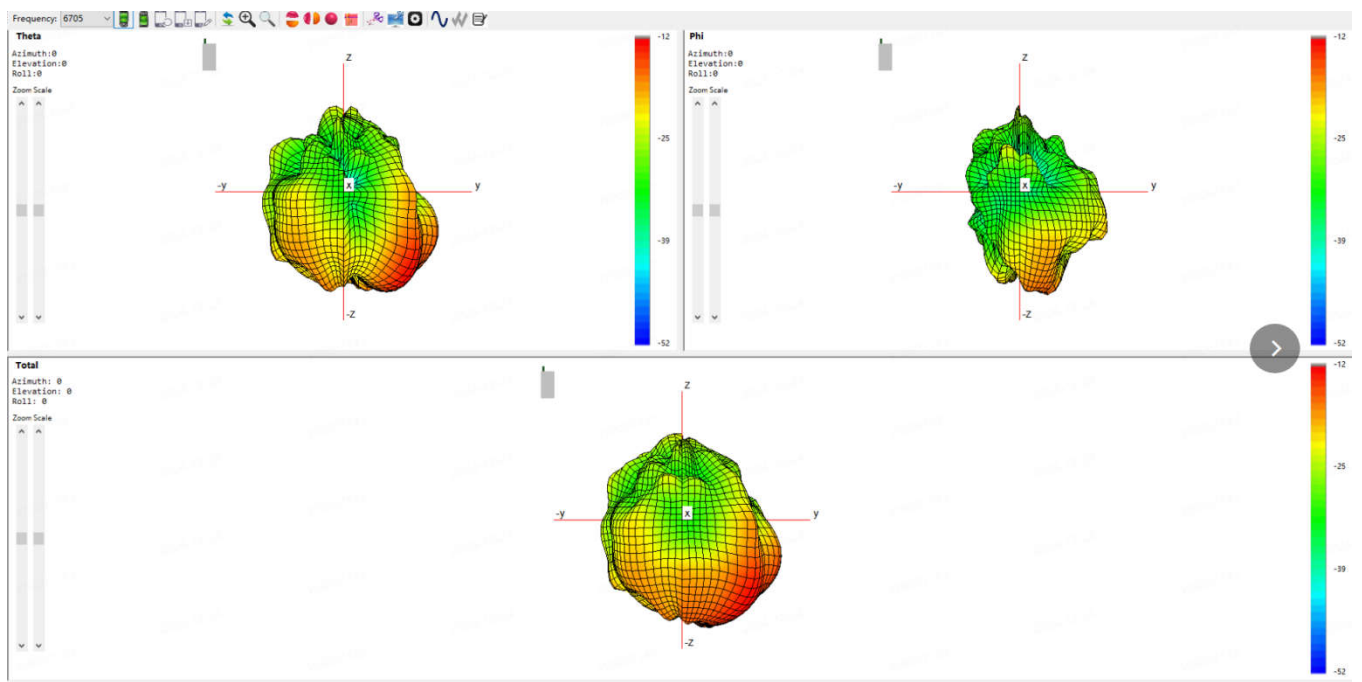
WIFI 5G (5500 MHz)



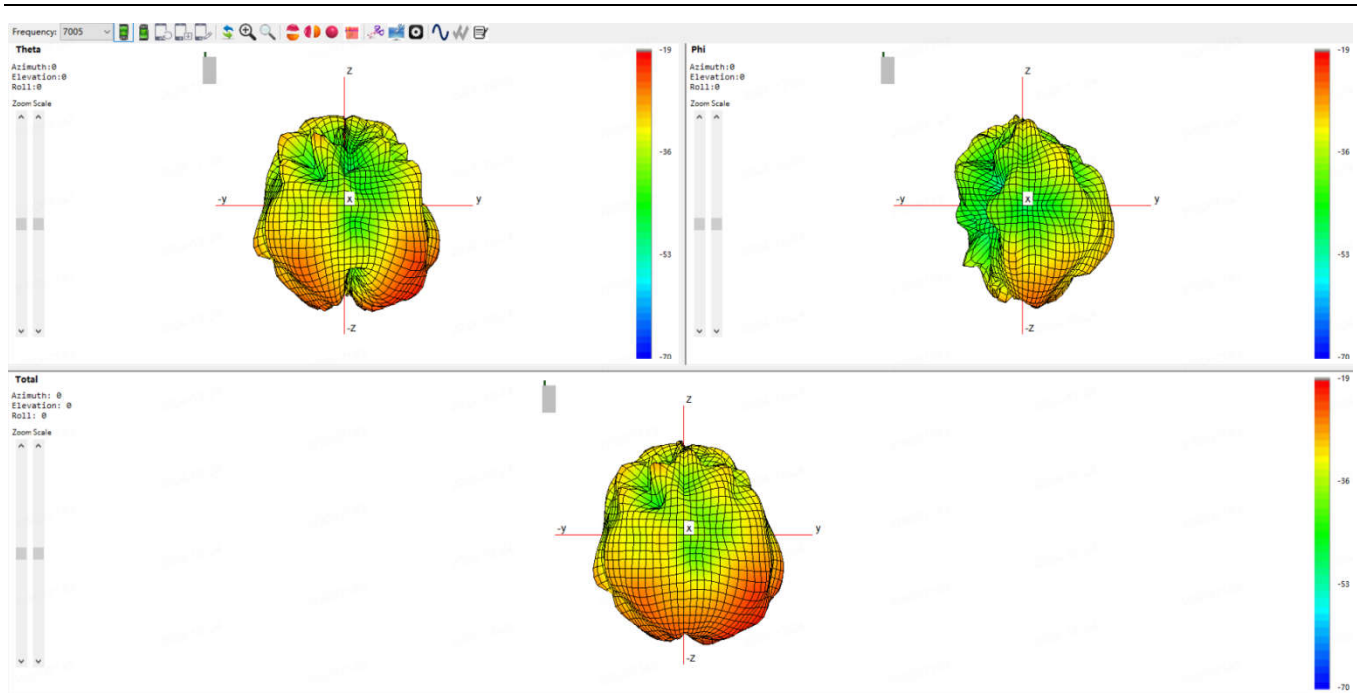
WIFI 5G (5800 MHz)



WIFI 6G (6700 MHz)



WIFI 6G (7000 MHz)



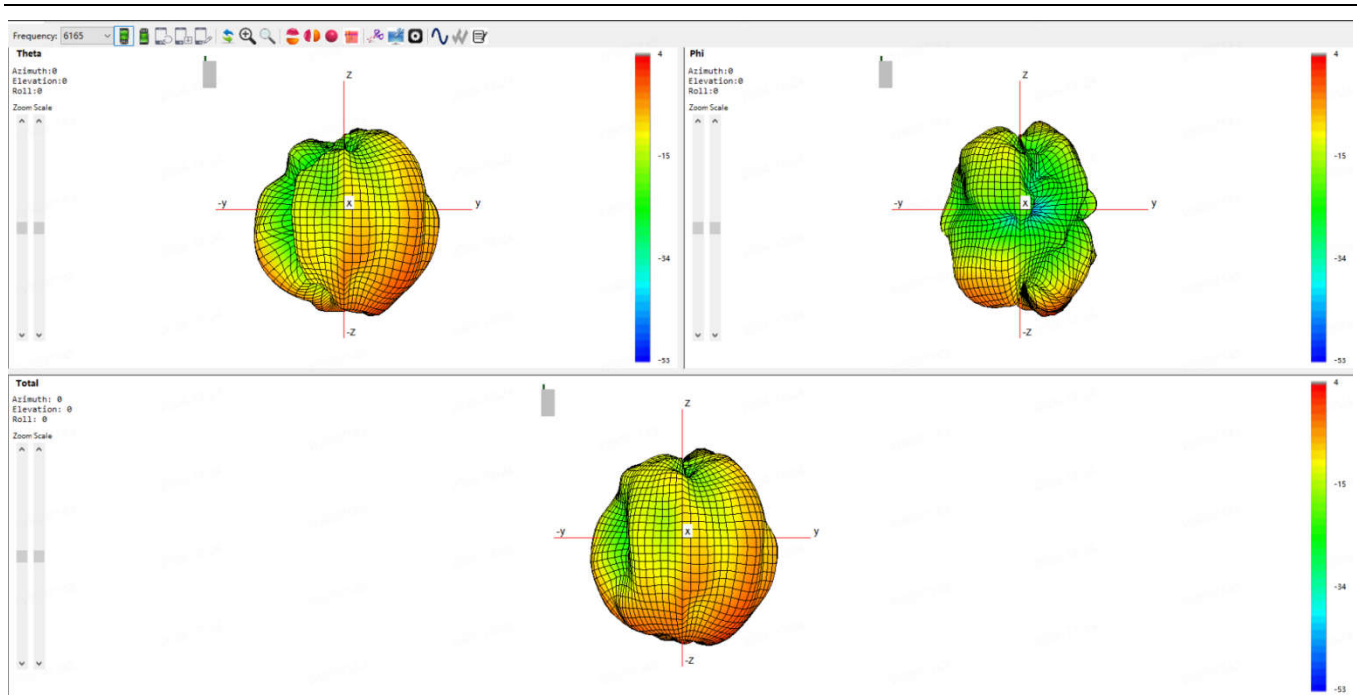
ANT2

Antenna type: Cavity antenna

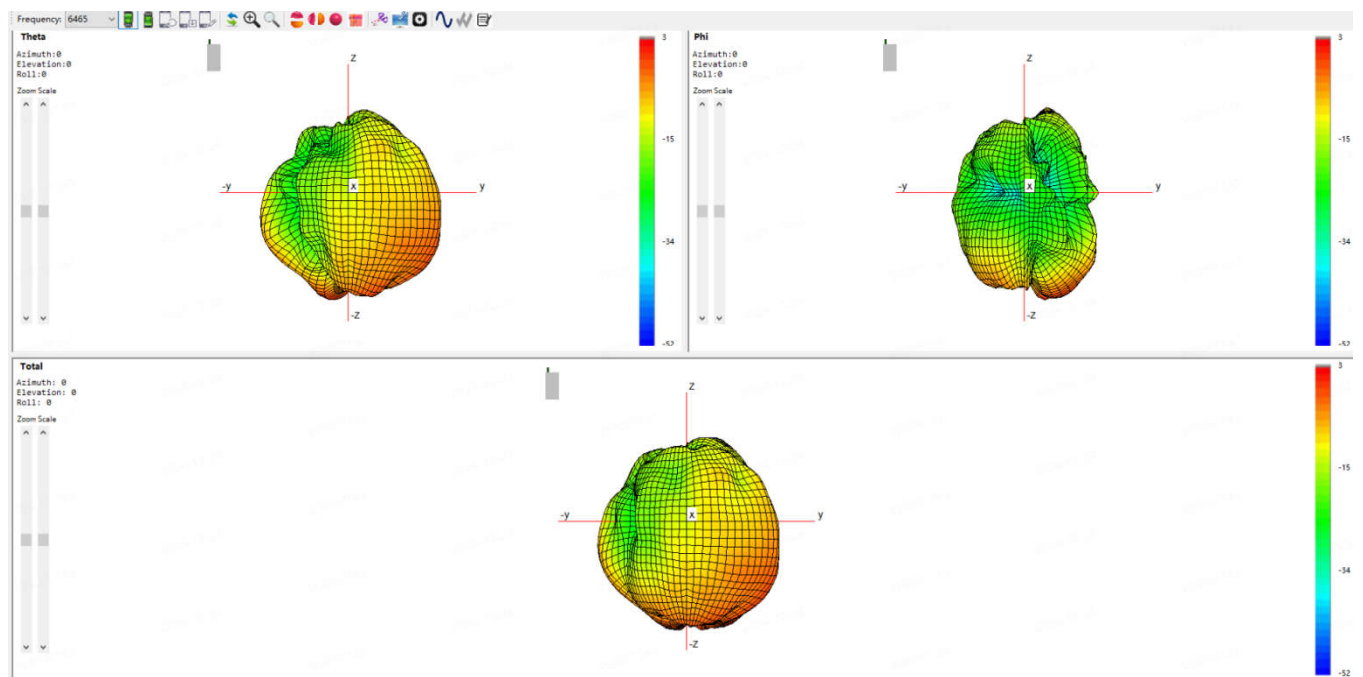
WLAN Peak Gain (dBi)			
5150~5250MHz	0.1	5470~5725MHz	-0.2
5250~5350MHz	-0.9	5725~5850MHz	-0.4
5925~6425MHz	1.3	6525~6875MHz	1.4
6425~6525MHz	1.3	6875~7125MHz	1.0

(Rear view– Front view)

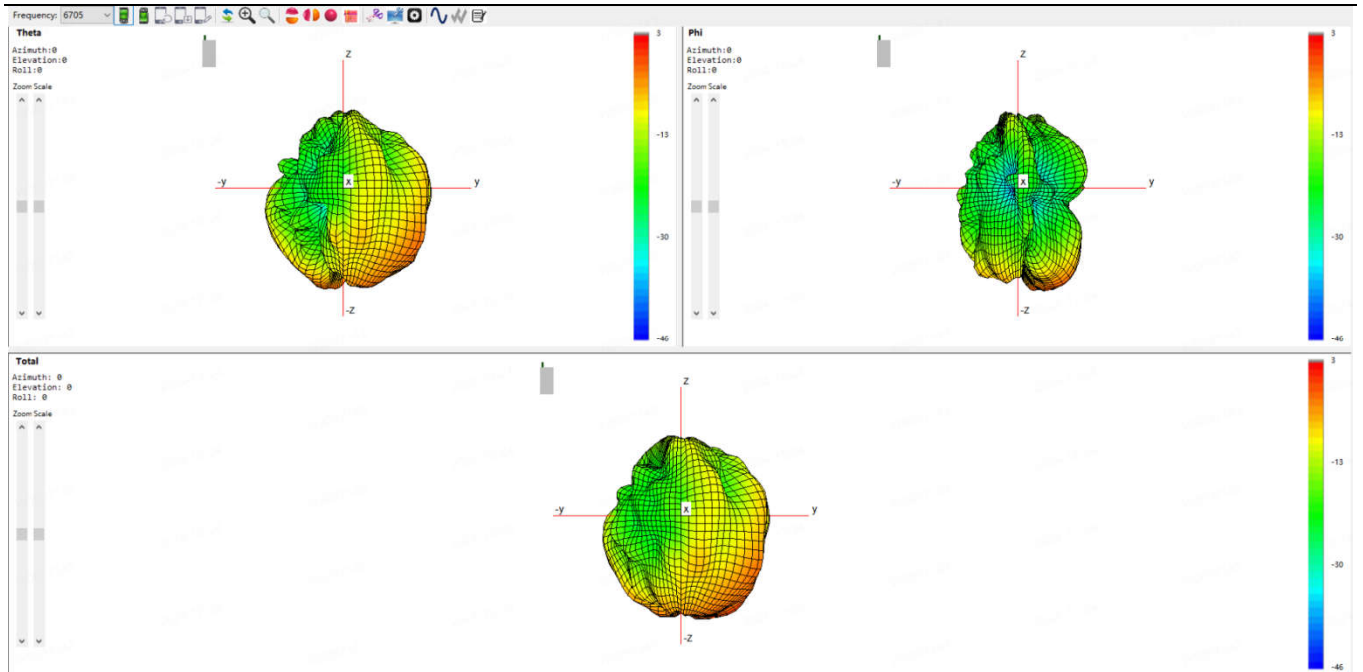
WIFI 5G (5200 MHz)



WIFI 6G (6475 MHz)



WIFI 6G (6700 MHz)



WIFI 6G (7000 MHz)

