

90mm

145mm



MINI PC
USER MANUAL

CAUTIONS

Your Mini PC is designed and tested to meet the latest standards of safety for information technology equipment. However, to ensure your safety, it is important that you read the following safety instructions.

Setting up your system

- Read and follow all instructions in the documentation before you operate your system.
- Do not use this product near water or a heated source.
- Set up the system on a stable surface.
- Openings on the chassis are for ventilation. Do not block or cover these openings. Make sure you leave plenty of space around the system for ventilation. Never insert objects of any kind into the ventilation openings.
- Use this product in environments with ambient temperatures between 0 °C and 35 °C.
- If you use an extension cord, make sure that the total ampere rating of the devices plugged into the extension cord does not exceed its ampere rating.
- This equipment should be installed and operated with a minimum distance of 20cm between the radiator and your body.

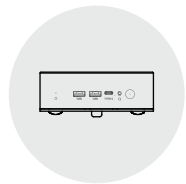
Care during use

- Do not walk on the power cord or allow anything to rest on it.
- Do not spill water or any other liquids on your system.
- When the system is turned off a small amount of electrical current still flows.
Always unplug the power cord from the power outlets before cleaning the system.
- If you encounter the following technical problems with the product, unplug the power cord and contact a qualified service technician or your retailer.
 - The power cord or plug is damaged.
 - Liquid has been spilled into the system.
 - The system does not function properly even if you follow the operating instructions.
 - The system was dropped or the cabinet is damaged.
 - The system performance changes.

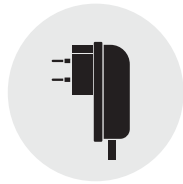
Lithium-Ion Battery Warning

CAUTION: Danger of explosion if the battery is incorrectly replaced. Replace only with the same or equivalent type recommended by the manufacturer.
Dispose of used batteries according to the manufacturer's instructions.

Package Contents



Mini computer

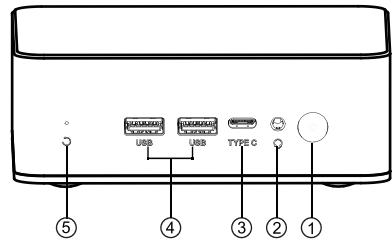
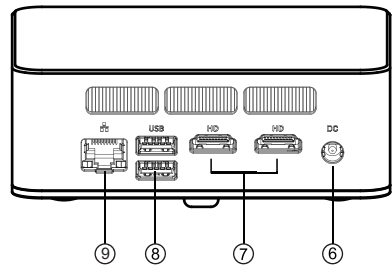


Adapter



User Manual

Know Your Mini PC



- | | | | |
|-----------------|----------------|-----------|-----------|
| 1. Power Button | 2. Audio Jack | 3. Type-C | 4. USB3.0 |
| 5. Reset Button | 6. Power Input | 7. HDMI | 8. USB3.0 |
| 9. LAN | | | |

Getting started

Connect the AC power adapter to your Mini PC:

1. Connect the DC power connector into your Mini PC's power (DC)
2. Plug the AC power adapter into a 100V~240V power source.

NOTE:

The power adapter may vary in appearance, depending on models and your region.

Connect a display monitor to your Mini PC:

Connect one end of an HDMI cable to an external display, and the other end of the cable to your Mini PC's HDMI port.

Connect a keyboard and mouse to your Mini PC:

You can connect generally any USB keyboard and mouse to your Mini PC.

You can also connect a USB dongle for a wireless keyboard and mouse set.

Turn on your Mini PC

Press the power button to turn on your Mini PC

Turning your Mini PC off

If your Mini PC is unresponsive, press and hold the power button for at least four (4) seconds until your Mini PC turns off.

Enter the BIOS Setup

WARNING!

BIOS (Basic Input and Output System) stores system hardware settings that are needed for system startup in the Mini PC.

In normal circumstances, the default BIOS settings apply to most conditions to ensure optimal performance.

Do not change the default BIOS settings except in the following circumstances:

- An error message appears on the screen during the system bootup and requests you to run the BIOS Setup.
- You have installed a new system component that requires further BIOS settings or updates

Inappropriate BIOS settings may result to instability or boot failure.

We strongly recommend that you change the BIOS settings only with the help of trained service personnel.

Load default BIOS settings

Enter the BIOS by pressing <F2> on the POST screen

Enter Fast Boot by pressing <F12> on the POST screen

WARNING

This equipment is not suitable for use in locations where children are likely to be present.

The Warranty does not apply to the products that have been disassembled by users

Each Mini PC has its unique SN code, which is at the bottom of the product.

When you need our after-sales support, please provide us with SN code to ensure that you could enjoy our quick and accurate service.

EC Conformity Statement



FCC Caution:

This device complies with Part 15 of the FCC Rules. Operation is subject to the following two conditions: (1) This device may not cause harmful interference, and (2) this device must accept any interference received, including interference that may cause undesired operation.

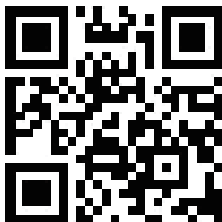
2012/19/EU (WEEE directive): Products marked with this symbol cannot be disposed of as unsorted municipal waste in the European Union. For proper recycling, return this product to your local supplier upon the purchase of equivalent new equipment, or dispose of it at designated collection points. For more information see: www.recyclthis.info

2006/66/EC (battery directive): This product contains a battery that cannot be disposed of as unsorted municipal waste in the European Union. See the product documentation for specific battery information. The battery is marked with this symbol, which may include lettering to indicate cadmium (Cd), lead (Pb), or mercury (Hg). For proper recycling, return the battery to your supplier or to a designated collection point. For more information see: www.recyclthis.info.

Warranty information

The MPL1 is covered for a period of 2 years from the date the product was sold to an end-user for the first time, confirmed by the proof of purchase issued by the first retailer. During the warranty period, Proline or a Proline authorised service center will repair defects in materials and workmanship that result in product failure during normal usage free of charge and in a commercially reasonable time by either repairing or replacing your product at its option. If Proline replaces the product, the replacement product will be subject to your rights set forth in this warranty for the remaining warranty period of the original product and the replacement product may be a refurbished product. The warranty is not valid if the product has been disassembled, modified or repaired without Proline's authorisation. Damage caused by neglect, either intentional or accidental, is not covered by warranty. Examples not covered by warranty include but are not limited to use outside operating specifications, a cracked or broken screen, cracked or damaged housing or cover, damaged or missing buttons, damaged ports or connectors, damage due to power surge or use of an incorrect power supply and water damage [as evidenced by inspection of the internal liquid contact indicator).

For warranty support or repair, please contact Customer Care line on 855-216-7257 email at CSR@nimopc.com Website: www.nimopc.com



NIMO Support

FCC Warning:

This equipment has been tested and found to comply with the limits for a Class B digital device, pursuant to part 15 of the FCC Rules. These limits are designed to provide reasonable protection against harmful interference in a residential installation. This equipment generates, uses and can radiate radio frequency energy and, if not installed and used in accordance with the instructions, may cause harmful interference to radio communications. However, there is no guarantee that interference will not occur in a particular installation. If this equipment does cause harmful interference to radio or television reception, which can be determined by turning the equipment off and on, the user is encouraged to try to correct the interference by one or more of the following measures:

- Reorient or relocate the receiving antenna.
- Increase the separation between the equipment and receiver.
- Connect the equipment into an outlet on a circuit different from that to which the receiver is connected.
- Consult the dealer or an experienced radio/TV technician for help.

Caution: Any changes or modifications to this device not explicitly approved by manufacturer could void your authority to operate this equipment.

This device complies with part 15 of the FCC Rules. Operation is subject to the following two conditions:

(1) This device may not cause harmful interference, and (2) this device must accept any interference received, including interference that may cause undesired operation.

This equipment complies with FCC radiation exposure limits set forth for an uncontrolled environment. This equipment should be installed and operated with minimum distance 20cm between the radiator and your body.