

Antenna

The Most Appropriate Antenna for Your Design!

Customer : YAMAHA

Specification for Approval
Dipole antenna and RF Cable

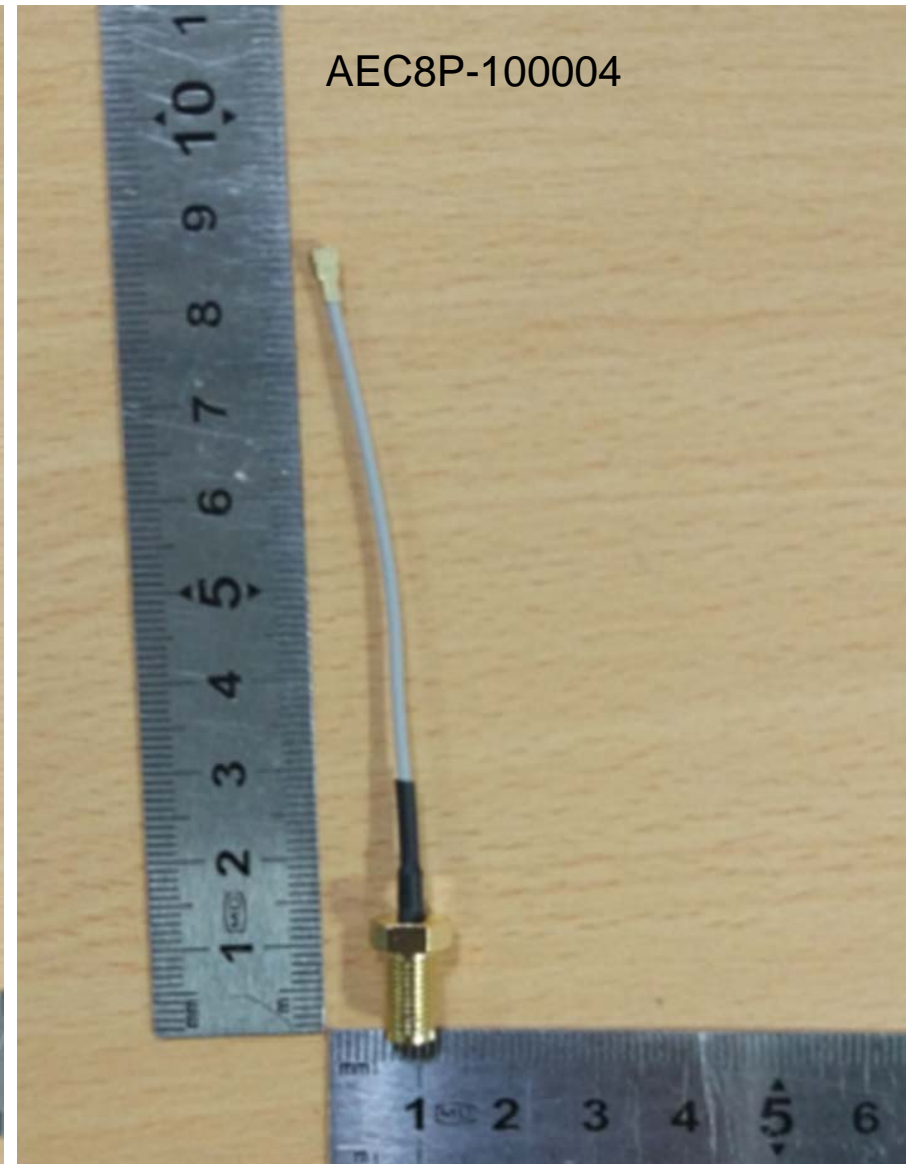
ADVANCED-CONNECTEK INC.
Wireless Communications BU.
2017/6/22



Content

1. Antenna and Cable Description
2. Technical Specifications
3. Assembly Drawing
4. Performance Data

1. Antenna and Cable Description



2. Technical Specifications

Antenna

Application Band	2400MHz~2500MHz
	5150MHz~5850MHz
Operating temperature range	-20~+80°C
S.W.R.	<2.0
Antenna Peak Gain without RF Cable	2.4Ghz band 3.24 dBi Max
	5.0Ghz band 4.54 dBi Max
Efficiency	>50%
Impedance	50 Ohm
Polarization / Azimuth	Linear / Omni-directional
Coaxial Cable	50 Ohm / O.D 1.78mm

2. Technical Specifications

RF Cable

Frequency	1~6GHz
Operating temperature range	-20~+80°C
Insertionloss (500mm)	2.4GHz~2.5GHz 1.34dB Min
	5.15~5.85GHz 1.93dB Min
Coaxial Connector	50 Ohm RPSMA-BJ-1.37AS(Au)
	I-PEX MHF1.37

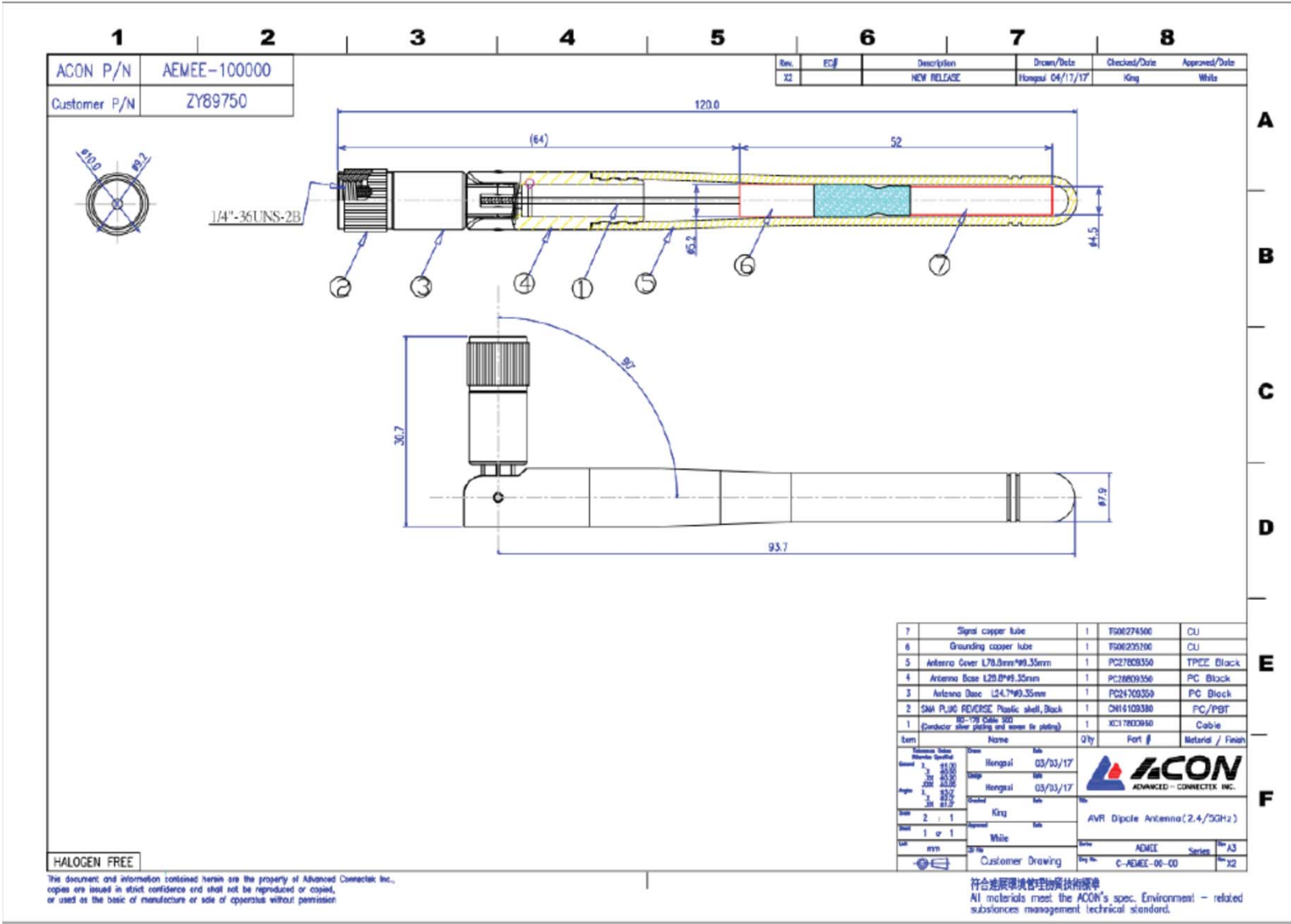
2. Technical Specifications

Peak GAIN Specification (Cable Color Gray)	2.4GHz Band GAIN(dBi) MAX	5GHz Band GAIN(dBi) MAX
Antenna without RF CABLE AEMEE-10000	3.24	4.54
Antenna with 30mm RF CABLE AEMEE-10000+AEC8P-100000	3.16	4.42
Antenna with 50mm RF CABLE AEMEE-10000+AEC8P-100002	3.11	4.35
Antenna with 70mm RF CABLE AEMEE-10000+AEC8P-100004	3.05	4.27
Antenna with 90mm RF CABLE AEMEE-10000+AEC8P-100006	3.00	4.19
Antenna with 120mm RF CABLE AEMEE-10000+AEC8P-100008	2.92	4.08
Antenna with 160mm RF CABLE AEMEE-10000+AEC8P-100010	2.81	3.92
Antenna with 200mm RF CABLE AEMEE-10000+AEC8P-100012	2.70	3.77
Antenna with 240mm RF CABLE AEMEE-10000+AEC8P-100014	2.60	3.61
Antenna with 280mm RF CABLE AEMEE-10000+AEC8P-100016	2.49	3.46
Antenna with 320mm RF CABLE AEMEE-10000+AEC8P-100018	2.38	3.30
Antenna with 360mm RF CABLE AEMEE-10000+AEC8P-100020	2.28	3.15
Antenna with 400mm RF CABLE AEMEE-10000+AEC8P-100022	2.17	3.00
Antenna with 450mm RF CABLE AEMEE-10000+AEC8P-100024	2.03	2.80
Antenna with 500mm RF CABLE AEMEE-10000+AEC8P-100026	1.90	2.61

2. Technical Specifications

Peak GAIN Spefication (Cable Color Black)	2.4GHz Band GAIN(dBi) MAX	5GHz Band GAIN(dBi) MAX
Antenna without RF CABLE AEMEE-10000	3.24	4.54
Antenna with 30mm RF CABLE AEMEE-10000+AEC8P-100001	3.16	4.42
Antenna with 50mm RF CABLE AEMEE-10000+AEC8P-100003	3.11	4.35
Antenna with 70mm RF CABLE AEMEE-10000+AEC8P-100005	3.05	4.27
Antenna with 90mm RF CABLE AEMEE-10000+AEC8P-100007	3.00	4.19
Antenna with 120mm RF CABLE AEMEE-10000+AEC8P-100009	2.92	4.08
Antenna with 160mm RF CABLE AEMEE-10000+AEC8P-100011	2.81	3.92
Antenna with 200mm RF CABLE AEMEE-10000+AEC8P-100013	2.70	3.77
Antenna with 240mm RF CABLE AEMEE-10000+AEC8P-100015	2.60	3.61
Antenna with 280mm RF CABLE AEMEE-10000+AEC8P-100017	2.49	3.46
Antenna with 320mm RF CABLE AEMEE-10000+AEC8P-100019	2.38	3.30
Antenna with 360mm RF CABLE AEMEE-10000+AEC8P-100021	2.28	3.15
Antenna with 400mm RF CABLE AEMEE-10000+AEC8P-100023	2.17	3.00
Antenna with 450mm RF CABLE AEMEE-10000+AEC8P-100025	2.03	2.80
Antenna with 500mm RF CABLE AEMEE-10000+AEC8P-100027	1.90	2.61

3.Assembly Drawing



3.Assembly Drawing

1	2	3	4	5	6	7	8
ACON P/N AEC8P-100000(代)				Rev. E01		Description	
Customer P/N ZY90020(代)				REV RELEASE		Drawn/Date	
						Checked/Date	
						Approved/Date	
						Arthur	

Customer P/N	P/N	DIM.A
ZY90160	AEC8P-100001	30.0
ZY90170	AEC8P-100003	50.0
ZY90180	AEC8P-100005	70.0
ZY90190	AEC8P-100007	90.0
ZY90200	AEC8P-100009	120.0
ZY90210	AEC8P-100011	160.0
ZY90220	AEC8P-100013	200.0
ZY90230	AEC8P-100015	240.0
ZY90240	AEC8P-100017	280.0
ZY90250	AEC8P-100019	320.0
ZY90260	AEC8P-100021	360.0
ZY90270	AEC8P-100023	400.0
ZY90280	AEC8P-100025	450.0
ZY90290	AEC8P-100027	500.0

1/4-36UNF-2A

Heat shrink Tube(Black) 1.37 I-PEX P/N 20351-112R-37
 端子开口方向和SMA制D面出同一侧面 公差±45°
 Connector cup mouth direction
 and SMA section D surface on the same side
 Tolerance +/-45度

1/4-36UNF-2B

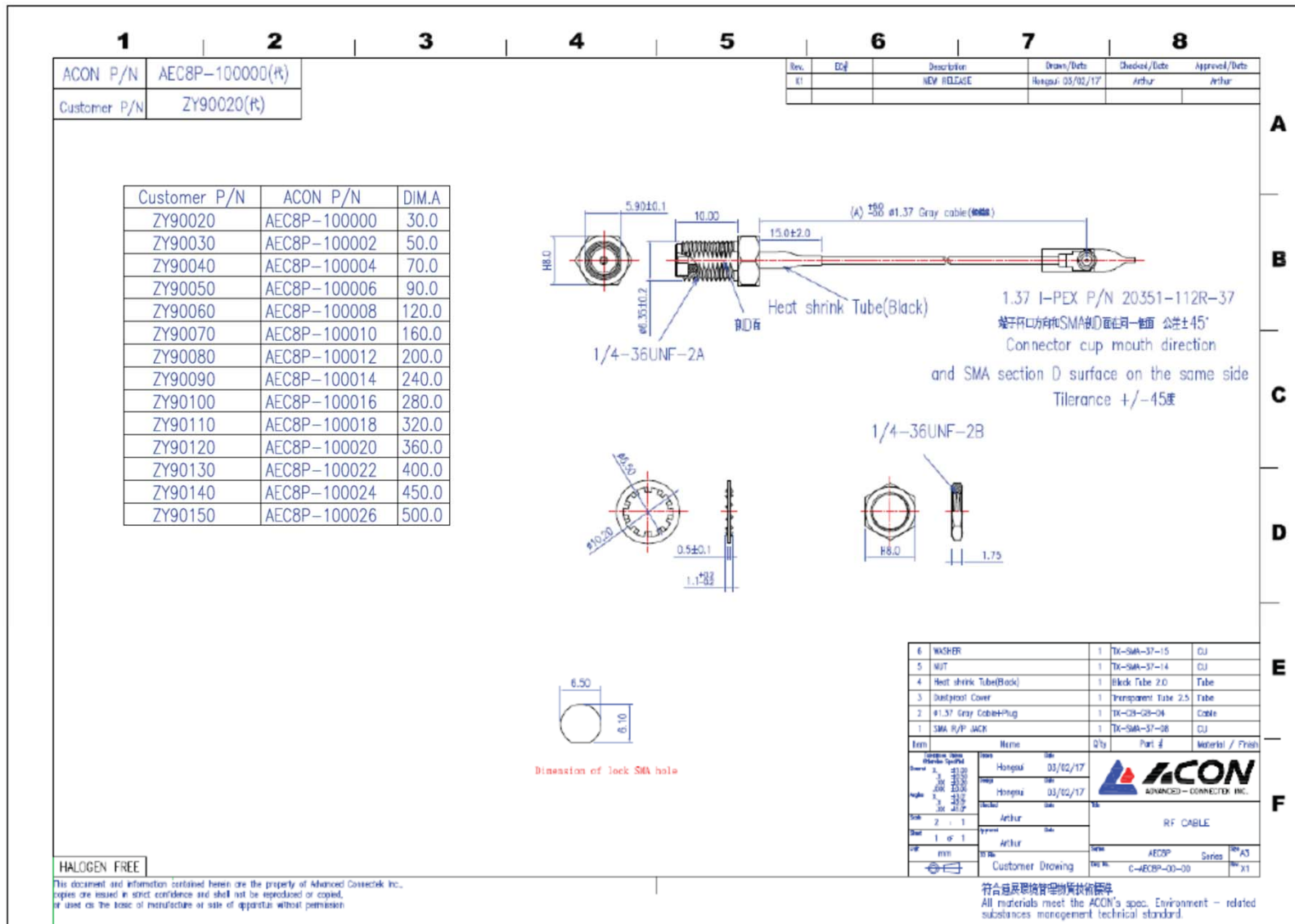
Dimension of lock SMA hole

6	WASHER	1	TX-SMA-37-15	CU
5	NUT	1	TX-SMA-37-14	CU
4	Heat shrink Tube(Black)	1	Black Tube 2.0	Tube
3	Dustproof Cover	1	Transparent Tube 2.5	Tube
2	#1.37 Black Cable+Flag	1	TX-CB-88-95	Cable
1	SMA R/P JACK	1	TX-SMA-37-08	CU

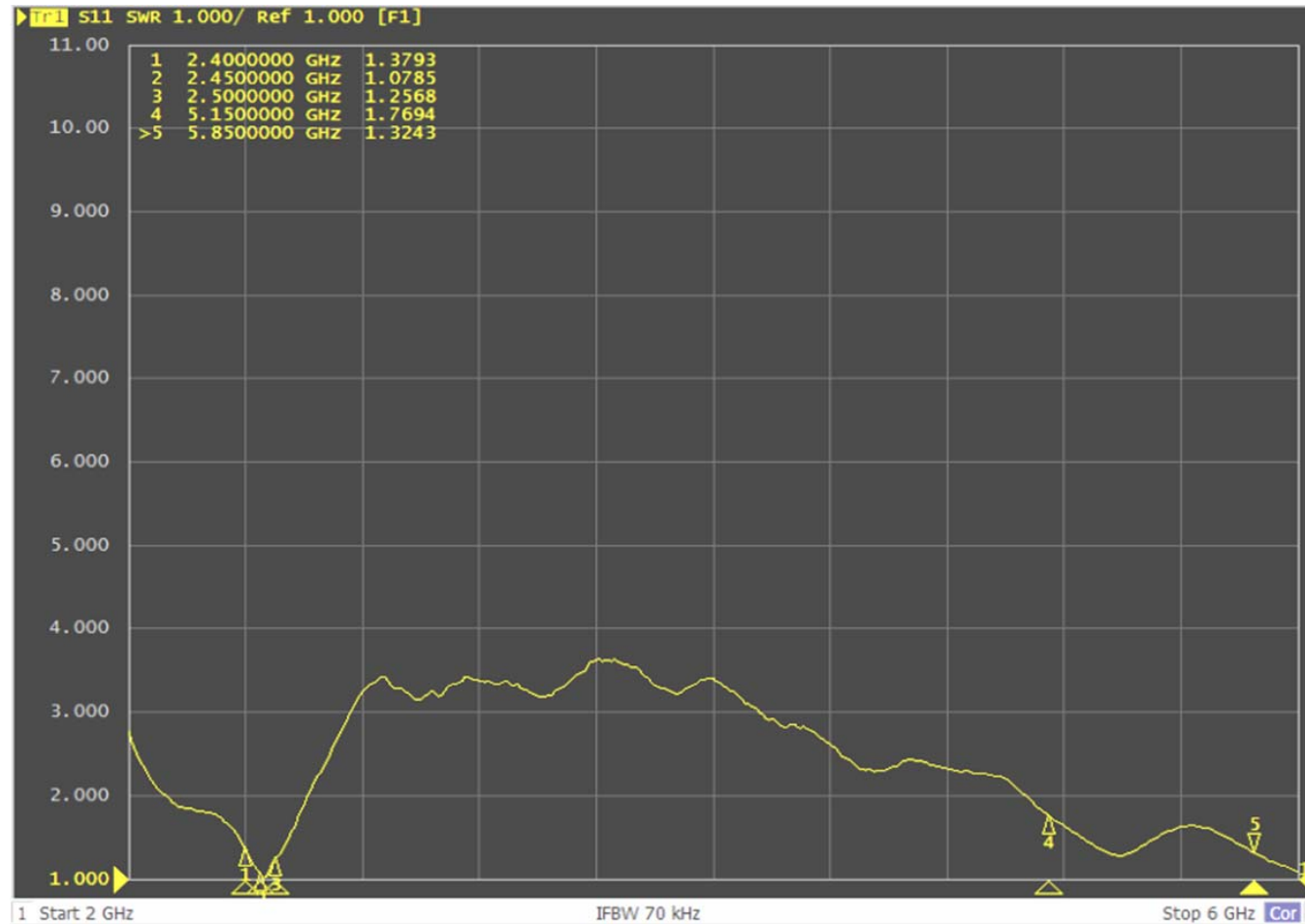
Drawn	Arthur	Date	01/02/17
Checked	Arthur	Date	01/02/17
Approved	Arthur	Date	
Scale	2 : 1	Sheet	1 of 1
Customer Drawing		Part No.	AEC8P Series 03 A3
		Part No.	C-AEC8P-00-01 Rev X1

符合RoHS环保标准
 All materials meet the ACON's spec. Environment - related substances management technical standard.

3.Assembly Drawing

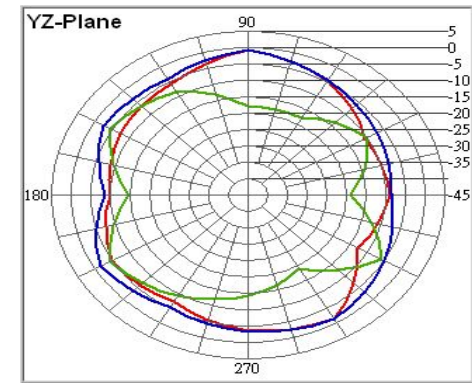
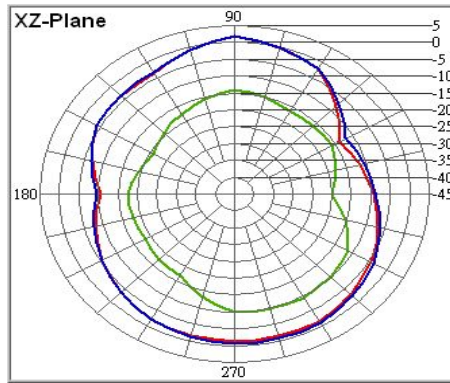
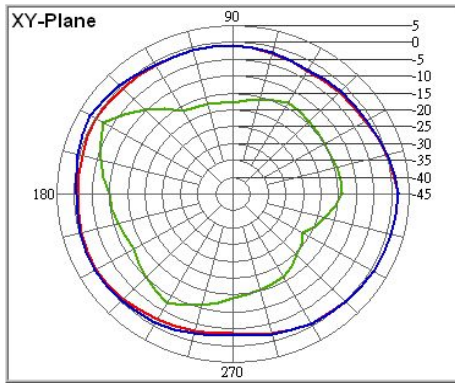


4. Performance Data : S.W.R (Without RF Cable)



4.Performance Data : Pattern (Without RF Cable)

2450MHz



5350MHz

