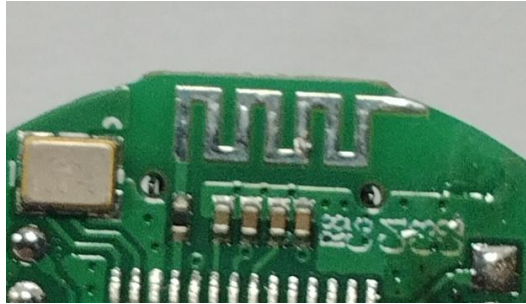
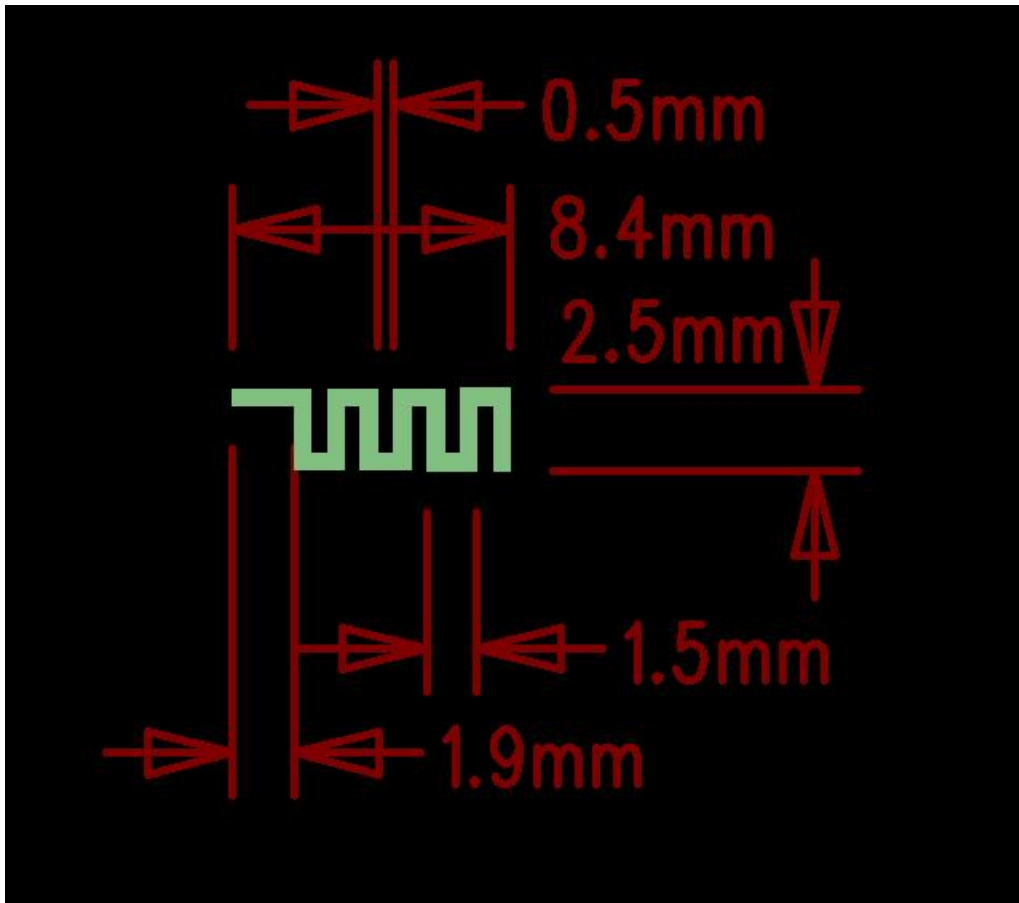


# PCB ANTENNA

---



## 1. Measurement of PCB antenna :

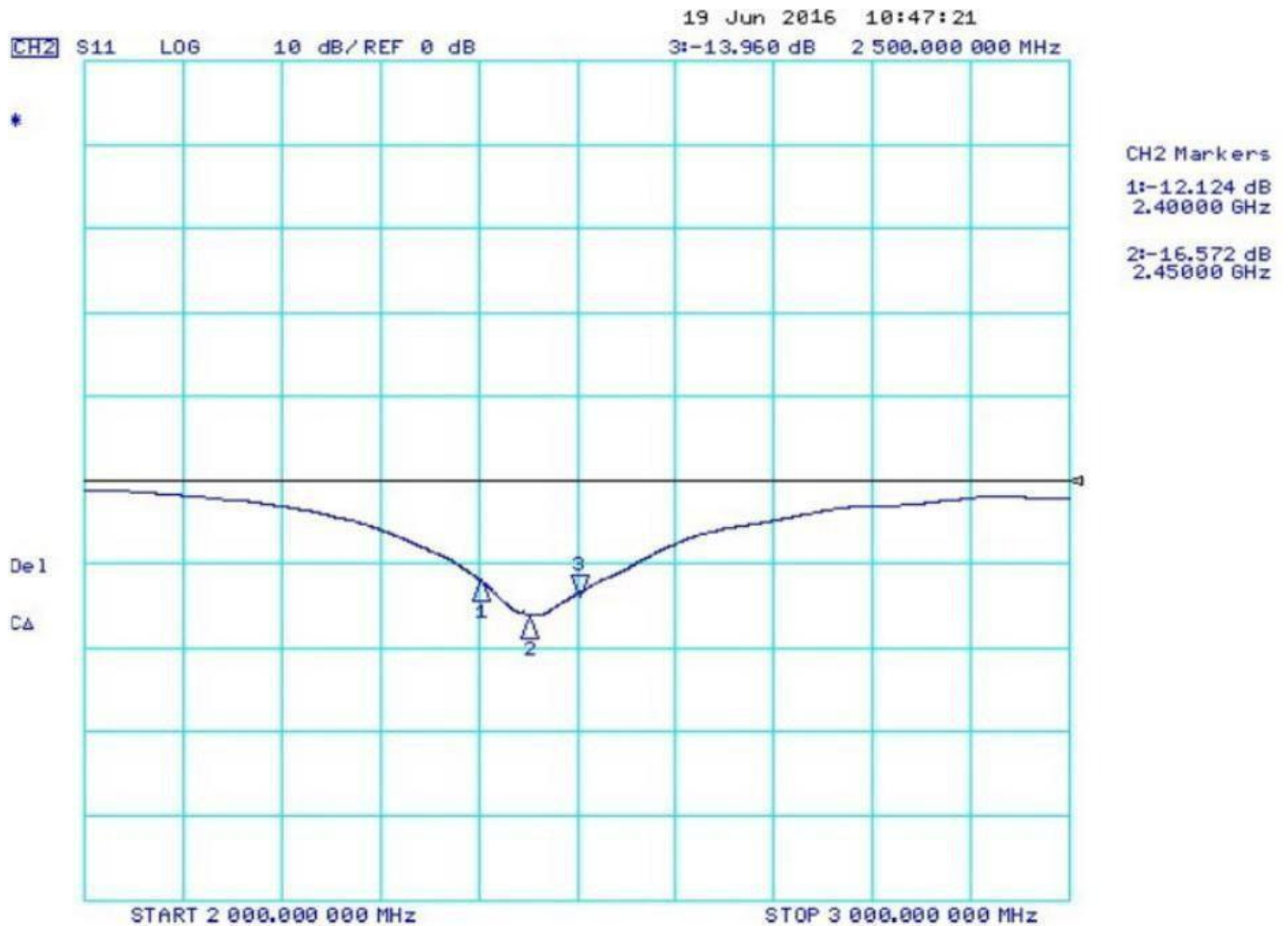


## 2. Equipment used :



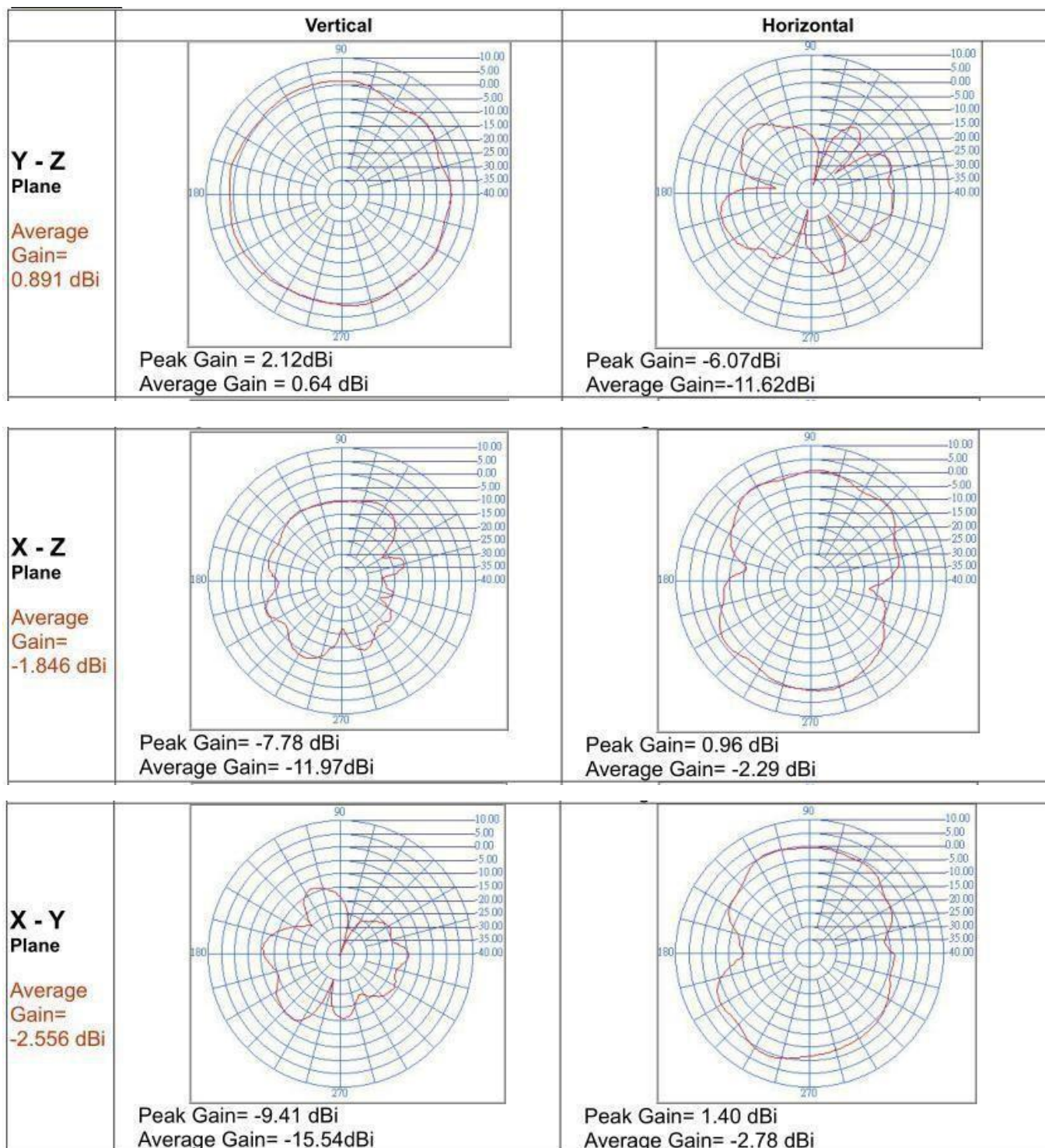
### 3. Antenna Parameter :

Central frequency 2.45GHz



### 4. RADIATION PATTERN

radiation pattern and gain were dependent on measurement board design, the specification of antenna was measured based on the PCB size.



5. Impedance value : close to 50 ohm





6. SWT Value:1.2

