



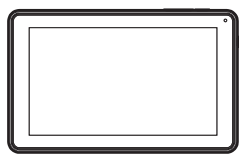
In the box

Buttons, ports & hardware



9" Tablet + Keyboard Case

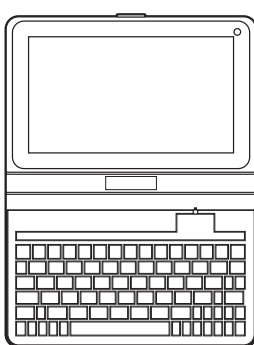
User Guide Model : L9



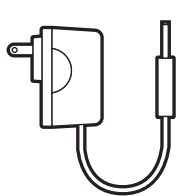
9" Tablet



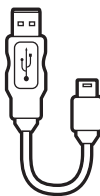
User Guide



Keyboard Case



AC Adaptor



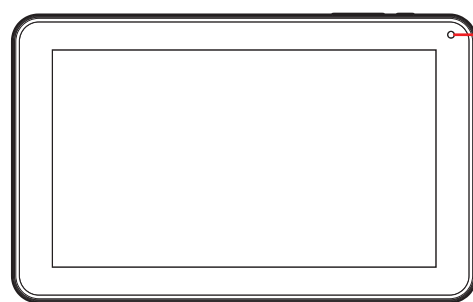
USB Cable



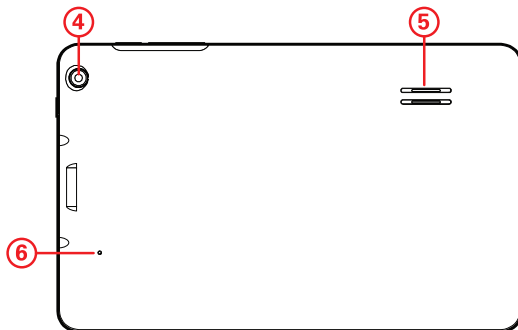
Headphones



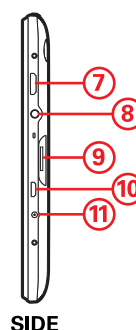
TOP



FRONT



BACK



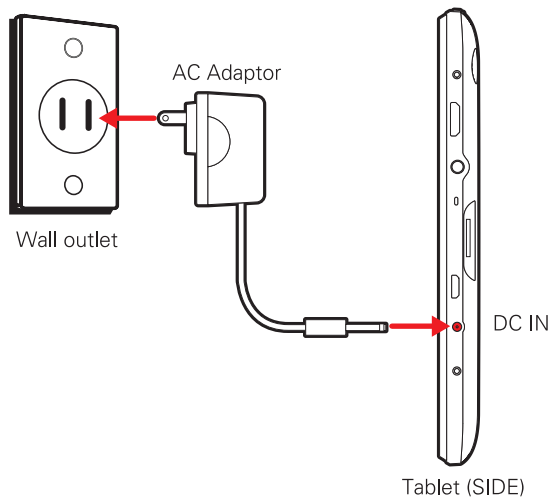
SIDE

- 1 POWER
- 2 Volume buttons
- 3 Front camera
- 4 Rear camera
- 5 Speaker
- 6 Reset
- 7 HDMI port
- 8 Headphone jack
- 9 Micro SD card slot
- 10 Micro USB port
- 11 DC input

Charging the tablet

Charging the battery:

Connect the tablet to a wall outlet using the included AC adaptor as shown below.



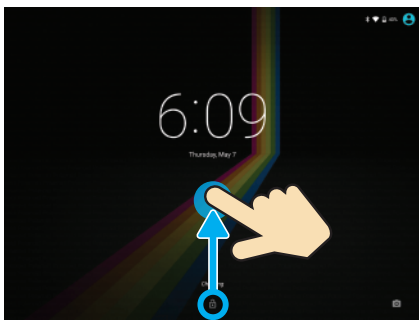
Turning on the tablet

Press and hold the **POWER** button until the startup screen appears.



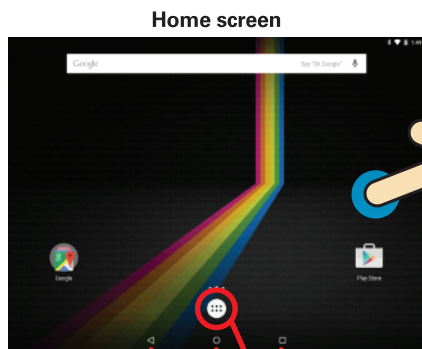
Unlock the tablet

Briefly press the **POWER** button, and swipe up the "Lock icon".

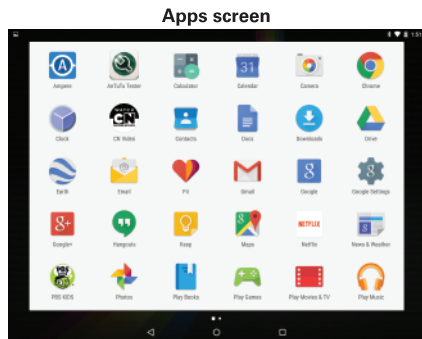


Lock screen

Home screen



Previous Home Multi-task



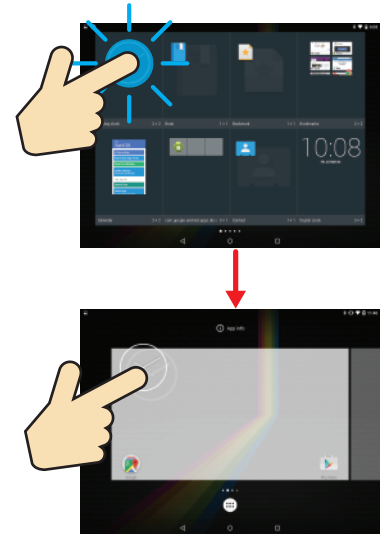
Apps screen

Widgets

To add a widget, press and hold anywhere on the home screen. Select the "Widgets" option as shown below.



Press and hold widgets to place them on the home screen as shown below.



Battery Tips:

- Turn off Wi-Fi when it's not in use.
- Lock the tablet (the display is off) to shorten charging time.
- To optimize battery time and performance, adjust the "Brightness" and "Screen timeout" options in the Settings.



Lock the tablet (standby)

Briefly press the **POWER** button. (Lock the tablet to conserve the battery).

Power off the tablet

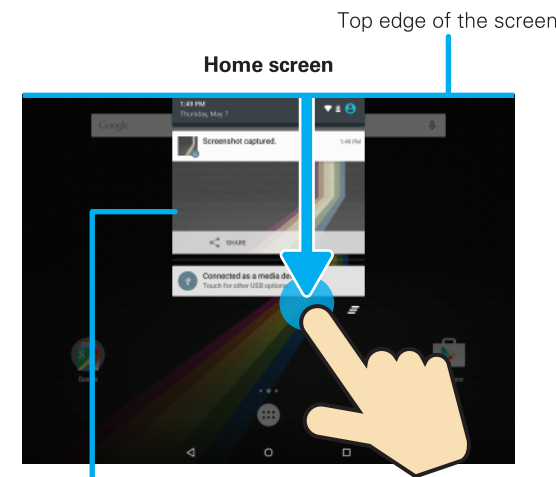
Press & hold the **POWER** button until the "Power off" options appear.

Notifications and Quick Settings

Swipe down from the top edge of the screen to display the Notifications and Quick Settings panel.

Notifications

You can browse and reply to your emails, check software updates, reminders and more on the Notifications panel.

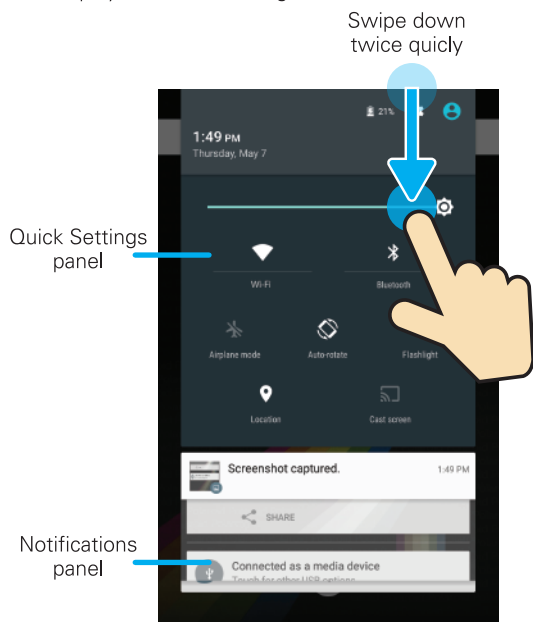


Notifications panel

Quick Settings

Easily turn on/off Wi-Fi, Bluetooth, Airplane mode and other settings.

Swipe down **twice** quickly from the top edge of the screen to display the Quick Settings.



Quick Settings panel

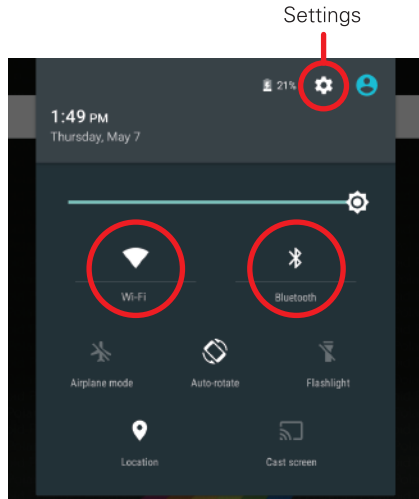
Notifications panel

Connecting

Wi-Fi and Bluetooth®

To turn on/off Wi-Fi or Bluetooth®, simply tap the icons.

To access more settings options, select the **Settings** icon.



Google Play™

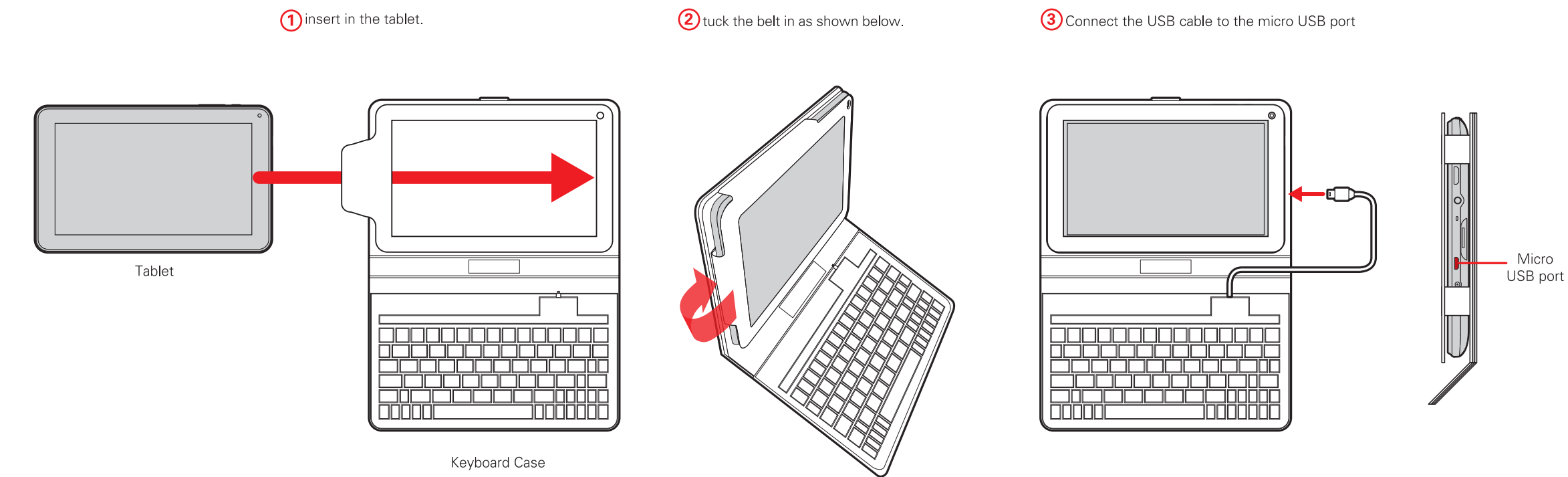


Google Play™ is a digital content experience from Google where you can find and enjoy your favorite music, movies, TV shows, books, and Android™ apps and games. It's your entertainment hub: you can access it from the web or from your Android device, and all your content is instantly available across your devices.



FRONT

Keyboard Case

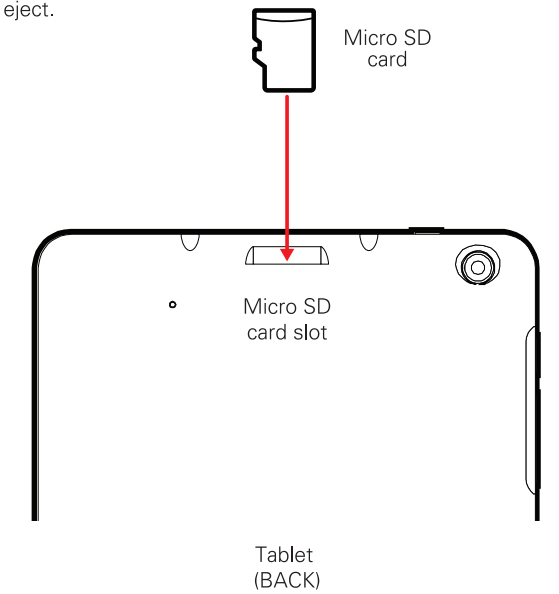


Expandable storage

To expand the storage of the tablet, you will need to insert a Micro SD card. The tablet supports Micro SD cards up to 64GB (not included).

To install a Micro SD card into the tablet, insert the card as shown below into the card slot until it clicks and locks into place.

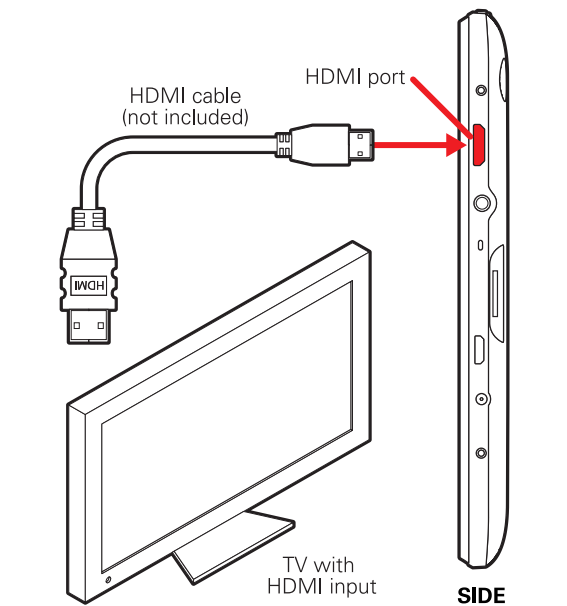
To remove the Micro SD card, gently press it inward to eject.



HDMI®

You can connect the tablet to an HD display with a mini HDMI to HDMI cable (not included).

- To connect:**
1. Connect the mini end of the HDMI cable to the HDMI port of the tablet.
 2. Connect the other end of the HDMI cable to the HDMI port of the TV or display.
 3. Select the correct input on your TV.
 4. The tablet display is now shown on your TV or display.



Specifications

- 9.0" (1024 x 600) display
- Android 5.0, Lollipop
- Quad-Core processor
- 1GB RAM
- 16GB internal storage* (supports up to 64GB additional storage)
- 2MP front camera + 5MP rear camera
- Wi-Fi 802.11 b/g/n
- Bluetooth 4.0
- 4,500 mAh battery
- HD video output (Connect to TVs or monitors)

*Actual internal memory may vary depending on the operating system of the device and the preloaded apps.

Legal information

FCC Part 15:
This equipment has been tested and found to comply with the requirements for a Class B digital device under Part 15 of the Federal Communications Commission (FCC) rules. These requirements are intended to provide reasonable protection against harmful interference in a residential installation. This equipment generates, uses and can radiate radio frequency energy and, if not installed and used in accordance with the instructions, may cause harmful interference to radio communications. However, there is no guarantee that interference will not occur in a particular installation. If this equipment does cause harmful interference to radio or television reception, which can be determined by turning the equipment off and on, the user is encouraged to try to correct the interference by one or more of the following measures:

- Re-orient or relocate the receiving antenna.
- Increase the separation between the equipment and receiver.
- Connect the equipment into an outlet on a circuit different from that to which the receiver is connected.
- Consult the dealer or an experienced radio/TV technician for help.

Do not attempt to repair or modify this equipment.
Warning: Changes or modifications to this equipment not expressly approved by the party responsible for compliance could void the user's authority to operate the equipment.
"This device complies with Part 15 of the FCC Rules. Operation is subject to the following two conditions:

- (1) this device may not cause harmful interference, and
- (2) this device must accept any interference received, including interference that may cause undesired operation."

Shielded USB cables must be used with this unit to ensure compliance with the Class B FCC limits.

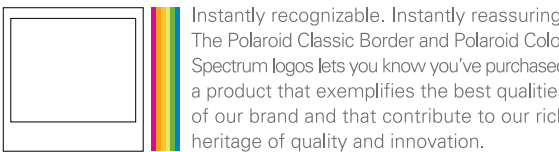
Limited warranty

PLR IP Holdings, LLC, its licensees and affiliates, fully support all electronic waste initiatives. As responsible stewards of the environment, and to avoid violating established laws, you should properly dispose of this product in compliance with all applicable regulations, directives or other governances in the area where you reside. Please check with local authorities or the retailer where you purchased this product to determine a location where you can appropriately dispose of the product.

You may also go to www.polaroid.com and reference **Social Responsibility** <http://www.polaroid.com/social-responsibility> to learn more about the specific laws in your area and to locate a collection facility near your home.

If your electronic device has internal memory on which personal or other confidential data may be stored, you may want to perform a data sanitization process before you dispose of your device to assure another party cannot access your personal data. Data sanitization varies by the type of product and its software, and you may want to research the best sanitization process for your device before disposal. You may also check with your local recycling facility to determine their data sanitization procedures during the recycling process.

Polaroid, Polaroid & Pixel, Polaroid Color Spectrum and Polaroid Classic Border Logo are trademarks of PLR IP Holdings, LLC, used under license. PLR IP Holdings, LLC does not manufacture this product or provide any Manufacturer's Warranty or support. www.polaroid.com



LIMITED WARRANTY TO ORIGINAL CONSUMER

This Product (including any accessories included in the original packaging) as supplied and distributed new by an authorized retailer is warranted by AIT, Inc. (AIT) to the original consumer purchaser against defects in materials and workmanship ("Warranty") as follows:

Product Type : Tablet Territory : United States / Canada
Parts Warranty : 1 Year Labor Warranty : 1 Year

Customer Support:
☎ **1-877-768-8481** (Toll Free)
Monday - Friday: 8AM - 10PM (EST)
🌐 www.southerntelecom.com
(click on "Product Support")

TO OBTAIN WARRANTY SERVICE:
• Call the Customer Support number located below, or go to our website portal to receive an SRO number. • Provide proof of the date of purchase within the package (Dated bill of sale). • Prepay all shipping costs to the authorized service center, and remember to insure your return. • Include a return shipping address (no P.O. Boxes), a telephone contact number, and the defective unit within the package. • Describe the defect or reason you are returning the product.

Your product will be repaired or replaced, at our option, for the same or similar model of equal value if examination by the service center determines this product is defective. Products received damaged as a result of shipping will require you to file a claim with the carrier.

The shipping address of the authorized service center is:

📍 **Southern Telecom, Inc.**
Attention: Customer Service (2nd Floor)
14-C 53rd Street
Brooklyn, NY 11232

Warranty service not provided

This warranty does not cover damage resulting from accident, misuse, abuse, improper installation or operation, lack of reasonable care, unauthorized modification including software modifications such as the installation of custom firmwares. DISTRIBUTOR FURTHER DISCLAIMS ALL WARRANTIES AFTER THE EXPRESS WARRANTY PERIOD STATED ABOVE. NO OTHER EXPRESS WARRANTY OR GUARANTY GIVEN BY ANY PERSON, FIRM OR ENTITY WITH RESPECT TO THE PRODUCT SHALL BE BINDING ON DISTRIBUTOR, REPAIR, REPLACEMENT, OR REFUND OF THE ORIGINAL PURCHASE PRICE - AT DISTRIBUTOR'S SOLE DISCRETION - ARE THE EXCLUSIVE REMEDIES OF THE CONSUMER. IN NO EVENT WILL DISTRIBUTOR, ITS MANUFACTURERS, OR PLR IP HOLDINGS, LLC BE LIABLE FOR ANY INCIDENTAL, DIRECT, INDIRECT, SPECIAL, PUNITIVE OR CONSEQUENTIAL DAMAGES (SUCH AS, BUT NOT LIMITED TO, DAMAGES FOR LOSS OF PROFITS, BUSINESS, SAVINGS, DATA OR RECORDS) CAUSED BY THE USE, MISUSE OR INABILITY TO USE THE PRODUCT. EXCEPT AS STATED HEREIN, NO OTHER WARRANTIES SHALL APPLY. NOTWITHSTANDING THE FOREGOING, CONSUMER'S RECOVERY AGAINST DISTRIBUTOR SHALL NOT EXCEED THE PURCHASE PRICE OF THE PRODUCT SOLD BY DISTRIBUTOR. THIS WARRANTY SHALL NOT EXTEND TO ANYONE OTHER THAN THE ORIGINAL CONSUMER WHO PURCHASED THE PRODUCT AND IS NOT TRANSFERABLE.

NO WARRANTIES, WHETHER EXPRESS OR IMPLIED, INCLUDING, BUT NOT LIMITED TO, ANY IMPLIED WARRANTIES OF MERCHANTABILITY OR FITNESS FOR A PARTICULAR PURPOSE, OTHER THAN THOSE EXPRESSLY DESCRIBED ABOVE SHALL APPLY. DISTRIBUTOR FURTHER DISCLAIMS ALL WARRANTIES AFTER THE EXPRESS WARRANTY PERIOD STATED ABOVE. NO OTHER EXPRESS WARRANTY OR GUARANTY GIVEN BY ANY PERSON, FIRM OR ENTITY WITH RESPECT TO THE PRODUCT SHALL BE BINDING ON DISTRIBUTOR, REPAIR, REPLACEMENT, OR REFUND OF THE ORIGINAL PURCHASE PRICE - AT DISTRIBUTOR'S SOLE DISCRETION - ARE THE EXCLUSIVE REMEDIES OF THE CONSUMER. IN NO EVENT WILL DISTRIBUTOR, ITS MANUFACTURERS, OR PLR IP HOLDINGS, LLC BE LIABLE FOR ANY INCIDENTAL, DIRECT, INDIRECT, SPECIAL, PUNITIVE OR CONSEQUENTIAL DAMAGES (SUCH AS, BUT NOT LIMITED TO, DAMAGES FOR LOSS OF PROFITS, BUSINESS, SAVINGS, DATA OR RECORDS) CAUSED BY THE USE, MISUSE OR INABILITY TO USE THE PRODUCT. EXCEPT AS STATED HEREIN, NO OTHER WARRANTIES SHALL APPLY. NOTWITHSTANDING THE FOREGOING, CONSUMER'S RECOVERY AGAINST DISTRIBUTOR SHALL NOT EXCEED THE PURCHASE PRICE OF THE PRODUCT SOLD BY DISTRIBUTOR. THIS WARRANTY SHALL NOT EXTEND TO ANYONE OTHER THAN THE ORIGINAL CONSUMER WHO PURCHASED THE PRODUCT AND IS NOT TRANSFERABLE.

Some countries, states or provinces do not allow the exclusion or limitation of incidental or consequential damages or allow limitations on warranties, so limitation or exclusions may not apply to you. This warranty gives you specific legal rights, and you may have other rights that vary from state to state or province to province. Contact your authorized retailer to determine if another warranty applies.

Designed by Southern Telecom / Made in China
Distributed by: AIT, Inc. 14-C 53rd Street Brooklyn, NY 11232
© 2015 All Rights Reserved.

The **Bluetooth®** word mark and logos are owned by the Bluetooth SIG, Inc.

Android, Google, Google Play and other marks are trademarks of Google Inc. The Android robot is reproduced or modified from work created and shared by Google and used according to terms described in the Creative Commons 3.0 Attribution License.

All other trademarks and trade names are those of their respective owners.