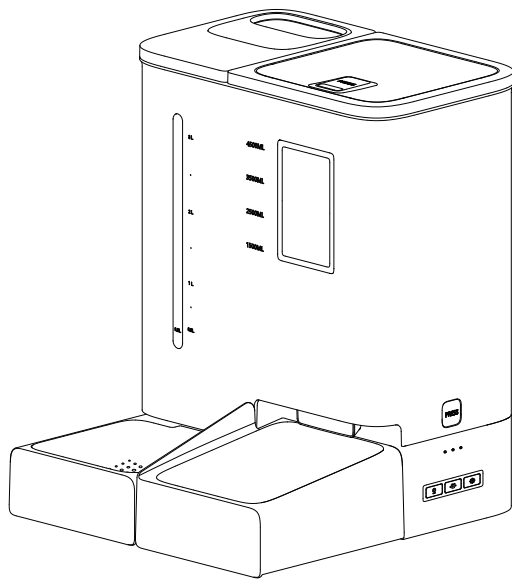


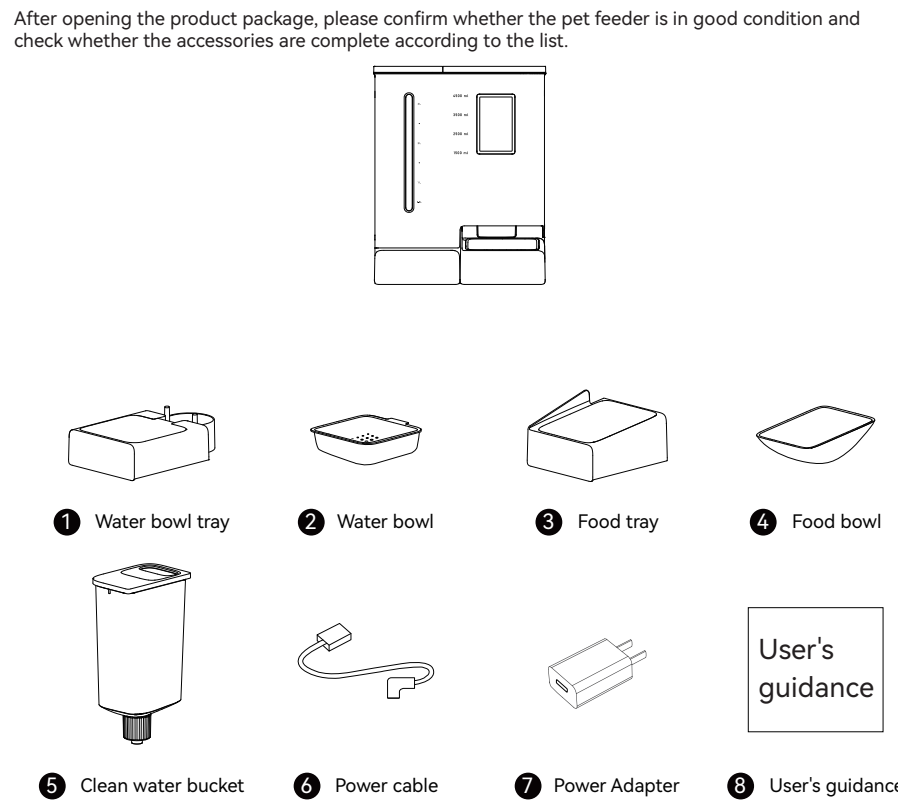
Automatic Pet Feeder
Instruction Manual



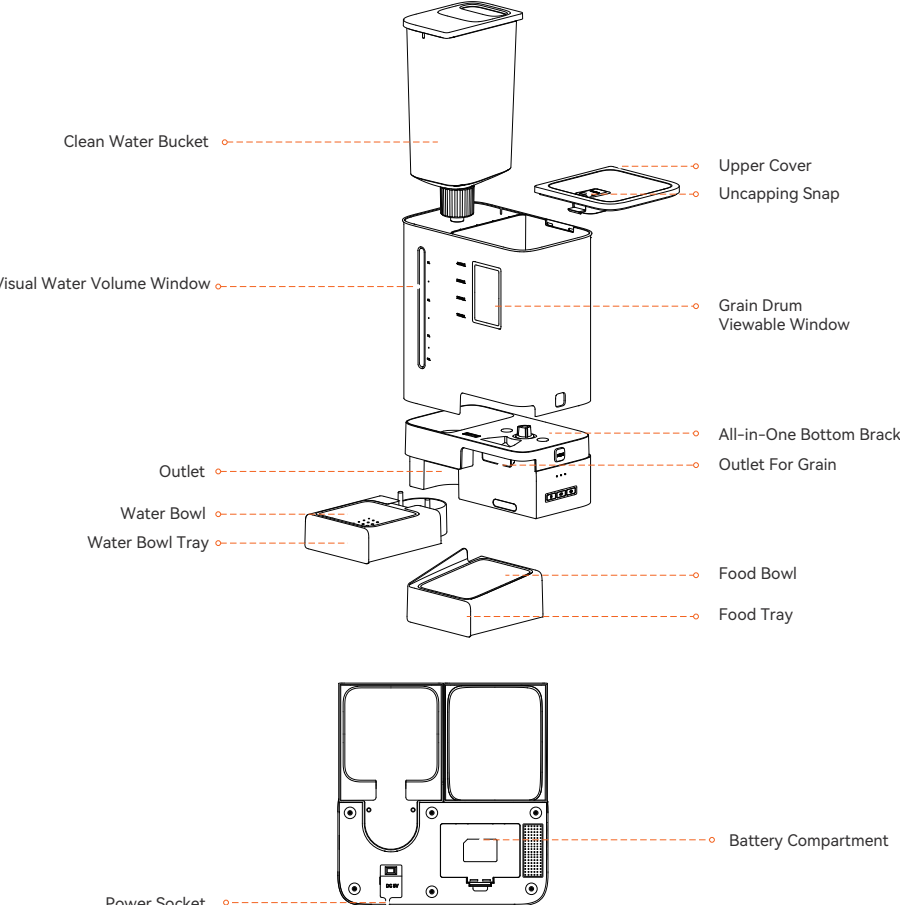
Before using the product,
please read the instructions carefully

- When children use this product, please use it under the supervision of a parent.
- Do not use the product on pets that cannot reach the food bowl or have physical disabilities.
- Do not immerse the base part in water; it will damage the control panel and other electronic components.
- Do not place any foreign objects in the product, or it may cause equipment abnormality or risk of accidental ingestion by pets.
- Do not place wet food or spoiled pet food inside the product.
- Do not disassemble or modify the product by yourself.
- If this product is malfunctioning or has damaged parts, please do not try to repair the feeder by yourself; you should contact your dealer or customer service to solve the problem.
- Be sure to unplug the product when not in use or before cleaning it.
- If the power plug of this product is exposed to moisture, turn off the power at the outlet and do not try to unplug it.

- Please do not allow your pet to chew or swallow any of the accessories. If you are concerned about the power cord, please purchase a wire conduit (hard plastic protector) at a hardware store to protect the cord.
- The normal operating ambient temperature of this equipment is 0°C~40°C. Please do not place the feeder in a place exposed to the sun or where the ambient temperature does not match.
- Please use alkaline D battery for power supply. Rechargeable batteries cannot be used.
- Please check the battery regularly. If traveling for a long time or on a business trip, be sure to replace the battery with a new one.
- Do not use the lid, grain bucket, or food basin to lift the feeder directly. You need to hold the base with both hands to lift and carry it, while keeping the device in an upright position.
- Please use dry food with a pet food size range of 3-10 mm. Avoid food jams or blockage of the food outlet due to oversized food.
- Please carefully read and follow all important instructions listed on the feeder and packaging.



* In order to provide better products, we will make product improvements regularly. If the product pictures are slightly different from the actual product, please refer to the actual product.



Control panel icons: ID, Feeding, Settings.

Recording: Press and hold for 1 second to start recording with one "tick", release to end recording with two "ticks". The maximum length of recording is 10 seconds.

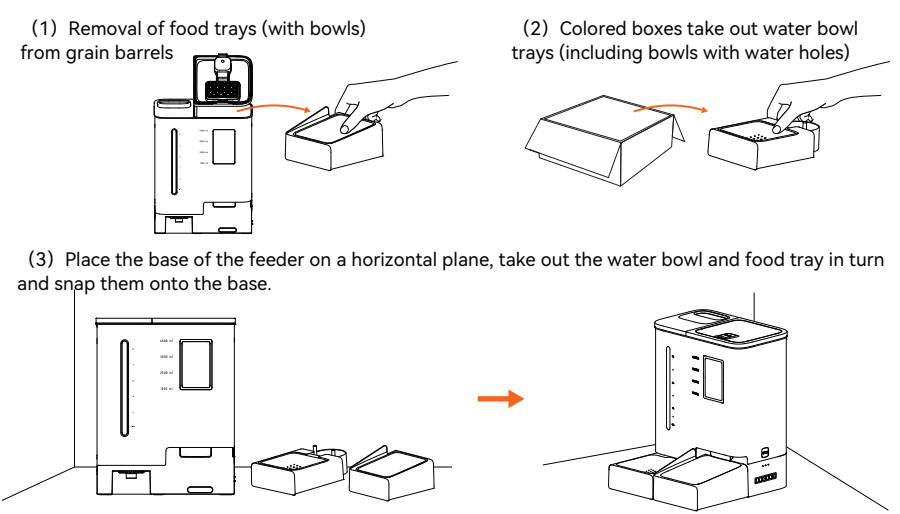
Feeding button: Press it to dispense one serving of food, and it will play 1 time when there is a recording. Press the key for 30 seconds without operation, the key will be locked with a "drop" sound, and press and hold the key again for 3 seconds, the key will be unlocked with two "drops".

Reset: Press and hold the key for 6 seconds to make a "drop" sound, the device will be reset and the network information, feeding records and recording data will be cleared. Under unlocked state, you can press and hold the key [ID] to restore the factory settings; under locked state, any key can not be operated.

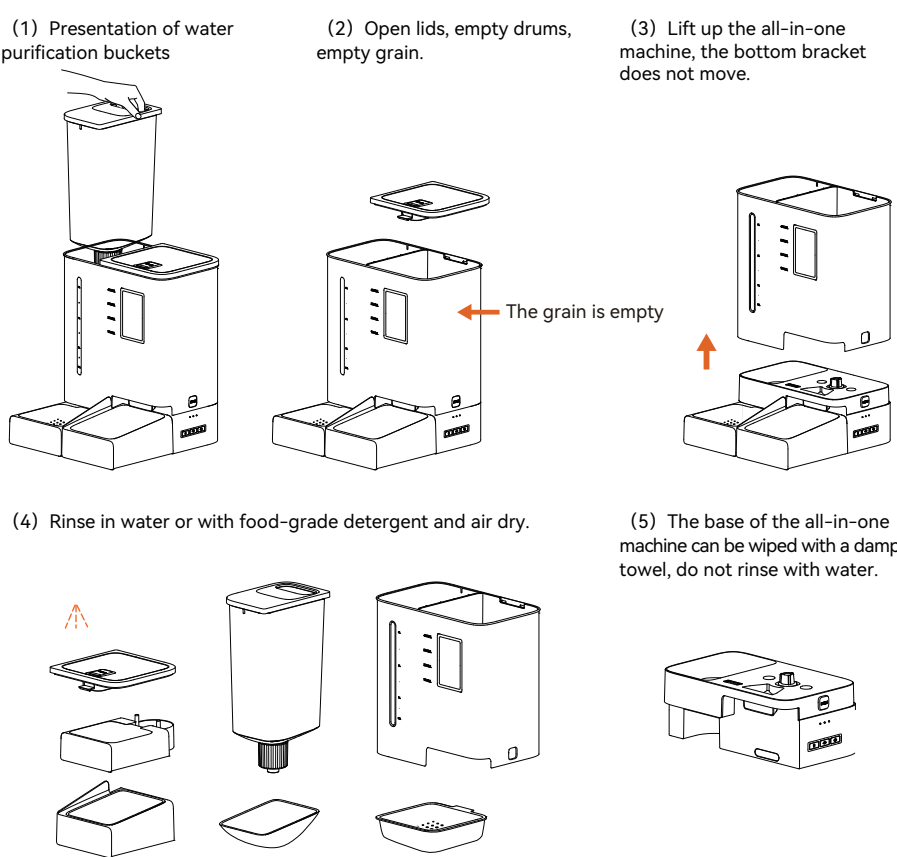
Notes:
1) The key is automatically locked after 30 seconds of no operation.
2) Key use is only effective when the key is unlocked.

Indicator light color	Indicator light signal	device status
White	Blinking	In the process of network distribution
	Ever Bright	Network Connection Successful
Red	Flash	Motor stalling
	Slow flash	Low battery
	Ever Bright	Grain outlet clogged

Notes:
When the equipment fails (low battery, motor blocked, grain outlet blocked)
App pushes exception alerts



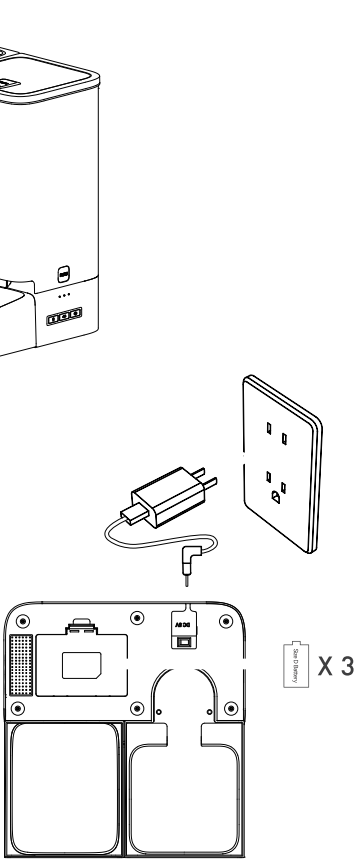
- For your pet's health, regular cleaning of the feeder is recommended.
- You can clean the product when there is scale in the water tank, the food bucket starts to get dirty and there is a lot of loose food in the food bowl. The top cover of the food, the food bucket, the water bucket and the food bowl can be dismantled directly and can be rinsed out directly with water.
- The electronic motherboard at the bottom is not removable, please wipe it clean with a rag or wet paper towel.
- Do not put the product in the dishwasher as it will be permanently damaged!



Water Tank Capacity: 4L
Food Tank Capacity: 5L
Power supply: DC 5V/1A
Power adapter: 3 alkaline 1 batteries (batteries need to be purchased)Power supply adapted to AC110-240V input, DC5V output
Product weight: 2.88kg
Packing size: 31.7*19.5*43.5cm

- Complete the installation according to the installation sequence.
- Plug the 5V1A power adapter into a wall outlet and connect the unit.
Open the battery compartment at the bottom of the device and install 3 alkaline D battery (not necessary) to prevent power outage.
The LED lights up to indicate that the feeder is energized.

- Notes:
1) Batteries need to be purchased by yourself.
2) Make sure all parts are clean and completely dry before turning on the power.



- First unscrew the water outlet cover, add clean water to the left bucket, fill the food bucket with dry pet food, place the water tank firmly, and close the food bucket lid.
- Notes:
1) Do not use canned, wet or damp pet food.
2) Depending on the number of pets being fed, observe the water level window at appropriate intervals and add sufficient amounts of clean water.
- Press and hold the Record button for 1 second, you will hear a beep to start the recording, and release it to end the recording with two beeps. The maximum recording time is 10 seconds, repeat this process each time to change your recording.
- Notes:
1) In the case of already recording, short press 1 time to play 1 recording.
2) After the food comes out, play 1 recording to remind your pet to eat.

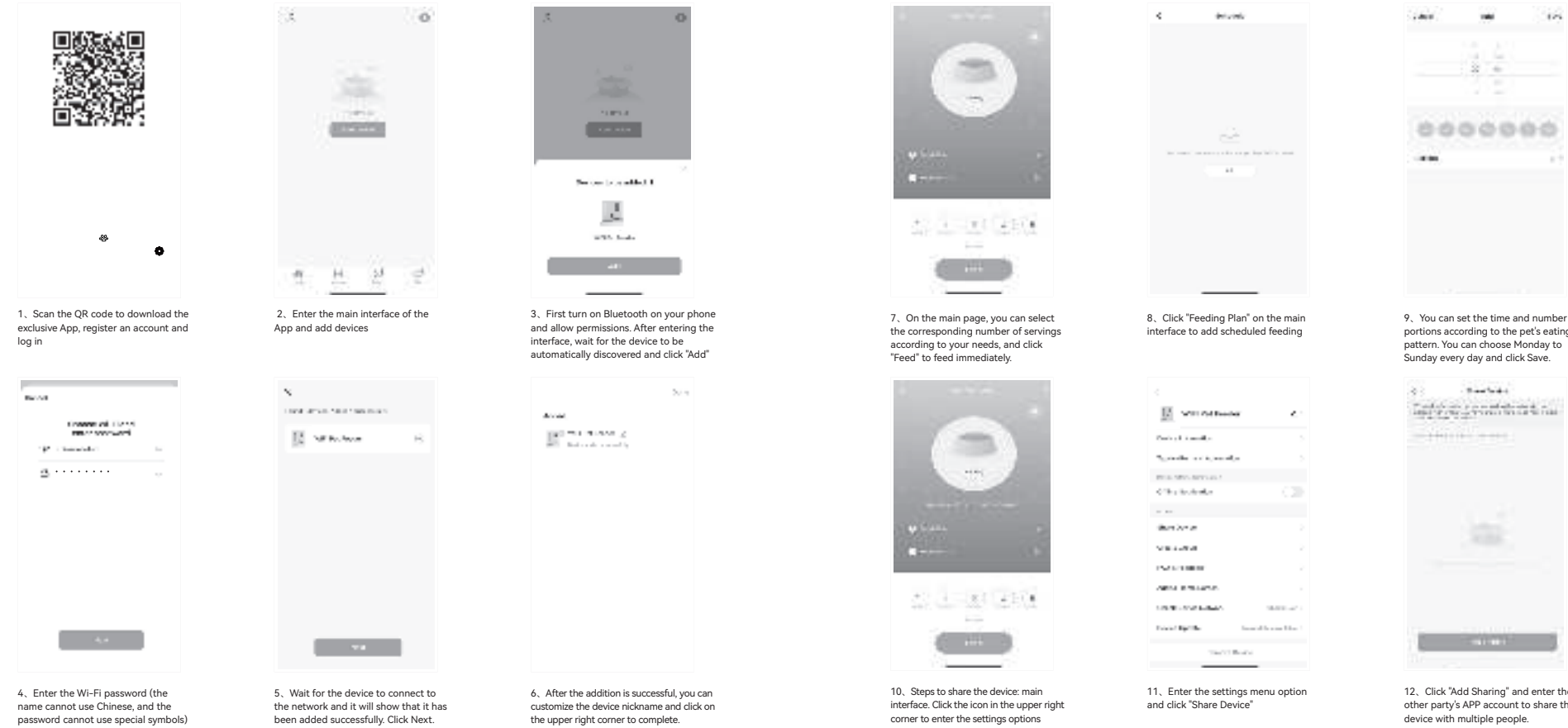
- If there is no operation on the button for 30 seconds, the button will be locked with a beep sound. Press and hold the button [ID] again for 3 seconds with two beep sounds to unlock it.
- When unlocked, you can press and hold the key to restore factory settings.
- Notes:
1) Any button is inoperable when locked and must be unlocked for normal use.
2) App operation will not be affected when locked.

- Manual feeding: Short press to dispense 1 portion of food. If there is recording, the recording will be played once after the food is dispensed.
- Notes:
Feeding schedules will not be affected.
- Press and hold for 6 seconds to make a beep sound, the device will be restored to factory settings, and all network configuration information, feeding plans, and recording data will be cleared.

- Grain blockage detection: Before feeding, the feeder will detect the grain outlet channel. If the grain outlet channel is blocked, in order not to aggravate the problem, the equipment will not perform feeding (including manual feeding and planned feeding) until the grain outlet channel is cleared and malfunctions. After it is released, the device can operate normally.

- When the feeder is not connected to a power source, it is battery powered by default. If you need to use it unplugged, please make sure that you have installed batteries as required.
- When the feeder is battery-powered, the power is limited. In order to ensure that the feeder has a long life and does not interfere with feeding, the feeder continues to enter the low-power mode after 30s of no operation, it will not support the remote control of the App, but the feeding results and the status of the feeder continue to be displayed.
- If you need to use the App function, please connect the power cord and use it after successful network distribution.
- Notes:
1) Any button is inoperable when locked and must be unlocked for normal use.
2) App operation will not be affected when locked.

Smart life APP download operation



- Q: Nothing happens when I press any button**
A: The button will automatically lock if there is no operation for 30 seconds. Please press and hold [ID] for 3 seconds to unlock the button.
- Q: The App cannot connect to the feeder**
A: 1) Please check whether the Wi-Fi name and password are in Chinese or longer than 12 characters, and make sure the Wi-Fi type is 2.4G.
2) Please restart your phone, close non-system software that starts automatically when you turn it on, turn on your phone's Bluetooth and positioning, and try to reconnect.
- Q: The feeder does not discharge food accurately or does not discharge food at all**
A: Please check whether there is too much grain in the food basin or blockage of the grain passage. If so, please clean the grain passage and the grain outlet in time. When using battery power supply, please check whether the battery is dead and whether the battery is leaking.
- Q: The feeder appears offline**
A: Please check whether the distance between the feeder and the router at home is more than 10 meters (the effective distance is 10 meters); try not to have a wall in the middle. According to the characteristics of Wi-Fi, the Wi-Fi signal on the wall will drop sharply and the connection will become unstable, thus causing the device to go offline.
- Q: No response when turning on the computer**
A: Please make sure the power is plugged in. If the check is correct but the device still cannot be turned on normally, please contact the dealer or customer service in time.

Any Changes or modifications not expressly approved by the party responsible for compliance could void the user's authority to operate the equipment.

This device complies with part 15 of the FCC Rules. Operation is subject to the following two conditions: (1) This device may not cause harmful interference, and (2) this device must accept any interference received, including interference that may cause undesired operation.

Note: This equipment has been tested and found to comply with the limits for a Class B digital device, pursuant to part 15 of the FCC Rules. These limits are designed to provide reasonable protection against harmful interference in a residential installation. This equipment generates, uses and can radiate radio frequency energy and, if not installed and used in accordance with the instructions, may cause harmful interference to radio communications. However, there is no guarantee that interference will not occur in a particular installation. If this equipment does cause harmful interference to radio or television reception, which can be determined by turning the equipment off and on, the user is encouraged to try to correct the interference by one or more of the following measures:

- Reorient or relocate the receiving antenna.
- Increase the separation between the equipment and receiver.
- Connect the equipment into an outlet on a circuit different from that to which the receiver is connected.
- Consult the dealer or an experienced radio/TV technician for help.

This equipment complies with FCC radiation exposure limits set forth for an uncontrolled environment. This equipment should be installed and operated with minimum distance 20cm between the radiator& your body.

This transmitter must not be co-located or operating in conjunction with any other antenna or transmitter.