

## **8. Band Edge Check**

### **8.1. Test limits**

Please refer section RSS-GEN&15.247.

### **8.2. Test Procedure**

Details see the KDB558074 D01 Meas Guidance v05r02

8.2.1 Put the EUT on a 1.5m high table, power on the EUT. Emissions were scanned and measured rotating the EUT to 360 degrees, Find the maximum Emission

8.2.2 Check the spurious emissions out of band.

8.2.3 RBW 1MHz ,VBW 3MHz ,peak detector for peak value , RBW 1MHz ,VBW 3MHz ,RMS detector for AV value.

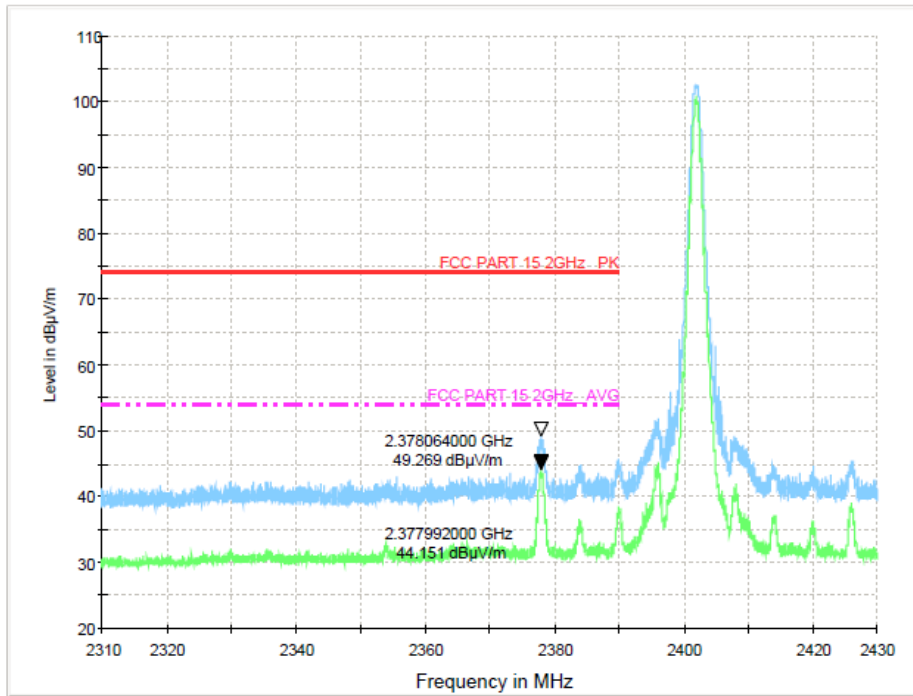
### **8.3. Test Setup**

Same as 3.3 above 1GHz.

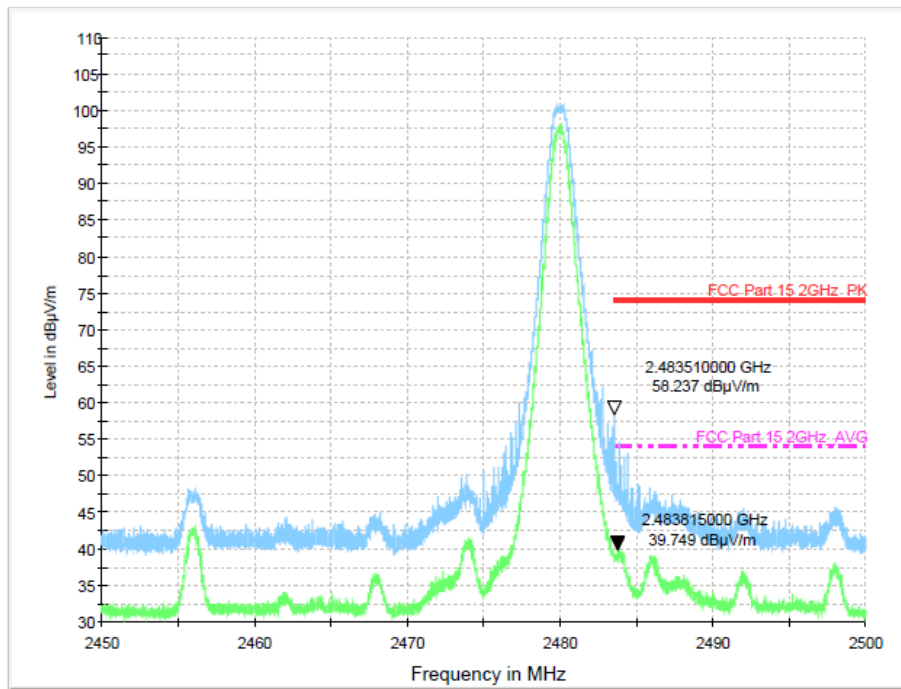
### **8.4. Test Results**

Radiated Method:  
ANT 1

Test Mode: GFSK-Low



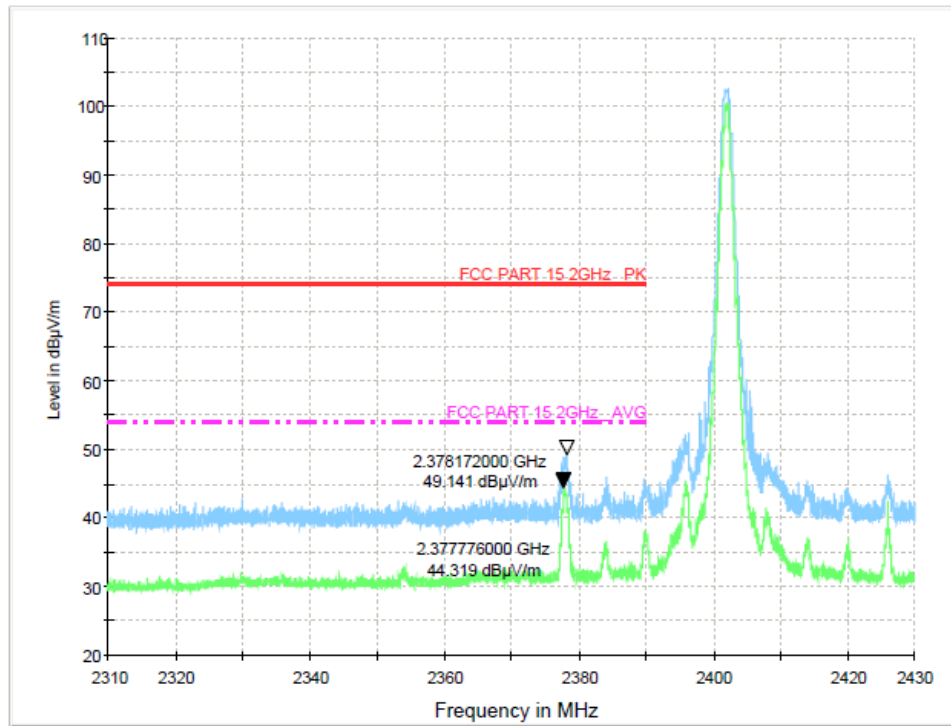
Test Mode: GFSK-High



ANT 2

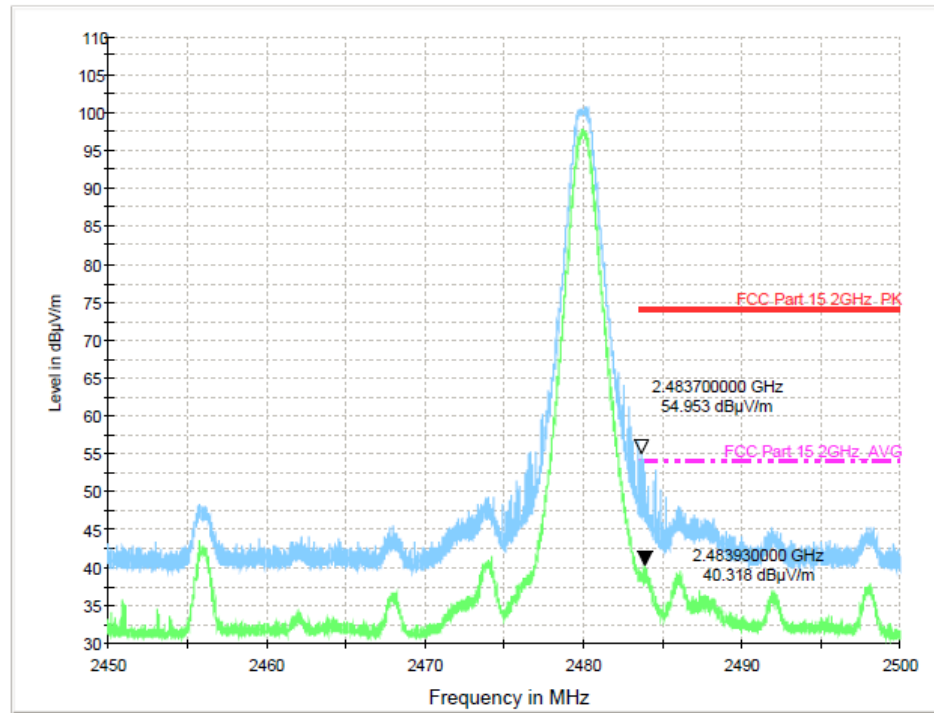
Test Mode:

GFSK-Low



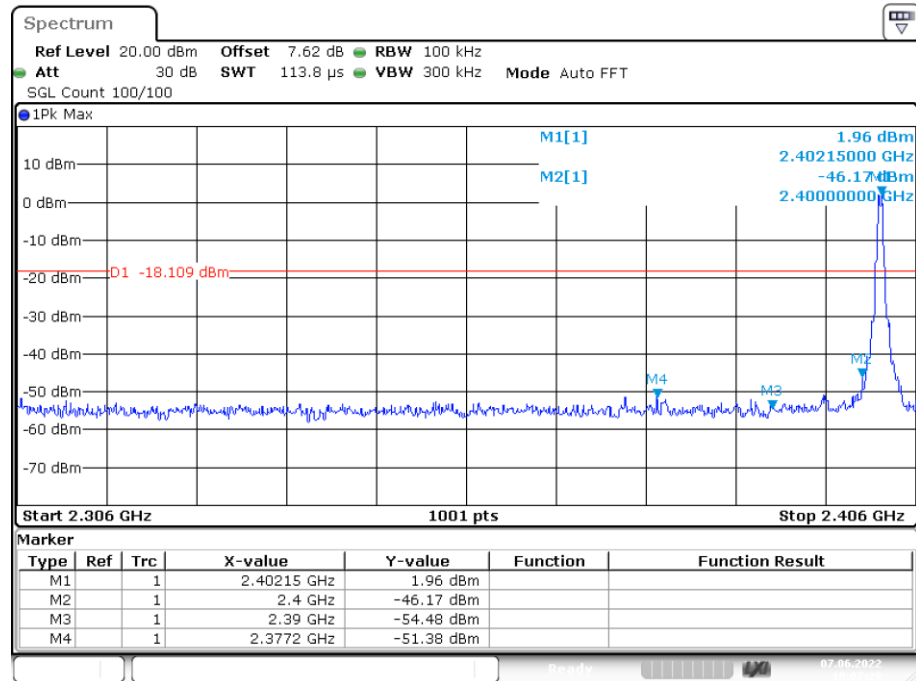
Test Mode:

GFSK-High



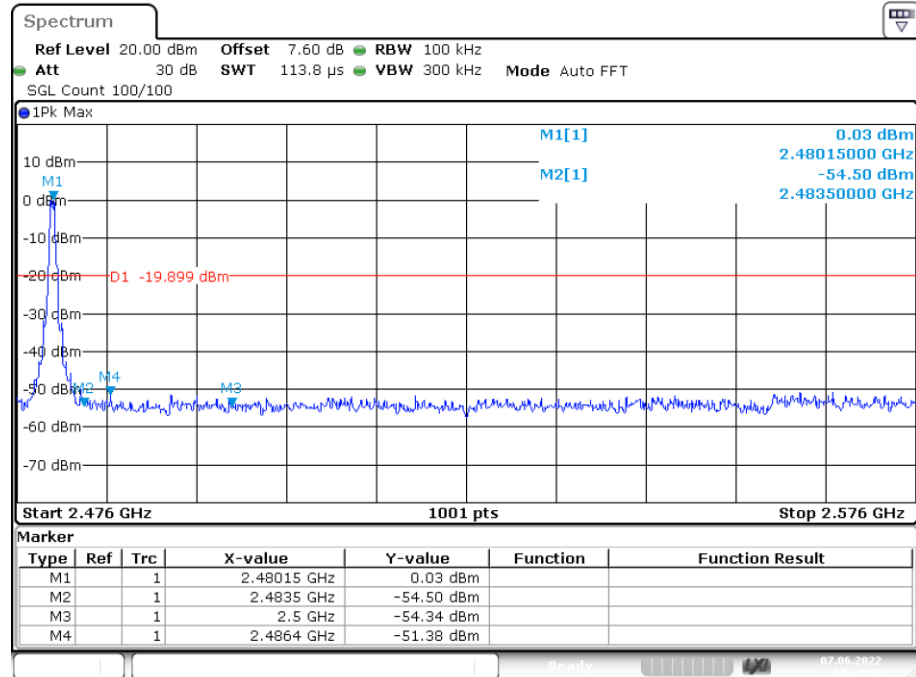
Conducted Method:  
GFSK(ANT 1)

### Lowest channel



Date: 7.JUN.2022 10:07:28

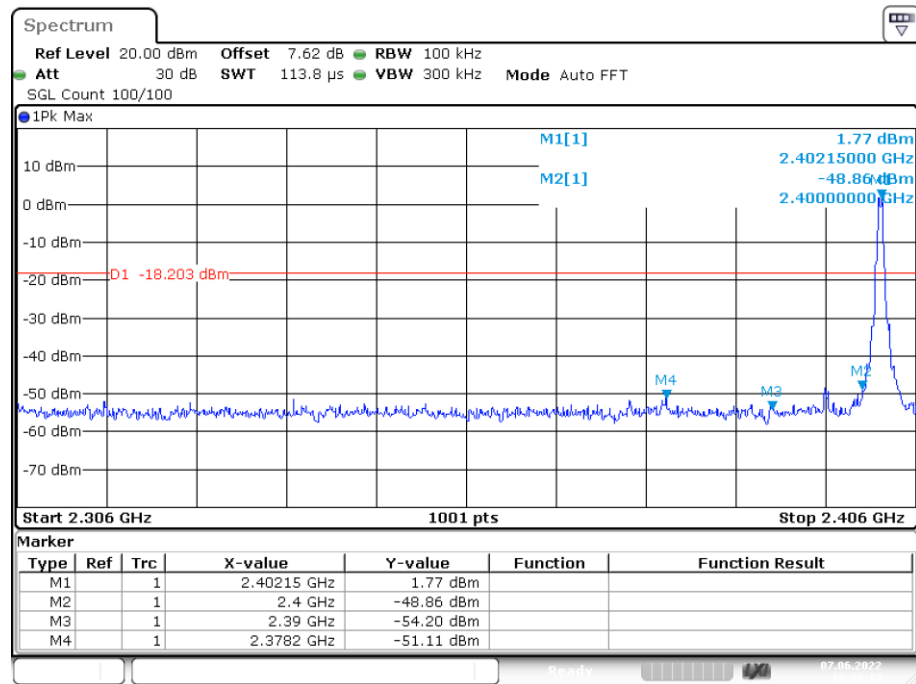
### Highest channel



Date: 7.JUN.2022 10:13:54

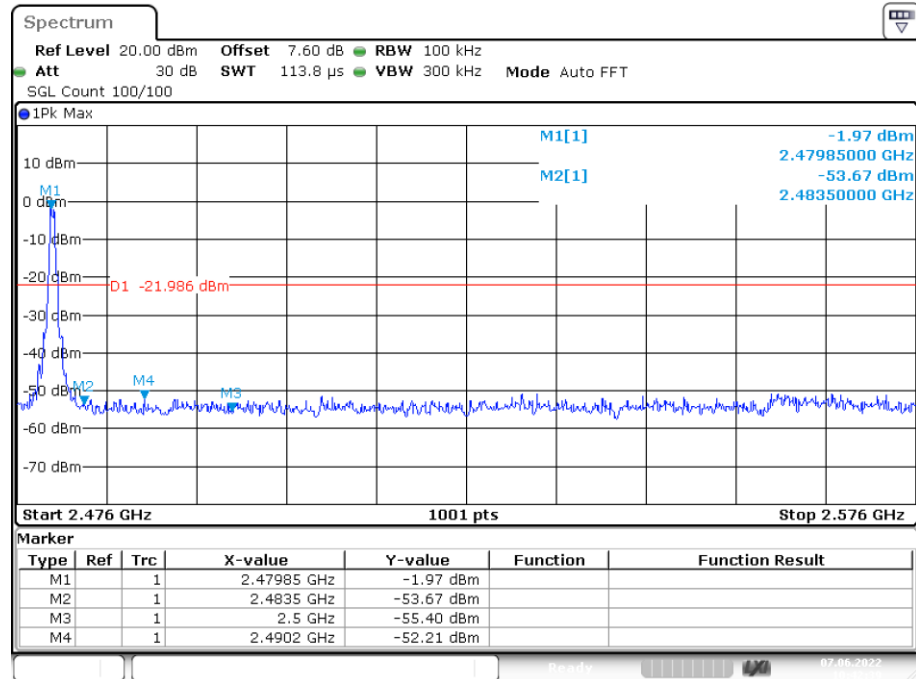
Conducted Method:  
GFSK(ANT 2)

### Lowest channel



Date: 7.JUN.2022 10:36:13

### Highest channel



Date: 7.JUN.2022 10:42:38

## **9. Antenna Requirement**

### **9.1. Standard Requirement**

An intentional radiator shall be designed to ensure that no antenna other than that furnished by the responsible party shall be used with the device. The use of a permanently attached antenna or of an antenna that uses a unique coupling to the intentional radiator shall be considered sufficient to comply with the provisions of this Section. The manufacturer may design the unit so that a broken antenna can be replaced by the user, but the use of a standard antenna jack or electrical connector is prohibited.

### **9.2. Antenna Connected Construction**

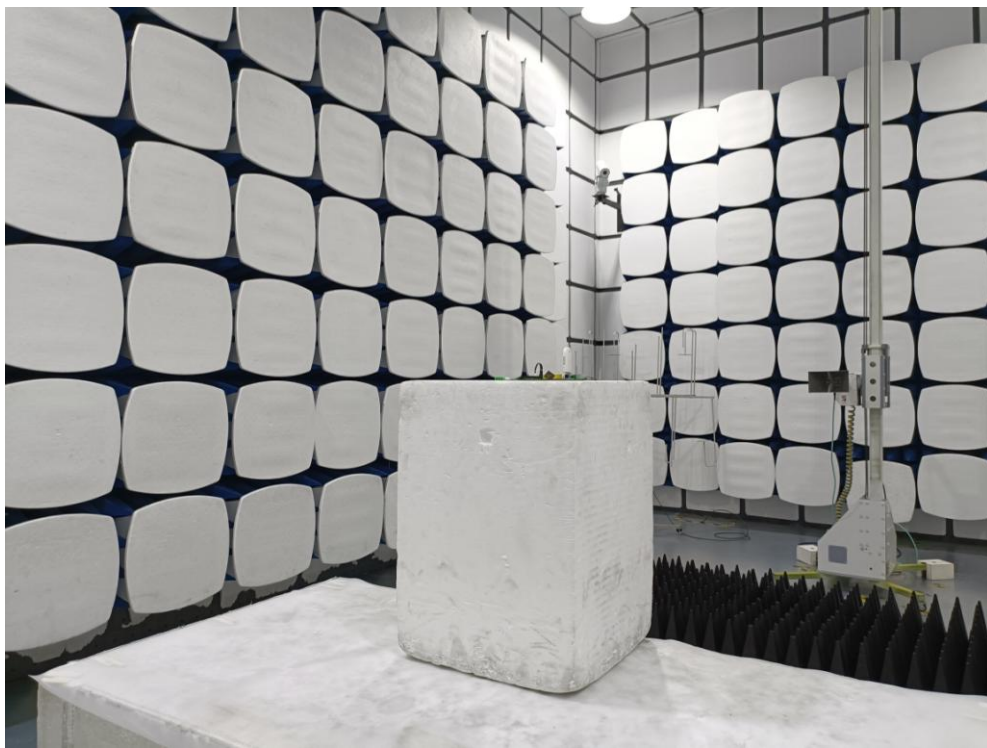
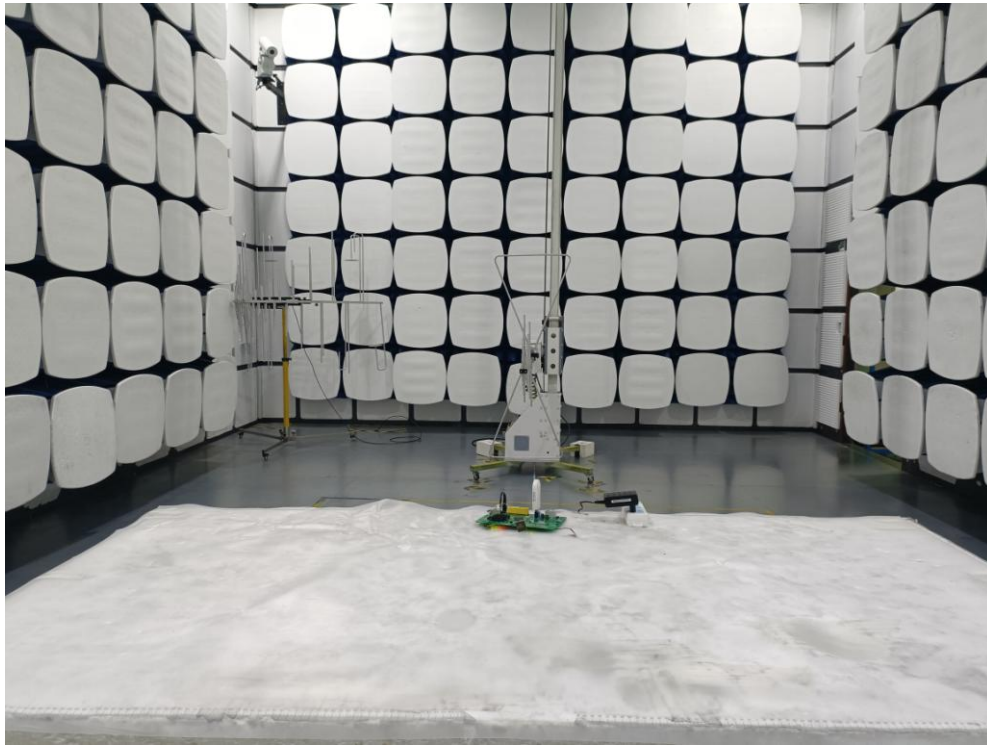
The antenna is Internal antenna and no consideration of replacement. Please see EUT photo for details.

### **9.3. Results**

The EUT antenna is Internal Antenna. It comply with the standard requirement.

## 10. Test Setup Photo

### 10.1. Photos of Radiated emission



## 10.2.Photos of Conducted Emission test





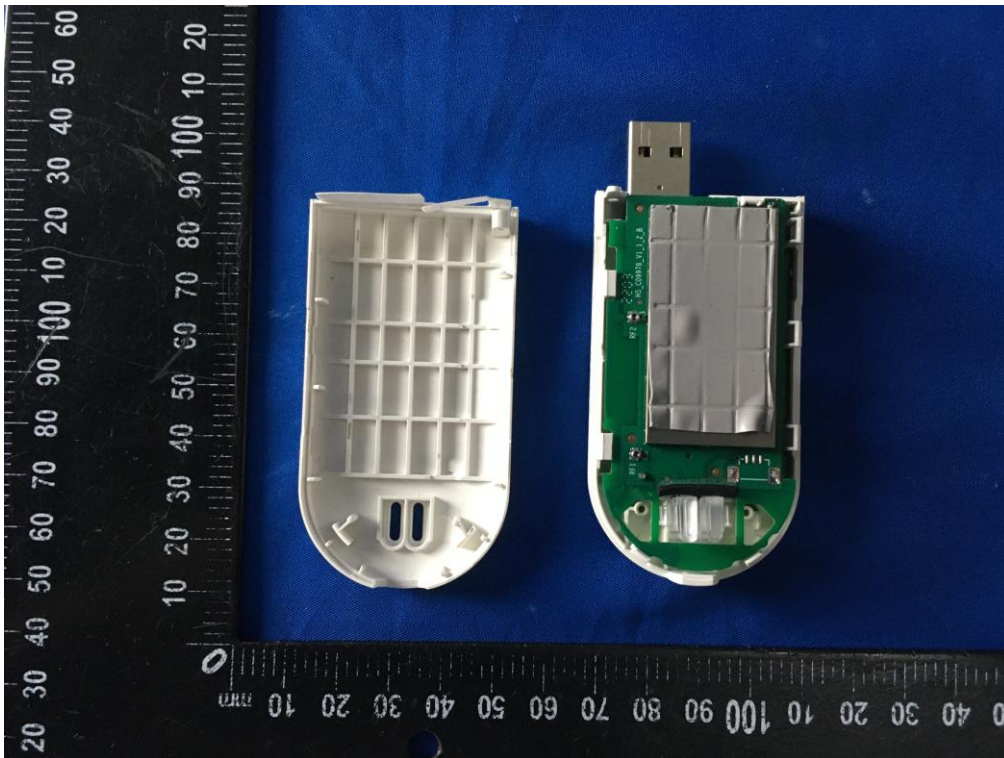
## 11. Photos of EUT



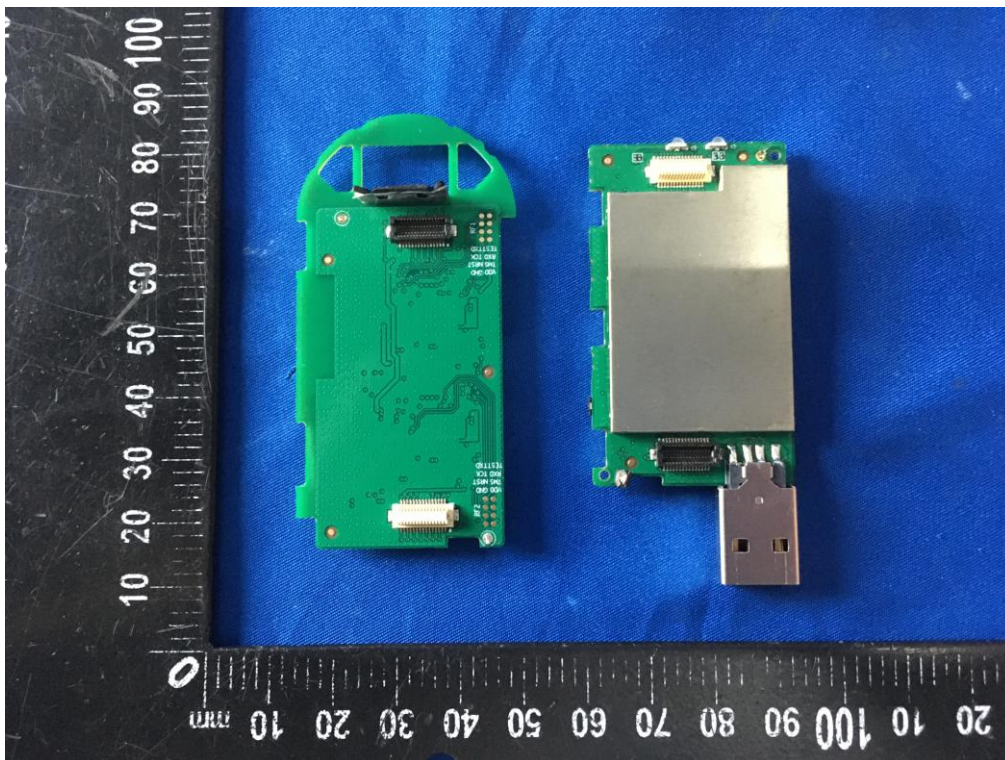
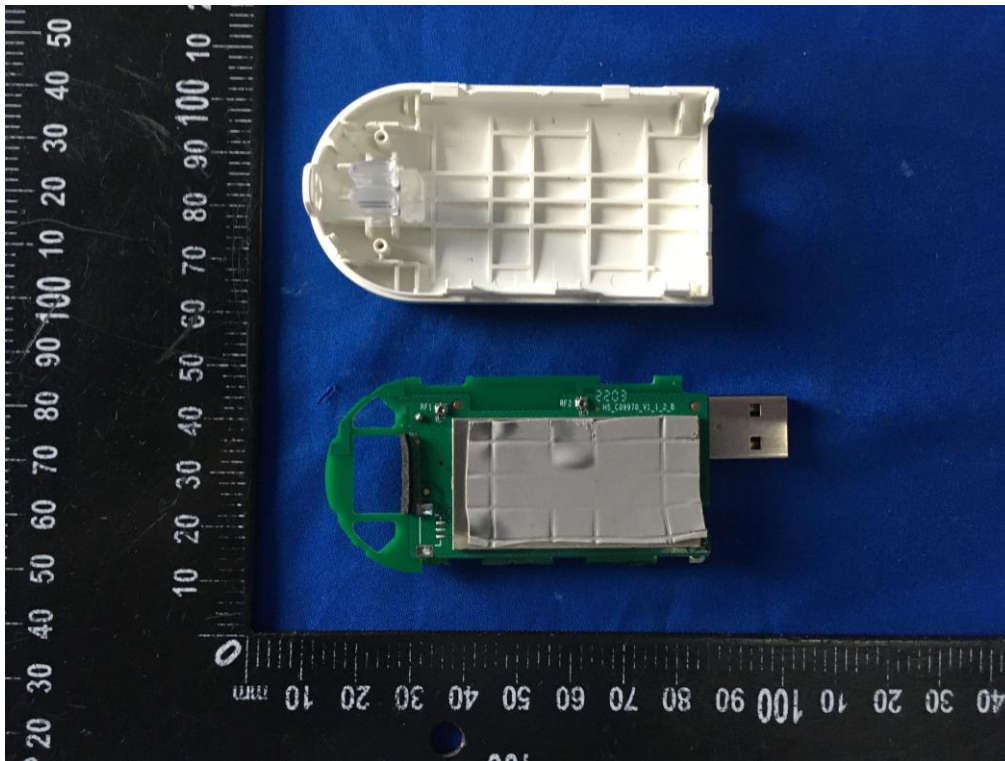




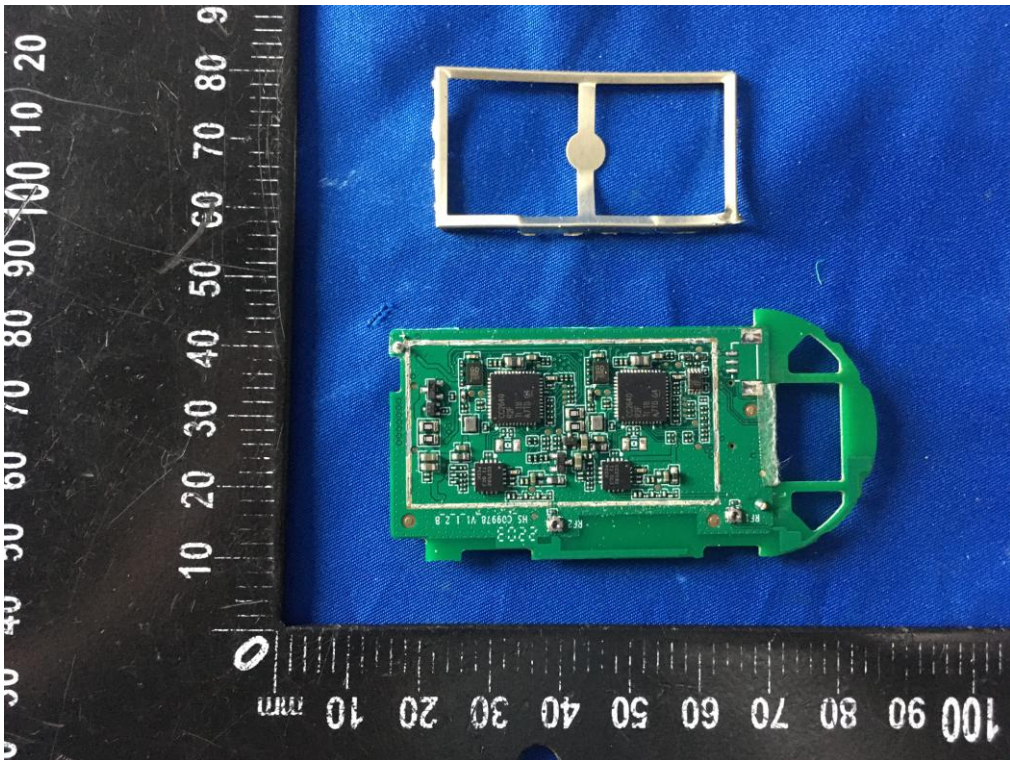
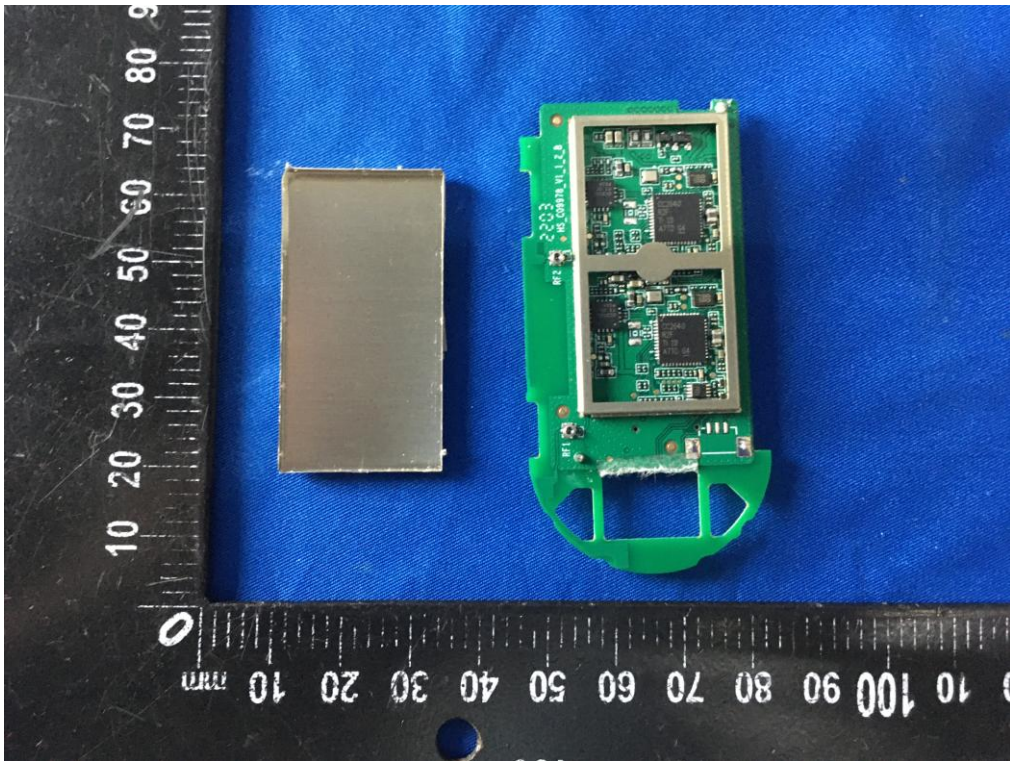




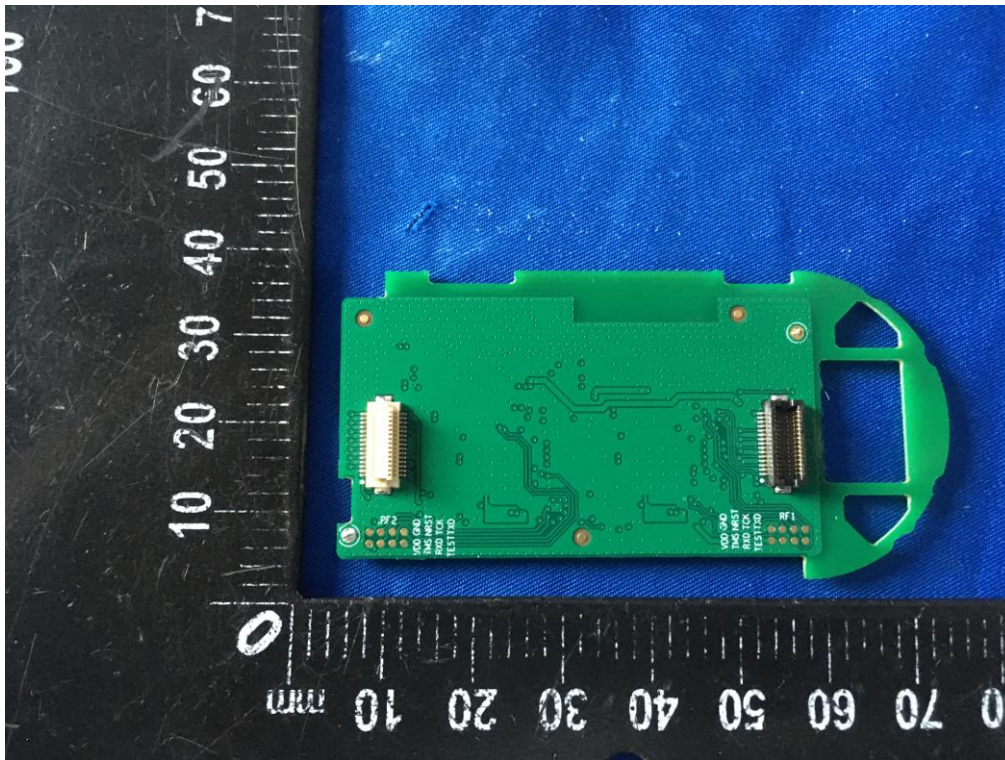
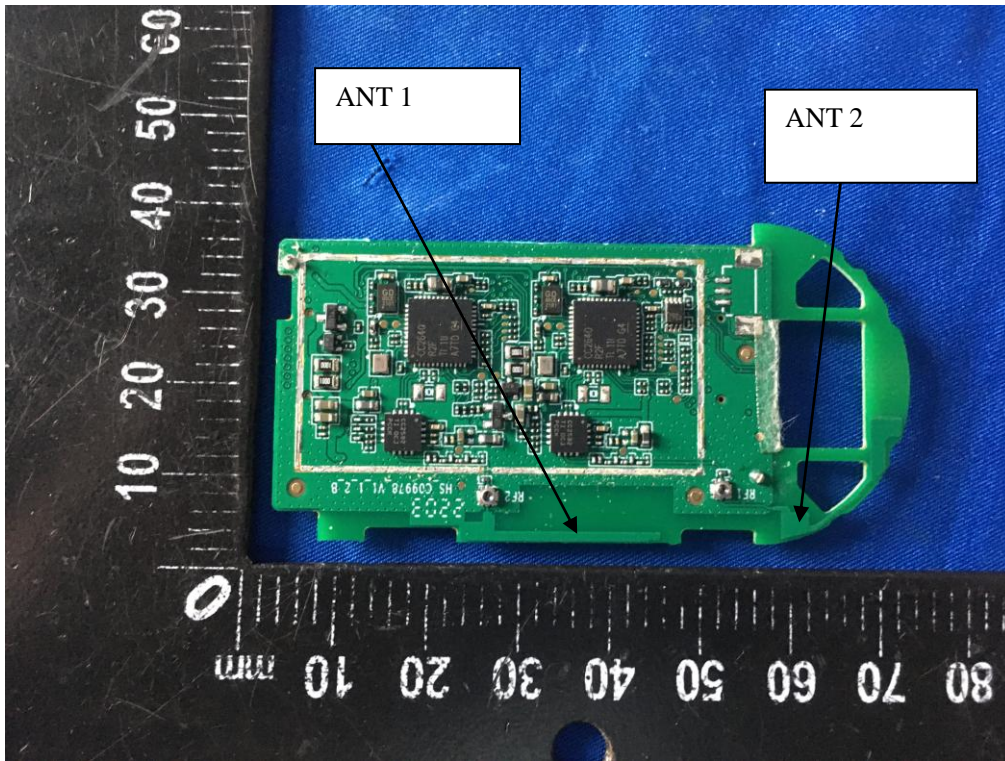




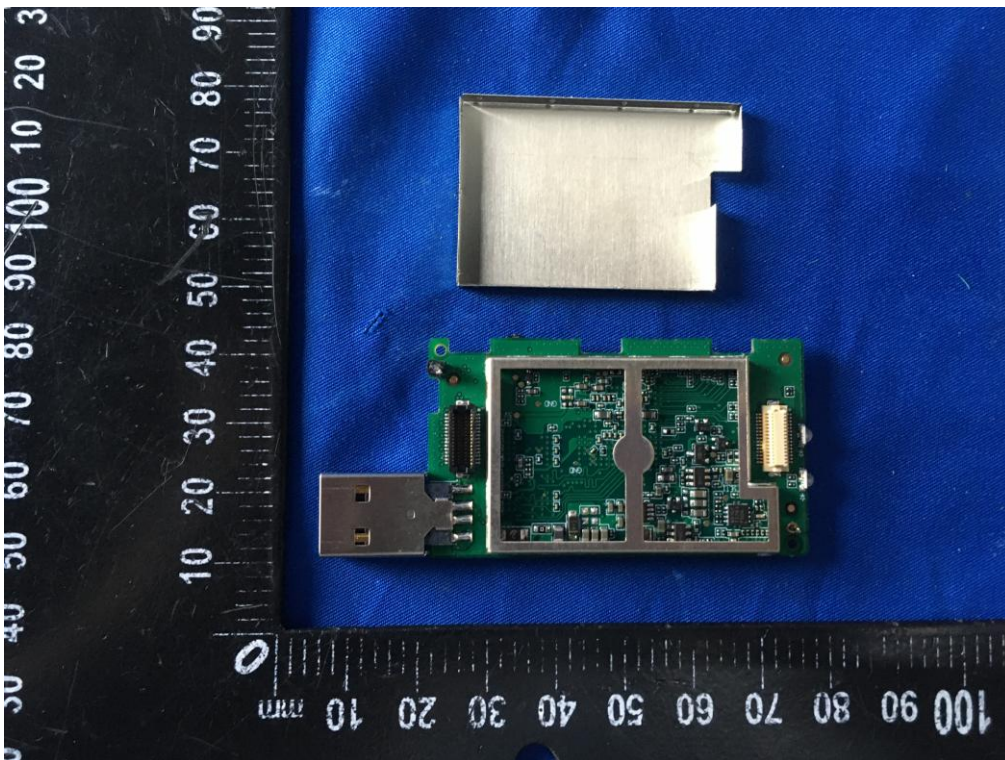
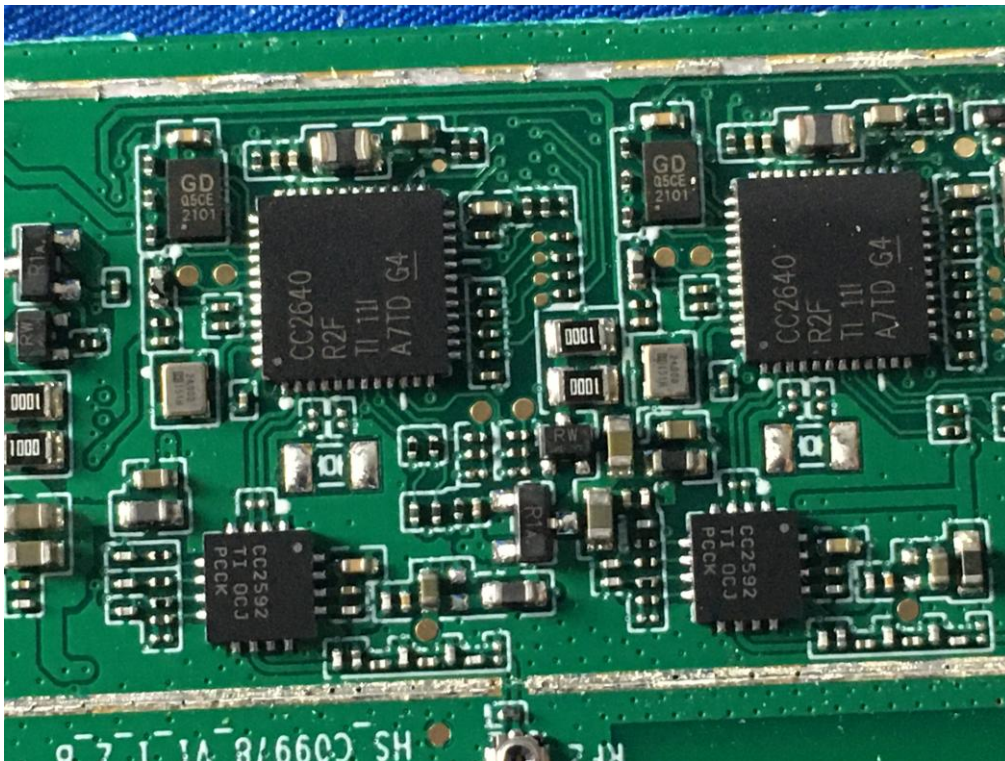




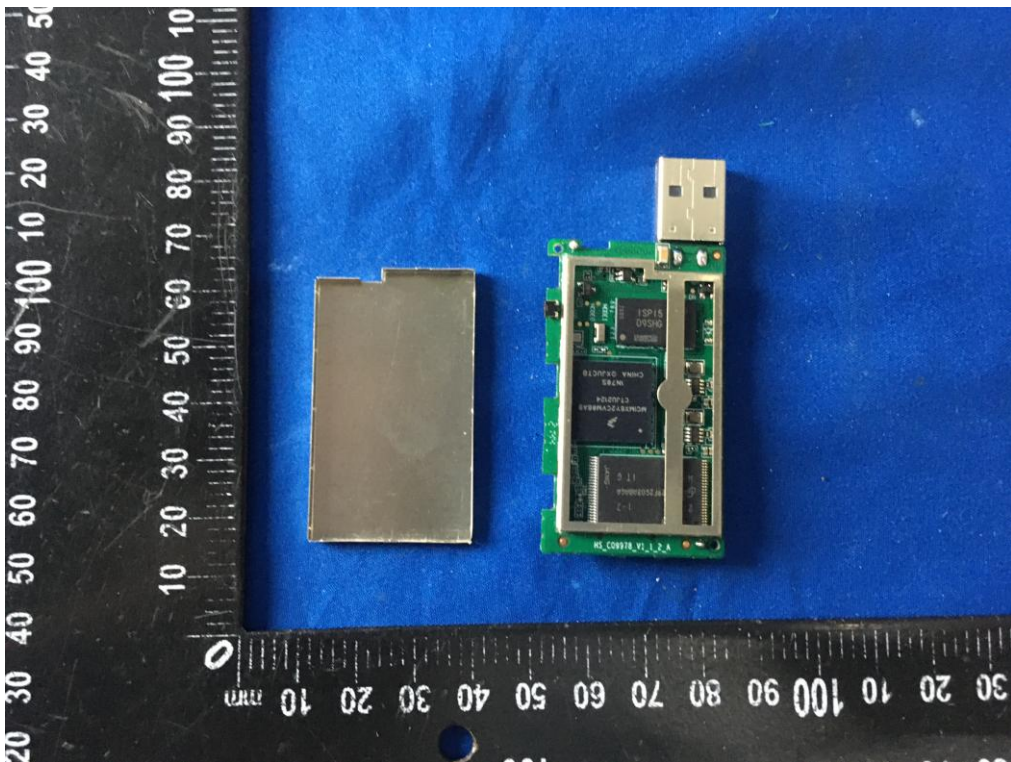
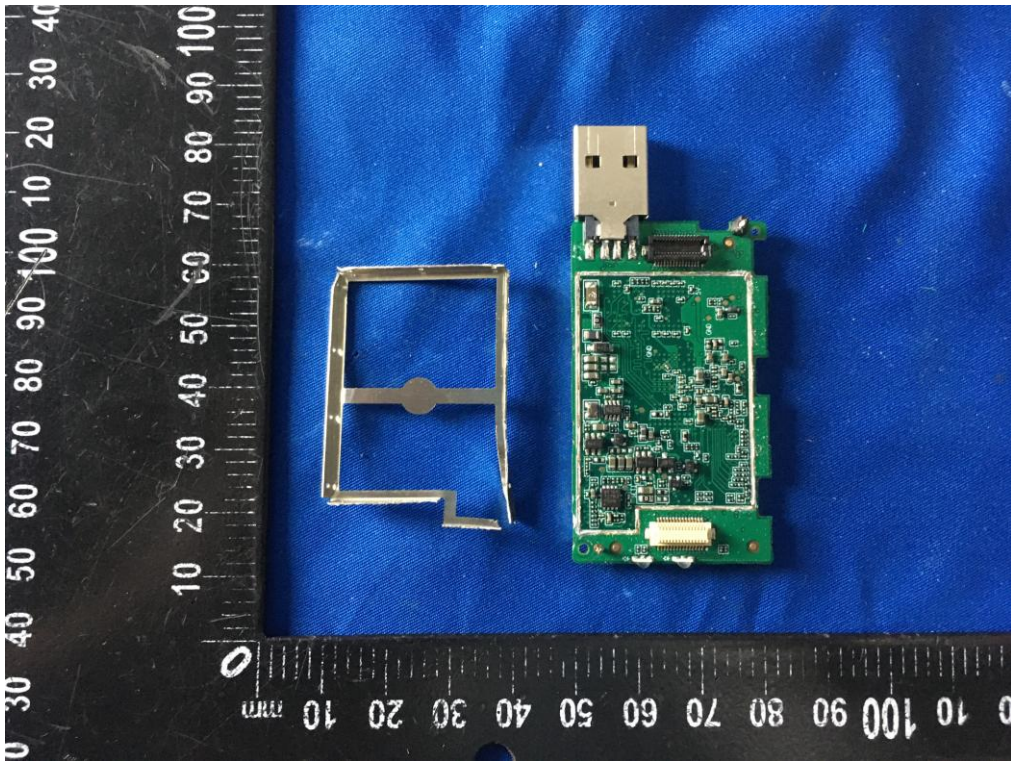




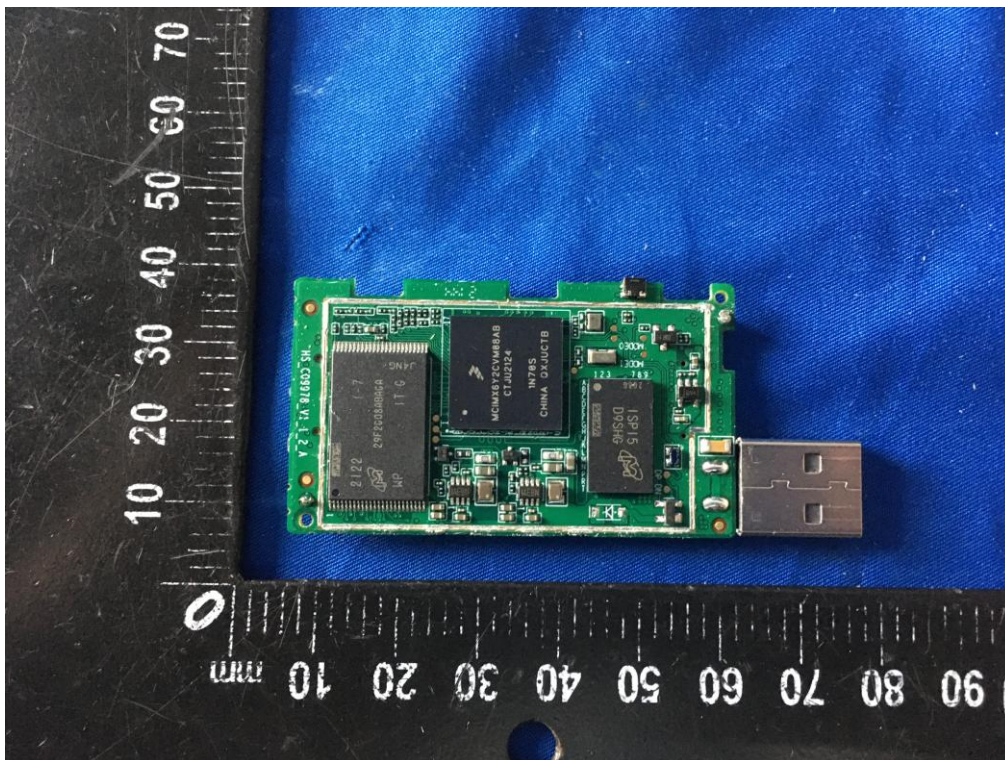
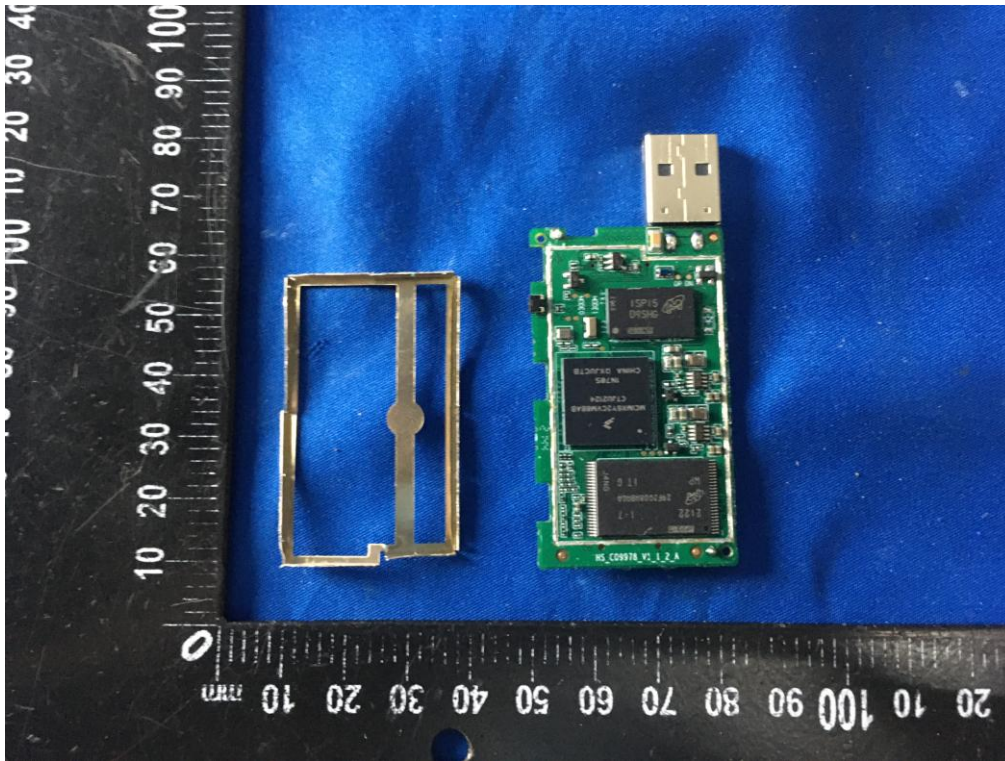




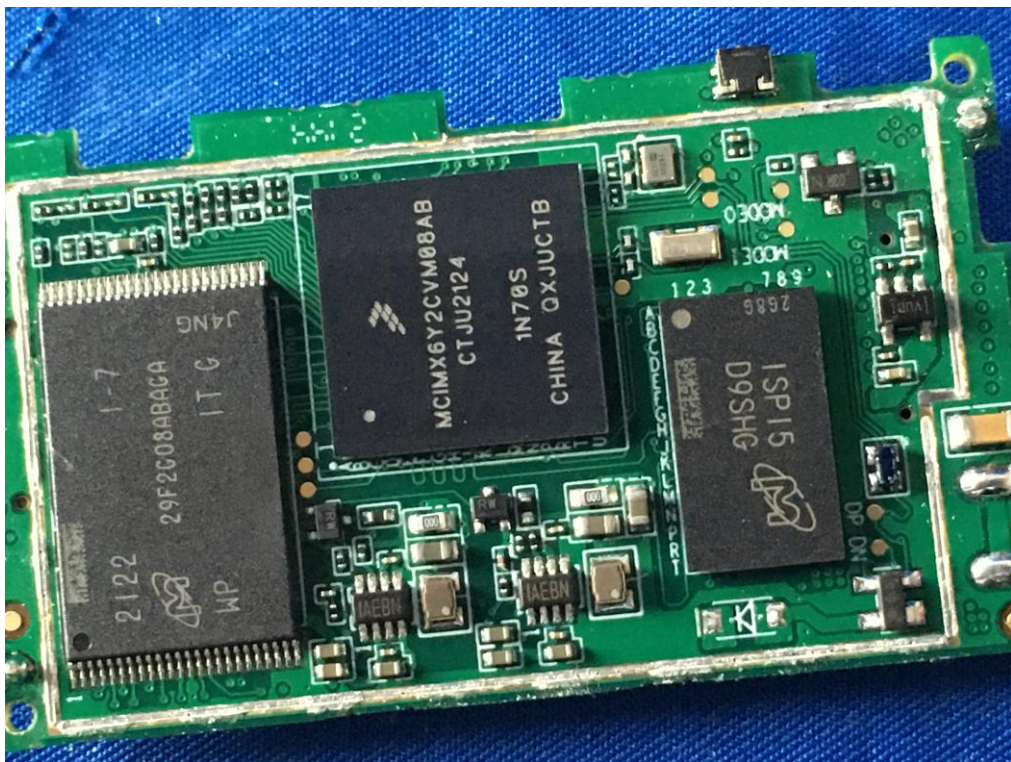
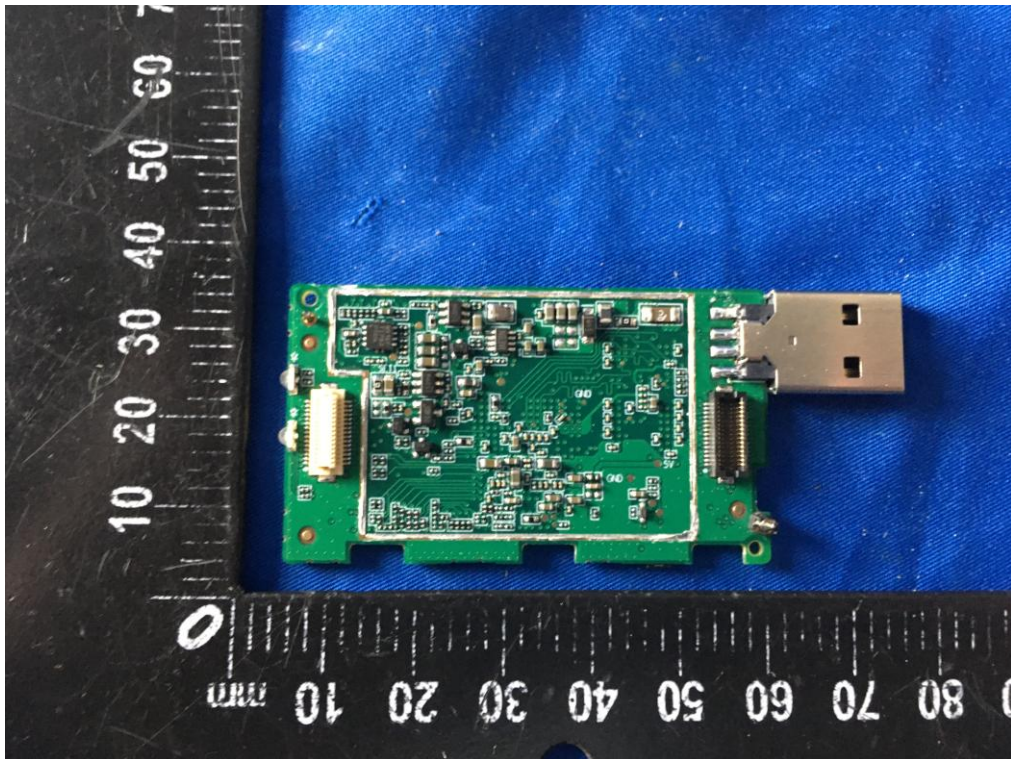












-----THE END OF REPORT-----