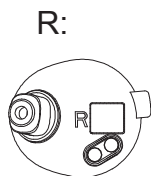
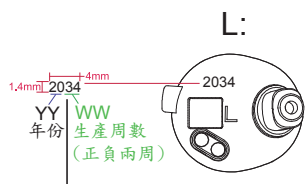


左: 右:



PANTONE Cool Gray 6C



PANTONE Cool Gray 6C



COOL GRAY 5C
Width: 42mm

WHITE

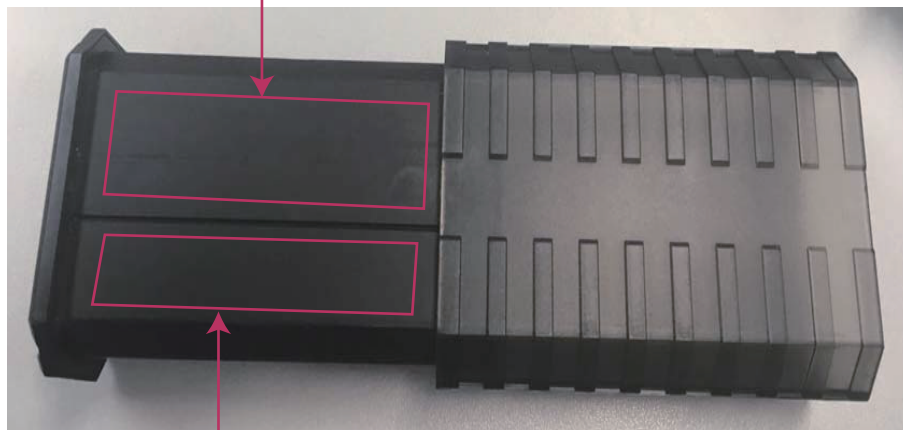
PANTONE 285 (Blue)

WALKER'S
Silencer BT 2.0
Item# GWP-SLCR2-BT
Model# GWP-SLCR2-BT-V2
Made in China



Input: 5V \pm 60mA (earbud)
5V \pm 650mA (charging case)
FCC ID: 2AU3A-GWP-SLCR2BT2
IC: 25750-GWP-SLCR2BT2

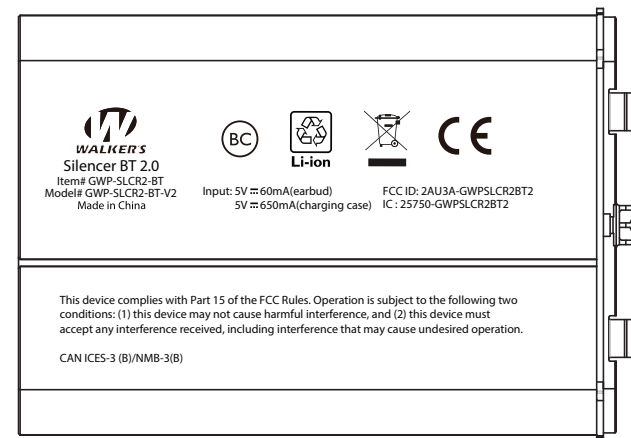
—— 絲印 : Cool Grey 9C



This device complies with Part 15 of the FCC Rules. Operation is subject to the following two conditions: (1) this device may not cause harmful interference, and (2) this device must accept any interference received, including interference that may cause undesired operation.

CAN ICES-3 (B)/NMB-3(B)

—— 絲印 : Cool Grey 9C



Ver.	Description	Appr.
1.0	首次發放	陳琳

DRAWN BY	CHECK BY
陳琳 08-NOV-2021	歐陽勇
PART NO.:	A4
Drawing No.:	

結構確認	電子確認	安規確認
何斌	卓鎮森	聶守河

CONCORD ELECTRONIC LTD.			
TITLE GWP-SLCR2-BT-V2 絲印			
MATERIAL:	QTY/SET:	SCALE: 1:1	UNIT: MM