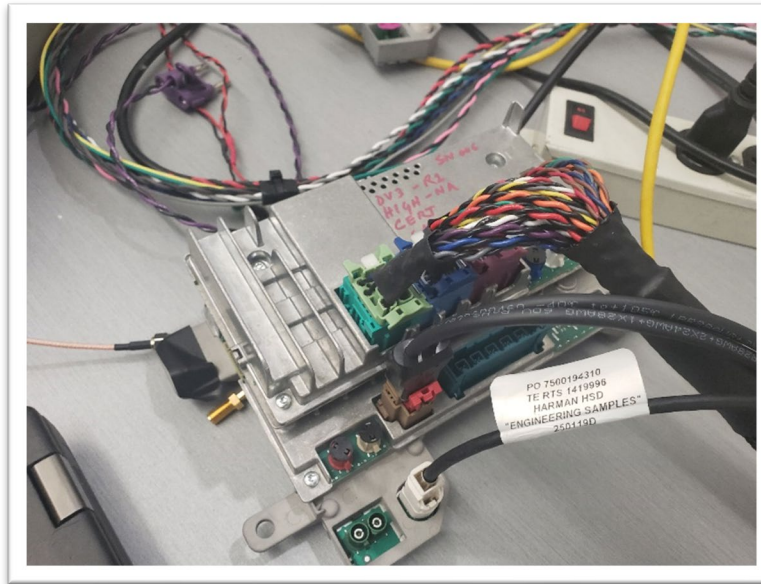
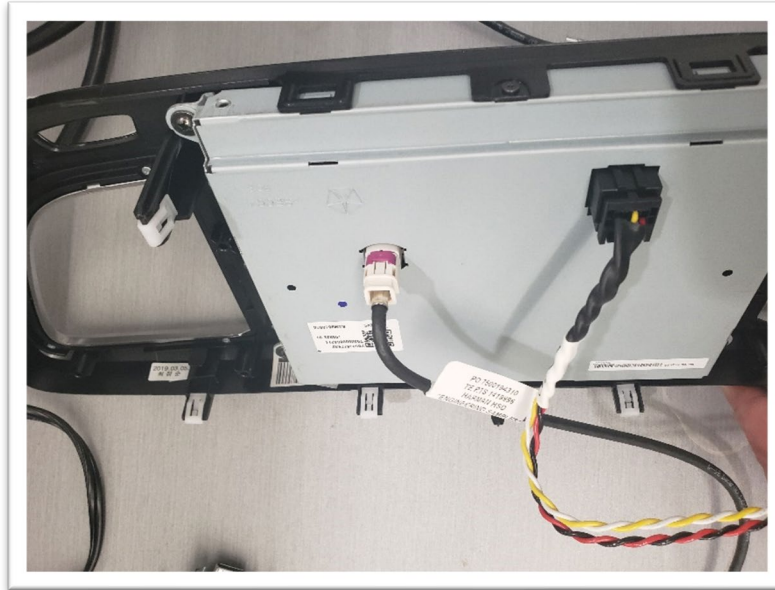


Bench Assembly

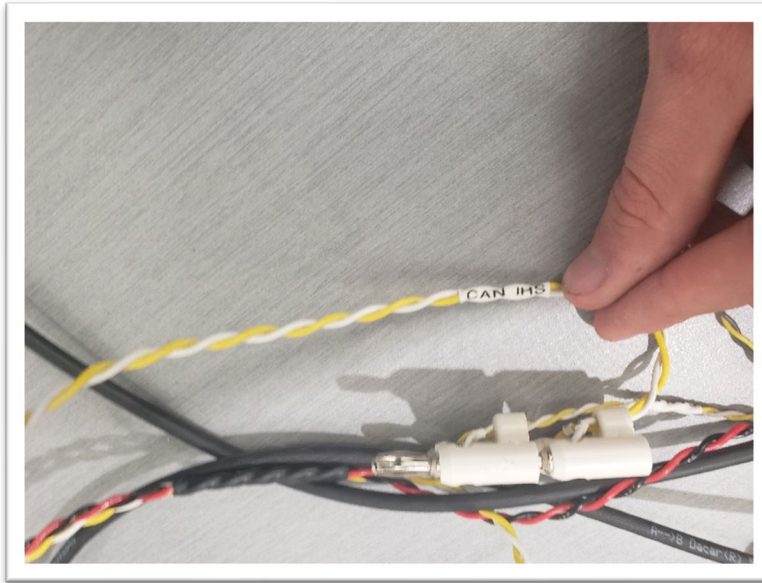
- 1.) Connect all 3 main wiring harness connectors to corresponding color coded ports, brown and red USB cable, and White Display cable to head unit.



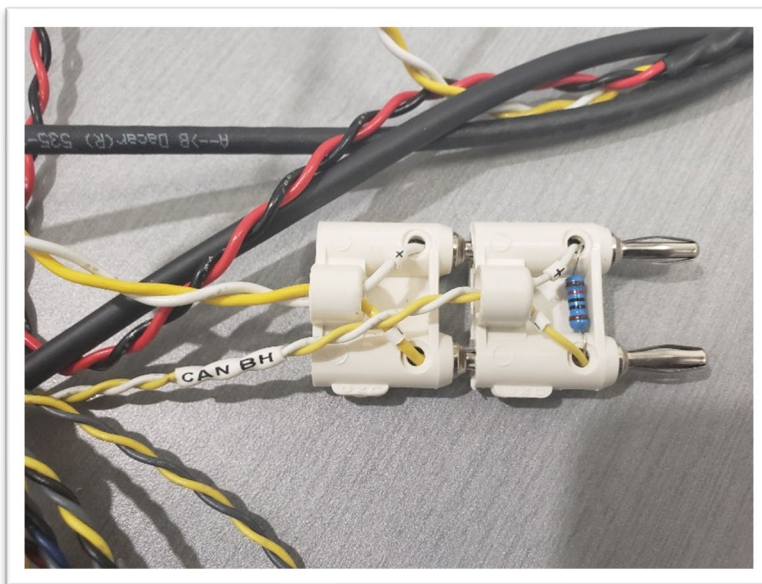
- 2.) Connect the white display cable from head unit as well as black display power cable to the display.



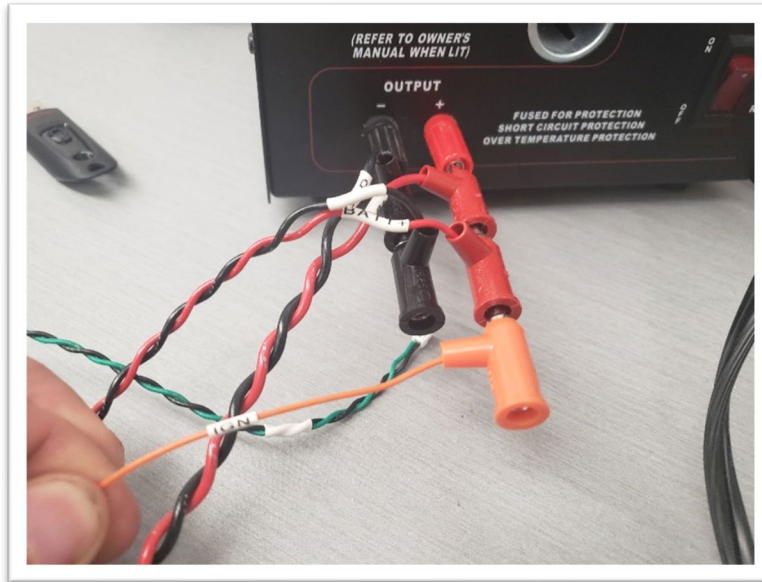
3.) On the Main Wiring Harness, identify the CAN IHS and CAN BH connectors.



4.) Connect these 2 connectors and make sure white cables align with white cables and yellow with yellow as shown below.



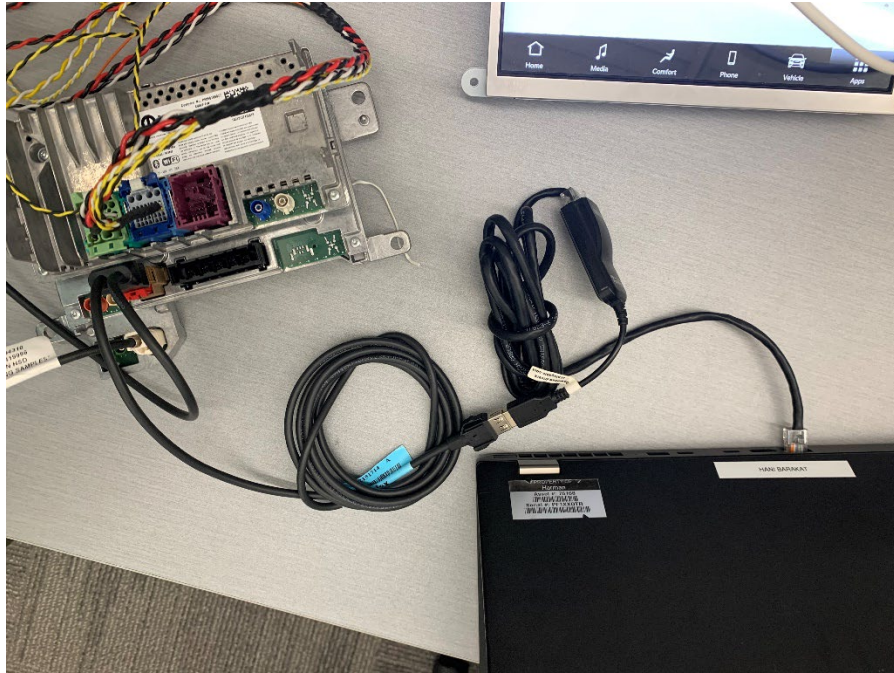
- 5.) On the Main Wiring Harness, identify both ground wires (labeled GND), both power wires (labeled BATT+ and B+), and orange IGN wire. Connect both sets of wires to your Power Supply as shown below.



- 6.) Connect USB A-A cable from brown and red USB cable (from step 1) to pc for terminal commands. Make sure to connect A-A cable to the USB cable without the blue barcode tag as shown below.



- 7.) Connect a USB to ethernet adapter to the brown and red USB cable. Then connect an ethernet cable from the USB to ethernet adapter to your PC as shown below.



- 8.) Turn on Power Supply. Radio will boot in about 20 seconds.

You are all set and ready to test.