



3 Button Remote Programming Instructions

WARNING



Moving Door can cause serious injury or death.

- Wall Console must be mounted in sight of door, at least 5 feet above floor and clear of moving door parts.

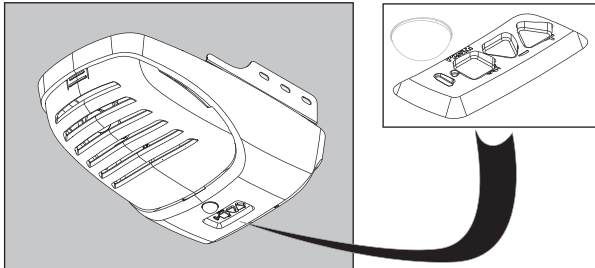
- **Keep people clear** of opening while door is moving.
- **Do NOT** allow children to play with the Remote or door opener.

If **safety reverse** does not work properly:

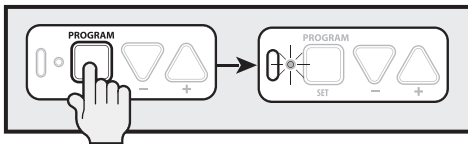
- **Close door then disconnect opener** using the manual release handle.
- **Do NOT** use Remote or door opener.
- Refer to Door and Door Opener Owner's Manuals before attempting any repairs.

1 Putting Opener into Programming Mode

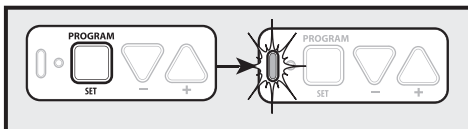
New Genie® Openers



1. Press and hold the program button until the round LED turns blue, then release.



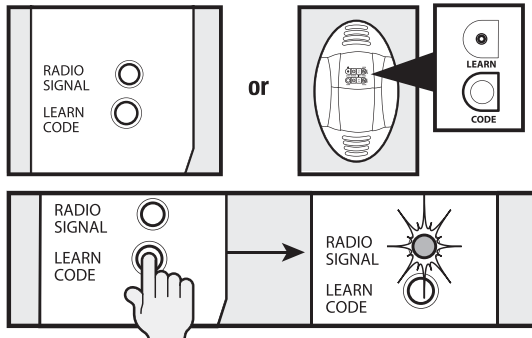
2. The round LED will go out and the long LED will begin flashing purple.



Proceed to step 2.

-OR-

Genie® Openers and External Receivers Manufactured between 1995 to 2011



1. Press & Release Learn Code button once. The red LED will begin to flash.

Proceed to step 2.

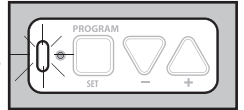
2 Programming a Remote to your Opener

NOTE: Once in programming mode, you will have approximately 30 seconds to perform this step.

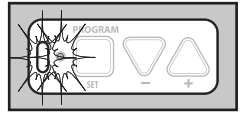


1. Pull protective battery tab from remote.

Note: While programing remote buttons, stand at least 5 feet away from the opener. This ensures you have proper communication between the remote and the opener.



2. Slowly press and release the remote button of your choice two times. The opener LEDs will flash and go off, indicating you have successfully programmed your remote.

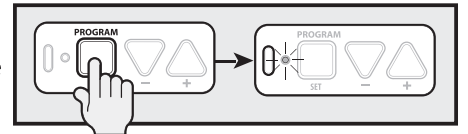


3. Press and release the same button a third time and door will open or close. It is possible to press the remote button too quickly or lightly. If the LEDs do not go OFF, press the remote button several more times to achieve confirmation.

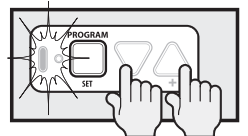
3 Lost or Stolen Remote/Erasing all Remotes

New Genie® Openers

1. Press and hold the program button until the round LED turns blue, then release.



2. Press and hold the Up(+) Down (-) buttons at the same time, until the both LEDs flash blue and go OFF.



Genie® Openers and External Receivers Manufactured between 1995 to 2011

- To erase all remote devices from all other types of Genie® openers, Press and hold the Learn Code Button until the LED stops blinking.

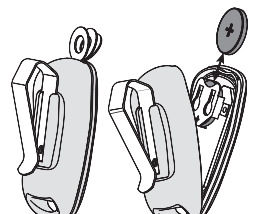
Start at step 1 to reprogram your remotes.

NOTE: Clearing remote control memory from the power head will clear ALL programmed remotes and keypads. Your opener will no longer recognize any signal from any remote device, including a missing remote device.

4 Battery Replacement

Replace remote battery with **CR2032** coin cell battery.

1. Open the remote case using a washer or coin that fits into the slot at the top of the remote.
2. Replace battery. Match battery polarity symbols inside battery housing.
3. Align components and snap case closed.



This equipment has been tested and found to comply with the limits for a Class B digital device, pursuant to part 15 of the FCC Rules. These limits are designed to provide reasonable protection against harmful interference in a residential installation. This equipment generates, uses and can radiate radio frequency energy and, if not installed and used in accordance with the instructions, may cause harmful interference to radio communications. However, there is no guarantee that interference will not occur in a particular installation. If this equipment does cause harmful interference to radio or television reception, which can be determined by turning the equipment off and on, the user is encouraged to try to correct the interference by one or more of the following measures:

- Reorient or relocate the receiving antenna.
- Increase the separation between the equipment and receiver.
- Connect the equipment into an outlet on a circuit different from that to which the receiver is connected.
- Consult the dealer or an experienced radio/TV technician for help.

Caution: Any changes or modifications to this device not explicitly approved by manufacturer could void your authority to operate this equipment.

This device complies with part 15 of the FCC Rules. Operation is subject to the following two conditions: (1) This device may not cause harmful interference, and (2) this device must accept any interference received, including interference that may cause undesired operation.

The device has been evaluated to meet general RF exposure requirement.