

File : c:/idx3/SYSTEM/SARMEAS3/data/Normal/99110239\_ZOOM.VLT  
Start : 2-Nov-99 05:46:52 pm End : 2-Nov-99 05:56:44 pm

Radio Type : HYUNDAI  
Model Number : CKLHGC900  
Serial Number : 001  
Frequency : 848.31 MHz  
Peak Trans. Pwr : 0.300 W  
Start Trans. Pwr: 0.300 W  
Antenna Type : Helical  
Antenna Posn. : In  
Phantom Type : Body  
Phantom Posn. : Torso  
Scan Type : ZOOM/SAR  
Probe Name : PCTEST  
Field Type : E Field  
Orientation : 0 Degrees

Mixture Type = Muscle  
Mixture Dielectric Constant = 56.20  
Mixture Conductivity = 0.950

Comment :  
SINGLE MODE PHONE  
CHANNEL 777 FM MODE  
PCTEST BODY SAR

Robot : PCTEST

Probe Offset = 0.25 cm  
Sensor Factor = 0.0108  
Conversion Factor = 0.895

PCTEST Amplifier Channel Settings : 0.168 0.136 0.132

Max Location : X = 3.250, Y = -4.000, Z = 0.000 (cm) Value = 14.988

Measured Values (volts) =  
1.475E-002 1.228E-002 1.017E-002 8.454E-003 7.005E-003 6.019E-003  
5.198E-003 4.566E-003 4.115E-003 3.749E-003 3.284E-003 2.844E-003  
2.343E-003 1.867E-003 1.367E-003 1.003E-003 7.065E-004 6.016E-004  
6.117E-004 7.156E-004 8.126E-004

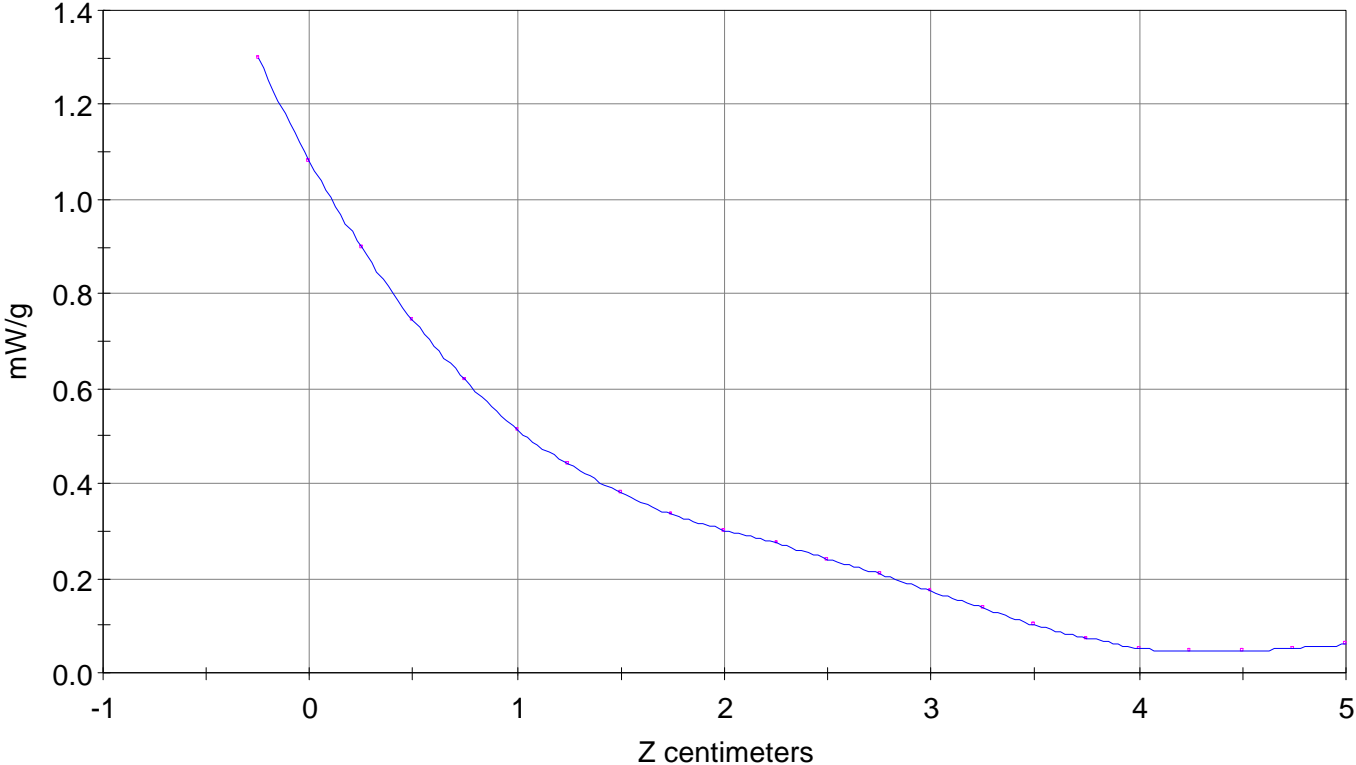
Calc. Voltage @ Surface (Vs) = 0.0178

Voltage @ 1.00 cm (Vt) = 0.0085

Ave. Voltage (Vs+Vt)/2 = 0.0131

Ave. SAR over 1 g (mW/g) = 0.9590

SAR Scan  
File : 9110239\_ZOOM  
Start : 2-Nov-99 05:46:52 pm End : 2-Nov-99 05:56:44 pm  
HYUNDAI/CKLHGC900/001;848.31MHz;W;Helical/In;  
Body/Torso;ZOOM/SAR;PCTEST/E Field/0 DegreesMuscle/56.20/0.950

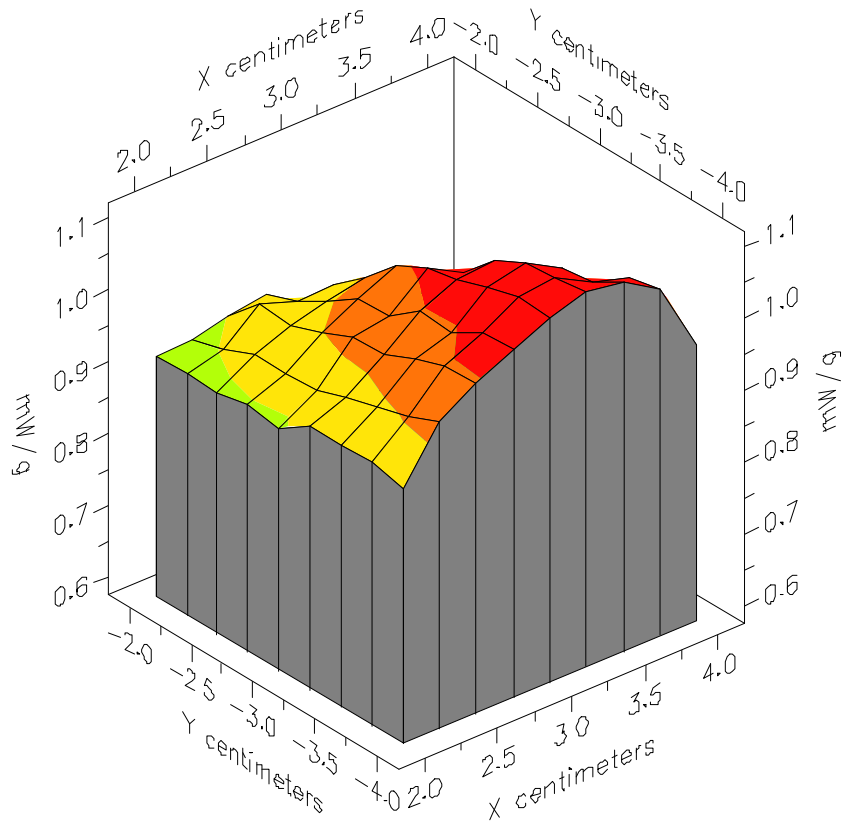


File : 99110239\_ZOOM

Start : 2-Nov-99 05:46:52 pm End : 2-Nov-99 05:56:44 pm

HYUNDAI/CKLHGC900/001;848.31MHz;W;Helical/In;

Body/Torso;ZOOM/SAR;PCTEST/E Field/0 DegreesMuscle/56.20/0.950

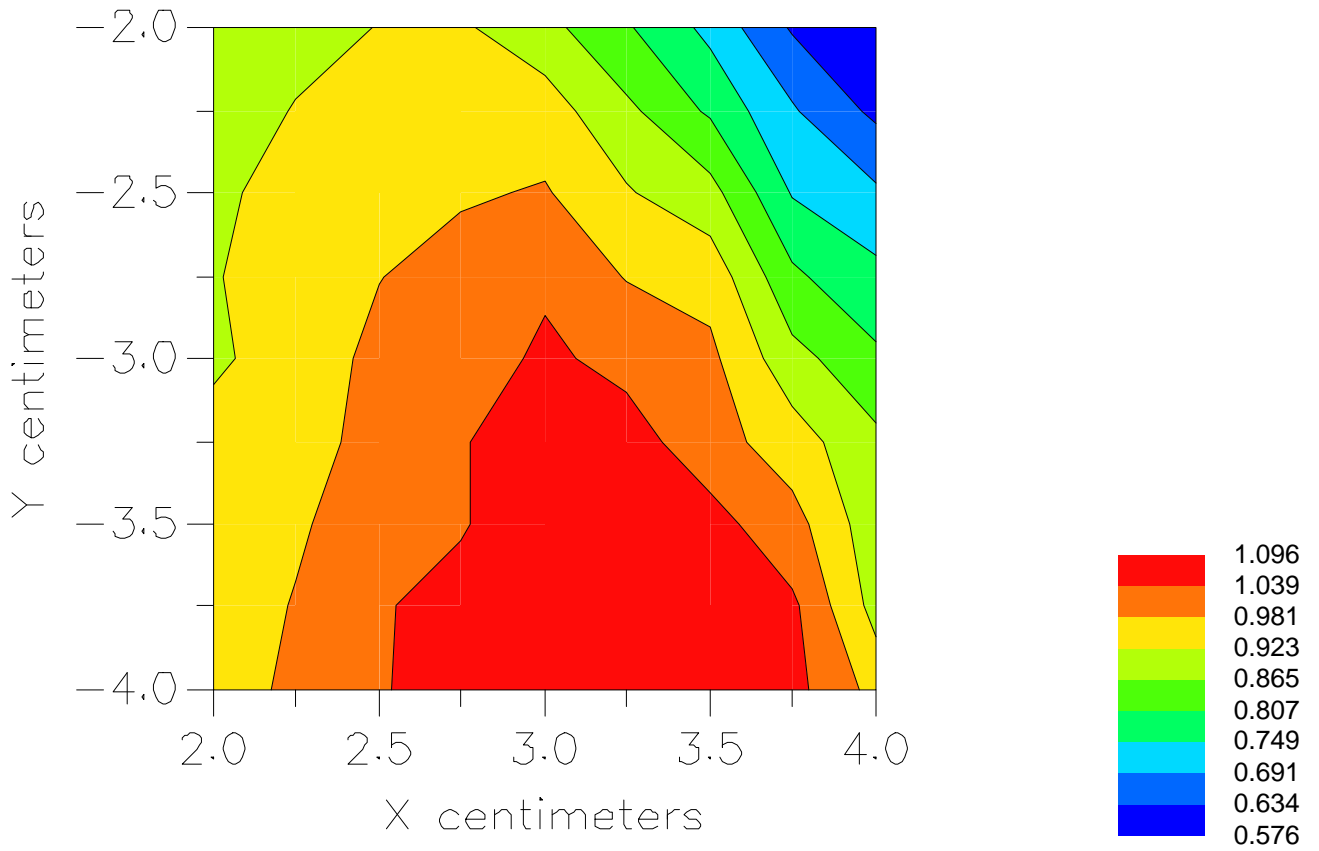


File : 99110239\_ZOOM

Start : 2-Nov-99 05:46:52 pm End : 2-Nov-99 05:56:44 pm

HYUNDAI/CKLHGC900/001;848.31MHz;W;Helical/In;

Body/Torso;ZOOM/SAR;PCTEST/E Field/0 DegreesMuscle/56.20/0.950



File : c:/idx3/SYSTEM/SARMEAS3/data/Normal/99110233\_ZOOM.VLT  
Start : 2-Nov-99 04:27:04 pm End : 2-Nov-99 04:36:43 pm

Radio Type : HYUNDAI  
Model Number : CKLHGC900  
Serial Number : 001  
Frequency : 848.31 MHz  
Peak Trans. Pwr : 0.300 W  
Start Trans. Pwr : 0.300 W  
Antenna Type : Helical  
Antenna Posn. : Out  
Phantom Type : Body  
Phantom Posn. : Torso  
Scan Type : ZOOM/SAR  
Probe Name : PCTEST  
Field Type : E Field  
Orientation : 0 Degrees

Mixture Type = Muscle  
Mixture Dielectric Constant = 56.20  
Mixture Conductivity = 0.950

Comment :  
SINGLE MODE PHONE  
CHANNEL 777 CDMA MODE  
PCTEST BODY SAR

Robot : PCTEST

Probe Offset = 0.25 cm  
Sensor Factor = 0.0108  
Conversion Factor = 0.895

PCTEST Amplifier Channel Settings : 0.168 0.136 0.132

Max Location : X = 3.250, Y = -3.750, Z = 0.000 (cm) Value = 15.048

Measured Values (volts) =  
1.470E-002 1.235E-002 9.839E-003 8.111E-003 6.716E-003 5.670E-003  
4.922E-003 4.403E-003 3.960E-003 3.667E-003 3.263E-003 2.887E-003  
2.365E-003 1.872E-003 1.443E-003 1.004E-003 7.378E-004 6.555E-004  
6.076E-004 7.197E-004 8.071E-004

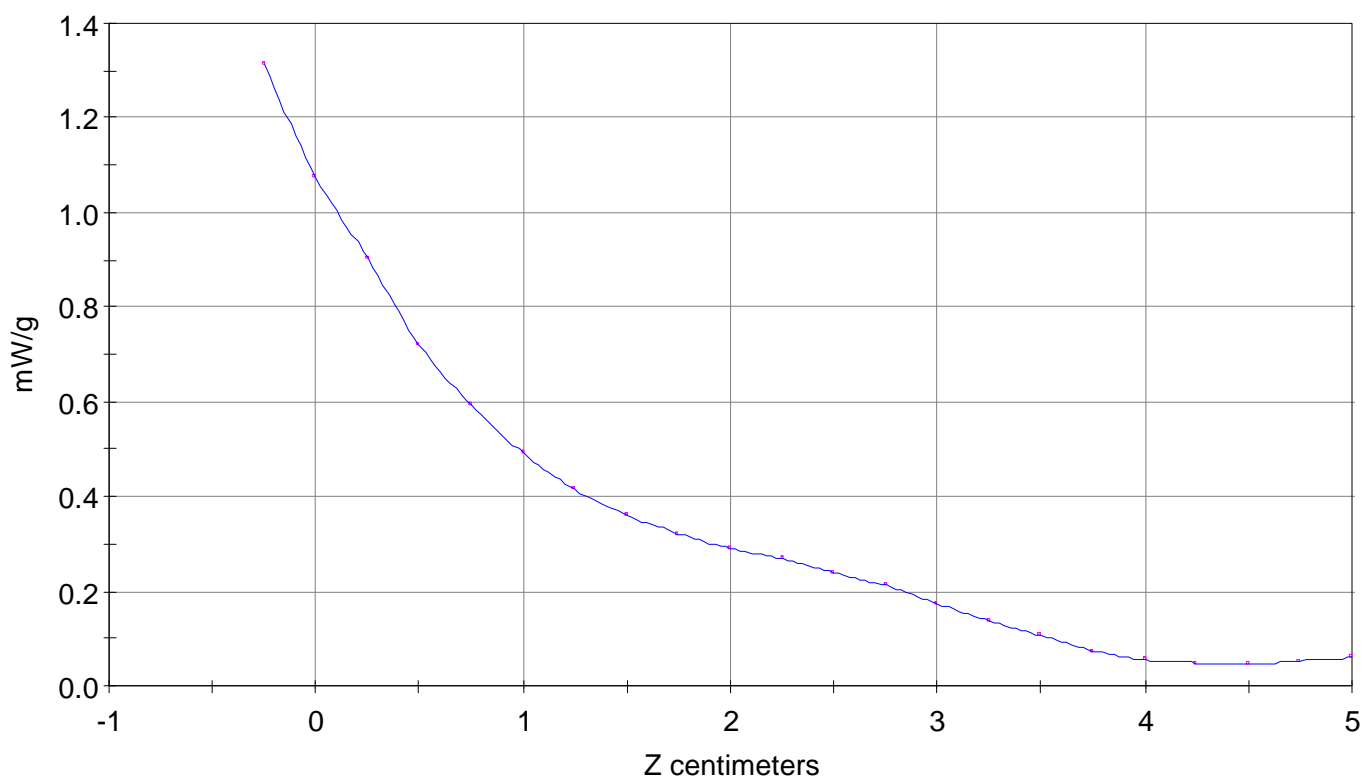
Calc. Voltage @ Surface (Vs) = 0.0180

Voltage @ 1.00 cm (Vt) = 0.0081

Ave. Voltage (Vs+Vt)/2 = 0.0130

Ave. SAR over 1 g (mW/g) = 0.9538

SAR Scan  
File : 99110233\_ZOOM  
Start : 02-Nov-99 04:27:04 pm End : 02-Nov-99 04:36:43 pm  
HYUNDAI/CKLHGC900/001;848.31MHz;W;Helical/Out;  
Body/Torso;ZOOM/SAR;PCTEST/E Field/0 DegreesMuscle/56.2/.95

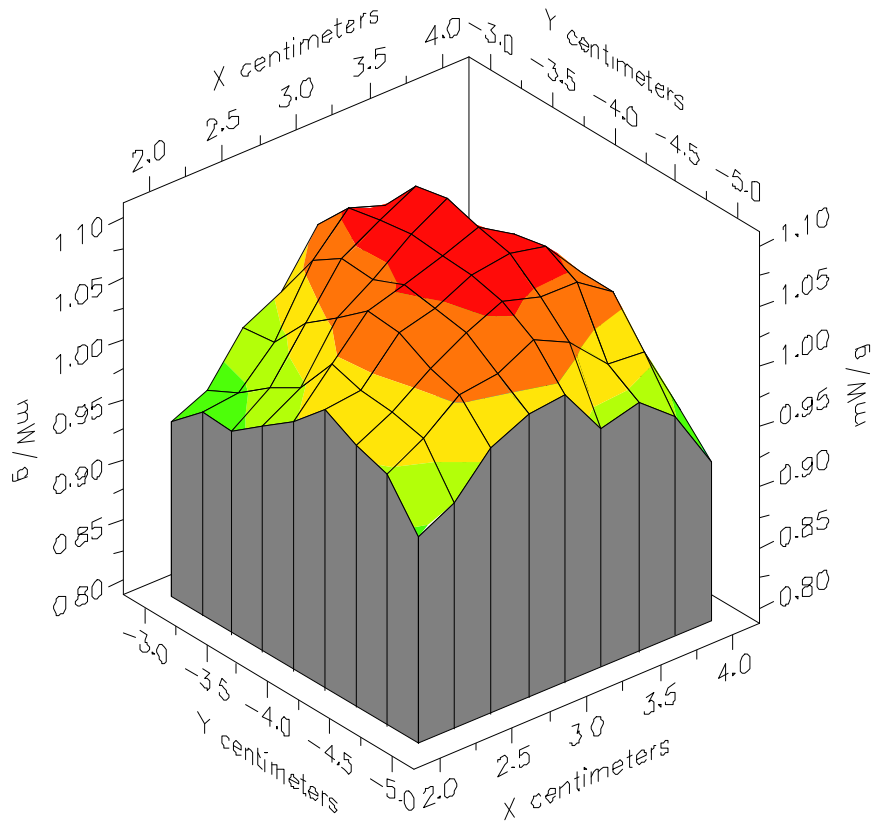


File :99110233\_ZOOM

Start : 02-Nov-99 04:27:04 pm End : 02-Nov-99 04:36:43 pm

HYUNDAI/CKLHGC900/001;848.31MHz;W;Helical/Out;

Body/Torso;ZOOM/SAR;PCTEST/E Field/0 DegreesMuscle/56.2/.95



File : 99110233\_ZOOM

Start : 02-Nov-99 04:27:04 pm End : 02-Nov-99 04:36:43 pm

HYUNDAI/CKLHGC900/001;848.31MHz;W;Helical/Out;

Body/Torso;ZOOM/SAR;PCTEST/E Field/0 DegreesMuscle/56.2/.95

