

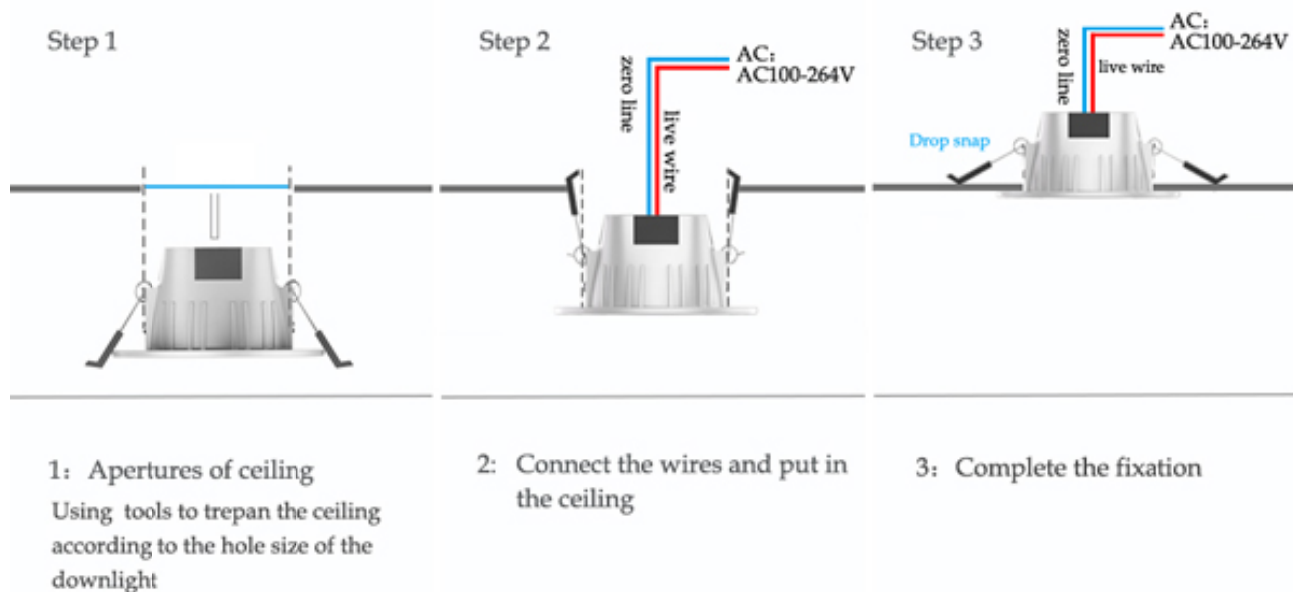
9W BT MESH BULB



Product parameters :

- | | |
|------------------------|--------------------|
| 1) Product model: | ZJ-MHDA-RGBWW |
| 2) Control principle: | BLUETOOTH |
| 3) APP name: | Hao Deng |
| 4) Suitable Phone OS: | Android 4.4/IOS9.0 |
| 5) Supported language: | Chinese, English |
| 6) Channel : | 5 (RGBCW) |
| 7) Power : | 9W |
| 8) Power factor : | 0.6 |

- | | |
|---|---|
| 9) Luminous : | 700LM |
| 10) Irritation angle : | 120° |
| 11) Color temperature : | 2700K-6500K |
| 12) Number of lamp beads : | RGB:5050-1.5W*6, WW:2835-1W*13, CW:2835-1W*13 |
| 13) Working temperature : | -20 TO +45 °C |
| 14) Control Distance: | No barrier, 30m |
| 15) Bulb Material : Lamp cover/Lamp body: | PC/ Aluminum |
| 16) Working Voltage : | 100-240VAC,50/60HZ |
| 17) Life hour : | 20000H |
| 18) Certificate : | / |
| 19) Scope of application : | Indoor lighting, |
| 20) Bulb dimension : | D:120mm H:45mm |
| 21) Hole dimension: | 95-100mm |
| 22) Box size : | 128*128*50mm |
| 23) N.W. : 153g | G.W. : 189.5g |
| 24) Specification : | 50PCS/Carton |
| 25) Carton Size : | 66.5*27.2*28CM |
| 26) G.W. /Carton : | 11KG |
| 27) Warranty: | 1 year |



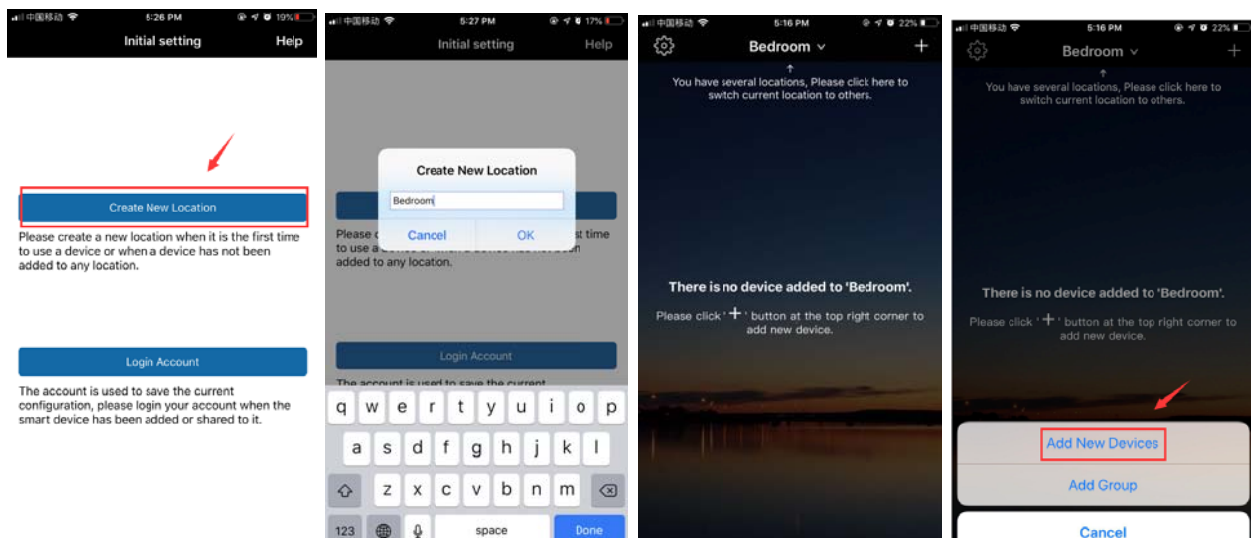
1. Download and install the APP

Use your phone to search for "Hao Deng" on the App Store or Google Play Store, or scan the QR code below to download it.

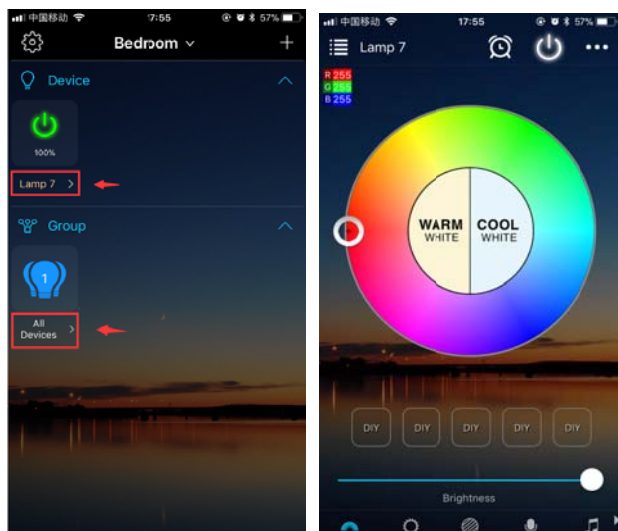


2. Add device(s) after turning the light and the Bluetooth on

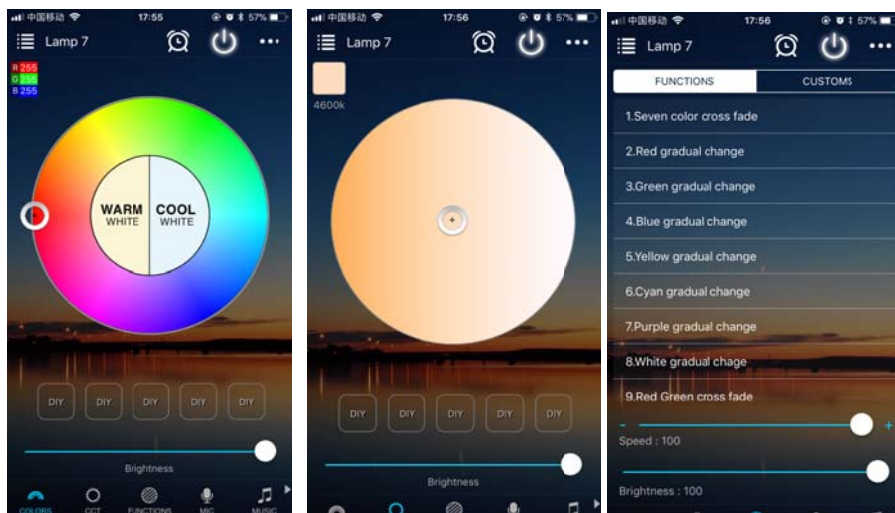
Open app to create new location and then add new device(s), please select the option that conforms to the device(s).

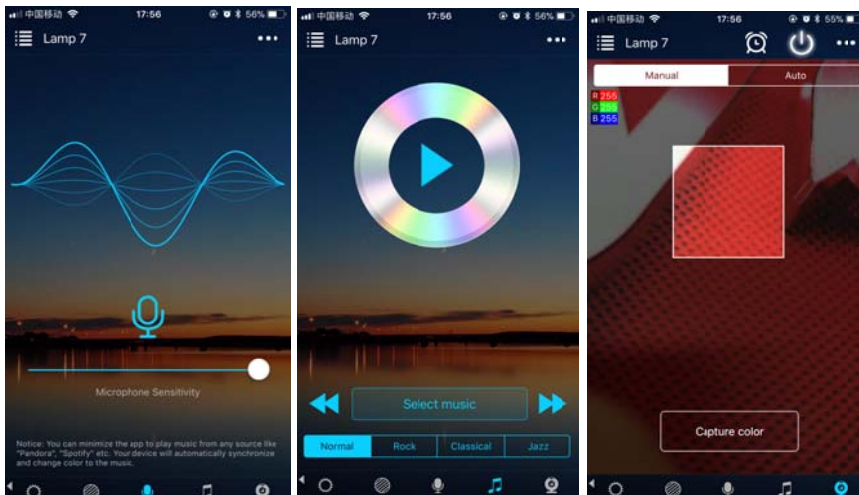


3. Click the name of device(s) to experience the App function



4. App function introduction





1) Support 16 million colors control and brightness adjustment

You Choose your favorite color and long press DIY button to save it. You can display this color and brightness for your need easier and faster next time.

2) Support color temperature control and brightness adjustment

Choose your favorite color temperature and long press DIY button to save it. You can display this color temperature and brightness for your need easier and faster next time.

3) Dynamic Mode

20 programmed built-in dynamic mode including colorful gradual change, cross fade jump change and strobe flash for your choices. Speed can be set.

And you can DIY the dynamic Mode.

4) Microphone Function

Lighting will change as per the volume/noise from outside like a microphone. It works when playing music with speaker. The lighting will dance based on different rhythm. The microphone sensitivity can be adjusted by the slider.

5) Music Function

Select your music songs in your smartphone and play them, lighting will dance based on the rhythm.

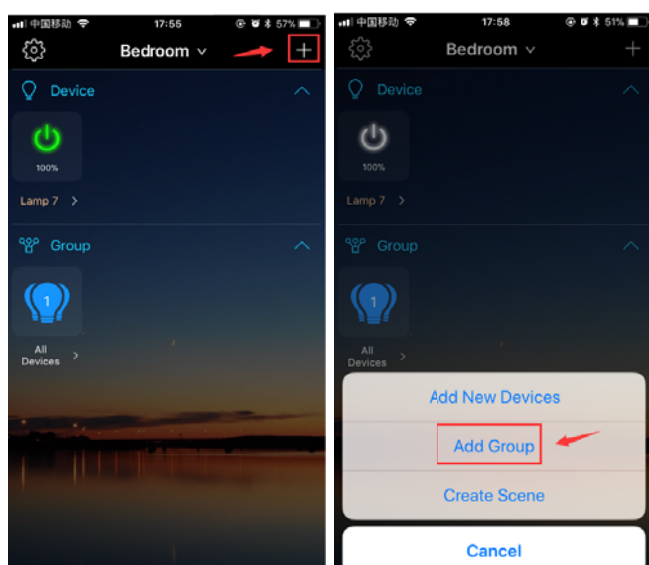
6) Camera Function

Manual mode : Capture color by hand and lighting will change to the color you select.

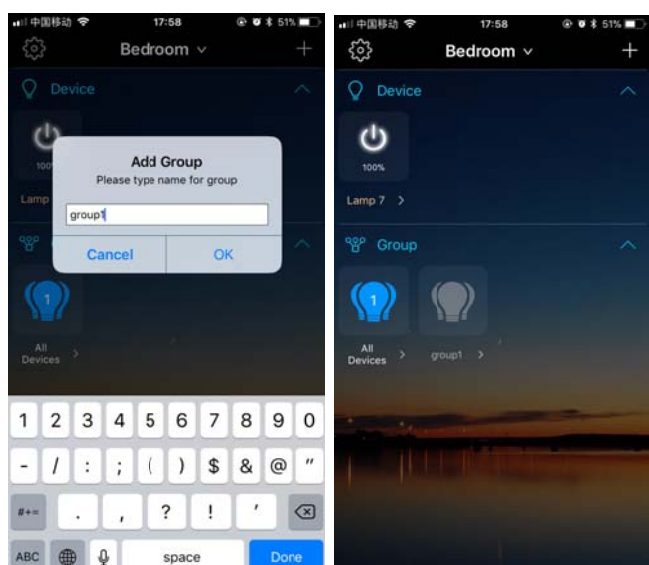
Auto mode : Lighting changes automatically when camera has a color.

7) Grouping operation

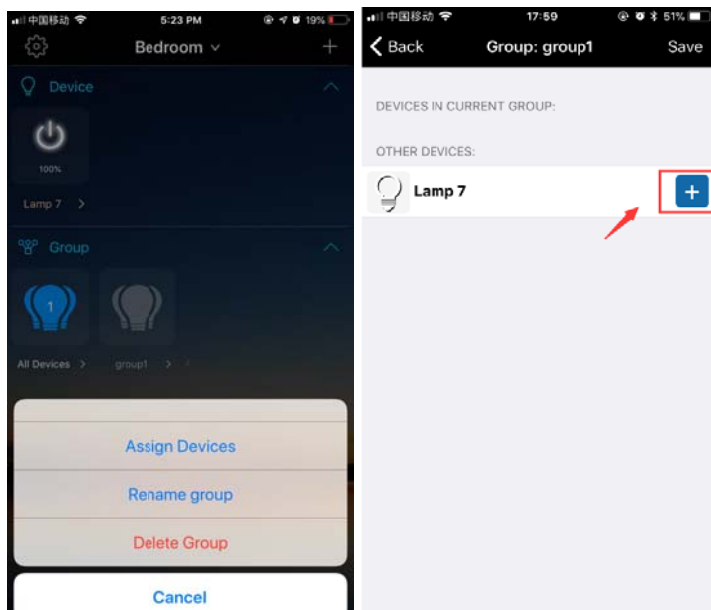
- Click the "+" at the top right corner and add new device(s).



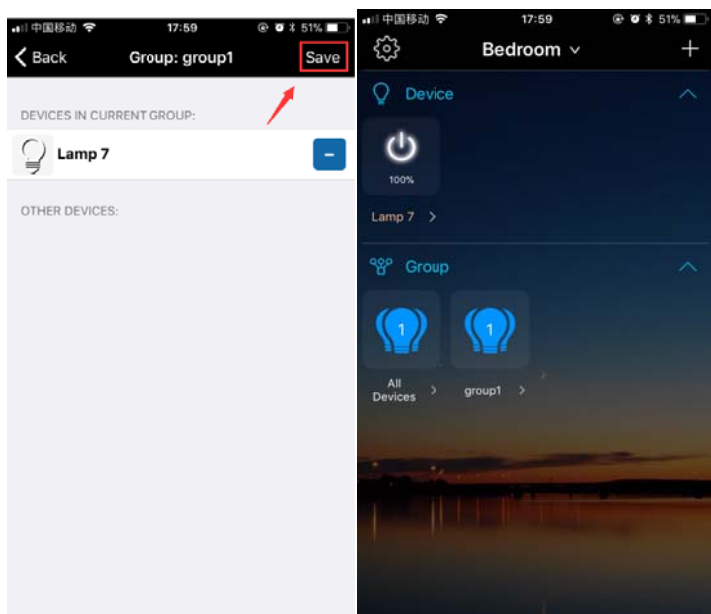
- Input the name of the group, which can be edited casually or according to the actual scene. Long press the name of the group to assign device(s).



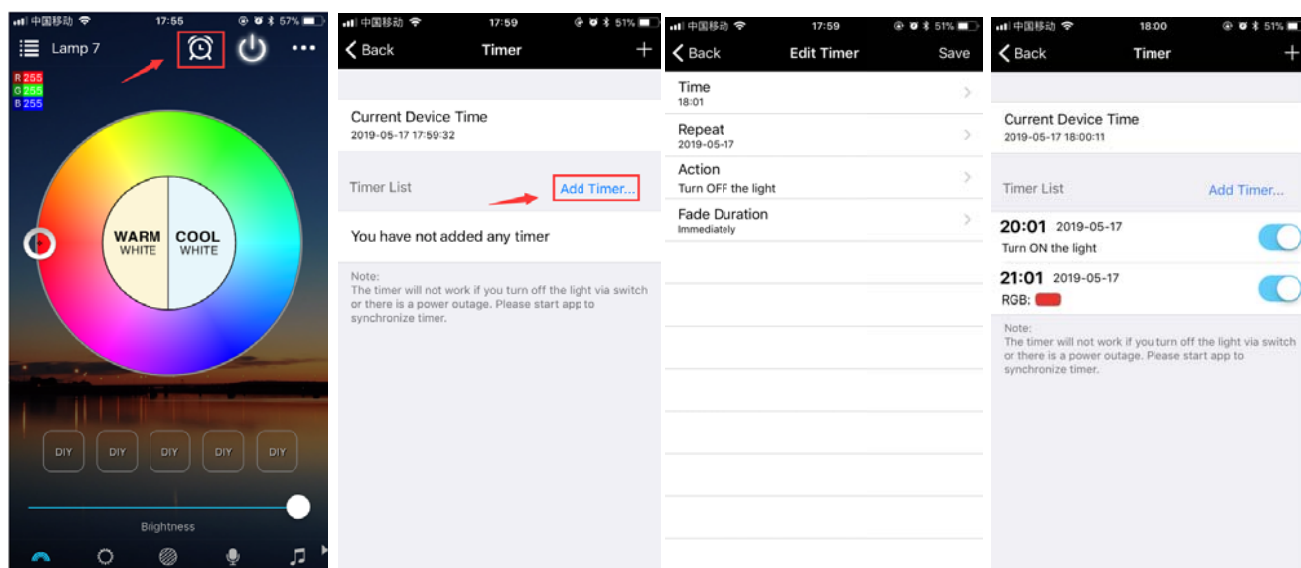
- Select "Assign Devices" and add the device(s) to the group.



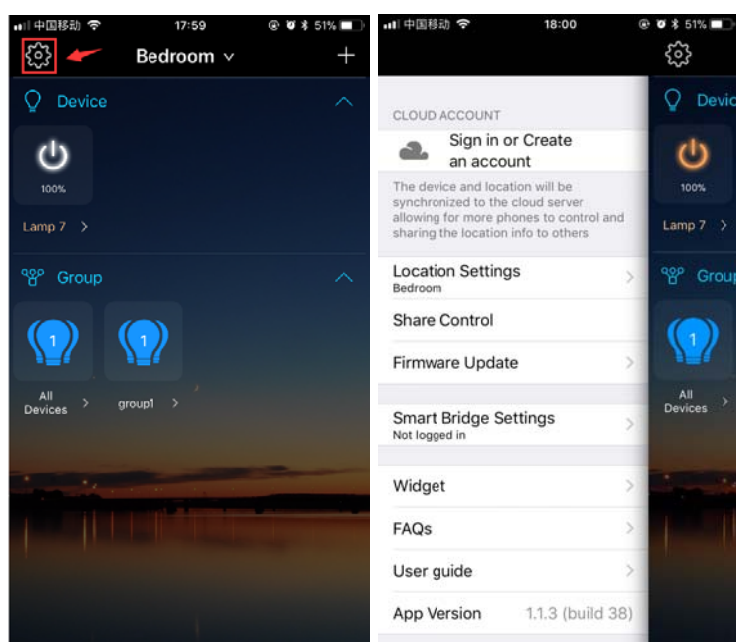
- Please save after adding the device(s).



8) Timer setting



9) Hidden functions



- **Sign in or Create an account:** new and old users can register or log in their accounts here.
- **Location Settings:** when there are multiple locations, you can choose to switch locations. And each location can be added up to 64 devices.
- **Share Control:** the person who be shared needs to download the APP and create an account. And then input the Email account which need to be shared.

- **Firmware Update:** if the device has new firmware, you can update the firmware version.
- **Smart Bridge Settings:** you need to purchase and configure smart bridge, which can make the device(s) realize remote control and can be controlled by amazon Alexa and Google assistant.
- **Widget:** In order to the control the device(s) more easily, you can add the device(s) to widget of phone.
- **FAQs:** you can find the methods which can help you to solve the problem you met.
- **User guide:** You can view the operation steps if it is your first time to log in the account.
- **APP Version:** it will show the current version.

How to restore the smart lighting to factory setting?

Please click: [How to restore the smart lighting to factory setting?](#)

How to get more Frequently Asked Questions?

Please click: [How to get more Frequently Asked Questions?](#)

ATTENTIONS

1. Please use the product in a dry environment.
2. Make sure the light power off before installing and you can power them on after installing.
3. Please don't touch the lights when your hands are wet to avoid electric shock.

FCC Statement

This equipment has been tested and found to comply with the limits for a Class B digital device, pursuant to part 15 of the FCC Rules. These limits are designed to provide reasonable protection against harmful interference in a residential installation. This equipment generates, uses and can radiate radio frequency energy and, if not installed and used in accordance with the instructions, may cause harmful interference to radio communications. However, there is no guarantee that interference will not occur in a particular installation. If this equipment does cause harmful interference to radio or television reception, which can be determined by turning the equipment off and on, the user is encouraged to try to correct the interference by one or more of the following measures:

- Reorient or relocate the receiving antenna.
- Increase the separation between the equipment and receiver.
- Connect the equipment into an outlet on a circuit different from that to which the receiver is connected.
- Consult the dealer or an experienced radio/TV technician for help.

Caution: Any changes or modifications to this device not explicitly approved by manufacturer could void your authority to operate this equipment.

This device complies with part 15 of the FCC Rules. Operation is subject to the following two conditions: (1) This device may not cause harmful interference, and (2) this device must accept any interference received, including interference that may cause undesired operation.

Radiation Exposure Statement

This equipment complies with FCC radiation exposure limits set forth for an uncontrolled environment. This equipment should be installed and operated with minimum distance 5mm between the radiator and your body.

This transmitter must not be co-located or operating in conjunction with any other antenna or transmitter.