

APPENDIX E: LABEL AND LABEL LOCATION

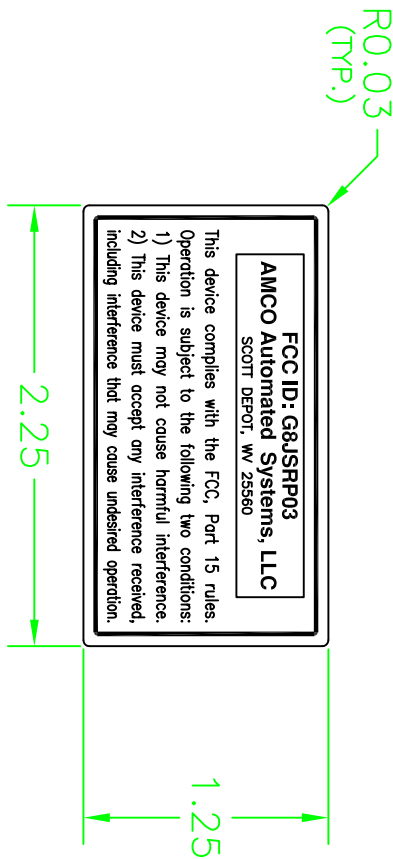


PHOTOGRAPH 2: LOCATION OF LABEL ON DEVICE

Please refer to the following page for the FCC ID label sample.

NOTE: LIGHT-GRAY BACKGROUND WITH BLACK LETTERING

REVISIONS		
REV	COMMENTS	DATE
1	CHANGED SRP FCC ID # FROM G8JSRP02	XX-XXX-XX



PRELIMINARY

MATERIAL: ADHESIVE BACKED WEATHER RESISTANT POLYESTER,
MATTE SILVER POLYESTER WITH 1 MIL CLEAR OVERLAM.

6					OLD DWG #	INTERPRET PER ANSI Y14.5 N.A.		
5					TOLERANCES-UNLESS OTHERWISE SPECIFIED			
4					INCHES	ANGLES± 1°	MILLIMETERS	
3					X±		X±	
2					.XX±	.02"	XXX±	
1	PP	XXX	XXX	XXX	.XXX±	.010"	X.XXX±	
REV	DRAFT	ENGR	CHKR	ECN #	DATE			
DRAWING REVISIONS					THIS DOCUMENT IS THE PROPERTY OF AMCO AUTOMATED SYSTEMS, AND ITS SUBSTANCE IS CONFIDENTIAL AND PROPRIETARY. THE CONTENTS HEREOF SHALL NOT BE PUBLISHED OR DISCLOSED TO OUTSIDE PARTIES OR USED FOR THEIR BENEFIT WITHOUT THE WRITTEN AUTHORIZATION OF AMCO AUTOMATED SYSTEMS.			
DWG. RELEASE ECN #:					634			
					107 ERSKINE LANE SCOTT DEPOT, WV 25560 TEL: 304 757-3300 FAX: 304 757-3388			
					TITLE: LABEL, FCC, SRP			
					PROJECT: SHORT RANGE PROGRAMMER			
					DRAFT: PP 10-APR-00		DRAWING NUMBER	
					ENGR: DJ 11-APR-00		52806P025	
					CHKR: DA 11-APR-00		SCALE: NTS	
					SIZE: A		SHEET: 1 OF 1	