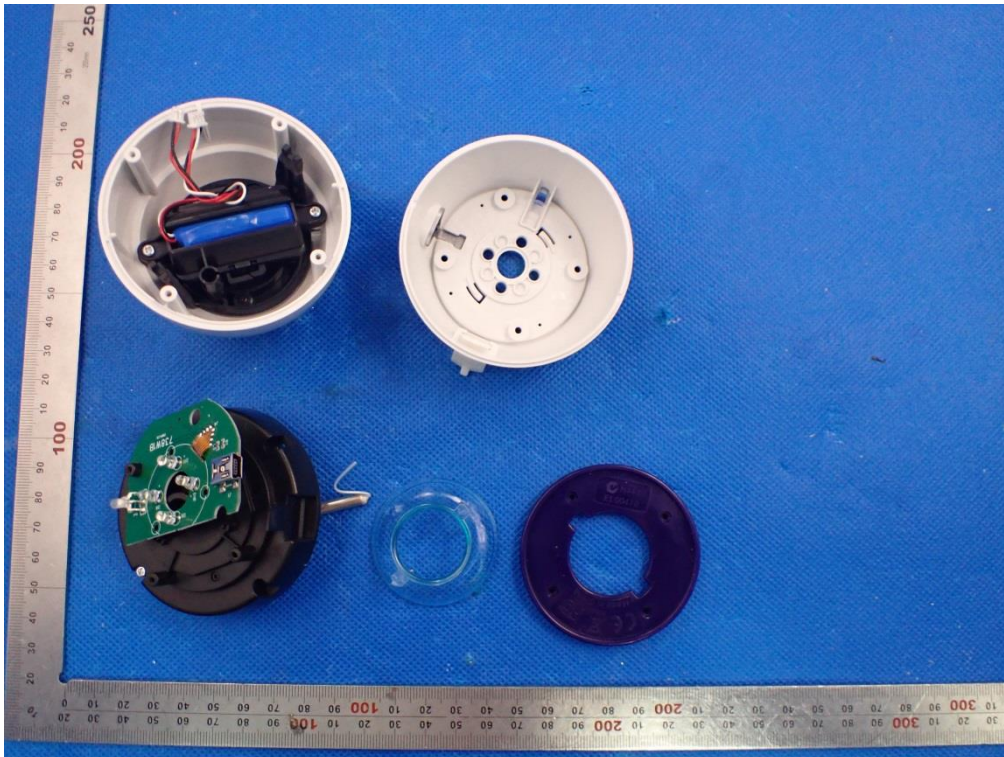
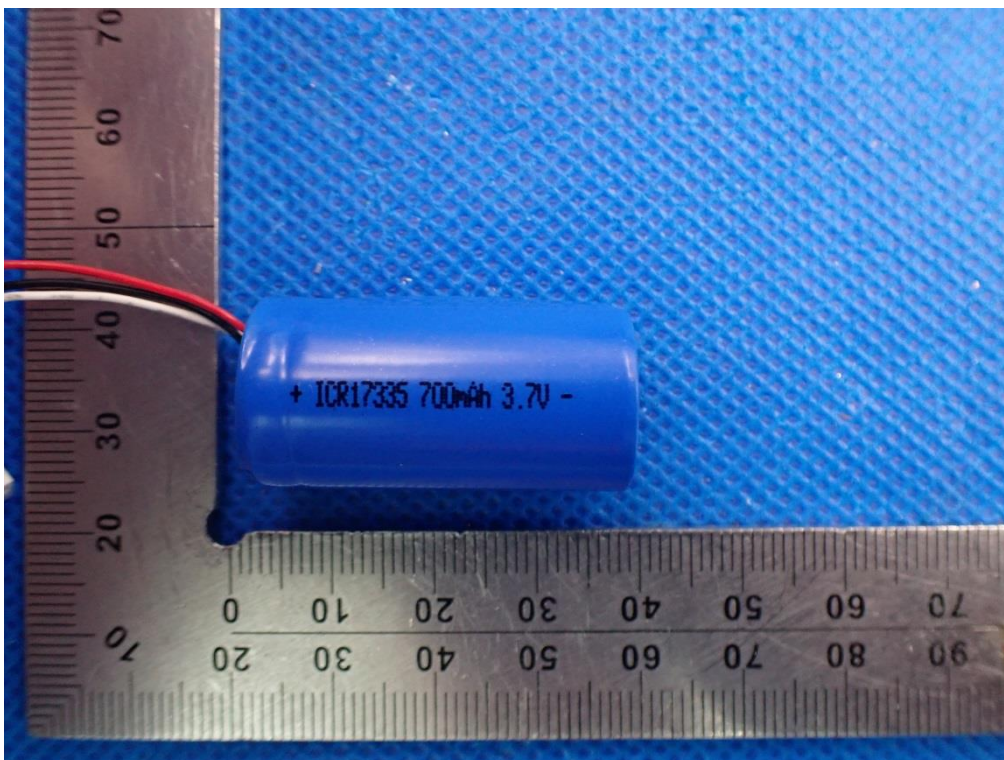


Internal Photos

OPEN VIEW OF EUT

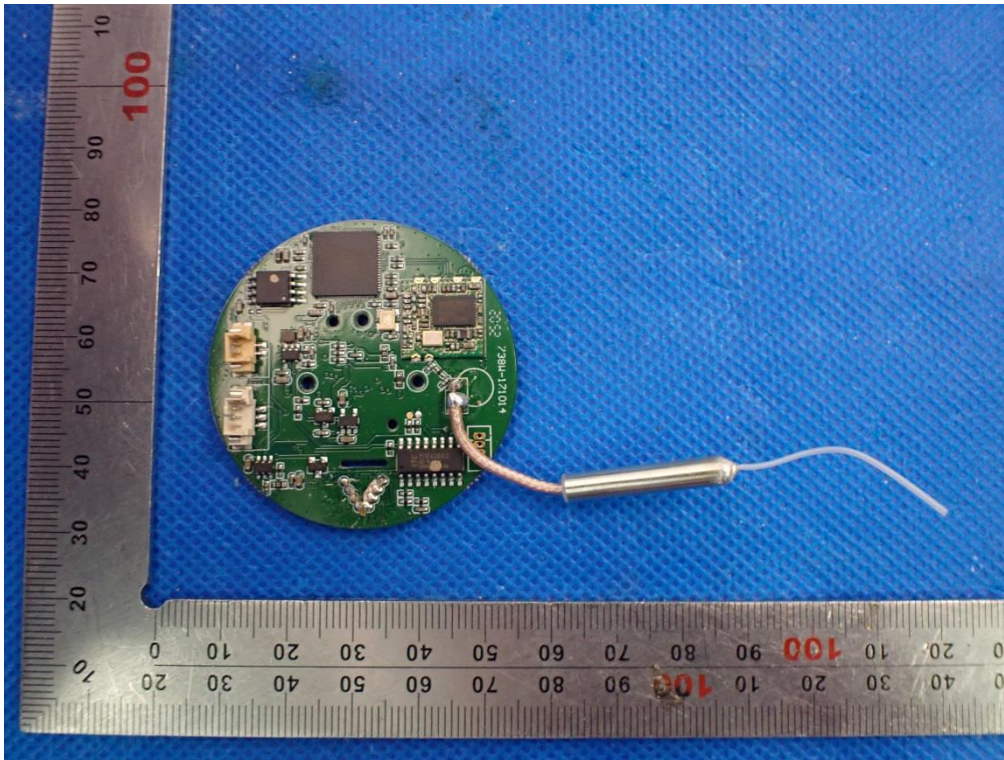


VIEW OF BATTERY

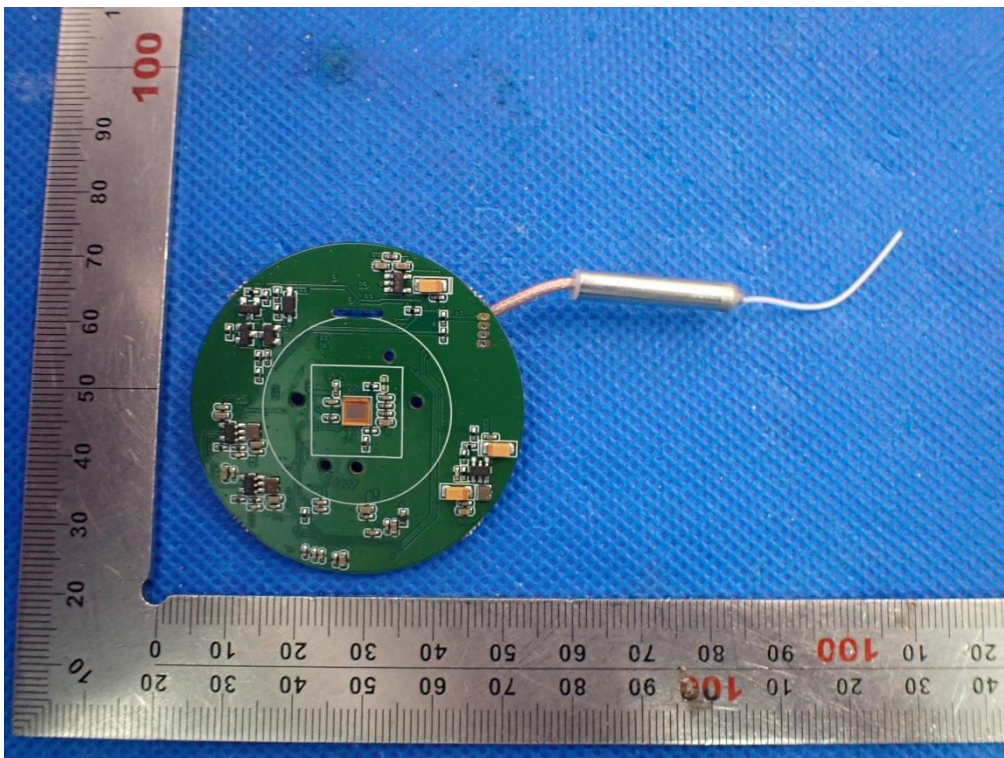


A photograph of a custom green PCB, likely a USB-to-serial adapter or a similar interface board. The board is semi-circular with a central circular cutout. It features a USB Type-A connector (J1) on the right side, a 5mm LED (D8) on the left side, and a 12-pin header (J2) on the right side. The board is marked with '738W1B' and '200430'. It is placed on a blue textured surface with a metal ruler for scale.

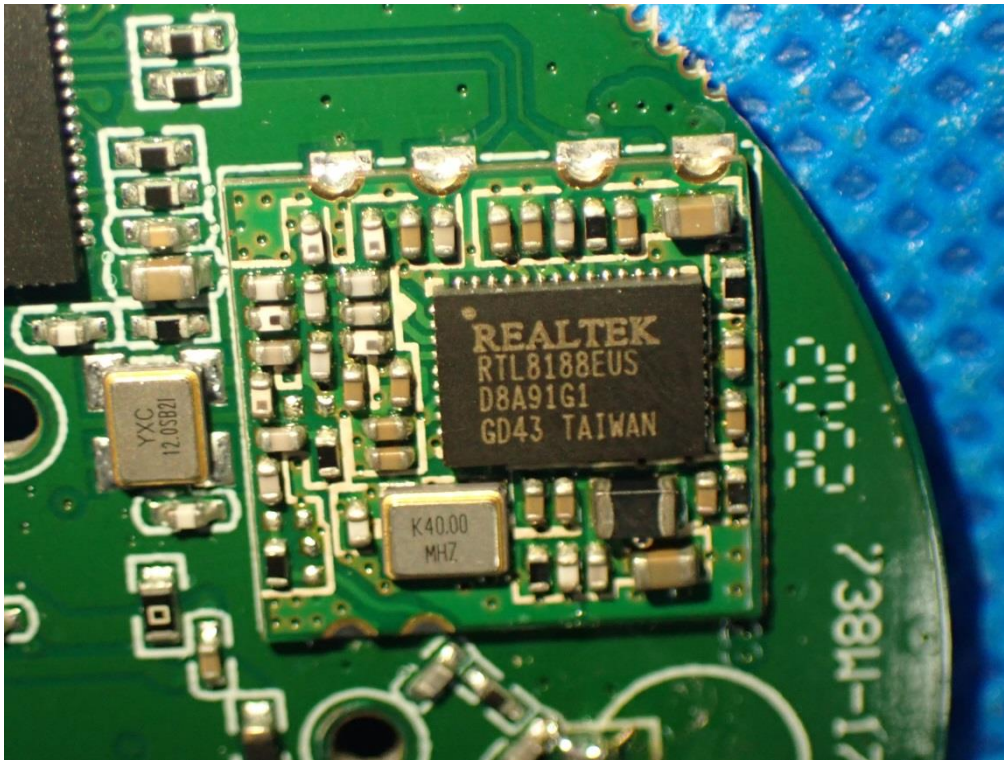
INTERNAL VIEW-3 OF EUT



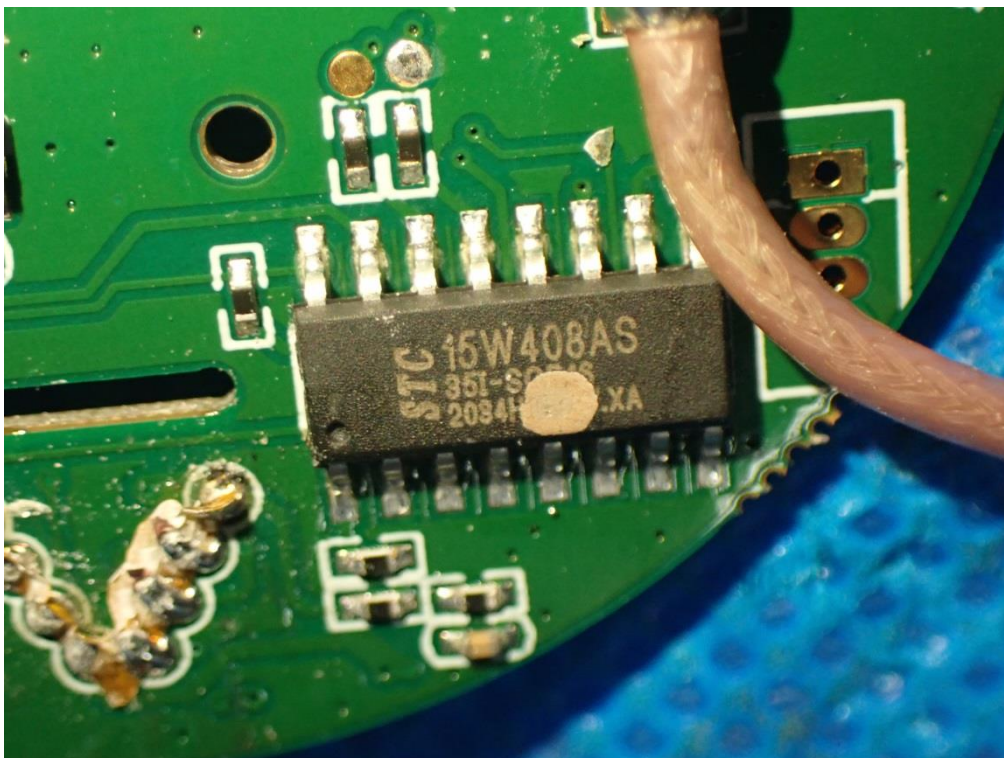
INTERNAL VIEW-4 OF EUT



INTERNAL VIEW-5 OF EUT



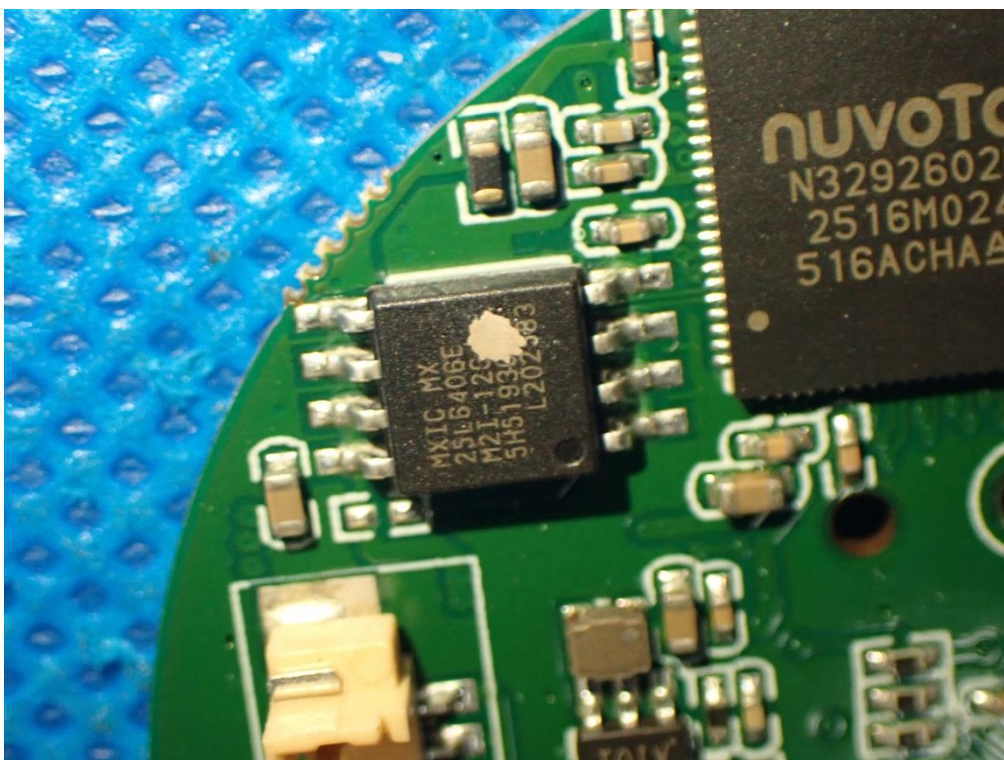
INTERNAL VIEW-6 OF EUT



INTERNAL VIEW-7 OF EUT



INTERNAL VIEW-8 OF EUT



INTERNAL VIEW-9 OF EUT

