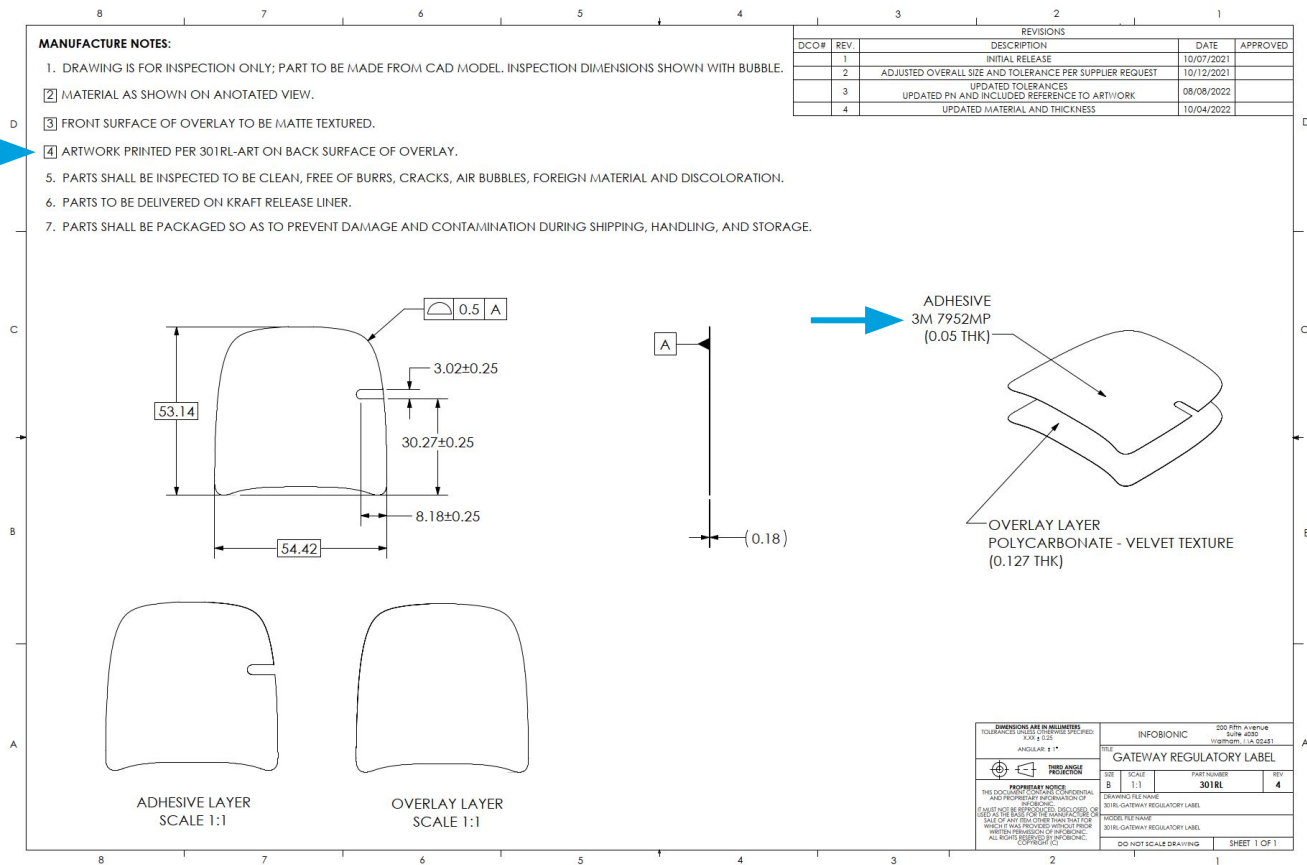


Gateway

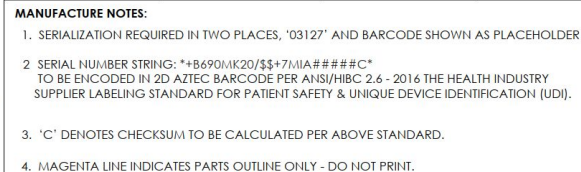
Label Construction

- Graphics indelibly printed on back (internal) surface of clear polycarbonate
- Permanent adhesive backing

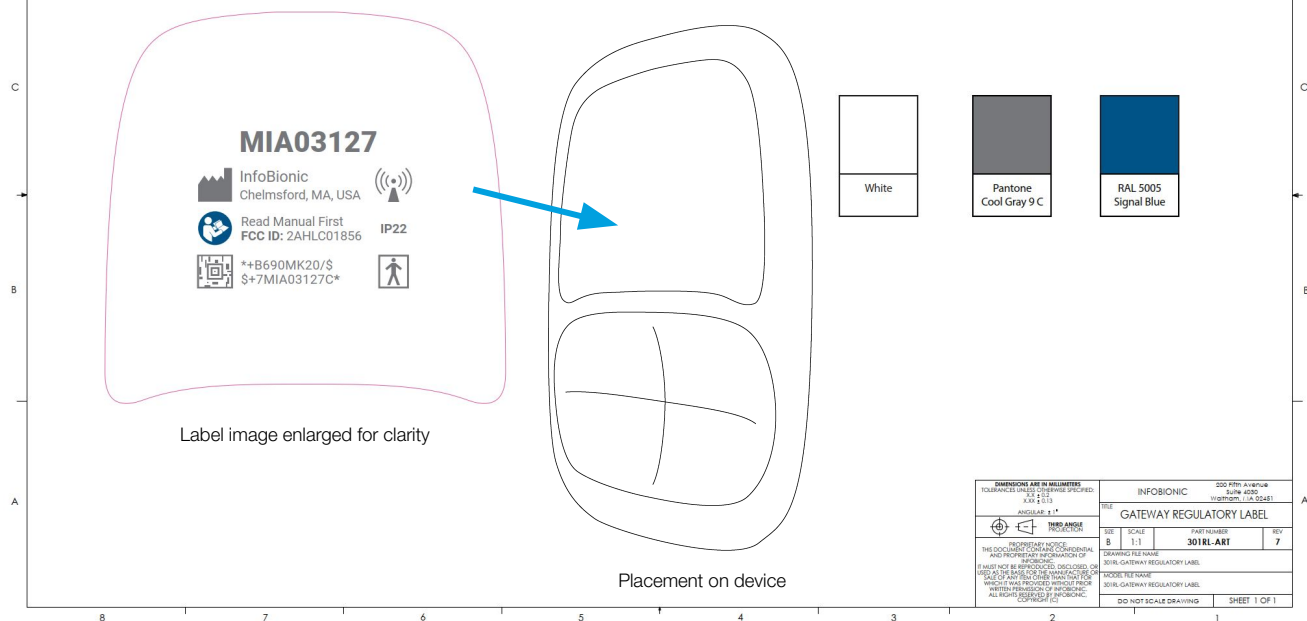



Label Graphics and Placement

- Graphics as shown, serialized
- Adhered into a matching recess with permanent adhesive



REVISIONS				
DCOF#	REV.	DESCRIPTION	DATE	APPROVED
TBD	1	INITIAL RELEASE	10/06/2021	
TBD	2	UPDATE SIZE AND COLORS	10/20/2021	
TBD	3	REMOVED "MOMIE K3"	07/26/2022	
TBD	4	UPDATED READ MANUAL ICON	11/03/2022	
TBD	5	UPDATED MFG ICON, PLACEHOLDER SERIAL NUMBER	01/17/2023	
TBD	6	UPDATED MFG LOCATION	03/14/2023	
TBD	7	UPDATED FCC ID	10/09/2023	



MEASUREMENTS ARE IN MILLIMETERS DIMENSIONS ARE IN INCHES TOLERANCES ARE: XX ± 0.1 XXX ± 0.2 ANGULAR ± 1°		INFOBONIC 200 Fifth Avenue Suite 4200 Washington, DC 20001	
 FIRST ANGLE PROJECTION		GATEWAY REGULATORY LABEL	
PROPRIETARY NOTICE: THIS DOCUMENT CONTAINS INFORMATION OF A CONFIDENTIAL NATURE. IT IS NOT TO BE REPRODUCED OR USED AS THE BASIS FOR THE MANUFACTURE OF ANY PARTS OR EQUIPMENT WITHOUT THE WRITTEN PERMISSION OF INFOBONIC. ALL RIGHTS RESERVED. (C) 1997 INFOBONIC		SIZE: B SCALE: 1:1 PART NUMBER: 301R-AKT 301R-GATEWAY REGULATORY LABEL	REV: 7 301R-AKT 301R-GATEWAY REGULATORY LABEL
		MODEL FILE NAME: 301R-GATEWAY REGULATORY LABEL	DO NOT SCALE DRAWING SHEET 1 OF 1