

FCC Statement

This device complies with part 15 of FCC Rules. Operation is subject to the following two conditions: (1) this device may not cause harmful interference, and (2) this device must accept any interference received, including interference that may cause undesired operation. This equipment has been tested and found to comply with the limits for a Class B digital device, pursuant to part 15 of FCC Rules. These limits are designed to provide reasonable protection against harmful interference when the equipment is operated in a residential installation. The equipment generates, uses, and can radiate radio frequency energy and, if not installed and used in accordance with the instruction guide, may cause harmful interference to radio communications. However, there is no guarantee that interference will not occur in a particular installation. If this equipment does cause harmful interference to radio or television reception, which can be determined by turning the equipment off and on, the user is encouraged to try to correct the interference by one or more of the following measures:

- Reorient or relocate the receiving antenna.
- Increase the separation between the equipment and the receiver.
- Connect the equipment into an outlet on a circuit different from that to which the receiver is connected.
- Consult a service representative for help.

Properly shielded and grounded cables and connectors must be used in order to comply with FCC emission limits. LifeWorks is not responsible for any radio or television interference caused by using other than recommended cables and connectors or by unauthorized changes or modifications to this equipment. Unauthorized changes or modifications could void the user's authority to operate the equipment.

Responsible party:
LifeWorks Technology Group LLC
530 7th Ave, New York, NY 10018

Mouse Devices: Health Warning

Use of a mouse may be linked to serious injuries or disorders. As many activities when using a computer you may experience occasional discomfort in various parts of your body. However, do not ignore symptoms such as persistent or recurring discomfort, pain, tingling, aching, itching, numbness, burning sensation or stiffness. Promptly seek a qualified doctor even if numbness occur when you are not working at your computer.

There is general consensus among researchers that there may be many factors linked to the occurrence of these symptoms, including overuse, health stress, physical condition and how a person positions and uses his or her body during work and other activities including the use of a keyboard or mouse). The amount of time a person spends performing an activity may also be a factor.

If you have questions about how your own lifestyle, activities or physical condition may be related to these symptoms, see a qualified health professional.

Battery/Powered Devices

Use of rechargeable or disposable batteries in an improper manner may result in battery fluid leakage, overheating or explosion. Battery fluid is corrosive, can cause skin and eye burns, and is harmful if swallowed. Radio Frequency Technical Specifications: 2.4 GHz Devices: Non-specific short range devices, RF output power meets all SDR requirements.

Warning: Improper setup, use and care of this product can increase the risk of serious injury, death or device damage. Read and keep this guide and all other printed guides for future reference. For updated guides or recommendations go to golflife.com

Do Not Attempt Repairs: Do not attempt to take apart, open, repair, service or modify the device(s). Doing so may risk electric shock or other hazards. Exposure of any attempt to open or modify the device, including any peeling, puncture or removal of labels, will void the Limited Lifetime Warranty.

Printed in China
© 2019 LifeWorks Technology Group LLC
Windows is a registered trademark of Microsoft Technology Group.
Windows, 2000, XP, Vista, Windows 7, and Windows 8 are registered trademarks or trademarks of Microsoft Corporation in the United States and/or other countries.
Mac is a trademark of Apple Inc., registered in the U.S. and other countries.
All other brands and logos are trademarks of their respective companies.

technical support
for technical support please visit
www.iHomeCases.com/warranty
or call (877) LIFE-540 (877-543-3540)

lifetime warranty
for warranty information, please visit
www.iHomeCases.com/warranty

for model number(s)
IH-M2050

document version number 100413-0



Congratulations on the purchase of your new iHome wireless desktop mouse

This product comes with a limited lifetime warranty.

Before using your product, please thoroughly read and follow the instructions inside this manual.

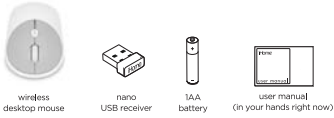
If you still need help, see the back page for other support options.

If you want to know more about our products, visit us online at www.golflife.com

system requirements

- Mac OS X v10.0 or later
- Windows 2000/XP/Vista/Windows 7/Windows 8/Windows 10
- USB port

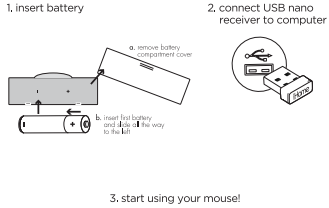
your package should contain



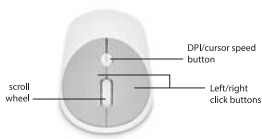
features

- easy auto sync
- high performance optical sensor, ideal for everyday use
- power-saving on-off switch
- nano receiver

set up mouse



product operating tips



- Press the cursor speed button to adjust the speed of your mouse.
- The scroll wheel is also a button. Press the scroll wheel (without rolling it) to automatically scroll a document or web page, then move your mouse up or down to set the automatic scroll speed.
- Use the internet page forward and back buttons to switch between recently visited web sites.

troubleshooting

situation	try this
mouse does not work	<ul style="list-style-type: none">• Ensure that the mouse is turned on.• Ensure the USB nano receiver is connected to your computer. If it is, try connecting it to a different USB port.• Ensure that the batteries are charged and inserted correctly.• Ensure that the sensor on the bottom of the mouse is clean.• Restart your computer.

NOTE: This equipment has been tested and found to comply with the limits for a Class B digital device, pursuant to part 15 of the FCC Rules. These limits are designed to provide reasonable protection against harmful interference in a residential installation. This equipment generates uses and can radiate radio frequency energy and, if not installed and used in accordance with the instructions, may cause harmful interference to radio communications. However, there is no guarantee that interference will not occur in a particular installation. If this equipment does cause harmful interference to radio or television reception, which can be determined by turning the equipment off and on, the user is encouraged to try to correct the interference by one or more of the following measures:

- Reorient or relocate the receiving antenna.
- Increase the separation between the equipment and receiver.

-Connect the equipment into an outlet on a circuit different from that to which the receiver is connected.

-Consult the dealer or an experienced radio/TV technician for help

Changes or modifications not expressly approved by the party responsible for compliance could void the user's authority to operate the equipment. This device complies with Part 15 of the FCC Rules. Operation is subject to the following two conditions:

(1) this device may not cause harmful interference, and

(2) this device must accept any interference received, including interference that may cause undesired operation.

展开尺寸：254X190mm
单黑双面印刷

展开尺寸：254X190mm
单黑双面印刷