

PLEASE NOTE:

This equipment has been tested and found to comply with the limits for a Class B digital device, pursuant to Part 15 of the FCC Rules. These limits are designed to provide reasonable protection against harmful interference in a residential installation. This equipment generates, uses and can radiate radio frequency energy and, if not installed and used in accordance with the instructions, may cause harmful interference to radio communications. However, there is no guarantee that interference will not occur in a particular installation. If this equipment does cause harmful interference to radio or television reception, which can be determined by turning the equipment off and on, the user is encouraged to try to correct the interference by one or more of the following measures:

- Reorient or relocate the receiving antenna
- Increase the separation between the equipment and receiver
- Connect the equipment into an outlet on a circuit different from that to which the receiver is needed.
- Consult the dealer or an experienced radio/TV technician for help

TROUBLE SHOOTING

Problems	Reasons	Solution
Running problems	The alkaline battery inside the radio control is too weak.	Replace with new alkaline batteries.
	There is a weak or low reception for the radio control.	
Operation problems	A small object obstructs movement of the tire or axle.	Use tweezers or a paper clip to remove obstruction.
	The vehicle was driven on the carpet and has fabric threads caught in the axle.	Playing on the carpet is not recommended.
Other	The vehicle does not respond to the radio control.	Try playing at another location.
	The radio control's frequency is disrupted by something around the environment.	Some other equipment using the same radio wave could disrupt the radio control. Either play in another location or turn off other equipment. If you are planning to race your vehicles with another friend, purchase vehicles with 2 different frequencies (49MHz and 27MHz) to avoid disruption.

INSTRUCTION MANUAL



ITEM NO. 3325
/3326/3327

"WE ARE NOT A CAR RACING COMPANY"

Manufactured and distributed by
Planet Toys, Sarasota, FL 34242
Made in China

Colors and contents may vary
Keep content details for future reference

TM & © 2004 West Coast Choppers, Inc.
All Rights Reserved. Manufactured and used under
license from Vanilla Gorilla L.P.



***IMPORTANT - IF CAR DOES NOT RESPOND
PROPERLY, PLEASE REPLACE
BATTERIES (4 x AA).**

****NOTE: THE MANUFACTURER IS NOT RESPONSIBLE
FOR ANY RADIO OR TV INTERFERENCE CAUSED BY
UNAUTHORIZED MODIFICATIONS TO THIS EQUIPMENT.
SUCH MODIFICATIONS COULD VOID THE USER'S
AUTHORITY TO OPERATE THE EQUIPMENT.**

WARNING:

Changes or modifications to this unit not expressly approved by the party responsible for compliance could void the user's authority to operate the equipment.

This device complies with part 15 of the FCC rules. Operation is subject to the following two conditions:

1. This device may not cause harmful interference, and
2. This device must accept any interference received, including interference that may cause undesired operation of the device.

CONSUMER SERVICE

Please do not return to store!
For parts information, or questions please call:

1-877-FUN-TOYS
For a universe of fun visit
www.planettoysltd.com

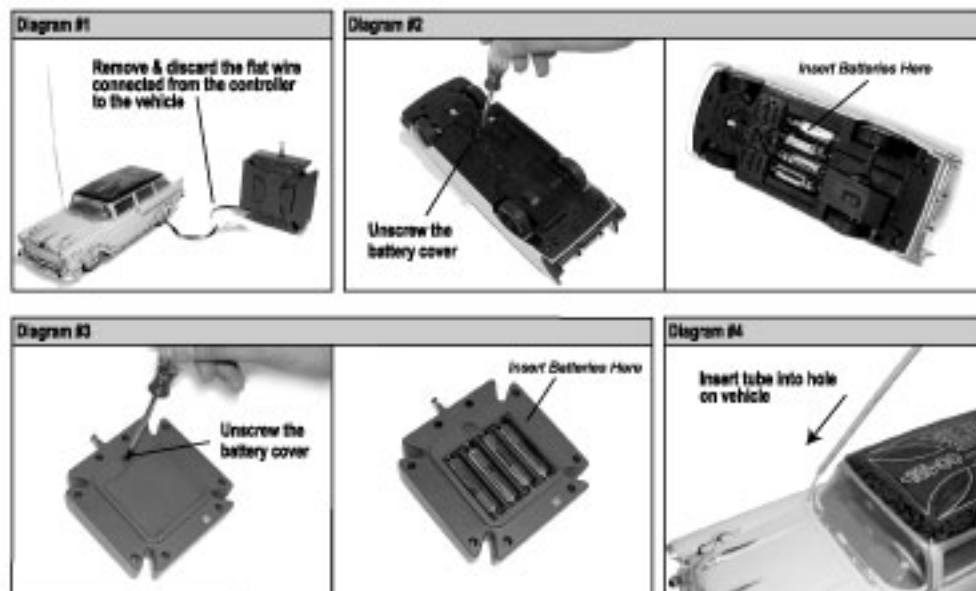
START UP

Remove & discard the flat wire connected from the controller to the vehicle (see diagram #1).

Unscrew and remove the battery covers on both the controller and the R/C car. Insert 4 "AA" batteries (not included) into the RC car and 4 "AA" batteries (included) into controller unit. Then replace the battery covers and tighten the screws (see diagram #2 & #3).

Push antenna wire through hollow antenna tube which is packed within the window box. Insert tube into hole on vehicle and a knot may be tied at the top, but don't pull wire tight (see diagram #4).

* The batteries included in the controller are for demonstration only.



PLEASE NOTE:

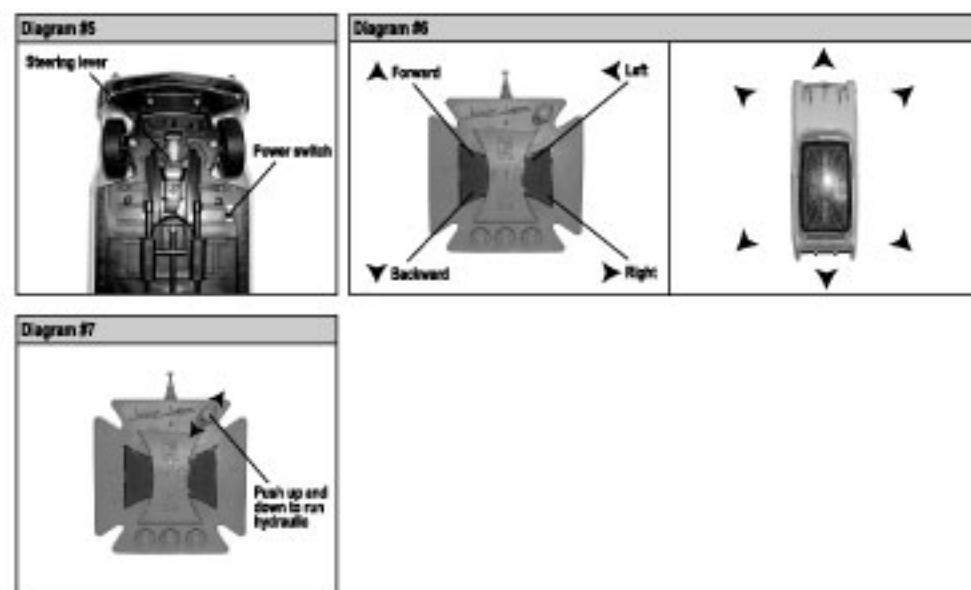
- Make sure the batteries have been inserted correctly (+ or -) into car and controller.
- If the car does not respond properly, please replace the alkaline batteries in the car and/or controller batteries.

NOTE:

- Do not mix old and new batteries
- Do not mix alkaline, standard (carbon zinc), or rechargeable (nickel-cadmium) batteries.

OPERATING THE CAR

- Turn the power switch to "ON" (see diagram #5).
- Press the WCC Maltese (see diagram #6) to drive your vehicle in all directions.
- Push the right lever to run hydraulic. (see diagram #7)
- Adjust the fine tune steering lever located under the vehicle to keep it moving straight (see diagram #5)
- After use, turn "OFF" the vehicle.
- If the vehicle is to be "parked" for a relatively long time, remove all batteries from the vehicle and the R/C controller.



Model No. : FCC ID: QG33325T27

Planet Toys Worldwide Ltd.

1107 Chinachem Golden Plaza,
77 Mody Road,
Tsimshatsui East
Kowloon, Hong Kong



Phone: (852) 2311 8697
Fax: (852) 2311 7711

POWER OF ATTORNEY

DATE: 29th April, 2004

Federal Communications Commission
Authorization and Evaluation Division
7435 Oakland Mills Road
Columbia, MD 21046

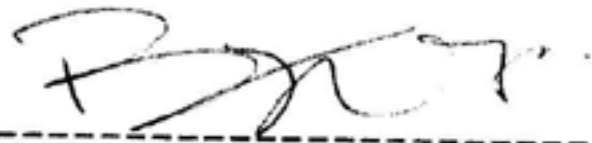
To Whom It May Concern:

We, the undersigned, hereby authorize TIMCO ENGINEERING, INC. on our behalf, to apply to the Federal Communications Commission on our equipment. Any and all acts carried out by TIMCO ENGINEERING, INC. on our behalf shall have the same effect as acts of our own. This authorization expires on 29th, Jul 2004.

This is to advise that we are in full compliance with the Anti-Drug Abuse Act. We, Planet Toys Worldwide Ltd., are not subject to a denial of federal benefits pursuant to Section 5301 of the Anti-Drug Act of 1988, 21 USC853a, and no party to the application is subject to a denial of federal benefits pursuant to that section.

Sincerely,

Planet Toys Worldwide Ltd.



T.K. Wong / Planet Toys Worldwide Ltd.
Merchandise Manager

MANUFACTURER: Root Land Plastic & Electronic Products Co. Ltd.
Bai Yun Keng Industrial Area, Tu-Hu,
Danshui Town of Hui Yang City, China.