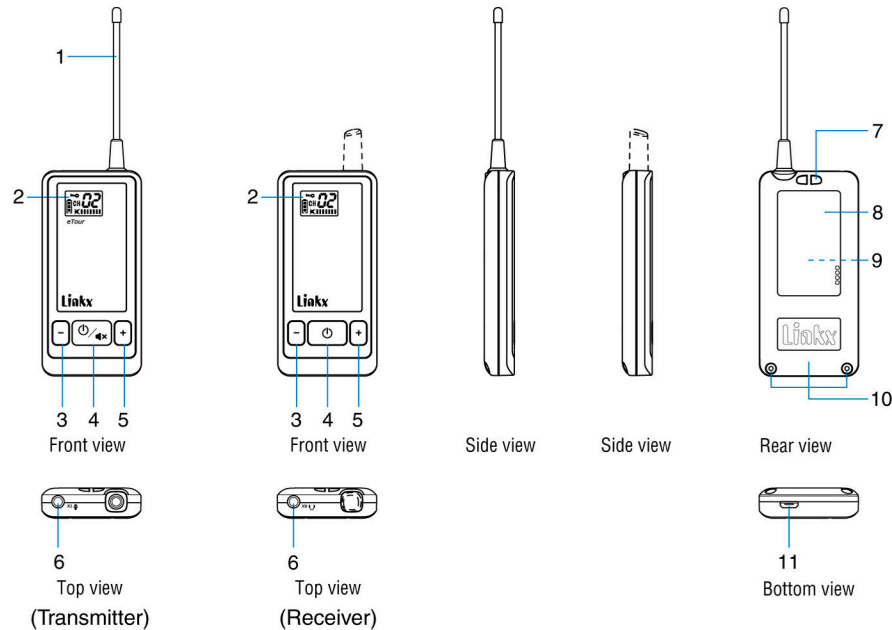
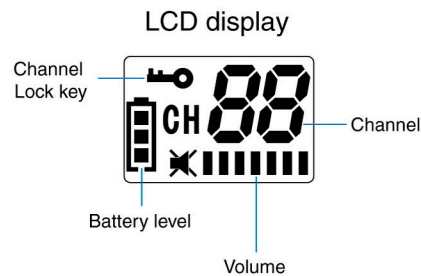


## Diagram and Instructions



1. Antenna (for Transmitter TG-300T only)
2. LCD display
3. Down button for channel and volume adjustment
4. On / Off / Mute / Set button — Transmitter  
additional function for TG-300T: ✖ to mute the audio signal
- On / Off / Set button — Receiver
5. Up button for channel and volume adjustment
6. Microphone input for Transmitter  
Earphone output for Receiver
7. Lanyard connection point
8. Label area
9. Battery compartment and built-in Li-polymer battery
10. Lid of battery compartment and screws
11. Micro-USB charging port



## LCD Display Illustration

	TG-300T Transmitter	TG-300R Receiver		TG-300T Transmitter	TG-300R Receiver
	Channel Lock			—	No signal received
	Channel change				100% battery remaining
	Mute/Mic disconnect	Mute			70% battery remaining
	level 4 microphone volume	level 4 earphone volume			30% battery remaining
					10% battery remaining

## Operating Instructions

### Microphone and Earphone Connection

- Connect the microphone / headset to the 3.5mm socket on the transmitter and the earphones to the 3.5mm socket on the receiver. Make sure the connectors are properly inserted in place.

### Power On and Off

- Press and hold the power button / for 2 seconds to turn on the system. The LCD display will illuminate and retrieve the channel number used last time to indicate Power on successfully.
- Press and hold the power button / for 2 seconds. The LCD display will disappear to indicate Power off completely.

Note :

- Energy saving- Receiver will automatically power off if no signal is received after about 20min.

### How to select a channel

- The channel is preset to CH 01. If you wish to select a different channel, press and buttons simultaneously for 2 seconds. The CH sign starts flashing and icon is removed to indicate channel escape from lock mode. Press or button to select your desired channel. Press / button briefly to confirm the selected channel or wait for approximately 5 seconds to automatically store and lock the selected channel. CH will stop flashing and LCD displays icon. System now returns to lock mode.

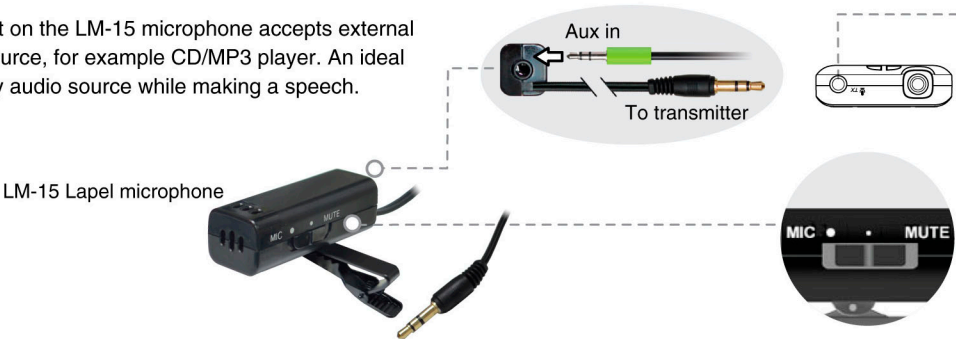
Note :

- Make sure that the transmitter and receiver(s) operate on the same channel. The receiver display will keep flashing when no transmission signal is being received.
- System will retrieve the channel number used previously.

How to adjust the Volume

Transmitter: Using LM-15 Lapel microphone

- The Aux input port on the LM-15 microphone accepts external line-level audio source, for example CD/MP3 player. An ideal tool for you to play audio source while making a speech.



- Connect LM-15 microphone to the 3.5mm socket on the transmitter
- Transmitter volume is preset at level 4 ◀■■■■
- Press or button to decrease or increase the volume level. There are 4 adjustable levels from ◀■■■■ to ◀■■■■■■■
- Press mute button briefly to mute the transmitter, press the same button once again to recover.
- LM-15 features a microphone-mute switch; Switch to “mute” when you like to play the aux input source alone or to have private conversation.

Notice :  
The changes or modifications not expressly approved by the party responsible for compliance could void the user’s authority to operate the equipment.

IMPORTANT NOTE:  
To comply with the FCC RF exposure compliance requirements, no change to the antenna or the device is permitted. Any change to the antenna or the device could result in the device exceeding the RF exposure requirements and void user’s authority to operate the device.

This device complies with Part 15 of the FCC Rules. Operation is subject to the following two conditions: (1) this device may not cause harmful interference, and (2) this device must accept any interference received, including interference that may cause undesired operation.

Transmitter: Using microphone other than LM-15

- Connect microphone to the 3.5mm socket on the transmitter
- Transmitter volume is preset at level 4 ◀■■■■
- Press or button to decrease or increase the volume level. There are 4 adjustable levels from ◀■■■■ to ◀■■■■■■■
- Press mute button briefly to mute the transmitter, press the same button once again to recover.

Receiver:

- Receiver volume is preset at level 4 ◀■■■■
- In normal state be displayed, press or button to decrease or increase the volume level. There are 8 adjustable levels from to ◀■■■■■■■
- The LCD display indicates no volume and in mute mode.

Battery Autonomy and Charging

- When battery icon is displayed at fully autonomy , the battery contains sufficient power.
- When the battery icon is displayed as empty and flashing , this indicates low battery and only 10% battery remaining. Recharge the battery immediately via USB certified traveling charger (optional accessories) or appropriated Linkx charger station. It will take approx. 6 hours to reach full charge and provide approx. 18 hours of continuous operation for receiver and 12 hours of continuous operation for transmitter.
- While charging, the battery icon displays on LCD → → back and forth.

Note :

- The transmitter or receiver will shut down automatically when charging is taking place. If you want to use the system while it’s charging, simply press the power button again to turn the system back on.

Q & A

- Q1 ” Sign is displayed on Transmitter
- Ans Check if the transmitter volume is muted or the microphone connections are not properly attached.
- Q2 The content on the LCD display of my receiver is flashing
- Ans This indicates that no transmission signal is being received. Make sure your transmitter is powered on. Both transmitter and receiver are operated on the same channel and same frequency.

Specification

	Overall System	
Frequency preparation	PLL synthesized control OSC	
Modulation	Wideband FM	
Carrier frequency range	UHF 500 - 960 MHz	
Nominal / Peak deviation	±20KHz / ±40KHz	
Frequency response	40Hz ~ 18KHz	
Dynamic range	> 80dB	
THD at 1KHz	< 1%	
Service coverage	150 m (open field)	
Operating temperature	-10°C ~ 50°C	
	TG-300T Transmitter	TG-300R Receiver
RF output power	10mW	
Antenna type	Whip antenna	Depends on the frequency band
3.5 phone jack	Microphone in	Headphone output
Operating time	12 hours	18 hours
Battery type	1300mA 3.7V Li-Polymer Rechargeable	
Charging source	DC 5V Micro USB	
Charge time	< 6 hours	
LCD display	Channel, Battery indicator, Lock, Volume	
Regulatory compliance	CE FCC	
Dimension	82.6(H) × 40(W) × 12(D)mm Antenna length not included	82.6(H) × 40(W) × 12(D)mm
Weight	49g	

Notice :  
The changes or modifications not expressly approved by the party responsible for compliance could void the user’s authority to operate the equipment.

IMPORTANT NOTE:  
To comply with the FCC RF exposure compliance requirements, no change to the antenna or the device is permitted. Any change to the antenna or the device could result in the device exceeding the RF exposure requirements and void user’s authority to operate the device.

This device complies with Part 15 of the FCC Rules. Operation is subject to the following two conditions: (1) this device may not cause harmful interference, and (2) this device must accept any interference received, including interference that may cause undesired operation.