



WisePOS®

Android based
mPOS device



www.bbpos.com

Index

Fig.1- Front View

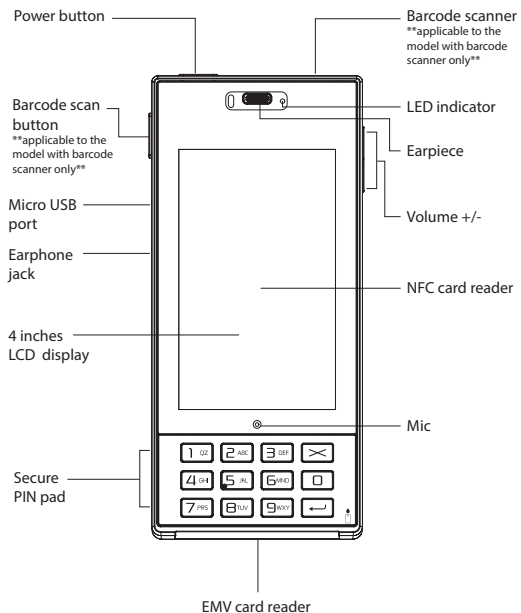


Fig. 2 - Back View

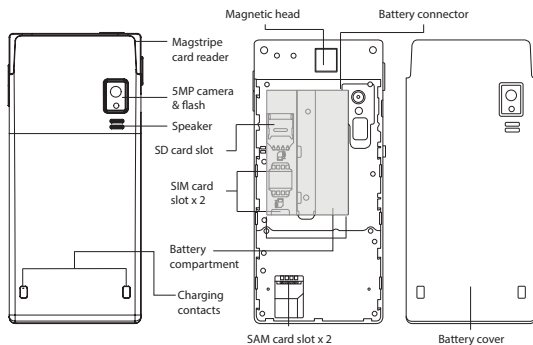


Fig. 3 - Internal View

CAUTION:
Please don't point or damage the internal components when the back housing is opened. Any intentional damages may void the warranty and cause device malfunction.

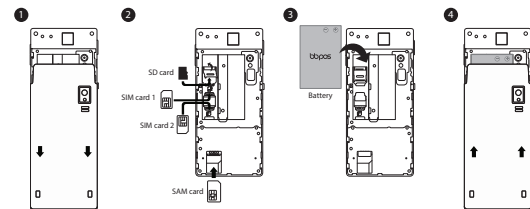
Package Contents

Device	X1
USB cable	X1
Rechargeable battery	X1
Quick start guide	X1

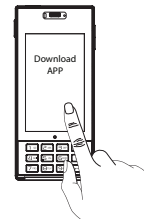
Quick Start Guide

IMPORTANT:

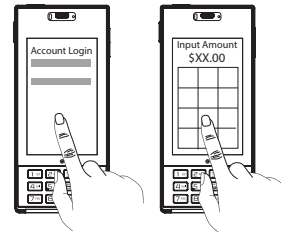
Push & slide to open the back cover of WisePOS™ to insert the rechargeable battery into the battery compartment; SD card, SIM cards and SAM cards to card slots properly, then lock the cover again for battery charging via USB cable before use.



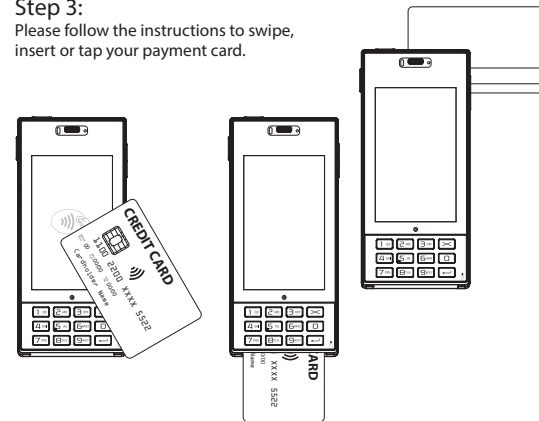
Step 1:
Download the official APP from APP Store.



Step 2:
Please follow the instructions of app to login and input amount to start the transaction process.



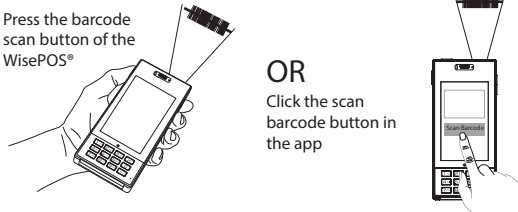
Step 3:
Please follow the instructions to swipe, insert or tap your payment card.



How to use barcode scanner (if applicable)

This section is only applicable to the model with barcode scanner.

Please follow the instructions of app to press the barcode scan button or click the scan barcode button in the app, and then project the red laser light on the barcode on the product.



Cautions & Important Notes

- Ensure to download the official APP from APP Store.
- Please fully charge your WisePOS™ before use.
- Please ensure magstripe /EMV chip of the card is facing the right direction when swiping or inserting card.
- Don't drop, disassemble, tear, open, crush, bend, deform, puncture, shred, microwave, incinerate, paint, or insert foreign object into the device. Doing any of which will void the Warranty.
- Don't immerse the device into water and place near washbasins or any wet locations. Don't spill any food or liquid on the device. Don't attempt to dry the device with external heat sources, such as microwave or hair dryer.
- Don't use any corrosive solvent or water to clean the device. Recommend using dry cloth to clean the surface only.
- Don't use any sharp tools to point the internal components or connectors, doing which may lead to malfunction and void the Warranty.
- Don't try to disassemble the device to repair. Please contact your dealer for repair and maintenance.

Product Specifications

Features & Functions	<ul style="list-style-type: none">• Android 4.4.2• EMV Contactless/NFC card reader• EMV/PBOC Chip card reader• Triple track magnetic stripe card reader• Secure PIN pad• High speed 1D barcode scanner (optional)• 3G/WiFi/BT connectivity• Application download via MoneyStore• Over-the-air firmware upgrade• Over-the-air cryptographic-key loading
User Interface	<ul style="list-style-type: none">• 4" full color TFT display• 4 LEDs for EMV contactless reader, 1 LED for power indicator• Cap Sense Touch Panel• Physical function buttons: "POWER", "VOL +", "VOL -"• Large barcode scanning button (barcode scanning optional)• Audio receiver, microphone and ringer
Card Reader Interface	<ul style="list-style-type: none">• NFC Card Reader: EMV Contactless / ISO14443A/B• Chip Card Reader: EMV / PBOC / ISO7816 (Reads Type A/B/C cards)• Magnetic Stripe Card Reader: 3 Tracks ISO7811
PIN Pad Interface	<ul style="list-style-type: none">• Physical buttons• "0"- "9", "Enter", "Cancel"
Cryptographic Functions	<ul style="list-style-type: none">• PIN & Data encryption• Key management schemes: DUKPT, MK/SK• Encryption Algorithm: TDES• Remote working keys distribution via asymmetric scheme
Connectivity	<ul style="list-style-type: none">• 3G data: WCDMA 850/2100MHz• 2G data: GPRS EDGE Class 12 850/900/1800/1900MHz• 2G voice: GSM 850/900/1800/1900MHz• WiFi: 802.11 b/g/n• Bluetooth®: BT 4.0 (Classic 3.0 HS/2.1 EDR mode and BLE mode)• Micro-USB• 3.5mm hands-free socket
Sensors and Expansion Interfaces	<ul style="list-style-type: none">• 5MP auto focus camera with LED flash• GPS• 1D barcode scanner (optional)• 2 Micro SIM slots• 2 Mini SAM slots• micro SD card slot

Battery	<ul style="list-style-type: none">• Detachable 3000mAh 3.7v Li-ion battery• Charging: 5V 800mA via micro USB or charging cradle contacts• Charging time: < 5 hours
Physical Characteristics	<ul style="list-style-type: none">• Operating Temperature & Humidity: 0°C - 45°C / 32°F - 113°F, RH 95% max.• Storage Temperature & Humidity: -20°C - 55°C / 14°F - 131°F, RH 95% max.• Chip Card Reader Lifetime: 100k cycles• Magnetic Card Reader Lifetime: 100k cycles• Dimensions: 70.5 x 155 x 17.8 mm / 2.78 x 6.1 x 0.7 inch (approx.)• Weight: 240g / 8.1oz (approx.)
Certifications*	<ul style="list-style-type: none">• PCI PTS POI v4.1 with SRED• EMV L1 & L2• PBOC 3.0 L1 & L2• EMV Contactless L1• VISA PayWave• MasterCard PayPass• AMEX Expresspay• Discover Network ZIP, Contactless D-PAS• QPBOC 3.0 L1 & L2• MasterCard TQM• VISA Ready• MasterCard Mobile POS• FCC, CE

Troubleshooting

Problems	Recommendations
Device cannot read your card successfully	<ul style="list-style-type: none">• Please check if the device has power when operating and ensure devices are connected.• Please check if the application instructs to swipe or insert card.• Please ensure there is no obstacle in the card slots.• Please check if the magstripe or chip of the card is facing the right direction when swiping or inserting card.• Please swipe or insert card with a more constant speed.

Problems	Recommendations
Device cannot read your card successfully through NFC	<ul style="list-style-type: none">• Please check if your card supports NFC payment.• Please ensure that if your card is placed within 4 cm range on top of the NFC marking.• Please take out your NFC payment card from wallet or purse for payment to avoid any interference.
Device has no response	<ul style="list-style-type: none">• Please check if the rechargeable battery, SIM cards and SAM cards are properly inserted.• Please check if the device is fully charged.• Please restart the device for retry.

FCC Caution Statements:

This device complies with Part 15 of the FCC Rules. Operation is subject to the following two conditions: (1) This device may not cause harmful interference, and (2) this device must accept any interference received, including interference that may cause undesired operation.

NOTE: This equipment has been tested and found to comply with the limits for a Class B digital device, pursuant to Part 15 of the FCC Rules. These limits are designed to provide reasonable protection against harmful interference in a residential installation. This equipment generates, uses and can radiate radio frequency energy and, if not installed and used in accordance with the instructions, may cause harmful interference to radio communications. However, there is no guarantee that interference will not occur in a particular installation. If this equipment does cause harmful interference to radio or television reception, which can be determined by turning the equipment off and on, the user is encouraged to try to correct the interference by one of the following measures:

- Reorient or relocate the receiving antenna.
- Increase the separation between the equipment and receiver.
- Connect the equipment into an outlet on a circuit different from that to which the receiver is connected.
- Consult the dealer or an experienced radio/TV technician for help.

Caution: Any changes or modifications not expressly approved by the party responsible for compliance could void the user's authority to operate this equipment.

This transmitter must not be co-located or operating in conjunction with any other antenna or transmitter.

Specific Absorption Rate (SAR) information:
This WisePOS™ meets the government's requirements for exposure to radio waves. The guidelines are based on standards that were developed by independent scientific organizations through periodic and thorough evaluation of scientific studies. The standards include a substantial safety margin designed to assure the safety of all persons regardless of age or health.

FCC RF Exposure Information and Statement The SAR limit of USA (FCC) is 1.6 W/kg averaged over one gram of tissue. Device types: WisePOS (FCC ID: 2AB7X-WISEPOS) has also been tested against this SAR limit. This device was tested for typical body-worn operations with the back of the handset kept 10mm for body worn and 10mm for hotspot. To maintain compliance with FCC RF exposure requirements, use accessories that maintain a 10mm for body worn and 10mm for hotspot. The use of belt clips, holsters and similar accessories should not contain metallic components in its assembly. The use of accessories that do not satisfy these requirements may not comply with FCC RF exposure requirements, and should be avoided.

Body-worn Operation

This device was tested for typical body-worn operations. To comply with RF exposure requirements, a minimum separation distance of 10mm for body worn and 10mm for hotspot must be maintained between the user's body and the handset, including the antenna. Third-party belt-clips, holsters, and similar accessories used by this device should not contain any metallic components. Body-worn accessories that do not meet these requirements may not comply with RF exposure requirements and should be avoided. Use only the supplied or an approved antenna.

Need Help?

E: sales@bbpos.com | T: +852 3158 2585



Room 1602, 16/F, Tower 2, Nina Tower, No. 8 Yeung Uk Road, Tsuen Wan, Hong Kong
www.bbpos.com