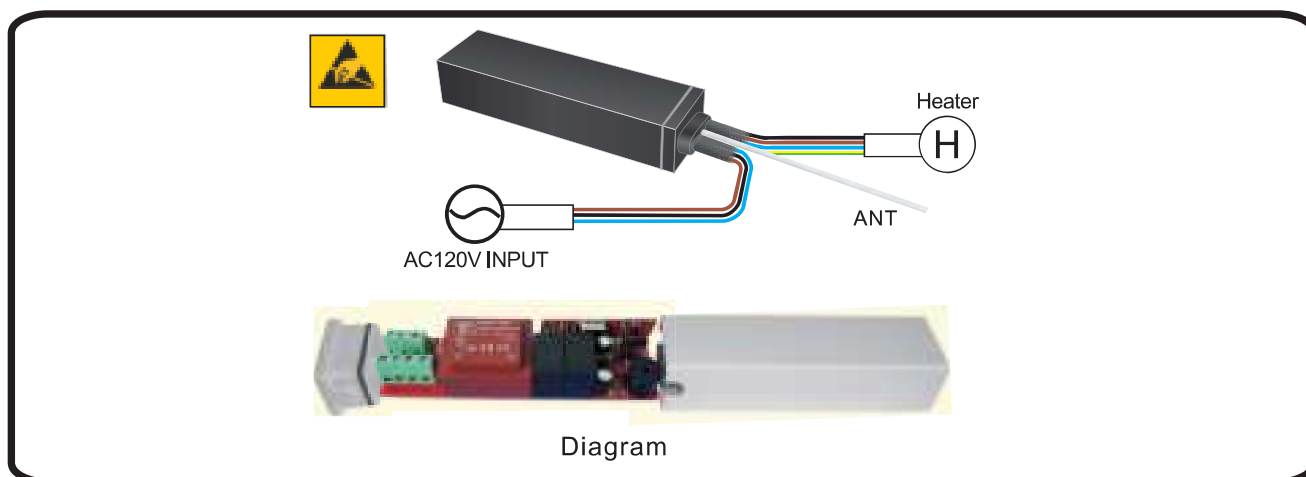


II. Parameters

Model No	Voltage	Temperature	Loading Power	Frequency	Work time	Control Method	RF receiving distance
PX1500	120VAC 60HZ	-20°C ~ +60°C	MAX 1500W	433.92MHZ	UNLIMITED TIME	RF REMOTE CONTROL	OPEN DISTANCE ≤35M

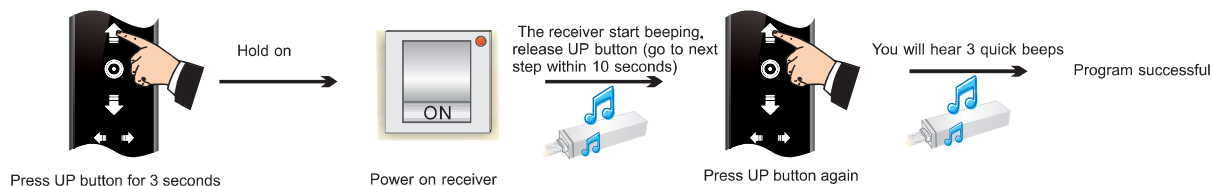
III. Installation and Wiring



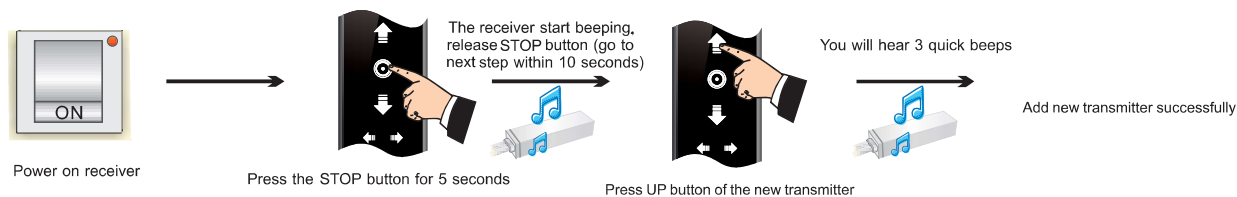
IV. Programming Method

1.Program

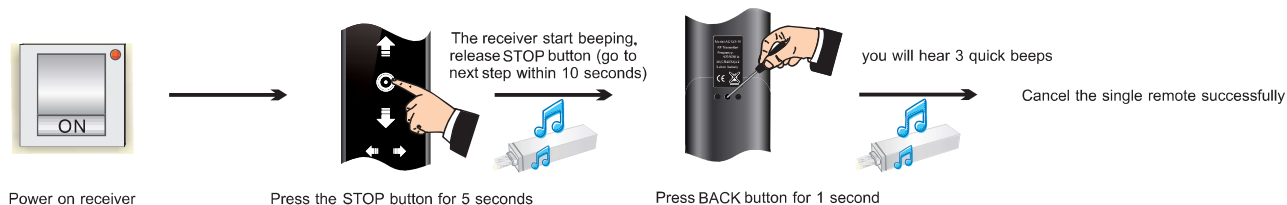
After successfully programmed, press UP button of transmitter to open the heater, press DOWN button of transmitter to close the heater, no action when press the STOP button of transmitter



2.Add new transmitter



3.Cancel single remote programming



4.Cancel all remote programming

