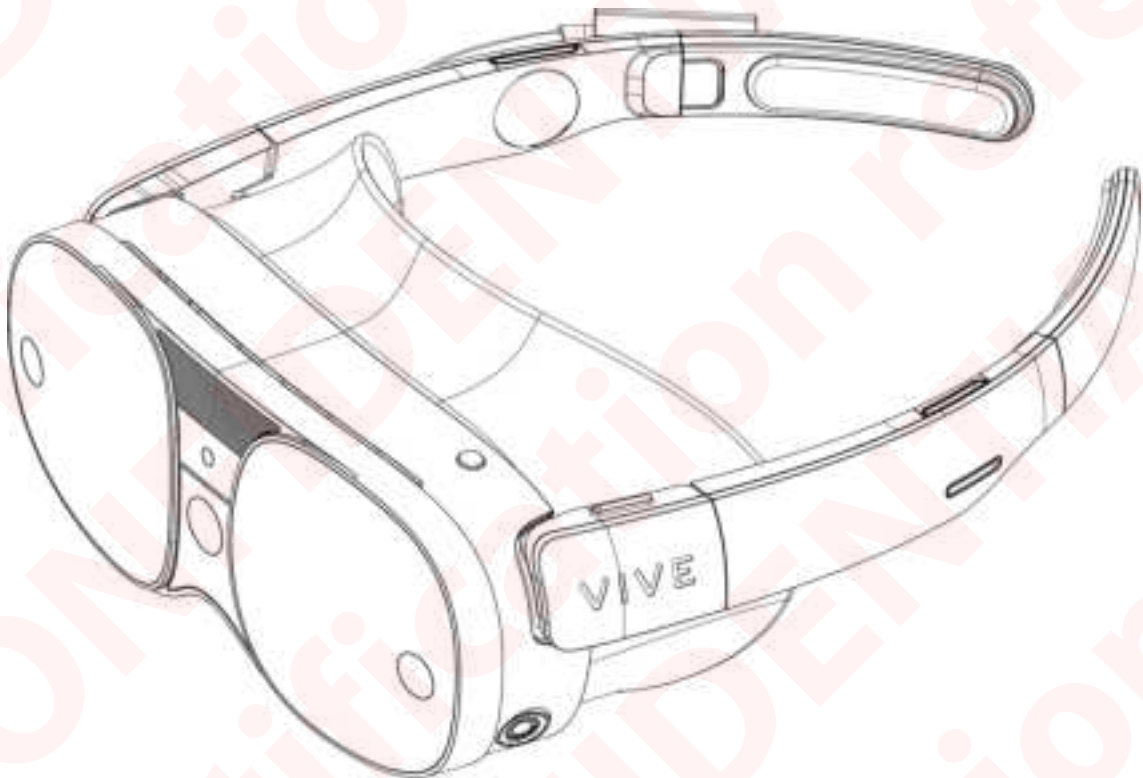


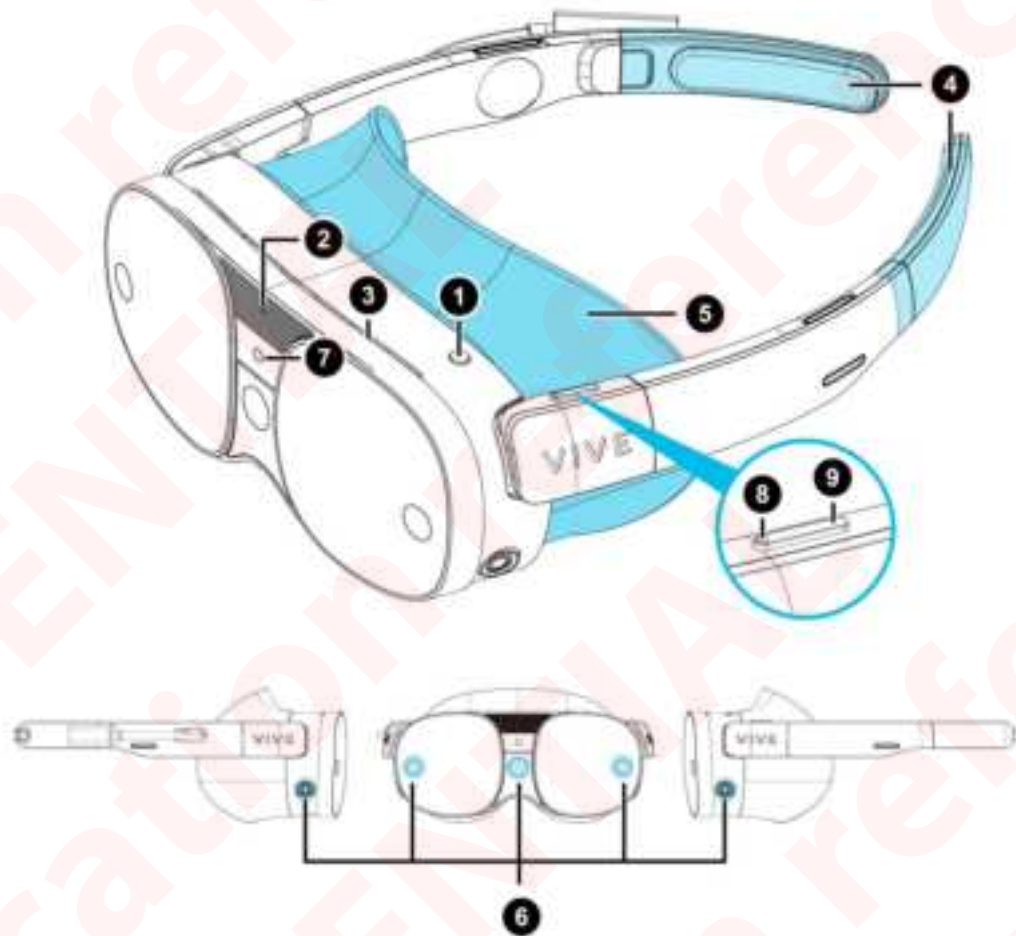


VIVE

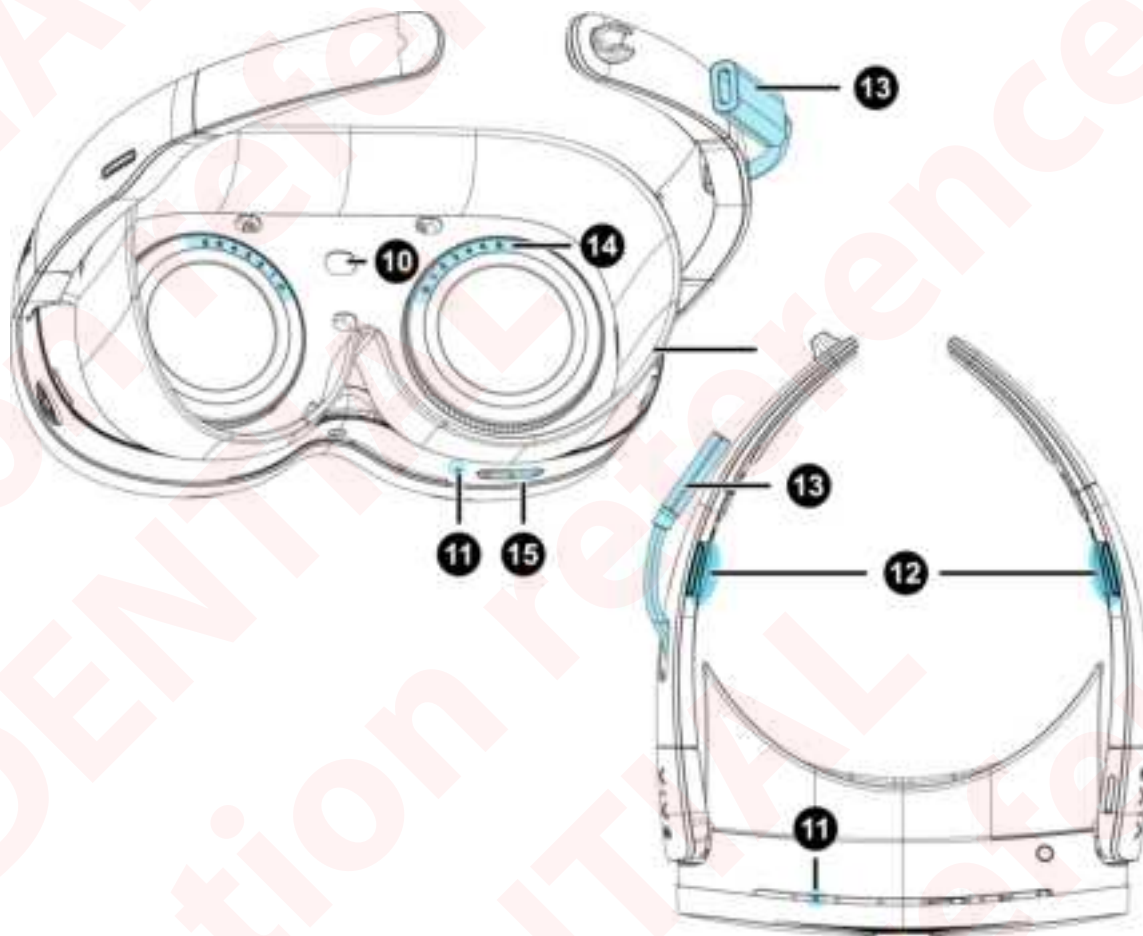
2QBB100



Components



1. Headset button
2. LED (Status light)
3. Vent (Don't block or insert objects into it)
4. Temple pads (Removable)
5. Face cushion
6. Device cameras
7. Structured light
8. Volume up button
9. Volume down button

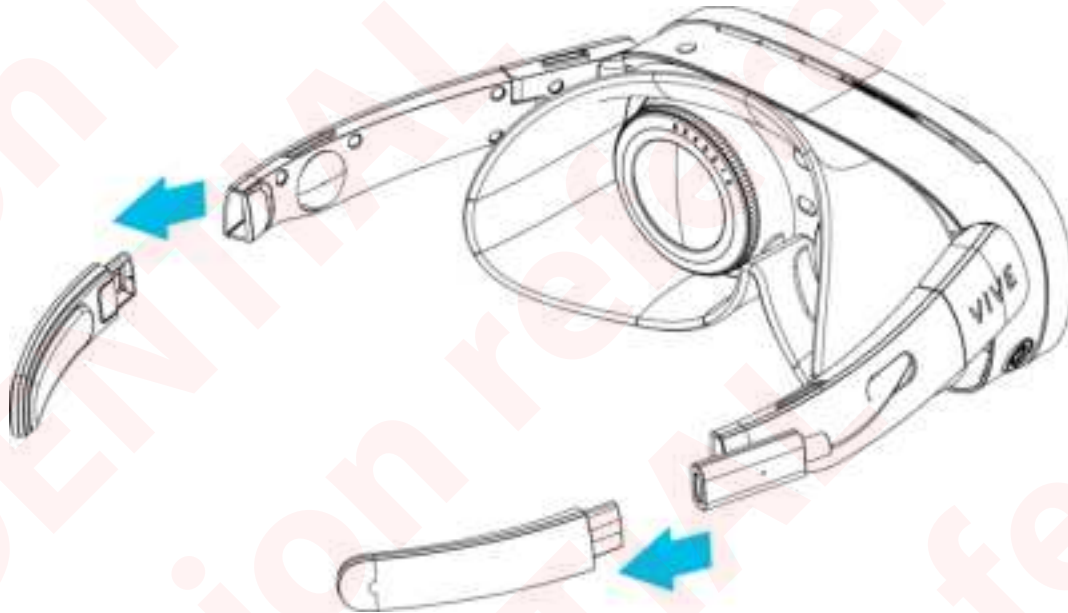


10. Proximity sensor
11. Microphones
12. Speakers
13. USB Type-C receptacle cable
14. Diopter dials
15. IPD wheel

Install 2QBQ100 to the headset

You can install the 2QBQ100 accessory and use its battery pack to supply power to the headset.

1. Detach the temple pads from the temple arms of the headset.



2. Attach 2QBQ100 to the temple arms and plug its USB Type-C cable to the receptacle cable on the headset.

