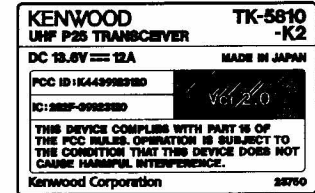
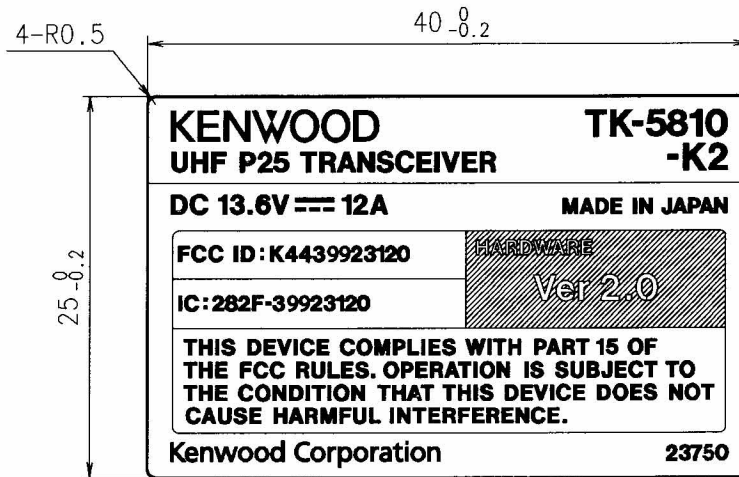


TK-5810-K2 FCC ID: K4439923120 IC ID: 282F-39923120





| 1             | 2   | 3      | 4                             |
|---------------|-----|--------|-------------------------------|
| TOLERANCE (C) | MMV | SYMBOL | REVISION NO. CODE ISSUED DATE |
| ~ 6 ±0.15     | -   | △ x -  | - - 200 - -                   |
| 6 ~ 30 ±0.20  |     |        |                               |
| 30 ~ 80 ±0.30 |     |        |                               |
| 80 ~250 ±0.40 |     |        |                               |
| 250~500 ±0.55 |     |        |                               |



(1:1)

# NOTES:

FOR DETAILS ON PRINTING,REFER TO THE FILM.  
COLORS SHALL BE AS FOLLOWS:  
LETTERS AND LINES:BLACK BACKGROUND:SILVER

PRESURE-SENSITIVE ADHESIVE MUST NOT CAUSE DISCOLORATION.

MUST BE PRINTED WITH FILM.

FILM TO BE SUPPLIED BY KENWOOD.


PER SHEET:10PCS

NUMBER OF APPROVAL SAMPLES:3 PCS

SEE APPROVED SAMPLE FOR OTHER DETAILS.

This parts must obey the green supply guideline in kenwood co. and "ELV", "RoHS" which is the EU instructs.

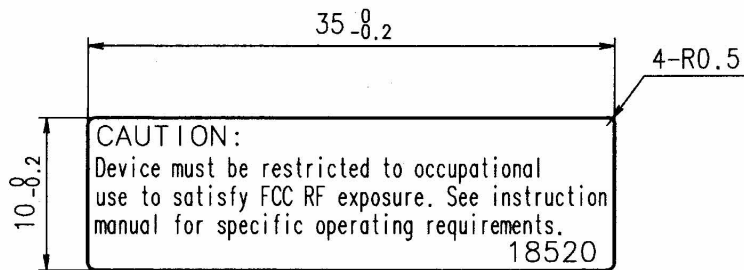
YOKOHAMA

|   |             |          |         |  |  |             |      |
|---|-------------|----------|---------|--|--|-------------|------|
| -   | -           | -        | -       | AL EVAPORATION<br>PLATE t0.1<br>FROSTED SILVER | BACK SURFACE: SUPER<br>STRONG TACKIFIER<br>(LINTEC, FOR HAM) | Y51-5110-11 | -    |
| NO.   | PART NUMBER | NOTE     |         | MATERIAL                                       | FINISH   | MODEL       | QTY. |
| SCALE NT: S   |             | DESIGNED | CHECKED | APPROVED                                       | PART NAME  |             | -    |
| UNIT : mm   |             |          |         |  | MODEL NAME PLATE   |             | -    |
|  |             |          |         |  | DRAWING NUMBER MMV -   |             | -    |
|   |             | DATE     | 2006- - |  | PART NO.   | SHEET NO.   | REL. |
| JIS Z8310-84  |             | KENWOOD  |         | Kenwood Corporation                            | B72-2375-04 1/1 00   |             | Y    |

DRWN. DATE 2006-08-21

#

| 1               | 2   | 3      | 4                             |
|-----------------|-----|--------|-------------------------------|
| TOLERANCE (C)   | MMV | SYMBOL | REVISION NO. CODE ISSUED DATE |
| ~ 6 ±0.15       | -   | △ x -  | - - 200 - -                   |
| 6 ~ 30 ±0.20    |     |        |                               |
| 30 ~ 80 ±0.30   |     |        |                               |
| 80 ~ 250 ±0.40  |     |        |                               |
| 250 ~ 500 ±0.55 |     |        |                               |



**CAUTION:**  
Device must be restricted to occupational use to satisfy FCC RF exposure. See instruction manual for specific operating requirements.  
18520

(1:1)

|              |                |          |                     |  |  |             |      |
|--------------|----------------|----------|---------------------|--|--|-------------|------|
| -            | -              | -        | -                   | AL EVAPORATION SHEET t0.1 FROSTED SILVER | SEAL PRINTING, STRONG TACKFIER, LAMINATE(FROSTING) | Y60-4050-20 | -    |
| NO.          | PART NUMBER    | NOTE     | MATERIAL            | FINISH                                   | MODEL  | QTY.        |      |
| SCALE        | 2:1            | DESIGNED | CHECKED             | APPROVED                                 | PART NAME  | -           |      |
| UNIT         | : mm           |          |                     |  | CAUTION LABEL                                      | -           |      |
|              |                | DATE     | 2004-09-24          | DRAWING NUMBER                           | MMV -  | SHEET NO.   | REL. |
| JIS Z8310-84 | <b>KENWOOD</b> |          | KENWOOD CORPORATION | B41-1852-04                              | 1/1  | 00          | Y    |

DRWN. DATE 2004-07-29

#