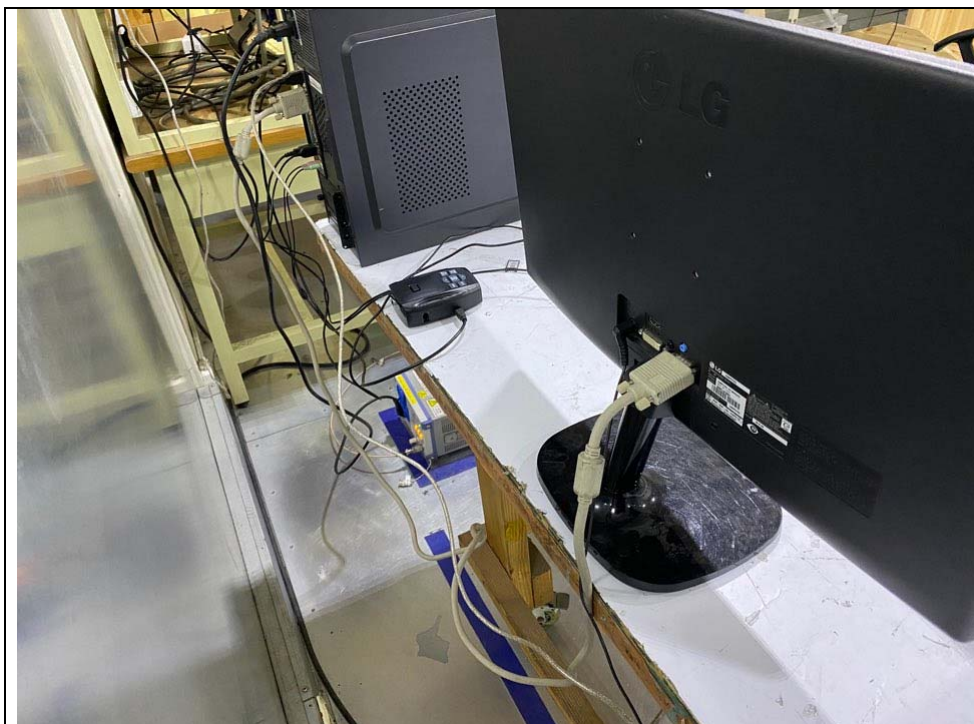


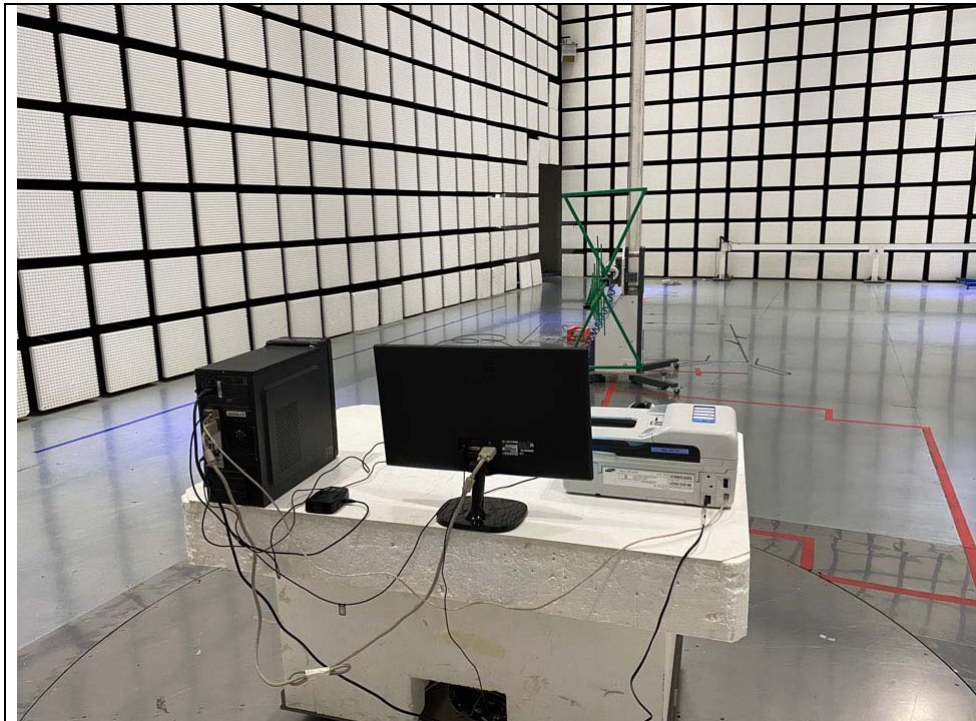
Test setup photos [JAB]

- Conducted Emission

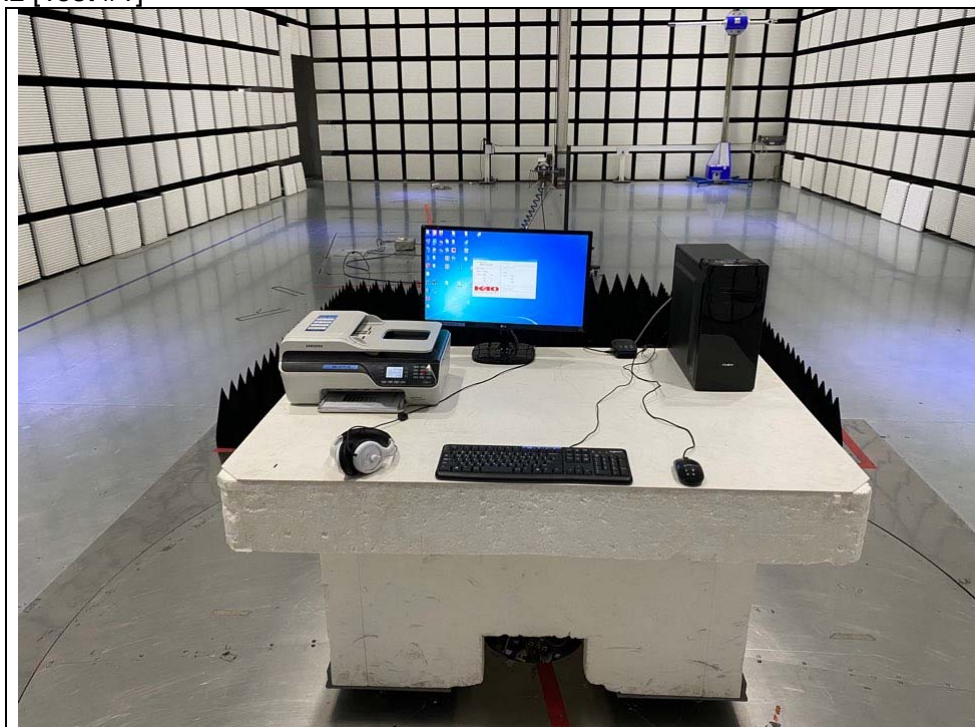
AC Main [Test #1]



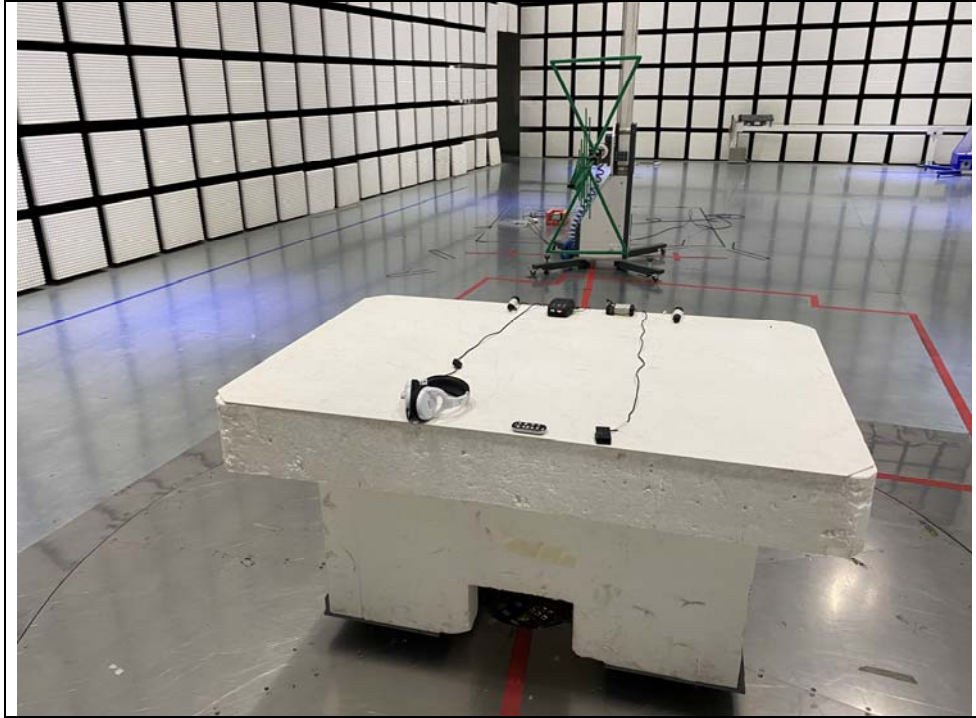
- Radiated Emission
30 MHz ~ 1 GHz [Test #1]



1 GHz ~ 6 GHz [Test #1]



30 MHz ~ 1 GHz [Test #2]



1 GHz ~ 6 GHz [Test #2]



Test setup photos [CRD]

- Radiated Emission

11.7 GHz ~ 12.2 GHz [Test #1]

