



Quick Guide



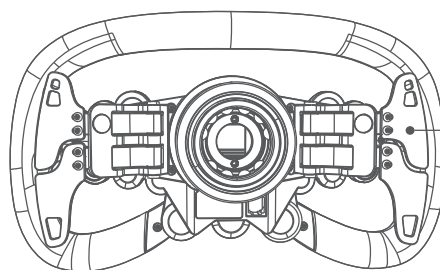
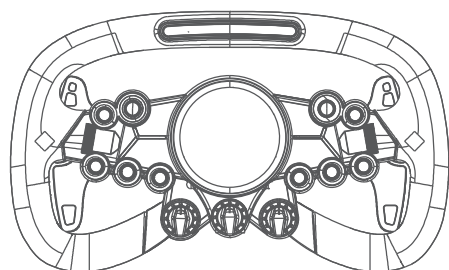
售后客服

Vision GS Steering Wheel



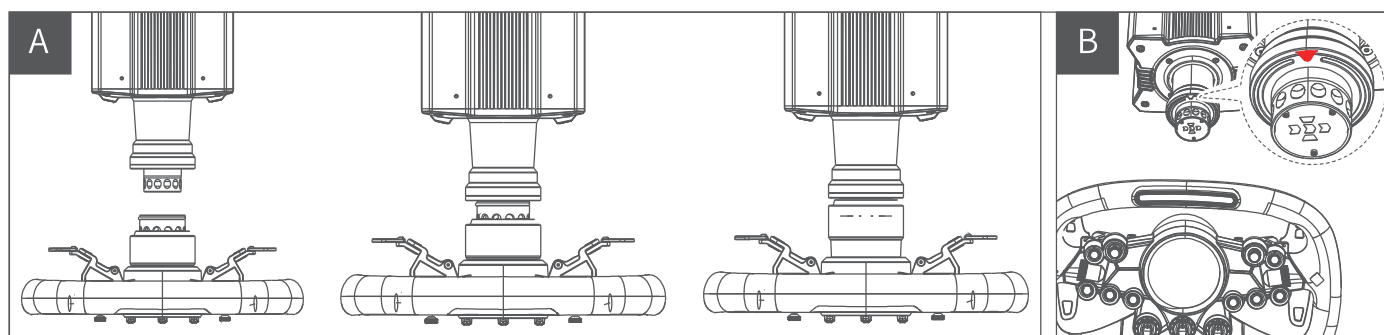
01 Product Features

- Futuristic Design
- 2.85" Customizable HD Display
- Carbon Fiber Reinforced Composite
- 16.7M Color RPM Lights
- Hall Sensor Magnetic Paddle with Dual Clutch
- Programmable Short Travel RGB Buttons
- All-aluminum Quick Release
- Direct Connection to PC



The shifter paddle mounting hole is elongated to allow the paddle distance to be adjusted.

02 QR Use Guide



Method A:

- Align the 6 ball bearings on the wheel QR with the 6 notches on the base QR mount.
- Press the quick release onto the base mount, keeping the bearings and notches aligned.
- The quick release will automatically lock into place; if it doesn't, then remove it, recheck the alignment and try again.
- To remove the wheel, squeeze the black quick release part with the MOZA logo towards the wheel with both hands and pull out the wheel at the same time.

Method B:

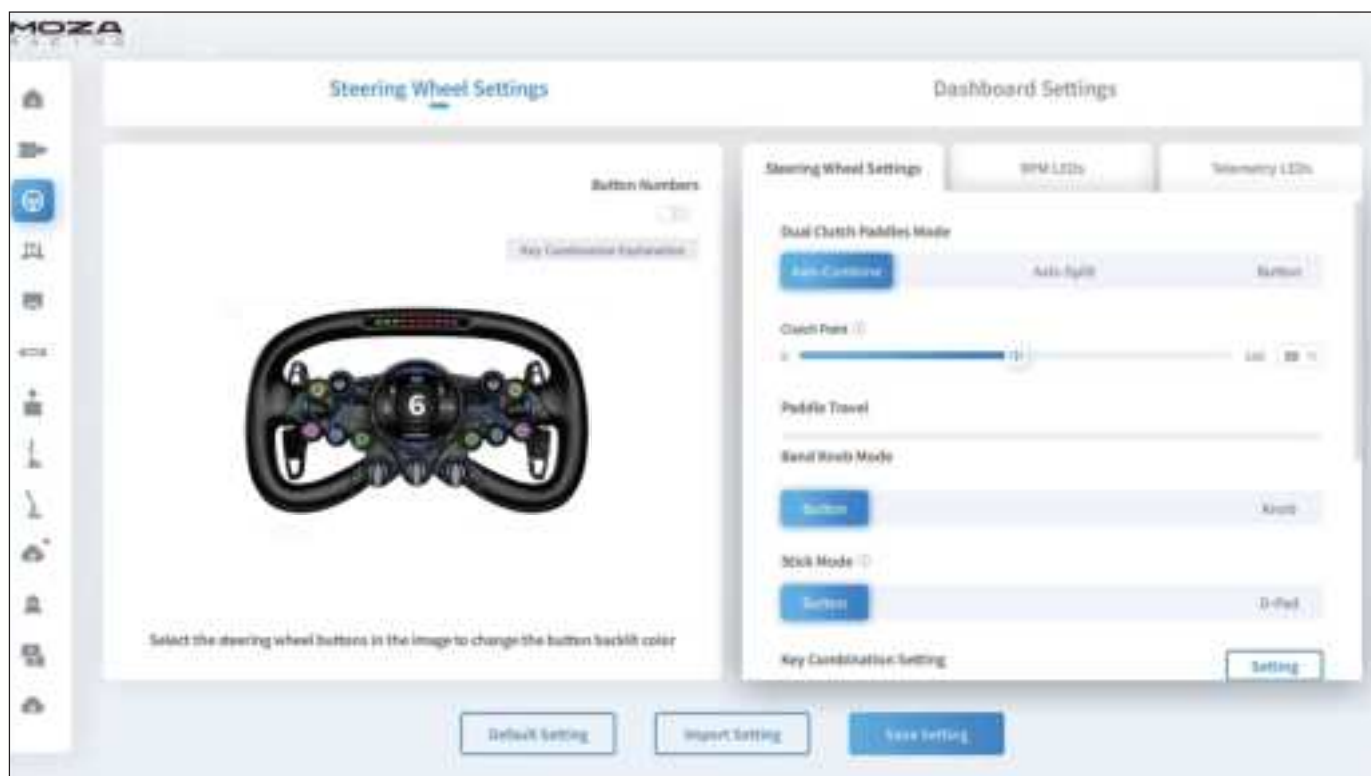
- Rotate the wheelbase until you locate the arrow directly above the base.
- Center the wheel and attach it to the wheelbase.
- To remove the wheel, use both hands to squeeze the black quick release part with the MOZA logo towards the wheel with both hands and pull out the wheel at the same time.

03 Steering Wheel Configuration

The wheel can be set up quickly and easily using MOZA Pit House software.

- Clutch paddle modes: Can be set to composite axis, independent axis, or button.
- Joystick modes: Can be set to button or D-pad.
- RPM indicator switch modes: Choice of rpm, off and constant.

- Indicator modes: There are two modes, mode 1 and mode 2; both are explained in detail when the mouse is hovered over the corresponding option.
- RPM indicator timing: Choose between early, normal, late or custom to match in-game RPM timing.
- Brightness: The brightness of the buttons and RPM LEDs are adjustable.
- Button combinations: Click on the button combination description tab on the upper right corner of the steering wheel page to show a list of button input numbers and programming input combinations.
- Change RPM light colors: When hovering the mouse over the RPM light, a color palette will appear for changing the colors. Simply click on a preferred color to set the indicator light color. Alternatively, clicking the colored icons on the palette opens the RGB color editor for additional color options.
- Change button colors: When hovering the mouse over the buttons on the steering wheel image, a color palette will appear for changing the colors. Simply click on a preferred color to set the button light. Alternatively, clicking the colored icons on the palette opens the RGB color editor for additional color options.
- Select Dash Display Screen UI: Hover over the screen UI to reveal a play button. Click it to choose that UI design.
- Edit Digital Dash Display UI: Hover over the screen UI to reveal an edit button. Click it to edit the display UI. For advanced customizations, access the Dash Display Screen UI Editor in the MOZA Pit house.
- Screen Brightness: Adjust screen brightness by dragging the slider.



(for detailed steering wheel settings and functions, please visit the official website of MOZA Racing)

04 Precautions

- Do not expose the device to liquids or humidity as it may cause fire or electric shock.
- Avoid using the device in direct sunlight.
- Recommended indoor temperature: 15°C ~ 35°C.
- For your safety and well-being, please monitor your gaming time and take breaks as needed.
- The device is not suitable for children under the age of 6, small accessories may pose a choking hazard!
- Children under 13 should have adult supervision.
- It is strictly forbidden to disassemble the equipment by yourself, failure to adhere to this will result in loss of warranty.
- In order to ensure user safety, parts repair or replacement can only be carried out by officially authorized repair centers.
- Do not expose the device to heat sources.
- If you find any abnormality, please stop using it immediately and seek help from MOZA representatives or authorized repair centers.
- Stay tuned to our official website and social media platforms for the latest product updates.

⚠ This product use is limited to activities related to simulated driving, please distinguish between simulated games and reality to ensure safe driving

04 Packing details

1. Vision GS Steering Wheel 2. MOZA stickers 3. Tool Kit: L-shaped Wrench, Plastic Tweezer

05 Spec

Size: 310mm

Face plate material: Carbon fiber reinforced composite

Back plate material: Aviation-grade aluminum alloy

Grip material: Microfiber leather with hand stitching

Dash display: 2.85-inch HD circular screen

Dash display UI: Customizable

Short-travel backlit buttons: 8 pcs

Rear Keys: 2 pcs

Aluminum alloy rotary encoders: 3 pcs

Aluminum alloy thumbwheels: 2 pcs

7-way Funky Switch: 1 pc

Joystick: 1 pc

High Brightness RGB LEDs: 10 pcs

RPM and button colors: 16.7 million colors

Shifter paddles: hall sensor magnetic paddles

Dual-clutch paddles: hall sensor dual-clutch paddles

Intelligent telemetry: Supported

RPM LEDs fully adjustable through MOZA Pit House: Supported

Release method: All-aluminum quick release

Communication method: Wireless and wired

Compatibility: Compatible with all MOZA bases; works with 3rd party bases via the MOZA hub.

This device complies with part 15 of the FCC Rules. Operation is subject to the following two conditions:(1) This device may not cause harmful interference, and (2) this device must accept any interference received, including interference that may cause undesired operation.

Any Changes or modifications not expressly approved by the party responsible for compliance could void the user's authority to operate the equipment.

This equipment has been tested and found to comply with the limits for a Class B digital device, pursuant to part 15 of the FCC Rules. These limits are designed to provide reasonable protection against harmful interference in a residential installation. This equipment generates uses and can radiate radio frequency energy and, if not installed and used in accordance with the instructions, may cause harmful interference to radio communications. However, there is no guarantee that interference will not occur in a particular installation. If this equipment does cause harmful interference to radio or television reception, which can be determined by turning the equipment off and on, the user is encouraged to try to correct the interference by one or more of the following measures:

- Reorient or relocate the receiving antenna.
- Increase the separation between the equipment and receiver.
- Connect the equipment into an outlet on a circuit different from that to which the receiver is connected.
- Consult the dealer or an experienced radio/TV technician for help.

FCC RF exposure statement:

The device has been evaluated to meet general RF exposure requirement. The device can be used in portable exposure condition without restriction.