


**Note :** Pair and **set only one transmitter at a time** to avoid interference and ensure successful operation. Different or the same music/chime can be set for multiple transmitters.

**5.Reset (Clearing out Settings)**

To clear out all settings, press the Music Control Forward button  for 5 seconds, you will hear a "pairing alert chirp" and see a **SINGLE** quick flash, then the music/chime of receiver will turn into the default one (Ding Dong) and pairing will be unset and cleared. You can trigger a transmitter to verify.

**Installation Method**

Before installation, please test if the operating range you choose is working and set music/chime if needed.

**1. Receivers Installation**

Plug-in receiver: Just plug receiver into standard outlet in room, then it will work.

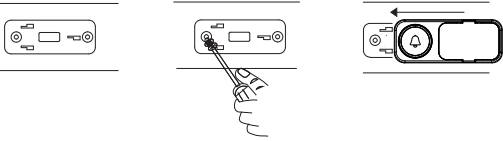
**For Transmitter:** there are 2 methods to install the transmitter.

**Transmitter Installation Method 1:** Double-sided adhesive tap (Preferred install method)

- 1.After ensuring the right mounting position, please clean the flat area where you intend to install transmitter.
- 2.Tear off one side of the double-sided adhesive tap and stick it to the underside of transmitter; tear off the other side and put transmitter onto wall, then press for 10 seconds.

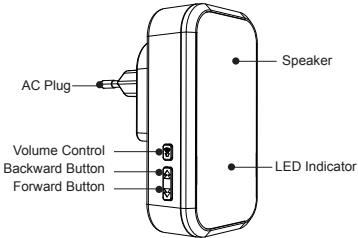
**Transmitter Installation Method 2:** Screw/Anchors (Optional install method)  
Please prepare an electric drill, Phillips screwdriver and slotted screwdriver before installation.

- 1.Make two marks on the place of two mounting holes.
- 2.Drill two holes on the marked places, then insert 2 expansion bolts provided in the package.
- 3.Screw up the bracket or the base of the transmitter.

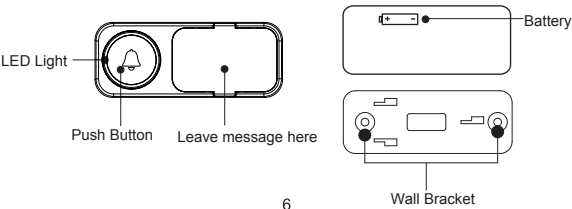


**Structure Diagram**

**Structure Diagram of Receiver**



**Structure Diagram of Transmitter**



**Common Problems and Troubleshootings**

**Receiver suddenly can't get signal from transmitter and doesn't ring.**

**Reason 1:** Low-power battery in transmitter. The less power in transmitter, the shorter range is.

**Solution 1:** Replace with a new battery.

**Reason 2:** Reset the receiver by accident so that transmitter is not paired with receiver any more.

**Solution 2:** Re-pair receiver with transmitter following the Operation Instructions.

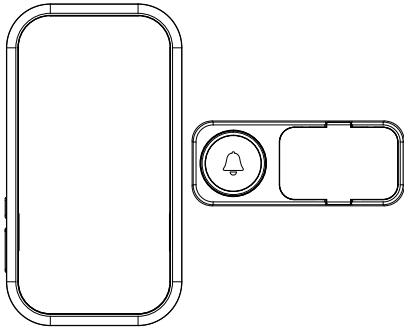
**Reason3:** Plug of receiver is loose

**Solution 3:** Re-plug your receiver.

**Contents**

1 push button, 1 door chime, 1 mounting bracket, 1 12V 23A alkaline battery, 2 screws, 2 anchors and 1 screw driver

**WIRELESS DOORBELL**  
**User Manual**



Please carefully read this user manual before using and installation

**Product Introduction**

- IP55 waterproof transmitter
- 58 selectable ringtones
- 5-level adjustable volume includes mute
- Over 500 feet operation range (open air)
- Easy to install and use
- Expandable, easy to add additional transmitter or receivers (up to 58)
- Low power consumption

**Parameters**


Voltage of plug-in receiver	AC 230V ~, 50Hz
Power consumption of receiver	<0.5W
Power consumption of transmitter	<10mW
Waterproof rating	IP55
Battery in button	1* 12V 23A alkaline battery (included)
Working range	150m in open air
Selectable ringtone	58
Volume range	0-110dB, 5 levels
Expandable (Yes or No)	Yes
Working frequency	433.92MHz±280KHz
Working temperature	-20°C ~ +50°C

**What You Should Know Before Installation**


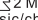
- 1.The transmitter(s) supplied with this kit is(are) paired with receiver(s) and set to default ringtone "Dingdong".IF NOT, please refer to the "Quick Start" to pair the transmitter(s) with receiver(s) and set your favorite ringtone(s).
- 2.It is not advisable to mount the transmitter onto metal surfaces as the material can block RF signals between the transmitter and the receiver. However, if this is the only option then we recommend that you use the sticky pad provided as opposed to using the provided screws.
- 3.Operating range will decrease if battery in transmitter is in low power status.
- 4.It is not advisable to mount the transmitter in the outdoor directly without any shelter which could accelerate aging of plastic materials.

**Operating Instructions**


**1.Volume Adjustment of Receiver**

There are 5 levels of volume for choosing. Find the Volume Control Button  on left side of receiver. Press this button repeatedly to get desired volume level.

**2.Music/Chime Selection of Receiver**

There are 58 music/chimes. Use Forward  and Backward  2 Music Control Buttons on receiver to cycle through the different music/chimes. To set and activate the chosen or desired music/chimes, follow step 3.

**3. Pairing a transmitter to receiver and Setting Musc/Chime:**

- a) Select a desired music/chime for one sensor by pressing the Music Control Buttons on receiver. (Refer to step 2)
- b) Set Receiver into learning mode (pairing mode) by pressing the Volume Control Button  on receiver for 5 seconds. Then you will hear a "pairing alert chirp" and see fast **CONTINUOUS** LED flashing on the receiver--this will indicate the pairing ready status.
- c) Quickly press the transmitter button within 5 seconds to send a signal to receiver, when the pairing (ringtone sync) is successful, the receiver will play the selected ringtone automatically.

Remarks:

- (1)Pairing mode will quit automatically after pairing is completed.
- (2)Pairing mode will last for 5 seconds only.

**4.Two or more transmitters pairing:**

The pairing mode is available for a transmitter only each time. For two or more transmitters, please follow the pairing steps (1)-(3) once again to get transmitters paired one by one.

**FCC Caution:**

This device complies with part 15 of the FCC Rules. Operation is subject to the following two conditions: (1) This device may not cause harmful interference, and (2) this device must accept any interference received, including interference that may cause undesired operation.

Any Changes or modifications not expressly approved by the party responsible for compliance could void the user's authority to operate the equipment.

**Note:** This equipment has been tested and found to comply with the limits for a Class B digital device, pursuant to part 15 of the FCC Rules. These limits are designed to provide reasonable protection against harmful interference in a residential installation. This equipment generates uses and can radiate radio frequency energy and, if not installed and used in accordance with the instructions, may cause harmful interference to radio communications. However, there is no guarantee that interference will not occur in a particular installation. If this equipment does cause harmful interference to radio or television reception, which can be determined by turning the equipment off and on, the user is encouraged to try to correct the interference by one or more of the following measures:

- Reorient or relocate the receiving antenna.
- Increase the separation between the equipment and receiver.
- Connect the equipment into an outlet on a circuit different from that to which the receiver is connected.
- Consult the dealer or an experienced radio/TV technician for help.

The device has been evaluated to meet general RF exposure requirement. The device can be used in portable exposure condition without restriction.