

IMPORTANT

If You're Having Trouble, We're Here to Help!

Call us 24/7 at 1-855-292-4087
E-mail us at support@alteclansing.com or visit us at alteclansing.com

REGISTER YOUR PRODUCT

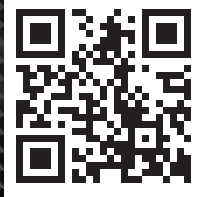
To receive news, exclusive deals, OTA or firmware updates, warranty information and more please register your product at

alteclansingsupport.com



WELCOME

Thank you for purchasing an Altec Lansing product. Download our App to unlock all the features our products have to offer!



follow us
@alteclansingofficial



follow us
@alteclansing



follow us
@alteclansingofficial

12 Month Limited Warranty

All Altec Lansing products come with 12 month limited warranty from the date of its original purchase

24 Hour Customer Support

We love our customers, and we care about your experience with Altec Lansing. If you need assistance, please call us at 1.855.292.4087 or e-mail support@alteclansing.com

www.alteclansing.com

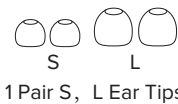
JUST LISTEN.

**True Evo Air
Wireless Earphones**
MZX634N
QUICK START GUIDE

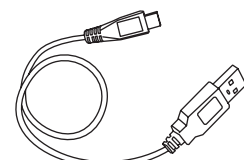
In the Box



MZX634N True Evo Air Wireless Earphones

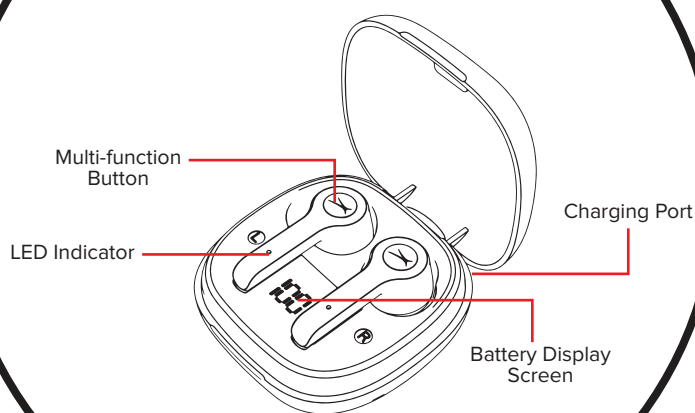


1 Pair S, L Ear Tips

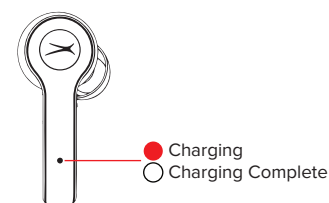
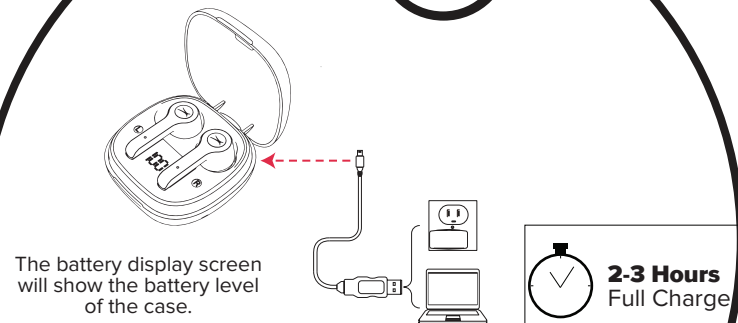
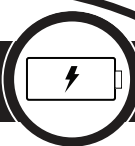


USB-C Charging Cable

A Closer Look



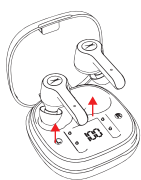
Charging



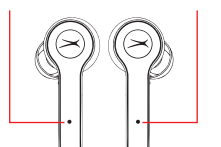
Powering On/ Bluetooth Pairing



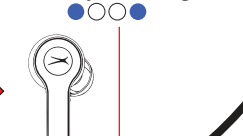
Take the earphones out of the charging case to turn On



Pairing Mode
Blue Flashing LED
Red & Blue Flashing LED



Paired
Blue Slowly Flashing LED



Earbud Controls



Press:

▶ Play and Pause
◀ Answer and End Call

Press and Hold (2 Seconds):

⌂ Decline Call
🗣 Voice Assistant (Siri or Google Assistant)

Press Twice:

▶▶ Next Track (Left Earbud)
◀◀ Previous Track (Right Earbud)

Press Three Times:

+ Increase Volume (Right Earbud)
- Decrease Volume (Left Earbud)

Power on manually:
Press and hold 1-2 seconds
Power off manually:
Press and hold about 5 seconds



*To use Siri or Google Assistant, you must have a phone that is compatible with either voice assistants (iOS or Android, respectively).

*Your wireless earbuds will not work with Siri or Google Assistant if the assistant is not first enabled within the settings on the phone. For more information, see your phone's user manual.

*You must be within Bluetooth® range to use Siri or Google Assistant via your wireless earbuds

est.
FIRST

Changes or modifications not expressly approved by the party responsible for compliance could void the user's authority to operate the equipment.

This device complies with Part 15 of the FCC Rules. Operation is subject to the following two conditions: (1) this device may not cause harmful interference, and (2) this device must accept any interference received, including interference that may cause undesired operation.

This equipment has been tested and found to comply with the limits for a Class B digital device, pursuant to Part 15 of the FCC Rules. These limits are designed to provide reasonable protection against harmful interference in a residential installation. This equipment generates, uses and can radiate radio frequency energy and, if not installed and used in accordance with the instructions, may cause harmful interference to radio communications. However, there is no guarantee that interference will not occur in a particular installation.

If this equipment does cause harmful interference to radio or television reception, which can be determined by turning the equipment off and on, the user is encouraged to try to correct the interference by one or more of the following measures:

- Reorient or relocate the receiving antenna.
- Increase the separation between the equipment and receiver.
- Connect the equipment into an outlet on a circuit different

FOLLOW US ON #myalteclansing

Manual Reset



Only do this function experiencing issues that are not solved by simply turning the earphones On/ Off, or by placing them back into the case.



1. Turn off bluetooth device and turn off bluetooth earbuds.
2. Put the earbuds into the charging case, the indicators are red. And then press the buttons of the earbuds and hold about 5 seconds, the indicators will flash red and blue lights alternately and then change to solid red. The reset is complete.

For additional user materials and warranty information, please visit alteclansing.com

FCC Warning Statement

Changes or modifications not expressly approved by the party responsible for compliance could void the user's authority to operate the equipment. This equipment has been tested and found to comply with the limits for a Class B digital device, pursuant to Part 15 of the FCC Rules. These limits are designed to provide reasonable protection against harmful interference in a residential installation. This equipment generates uses and can radiate radio frequency energy and, if not installed and used in accordance with the instructions, may cause harmful interference to radio communications. However, there is no guarantee that interference will not occur in a particular installation. If this equipment does cause harmful interference to radio or television reception, which can be determined by turning the equipment off and on, the user is encouraged to try to correct the interference by one or more of the following measures:

- Reorient or relocate the receiving antenna.
- Increase the separation between the equipment and receiver.
- Connect the equipment into an outlet on a circuit different from that to which the receiver is connected.
- Consult the dealer or an experienced radio/TV technician for help.

This device complies with Part 15 of the FCC Rules. Operation is subject to the following two conditions:

- (1) This device may not cause harmful interference, and
- (2) This device must accept any interference received, including interference that may cause undesired operation.