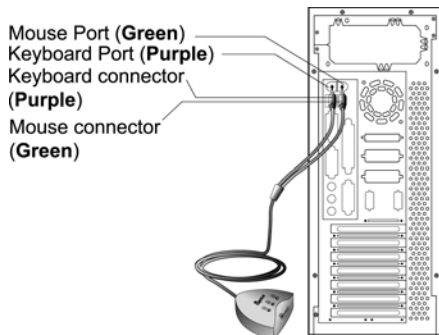

Hardware Installation

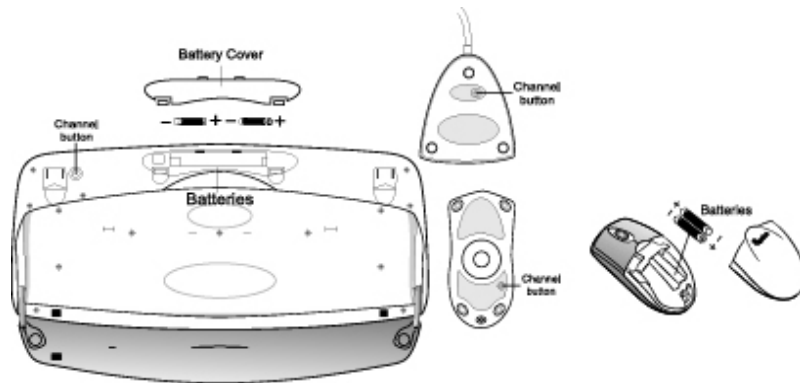
Hardware Installation

Note: Always turn off your computer before you connect or disconnect your mouse and keyboard unless you're using a USB device in Win98 or above. If you have a PC with the PC 99 spec, then the mouse port and keyboard port are green and purple respectively.

1. Connect the receiver's green mouse connector to the computer's 6-pin mouse port.
Connect the receiver's purple keyboard connector to the computer's 6-pin keyboard port.



2. Install two AAA batteries in the mouse and two AA batteries in the keyboard.



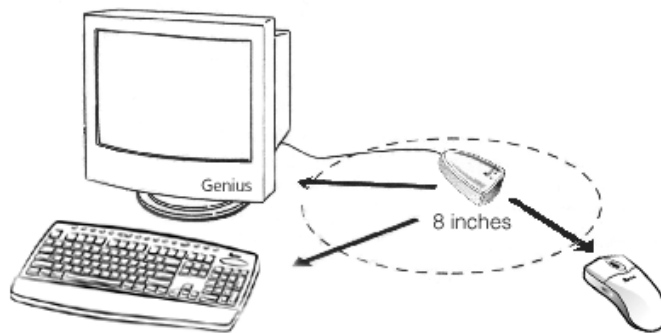
3. Turn on your computer.
4. After you open Windows, please press the button under the receiver first and then press the button under the mouse and keyboard for channel setting. **Make sure each button press is for at least three seconds.**

Warning:

1. When you use Wireless TwinTouch+ on a desk that is made of metal, try using a pad and reduce the receiving distance.
2. Before the first installation is completed (channel setting ready), the keyboard and mouse will not work in DOS.
3. The Wireless TwinTouch+ channel provides 256 ID-codes, and it automatically selects the ID # for your keyboard and mouse. You can only set up one TwinTouch+ at a time. But if you have additional TwinTouch+ sets in an area of 10 square meters, more interference will occur between the receiver and your keyboard and mouse.
4. If you feel the mouse does not move smooth as usual or the keyboard does not work when typing, that the batteries have lost their charge, so please replace them. Also, the wireless icon will be blinking "red" when there is a battery-low situation.



5. The TwinTouch+ with radio frequency gives you free movement and an enjoyable experience. For optimal performance, place the receiver at least 8 inches (about 20 cm) away from the mouse and other electrical devices, such as the computer, monitor, and etc.

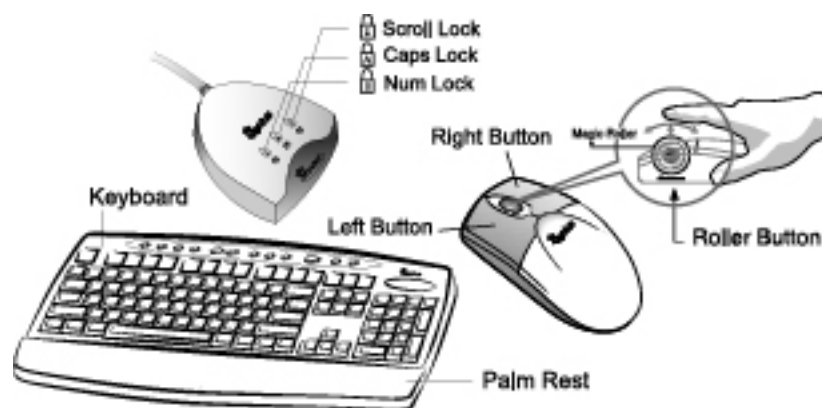


Software Installation

1. Make sure the mouse and keyboard is connected to the computer.
2. Put the Setup disk (or CD) into the disk drive.
3. Follow the instructions on the screen to finish the software installation.

Factory Setting

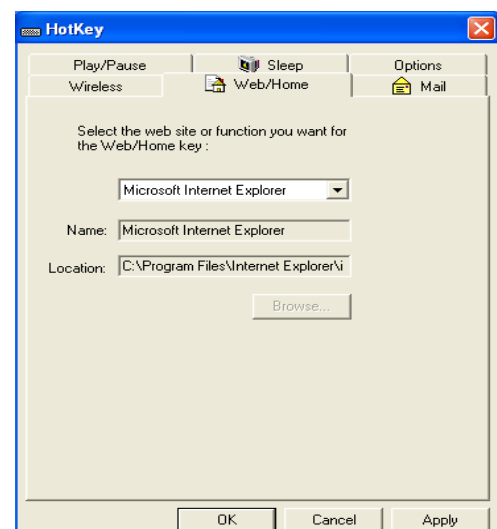
1. Mouse:



2. Keyboard:



1. Rewind: Previous track of audio or video CD's
2. Play & Pause: Play and pause of audio or video CD's
3. Stop: Stop play of audio or video CD's
4. Forward: Next track of audio or video CD's
5. Vol.-& +: decrease or increase volume
6. My favorite: Open my favorite folder
7. E-mail: Open mail folder
8. Back: See last page when viewing the Internet
9. www: Open browser in Netscape or IE
10. Forward: Go to next page when viewing the Internet
11. Sleep: Turn system into sleep mode



Federal Communication Commission Interference Statement

This equipment has been tested and found to comply with the limits for a Class B digital device, pursuant to Part 15 of the FCC Rules. These limits are designed to provide reasonable protection against harmful interference in a residential installation. This equipment generates, uses and can radiate radio frequency energy and, if not installed and used in accordance with the instructions, may cause harmful interference to radio communications. However, there is no guarantee that interference will not occur in a particular installation. If this equipment does cause harmful interference to radio or television reception, which can be determined by turning the equipment off and on, the user is encouraged to try to correct the interference by one of the following measures:

- Reorient or relocate the receiving antenna.
- Increase the separation between the equipment and receiver.
- Connect the equipment into an outlet on a circuit different from that to which the receiver is connected.
- Consult the dealer or an experienced radio/TV technician for help.

FCC Caution: Any changes or modifications not expressly approved by the party responsible for compliance could void the user's authority to operate this equipment.

This device complies with Part 15 of the FCC Rules. Operation is subject to the following two conditions: (1) This device may not cause harmful interference, and (2) this device must accept any interference received, including interference that may cause undesired operation.

This transmitter must not be co-located or operating in conjunction with any other antenna or transmitter.