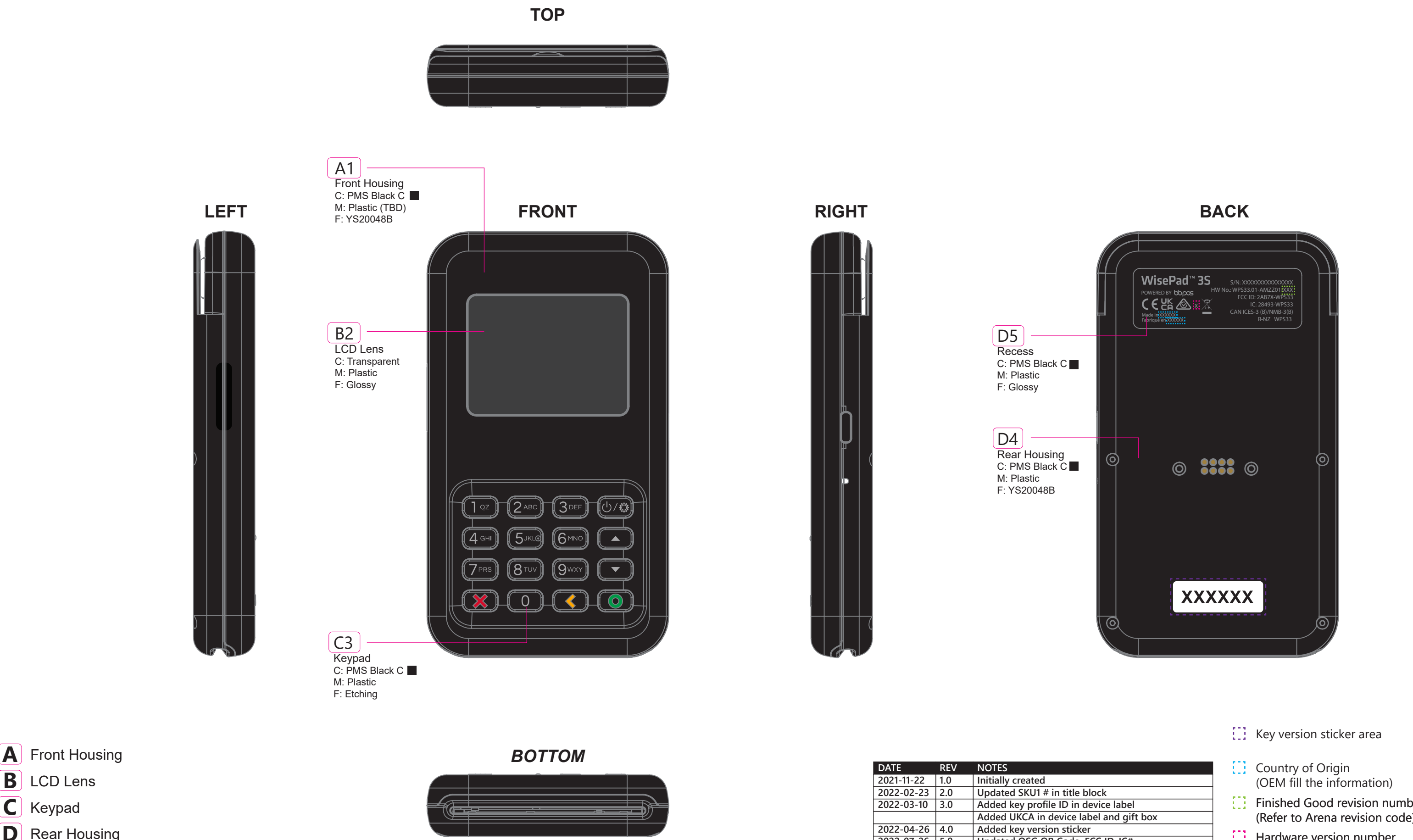


WisePad 3S (WPS33) - CMF

Accessories	Specification
Pogo pin cable(Provided by customer)	-



- A** Front Housing
- B** LCD Lens
- C** Keypad
- D** Rear Housing

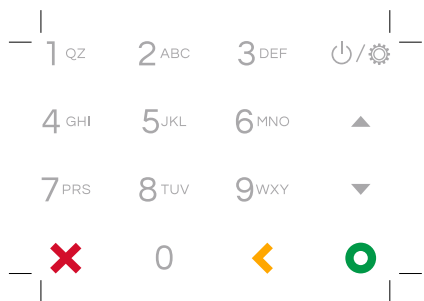
DATE	REV	NOTES
2021-11-22	1.0	Initially created
2022-02-23	2.0	Updated SKU1 # in title block
2022-03-10	3.0	Added key profile ID in device label
		Added UKCA in device label and gift box
2022-04-26	4.0	Added key version sticker
2022-07-26	5.0	Updated QSG QR Code, FCC ID, IC#
2022-08-09	6.0	Removed USB-A to C cable and development label
		Updated PCI HW No.

- Key version sticker area
- Country of Origin (OEM fill the information)
- Finished Good revision number (Refer to Arena revision code)
- Hardware version number (Refer to SKU1 rev. version)

WisePad 3S (WPS33) - Label & Printing



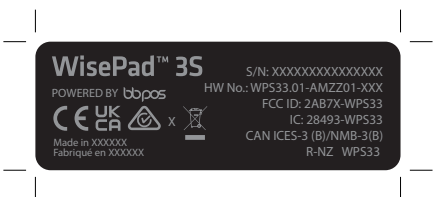
FRONT



46.2 mm x 30.2 mm
Silkscreen Printing
■ Pantone Cool Gray 6 C
■ Pantone 186 C
■ Pantone 347 C
■ Pantone 116 C



BACK

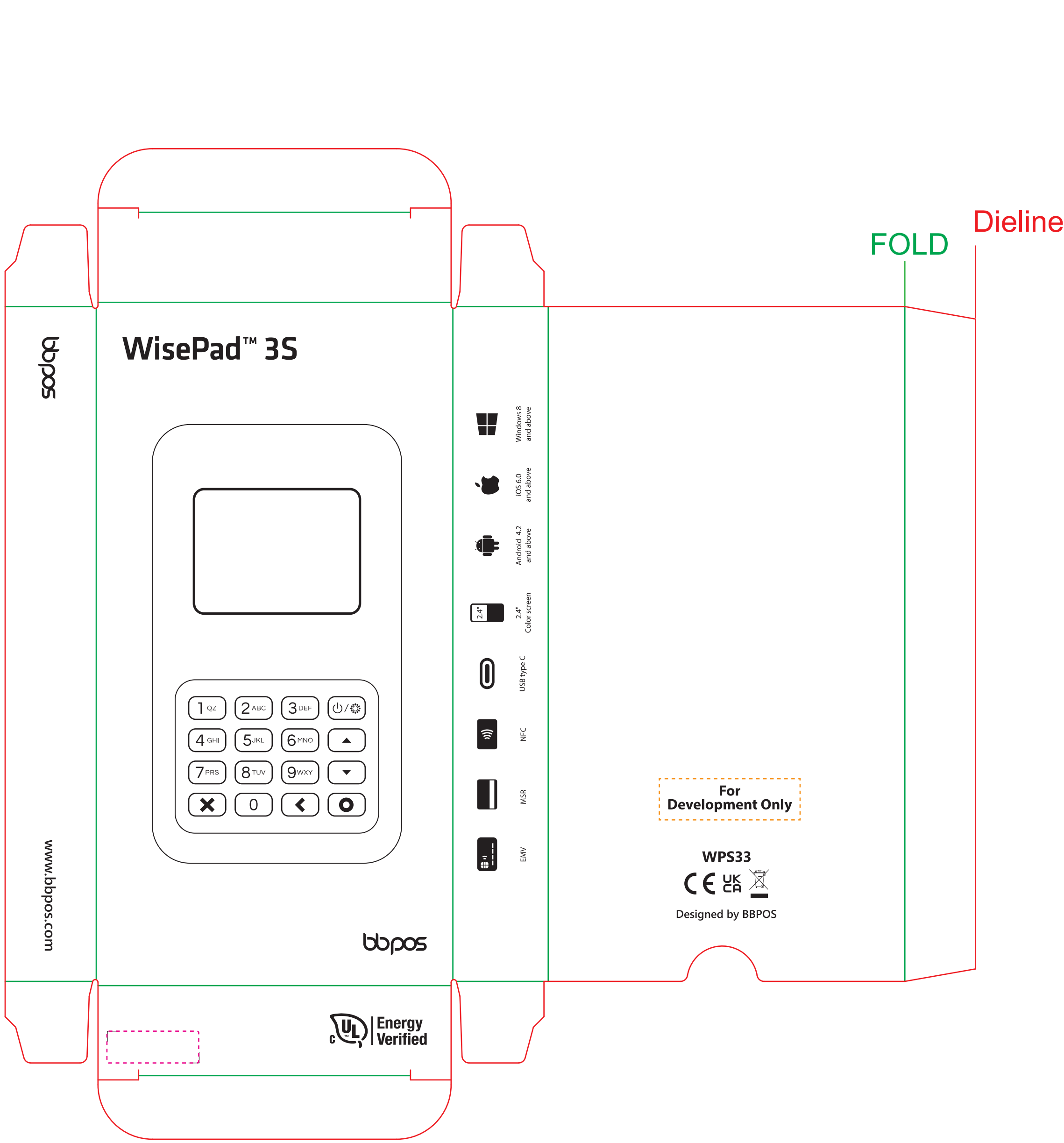


48.3mm x 17mm, R=2mm
Black PP sticker
Matt coating
word printed in 50% black



26mm x 9mm, R=1mm
Thickness = 0.15mm
White PP sticker
Matt lamination
word printed in black
Font: Arial Bold 14pt

GREEN LINE INDICATES FOLD LINE. DO NOT PRINT!!!!
RED LINE INDICATES DIE LINE. DO NOT PRINT!!!!

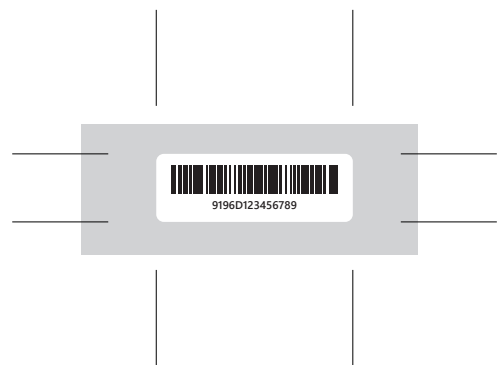


Dieline

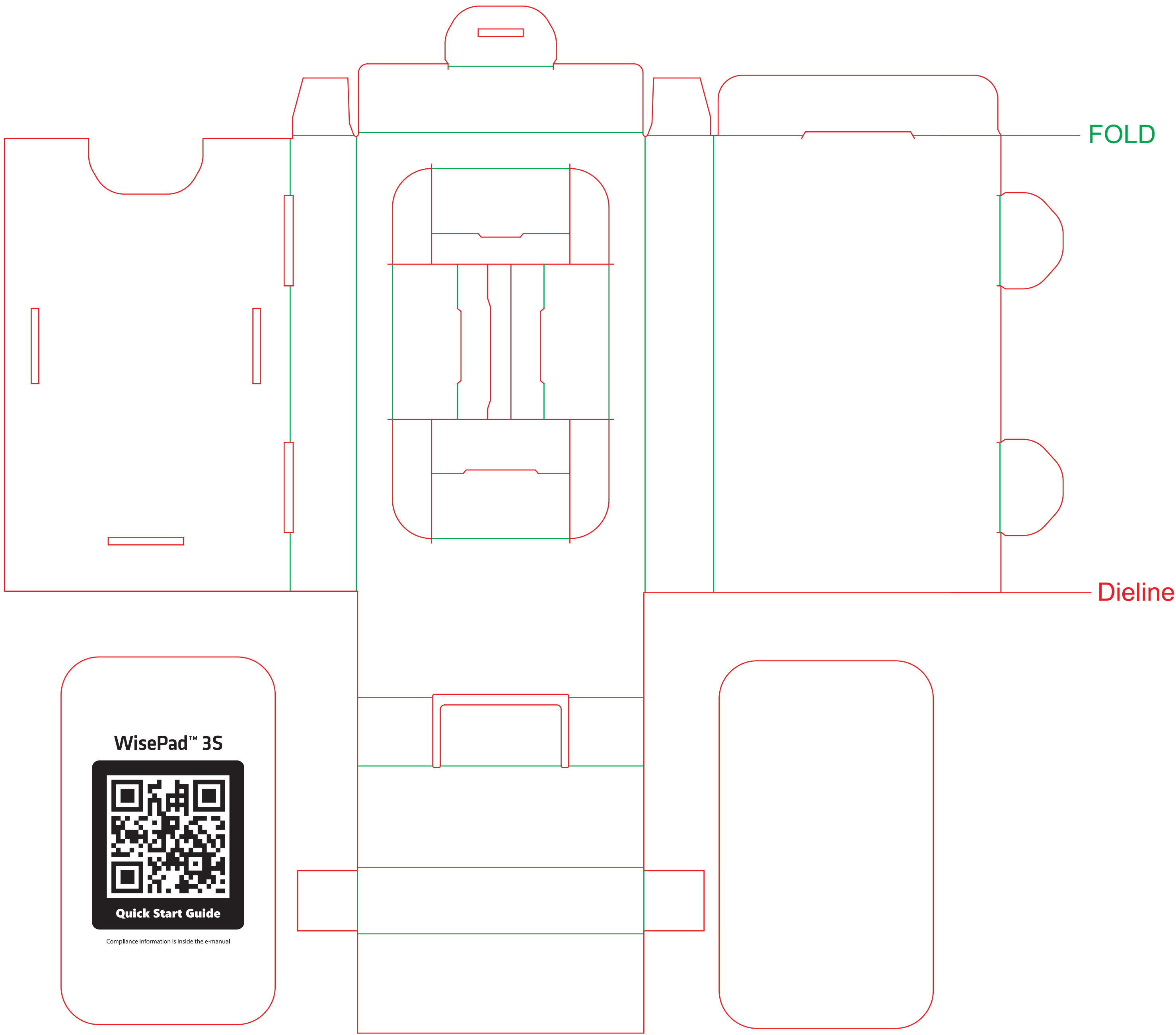
FOLD



39 mm x 11 mm, R=2mm
Thickness = 0.15mm
White PP sticker
Matt lamination
word printed in black

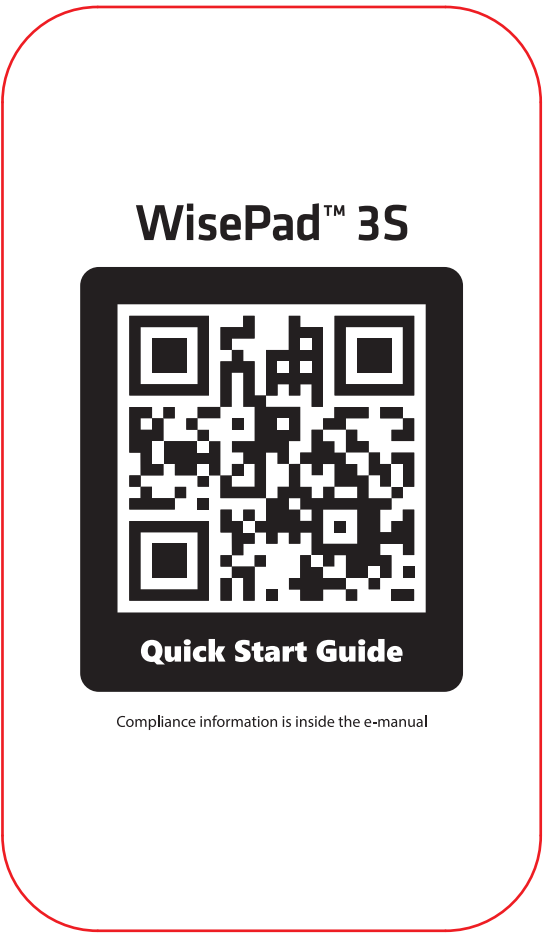


26mm x 9mm, R=1mm
Thickness = 0.15mm
SN Label
White PP label
Content printed in Black



FOLD

Dieline



Gift Box
Material: F-Flute Card board
Color: Brown paper color
Single color printing (CMYK Black)

Inner Tray
Material: F-Flute Card board
Color: Brown paper color
Single color printing (CMYK Black)