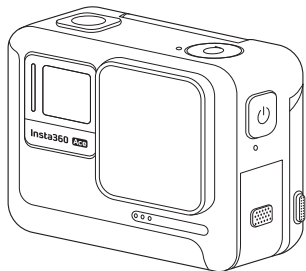


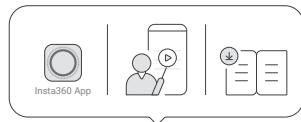
Insta360 Ace

QUICKSTART GUIDE

快速入门指南

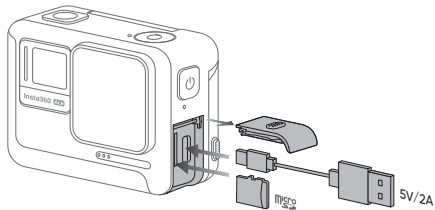


1 Scan code to get detailed tutorial

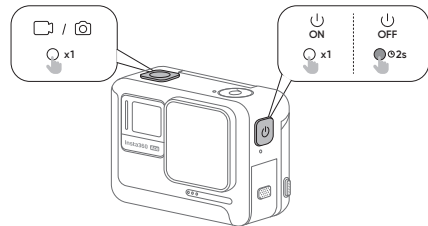


<https://www.insta360.com/guide/ace>

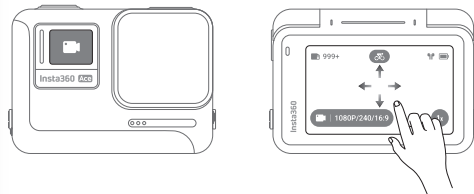
2 Open the USB Cover to insert a memory card and connect to a power source for charging



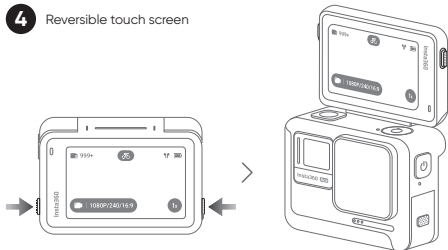
3 Body button function



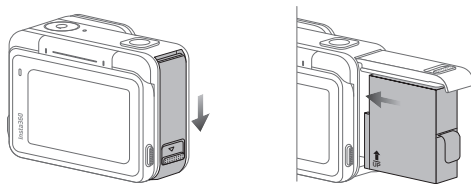
4 Screen Use



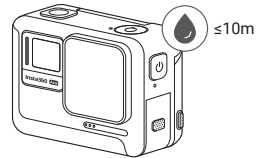
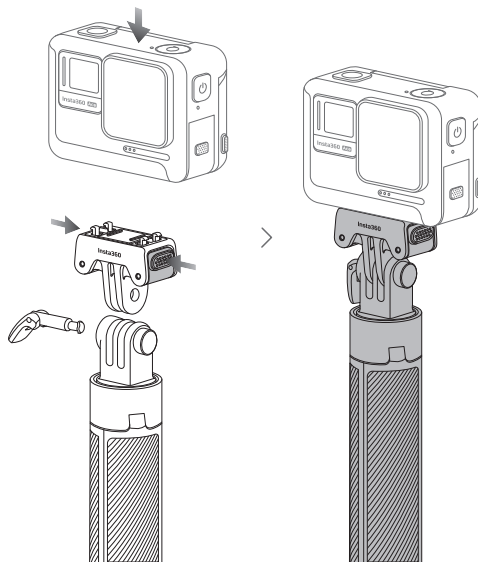
4 Reversible touch screen



5 The battery UP logo needs to point up



6 With two-claw quick release, you can install selfie stick and other accessories



Arashi Vision Inc.

ADD: 11th Floor, Building 2, Jinlitong Financial Center, Bao'an District,
Shenzhen, Guangdong, China

WEB: www.insta360.com

TEL: 400-833-4360 +1 800 6920 360

EMAIL: service@insta360.com

EC REP

Insta360 GmbH
Gartenfelder Straße 29-37, Gebäude 31/31.12 1.OG, 13599 Berlin, Germany
+49 177 8567813
service@insta360.com

Insta360 Ace

Specifications

Name	Insta360 Ace
Model	CINSBAXA
Input	5V=3A
Bluetooth	
Operation Frequency	Bluetooth: 2402~2480MHz
Output Power (E.I.R.P.)	<10dbm
WIFI	
Operation Frequency	2.4GHz WIFI: 2400~2483MHz 5.1GHz WIFI: 5150MHz~5250MHz; 5.8GHz WIFI: 5725MHz~5850MHz
Output Power (E.I.R.P.)	2.4GHz WIFI: <13dbm; 5.1GHz WIFI: <13dbm; 5.8GHz WIFI: <13dbm.
Battery Capacity	1700 mAh
Energy	6.54 Wh
Operation Temperature	-20°C - 40°C

Compliance Information

FCC Statement

This equipment has been tested and found to comply with the limits for a Class B digital device, pursuant to Part 15 of the FCC Rules. These limits are designed to provide reasonable protection against harmful interference in a residential installation. This equipment generates uses and can radiate radio frequency energy and, if not installed and used in accordance with the instructions, may cause harmful interference to radio communications. However, there is no guarantee that interference will not occur in a particular installation. If this equipment does cause harmful interference to radio or television reception, which can be determined by turning the equipment off and on, the user is encouraged to try to correct the interference by one or more of the following measures:

- Reorient or relocate the receiving antenna.
- Increase the separation between the equipment and receiver.
- Connect the equipment into an outlet on a circuit different from that to which the receiver is connected.
- Consult the dealer or an experienced radio/TV technician for help.

This device complies with part 15 of the FCC Rules. Operation is subject to the following two conditions:

(1) This device may not cause harmful interference, and (2) this device must accept any interference received, including interference that may cause undesired operation.

Changes or modifications not expressly approved by the party responsible for compliance could

void the user's authority to operate the equipment

FCC SAR:

1. The radiated output power of this device is below the FCC radio frequency exposure limits. Nevertheless, the device should be used in such a manner that the potential for human contact is minimized during normal operation.

The exposure standard for wireless devices employs a unit of measurement known as the Specific Absorption Rate, or SAR. The SAR limit set by the FCC is 1.6 W/Kg. Tests for SAR are conducted using standard operating positions accepted by the FCC with the device transmitting at its highest certified power level in all tested frequency bands. Although the SAR is determined at the highest certified power level, the actual SAR level of the device while operating can be well below the maximum value. This is because the device is designed to operate at multiple power levels so as to use only the power required to reach the network. In general, the closer you are to a wireless base station antenna, the lower the power output. To avoid the possibility of exceeding the FCC radio frequency exposure limits, human proximity to the antenna should be minimized.

For body worn operation, this model device has been tested and meets the FCC RF exposure guidelines when used with an accessory designated for this product or when used with an accessory that contains no metal and that positions the handset a minimum of 5mm from the body.

2. For body-worn operation, the device has been tested and meets the FCC RF exposure, the maximum SAR value is 1.049 W/kg at 5mm.

IC STATEMENT

This device complies with Industry Canada's licence-exempt RSSs. Operation is subject to the following two conditions:

- (1) This device may not cause interference; and
- (2) This device must accept any interference, including interference that may cause undesired operation of the device.

Le présent appareil est conforme aux CNR d'Industrie Canada applicables aux appareils

radio exempts de licence. L'exploitation est autorisée aux deux conditions suivantes :

- (1) l'appareil ne doit pas produire de brouillage, et
- (2) l'utilisateur de l'appareil doit accepter tout brouillage radioélectrique subi, même si le brouillage est susceptible d'en compromettre le fonctionnement.

IC SAR

For body-worn operation, the device has been tested and meets the IC RF exposure, The maximum SAR value is 1.049W/kg when the device used 5mm close to user.

Pour un fonctionnement porté sur le corps, l'appareil a été testé et répond à l'exposition aux RF IC, la valeur maximale de SAR est de 1.049W/kg lorsque l'appareil a utilisé 5mm près de l'utilisateur.

the device for operation in the band 5150–5250 MHz is only for indoor use to reduce the potential for harmful interference to co-channel mobile satellite systems.

les dispositifs fonctionnant dans la bande de 5 150 à 5 250 MHz sont réservés uniquement pour une utilisation à l'intérieur afin de réduire les risques de brouillage préjudiciable aux systèmes de satellites mobiles utilisant les mêmes canaux.



Declaration of Conformity

Arashi Vision Inc. hereby, declares that this product is in compliance with the essential requirement and other relevant provisions of the directive 2014/53/EU .

GB Compliance Statement

Arashi Vision Inc. hereby, declares that this product is in compliance with the essential requirement and other relevant provisions of Radio Equipment Regulations 2017.

The device is restricted to indoor use when operated in the European Community using frequency 5150MHz~5250MHz to reduce the potential for interference.

	BE	BG	CZ	DK	DE	EE
	IE	EL	ES	FR	HR	IT
	CY	LV	LT	LU	HU	MT
	NL	AT	PL	PT	RO	SI
	SK	FI	SE	UK(NI)	TR	NO
	CH	IS	LI			

	UK
--	----



WEEE Directive

Correctly dispose of this product. This marking indicates that this product should not be disposed with other household wastes throughout the EU/UK. To prevent possible harm to the environment or human health from uncontrolled waste disposal, recycle responsibly to promote the sustainable reuse of material resources. To safely recycle your device, please use return and collection systems or contact the retailer where the device was originally

purchased.

Japan Warning message

5.2 GHz band is restricted to indoor use only

電波法により 5.2 GHz 帯は屋内使用に限ります。

NCC Compliance Notice

取得審驗證明之低功率射頻器材，非經核准，公司、商號或使用者均不得擅自變更頻率、加大功率或變更原設計之特性及功能。

低功率射頻器材之使用不得影響飛航安全及干擾合法通信；經發現有干擾現象時，應立即停用，並改善至無干擾時方得繼續使用。

前述合法通信，指依電信管理法規定作業之無線電通信。

低功率射頻器材須忍受合法通信或工業、科學及醫療用電波輻射性電機設備之干擾。

應避免影響附近雷達系統之操作。

設備名稱 Equipment name：Insta360 Ace 運動相機型號 (型式) Type designation (Type)：

主型號：CINSBAXA

系列型號：CINSBAXB, CINSBAXC, CINSBAXD, CINSBAXE, CINSBAXF

單元 Unit	限用物質及其化學符號 Restricted substances and its chemical symbols					
	鉛 Lead (Pb)	汞 Mercury (Hg)	鎘 Cadmium (Cd)	六價鉻 Hexavalent chromium(Cr ⁺⁶)	多溴聯苯 Polybrominated biphenyls(PBB)	多溴二苯醚 Polybrominated diphenyl ethers(PBDE)
外殼	○	○	○	○	○	○
鏡頭	○	○	○	○	○	○
PCB 板	-	○	○	○	○	○
螺絲	-	○	○	○	○	○
電子線	-	○	○	○	○	○
配件	-	○	○	○	○	○

