

Photos of the external reference antenna used in radiated measurements of the *Bluetooth Low Energy* wireless radio module with model name of BGM241S22A

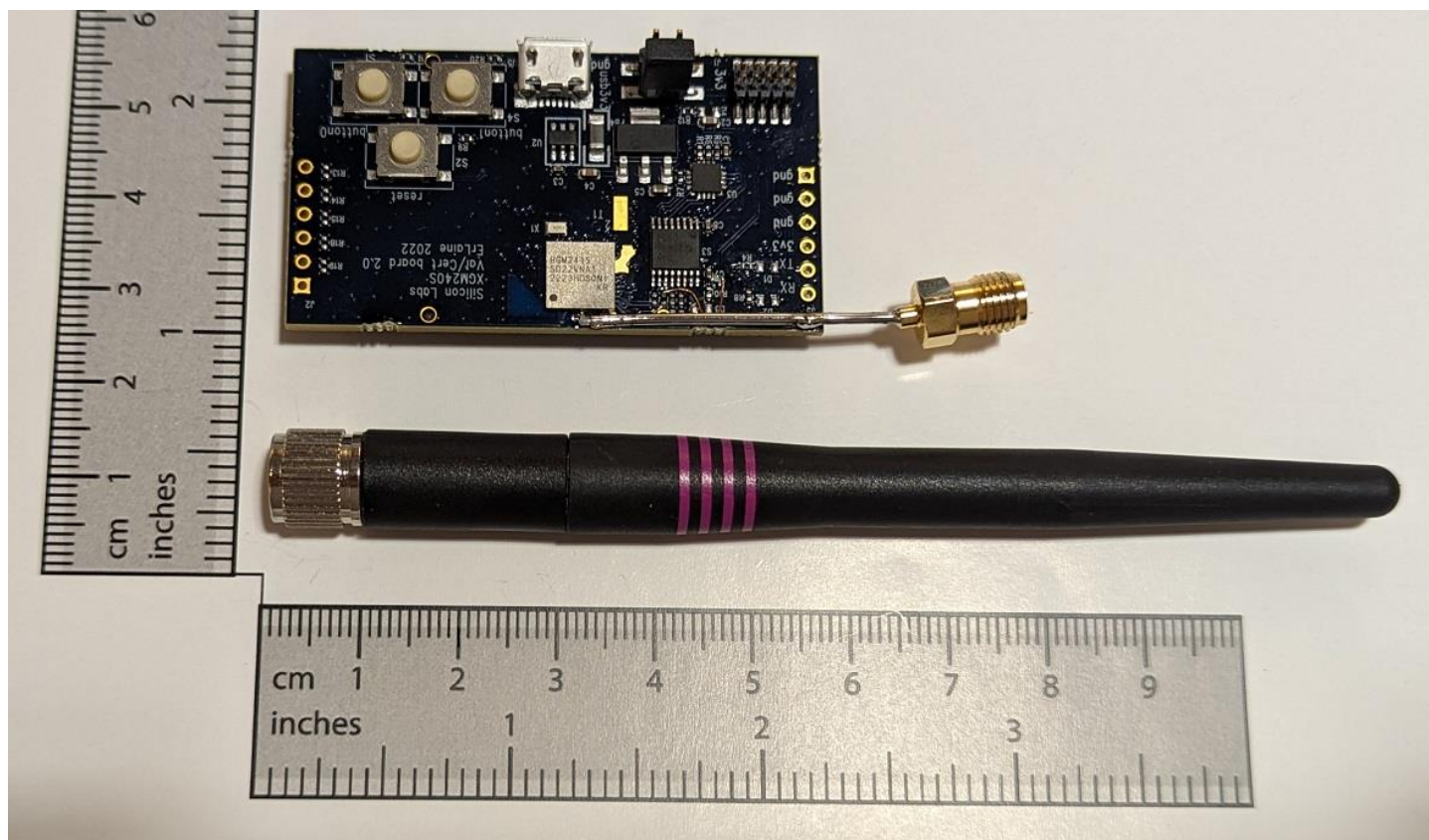


Figure 1a
Horizontal Full View of the Reference External Dipole Antenna,
next to the Certification Board used as the Host during Lab Testing.

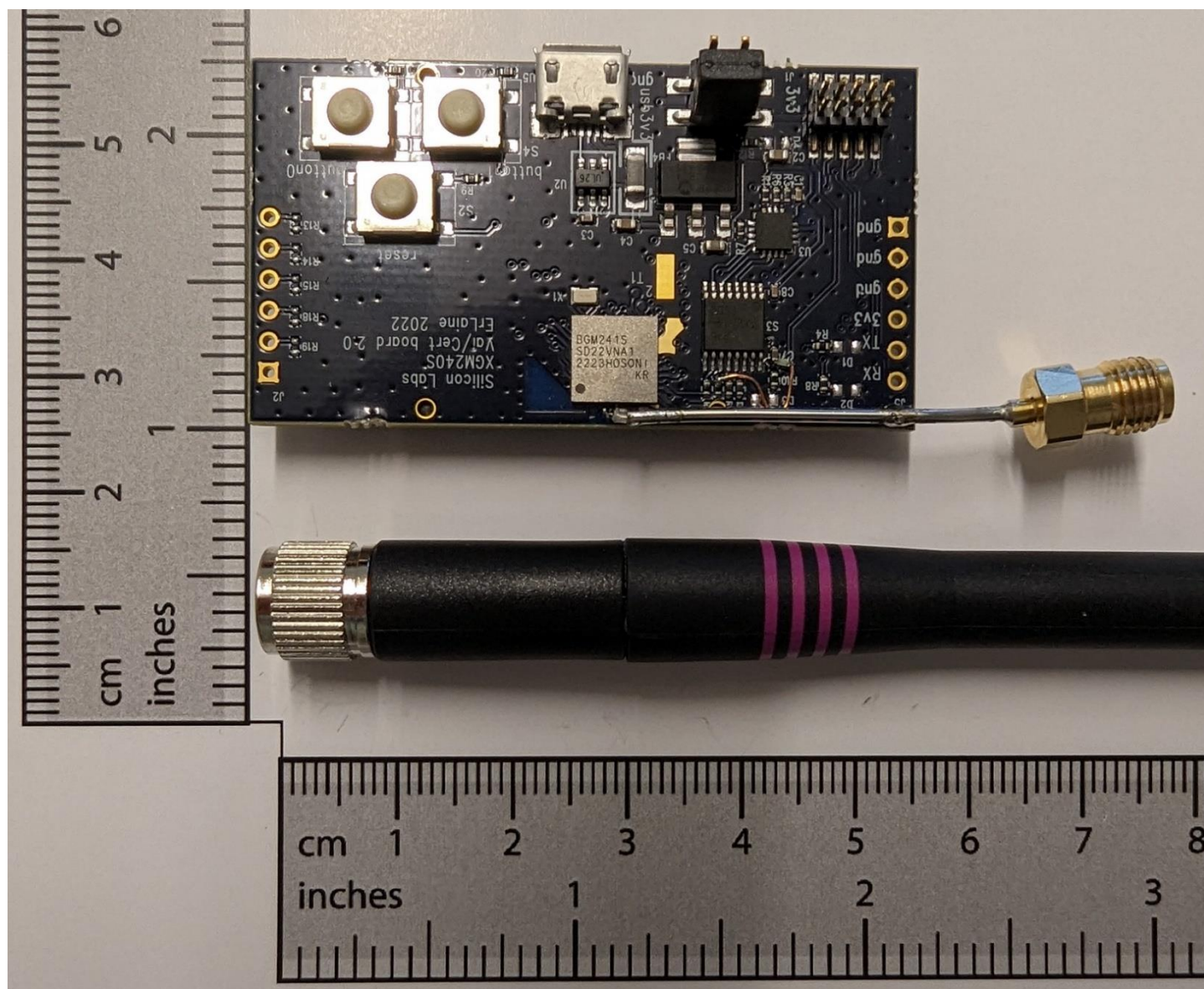


Figure 1b
Closer look at the Reference External Dipole Antenna,
next to the Certification Board used as the Host during Lab Testing.

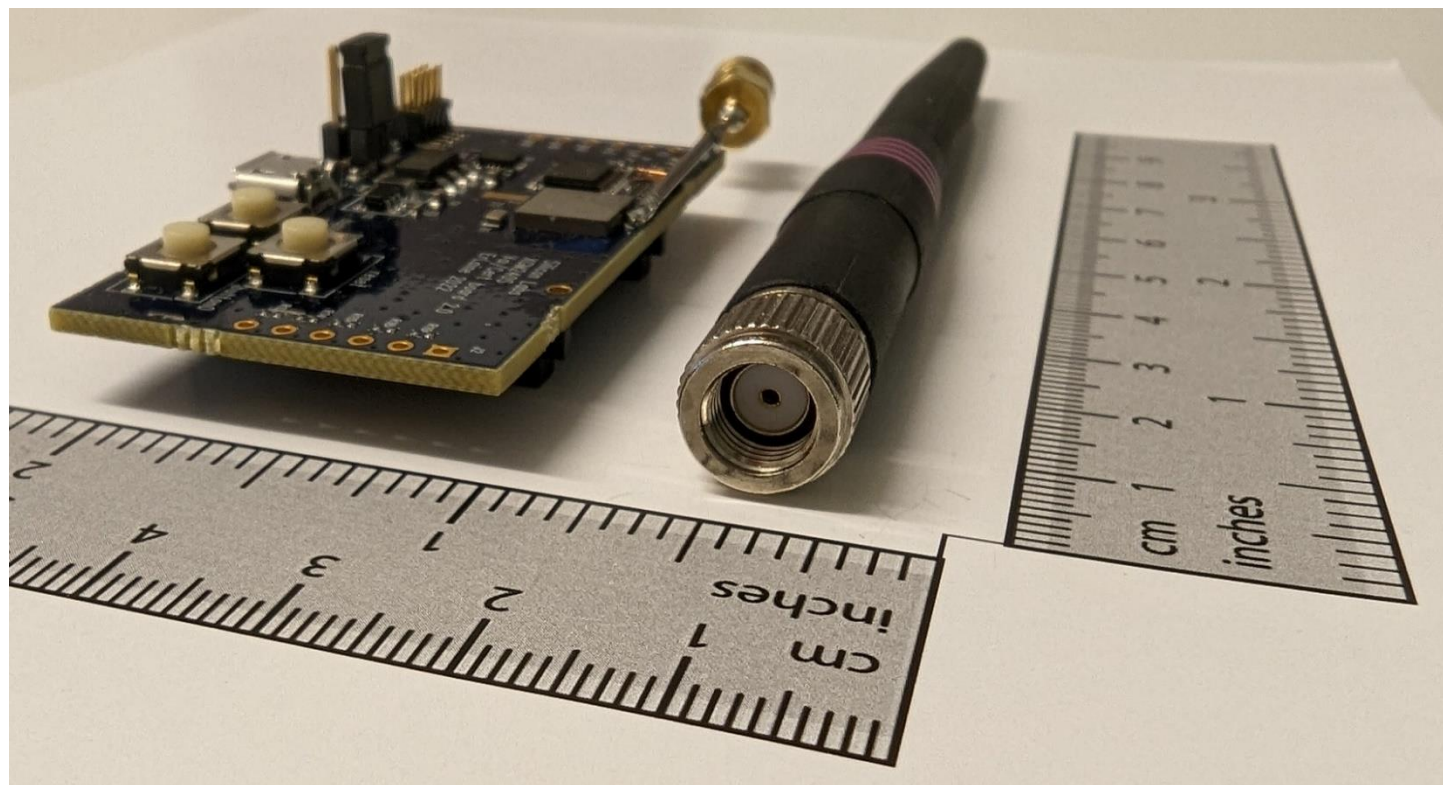


Figure 1
Detail of the External Antenna's RP-SMA Connector.
Antenna is the ANT-2.4-CW-CT-RPS by Linx Technologies Inc.

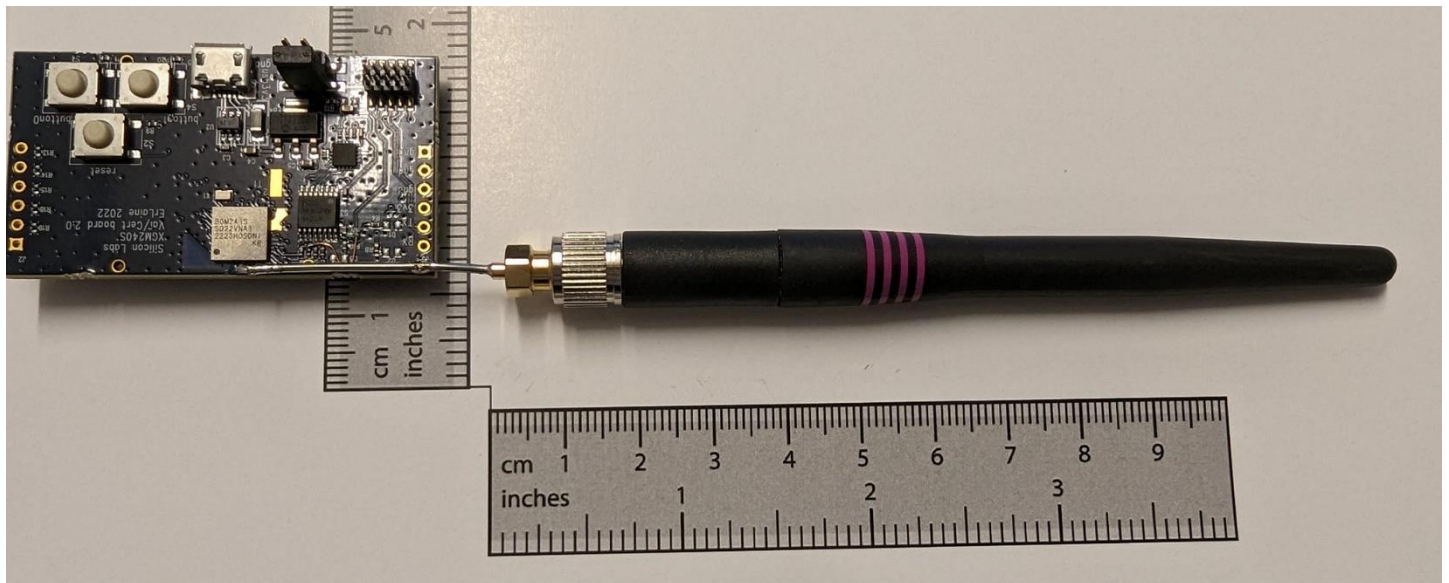


Figure 2
Detail of the External Antenna while Connected to the
Module's RF Pin using a Semi-rigid Coaxial Pigtail Cable