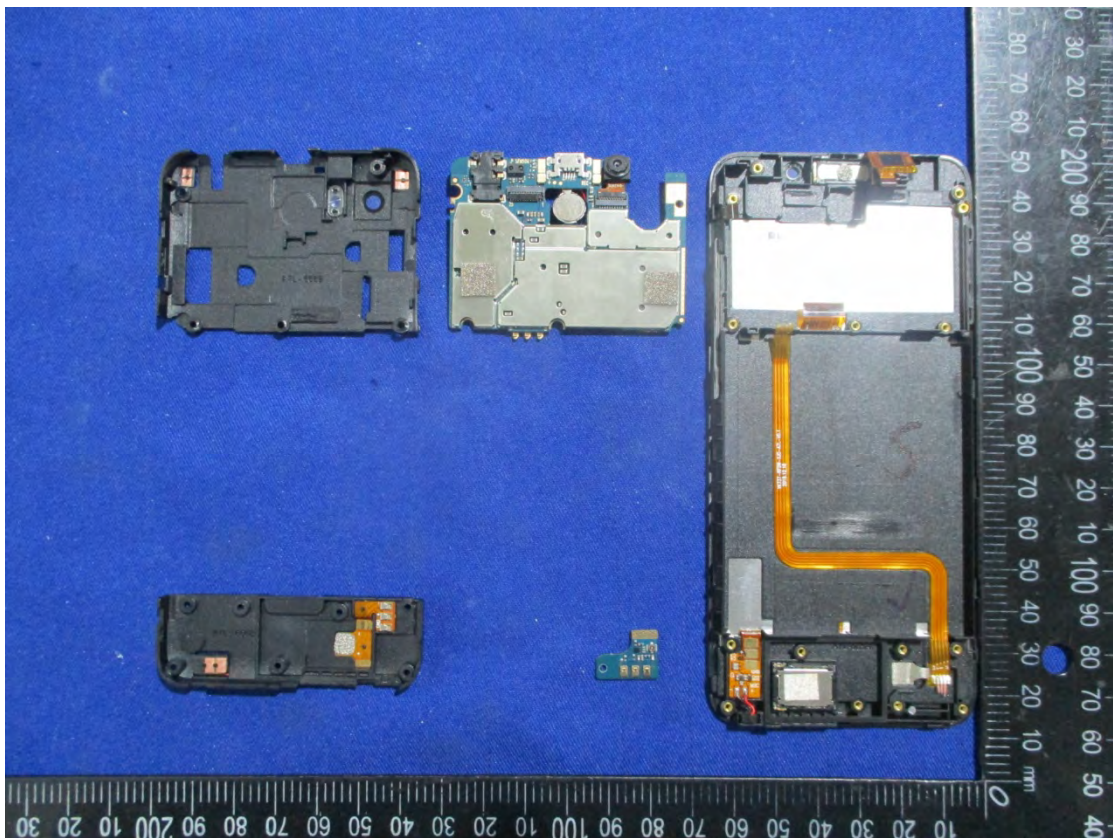
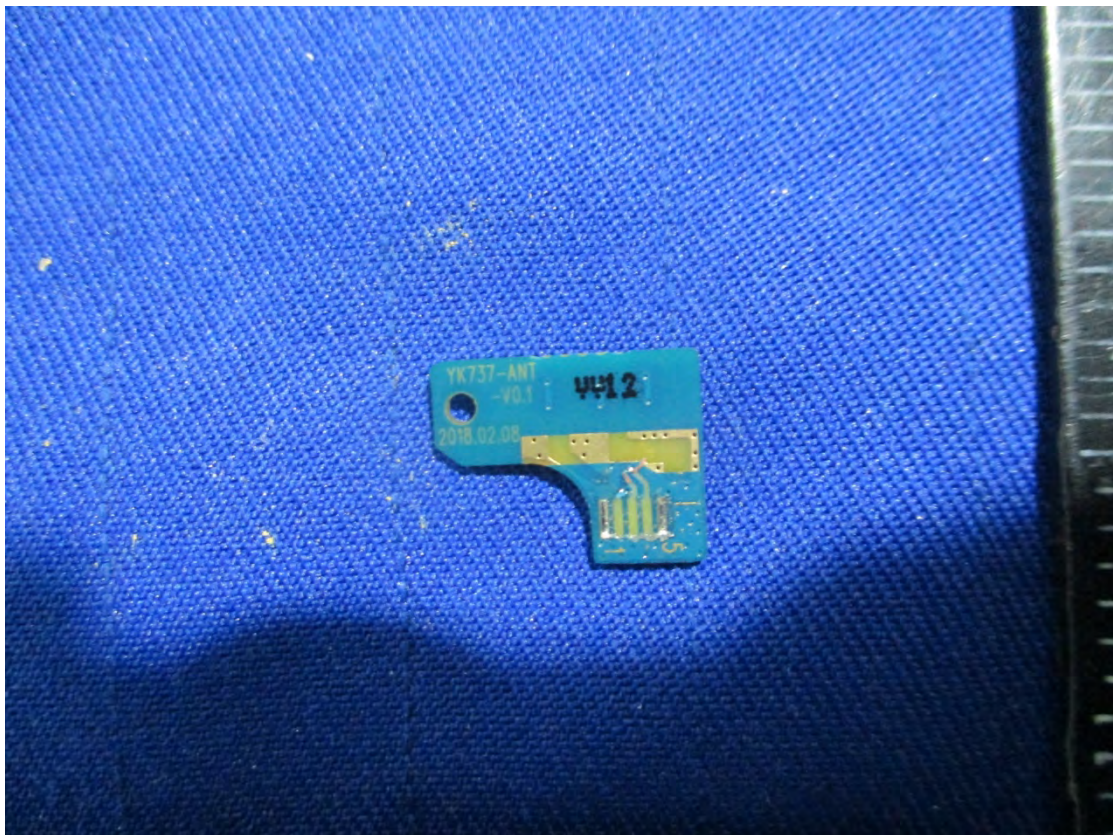
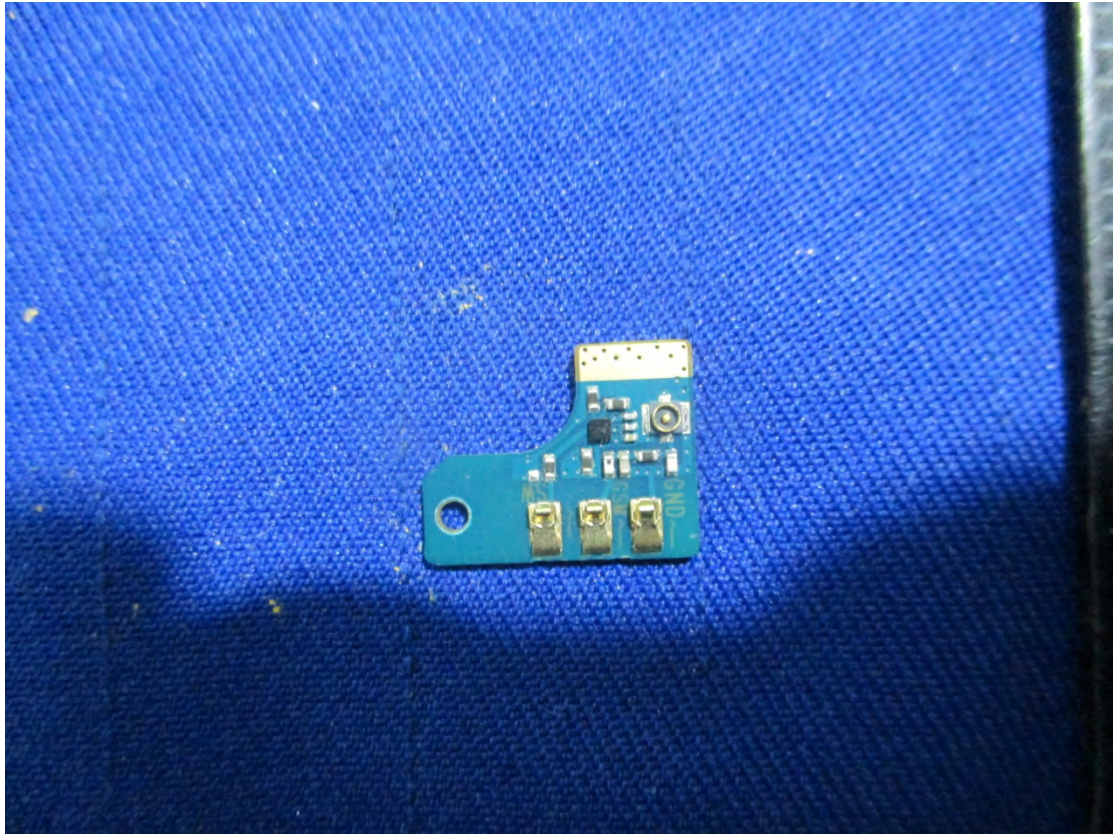


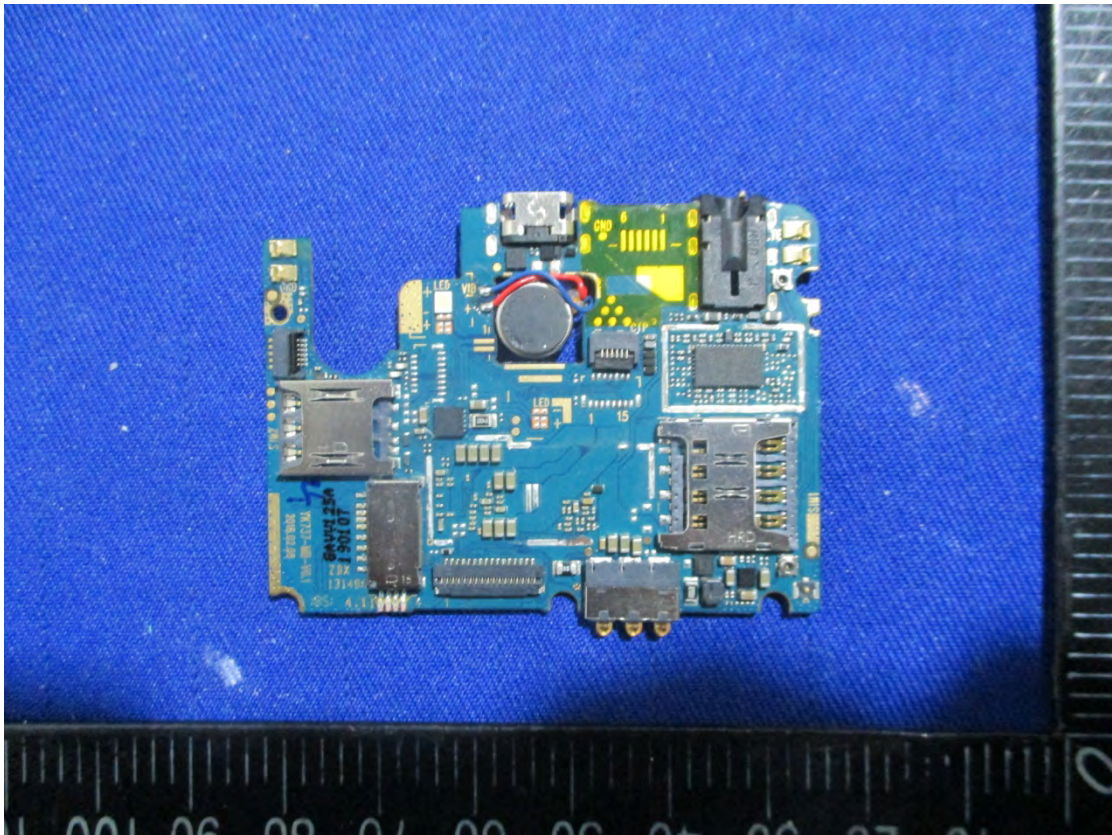
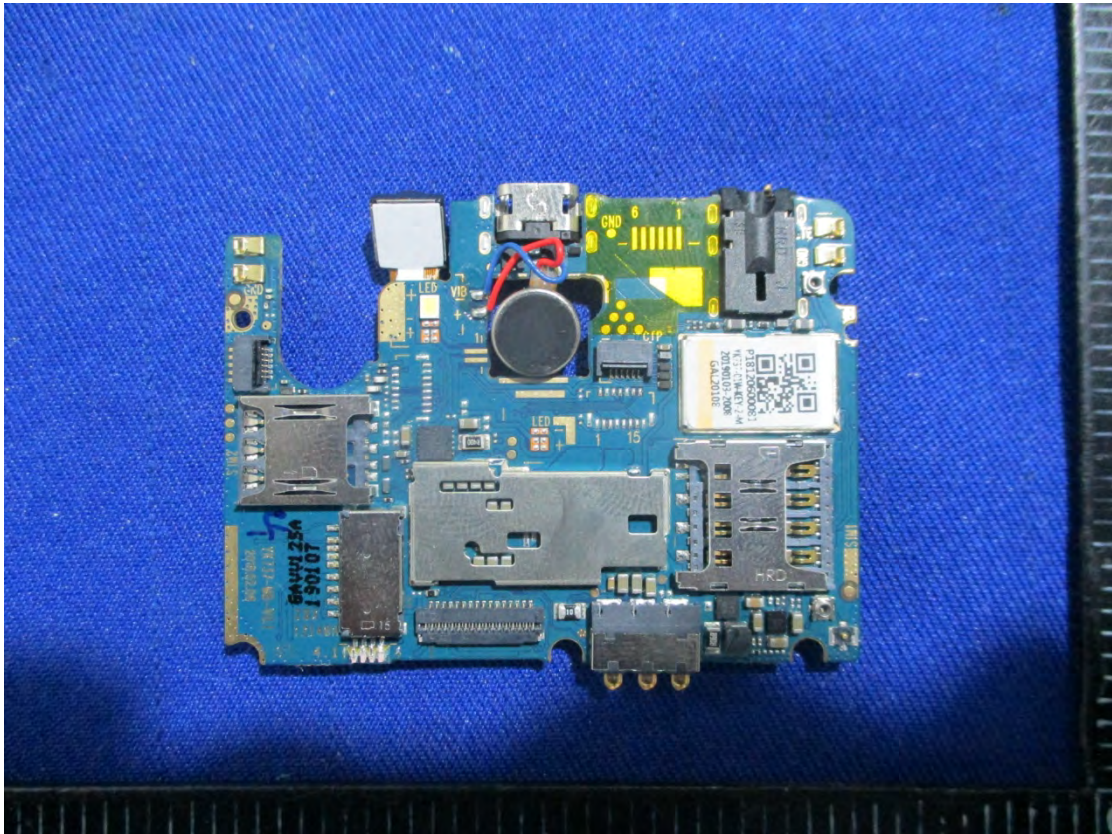
## EXHIBIT C – EUT INTERNAL PHOTOGRAPHS



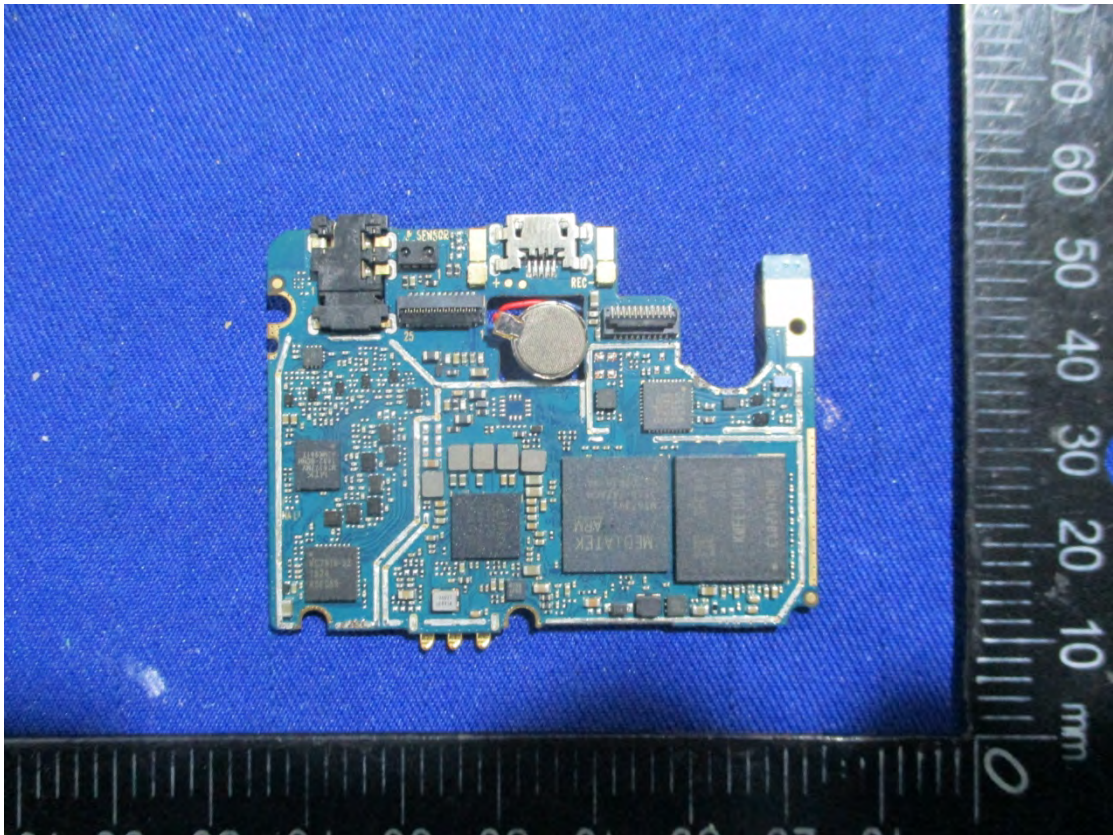
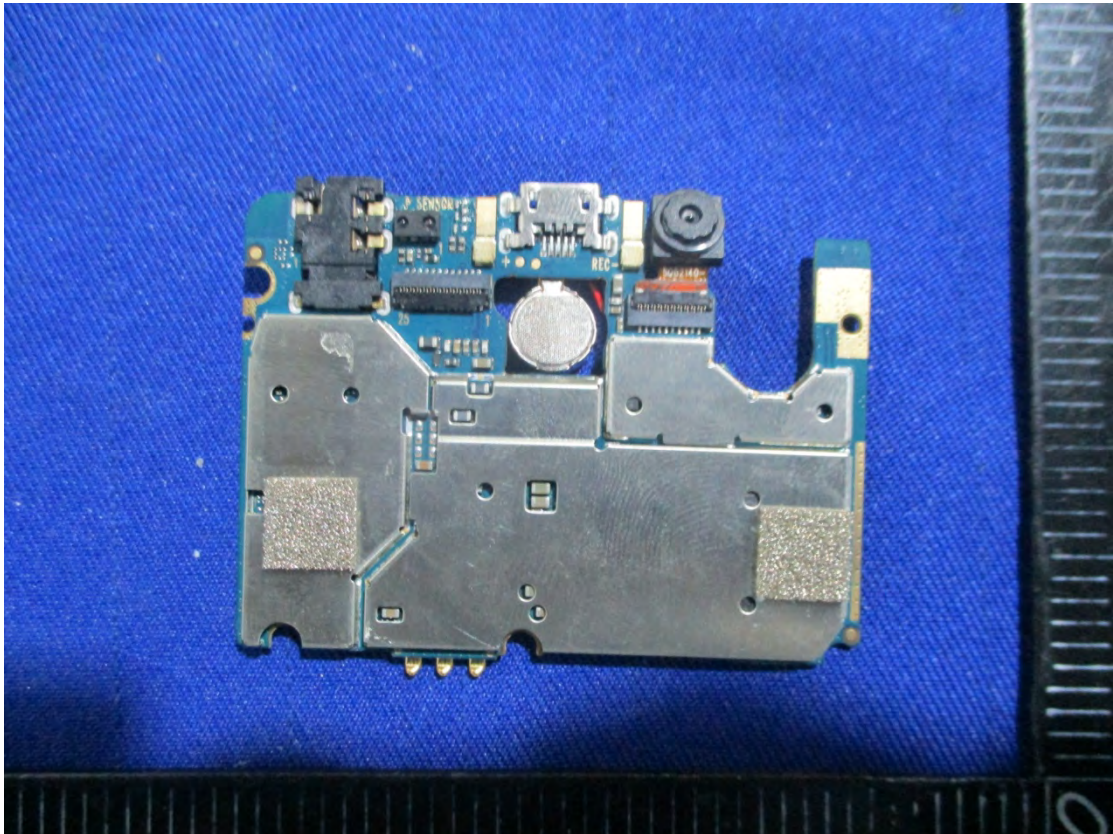














A close-up photograph of a MediaTek MT6625LN processor mounted on a blue printed circuit board (PCB). The processor is a small, square, black component with gold-colored pins. The text on the processor is printed in gold and includes "MEDIATEK", "MT6625LN", "1839-AJCNL", "BAP1M072", and "ATG39N11". To the right of the processor, there is a small black component labeled "NB8L" and "VJA". The PCB is populated with various other components, including capacitors and resistors, and has a complex pattern of gold-colored traces.

A close-up photograph of a MediaTek MT6177MV processor mounted on a blue printed circuit board (PCB). The processor is a square, black integrated circuit with the text "MTK", "MT6177MV", "1832-BCNH", and "ACMK941T" printed on its top surface. The PCB is densely populated with various surface-mount components, including numerous small, silver-colored capacitors and several larger, rectangular components, some of which are labeled with "MTK" and "D" followed by a number. The background is a solid blue color, likely the surface of the PCB or a protective layer.



**BT&Wifi Antenna View**



**GSM&WCDMA&LTE Antenna View**





**RX Antenna View**



**Battery View**



### Battery Label View

