



ENGINEERING REPORT NO. 121100
REGARDING THE RF INTERFERENCE FROM
A MODEL VER-1875 PAS ASSET BADGE TRANSMITTER

Report By: Robert Wisner

Test Date:
December 11, 2000

DESCRIPTION OF TEST ITEM: Asset Badge

MODEL NO: VER-1875

MANUFACTURER: Versus Technology, Inc.

APPLICABLE SPECIFICATIONS: FCC "Code of Federal Regulations"
Title 47, Part 15, Subpart C

QUANTITY OF ITEMS TESTED: One (1)

TEST PERFORMED BY: ELITE ELECTRONIC ENGINEERING COMPANY
Radio Interference Consultants
Downers Grove, Illinois 60515

DATE RECEIVED: December 11, 2000

DATE TESTED: December 11, 2000

PERSONNEL (OPERATIONS, OBSERVERS, AND CO-ORDINATORS):

CUSTOMER: Robert Wiser of Versus Technology, Inc. was present.

ELITE ELECTRONIC: Dan Crowder was test engineer

ABSTRACT: The model VER-1875 PAS Asset Badge does meet the radiated emission requirements of the FCC "Code of Federal Regulations" Title 47, Part 15 Subpart C, Sections 15.205 et seq. For Intentional Radiators, when tested per ANSI C63.4-1992. The radiated emission level closest to the limit (worst case) occurred at 1735.60 MHz. The emission level at this frequency was 1.1dB within the limit. See page 21 for more details.

**THIS REPORT SHALL NOT BE REPRODUCED, EXCEPT IN FULL, WITHOUT THE
WRITTEN APPROVAL OF VERSUS TECHNOLOGY, INC.**

Table of Contents

Paragraph	Description of Contents
1.0	Introduction
1.1	Description of Test Item
1.2	Purpose
1.3	Deviations, Additions and exclusions
1.4	Applicable Documents
1.5	Subcontractor Identification
1.6	Laboratory Conditions
2.0	Test Item Setup and Operation
2.1	Power Input
2.2	Grounding
2.3	Peripheral Equipment
2.4	Interconnect Cables
2.5	Operational Mode
3.0	Test Equipment
3.1	Test Equipment List
3.2	Calibration Traceability
3.3	Measurement Uncertainty
4.0	Requirements, Procedures and Results
4.1	Powerline Conducted Emissions
4.1.1	Requirements
4.2	Duty Cycle Factor Measurements
4.2.2	Procedures
4.2.3	Results
4.3	Radiated Measurements
4.3.1	Requirements
4.3.2	Procedures
4.3.3	Results
4.4	Occupied Bandwidth Measurements
4.4.1	Requirements
4.4.2	Procedures
4.4.3	Results
5.0	Conclusion
6.0	Certification
7.0	Endorsement Disclaimer

Table I – Equipment List

Total Number of pages in this document, (including data sheets): Twenty-three (21)

**THIS REPORT SHALL NOT BE REPRODUCED, EXCEPT IN FULL, WITHOUT THE
WRITTEN APPROVAL OF VERSUS TECHNOLOGY, INC.**

**Measurement of RF Interference from
A Model VER-1875 PAS Asset Badge Transmitter**

1.0 Introduction:

1.1 Description of Test Item: On December 11, 2000, a series of radio interference measurements were performed on a model VER-1875 PAS Asset Badge Transmitter, (hereinafter referred to as the test item) serial number (not assigned). The test item was designed to transmit at approximately 433.9 MHz using an internal metallic antenna. The tests were performed for Versus Technology, Inc. of Traverse City, Michigan.

1.2 Purpose: The test series was performed to determine if the test item meets the radiated RF emission requirements of the FCC “Code of Federal Regulations” Title 47, Part 15, Subpart C, Sections for Intentional Radiators. Testing was performed in accordance with ANSI C63.4-1992.

1.3 Deviations, Additions and Exclusions: There were no deviations, additions to, or exclusions from the test specification during this test series.

1.4 Applicable Documents: The following documents of the exact issue designated form part of this document to the extent specified herein:

- Federal Communications Commission “Code of Federal Regulations”, Title 47, Part 15, Subpart C, dated 1 October 1999
- ANSI C63.4-1992, “American National Standard for methods of measurement of Radio-Noise Emissions from Low-Voltage Electrical and Electronic Equipment in the Range of 9 kHz to 40 GHz”

1.5 Subcontractor Identification: This series of tests was performed by the Elite Electronic Engineering Company, of Downers Grove, Illinois. The laboratory is accredited by the National Institute of Standards and Technology (NIST) under the National Voluntary Laboratory Accreditation Program (NVLAP). NVLAP Lab Code: 100278-0.

THIS REPORT SHALL NOT BE REPRODUCED, EXCEPT IN FULL, WITHOUT THE WRITTEN APPROVAL OF VERSUS TECHNOLOGY, INC.

1.6 Laboratory Conditions: The temperature at the time of the test was 21°C and the relative humidity was 25%.

2.0 Test Item Setup and Operation:

2.1 Power Input: The test item received 3.0 VDC from internal battery.

2.2 Grounding: Since the test item was powered with 3.0 VDC through a battery, it was ungrounded during the tests.

2.3 Peripheral Equipment: There was no peripheral equipment.

2.4 Interconnect Cables: There were no interconnect cables.

2.5 Operational Mode: For all tests the test item was energized and placed on a 80cm high non-conductive stand. For all tests, the test item was set to CW mode, thereby setting the unit to transmit continuously. The battery voltage was periodically checked to ensure proper operation at maximum level. The tests were performed with the test item operating at 433.9MHz.

3.0 Test Equipment:

3.1 Test Equipment List: A list of the test equipment used can be found on Table I page 16. All equipment was calibrated per the instruction manuals supplied by the manufacturer.

The fundamental, harmonics and spurious emissions were measured with an HP 8566B spectrum analyzer.

The spectrum analyzer peak-detected readings were converted to average readings using a duty cycle factor.

All measurements were taken with the resolution and video bandwidth of the measuring instrument adjusted to 100kHz below 1GHz and 1MHz above 1GHz.

THIS REPORT SHALL NOT BE REPRODUCED, EXCEPT IN FULL, WITHOUT THE WRITTEN APPROVAL OF VERSUS TECHNOLOGY, INC.

The duty cycle factor was calculated from the pulse train for the test item. A data plot was obtained to determine the duty cycle factor. The duty cycle factor was computed as the Word on-time divided by the Word-period (on-time + off-time). The duty cycle factor in dB = $20 \log (\text{Word on} / \text{Word period})$. If the word period is more than 100 milliseconds, then the duty cycle would be computed on the maximum Word on-time during a 100 millisecond period.

3.2 Calibration Traceability: Test equipment is maintained and calibrated on a regular basis. All calibrations are traceable to the National Institute of Standards and Technology (NIST).

3.3 Measurement Uncertainty: All measurements are an estimate of their true value. The measurement uncertainty characterizes, with a specified confidence level, the spread of values which may be possible for a given measurement system.

The measurement uncertainty budgets were based on guidelines in “ISO Guide to the Expression of Uncertainty in Measurements” and NAMAS NIS81 “The Treatment of Uncertainty in EMC Measurements.”

The measurement uncertainty for these tests is presented below:

Radiated Emission Measurements:

Combined Standard Uncertainty	2.26	-2.18
Expanded Uncertainty (95% confidence)	4.5	-4.4

4.0 Requirements, Procedures and Results:

4.1 Powerline Conducted Emissions:

4.1.1 Requirements: Since the test item was powered by internal battery, no conducted emissions tests were performed.

THIS REPORT SHALL NOT BE REPRODUCED, EXCEPT IN FULL, WITHOUT THE WRITTEN APPROVAL OF VERSUS TECHNOLOGY, INC.

4.2 Duty Cycle Factor Measurements:

4.2.2 Procedures: The duty cycle factor was used to convert peak-detected readings to average readings. This factor was computed from the time domain trace of the pulse modulation signal.

With the transmitter set up to transmit for maximum pulse density, the time domain trace was displayed on the spectrum analyzer. This trace was obtained by tuning center frequency to the transmitter frequency and then setting a zero span width with 10msec/div. The amplitude setting was adjusted so that the on/off transitions cleared the 4th division from the bottom of the display. The markers were set at beginning and end of a word period. If the word period exceeded 100 msec, the word period was set to 100 msec. The on-time and off-time are then measured. The on-time was total time signal level exceeds the 4th division. Off-time is time under for the word period. The duty cycle is then computed as the (On-time/word period) where the word period = (On-time + Off-time).

4.2.3 Results: The plot of the duty cycle is shown on page 17. The duty cycle factor was computed to be -19.2dB.

4.3 Radiated measurements:

4.3.1 Requirements: The test item must comply with the requirements of FCC “Code of Federal Regulations” Title 47, Part 15, Subpart C, Section 15.205 et seq.

THIS REPORT SHALL NOT BE REPRODUCED, EXCEPT IN FULL, WITHOUT THE WRITTEN APPROVAL OF VERSUS TECHNOLOGY, INC.

Paragraph 15.231 (e) has the following radiated emission limits:

Fundamental Frequency MHz	Field Intensity uV/m @ 3 meters	Field Strength Harmonics and Spurious @ 3 meters
260 to 470	1,500 to 5,000*	150 to 500*
*- Linear Interpolation		

For 433.9 MHz, the limit at the fundamental is 4383.3uV/m @ 3m and the limit on the harmonics below 960 MHz is 438.3uV/m @ 3m. The limit of the harmonics above 960 MHz is 500 uV/m.

In addition, emissions appearing in the Restricted Bands of Operation listed in paragraph 15.205 (a) shall not exceed the general requirements shown in paragraph 15.209.

4.3.2 Procedures: All tests were performed in a 32ft. x 20ft. x 18ft. hybrid ferrite-tile/anechoic absorber lined test chamber. The floor and ceiling of the shielded chamber are lined with ferrite tiles. Anechoic absorber material is installed over the ferrite tile. The floor of the chamber issued as the ground plane. The chamber complies with ANSI C63.4 1992 for site attenuation.

The shielded enclosure prevents emissions from other sources, such as radio and TV stations from interfering with the measurements. All power lines and signal lines entering the enclosure pass through filters on the enclosure wall. The power line filters prevent extraneous signals from entering the enclosure on these leads.

THIS REPORT SHALL NOT BE REPRODUCED, EXCEPT IN FULL, WITHOUT THE WRITTEN APPROVAL OF VERSUS TECHNOLOGY, INC.

Since a quasi-peak detector requires long integration times, it is not practical to automatically sweep through the quasi-peak levels. Therefore, radiated emissions from the test item were first scanned using a peak detector and automatically plotted. The broadband measuring antenna was positioned at a 3-meter distance from the test item. The frequency range from 30MHz to 5000MHz was investigated using a peak detector function with the receive antenna at horizontal antenna polarization. The frequencies where significant emission levels were noted were then re-measured using the quasi-peak detector.

Final radiated emissions were performed on all significant broadband and narrowband emissions found in the preliminary sweeps using the following methods:

- 1) Measurements were made using a quasi-peak detector and a broadband bi-log antenna.
- 2) To ensure that maximum, or worst case, emission levels were measured, the following steps were taken:
 - (a) The test item was rotated so that all of its sides were exposed to the receiving antenna.
 - (b) Since the measuring antenna is linearly polarized, both horizontal and vertical field components were measured.
 - (c) The measuring antenna was raised and lowered from 1 to 4 meters for each antenna polarization to maximize the readings.

4.3.3 Results: The preliminary plot, with the test item transmitting at 433.9 MHz, is presented on pages 18 and 19. The plots are presented for a reference only and are not used as official data.

THIS REPORT SHALL NOT BE REPRODUCED, EXCEPT IN FULL, WITHOUT THE WRITTEN APPROVAL OF VERSUS TECHNOLOGY, INC.

The final open area radiated levels, with the test item transmitting at 433.9 MHz, are presented on data page 21. As can be seen from the data, all emissions measured from the test item were within the specification limits.

The emissions level closest to the limit (worst case) occurred at 1735.60 MHz. The emissions level at this frequency was 1.1 dB within the limit. See data page 21 for details. A picture of the test configuration which yielded the highest, or worst case, radiated emission levels are shown on Figure 1A.

4.4 Occupied Bandwidth Measurements:

4.4.1 Requirements: In accordance with paragraph 15.231 (c), all emissions within 20dB of the peak amplitude level of the center frequency are required to be within a band less than 0.25% of the center frequency wide.

4.4.2 Procedures: The test item was placed on an 80cm high non-conductive stand. The unit was set to transmit in CW mode. With an antenna positioned nearby, occupied bandwidth emissions were displayed on the spectrum analyzer. The resolution bandwidth was set to 30 kHz and span was set to 2 MHz. The frequency spectrum near the fundamental was plotted.

4.4.3 Results: The plot of the emissions near the fundamental frequency are presented on data page 21. As can be seen from this data page, the transmitter met the occupied bandwidth requirements.

THIS REPORT SHALL NOT BE REPRODUCED, EXCEPT IN FULL, WITHOUT THE WRITTEN APPROVAL OF VERSUS TECHNOLOGY, INC.

5.0 Conclusion:

It was found that the Versus Technology, Inc. model VER-1825 Asset Badge does meet the radiated emission requirements of the FCC “Code of Federal Regulations” Title 47, Part 15, Subpart (c), Section 15.205 et seq. for Intentional Radiators, when tested per ANSI C63.4-1992.

6.0 Certification:

Versus Technology Inc. certifies that the information contained in this report was obtained under conditions, which meet or exceed those specified in the test specification.

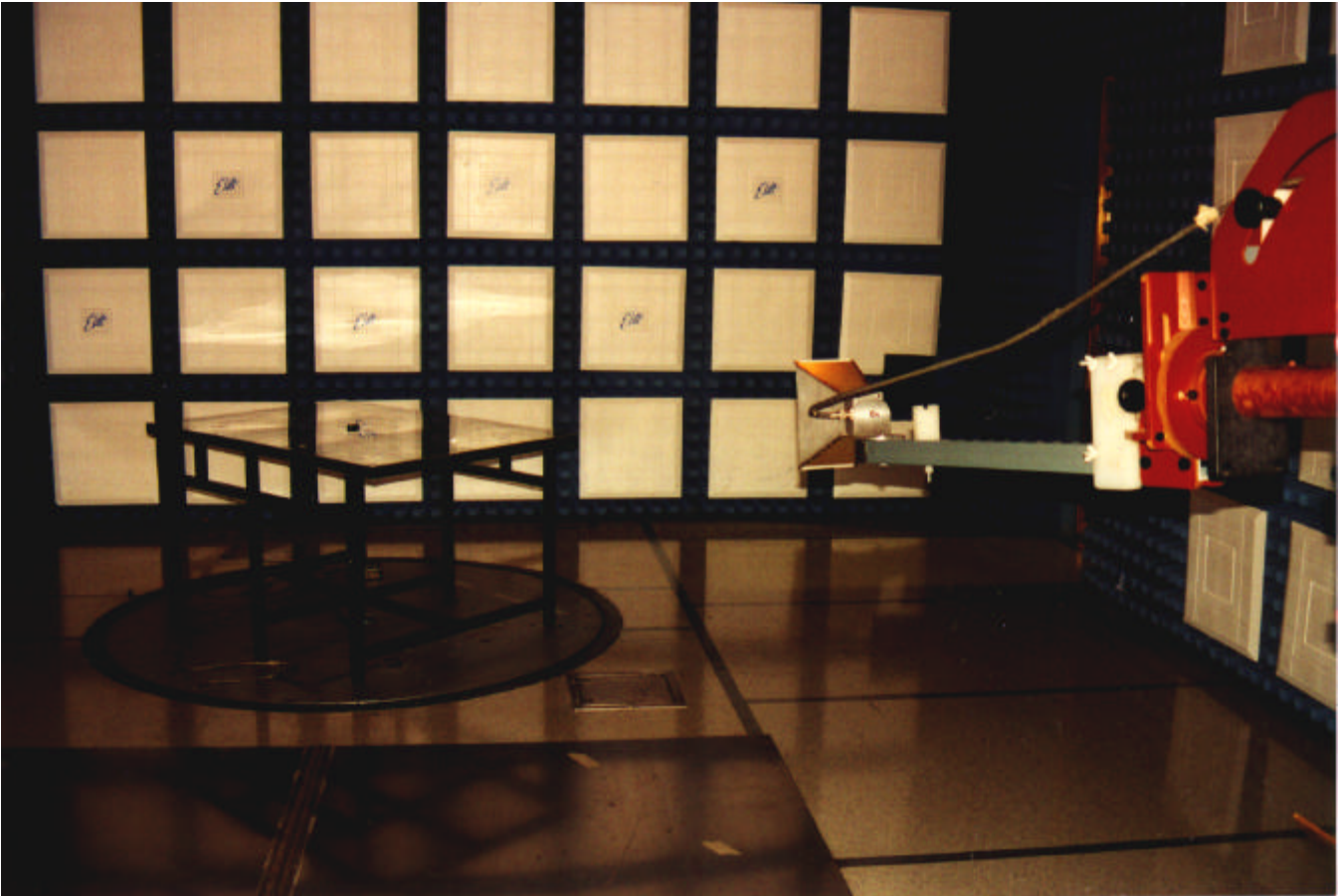
The data presented in this test report pertains only to the test item at the test date as operated by Versus Technology, Inc. personnel. Any electrical or mechanical modification made to the test item subsequent to the specified test date will serve to invalidate the data and void this certification.

7.0 Endorsement Disclaimer:

This report must not be used to claim product endorsement by NVLAP or any agency of the U.S. Government.

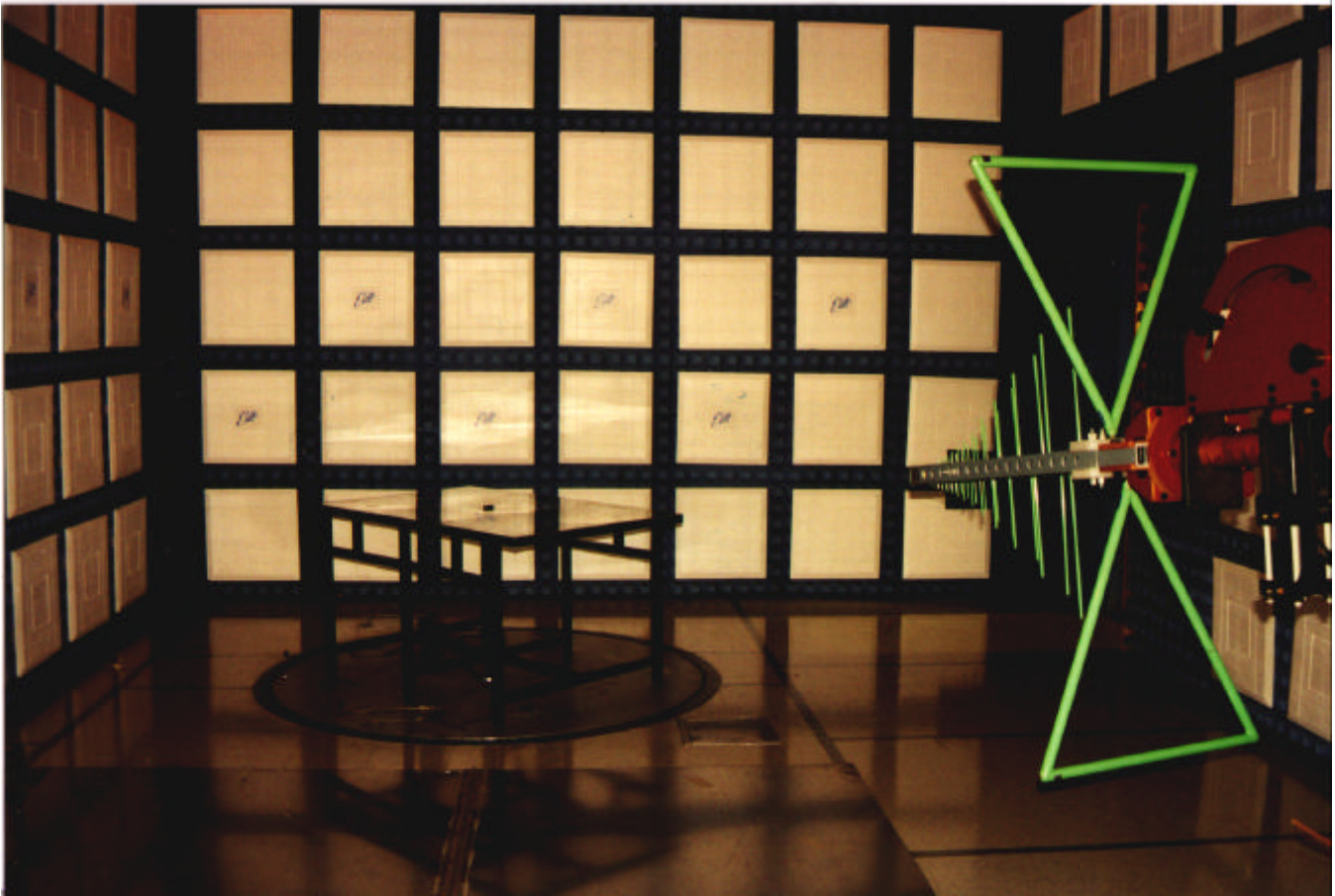
**THIS REPORT SHALL NOT BE REPRODUCED, EXCEPT IN FULL, WITHOUT THE
WRITTEN APPROVAL OF VERSUS TECHNOLOGY, INC.**

FIGURE 1A TEST SETUP



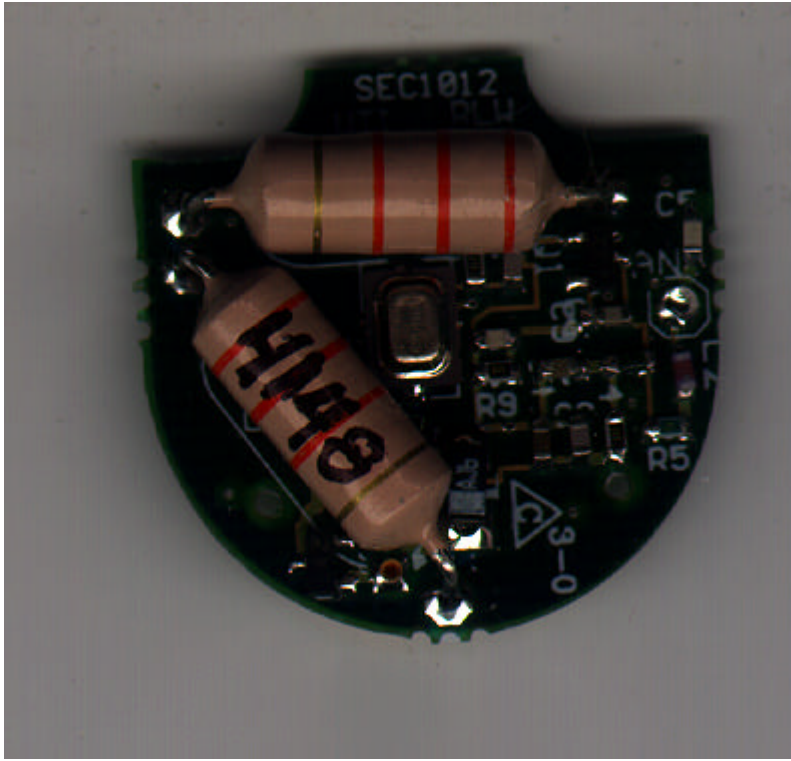
**THIS REPORT SHALL NOT BE REPRODUCED, EXCEPT IN FULL, WITHOUT THE
WRITTEN APPROVAL OF VERSUS TECHNOLOGY, INC.**

FIGURE 1B TEST SETUP

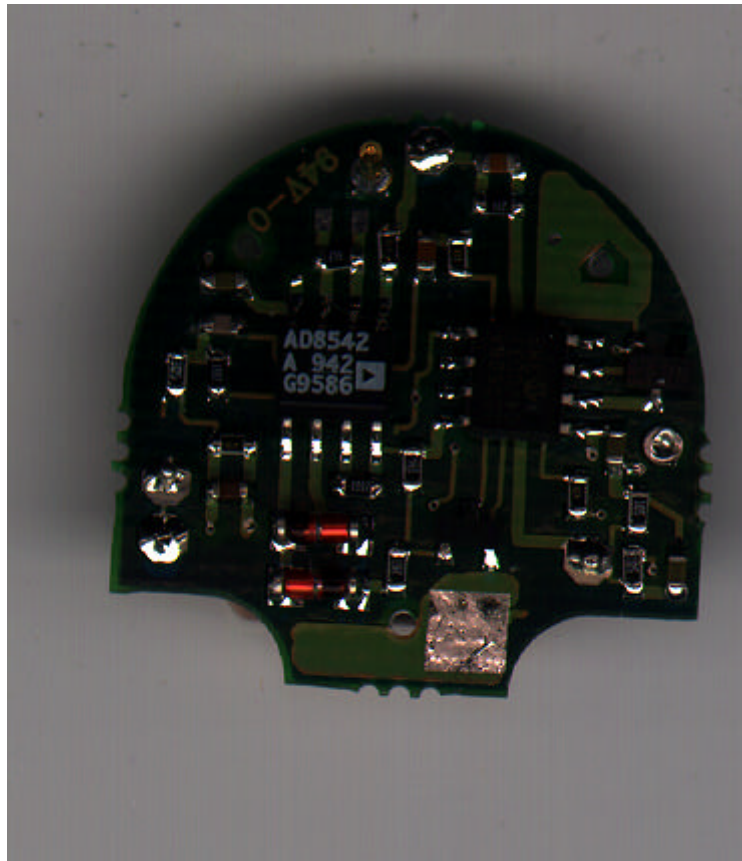


THIS REPORT SHALL NOT BE REPRODUCED, EXCEPT IN FULL, WITHOUT THE WRITTEN APPROVAL OF VERSUS TECHNOLOGY, INC.

Transmitter Board Top



Transmitter Board Bottom



THIS REPORT SHALL NOT BE REPRODUCED, EXCEPT IN FULL, WITHOUT THE WRITTEN APPROVAL OF VERSUS TECHNOLOGY, INC.

Table 1 (EQUIPMENT LIST)

ENGINEERING TEST REPORT NO. 23302

TABLE 1: TEST EQUIPMENT LIST

ELITE ELECTRONIC ENG. INC.							Page: 1
Eq ID	Equipment Description	Manufacturer	Model No.	Serial No.	Frequency Range	Cal Date	Cal Inv Due Date
Equipment Type: ACCESSORIES, MISCELLANEOUS							
XZG1	ATTENUATOR/SWITCH DRIVER	HEWLETT PACKARD	11713A	3439A02724	---	02/28/00 12	02/28/01
Equipment Type: AMPLIFIERS							
APK1	PRE-AMPLIFIER	HEWLETT PACKARD	8449B	3008A01243	1-26.5GHZ	02/28/00 12	02/28/01
Equipment Type: ANTENNAS							
NDP0	TUNED DIPOLE ANTENNA	EMCO	3121C-DB3	311	140-400MHZ	11/29/00 12	11/29/01
NDQ0	TUNED DIPOLE ANTENNA	EMCO	3121C-DB4	311	400-1000MHZ	11/29/00 12	11/29/01
NTA0	BILOG ANTENNA	CHASE EMC LTD.	BILOG CBL611	2057	0.03-2GHZ	05/09/00 12	05/09/01
NWF0	RIDGED WAVE GUIDE	EMCO	3105	2035	1-12.4GHZ	08/28/00 12	08/28/01
Equipment Type: CONTROLLERS							
CDD2	COMPUTER	HEWLETT PACKARD	D4171A#ABA	US61654645	---		N/A
CMA0	MULTI-DEVICE CONTROLLER	EMCO	2090	9701-1213	---		N/A
Equipment Type: PRINTERS AND PLOTTERS							
HRE2	LASER JET 5P	HEWLETT PACKARD	C3150A	USHB061201	---		N/A
Equipment Type: RECEIVERS							
RACC	RF PRESELECTOR	HEWLETT PACKARD	85685A	2648A00507	20HZ-2GHZ	01/10/00 12	01/10/01
RAE5	SPECTRUM ANALYZER	HEWLETT PACKARD	8566B	2532A02136	100HZ-22GHZ	05/31/00 12	05/31/01
Equipment Type: TEST CHAMBERS (EMI)							
RM17	3M ANECHOIC CHAMBER MEETS	EMC TEST SYSTEM	3M ANECHOIC		30MHZ-18GHZ	03/21/00 12	03/21/01

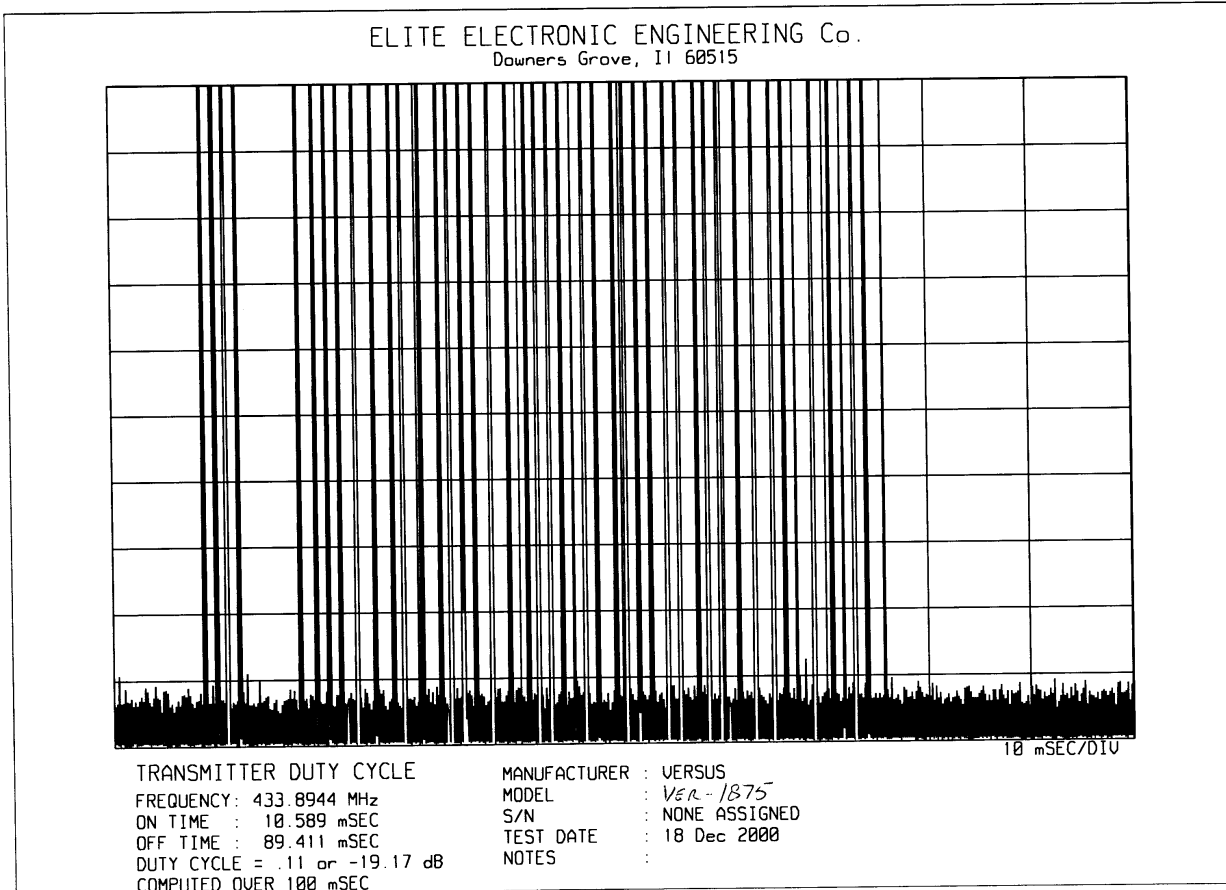
Cal. Interval: Listed in Months I/O: Initial Only N/A: Not Applicable

Note 1: For the purpose of this test, the equipment was calibrated over the specified frequency range, pulse rate, or modulation prior to the test or monitored by a calibrated instrument.

Page ____ of ____

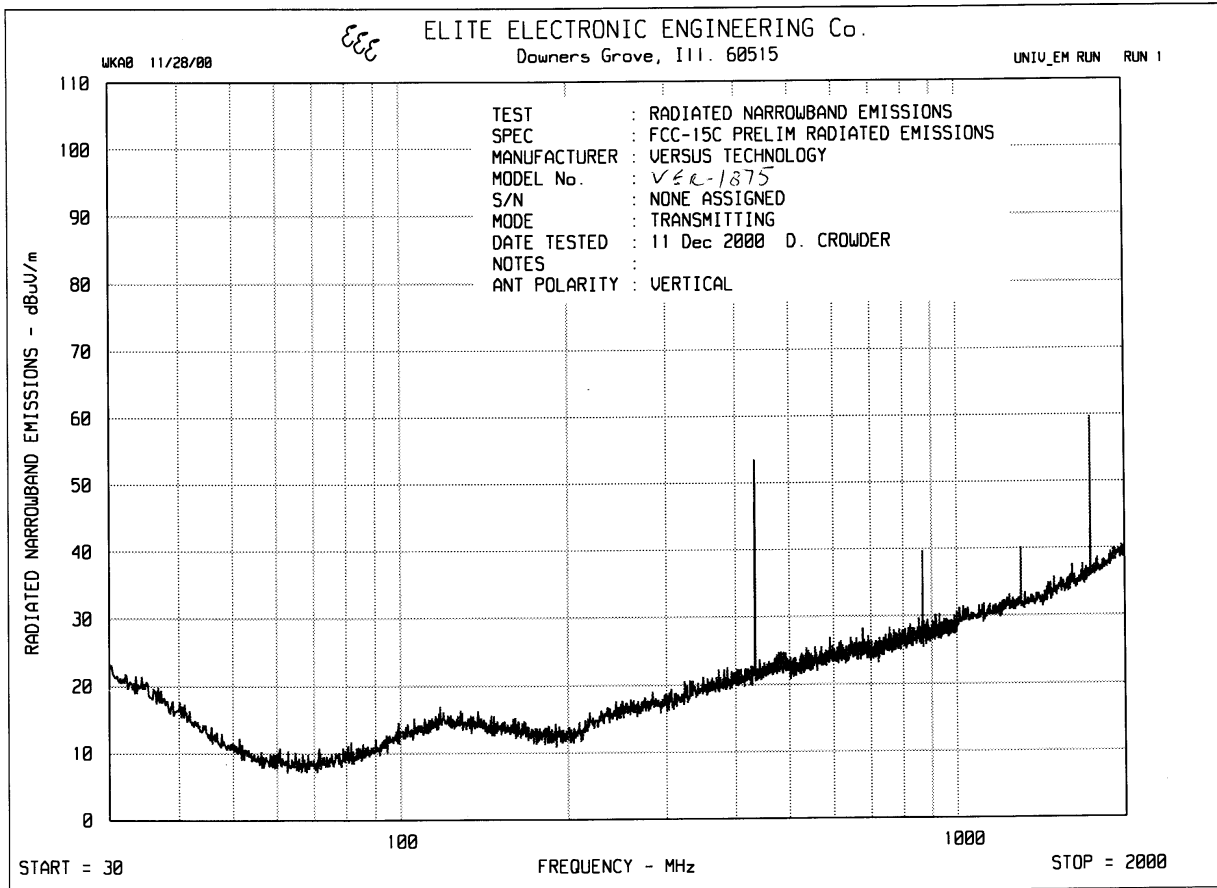
THIS REPORT SHALL NOT BE REPRODUCED, EXCEPT IN FULL, WITHOUT THE
WRITTEN APPROVAL OF VERSUS TECHNOLOGY, INC.

TRAMITTER DUTY CYCLE



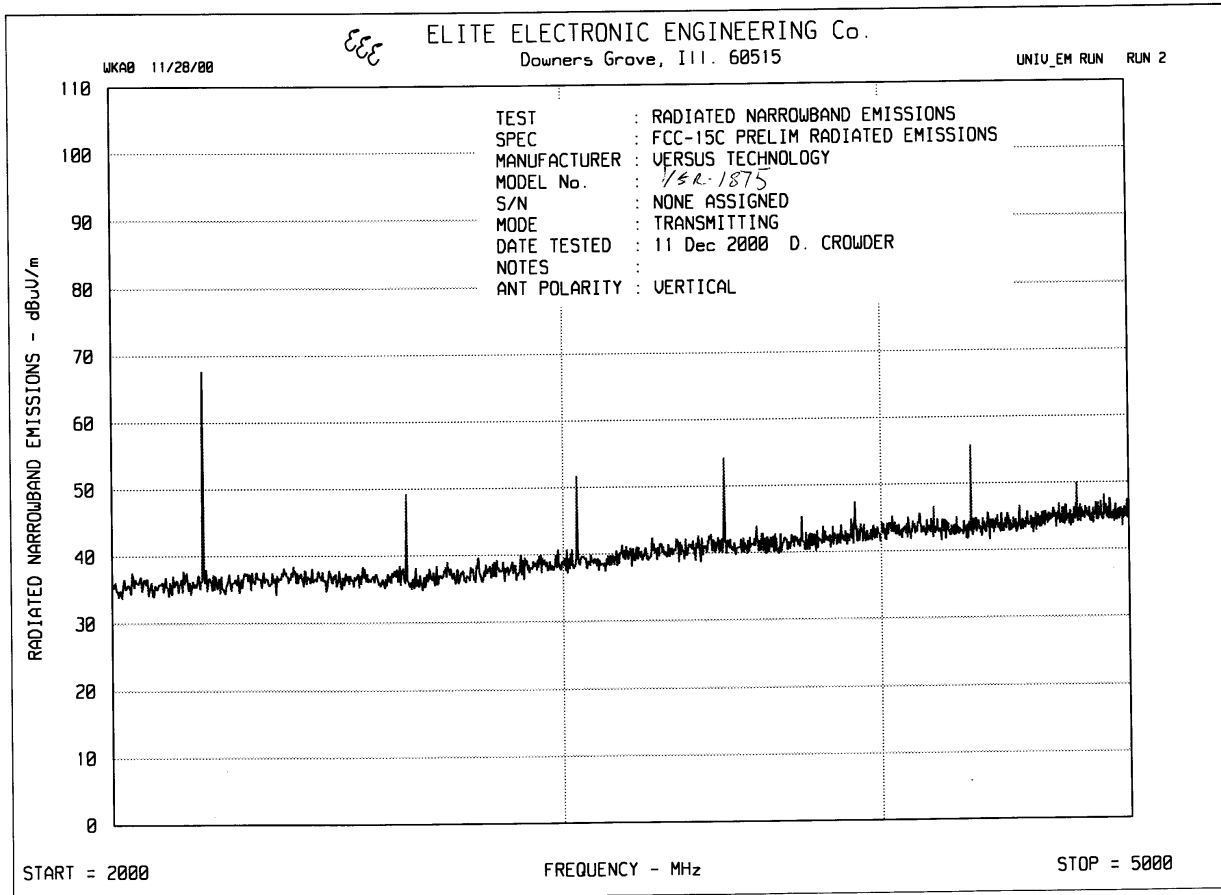
THIS REPORT SHALL NOT BE REPRODUCED, EXCEPT IN FULL, WITHOUT THE WRITTEN APPROVAL OF VERSUS TECHNOLOGY, INC.

RADIATED NARROWBAND EMISSIONS



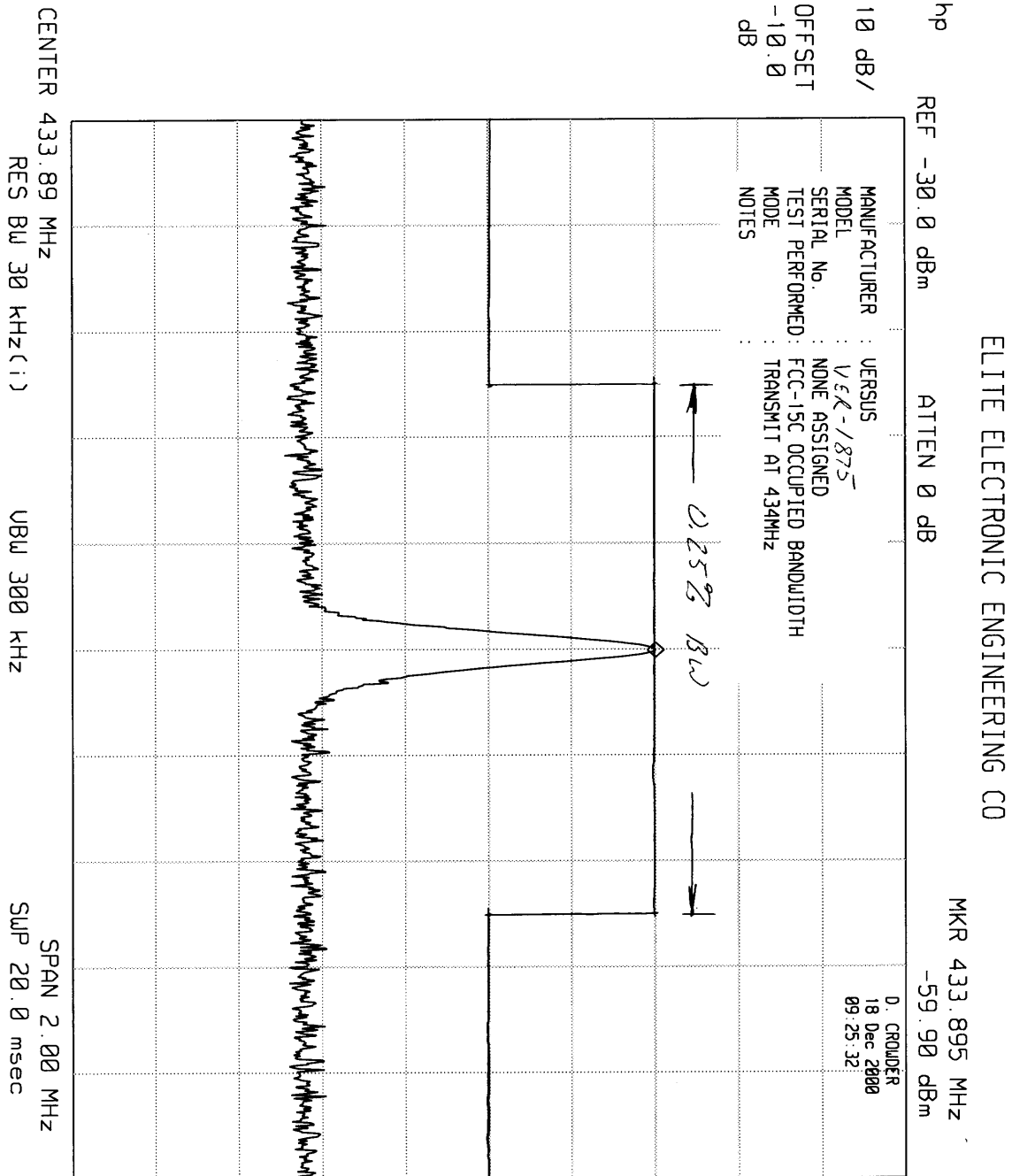
THIS REPORT SHALL NOT BE REPRODUCED, EXCEPT IN FULL, WITHOUT THE
WRITTEN APPROVAL OF VERSUS TECHNOLOGY, INC.

RADIATED NARROWBAND EMISSIONS



THIS REPORT SHALL NOT BE REPRODUCED, EXCEPT IN FULL, WITHOUT THE
WRITTEN APPROVAL OF VERSUS TECHNOLOGY, INC.

OCCUPIED BANDWIDTH



ETA 23302

THIS REPORT SHALL NOT BE REPRODUCED, EXCEPT IN FULL, WITHOUT THE WRITTEN APPROVAL OF VERSUS TECHNOLOGY, INC.

EMMISTIONS DATA AT 3 METERS

ETR No. 23302
DATA PAGE

SPECIFICATION : FCC PART 15C (REV OCT 1, 94) TRANSMITTER OPEN FIELD DATA
MANUFACTURER : VERSUS
MODEL : VER-1875
S/N : NONE ASSIGNED
TEST DATE : 18 Dec 2000
NOTES :
TEST ANTENNA : CHASE BI-LOG & DRWG ANTENNAS
(PERIODIC RATES EXCEEDED)

FREQUENCY	ANT	MTR	CBL	ANT	DUTY	TOTAL	TOTAL	LIMIT	NOTES
MHz	POL	RDG	FAC	FAC	CYCLE	dBuV/m	uV/m	uV/m	
		dBuV	dB	dB	dB	@3m	@3m	@3m	
433.90	H	55.1	2.3	16.8	-19.2	55.0	562.1	4398.3	
433.90	V	49.1	2.3	16.8	-19.2	49.0	281.7	4398.3	
867.80	H	28.7	3.2	21.7	-19.2	34.4	52.7	439.8	
867.80	V	17.2	3.2	21.7	-19.2	22.9	14.0	439.8	
1301.70	H	29.2	4.2	25.0	-19.2	39.2	91.1	500.0	*
1301.70	V	22.3	4.2	25.0	-19.2	32.3	41.2	500.0	*
1735.60	H	40.4	5.1	26.6	-19.2	52.9	441.7	500.0	
1735.60	V	30.2	5.1	26.6	-19.2	42.7	136.5	500.0	
2169.50	H	30.4	6.0	28.1	-19.2	45.3	183.9	500.0	
2169.50	V	33.4	6.0	28.1	-19.2	48.3	259.8	500.0	
2603.40	H	9.0	6.8	29.2	-19.2	25.8	19.5	500.0	
2603.40	V	10.0	6.8	29.2	-19.2	26.8	21.9	500.0	
3037.30	H	12.0	7.6	30.5	-19.2	30.9	34.9	500.0	
3037.30	V	11.1	7.6	30.5	-19.2	30.0	31.5	500.0	
3478.20	H	12.8	8.5	31.6	-19.2	33.8	48.9	500.0	
3478.20	V	12.8	8.5	31.6	-19.2	33.8	48.9	500.0	
3905.10	H	9.5	9.5	32.7	-19.2	32.5	42.0	500.0	*
3905.10	V	9.0	9.5	32.7	-19.2	32.0	39.6	500.0	*
4339.00	H	8.7	10.4	32.8	-19.2	32.8	43.4	500.0	*
4339.00	V	8.8	10.4	32.8	-19.2	32.9	43.9	500.0	*

* DENOTES A FREQUENCY CONFLICT WITH RESTRICTED BANDS

checked by: _____
D. CROWDER

**THIS REPORT SHALL NOT BE REPRODUCED, EXCEPT IN FULL, WITHOUT THE
WRITTEN APPROVAL OF VERSUS TECHNOLOGY, INC.**