

Caséta Wireless quick-start guide

In-wall dimmer

Welcome—and thank you for purchasing a Caséta Wireless in-wall dimmer. In order to control your lights from an app or remote, you'll need to replace an existing switch with a Caséta Wireless in-wall dimmer.

Before you install the dimmer, please watch the installation video at www.casetawireless.com/support
We hope you enjoy the convenience of Caséta Wireless!

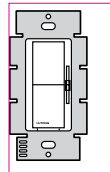
Double your warranty

Love Caséta Wireless dimmers? Have ideas for making them better? Tell us what you think and we'll extend your warranty by 1 year. www.casetawireless.com/register

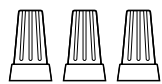


Contents supplied

In-wall dimmer (DS-6WCL)



Wire connectors (3)

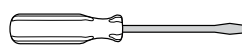


Screws (2)

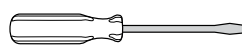


Tools you'll need

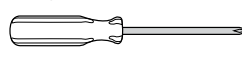
Flat-head screwdriver



Pliers



Phillips-head screwdriver



P/N 0302038 REV A

Works with energy efficient dimmable light bulbs:



LED—up to 150 W



CFL—up to 150 W



Halogen—up to 600 W



Incandescent—up to 600 W

NOTE: You can mix and match dimmable LED and CFLs, as well as halogen and incandescent light bulbs, with Caséta Wireless dimmers.

Dimmable LED and CFL light bulbs vary in their dimming performance. If you're using these bulbs and they flicker or turn off, please visit www.casetawireless.com/lowend for information on adjusting the dimmer for best bulb performance.

For a complete list of compatible dimmable LEDs and CFLs, please visit www.casetawireless.com/bulblast

Compatible light bulbs include:

Cree®
BA19-08027OMF-12DE26-1U100
CR6-575L

EcoSmart®
ECS BR30 W27 FL 120
ECS 20 WW FL 50WE 120

Feit®
A19/OM/LED

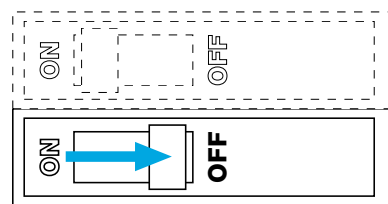
Philips®
9290002295

Sylvania®
LED12A19/DIM/O/827
LED21PAR38/DIM/P/930/FL30

Installing your dimmer

Installation for lights with one wall switch (single pole)

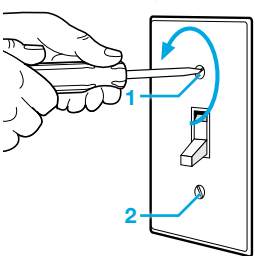
1 Turn power off at circuit breaker!



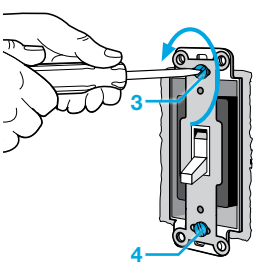
WARNING: SHOCK HAZARD
May result in serious injury or death. Turn off power at circuit breaker or fuse before installing.

2 Remove existing switch from wall

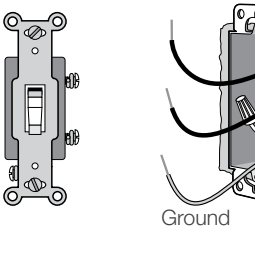
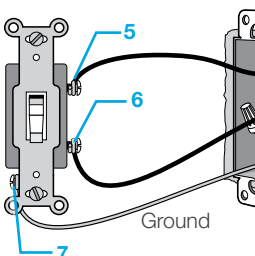
Remove the wallplate from switch.



Remove the switch and pull it away from the wall.

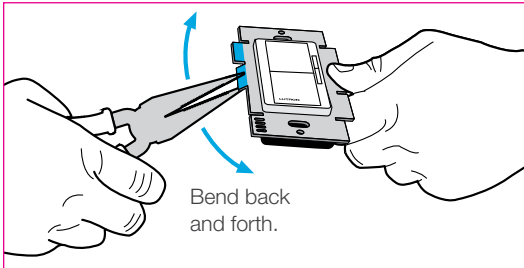


Disconnect all three wires* from the switch.

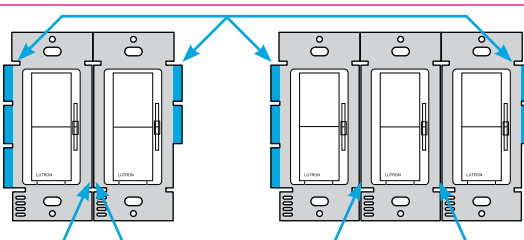


*If your switch has more than 3 wires attached, see "Installing Caséta Wireless in a 3-way switch application" video at www.casetawireless.com/3way

3 Remove side sections (if necessary)



Do not remove outside side sections on dimmers at the end of gang.



Each dimmer has inside side sections removed.

Dimmer at middle has all side sections removed.

Important note:

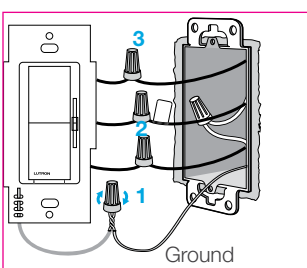
Removing side sections reduces the dimmer's maximum wattage rating. See the chart below for maximum wattage information.

Maximum* wattage derating chart (120 V~ 50/60 Hz)

Side sections removed	None	1 side	2 sides
LED & CFL	150 W	150 W	150 W
or*			
Incandescent & Halogen	600 W	500 W	400 W

*For maximum wattage information when mixing light bulb types see www.casetawireless.com/ganging

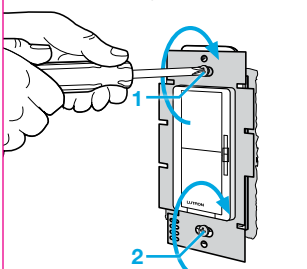
4 Connect the dimmer



- 1 Connect the bare copper (or green) "ground" wire from the wallbox to the green wire on the dimmer using a wire connector.
- 2 Connect either of the remaining wires from the wallbox to either of the remaining wires on the dimmer using a second wire connector.
- 3 Connect the remaining wire from the wall to the remaining wire on the dimmer using a third wire connector.

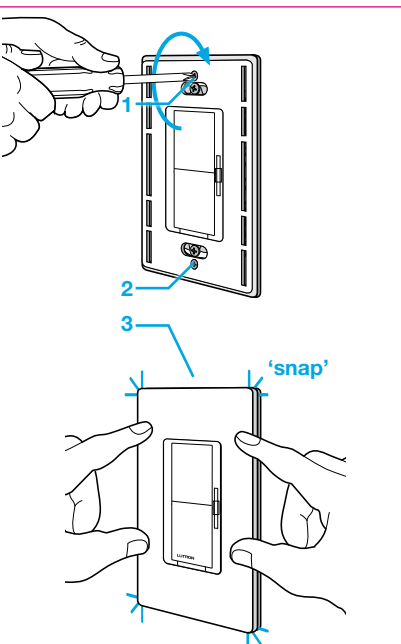
5 Mount the dimmer

Use the screws provided.



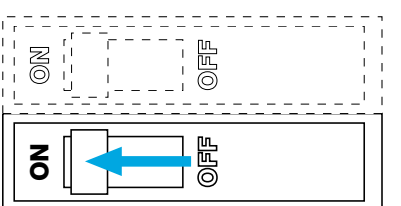
6 Attach the wallplate

Attach the adapter to the dimmer using the screws provided and snap on the wallplate.



(If you installed the dimmer next to other dimmers or switches, you'll need to install a wallplate with the correct size/number of openings to accommodate all the devices.)

7 Turn power on at circuit breaker



Using your Caséta Wireless kit

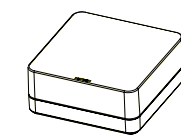
(sold separately)

With a smartphone or tablet (Bridge required, sold separately)

The Caséta™ Wireless dimmer can be controlled from a smartphone when used with the Lutron Smart Bridge.

If you are using the dimmer and remote control with the Lutron Smart Bridge follow the instructions below.

Note: If you are using the dimmer and remote control with another manufacturer's bridge, please refer to that manufacturer's instructions for set-up.



Lutron Smart Bridge



Lutron app

1 Download the Lutron app



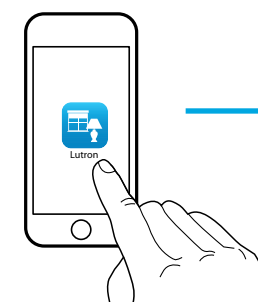
Search for "Lutron Caseta"



Lutron

www.casetawireless.com/LutronApp

2 Launch the Lutron app

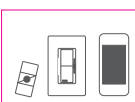


The Lutron app will walk you through setting up your devices.

3 Use the Lutron app to complete ALL remaining steps



Add devices
• Pico remotes
• Dimmers
• Shades



Control three ways



Schedule your lights

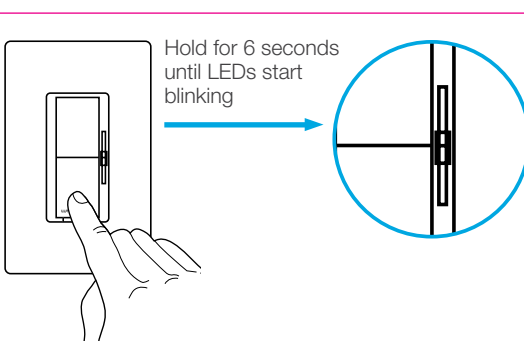


Connect while away

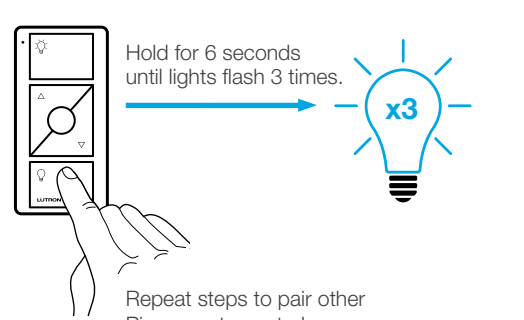
Without a smartphone or tablet (Bridge not required)

Pairing the dimmer and Pico remote control

1 Press and hold "off" button on dimmer



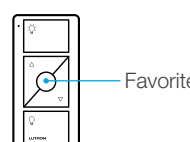
2 Press and hold "off" button on remote



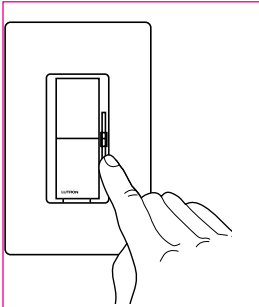
For advanced features, tips for using Caséta™ Wireless dimmers with CFLs and LEDs, the complete Caséta™ Wireless product line, and more, please visit www.casetawireless.com/features

Changing the favorite light level on the Pico remote control (sold separately)

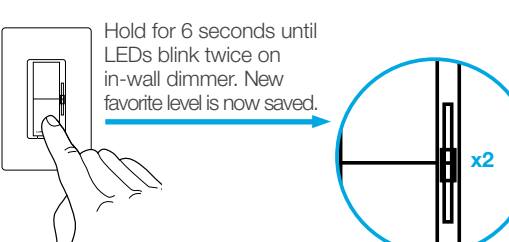
You can use the round "favorite" button on the Pico remote control to recall a favorite light level. We've set it to 50%, but you can change it to any level you like.



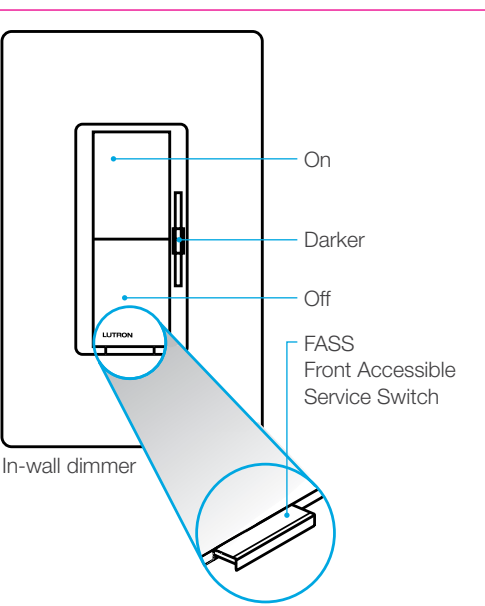
3 Set desired light level on dimmer



4 Press and hold "favorite" button on remote

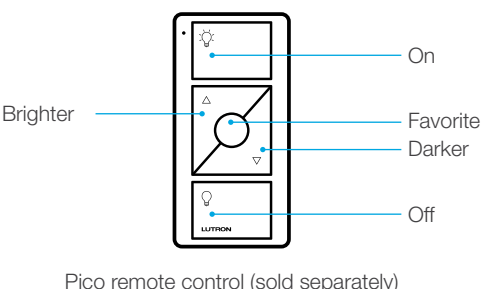


Using your controls



Replacing light bulbs using FASS

Pull the FASS switch out on the in-wall dimmer to remove power at the light socket.



Important notes:

1. For indoor use only.
2. Operate between 32 °F (0 °C) and 104 °F (40 °C).

Device Ratings

In-wall dimmer
DS-6WCL
120 V~ 50/60 Hz

CAUTION

Use only with permanently installed fixtures with dimmable LED, dimmable CFL, halogen, or incandescent lamps. To avoid overheating and possible damage to other equipment, do not use to control receptacles, motor-driven appliances, or transformer-supplied appliances.

Codes

Install in accordance with all national and local electrical codes.

Grounding

When no "grounding means" exist in wallbox, the National Electrical Code (NEC) allows a control to be installed as a replacement if 1) a nonmetallic, noncombustible faceplate is used with nonmetallic attachment screws or 2) the circuit is protected by a ground fault circuit interrupter (GFCI). When installing a control according to these methods, cap or remove green wire before screwing control into wallbox.

FCC/IC Information

This device complies with part 15 of the FCC Rules and Industry Canada license-exempt RSS standard(s). Operation is subject to the following two conditions: (1) This device may not cause interference, and (2) this device must accept any interference, including interference that may cause undesired operation. Modifications not expressly approved by Lutron Electronics Co., Inc. could void the user's authority to operate this equipment. Note: This equipment has been tested and found to comply with the limits for a Class B digital device, pursuant to part 15 of the FCC Rules. These limits are designed to provide reasonable protection against harmful interference in a residential installation. This equipment generates, uses, and can radiate radio frequency energy and, if not installed and used in accordance with the instructions, may cause harmful interference to radio communications. However, there is no guarantee that interference will not occur in a particular installation. If this equipment does cause harmful interference to radio or television reception, which can be determined by turning the equipment off and on, the user is encouraged to try to correct the interference by one or more of the following measures:
—Reorient or relocate the receiving antenna.
—Increase the separation between the equipment and receiver.
—Connect the equipment into an outlet on a circuit different from that to which the receiver is connected.
—Consult the dealer or an experienced radio/TV technician for help.

Informations FCC/IC

Cet appareil est conforme à la partie 15 des règles de la FCC et des standards CNR exempt de licence d'Industrie Canada. Le fonctionnement est sous réserve des deux conditions suivantes : (1) Cet appareil ne doit pas provoquer d'interférence. (2) Cet appareil doit accepter toutes les interférences, y compris les interférences qui pourraient provoquer un fonctionnement indésirable. Les modifications qui n'ont pas été expressément approuvées par Lutron Electronics Co., Inc. peuvent annuler le pouvoir de l'utilisateur d'utiliser cet équipement. REMARQUE : Cet équipement a été testé et est conforme aux limites d'un appareil numérique de Classe B en vertu de la partie 15 des règles de la FCC. Ces limites sont conçues pour fournir une protection raisonnable face aux interférences nuisibles dans une installation résidentielle. Cet équipement génère, utilise et peut émettre une énergie de fréquence radio, ce qui peut être déterminé en allumant et en éteignant l'équipement, il est recommandé que l'utilisateur tente de corriger ces interférences en utilisant une ou plusieurs des mesures suivantes :
- Réorientez ou repositionnez l'antenne réceptrice
- Augmentez la séparation entre l'équipement et le récepteur
- Connectez l'équipement à une prise électrique se trouvant sur un circuit différent de celui où le récepteur est connecté
- Demandez l'aide du vendeur ou d'un technicien radio/TV expérimenté
Cet appareil numérique de classe B est conforme à la norme ICES-003 du Canada.

Warranty

For warranty information, please visit www.casetawireless.com/warranty

Troubleshooting

Symptoms	Probable cause and action
Light does not turn on or in-wall dimmer LEDs do not light up.	<ul style="list-style-type: none">• Light bulb(s) burned out.• Breaker is OFF or tripped.• Light not properly installed.• Wiring error.• FASS switch on the dimmer is in the Off position.
Light does not respond to Pico remote control.	<ul style="list-style-type: none">• The dimmer failed to pair with Pico remote control; see <i>Pairing the dimmer and Pico remote control</i>.• The dimmer is already at the light level the Pico remote control is sending.• The Pico remote control is outside the 30 ft (9 m) operating range.• The Pico remote control battery is low.• The Pico remote control battery is installed incorrectly.
<ul style="list-style-type: none">• Bulbs turn off while being dimmed.• Bulbs turn on at high light level but do not turn on at a low light level.• Bulbs flicker or flash when dimmed to a low light level.	<ul style="list-style-type: none">Verify bulbs are marked dimmable and visit www.casetawireless.com/lowend for information on adjusting the dimmer for best bulb performance.

Go to www.casetawireless.com/support for additional troubleshooting suggestions.

Lutron, the Lutron logo, FASS, Caséta, Smart Bridge and Pico are trademarks or registered trademarks of Lutron Electronics Co., Inc. in the US and/or other countries. Apple is a trademark of Apple Inc., registered in the U.S. and other countries. App Store is a service mark of Apple Inc. All other product names, logos, and brands are property of their respective owners.
©2021 Lutron Electronics Co., Inc. P/N 0302038 REV A