

EXHIBIT 9**INTERNAL PHOTOGRAPHS**

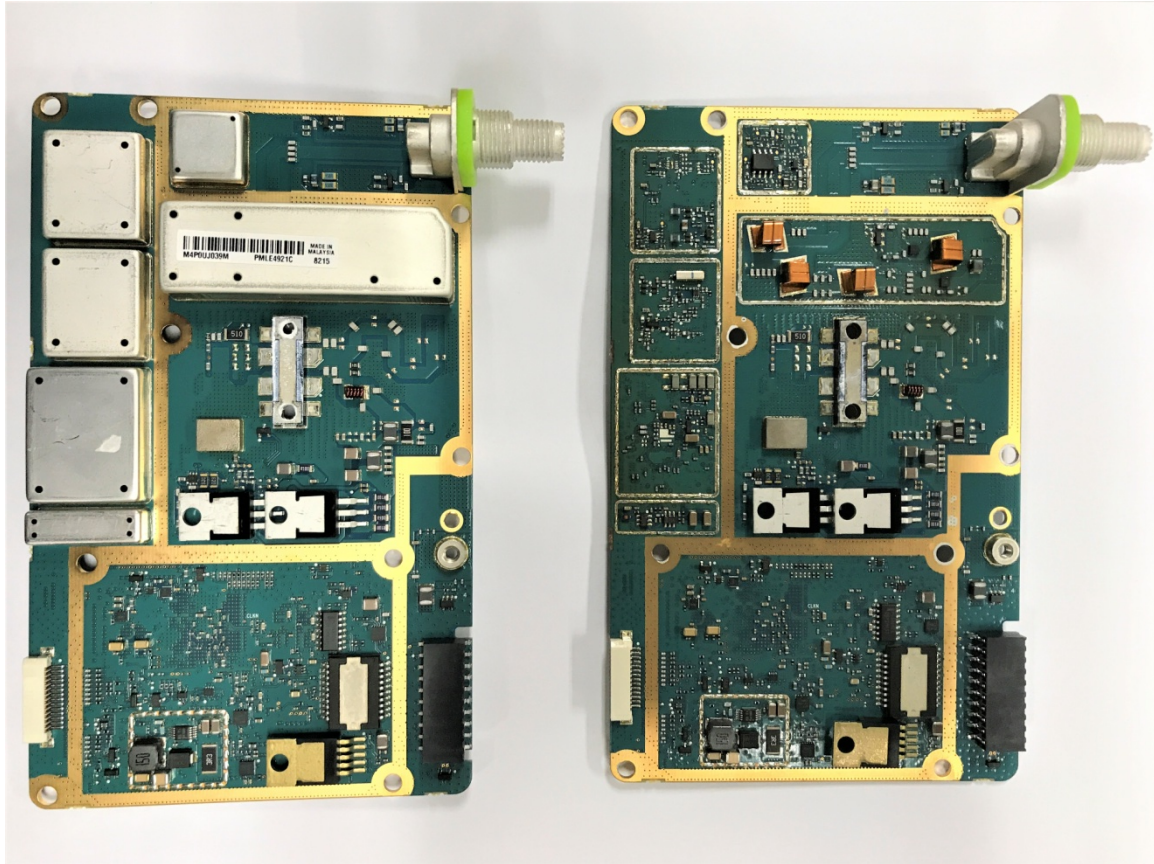
(Pursuant to FCC Part 2.1033(b)(7), 2.1033(c)(12) and RSP 100 Sec 8.3)

The following photographs are attached.

Exhibit

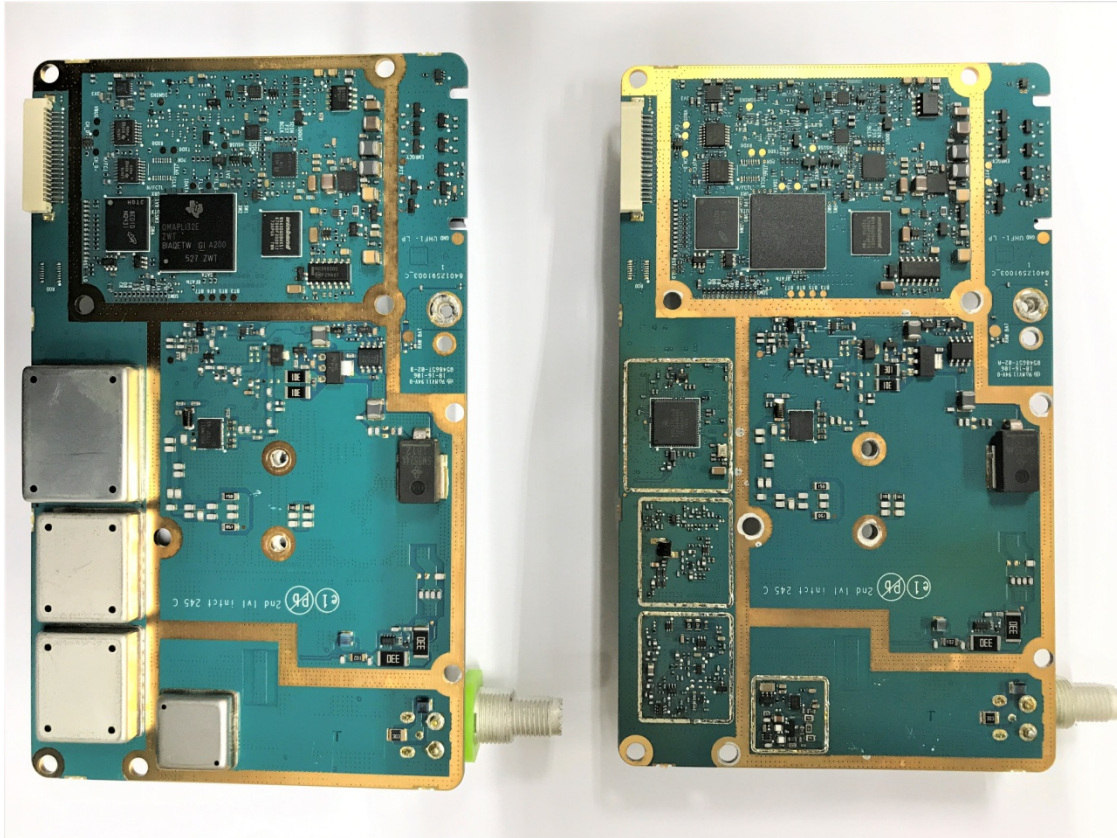
- | | | |
|----|---|----|
| 1. | RF board with and without shields (Top) | 9A |
| 2. | RF board with and without shields (Bottom) | 9B |
| 3. | RF Board with Chassis and control head (Top) | 9C |
| 4. | RF Board with Chassis and control head (Bottom) | 9D |
| 5. | GOB board (Top) | 9E |
| 6. | GOB Board with shield (Bottom) | 9F |
| 7. | GOB Board without shields (Bottom) | 9G |
| 8. | Exploded View | 9H |

Exhibits 9A



RF board with and without shields (Top)

Exhibits 9B



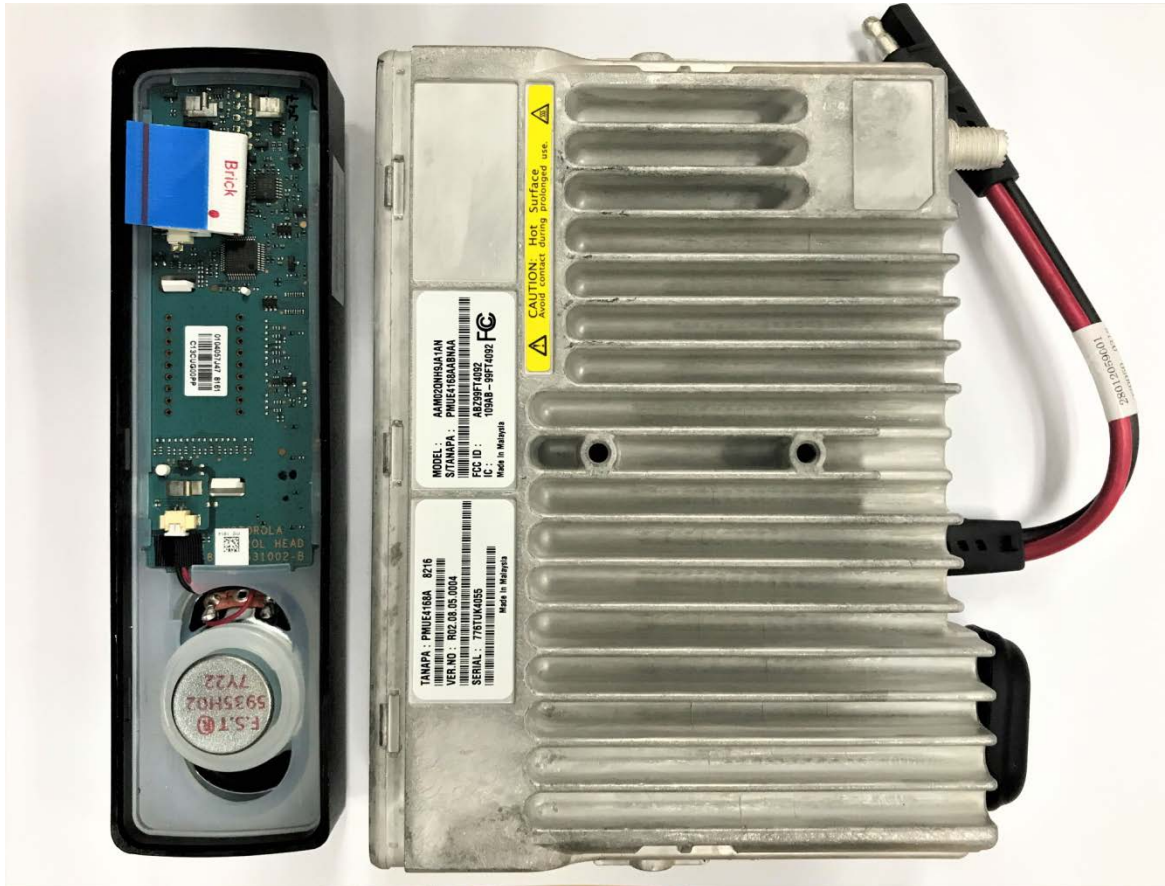
RF board with and without shields (Bottom)

Exhibits 9C



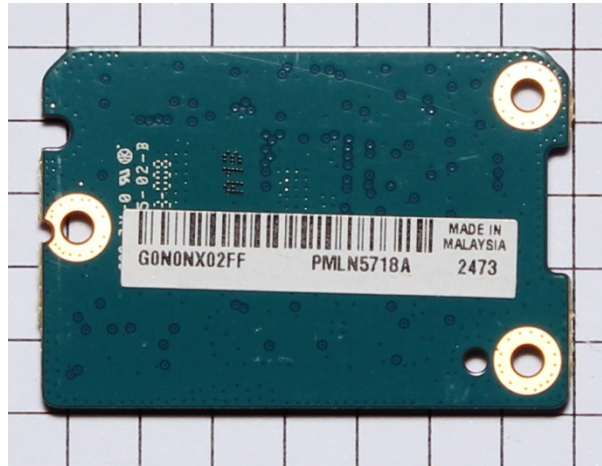
RF board with chassis and control head (Top)

Exhibits 9D



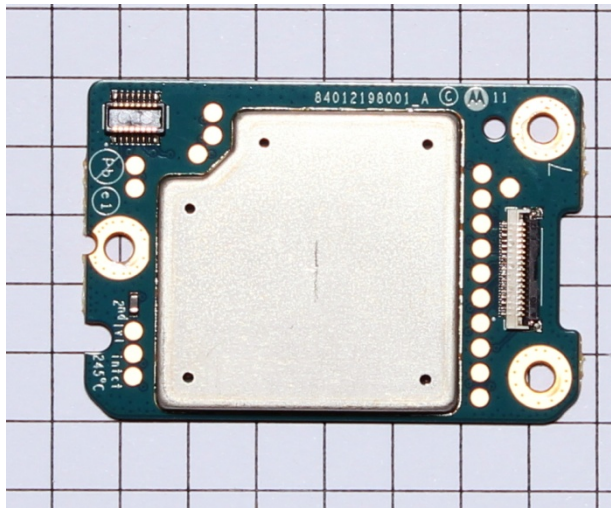
RF board with chassis and control head (Bottom)

Exhibits 9E



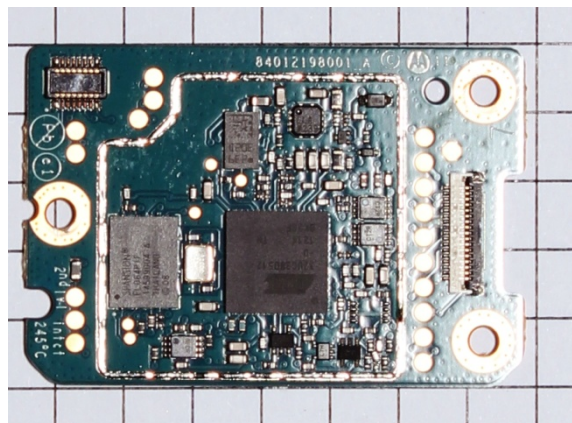
GOB board (Top)

Exhibits 9F



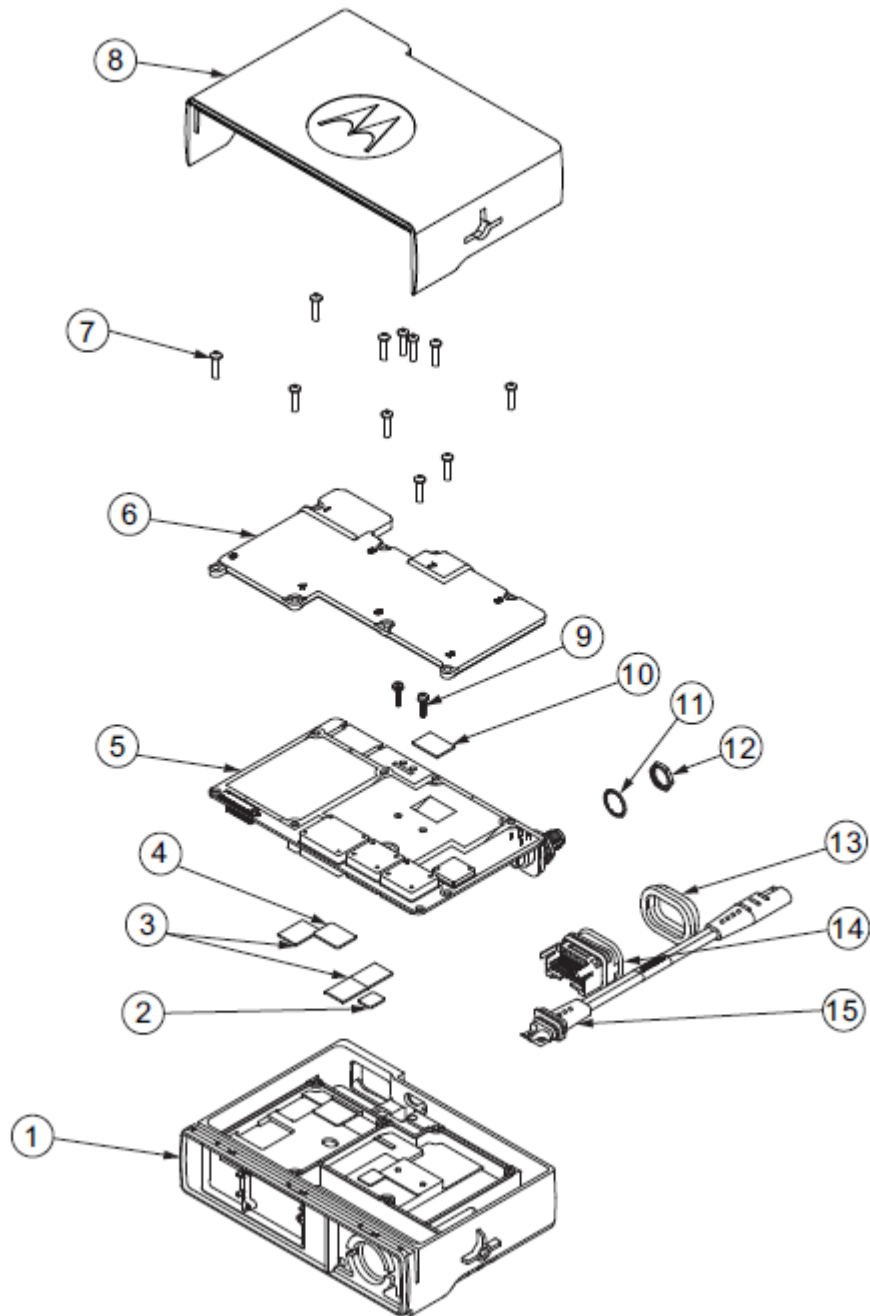
GOB board with shield (Bottom)

Exhibits 9G



GOB board without shield (Bottom)

Exhibits 9H



Exploded View