

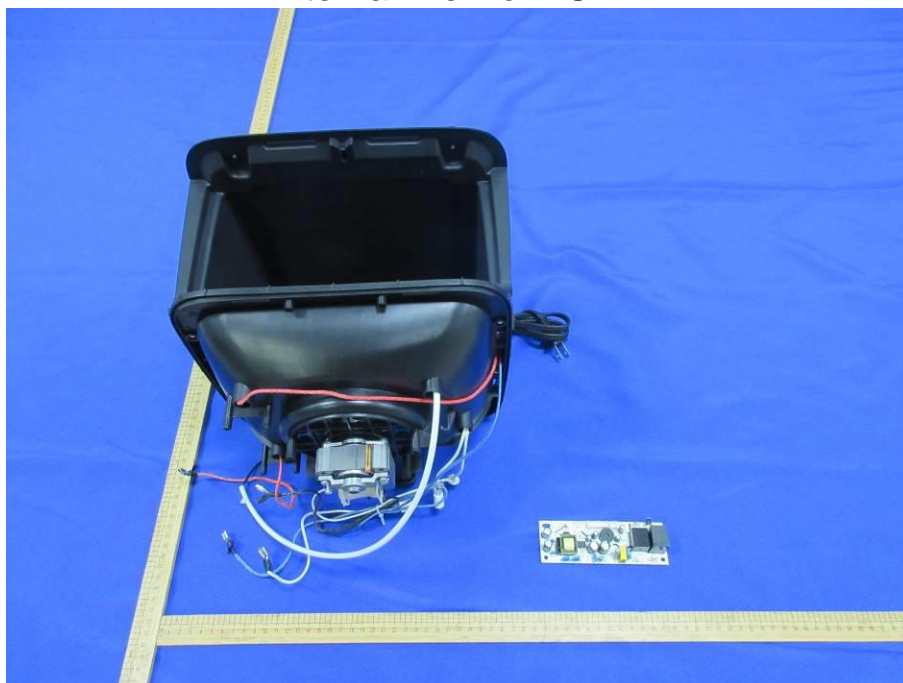
Appendix II

Internal Photographs

Open View of EUT



Internal View of EUT-1

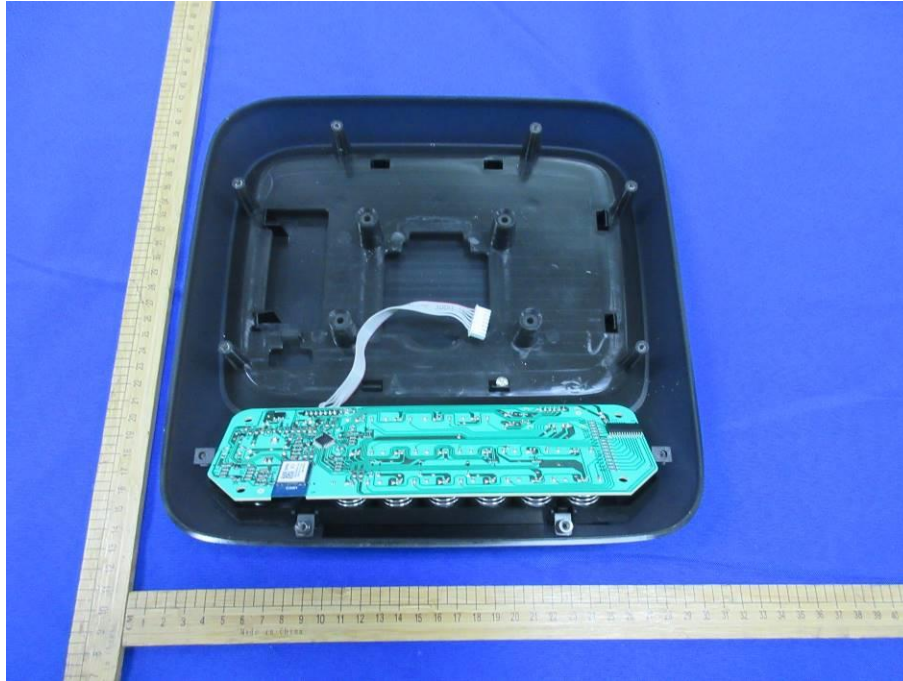


The image shows a custom electronic PCB assembly. Key components include:

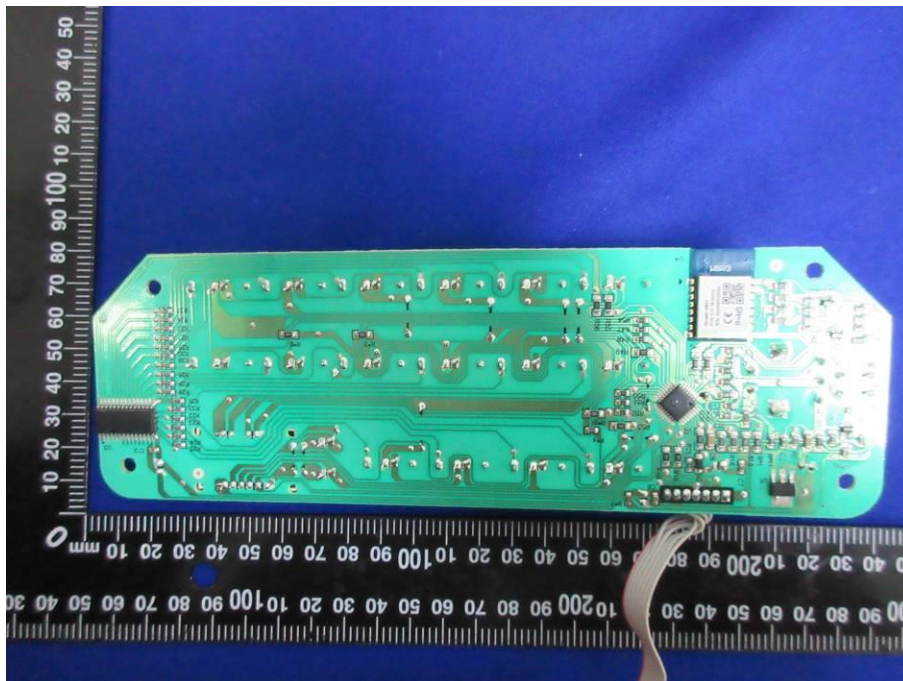
- Transformer:** A large black toroidal transformer on the left.
- Capacitors:** Several electrolytic capacitors of various sizes and colors (black, blue, yellow).
- Inductor:** A yellow toroidal inductor in the center.
- ICs:** Several integrated circuits, including a large black chip on the left and a smaller one on the right.
- Resistors:** Various resistors of different colors and values.
- Connectors:** A white multi-pin connector at the bottom.
- Labels:** Various component labels like EC104, EC106, EC105, EC107, EC108, EC109, EC110, EC111, EC112, EC113, EC114, EC115, EC116, EC117, EC118, EC119, EC120, EC121, EC122, EC123, EC124, EC125, EC126, EC127, EC128, EC129, EC130, EC131, EC132, EC133, EC134, EC135, EC136, EC137, EC138, EC139, EC140, EC141, EC142, EC143, EC144, EC145, EC146, EC147, EC148, EC149, EC150, EC151, EC152, EC153, EC154, EC155, EC156, EC157, EC158, EC159, EC160, EC161, EC162, EC163, EC164, EC165, EC166, EC167, EC168, EC169, EC170, EC171, EC172, EC173, EC174, EC175, EC176, EC177, EC178, EC179, EC180, EC181, EC182, EC183, EC184, EC185, EC186, EC187, EC188, EC189, EC190, EC191, EC192, EC193, EC194, EC195, EC196, EC197, EC198, EC199, EC200, EC201, EC202, EC203, EC204, EC205, EC206, EC207, EC208, EC209, EC210, EC211, EC212, EC213, EC214, EC215, EC216, EC217, EC218, EC219, EC220, EC221, EC222, EC223, EC224, EC225, EC226, EC227, EC228, EC229, EC230, EC231, EC232, EC233, EC234, EC235, EC236, EC237, EC238, EC239, EC240, EC241, EC242, EC243, EC244, EC245, EC246, EC247, EC248, EC249, EC250, EC251, EC252, EC253, EC254, EC255, EC256, EC257, EC258, EC259, EC260, EC261, EC262, EC263, EC264, EC265, EC266, EC267, EC268, EC269, EC270, EC271, EC272, EC273, EC274, EC275, EC276, EC277, EC278, EC279, EC280, EC281, EC282, EC283, EC284, EC285, EC286, EC287, EC288, EC289, EC290, EC291, EC292, EC293, EC294, EC295, EC296, EC297, EC298, EC299, EC300, EC301, EC302, EC303, EC304, EC305, EC306, EC307, EC308, EC309, EC310, EC311, EC312, EC313, EC314, EC315, EC316, EC317, EC318, EC319, EC320, EC321, EC322, EC323, EC324, EC325, EC326, EC327, EC328, EC329, EC330, EC331, EC332, EC333, EC334, EC335, EC336, EC337, EC338, EC339, EC340, EC341, EC342, EC343, EC344, EC345, EC346, EC347, EC348, EC349, EC350, EC351, EC352, EC353, EC354, EC355, EC356, EC357, EC358, EC359, EC360, EC361, EC362, EC363, EC364, EC365, EC366, EC367, EC368, EC369, EC370, EC371, EC372, EC373, EC374, EC375, EC376, EC377, EC378, EC379, EC380, EC381, EC382, EC383, EC384, EC385, EC386, EC387, EC388, EC389, EC390, EC391, EC392, EC393, EC394, EC395, EC396, EC397, EC398, EC399, EC400, EC401, EC402, EC403, EC404, EC405, EC406, EC407, EC408, EC409, EC410, EC411, EC412, EC413, EC414, EC415, EC416, EC417, EC418, EC419, EC420, EC421, EC422, EC423, EC424, EC425, EC426, EC427, EC428, EC429, EC430, EC431, EC432, EC433, EC434, EC435, EC436, EC437, EC438, EC439, EC440, EC441, EC442, EC443, EC444, EC445, EC446, EC447, EC448, EC449, EC450, EC451, EC452, EC453, EC454, EC455, EC456, EC457, EC458, EC459, EC460, EC461, EC462, EC463, EC464, EC465, EC466, EC467, EC468, EC469, EC470, EC471, EC472, EC473, EC474, EC475, EC476, EC477, EC478, EC479, EC480, EC481, EC482, EC483, EC484, EC485, EC486, EC487, EC488, EC489, EC490, EC491, EC492, EC493, EC494, EC495, EC496, EC497, EC498, EC499, EC500, EC501, EC502, EC503, EC504, EC505, EC506, EC507, EC508, EC509, EC510, EC511, EC512, EC513, EC514, EC515, EC516, EC517, EC518, EC519, EC520, EC521, EC522, EC523, EC524, EC525, EC526, EC527, EC528, EC529, EC530, EC531, EC532, EC533, EC534, EC535, EC536, EC537, EC538, EC539, EC540, EC541, EC542, EC543, EC544, EC545, EC546, EC547, EC548, EC549, EC550, EC551, EC552, EC553, EC554, EC555, EC556, EC557, EC558, EC559, EC560, EC561, EC562, EC563, EC564, EC565, EC566, EC567, EC568, EC569, EC570, EC571, EC572, EC573, EC574, EC575, EC576, EC577, EC578, EC579, EC580, EC581, EC582, EC583, EC584, EC585, EC586, EC587, EC588, EC589, EC590, EC591, EC592, EC593, EC594, EC595, EC596, EC597, EC598, EC599, EC600, EC601, EC602, EC603, EC604, EC605, EC606, EC607, EC608, EC609, EC610, EC611, EC612, EC613, EC614, EC615, EC616, EC617, EC618, EC619, EC620, EC621, EC622, EC623, EC624, EC625, EC626, EC627, EC628, EC629, EC630, EC631, EC632, EC633, EC634, EC635, EC636, EC637, EC638, EC639, EC640, EC641, EC642, EC643, EC644, EC645, EC646, EC647, EC648, EC649, EC650, EC651, EC652, EC653, EC654, EC655, EC656, EC657, EC658, EC659, EC660, EC661, EC662, EC663, EC664, EC665, EC666, EC667, EC668, EC669, EC670, EC671, EC672, EC673, EC674, EC675, EC676, EC677, EC678, EC679, EC680, EC681, EC682, EC683, EC684, EC685, EC686, EC687, EC688, EC689, EC690, EC691, EC692, EC693, EC694, EC695, EC696, EC697, EC698, EC699, EC700, EC701, EC702, EC703, EC704, EC705, EC706, EC707, EC708, EC709, EC710, EC711, EC712, EC713, EC714, EC715, EC716, EC717, EC718, EC719, EC720, EC721, EC722, EC723, EC724, EC725, EC726, EC727, EC728, EC729, EC730, EC731, EC732, EC733, EC734, EC735, EC736, EC737, EC738, EC739, EC740, EC741, EC742, EC743, EC744, EC745, EC746, EC747, EC748, EC749, EC750, EC751, EC752, EC753, EC754, EC755, EC756, EC757, EC758, EC759, EC760, EC761, EC762, EC763, EC764, EC765, EC766, EC767, EC768, EC769, EC770, EC771, EC772, EC773, EC774, EC775, EC776, EC777, EC778, EC779, EC780, EC781, EC782, EC783, EC784, EC785, EC786, EC787, EC788, EC789, EC790, EC791, EC792, EC793, EC794, EC795, EC796, EC797, EC798, EC799, EC800, EC801, EC802, EC803, EC804, EC805, EC806, EC807, EC808, EC809, EC810, EC811, EC812, EC813, EC814, EC815, EC816, EC817, EC818, EC819, EC820, EC821, EC822, EC823, EC824, EC825, EC826, EC827, EC828, EC829, EC830, EC831, EC832, EC833, EC834, EC835, EC836, EC837, EC838, EC839, EC840, EC841, EC842, EC843, EC844, EC845, EC846, EC847, EC848, EC849, EC850, EC851, EC852, EC853, EC854, EC855, EC856, EC857, EC858, EC859, EC860, EC861, EC862, EC863, EC864, EC865, EC866, EC867, EC868, EC869, EC870, EC871, EC872, EC

A photograph of a green printed circuit board (PCB) populated with numerous electronic components. The board is rectangular with four mounting holes at the corners. It is densely packed with components, including resistors (labeled R1 through R19), capacitors (labeled C1 through C10), integrated circuits (labeled U1, U2, U3, U4, U5, U6, U7, U8, U9, U10, U11, U12, U13, U14, U15, U16, U17, U18, U19, U20, U21, U22, U23, U24, U25, U26, U27, U28, U29, U30, U31, U32, U33, U34, U35, U36, U37, U38, U39, U40, U41, U42, U43, U44, U45, U46, U47, U48, U49, U50, U51, U52, U53, U54, U55, U56, U57, U58, U59, U60, U61, U62, U63, U64, U65, U66, U67, U68, U69, U70, U71, U72, U73, U74, U75, U76, U77, U78, U79, U80, U81, U82, U83, U84, U85, U86, U87, U88, U89, U90, U91, U92, U93, U94, U95, U96, U97, U98, U99, U100), and diodes (labeled D1 through D10). The components are soldered onto the board. A ruler is visible at the top and bottom of the image, providing a scale for the board's dimensions. The background is a solid blue color.

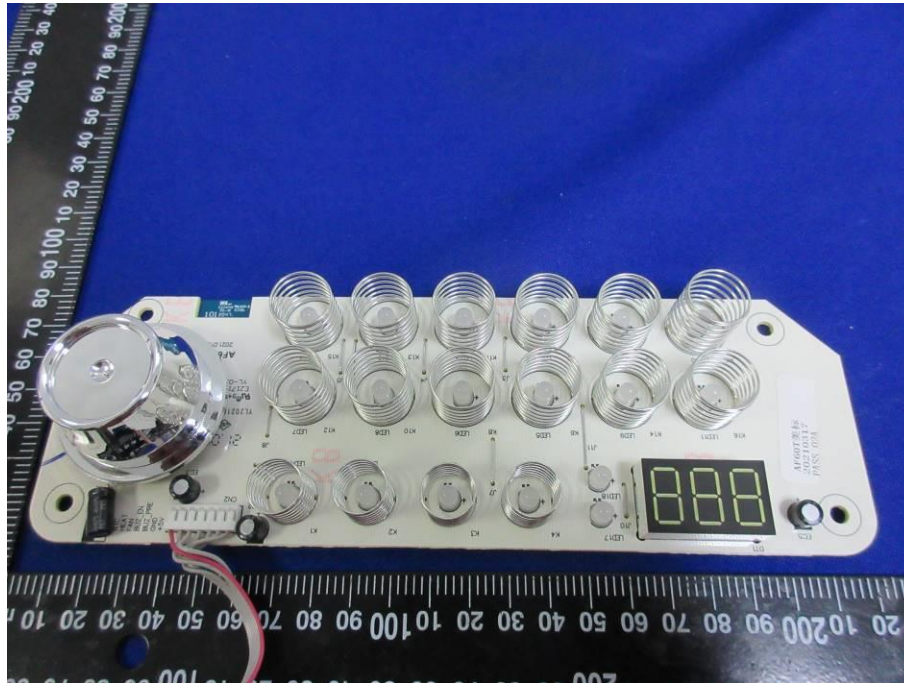
Internal View of EUT-4



Internal View of EUT-5



Internal View of EUT-6



Antenna and RF Module Location-WLAN

