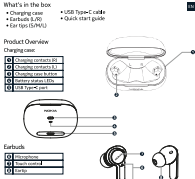


Nokia Clarity Earbuds
TWS-821W
Quick Start Guide



NOKIA

Product and safety information

Read the safety information that may vary depending on the model of your device and application. Sound track instructions do not replace CE marking. These devices with Bluetooth wireless technology communicate using radio waves. They do not need to be in direct line-of-sight. Bluetooth devices may, however, be within 10 meters (33 feet) of each other, although the connection may be subject to interference from obstructions such as walls or from other electronic devices.

Frequency Band: 2.402 GHz - 2.483 GHz

Maximum Radio Frequency Power: +4 dBm

For your safety

Warning: Read these important guidelines. Not following them may be dangerous or injure you. Read the instructions for further info. Read the controls and use guide.

Switch off in restricted areas: Switch the device off when Bluetooth headset use is not needed or when it may cause interference or damage, for example, in aircraft, in hospitals, or near medical equipment, fuel, chemicals, or blasting areas. Obey instructions in restricted areas.

Interference: Wireless devices may be susceptible to interference, which could affect performance. Batteries, chargers, and other accessories may also be susceptible to interference.

Protect your hearing: To prevent possible hearing damage, do not listen at high volume levels for long periods.

Warning: When you use the headset, your ability to hear outside sounds may be affected. Do not use the headset where it can endanger your safety. The surface of this product is not flammable.

Small children: Your device and its accessories are not toys. They may contain small parts. Keep them out of the reach of small children.

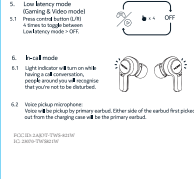
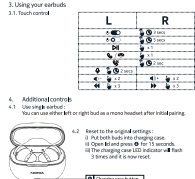
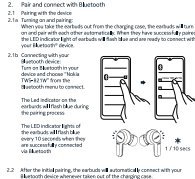
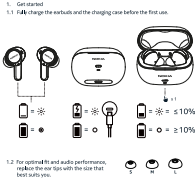
Take care of your device

Read the safety information that may vary depending on the model of your device and application. Sound track instructions do not replace CE marking. These devices with Bluetooth wireless technology communicate using radio waves. They do not need to be in direct line-of-sight. Bluetooth devices may, however, be within 10 meters (33 feet) of each other, although the connection may be subject to interference from obstructions such as walls or from other electronic devices.

Recycle: Return your used electronic products, batteries, and packaging materials to designated recycling points. This way you can help protect the environment and prevent the recycling of materials. Chemical and electronic products contain a lot of hazardous materials. Do not throw them away with household waste. They should be recycled.

Crossed-out wheeled bin symbol: The crossed-out wheeled bin symbol on your product, battery, batteries, or packaging reminds you not to throw these electronic products and batteries into the general waste.

Do not dispose of these products as unsorted municipal waste: Take them for recycling. For info on your nearest recycling point, check with your local waste authority.



Product and safety information

Read the safety information that may vary depending on the model of your device and application. Sound track instructions do not replace CE marking. These devices with Bluetooth wireless technology communicate using radio waves. They do not need to be in direct line-of-sight. Bluetooth devices may, however, be within 10 meters (33 feet) of each other, although the connection may be subject to interference from obstructions such as walls or from other electronic devices.

Frequency Band: 2.402 GHz - 2.483 GHz

Maximum Radio Frequency Power: +4 dBm

For your safety

Warning: Read these important guidelines. Not following them may be dangerous or injure you. Read the instructions for further info. Read the controls and use guide.

Switch off in restricted areas: Switch the device off when Bluetooth headset use is not needed or when it may cause interference or damage, for example, in aircraft, in hospitals, or near medical equipment, fuel, chemicals, or blasting areas. Obey instructions in restricted areas.

Interference: Wireless devices may be susceptible to interference, which could affect performance. Batteries, chargers, and other accessories may also be susceptible to interference.

Protect your hearing: To prevent possible hearing damage, do not listen at high volume levels for long periods.

Warning: When you use the headset, your ability to hear outside sounds may be affected. Do not use the headset where it can endanger your safety. The surface of this product is not flammable.

Small children: Your device and its accessories are not toys. They may contain small parts. Keep them out of the reach of small children.

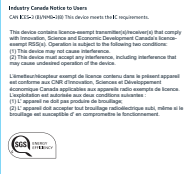
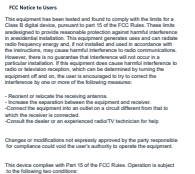
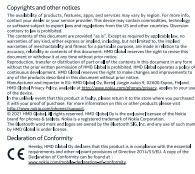
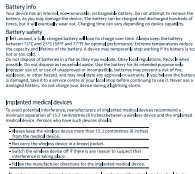
Take care of your device

Read the safety information that may vary depending on the model of your device and application. Sound track instructions do not replace CE marking. These devices with Bluetooth wireless technology communicate using radio waves. They do not need to be in direct line-of-sight. Bluetooth devices may, however, be within 10 meters (33 feet) of each other, although the connection may be subject to interference from obstructions such as walls or from other electronic devices.

Recycle: Return your used electronic products, batteries, and packaging materials to designated recycling points. This way you can help protect the environment and prevent the recycling of materials. Chemical and electronic products contain a lot of hazardous materials. Do not throw them away with household waste. They should be recycled.

Crossed-out wheeled bin symbol: The crossed-out wheeled bin symbol on your product, battery, batteries, or packaging reminds you not to throw these electronic products and batteries into the general waste.

Do not dispose of these products as unsorted municipal waste: Take them for recycling. For info on your nearest recycling point, check with your local waste authority.



SIZE:85X85MM

(EN)QSG_Nokia -TWS-821W_V1_20210811

Pantone 296C