

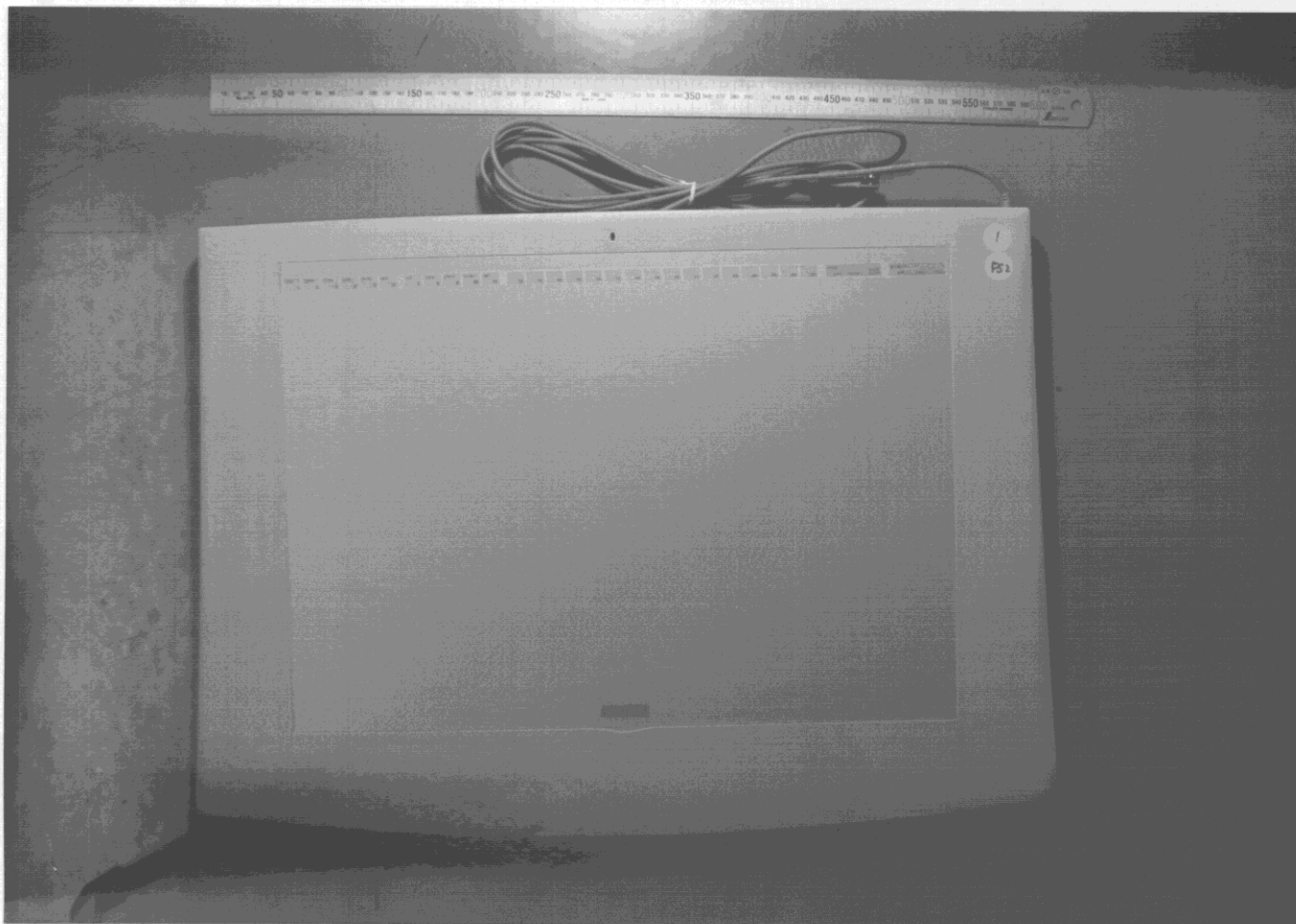
MODEL GD-1218-U      Fig.1

General - Shows front view of model.

Upper enclosure - min 3.0mm thick, overall (W/D/H) 616/445.5/37mm

Secured to the Bottom Enclosure Fig.2.

Cover sheet - Provided as an overlay on the Upper enclosure, Fig. 1.



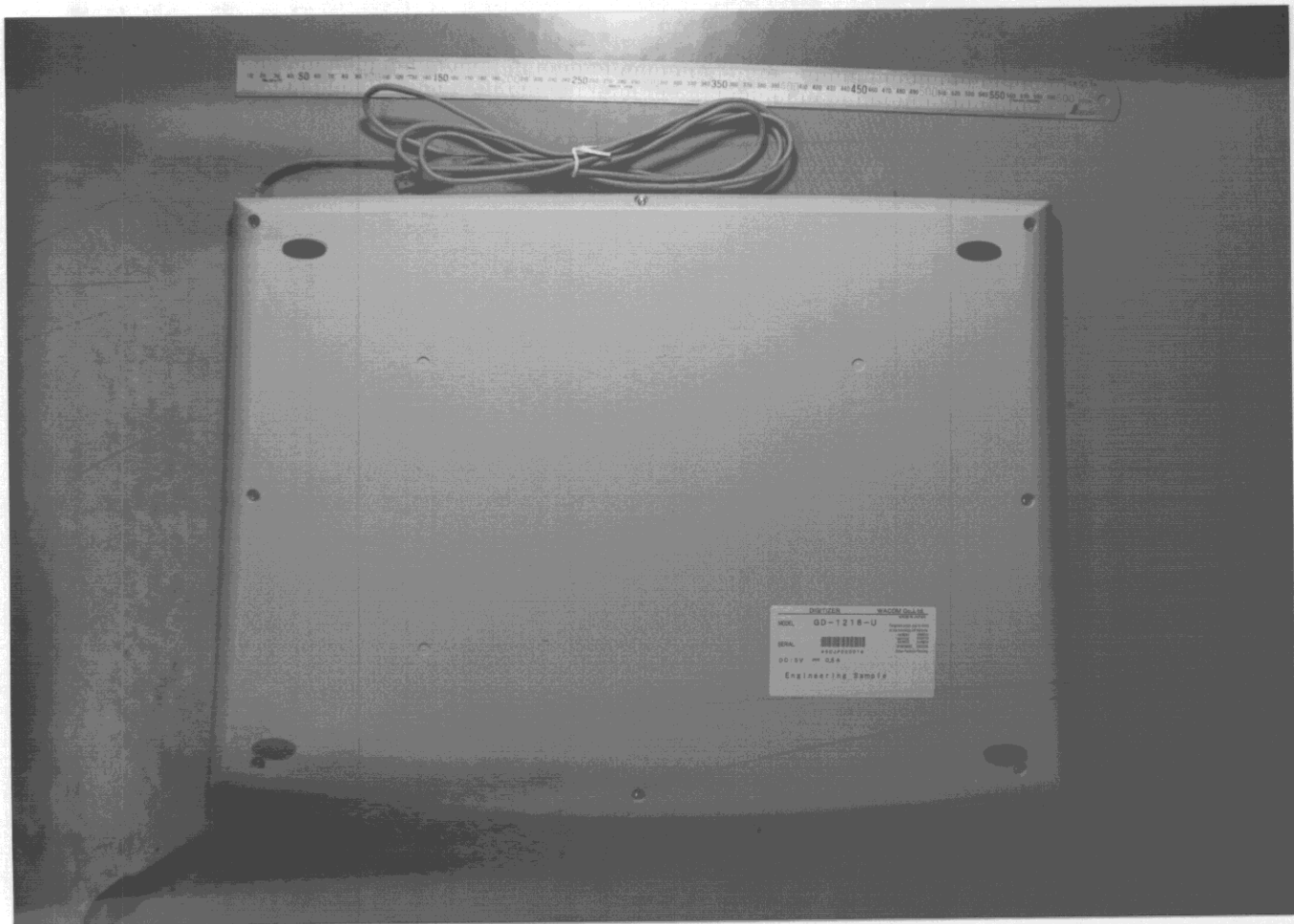
MODEL GD-1218-U      Fig.2

General - Shows rear view of model.

Bottom enclosure - min 3mm thick, overall (W/D/H) 616/445.5/37mm

Secured to the Upper Enclosure.

Product label - See Label Designs, Fig. 5, for details.



MODEL GD-1218-U

Fig.3

General - Shows internal view of model.

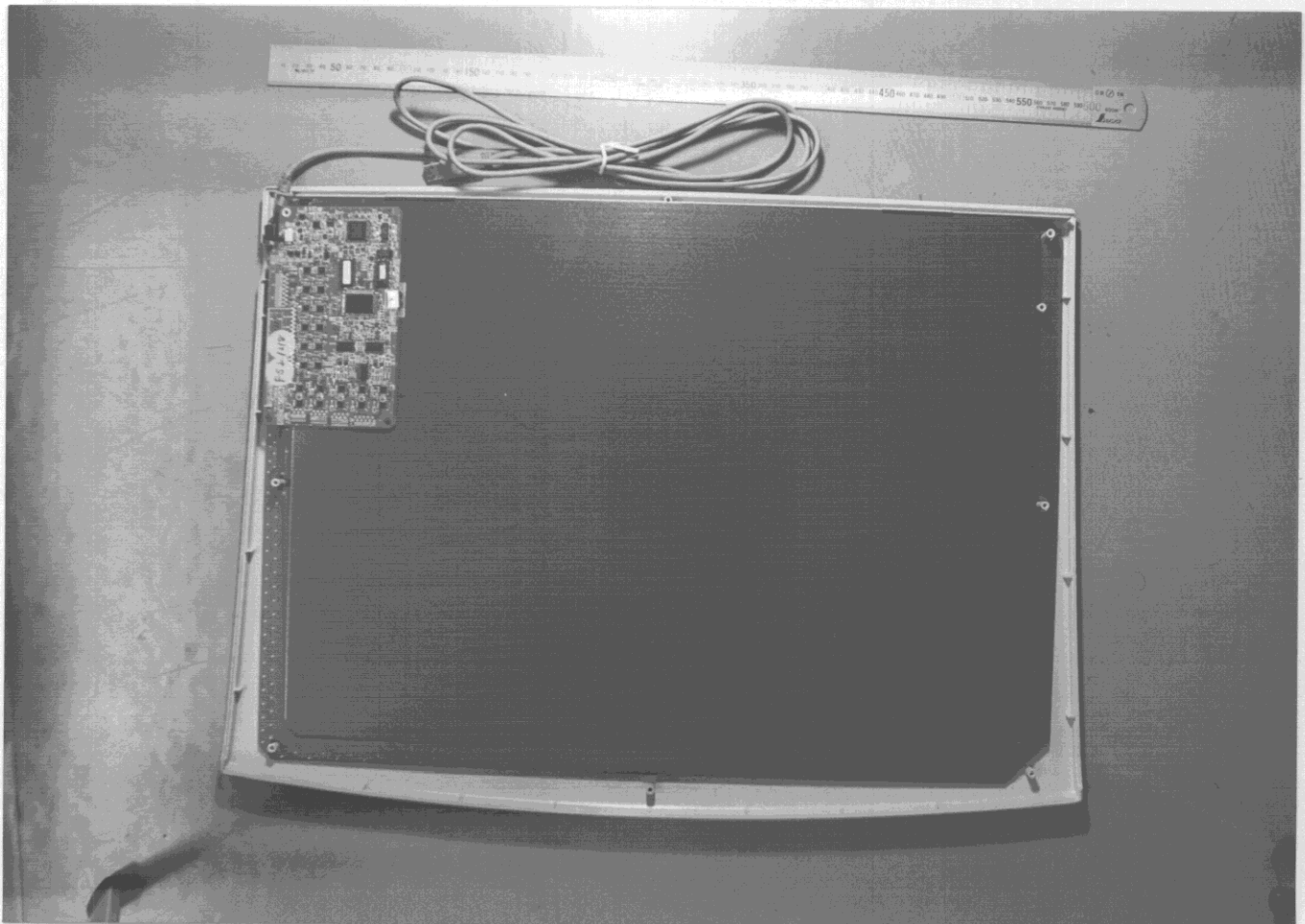
Small P.W.B - Control circuit.

Big P.W.B - Sensor Board.

Separator - 10mm thick

Cable - 2.5m(8.2ft) with Ferrite Core.

Shield sheet - Fe-Si Alloy sheet. 0.2mm thick.



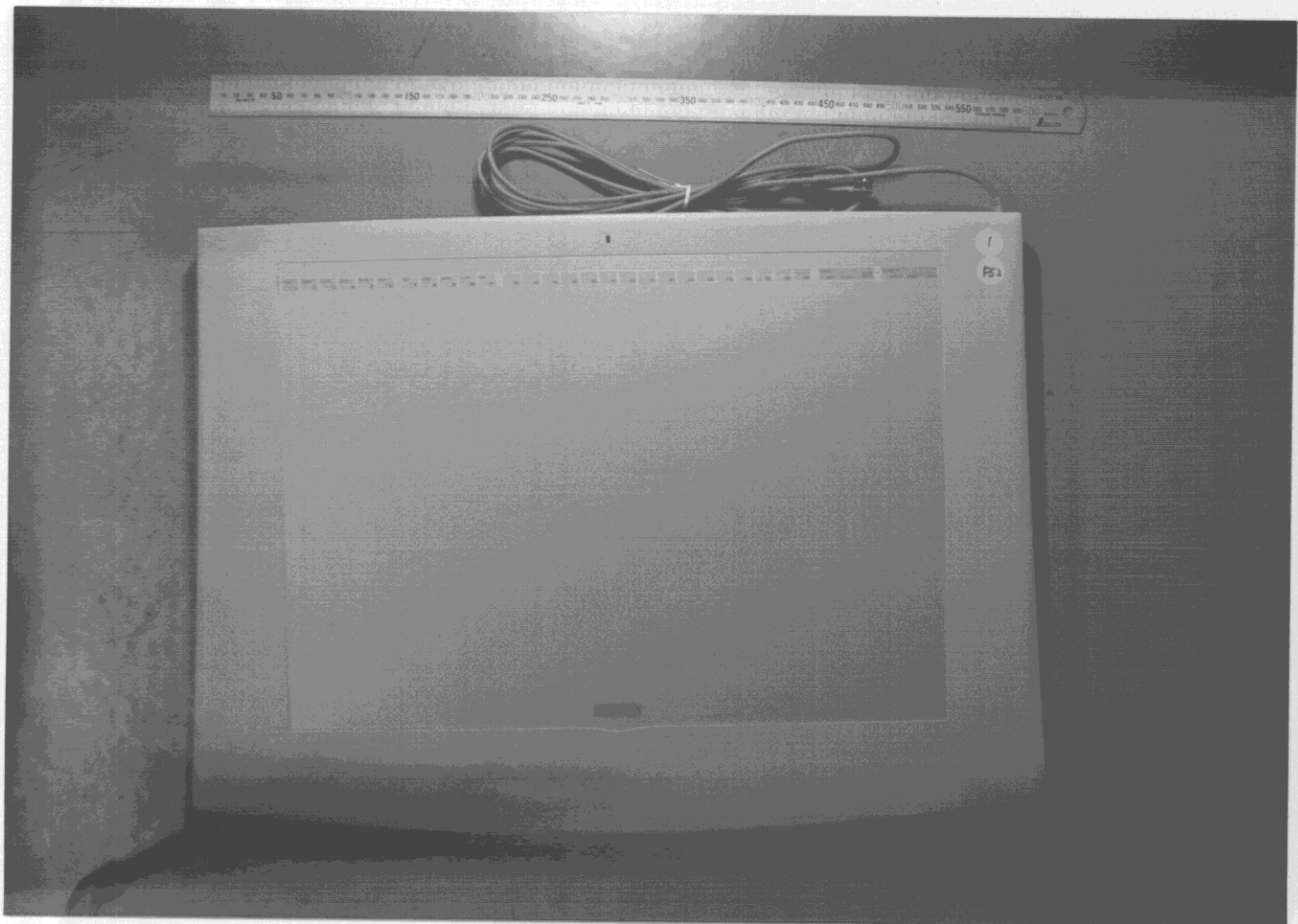
MODEL GD-1218-U      Fig.1

General - Shows front view of model.

Upper enclosure - min 3.0mm thick, overall (W/D/H) 616/445.5/37mm

Secured to the Bottom Enclosure Fig.2.

Cover sheet - Provided as an overlay on the Upper enclosure, Fig. 1.



MODEL GD-1218-U      Fig.2

General - Shows rear view of model.

Bottom enclosure - min 3mm thick, overall (W/D/H) 616/445.5/37mm

Secured to the Upper Enclosure.

Product label - See Label Designs, Fig. 5, for details.





MODEL GD-1218-U

Fig.3

General - Shows internal view of model.

Small P.W.B - Control circuit.

Big P.W.B - Sensor Board.

Separator - 10mm thick

Cable - 2.5m(8.2ft) with Ferrite Core.

Shield sheet - Fe-Si Alloy sheet. 0.2mm thick.

