

Mini Soundbar Speaker

HS-BT611



EN 10W PORTABLE MINI SOUNDBAR
ES MINIBARRA DE SONIDO PORTÁTIL DE 10W
FR MINI BARRE DE SON PORTABLE 10W

User guide/ Guía del usuario/Mode d'emploi

www.istarproducts.com

Contents.....	Page
Warnings	2
Connections and Controls	3
Charging and Powering.....	4
Bluetooth Mode	4-6
AUX In Mode.....	6
USB and Micro SD/TF Card Mode	6
FM mode	7
Low Battery and Power Saving.....	8
Specifications.....	8
Troubleshooting.....	9
Technical Support	9

Warnings and advice

Keep away from naked flames, and dripping or splashed fluids.

The unit should not be exposed to direct sunlight, very high or low temperatures, moisture, strong magnetic fields, high frequencies and dusty environments.

Do not use abrasives, benzene, thinner or other solvents to clean the surface of the unit. To clean, wipe with a clean soft cloth it and a mild detergent solution.

Never attempt to insert wires, pins or other such objects into the vents or openings of the unit.

Do not disassemble or modify the soundbar, there are no user serviceable parts.

If the soundbar is damaged or malfunctions do not use. Consult a qualified service engineer.

This product contains a Lithium battery. It must be used and charged properly. Improper use can cause the battery to catch fire or explode resulting in serious or fatal injury.

Box Contents

1x 10W Portable Mini Soundbar
1x Micro USB charging cable
1x 3.5mm to 3.5mm AUX IN cable

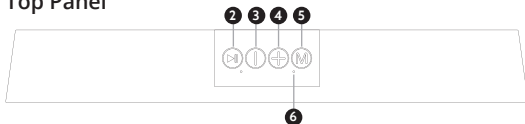
Introduction

Your **IS-SB02** Portable Mini Soundbar combines a very compact design with an excellent audio response. The two built-in 10W drivers provide clarity across a broad frequency range, with crisp treble and deep bass. Input options include Bluetooth, AUX IN and MP3/WAV files on flash media via USB port.

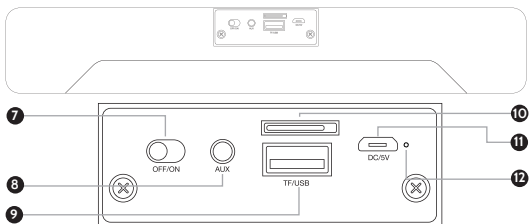
Front Panel



Top Panel



Back Panel & Connections

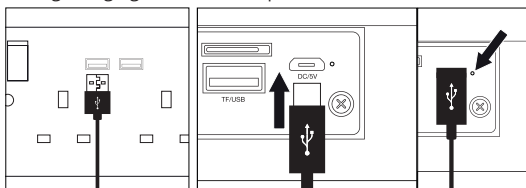


Connection and Controls

- | | |
|------------------------------|--------------------------------|
| 1. Speakers | 7. OFF/ON Switch |
| 2. Play/Pause | 8. AUX In Port |
| 3. Previous Track / Volume - | 9. USB Port |
| 4. Next Track / Volume + | 10. SD/TF Card Slot |
| 5. Mode Selection | 11. Micro USB Charging Port |
| 6. Blue LED Indicator | 12. Red LED Charging Indicator |

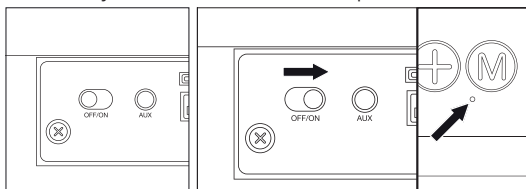
Charging your Soundbar

The **IS-SB02** has a built-in rechargeable Lithium battery. For best results, the first time you use the soundbar, let it charge for 5-6 hours until fully charged. The red LED will show red during charging. Follow the steps below.



Powering on your Soundbar

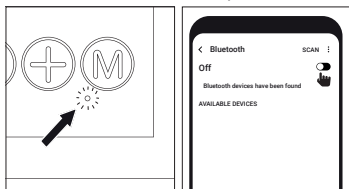
To turn on your soundbar, follow the steps below.



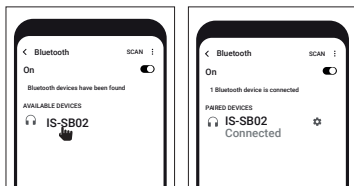
The blue LED will show a solid blue when the device is on.

Bluetooth Mode

The soundbar will automatically enter Bluetooth mode, and will enter into pairing mode if no device has already been connected. Follow the steps below to connect.



The flashing LED shows the soundbar is in pairing mode.



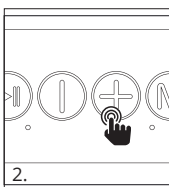
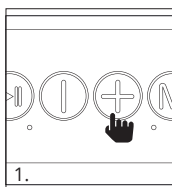
When paired the blue LED will flash slower.

The soundbar will now automatically reconnect with this device whenever it is within range and has Bluetooth turned on.

Bluetooth Mode Controls

Select a piece of music, podcast, audio book etc. and play!

You can control the audio from the device or your soundbar.

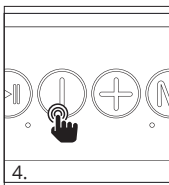
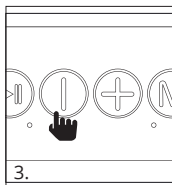


1. Short press +:

Next track

2. Press and Hold +:

Volume up



3. Short press -:

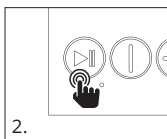
Previous track

4. Press and Hold -:

Volume down

Bluetooth Call

When connected through Bluetooth, you can answer, decline and end calls using the soundbar.



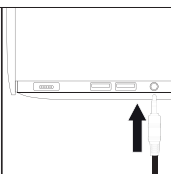
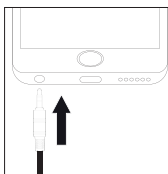
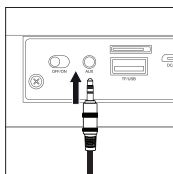
1a. Short press :
Answer call

1b. Short press :
End call

2. Press and Hold :
Decline call

AUX IN Mode

The soundbar will automatically enter into AUX mode when an AUX 3.5mm - 3.5mm stereo jack cable (supplied) is connected to a compatible device, such as a mobile phone or laptop and inserted into the AUX in port on the soundbar.

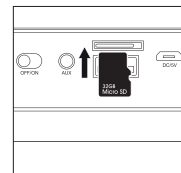
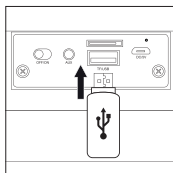


The audio can be controlled using the soundbar or device.

USB and Micro SD/TF Card MP3 Media Mode

The soundbar is compatible with USB flash drives up to 64GB in size (FAT32 format) and can playback MP3 and WAV audio files.

The soundbar is also compatible with and can play MP3 loaded onto a TF/Micro SD card.

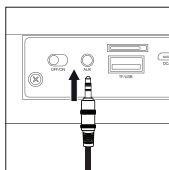


Memory Function

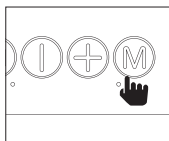
The media player also has a memory function, when a previously played USB flash drive or TF/ Micro SD card is reinserted it will recall and continue playing from the same point in the last played audio file. Ideal for interrupted podcasts or audiobooks.

FM Mode

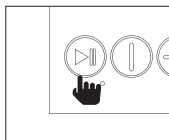
The soundbar also has a built in FM radio mode, allowing to listen to FM radio stations.



Connect the AUX IN cable (supplied) and fully extend to improve reception.

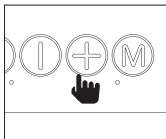
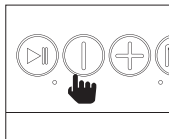


Press the Mode Selection button (5) to enter FM Mode.



Press the Play/Pause button (2) to Auto Scan for all available FM Frequencies.

Press the Previous/Next buttons (2) to select skip to next or previous available FM radio stations.



Low Battery Charge Warning

When the battery reaches a low charge you will hear a repeated "low battery" voice message every 15 seconds. If the soundbar isn't placed on charge and the battery reaches a certain level, after 15 seconds the soundbar will switch off.

Power Saving Function

To conserve power, the soundbar will turn off after 15 minutes of inactivity. In order to use the soundbar again, turn off and back on.

Specifications	
Charging requirement	5V 0.5A USB power
Battery	Li-ion 1200mAh
Audio output	2x 5W
Drivers	2x 52mm
Frequency	100Hz~20kHz
Playback time	5-6 hours
Bluetooth version	5.0
Bluetooth range	≤ 10m
Connections	Bluetooth, USB, AUX (3.5mm), SD card
Dimensions	380 x 60 x 55mm (L x H x D)

Problem	Solutions		
No power/ Blue LED is off	Battery needs charging	Connect to a powered USB socket with charging cable	
There is no sound being emitted	Adjust the volume on your Bluetooth or AUX device as well as on the soundbar for optimum volume and sound quality	Make sure that your Bluetooth device is in effective range	Ensure that the Bluetooth device is paired or AUX device is properly connected
In BT/AUX mode the soundbar switches itself off	Soundbar switches off automatically after 15 mins if there is no input in Bluetooth/AUX mode	Switch the soundbar power button off and on again	Pair your device again if necessary
USB drive/ TF Card files won't play	The audio files are not compatible: must be MP3 or WAV format	The USB flash drive is not compatible, must be max 64GB, FAT32 format	

Technical Support

For further advice please visit our technical website at <http://www.philex.com/products/technical-support/>

Declaration of Conformity

Hereby, Philex Electronic Ltd. declares that the radio equipment: model 90093PI i-Star 10W Portable Mini Soundbar for radio broadcast reception in domestic premises is in compliance with the Radio Equipment Directive 2014/53/EU. The full text of the EU declaration of conformity is available at the following internet address: www.philex.com/doc

Warning: Changes or modifications to this unit not expressly approved by the party responsible for compliance could void the user's authority to operate the equipment.

NOTE: This device complies with part 15 of the FCC Rules. Operation is subject to the following two conditions: (1) This device may not cause harmful interference, and (2) this device must accept any interference received, including interference that may cause undesired operation.

FCC Statement:

This equipment has been tested and found to comply with the limits for a Class B digital device, pursuant to part 15 of the FCC Rules. These limits are designed to provide reasonable protection against harmful interference in a residential installation. This equipment generates, uses and can radiate radio frequency energy and, if not installed and used in accordance with the instructions, may cause harmful interference to radio communications. However, there is no guarantee that interference will not occur in a particular installation. If this equipment does cause harmful interference to radio or television reception, which can be determined by turning the equipment off and on, the user is encouraged to try to correct the interference by one or more of the following measures:

- Reorient or relocate the receiving antenna.
- Increase the separation between the equipment and receiver.
- Connect the equipment into an outlet on a circuit different from that to which the receiver is connected.
- Consult the dealer or an experienced radio/TV technician for help.

Waste electrical and electronic products should not be disposed of with household waste. Please recycle where facilities exist. Check with your Local Authority for recycling advice.



Made in China. © Philex Electronic Ltd 2021. vb1.1