

VEGAPULS 6X  
FCC: O6QPS6XW  
IC: 3892A-PS6XW

# VEGAPULS 6X External Photos

## Table of Contents

1	Housings .....	2
1.1	Overview of all housings.....	2
1.2	Worst-case housing for test.....	3
1.3	Other housings .....	4
2	Antennas .....	10
2.1	Plastic Horn Antenna.....	10
2.2	Flange with encapsulated antenna system.....	12
2.3	Flange with lens antenna.....	14
2.4	Thread with integrated horn antenna.....	15
3	Sensors .....	16
3.1	VEGAPULS 6X with plastic horn antenna and plastic single chamber .....	16
3.2	VEGAPULS 6X with plastic horn antenna and plastic double chamber .....	16
3.3	VEGAPULS 6X with flange with lens antenna and plastic single chamber .....	17
3.4	VEGAPULS 6X with flange with lens antenna and plastic double chamber.....	17
3.5	VEGAPULS 6X with thread with integrated horn antenna and plastic single chamber .....	18
3.6	VEGAPULS 6X with thread with integrated horn antenna and plastic double chamber .....	18
3.7	VEGAPULS 6X with flange with encapsulated antenna system and plastic single chamber .....	19
3.8	VEGAPULS 6X with flange with encapsulated antenna system and plastic double chamber .....	19

## 1 Housings

### 1.1 Overview of all housings

Plastic single chamber	Plastic double chamber	Aluminium single chamber	Aluminium double chamber	Stainless steel single chamber	Stainless steel double chamber	Stainless steel single chamber electropolished
						

## 1.2 Worst-case housing for test

Plastic single chamber



Top of housings:



Bottom of the housings:



### 1.3 Other housings

#### Plastic double chamber



Top of the housing:



Bottom of the housing:



---

Aluminium single chamber



Top of the housing:



Bottom of the housing:



---

Aluminium double chamber



Top of the housing:



Bottom of the housing:



---

Stainless steel single chamber



Top of the housing:



Bottom of the housing:





Stainless steel double chamber



Top of the housing:



Bottom of the housing:





---

Stainless steel single chamber (electropolished)



Top of the housing:



Bottom of the housing:



---

## 2 Antennas

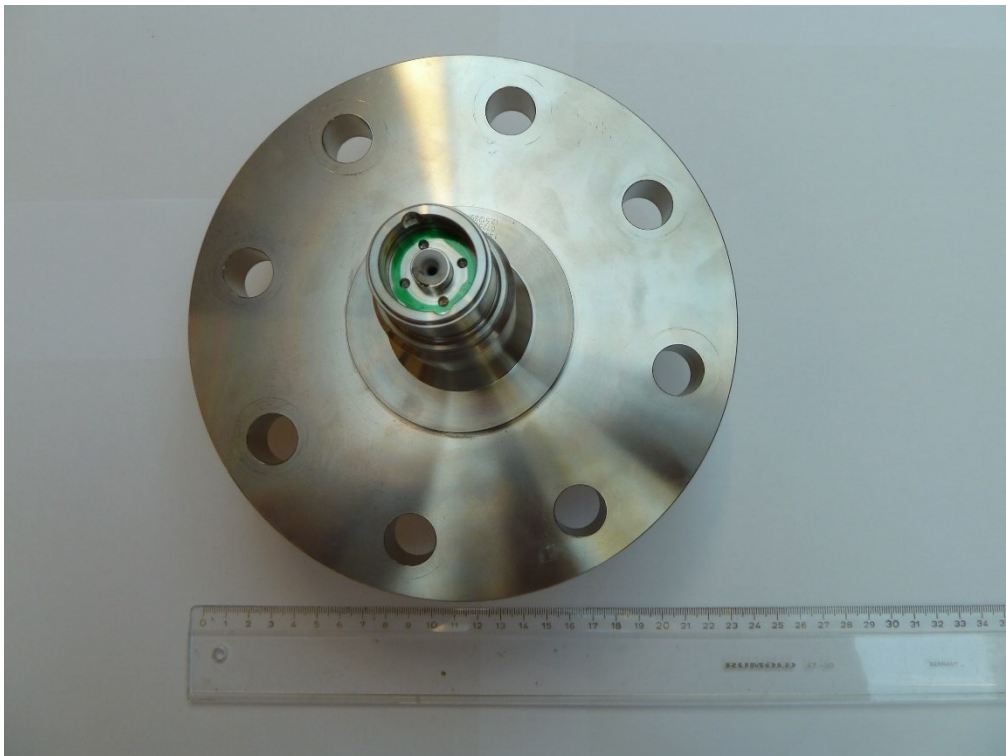
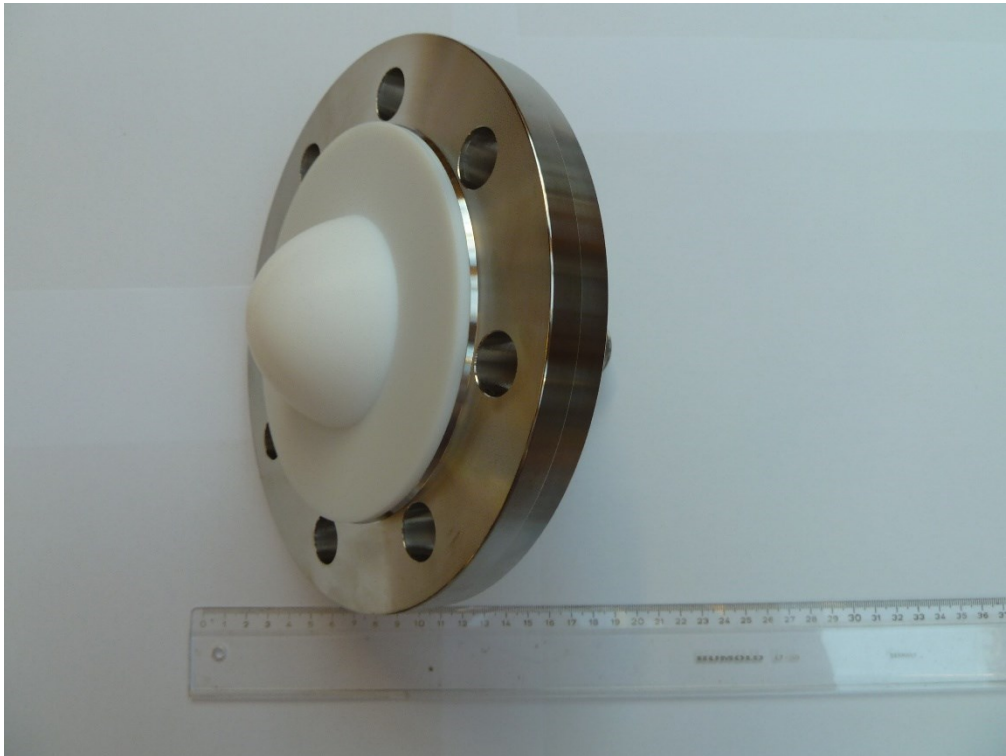
### 2.1 Plastic Horn Antenna



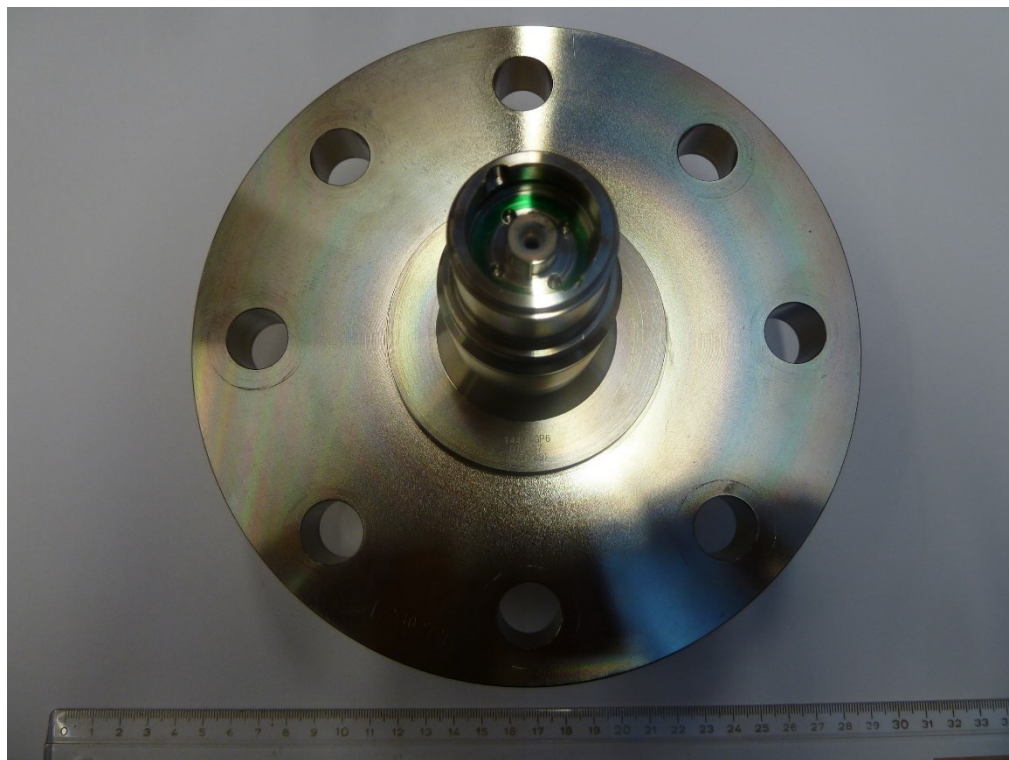


---

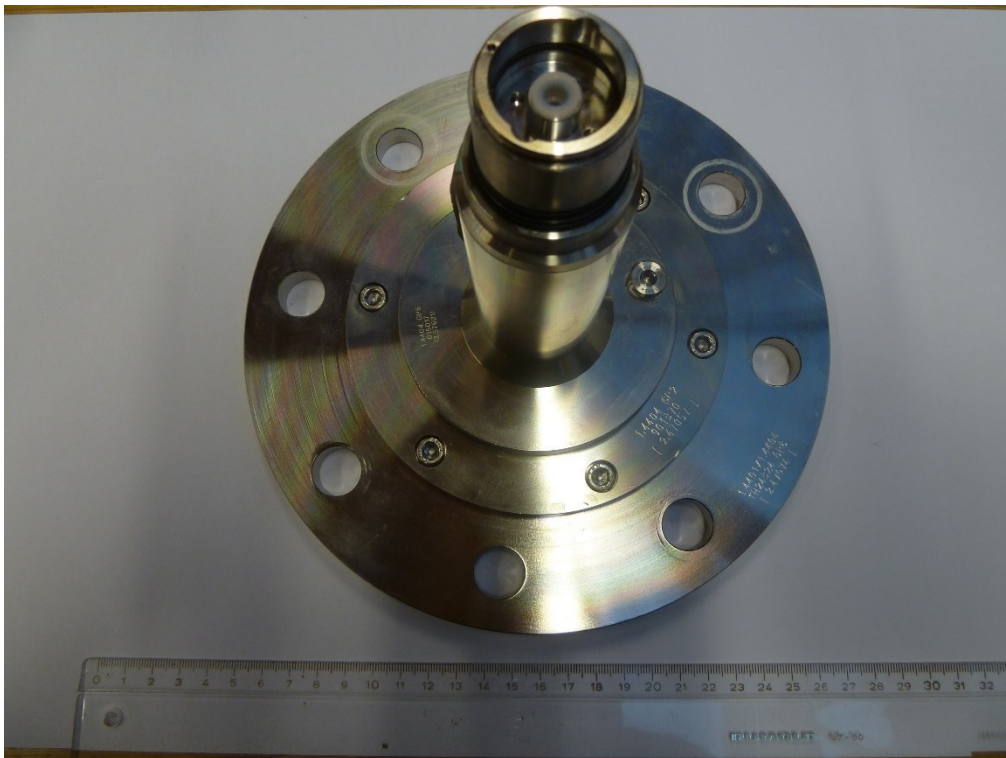
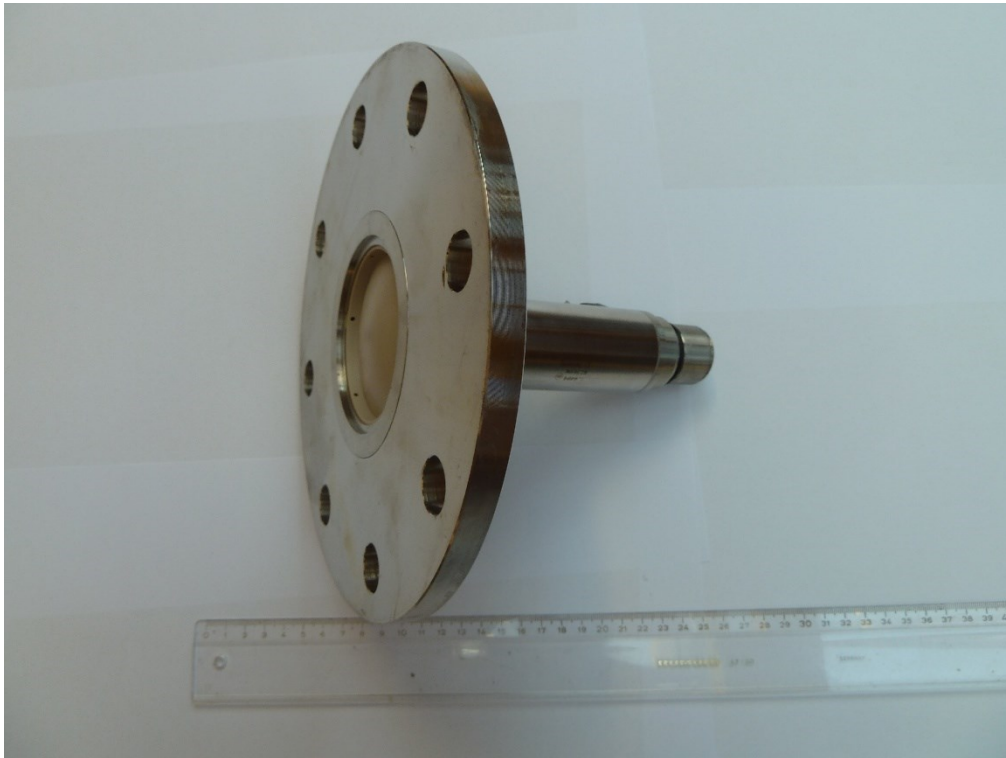
## 2.2 Flange with encapsulated antenna system





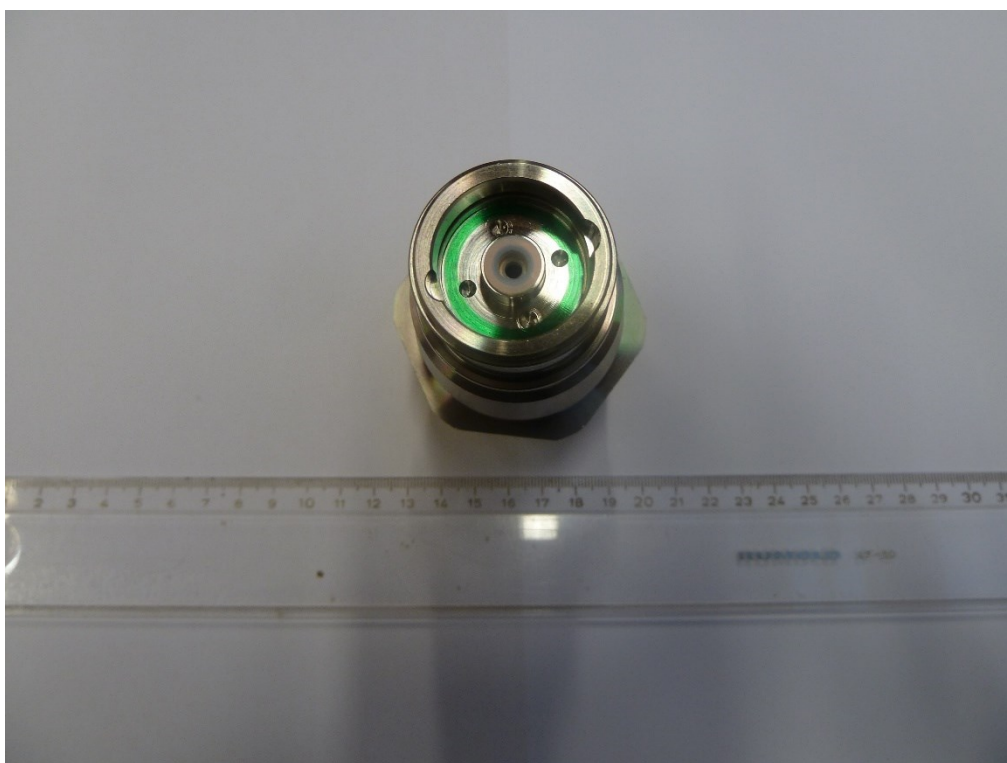


## 2.3 Flange with lens antenna





## 2.4 Thread with integrated horn antenna



### 3 Sensors

In the following chapters, the modular system between the housing and the antenna is presented as an example. For the enclosures, the plastic variants were chosen as illustrative models.

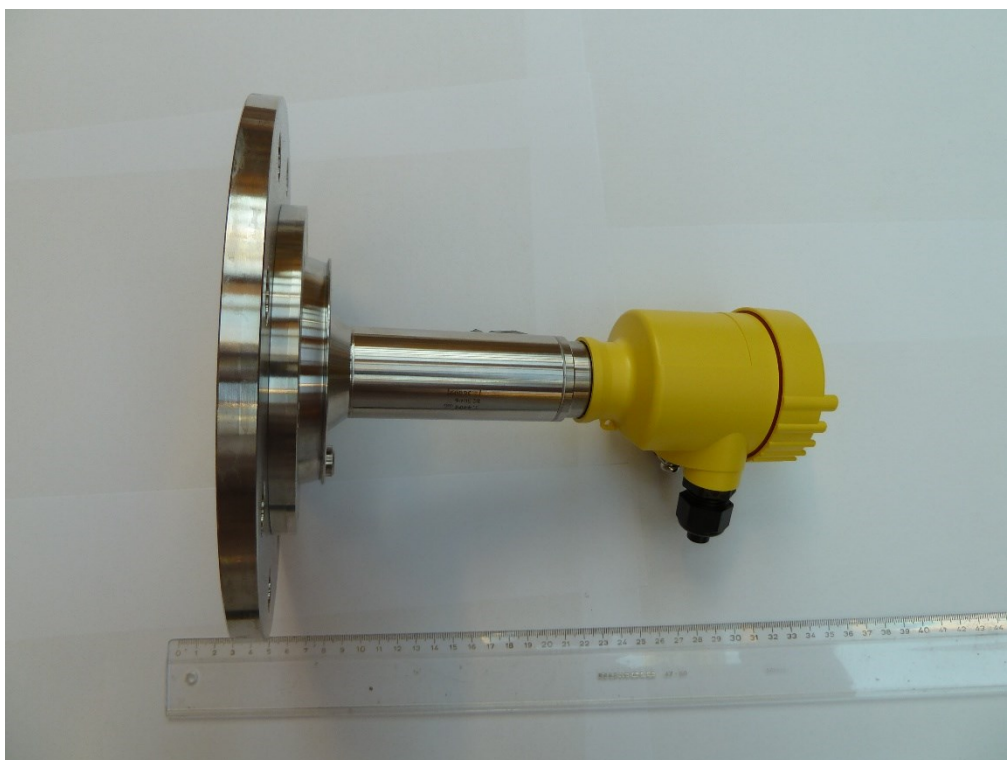
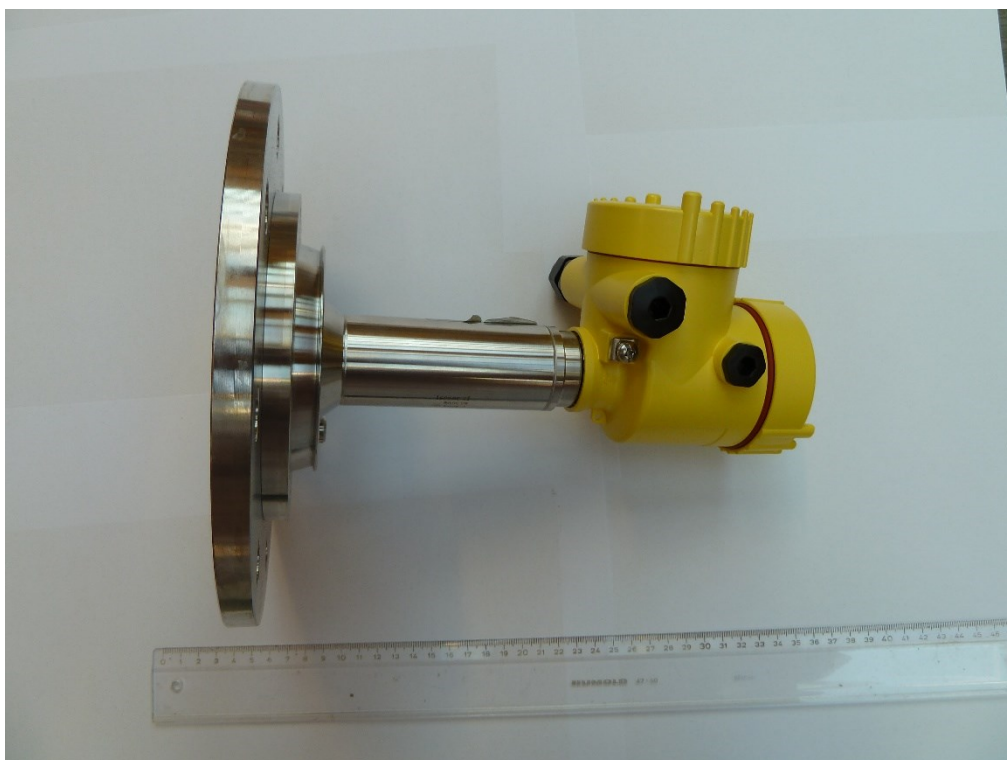
#### 3.1 VEGAPULS 6X with plastic horn antenna and plastic single chamber



#### 3.2 VEGAPULS 6X with plastic horn antenna and plastic double chamber



---

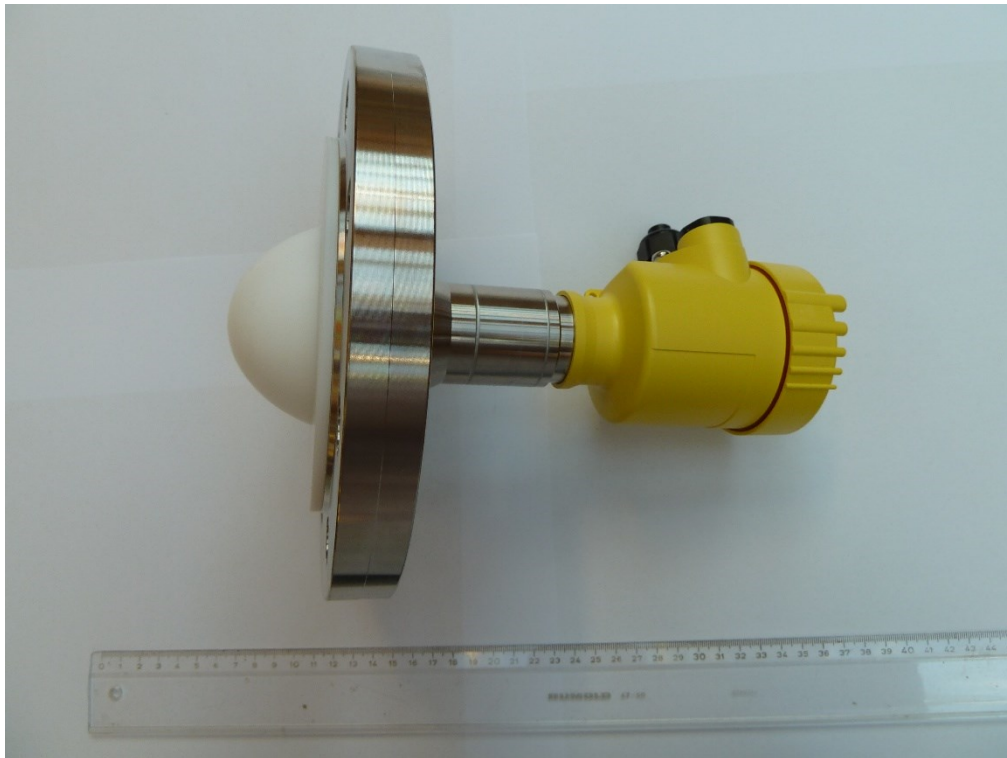
**3.3 VEGPULS 6X with flange with lens antenna and plastic single chamber****3.4 VEGPULS 6X with flange with lens antenna and plastic double chamber**



---

**3.5 VEGAPULS 6X with thread with integrated horn antenna and plastic single chamber****3.6 VEGAPULS 6X with thread with integrated horn antenna and plastic double chamber**

---

**3.7 VEGAPULS 6X with flange with encapsulated antenna system and plastic single chamber****3.8 VEGAPULS 6X with flange with encapsulated antenna system and plastic double chamber**