

Statement

We Quectel Wireless Solutions Co., Ltd declare the following models.

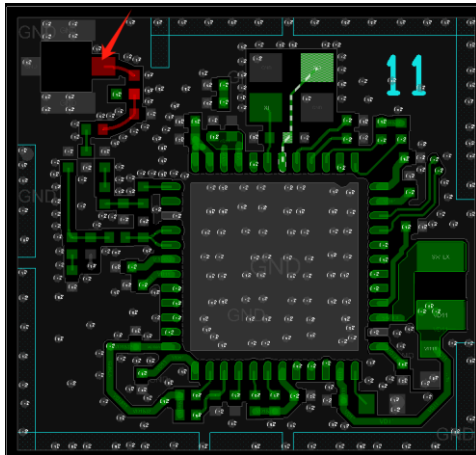
Product Name: FGM840R LGA Module

Model Number: FGM840R

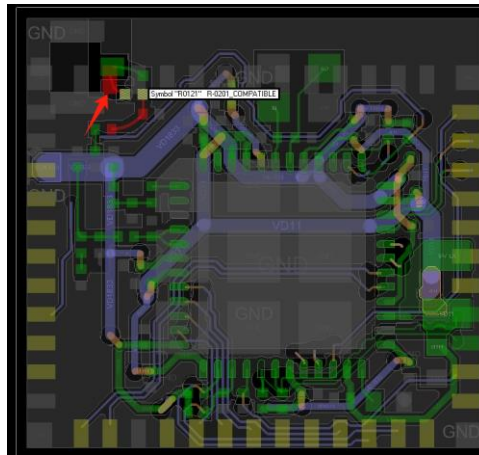
Hardware Version: R1.0

FGM840RAAMD-4X-04 and FGM840RAAMD-0L-04 both use RTL8720DF chipset, share the same chipset baseline, same software and hardware design, the primary difference lies in the antenna pedestal. FGM840RAAMD-4X-04 use IPEX antenna port, FGM840RAAMD-0L-04 use LCC pad port, Distinguish by changing the position of one resistor.

● PCB changes



FGM840RAAMD-4X-04



FGM840RAAMD-0L-04A

● ANT Difference Table

| | |
|------------------------------------|-------------------------------|
| FGM840RAAMD-4X-04 | FGM840RAAMD-0L-04 |
| use IPEX antenna port at TOP layer | use LCC pad port at BOT layer |

Above changes won't impact the protocol and RF performance for same frequency. Your assistance on this matter is highly appreciated.

Person responsible for making this statement.

Name/Surname: 

Position/Title: Certification Manager

Issue Date: December 6, 2024