



Smart **Wi-Fi** dimmer switch
Single pole



User guide

Thank you for purchasing the **Smart Wi-Fi dimmer switch** from Nexxt Solutions. We are excited for being a part of making your life easier, safer and bringing peace of mind inside and outside your home.

Package content

- Dimmer switch (1)
- Wall plate (1)
- Mounting screw (2)
- Wire nut (4)
- Quick start guide (1)

Safety information

Precautions

Please read and understand this entire manual before attempting to assemble, install and operate this smart electrical fixture.

This product requires replacing the existing switch through a hard-wiring process.

This smart electrical fixture requires 110-220-volt AC.

This device has been tested by the manufacturer according to all international electrical standards. However, every country has different standards and rules for installing electrical cabling and equipment in a home.

Please check with your local and state laws prior to using this device.

Installation of this product must be performed by a qualified electrician or a certified electrical technician. Do not attempt to perform installation if you are not familiar with hardwired electrical connections.

Improper installation of product may cause electrical injury to an individual and can lead to loss of warranty.

Nexxt Solutions assumes no liability for the improper installation of this product.



Turn power off at the circuit breaker or fuse.

Use only when it's installed with a residual current device (RCD) or current leakage protector at home.



WARNING: For safety, this dimmer switch must be properly grounded.



WARNING: To avoid the risk of electric shock or electrocution, install the dimmer switch away from any water source.



WARNING: This dimmer switch supports single pole circuits only. It is not compatible with 3-way (multi-location control) connection circuits.



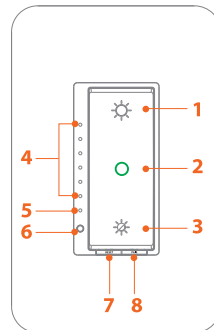
WARNING: A neutral wire is needed to power the dimmer switch.

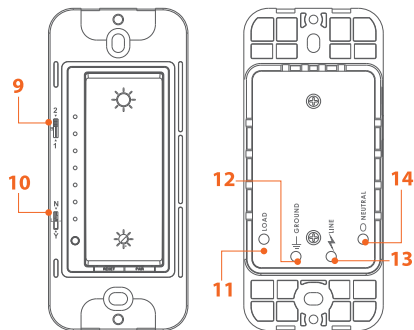


WARNING: This device is single band and will only work with 2.4GHz Wi-Fi routers.

Product overview

- 1. Bulb brightness control-** press to increase the brightness level of your lights
- 2. Power status LED Indicator-** tap to power on and off
- 3. Bulb brightness control-** press to decrease the brightness level of your lights
- 4. Brightness indicator LED lights**
- 5. Wi-Fi indicator**
- 6. LED intensity level button-** press to control the brightness level of all the LED indicators on the dimmer switch
- 7. Reset button**
- 8. Pairing button**
- 9. DIP switch 1**
- 10. DIP switch 2**
- 11. Load wire (red)**
- 12. Ground wire (green)**
- 13. Line wire (black)**
- 14. Neutral wire (white)**





Control	LED light	Status	Description
Power LED	Blue	On	The light glows solid when the device is connected
	Green	Off	The device is not powered
Wi Fi indicator LED	Red	Blinks fast	Indicates that the device is ready for pairing (default)
	Red	Blinks slowly (once every 3 seconds)	Ready for connection (AP mode only)
	Red	Intermittent flashing	No internet connection
	Red	Solid	Indicates that pairing is successful

Control	LED light	Status	Description
Brightness indicator	Green	Illumination display	Indicates the brightness level being used, from min. to max.
DIP switch 1		Y	Set this option for dimmable bulbs
		N	Set this option if your bulb is not dimmable (conventional bulb)
DIP switch 2		1	Switch 1: For 110V Applies to bulbs with electrical rating as follows: at 110VAC, 20mA-100mAh; 2W -10W For 220V Applies to bulbs with electrical rating as follows: at 220VAC, 20mA-50mAh; 4W -10W <i>*If your bulb starts flickering, switch to option 2</i>
		2	Switch 2: For 110V Applies to bulbs with electrical rating as follows: at 110VAC, 40mA-1A; 2W -10W For 220V Applies to bulbs with electrical rating as follows: at 220VAC, 20mA-50mAh; 4W -10W <i>*If your bulb starts flickering, switch to option 1</i>

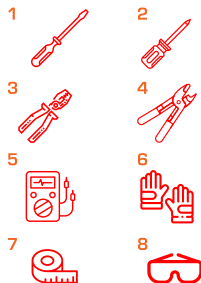
Initial inspection

Before installing the electrical fixture, ensure that all parts are included in the package. If any part is missing or damaged, do not attempt to assemble, install, or operate this product.

Estimated installation time: about 30 minutes.

Tools that may be required but are not included for installation

1. Phillips screwdriver
2. Flathead screwdriver
3. Pliers
4. Wire strippers/cutters
5. Circuit tester
6. Work gloves
7. Electrical tape
8. Safety goggles



Hardware installation

IMPORTANT

For safety, properly ground the dimmer switch

Always follow the code standards when installing wired connections.

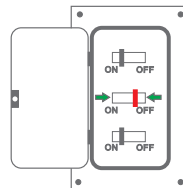
Step 1

Shut power off at the breaker

Find the breaker that controls the circuit for the junction box where the smart dimmer switch will be installed. Turn it to the OFF position.

Place tape over the circuit breaker switch and verify that power is off.

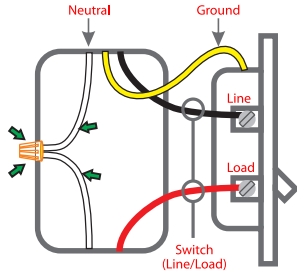
Note: you can use the circuit tester at this point to verify that power is cut off.



Step 2

Remove the original switch from the wall box

Identify the Line, Load, Neutral and Ground wires.



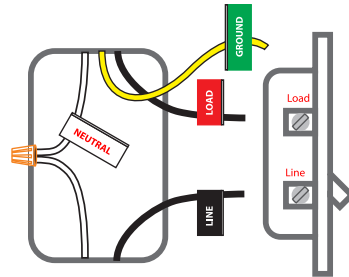
Note: If the existing switch has two jacks, you may find 5 wires or more. Identify the neutral, line, load and ground wires. This smart dimmer switch only needs to use these 4 wires, since it does not require the connection of additional circuits.

Step 3

Label your wires

Mark the corresponding cables before removing the existing dimmer switch.

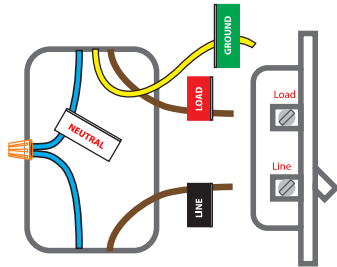
Note: All the images are for reference only and therefore they must not be used as a standard.



North American color code standard:

White is for neutral, black represents the live and load wires, and the yellow/green cable is for grounding.

Note: a single bare copper wire is also used to represent the ground wire in existing electrical installations.



Europe/Australia color code standard:

Blue is for neutral, brown represents the live and load wires, and the yellow/green cable is for grounding.

Note: a single bare copper wire is also used to represent the ground wire in existing electrical installations.

Step 4

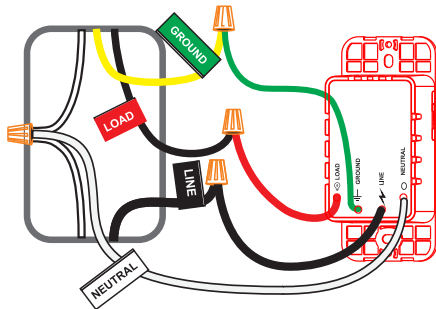
Connect the smart dimmer switch

- Using the correct polarity, match each wire from the smart dimmer switch with those coming from the junction box.
- Connect the wire ends of each pair into the wire nut, then twist each nut full turns until the connection is fully secured. Repeat this step for each cable assembly.

Note: make sure that there is no wire exposed.

Special care must be taken to follow the correct wiring configuration:

- 1) Neutral wire (white) on the smart dimmer switch to neutral on junction box.
- 2) Ground wire (yellow/green) on the smart dimmer switch to ground on junction box (ground wire maybe yellow/green or bare copper wire) depending on existing electrical installation.
- 3) Line/Live wire (black) on the smart dimmer switch to line /live wire on junction box.
- 4) Load wire (red) on the smart dimmer switch to load wire on the junction box.



Gently push all the excess wiring into the junction box.

Note: make sure all the wires are positioned in an organized manner and away from the edges of the dimmer switch and the junction box, to avoid pinching any of the cables, prior to completing the process.

Proceed to align the smart dimmer switch to the base on the junction box, so that it is oriented correctly.

Insert the two center screws through the switch and into the mounting hole on the junction box. Secure the dimmer switch to the base of the box.

To complete installation, gently push the faceplate into the box until it snaps in place.



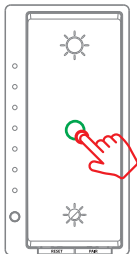
For safety, properly ground the switch

Always follow the code standards when installing wired connections.

Step 5

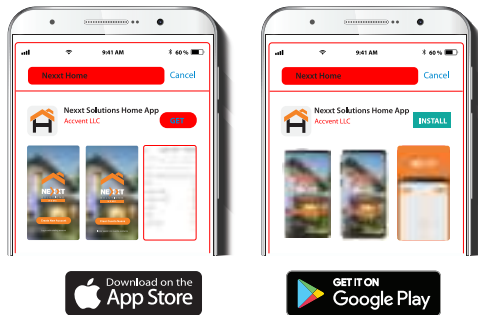
Restore power at the breaker

Turn ON the breaker that controls your smart dimmer switch to power it on. Make sure the power LED turns on green and the Wi-Fi Indicator LED starts blinking rapidly. This indicates that the device has entered into pairing mode.



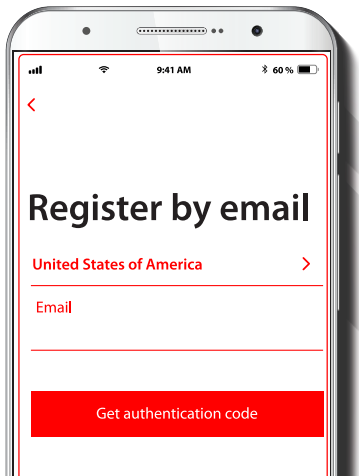
Otherwise, manually reset the device; press and hold the ON/OFF switch for approximately 7-10 seconds or until the green Wi-Fi indicator LED starts blinking rapidly.

Installing the Nexxt Solutions Home App



Download Nexxt Home app from Google Play or Apple App Store.

Step 1



A smartphone screen displaying a registration form titled "Register by email". The status bar at the top shows signal strength, Wi-Fi, time (9:41 AM), and battery (60%). The form includes a back arrow, a country selector set to "United States of America", an email input field, and a red button labeled "Get authentication code".

<

Register by email

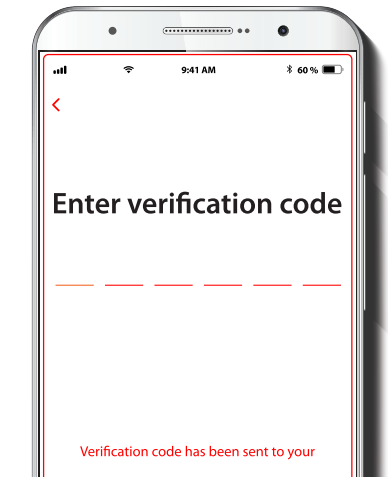
United States of America >

Email

Get authentication code

Register by email. Fill in the required fields.

Step 2



A smartphone screen displaying a verification form titled "Enter verification code". The status bar at the top shows signal strength, Wi-Fi, time (9:41 AM), and battery (60%). The form includes a back arrow, a dashed line for the verification code, and a message at the bottom stating "Verification code has been sent to your".

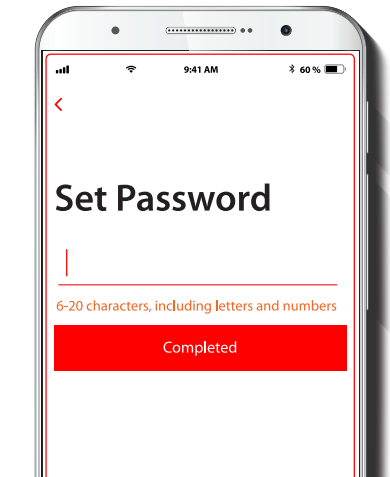
<

Enter verification code

Verification code has been sent to your

Enter the verification code you received.

Step 3



Create a new password and then select **Completed**.

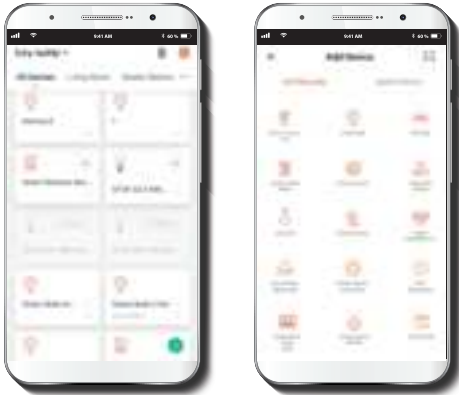
Step 4



The Nexxt Solutions Home App has been successfully installed.

Add device

Step 1



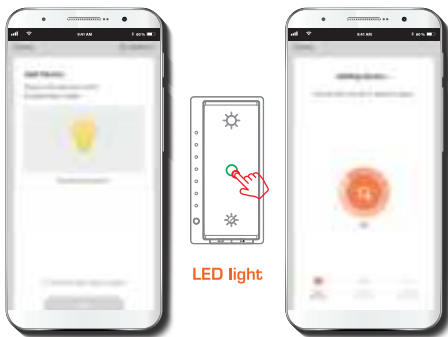
Select **Add device**, followed by the smart switch icon.

Step 2



You must connect to a **2.4GHz WiFi network**. Enter your network password. Make sure you enter the **correct** password, otherwise the device will not connect.

Step 3



By default, the device will be in pairing mode: Click on **Confirm light blinks rapidly**, and then press **Next** to continue.

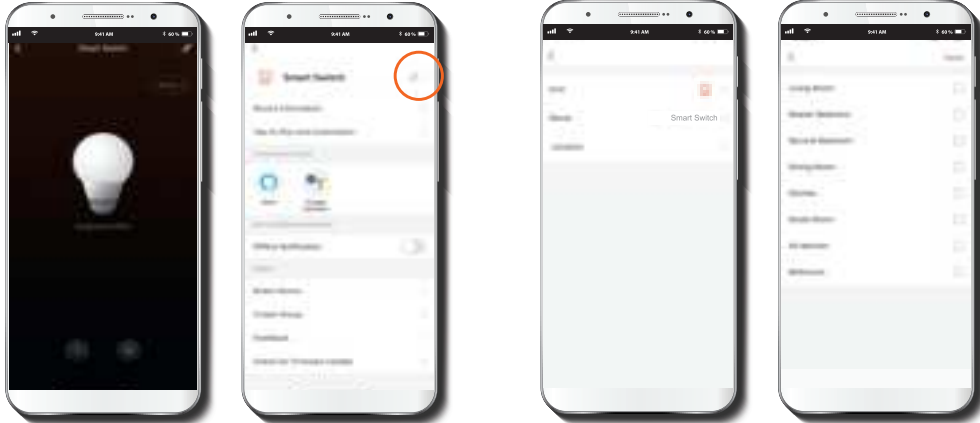
Otherwise, you must manually reset the device. Press and hold the ON/OFF switch for approximately 7 -10 seconds or until the LED starts blinking rapidly.

Step 4



When **Device added successfully** is displayed, assign a location and click on **Done**.

Step 5



You can also click on the pencil icon to open the settings menu to assign or add a different location. Go to **Location**, select the room and press **Save** to store your settings.

Main device



Main switch

Tap the bulb icon on the app to turn the dimmer switch on or off. It also indicates the current status of the device. You can do that manually by touching the power LED on the smart dimmer switch.

Configuration tools



Schedule

This interface allows the selection of specific times and days for the device to turn on or off.

Setting >

Settings (for brightness)

Enables the adjustment of the minimum and maximum levels of brightness on a scale base setting.



Brightness

Enables the selection of the light intensity based on a preset brightness setting.



Main settings

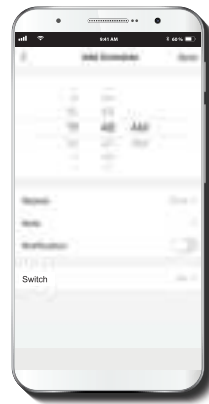
Provides access to the device's configuration parameters.

Schedule setup

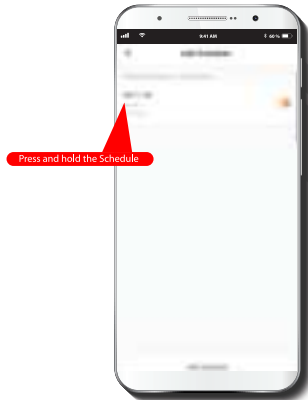


Click on the **schedule** icon to access the **Add schedule** screen.

Set the time you wish to schedule. Select **Repeat** to set daily settings. Select **Switch** to schedule on/off status. Click the **Notification soft button** to enable or disable notifications. Followed by **Save** on the upper right-hand corner to store a schedule.

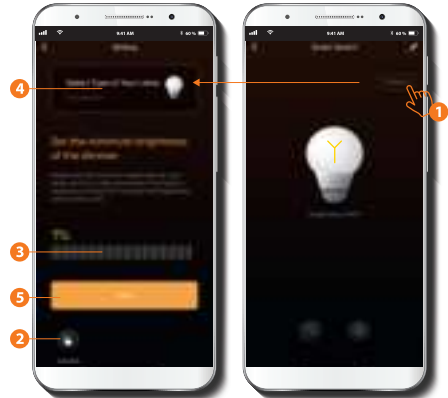


Delete setup



To remove a schedule on iOS, slide the item to the left, and for Android, press and hold **Schedule**, followed by **Delete**.

Brightness configuration



1. Click on the brightness setting icon.
2. Then tap on the padlock icon to access the brightness level adjustment interface.
3. When unlocked, adjust the brightness bar to the minimum setting on the scale, from 0 to a 100% as you desire.

-

The screenshot shows the 'Smart Systems' app interface. At the top, there's a status bar with the time '9:41 AM' and battery level '100%'. The app's header includes the title 'Smart Systems' and a search icon. Below the header, there's a navigation menu with three items: 'Home' (with a house icon), 'People' (with a group of people icon), and 'Settings' (with a gear icon). The main content area is titled 'Recommendations' and shows a list of items, with the first item being 'Up to date and 3 seconds'. There are also some blurred text and icons in the background.

The screenshot shows the 'Smart Systems' app interface. At the top, there's a status bar with the time '9:41 AM' and battery level '100%'. The app's header includes the title 'Smart Systems' and a search icon. Below the header, there's a navigation menu with three items: 'Home' (with a house icon), 'People' (with a group of people icon), and 'Settings' (with a gear icon). The main content area is titled 'Recommendations' and shows a list of items, with the first item being 'Up to date and 3 seconds'. There are also some blurred text and icons in the background.

Device name: changes the icon, name of the device and allows the user to assign a different location.

Note: click on the pencil icon to access the device name menu.

Device information: will show the data related to the Wi-Fi dimmer switch.

Tap-To-Run and Automation: links the Wi-Fi dimmer switch with other smart products to automatically control them through a customized command.

Third-party control: enables the voice recognition feature through Alexa and Google Assistant.

Offline notification: provides a selection button to enable/disable this feature.

Share device: allows sharing the Wi-Fi dimmer switch with family and friends.

Create group: makes management of devices easier by selecting and arranging multiple components under a single group.

Feedback: let us know if you have any issues setting up the product.

Check for firmware updates: we will sometimes add new features or provide upgrades with a new firmware upgrade.

Add home screen: adds a shortcut of the device to the main screen on your mobile phone.

Remove device: allows you to delete the Wi-Fi smart switch from the application.

Share device



Click on **Share devices** then tap on **Add sharing**. Enter their e-mail address. Tap **Completed/Save**. The newly configured user will now have access to your smart dimmer switch.

Note: family or friends will need their own Nexxt Solutions Home Account to access the device.

Delete user



To remove a user, on Android press and hold the name you want to eliminate. On iOS, slide to the left the user you want to remove. Click on **Delete**. A notification confirming you don't want to share the device with this user will be displayed. Click on **Confirm**.

FCC ID: X4YHADSW100

Nexxt Solutions® is a registered trademark. All rights reserved. Amazon, Alexa and all related logos are trademarks of Amazon.com, Inc. or its affiliates. Google, Android and Google Play are trademarks of Google LLC. All other brand names and trademarks are the property of their respective owners. Made in China.