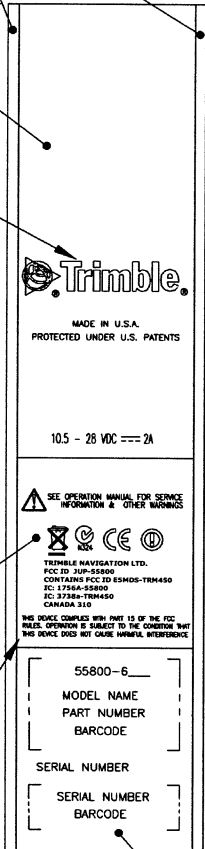
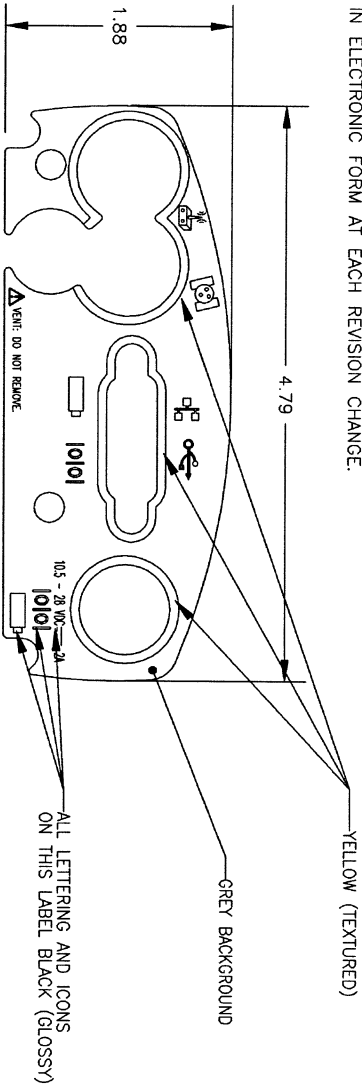


- NOTES: UNLESS OTHERWISE SPECIFIED
1. MATERIAL: .007 UV FINE TEXTURED LEXAN.
(GLOSSY TEXT & SYMBOLS PER DETAILS).
 2. ADHESIVE: .005 THICK 3M 468 ACRYLIC PSA.
 3. BOTH PARTS TO BE DELIVERED "KISS CUT" ON A SINGLE SHEET WITH ORIENTATION TO EACH OTHER AS SHOWN.
 4. COLORS: PANTONE 5C (COOL GREY), BLACK, PANTONE 294C (BLUE), AND PANTONE 116C (TRIMBLE YELLOW) PER DETAIL.
 5. ALL DIMENSIONS ARE CRITICAL AND TO BE INSPECTED.
 6. MARK SHEETS ON ANY SURFACE, WITH TNL PART NUMBER AND REV LEVEL.
 7. USE TNL DOCUMENT 32701-DP AS REFERENCE.
 8. THIS DRAWING TO BE ACCOMPANIED WITH ARTWORK FILE 57256-02-AW.A1 OR .CDR.
 9. ARTWORK TAKES PRECEDENCE OVER ALL ICONS AND TEXT SHOWN ON THIS DRAWING.
 10. VENDOR TO SUPPLY FINISHED ARTWORK IN ELECTRONIC FORM AT EACH REVISION CHANGE.



MATERIAL		UNLESS OTHERWISE SPECIFIED APPROVALS		DATE		TITLE	
SEE NOTES	FINISH	DECIMALS	ANGLES	APPROVED BY		WAMEL 450 RADIO	
SEE NOTES		.XX ± 0.020	± 0.500	ENGINEERED BY			
DO NOT SCALE DRAWING		.XXX ± 0.010		DRAWN BY	8/18/05	ASME Y14.5 1994	SCALE DO NOT SCALE SHEET
				CHECKED BY			

ECN		REV		DESCRIPTION		DATE		APPROVED	
C13345		A		RELEASE TO PRODUCTION		10/25/05		B COLEMAN	
		B		ADDED SERIAL NUMBER BOX		12/07/05		B COLEMAN	