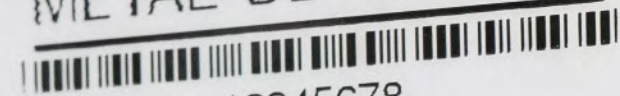




RADIO

External Visible
ID Location

GARRETT
METAL DETECTORS



12345678

Made In the USA

MODEL: MZ 6100
INPUT: 100-240V~ 40W
50/60 Hz



C US
200965



WARNING: DISCONNECT SUPPLY BEFORE SERVICING
ATTENTION: DÉCONNECTER L'ALIMENTATION AVANT TOUT ENTRETIEN.
CAUTION: RISK OF ELECTRIC SHOCK - DISCONNECT THE ELECTRIC POWER BEFORE SERVICING
DANGER: RISQUE DE SECOUSSE ÉLECTRIQUE. DÉBRANCHER LA SOURCE D'ALIMENTATION ÉLECTRIQUE AVANT TOUT ENTRETIEN.

This device complies with part 15 of the FCC Rules. Operation is subject to the following two conditions: (1) This device may not cause harmful interference, and (2) this device must accept any interference received, including interference that may cause undesired operation.

This device contains licence-exempt transmitter(s)/receiver(s) that comply with Innovation, Science and Economic Development Canada's licence-exempt RSS(s). Operation is subject to the following two conditions: (1) This device may not cause interference. (2) This device must accept any interference, including interference that may cause undesired operation of the device.

L'émetteur/récepteur exempt de licence contenu dans le présent appareil est conforme aux CNR d'Innovation, Sciences et Développement économique Canada applicables aux appareils radio exempts de licence. L'exploitation est autorisée aux deux conditions suivantes : (1) L'appareil ne doit pas produire de brouillage; (2) L'appareil doit accepter tout brouillage radioélectrique subi, même si le brouillage est susceptible d'en compromettre le fonctionnement.

Contains: FCC ID: DBDWLBC6100
IC: 20318-WLBC6100

GARRETT
METAL DETECTORS

12345678

Made in the USA

MODEL: MZ 6100

INPUT: 100-240V~ 40W

50/60 Hz

FC

CE

C

US

200965

US

200965

US

200965

WARNING: DISCONNECT SUPPLY BEFORE SERVICING.
ATTENTION: DÉCONNECTER L'ALIMENTATION AVANT TOUT ENTRETIEN.
CAUTION: RISK OF ELECTRIC SHOCK. DISCONNECT THE ELECTRIC POWER BEFORE SERVICING.
DANGER: RISQUE DE SECOURS ÉLECTRIQUE. DÉBRANCHER LA SOURCE D'ALIMENTATION AVANT TOUT ENTRETIEN.

This device complies with part 15 of the FCC Rules. Operation is subject to the following two conditions: (1) This device may not cause harmful interference, and (2) This device must accept any interference received, including interference that may cause undesired operation.

This device contains license-exempt transmitter(s) and/or receiver(s) that comply with Innovation, Science and Economic Development Canada's license-exempt RSS(s). Operation is subject to the following two conditions: (1) This device may not cause interference; (2) This device must accept any interference, including interference that may cause undesired operation of the device.

L'appareil contient un ou plusieurs émetteur(s) et/ou récepteur(s) exempts de licence en vertu de la Loi sur l'accès à l'information et de la Loi sur la protection des renseignements personnels. L'exploitation est autorisée aux deux conditions suivantes: (1) L'appareil ne doit pas produire de brouillage; (2) L'appareil doit accepter tout brouillage radioélectrique subi, même si le brouillage est susceptible d'en compromettre le fonctionnement.

Contains: FCC ID: OBCWLB06100
IC: 20319-WLB06100



GARRETT
METAL DETECTORS

12345678

Made in the USA

MODEL: MZ 6100
INPUT: 100-240V~ 40W
50/60 Hz

FC
CE

SP
US
C 200965



WARNING: DISCONNECT SUPPLY BEFORE SERVICING
ATTENTION: DECONNECTER L'ALIMENTATION AVANT TOUT ENTRETIEN
CAUTION: RISK OF ELECTRIC SHOCK - DISCONNECT THE ELECTRIC POWER BEFORE SERVICING
DANGER: RISQUE DE SECOURS ELECTRIQUE - DEBRANCHER LA SOURCE D'ALIMENTATION
ELECTRIQUE AVANT TOUT ENTRETIEN

This device complies with part 15 of the FCC Rules. Operation is subject to the following two conditions: (1) This device may not cause harmful interference, and (2) this device must accept any interference received, including interference that may cause undesired operation.

This device contains licence-exempt transmitter(s) / receiver(s) that comply with Innovation, Science and Economic Development Canada's licence-exempt RSS(s). Operation is subject to the following two conditions: (1) This device may not cause interference, (2) This device must accept any interference, including interference that may cause undesired operation of the device.

L'émetteur/récepteur exempt de licence contenu dans le présent appareil est conforme aux CNR d'Innovation, Sciences et Développement économique Canada applicables aux appareils radio exempts de licence. L'exploitation est autorisée aux deux conditions suivantes: (1) L'appareil ne doit pas produire de brouillage, (2) L'appareil doit accepter tout brouillage radioélectrique subi, même si le brouillage est susceptible d'en compromettre le fonctionnement.

Contains: FCC ID: DBDWLBC6100
IC: 20318-WLBC6100

RADIO

Antenna

ID

FCC ID: DBDL BC6100
IC: 20318-14 BC6100
HVIN 2350600

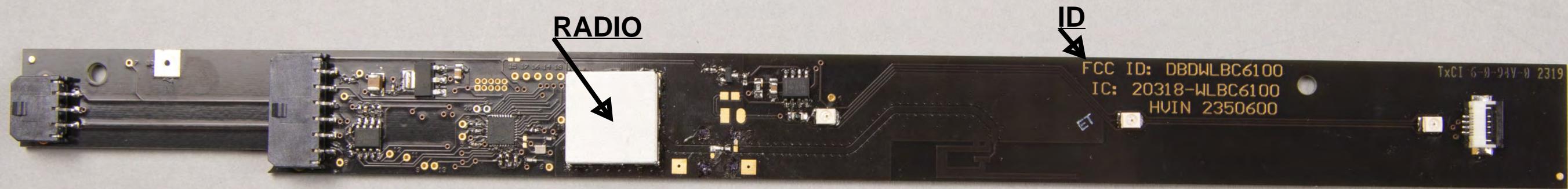
Intel Corporation 2813

RADIO

ID

FCC ID: DBDMLBC6100
IC: 20318-MILBC6100
HWIN 2350600

TXC1 6-8-546-8 2319



RADIO

ID

FCC ID: DBDWLBC6100
IC: 20318-WLBC6100
HVIN 2350600

TxCI 6-0-94V-0 2319

ID & HVIN

FCC ID: DBDWLBC6100
IC: 20318-WLBC6100
HVIN 2350600