

RoHS

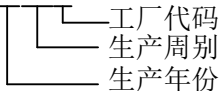
工艺：丝印
字体：Arial
字高：1.1mm
颜色：PMS430C

Wireless Charger

Model: WIABLK100139814
FCC ID: 2APXNLACC133
Input: 5V≐3A, 9V≐2.22A
Output: 10W Max.



This device complies with part 15 of the FCC Rules.
Operation is subject to the following two conditions:
(1)this device may not cause harmful interference,and
(2)this device must accept any interference received,
including interference that may cause undesired operation.
MADE IN VIETNAM 24XXB



注：周别按生产的周别变动而变动(无线充，彩合镭雕一致)

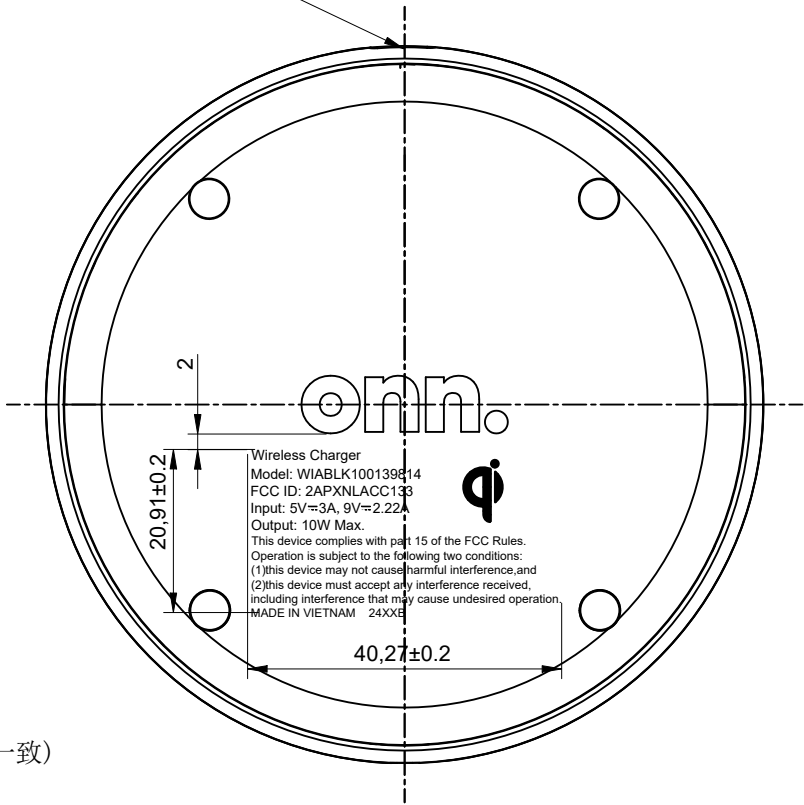
例:2401B
2402B
2403B

⋮

以此类推

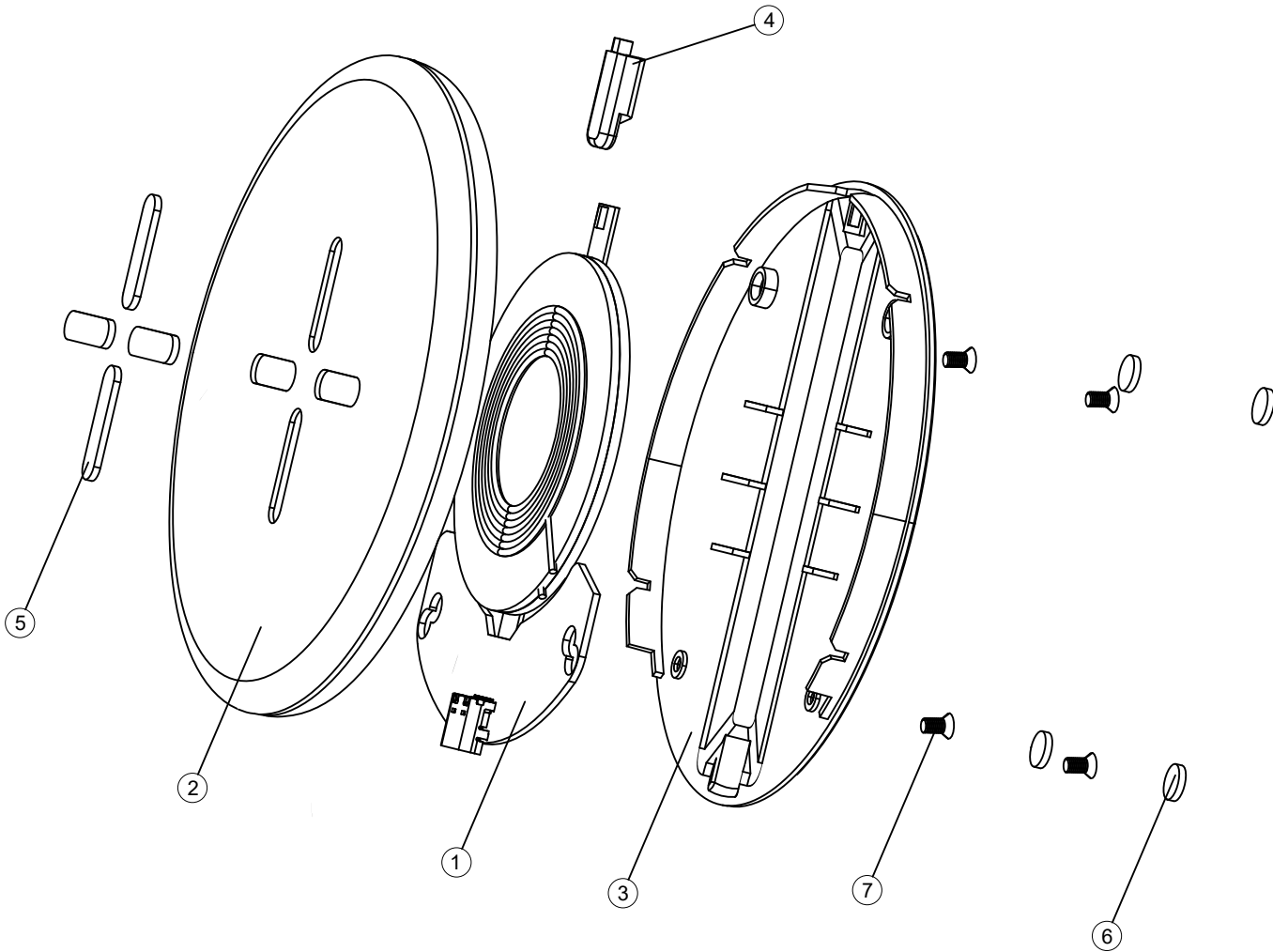
3. 颜色:依签样，字体:Arial ， 字高:1.1mm


此为连接器端



X.± 0.3	X.°±0.3	Customer P/N: WIABLK100139814 Customer REV.: *	LUXSHARE-TECH				
.X± 0.15	.X°±0.2						
.XX± 0.1	.XX°±0.1	TITLE: L3TWC414-CS-R1	SUPPLIER P/N: *				
.XXX± 0.05	.XXX°±0.05		LACC133无线充10W黑色（VN）（无包材）				
UNITS:	mm		DWG NO:				
THESE DRAWINGS AND SPECIFICATIONS ARE THE PROPERTY OF LUXSHARE-TECH AND SHALL NOT BE REPRODUCED, COPIED OR CUED IN ANY MANNER WITHOUT THE PRIOR WRITTEN CONSENT OF LUXSHARE-TECH		APPD:	XIONGWU LI		<div></div> <div>SCALE</div> <div>1:1</div>		
		CHKD:	SHUIPING ZHOU				<div>SHEET</div> <div>2/4</div>
		DRAW:	XIN LIU				<div>REV.</div> <div>A1</div>

RoHS



⑦	螺丝	*螺丝-C1010-P-A-+镀镍-M2*4-HF	4	pcs	X.± 0.3	X.°±0.3	Customer P/N: WIABLK100139814 Customer REV.: *	LUXSHARE-TECH			
⑥	防滑垫	*硅胶件-防滑垫-圆型-黑色-5.0*1.0-R	4	pcs	.X± 0.15	.X°±0.2					
⑤	防滑垫	硅胶件-防滑垫-橡胶-黑-4*16*1-单面背胶-纹面VDI-24-R	4	pcs	.XX± 0.1	.XX°±0.1	TITLE: L3TWC414-CS-R1	SUPPLIER P/N: * LACC133无线充10W黑色（VN）（无包材）			
④	导光柱	塑壳-导光柱-PC-半透明-V0-15*6*4.1-雾面-11P	1	pcs	.XXX± 0.05	.XXX°±0.05					
③	底盖	塑壳-无线充-底盖-PC-黑-V0-φ87.2*6.5-US-R	1	pcs	UNITS:	mm	APPD: XIONGWU LI	DWG NO: -			
②	主壳	塑壳-无线充-主壳-PC-黑-V0-φ92*7.8-R	1	pcs	THESE DRAWINGS AND SPECIFICATIONS ARE THE PROPERTY OF LUXSHARE-TECH AND SHALL NOT BE REPRODUCED, COPIED OR CUED IN ANY MANNER WITHOUT THE PRIOR WRITTEN CONSENT OF LUXSHARE-TECH		CHKD: SHUIPING ZHOU				
①	PCBA	LACC133无线充10W主板（劲芯微）主板/灯板（SMT）	1	pcs			DRAW: XIN LIU		SCALE	SHEET	REV.
ITEM	NAME	DESCRIPTION	Q'TY	UNIT					NONE	3/4	A1

