

# 5G Ruggedized Dongle

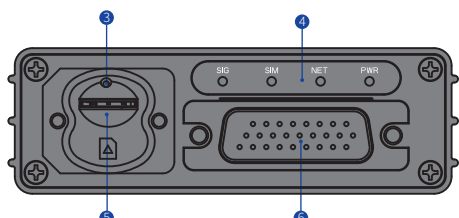
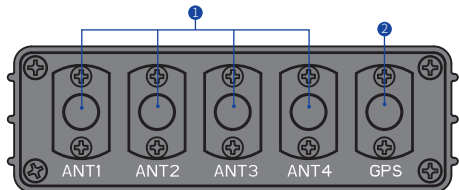
## Quick Start Guide

### Introduction

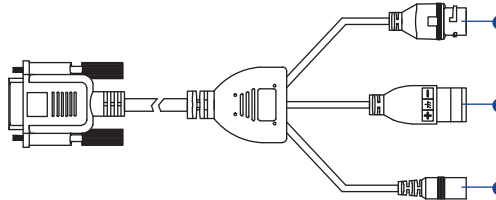
5G Ruggedized Dongle is designed for industrial applications that converts 5G wireless signals into Gigabit Ethernet, providing stable and high-speed 5G access for the devices. With an operating temperature range of -40°C ~ 70°C, IP65 dust and water proof endurance, they offer industrial-grade environmental qualifications while providing higher speed data services for video and other bandwidth-intensive applications.

Designed for indoor harsh industrial environments, 5G Ruggedized Dongle meets high standards in vibration tolerance and is ideal for operations in robot, AVG, AMR, unmanned delivery cars, drones, logistics, automated manufacturing, port and other applications. 5G Ruggedized Dongle can also offer precise information about its real-time location; its built-in GNSS receiver allows GPS, GLONASS, Beidou and Galileo constellations.

### Device Architecture



- 1 LTE antenna interface    2 GPS antenna interface    3 Reset  
4 LED    5 SIM slot    6 Power/LAN/RS485 port



- 1 LAN port    2 RS485 port    3 Power port

### Cable Definition

DI/DO Cable Definition		
	Number	Definition
	1	RS485_B
	2	RS485_GND
	3	RS485_A

### Working Environment

Operating Temperature	-40°C ~ 70°C
Storage Temperature	-40°C ~ 85°C
Humidity	5% ~ 95%
Power Supply	12V DC
Power Consumption	<24W
Water and Dustproof	IP65

### Packing List

Items	Accessories	Qty
1	VGA to Power/LAN/RS485 cable	1
2	Mounting kit U-clip bolt	1
3	U-card bolts	2
4	Power adapter	1
5	4 in 1 LTE antenna(Optional)	1
6	GPS antenna(Optional)	1
7	Cable glands	1

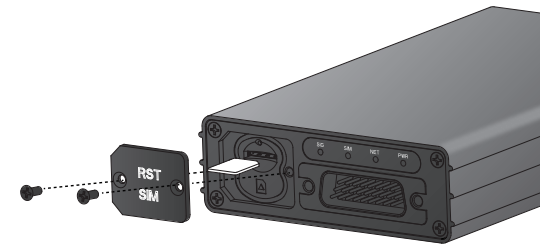
### Hardware Configuration

#### Install SIM Cards

**Step1** Use a cross screwdriver to remove the SIM card cover.

**Step2** Slide the SIM cards into the SIM slots until they click into place. When the 5G Ruggedized Dongle is powered on or rebooted, it automatically connects to the network associated with the Primary SIM card.

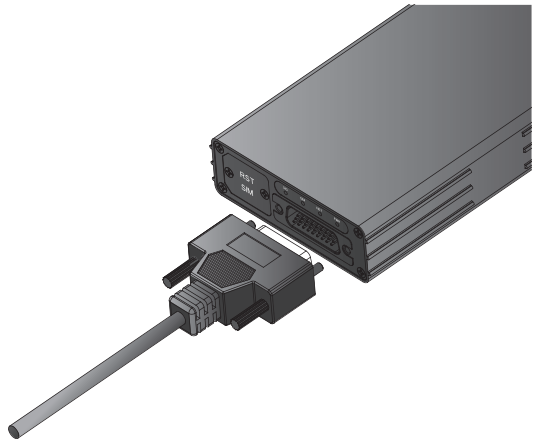
**Step3** Re-attach the cover.



#### Connect and Turn on the Dongle

1. First, make sure the VGA connector is plugged into the socket;
2. Tighten the nut to make sure it's assembled in place;

⚠ When the nuts cannot be screwed in, it may not be assembled in place. Please loosen the nuts, reinsert the head in place, and then tighten the two fixing nuts.



## LED Behavior

When setting up the Dongle Unit, the LED will have the following behavior:

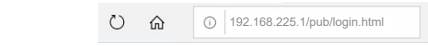
Dongle		
POWER	Steady on	Power on
	Off	No power supply
INTERNET	Steady on	Internet available
	Off	Internet unavailable
	Blinking (500ms interval)	Searching network
SIM	Steady on	SIM ready
	Off	No SIM detected
SIGNAL	Green	Signal strong
	Yellow	Signal good
	Red	Signal weak
	Off	No signal
	Blinking Green and Red (500ms interval)	Firmware upgrade

## Software Configuration

### Login to the Web Management Page

**Step1** Launch the web browser, enter `http://192.168.225.1` in the address bar, and press Enter.

7



**Step2** Enter the username and password, and click **Login**.

**Step3** After the password is verified, you can login to the web management page.



The default username and password are both **admin**. If you want to view or configure the dongle, you should use the super account to login to the web management page. The default super username is **superadmin**, and the password is **admin**.

8

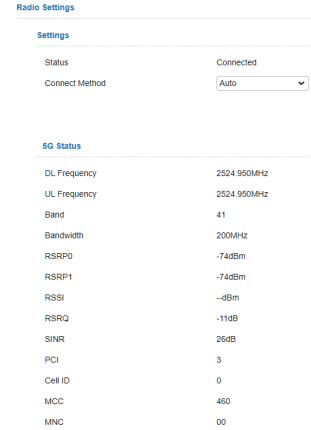
### Configuration of LTE

**Step1** Connect to the CPE correctly.

**Step2** Go to the management website.

**Step3** Choose Settings → Network → LTE Settings.

**Step4** Set the connection mode and scan mode.



The default setting is automatic connection and full band scanning, if you want to connect to the 5G/LTE network according to your needs, you can set the connection mode as manual, and simply scan a specific band.

9

## FAQs

### The POWER indicator does not turn on.

- Make sure that the power cable is connected properly and the dongle is powered on.
- Make sure that the power supply is compatible with the dongle.

### Fails to Login the web management page.

- Make sure that the dongle is powered on.
- Verify that the dongle is correctly connected to the computer through a network cable.
- If the problem persists, please contact the authorized local service suppliers.

### The dongle fails to search for the wireless network.

- Check if the power supply is connected properly.
- Check if the dongle is placed in an open area that is far away from obstructions, such as concrete or wooden walls.
- If the problem persists, please contact the authorized local service suppliers.

10

### The parameters are restored to default values.

- If the dongle is powered off unexpectedly while being configured, the parameters may be restored to the default settings.
- After configure the parameters, download the configuration file and restore the desired settings quickly.

**The dongle does not support SIM card hot-plug, please confirm that the device is powered off when the SIM card is inserted or removed.**

11

## FCC Statement

This equipment has been tested and found to comply with the limits for a Class B digital device, pursuant to part 15 of the FCC Rules. These limits are designed to provide reasonable protection against harmful interference in a residential installation. This equipment generates, uses and can radiate radio frequency energy and, if not installed and used in accordance with the instructions, may cause harmful interference to radio communications. However, there is no guarantee that interference will not occur in a particular installation. If this equipment does cause harmful interference to radio or television reception, which can be determined by turning the equipment off and on, the user is encouraged to try to correct the interference by one or more of the following measures:  
—Reorient or relocate the receiving antenna.  
—Increase the separation between the equipment and receiver.  
—Connect the equipment into an outlet on a circuit different from that to which the receiver is connected.  
—Consult the dealer or an experienced radio/TV technician for help.

### FCC Radiation Exposure Statement

This device complies with FCC radiation exposure limits set forth for an uncontrolled environment and it also complies with Part 15 of the FCC RF Rules. This equipment must be installed and operated in accordance with provided instructions and the antenna(s) used for this transmitter must be installed to provide a separation distance of at least 20 cm from all persons

12

and must not be co-located or operating in conjunction with any other antenna or transmitter. End-users and installers must be provided with antenna installation instructions and consider removing the no-collocation statement.

This device complies with Part 15 of the FCC Rules. Operation is subject to the following two conditions:  
(1) this device may not cause harmful interference, and  
(2) this device must accept any interference received, including interference that may cause undesired operation.  
Caution!

Any changes or modifications not expressly approved by the party responsible for compliance could void the user's authority to operate the equipment.

13